



United States
Department of Agriculture

Foreign
Agricultural
Service

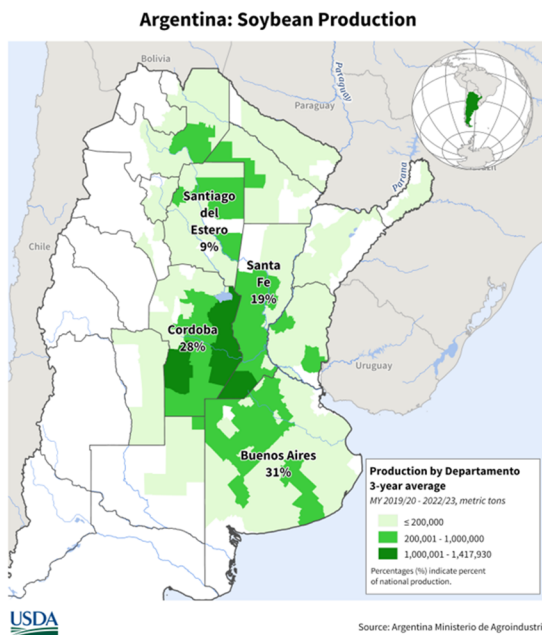
Circular Series
WAP 03-26
March 2026

World Agricultural Production

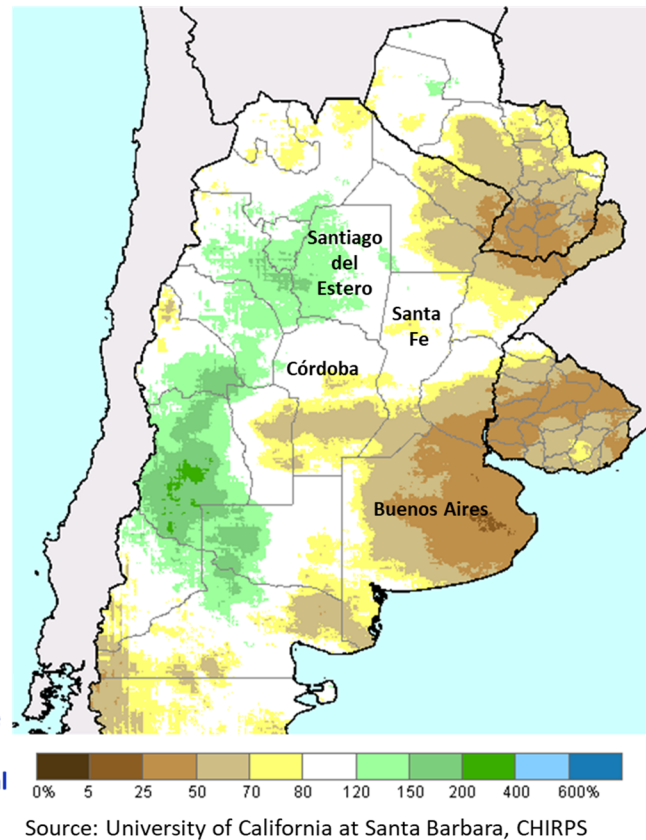
Argentina Soybeans: Area Up but Yield Down Due to Insufficient Rainfall

USDA forecasts Argentina soybean production for marketing year 2025/26 at 48.0 million metric tons, down 1 percent from last month and 6 percent from last year. Yield is forecast at 2.86 tons per hectare, down 3 percent from last month and 2 percent from last year. Harvested area is forecast at 16.8 million hectares, up 2 percent from last month, but down 4 percent from last year.

Argentina: Percent of Normal Precipitation 2 month (1 January – 28 February 2026)



According to Bolsa Cereales Buenos Aires, as of late February, the majority of first-crop soybeans are in the field-defining stage. Regarding second-crop soybeans, 12% of the planted area has already entered the critical period and requires continued rainfall.



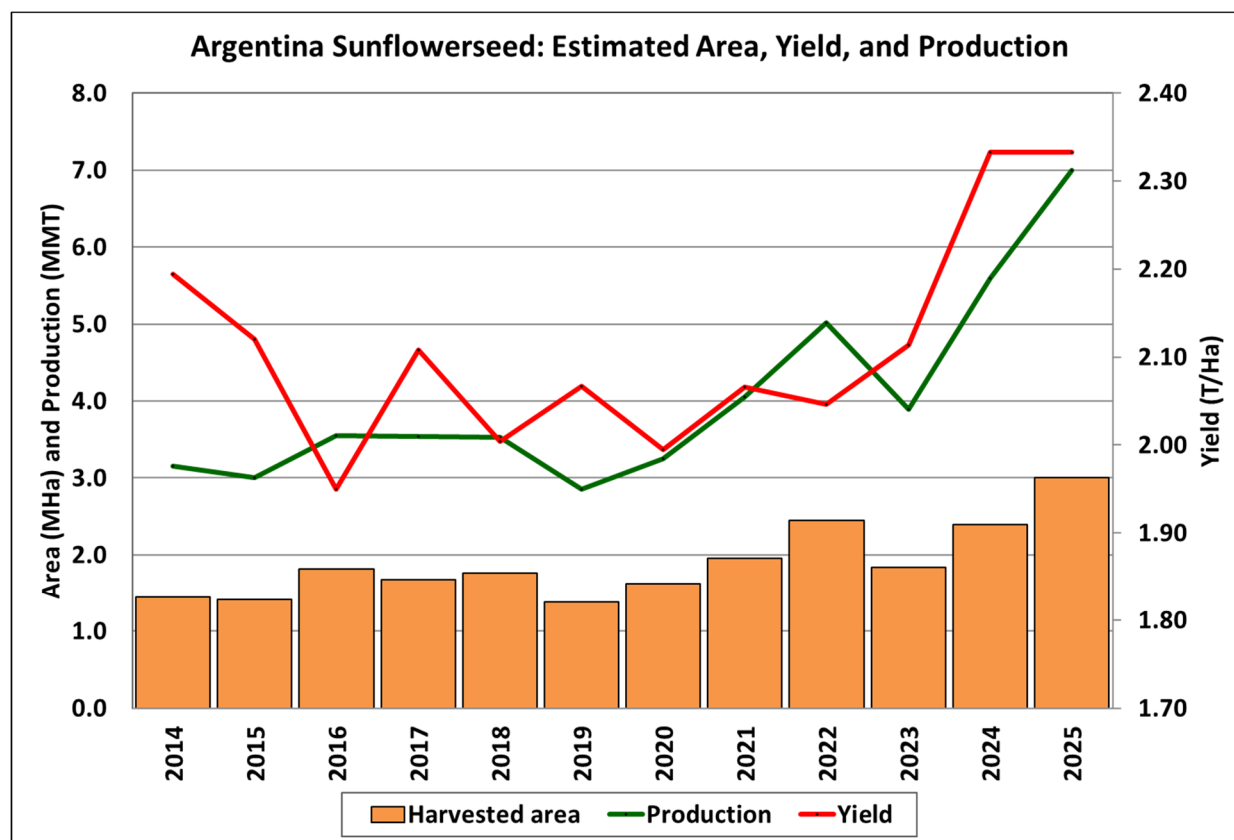
Soybeans in Argentina are grown as first-crop (75 percent) or second-crop (25 percent) soybeans. Planting for both crops is complete. Area is up this month guided by official data from the Argentina Ministry of Agriculture. Yield, on the other hand, is revised down month-to-month due to inadequate soil moisture reserves. Rainfall during the months of January and February was very heterogenous and limited in terms of total accumulation. As a result, the overall precipitation

Approved by the World Agricultural Outlook Board

remained near to below average across the key soybean growing areas. Ministry reports indicate good crop status for the first crop, which is mostly in the flowering and grain-filling stages. The second crop, however, is showing varying degrees of stress and damage due to the existing water deficit. *(For more information, please contact Iliana.Mladenova@usda.gov.)*

Argentina Sunflowerseed: Production Revised Up Based on Official Data

USDA estimates Argentina sunflowerseed production for marketing year 2025/26 at 7.0 million metric tons (mmt), up 27 percent from last month and 25 percent from last year. Yield is estimated at 2.33 tons per hectare (t/ha), up 12 percent from last month and unchanged from last year. Harvested area is estimated at 3.0 million hectares (mha), up 13 percent from last month and 25 percent from last year.



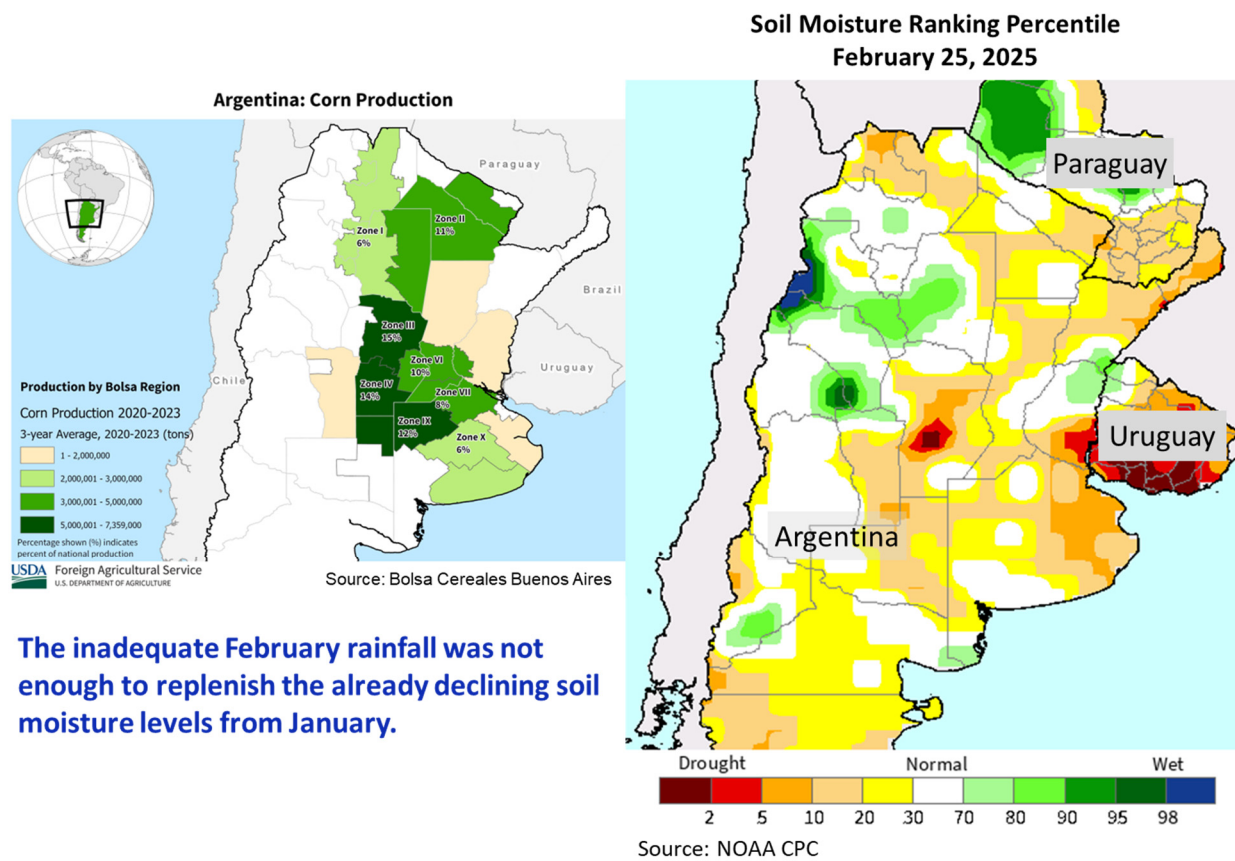
Source: USDA PSD Online

Sunflowers in Argentina are concentrated in three provinces: Buenos Aires (53 percent of production), Chaco (17 percent), and Santa Fe (13 percent). This year, sunflowerseed area has increased at the expense of cotton area, especially in the northern regions. Official data from the Argentina Ministry of Agriculture indicate that 3.1 mha have been planted this year. In addition, harvest is progressing and according to Bolsa Cereales Buenos Aires, yield is at 2.28 t/ha as of late February, and it has been stable at this level since the start of the harvest campaign. Generally, the Bolsa Cereales Buenos Aires yield is within 5 percent relative to the Ministry of Agriculture’s final yield. Harvest will continue until April. *(For more information, please contact Iliana.Mladenova@usda.gov.)*

Argentina Corn: Drop in Yield Due to Insufficient January and February Rainfall

USDA estimates Argentina corn production for marketing year 2025/26 at 52.0 million metric tons, down 2 percent from last month, but up 4 percent from last year. Corn yield is estimated at 6.93 tons per hectare, down 2 percent from last month and 4 percent from last year. Harvested area is estimated at 7.5 million hectares, unchanged from last month and up 9 percent from last year.

Argentina: Soil Moisture Below Normal



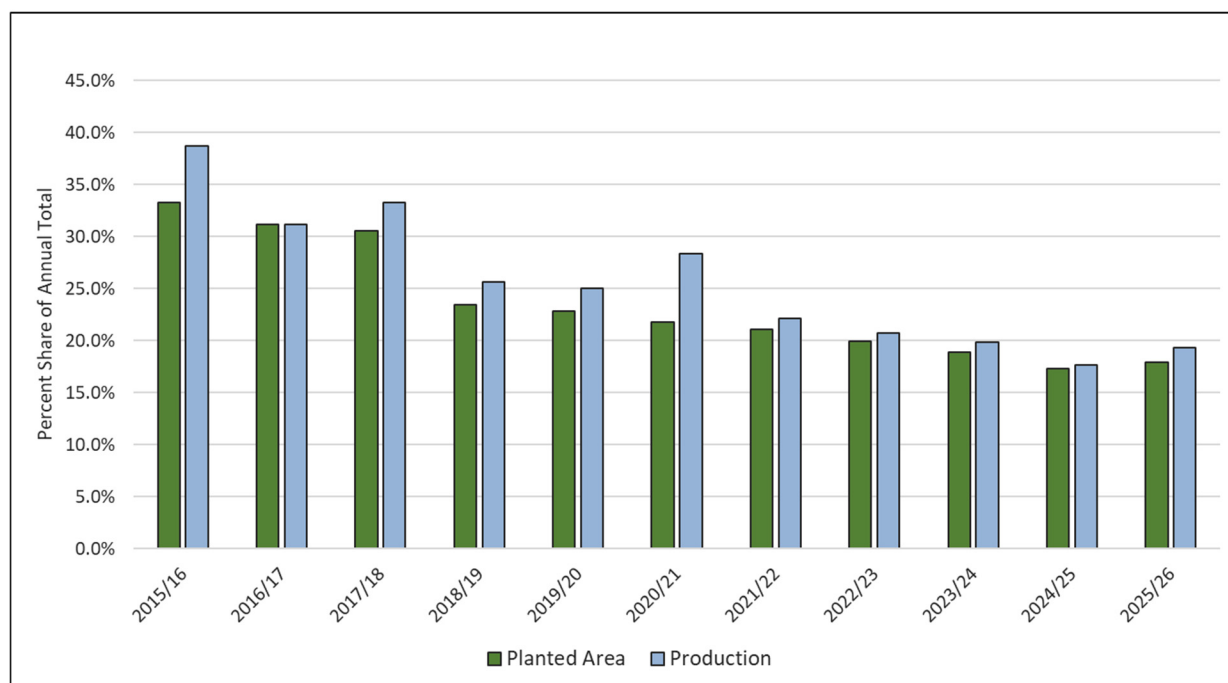
The inadequate February rainfall was not enough to replenish the already declining soil moisture levels from January.

Argentina farmers plant both early-planted corn (corn planted prior to December 1st) and late-planted corn (corn planted after December 1st). Over the last couple of weeks, rain has been recorded mostly in the central and northern agriculture areas of Argentina. Rain showers, however, have been unevenly distributed with limited intensity. Thus, the inadequate February rainfall was not enough to replenish the already declining soil moisture levels from January. Harvest of early-planted corn is underway. *(For more information, please contact Iliana.Mladenova@usda.gov.)*

Brazil Corn: Area and Production Increase on Larger First Crop

USDA estimates Brazil corn production for marketing year 2025/26 at 132.0 million metric tons (mmt), up 1 percent from last month, but down 3 percent from last year's record crop, and yet 11 percent above the 5-year average. Harvested area is estimated at a record 22.8 million hectares, up 1 percent from last month, 2 percent from last year, and 6 percent above the 5-year average. Yield is estimated at 5.79 tons per hectare, down marginally from last month, 5 percent from last year, but 6 percent above the 5-year average. The corn yield estimate assumes a return to normal weather.

Brazil 1st Crop Corn: Percent Share of Total Annual Production



Source: Companhia Nacional de Abastecimento (CONAB)

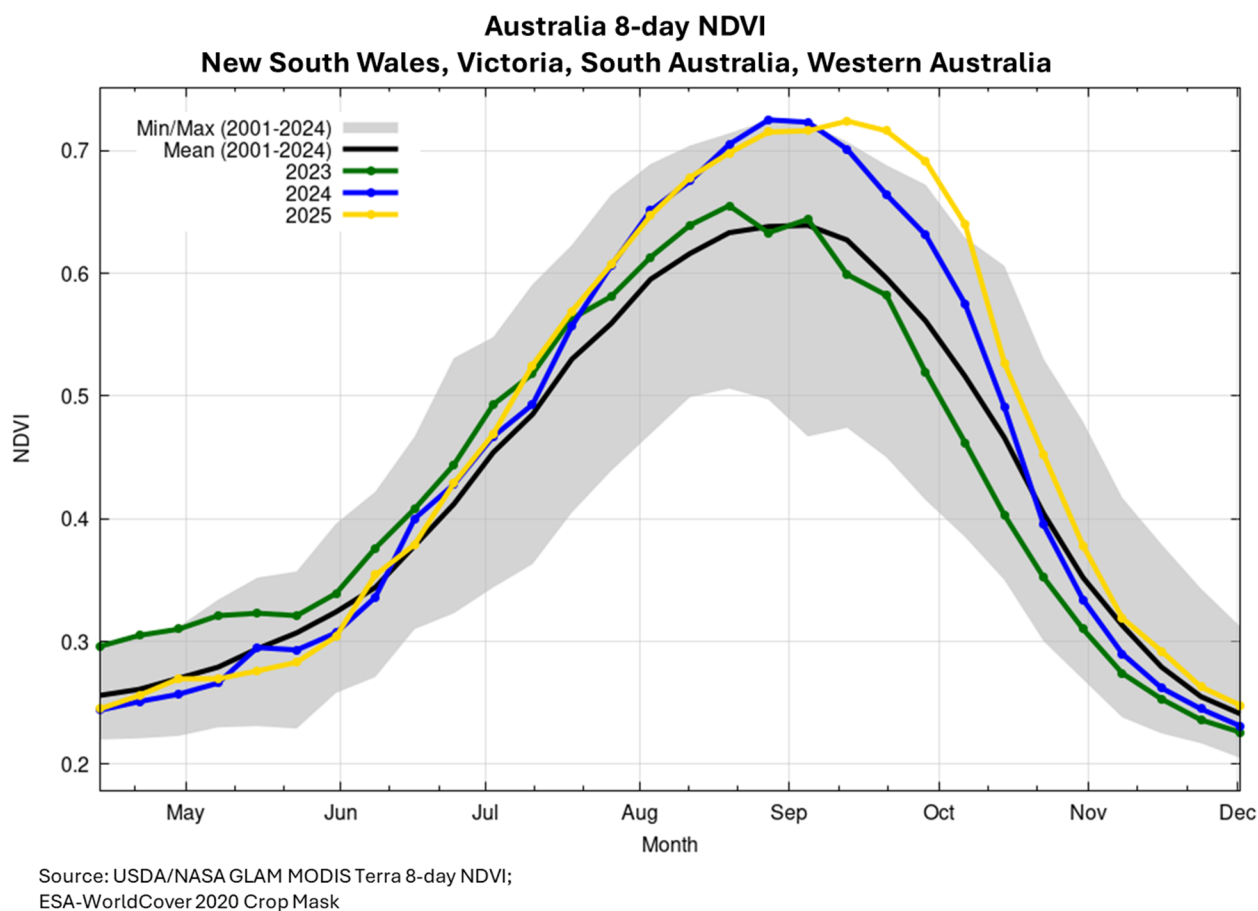
Brazil produces corn primarily as a second crop, following the soybean harvest in January and February. This second, or *safrinha* crop has grown in recent years to represent 75 percent or more of annual production. Conversely, first-crop corn, now a competing crop with soybeans (simultaneously planted in September through December), has seen its share of total national production diminish, with *safrinha* corn area expanding and first corn area falling. Planted area for first corn is now less than half of what it was 20 years ago.

This season, however, has seen a small rebound in first corn planting, with area rising year-to-year for the first time in four seasons. With planted area for *safrinha* corn also increasing, USDA has increased its record harvested area estimate further. With early returns indicating positive yields for first crop corn, USDA assumes normal weather and average yields for *safrinha* corn will elevate total annual corn production to a new estimate of 132.0 mmt. (For more information, please contact Aaron.Mulhollen@usda.gov.)

Australia Barley: Production Reaches a New Record

USDA estimates Australia barley production for marketing year (MY) 2025/26 at a record 16.3 million metric tons, up 5 percent from last month, 23 percent from last year and 21 percent above the 5-year average. Harvested area is estimated at 4.8 million hectares, down 1 percent from last month, but up 3 percent from last year and 1 percent above the 5-year average. Yield is estimated at 3.42 metric tons per hectare, up 6 percent from last month, 19 percent from last year and 19 percent above the 5-year average.

The year-over-year increase in production is supported by a higher official forecast released on March 2, 2026 by the Australian Bureau of Agricultural and Resource Economics and Sciences (ABARES), as well as exceptional growing conditions through the critical crop development stages this year. Barley is grown in the winter in Australia with planting beginning in April. Harvest typically commences in October and continues through January, thus, the MY 2025/26 barley harvest is complete.

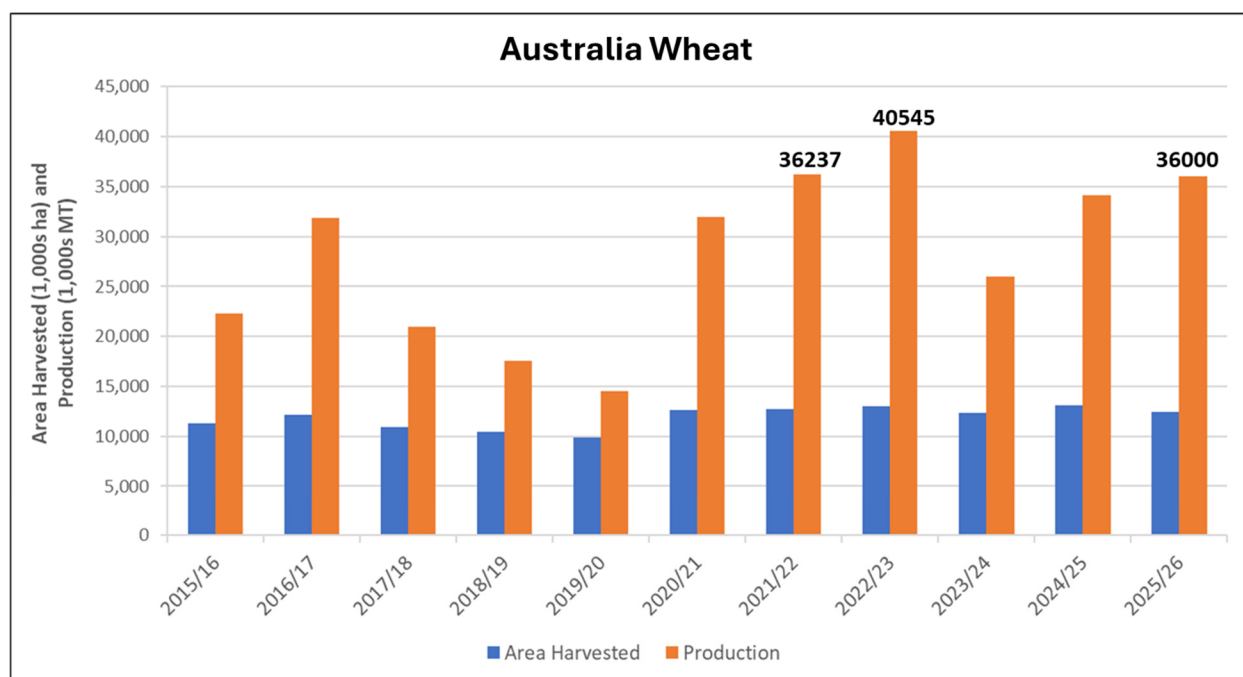


From the beginning of the barley season, April through mid-June, the growing conditions were below normal, indicating dryness during the start of the season. Fortunately, timely precipitation came throughout the remainder of the season, thus boosting the barley crop when it needed it most.

Analysis of the satellite-derived Normalized Difference Vegetation Index (NDVI) depicts above-average conditions and crop vigor in the barley producing areas across Australia. This provides evidence to support the increase in production for MY 2025/26 to a new record. (For more information, please contact Shannon.Moyo@usda.gov.)

Australia Wheat: Production is Third Highest on Record

USDA forecasts Australia wheat production for marketing year 2025/26 at 36.0 million metric tons, down 3 percent from last month, but up 6 percent from last year and 7 percent above the 5-year average. Harvested area is estimated at 12.4 million hectares, down 2 percent from last month, 5 percent from last year and 3 percent below the 5-year average. Yield is forecast at 2.90 metric tons per hectare, down less than 1 percent from last month, but up 11 percent from last year and 10 percent above the 5-year average.



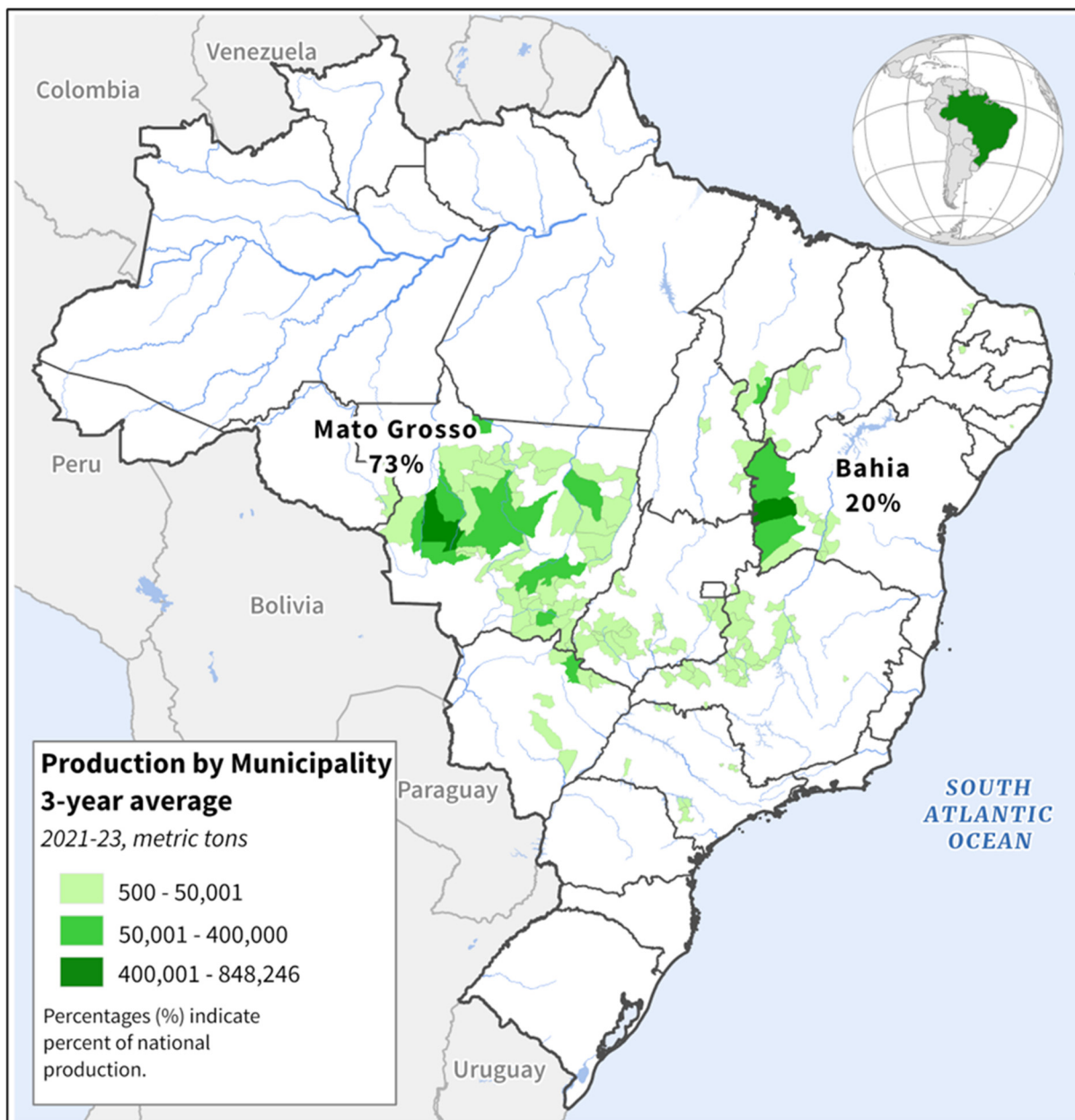
Source: USDA PSD Online

The revised estimate is based on the latest official crop report that was released on March 2, 2026 by the Australian Bureau of Agricultural and Resource Economics and Sciences (ABARES). The crop report described mixed conditions throughout the winter cropping regions, and specifically a new record production in Western Australia due to favorable conditions. A Commodity Intelligence Report (CIR) published on September 24, 2025 detailed excellent conditions during crop travel in Western Australia, available at <https://www.fas.usda.gov/sites/default/files/2026-02/09-2025-Australia.pdf>. (For more information, please contact Shannon.Moyo@usda.gov.)

Brazil Cotton: Record Production on Higher Area and Record Yield

USDA estimates Brazil soybean production for marketing year (MY) 2025/26 at a record 19.5 million 480-pound bales, up 4 percent from last month, 15 percent from last year and 44 percent above the 5-year average. Harvested area is estimated at 2.2 million hectares, up 3 percent from last month, 12 percent from last year and 32 percent above the 5-year average. Yield is estimated at a record 1,957 kilograms per hectare, up 1 percent from last month, 3 percent from last year, and 10 percent above the 5-year average.

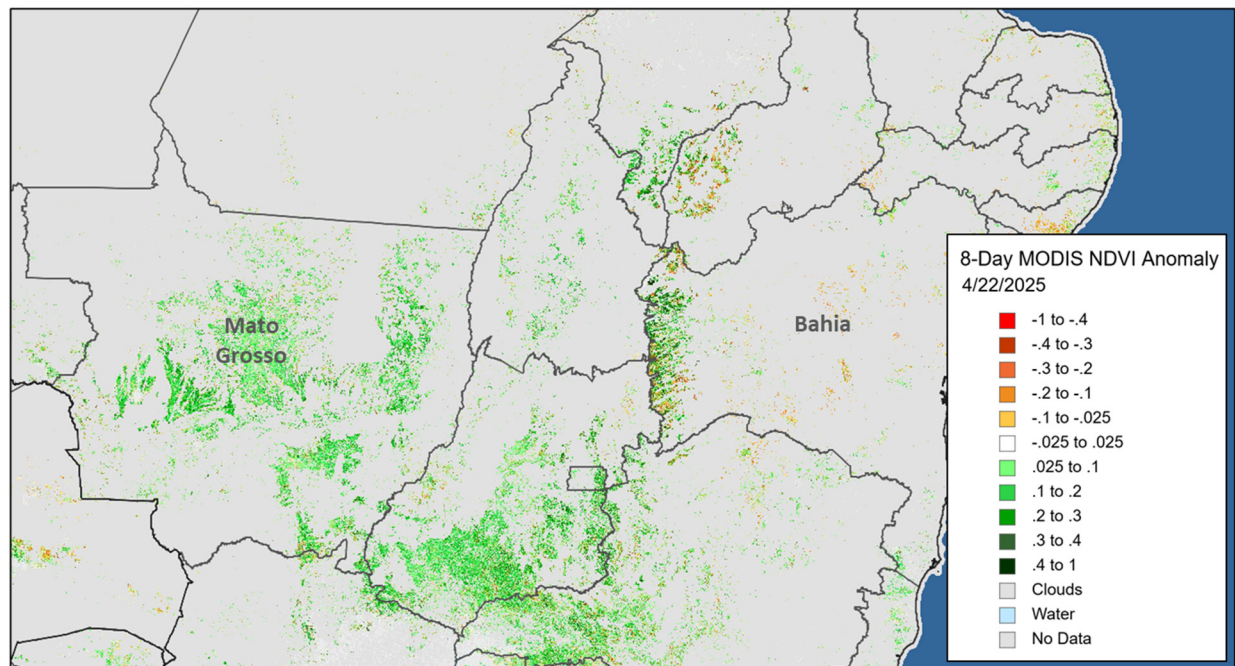
Brazil: Cotton Production



Source: IBGE - Produção Agrícola Municipal

Cotton production continues to expand in Brazil, which has become the world’s largest cotton exporter. The Mato Grosso Institute for Agricultural Economics (IMEA) and the *Associação Matogrossense dos Produtores de Algodão (AMPA)* estimate cotton area in the state at over 1.5 mha, a 6 percent increase over the previous season. In Bahia, sources indicate that area is up 19 percent, year-over-year.

Brazil Croplands: NDVI Anomaly, April 15-22, 2025



Sources: USDA NASA GLAM 8-Day MODIS Imagery; ESRI Sentinel-2 Non-Cropland Mask 2020 (10m)

The MY 2025/26 cotton season follows the MY 2024/25 soybean season in Brazil. Despite planting delays in Mato Grosso in early 2025, seasonal rainfall resulted in healthy crop vigor, as indicated by satellite-derived Normalized Difference Vegetation Index (NDVI) analysis. These ideal conditions for the 2025 cotton cropping season boosted yields to an all-time high. Record yields, coupled with the additional area, further boosted production to a new record. *(For more information, please contact Aaron.Mulhollen@usda.gov.)*



World Agricultural Production
U.S. Department of Agriculture

Foreign Agricultural Service / Global Market Analysis
International Production Assessment Division (IPAD)
GMA/IPAD Room 5071, South Building
1400 Independence Ave SW
Washington, DC 20250-1051

This report uses information from the Foreign Agricultural Service's (FAS) global network of agricultural attachés and counselors, official statistics of foreign governments and other foreign source materials, and the analysis of economic data and satellite imagery. Estimates of foreign area, yield, and production are from the International Production Assessment Division (IPAD), FAS, and are reviewed by USDA's Inter-Agency Commodity Estimates Committee. Estimates of U.S. area, yield, and production are from USDA's National Agricultural Statistics Service. Numbers within the report may not add to totals because of rounding. This report reflects official USDA estimates released in the World Agricultural Supply and Demand Estimates (WASDE-584), March 10, 2026.

The FAS International Production Assessment Division prepared this report. The next issue of World Agricultural Production will be released after 12:00 p.m. Eastern Time, April 9, 2026.

Conversion Table

Metric tons to bushels

Wheat, soybeans	=	MT * 36.7437
Corn, sorghum, rye	=	MT * 39.36825
Barley	=	MT * 45.929625
Oats	=	MT * 68.894438

Metric tons to 480-lb bales

Cotton	=	MT * 4.592917
--------	---	---------------

Metric tons to hundredweight

Rice	=	MT * 22.04622
------	---	---------------

Area & weight

1 hectare	=	2.471044 acres
1 kilogram	=	2.204622 pounds



For further information, contact:
U.S. Department of Agriculture
Foreign Agricultural Service
Global Market Analysis

International Production Assessment Division
 GMA/IPAD Room 5071, South Building
 1400 Independence Ave SW
 Washington, DC 20250-1051

GENERAL INFORMATION

Senior Director	Ronald Frantz	ronald.frantz@usda.gov
Director	Vacant	
USDA Remote Sensing Advisor	Vacant	
Sr. Analyst/Technical Lead	Curt Reynolds, Ph.D.	curt.reynolds@usda.gov
Sr. Analyst/ Satellite Imagery	Dath Mita, Ph.D.	dath.mita@usda.gov
Archives Manager/Technical Lead		
Sr. Analyst/Technical Lead	Vacant	
GIS Mapping/Imagery Analyst	Lisa Colson	lisa.colson@usda.gov
WAP Coordinators	Shannon Moyo	shannon.moyo@usda.gov
	Vacant	

ANALYSIS REGIONS

ANALYST

CONTACT INFORMATION

Brazil, Pakistan, and South Asia	Aaron Mulhollen	aaron.mulhollen@usda.gov
South America (except Brazil), and Central Asia	Katie McGaughey	katie.mcgaughey@usda.gov
Europe, North Africa, and Middle East	Bryan Purcell	bryan.purcell@usda.gov
India, China and East Asia	Dath Mita, Ph.D.	dath.mita@usda.gov
South Africa and Sub-Saharan Africa	Curt Reynolds, Ph.D.	curt.reynolds@usda.gov
Southeast Asia	Justin Jenkins	justin.jenkins@usda.gov
Mexico and Central America	Lisa Colson	lisa.colson@usda.gov
Australia and Oceania	Shannon Moyo	shannon.moyo@usda.gov
Canada and Caribbean	Sarah Parker	sarah.parker@usda.gov
Russia, Ukraine, Kazakhstan, Moldova, and Belarus	Iliana Mladenova, Ph.D.	iliana.mladenova@usda.gov



The Foreign Agricultural Service (FAS) updates its production, supply and distribution (PSD) database for cotton, oilseeds, and grains at 12:00 p.m. on the day the *World Agricultural Supply and Demand Estimates* (WASDE) report is released. This circular is released by 12:15 p.m.

FAS Reports and Databases:

World Agricultural Production

Current: <https://www.fas.usda.gov/data/world-agricultural-production>

Archive: <https://esmis.nal.usda.gov/publication/world-agricultural-production>

USDA's Foreign Agricultural Service (FAS) publishes a monthly report on crop acreage, yield and production in major countries worldwide. Sources include reporting from FAS's worldwide offices, official statistics of foreign governments, and analysis of economic data and satellite imagery. The reports reflect official USDA estimates released in the monthly *World Agricultural Supply and Demand Estimates* (WASDE).

World Markets and Trade

Current: https://www.fas.usda.gov/data/search?reports%5B0%5D=report_type%3A10259

Archive: <https://esmis.nal.usda.gov/?f%5B0%5D=agency%3A1>

USDA's Foreign Agricultural Service (FAS) publishes monthly and quarterly reports which include data on U.S. and global trade, production, consumption and stocks, as well as analysis of developments affecting world trade in oilseeds, grains, cotton, livestock and poultry. The reports reflect official USDA estimates released in the monthly *World Agricultural Supply and Demand Estimates* (WASDE).

Global Agricultural Information Network (GAIN)

<https://gain.fas.usda.gov/>

USDA's Foreign Agricultural Service (FAS) provides timely reports on foreign markets through the Global Agriculture Information Network (GAIN) database. An average of 2,000 reports are added each year, with reports going back to 1995. GAIN reports are compiled by FAS' global market intelligence network, which includes FAS foreign service officers and locally engaged staff in over 90 overseas offices world-wide. They provide on-the-ground intelligence, insight, and analysis on nearly 200 countries, delivering information on foreign agricultural markets, crop conditions, and agro-political dynamics of interest to U.S. agriculture. GAIN reports contain assessments of commodity and trade issues made by USDA staff and are not necessarily statements of official U.S. government policy.

Production, Supply and Distribution (PS&D) Online

<https://apps.fas.usda.gov/psdonline/app/index.html#/app/home>

PSD Online is the public repository for USDA's Official Production, Supply and Distribution forecast data and reports for key agricultural commodities. PSD Online data are reviewed and updated monthly by an interagency committee chaired by USDA's World Agricultural Outlook Board (WAOB). The committee consist of representatives from Foreign Agricultural Service (FAS), the Economic Research Service (ERS), the Farm Service Agency (FSA), and the Agricultural Marketing Service (AMS).

EU Countries and Russia Wheat: Area and Production Estimates

<https://apps.fas.usda.gov/psdonline/app/index.html#/app/downloads> (click on PSD Datasets)

USDA's Foreign Agricultural Service (FAS) provides country-level area and production estimates for the nations of the European Union. For Russia, country-level area and production estimates are provided for Winter and Spring wheat. These datasets are reviewed and updated monthly by an interagency committee chaired by USDA's World Agricultural Outlook Board (WAOB) and can be downloaded through PSD datasets on PSD Online.

Approved by the World Agricultural Outlook Board



FAS Reports and Databases:

International Production Assessment (IPAD)

Due to U.S. Department of Agriculture (USDA) guidance, the International Production Assessment Division (IPAD) website is no longer available to the public. Crop production maps, crop calendars, and historical commodity-specific area, yield, and production data is available on the FAS website.

<https://www.fas.usda.gov/data>

USDA and NASA Global Agricultural Monitoring (GLAM)

<https://glam1.gsfc.nasa.gov/>

The USDA and NASA Global Agricultural Monitoring (GLAM) system provides near real-time and science quality Moderate Resolution Imaging Spectroradiometer (MODIS) Normalized Difference Vegetation Index (NDVI) from the satellites Terra and Aqua. The public can view and retrieve MODIS 8-day composited, global NDVI satellite imagery and time series data. GLAM was developed by NASA's Global Inventory Modeling and Mapping Studies (GIMMS) group for USDA's Foreign Agricultural Service.

Global Agricultural and Disaster Assessment System (GADAS)

<https://geo.fas.usda.gov/GADAS/index.html>

USDA's Foreign Agricultural Service (FAS) provides the Global Agricultural and Disaster Assessment System (GADAS), a web-based Geographic Information System (GIS) tool which integrates a vast array of highly detailed earth observation data streams, particularly targeted towards agricultural and disaster assessment analysis. GADAS is an interactive website which provides analysts with a wide variety of routine geospatial products (maps, charts, tables) they require for comprehensive situational investigations and recurring assessments.

Export Sales Reporting

<https://apps.fas.usda.gov/esrquery/>

USDA's Export Sales Reporting Program monitors U.S. agricultural export sales on a daily and weekly basis. Export sales reporting provides a constant stream of up-to-date market information for 40 U.S. agricultural commodities sold abroad. The weekly U.S. Export Sales report is the most currently available source of U.S. exports sales data. The data is used to analyze overall levels of export demand, determine where markets exit, and assess the relative position of U.S. commodities in foreign markets.

Global Agricultural Trade System (GATS)

<https://apps.fas.usda.gov/gats/default.aspx>

The Global Agricultural Trade System (GATS) is a searchable database containing monthly U.S. Census Bureau trade data organized by agricultural commodity and agricultural related product groups. Trade data is searchable by partner countries and partner groups. Historical U.S. agricultural trade data is available back to 1967. In addition, U.N. trade statistics (UN Comtrade) may be queried through GATS. UN trade data is available for nearly 200 countries or areas, dating from the inception of the Harmonized System (HS) of trade codes in 1989 to present. The database is continuously updated. U.S. trade data is updated monthly according to the U.S. Census Bureau's reporting system. UN Comtrade data are updated in GATS after nationally submitted data to the UN are standardized by the UN Statistical Division and added to the UN Comtrade database.

Other USDA Reports:

World Agricultural Supply and Demand Estimates (WASDE):

<http://www.usda.gov/oce/commodity/wasde/>

Economic Research Service:

<http://www.ers.usda.gov/topics/crops>

National Agricultural Statistics Service:

<http://www.nass.usda.gov/Publications/>

Table 01 World Crop Production Summary

Million Metric Tons

Commodity	World	Total Foreign	North America			Former Soviet		European	Asia (WAP)					South America		Selected Other			All Others
			United States	Canada	Mexico	Russia	Ukraine		China	India	Indonesia	Pakistan	Thailand	Argentina	Brazil	Australia	South Africa	Turkey	
			-	-	-	-	-		-	-	-	-	-	-	-	-	-	-	
---Million metric tons---																			
Wheat																			
2023/24	791.5	742.4	49.1	33.4	3.5	91.5	23.0	nr	136.6	110.6	0.0	28.2	0.0	15.9	8.1	26.0	2.1	21.0	242.8
2024/25 prel.	800.4	746.6	53.9	35.9	2.6	81.6	23.4	nr	140.1	113.3	0.0	31.4	0.0	18.5	7.9	34.1	1.9	19.0	236.7
2025/26 proj.																			
Feb	841.8	787.8	54.0	40.0	1.8	89.5	23.0	nr	140.1	117.9	0.0	29.0	0.0	27.8	8.0	37.0	1.9	17.5	254.4
Mar	842.1	788.1	54.0	40.0	1.8	89.5	24.0	nr	140.1	117.9	0.0	29.0	0.0	27.8	8.0	36.0	1.9	17.5	254.7
Coarse Grains																			
2023/24	1,507.5	1,104.6	402.9	27.5	28.9	42.5	39.8	nr	297.4	57.2	12.7	10.2	5.4	60.0	124.8	14.5	13.9	17.0	352.7
2024/25 prel.	1,511.3	1,119.8	391.5	27.5	28.3	34.8	33.5	nr	303.5	61.6	13.1	8.6	5.4	58.5	143.6	17.7	17.6	14.5	351.9
2025/26 proj.																			
Feb	1,590.4	1,142.6	447.8	29.5	30.9	39.1	35.6	nr	310.2	62.1	13.0	10.1	5.6	62.3	137.6	19.9	17.0	14.2	355.6
Mar	1,593.1	1,145.3	447.8	29.4	30.9	39.1	37.0	nr	310.2	62.1	13.0	10.1	5.6	61.3	139.1	21.0	17.0	14.2	355.4
Rice, Milled																			
2023/24	523.9	517.0	6.9	0.0	0.2	0.7	0.0	nr	144.6	137.8	33.0	9.9	20.0	0.8	7.2	0.4	0.0	0.5	161.8
2024/25 prel.	541.6	534.6	7.1	0.0	0.2	0.8	0.0	nr	145.3	150.0	34.1	9.7	20.8	1.1	8.7	0.4	0.0	0.6	163.0
2025/26 proj.																			
Feb	541.3	534.7	6.6	0.0	0.2	0.8	0.0	nr	146.3	152.0	33.6	9.4	20.4	0.9	7.6	0.2	0.0	0.6	162.8
Mar	541.3	534.7	6.6	0.0	0.2	0.8	0.0	nr	146.3	152.0	33.6	9.4	20.4	0.9	7.6	0.2	0.0	0.6	162.8
Total Grains																			
2023/24	2,822.9	2,364.0	458.9	60.9	32.6	134.7	62.8	nr	578.6	305.5	45.7	48.3	25.4	76.7	140.1	40.9	16.0	38.6	757.3
2024/25 prel.	2,853.4	2,401.0	452.4	63.5	31.1	117.2	56.9	nr	588.8	324.8	47.2	49.7	26.2	78.0	160.2	52.2	19.6	34.0	751.6
2025/26 proj.																			
Feb	2,973.5	2,465.1	508.4	69.4	32.8	129.3	58.6	nr	596.6	332.1	46.6	48.5	26.0	91.0	153.2	57.1	18.9	32.2	772.8
Mar	2,976.5	2,468.1	508.4	69.4	32.8	129.3	61.0	nr	596.6	332.1	46.6	48.5	26.0	90.0	154.7	57.1	18.9	32.2	772.9
Oilseeds																			
2023/24	657.4	535.3	122.2	26.6	0.6	28.1	25.5	nr	66.9	41.4	13.9	3.8	1.0	54.2	160.3	7.4	2.8	3.1	99.6
2024/25 prel.	685.0	556.4	128.6	26.9	0.8	28.6	24.0	nr	67.8	42.2	14.7	2.9	1.0	59.1	178.6	7.9	3.9	3.1	94.9
2025/26 proj.																			
Feb	695.8	569.5	126.2	28.9	0.6	31.6	20.1	nr	69.6	41.1	15.1	2.9	1.0	56.0	187.6	8.4	3.8	2.8	99.9
Mar	697.5	571.3	126.2	28.9	0.6	31.6	20.0	nr	69.8	41.1	15.1	2.9	1.0	56.9	187.9	8.9	3.8	2.8	100.0
Cotton																			
2023/24	112.2	100.2	12.1	0.0	0.9	0.0	0.0	1.0	27.4	25.4	0.0	7.0	0.0	1.7	14.6	5.0	0.1	3.2	14.0
2024/25 prel.	118.5	104.1	14.4	0.0	1.0	0.0	0.0	1.2	32.0	23.2	0.0	5.0	0.0	1.4	17.0	5.6	0.1	4.0	13.7
2025/26 proj.																			
Feb	119.9	105.9	13.9	0.0	0.6	0.0	0.0	1.2	35.0	23.5	0.0	5.0	0.0	1.4	18.8	4.5	0.1	3.0	13.0
Mar	121.0	107.1	13.9	0.0	0.6	0.0	0.0	1.2	35.5	23.5	0.0	5.0	0.0	1.3	19.5	4.5	0.1	3.0	13.0

1/ Includes wheat, coarse grains, and rice (milled) shown above.

Table 02 Wheat Area, Yield, and Production

Country / Region	Area (Million hectares)				Yield (Metric tons per hectare)				Production (Million metric tons)				Change in Production			
	2023/24	Prel.	2025/26 Proj.		2023/24	Prel.	2025/26 Proj.		2023/24	Prel.	2025/26 Proj.		From last month		From last year	
		2024/25	Feb	Mar		2024/25	Feb	Mar		2024/25	Feb	Mar	MMT	Percent	MMT	Percent
World	222.25	222.20	219.88	219.58	3.56	3.60	3.83	3.84	791.53	800.43	841.80	842.12	0.32	0.04	41.69	5.21
United States	15.01	15.63	15.07	15.07	3.27	3.44	3.58	3.58	49.10	53.85	54.01	54.01	0.00	0.00	0.16	0.30
Total Foreign	207.25	206.56	204.81	204.51	3.58	3.61	3.85	3.85	742.44	746.58	787.79	788.11	0.32	0.04	41.53	5.56
European Union	24.32	22.74	23.97	23.97	5.57	5.37	6.01	6.01	135.38	122.15	144.00	144.00	0.00	0.00	21.85	17.89
United Kingdom	1.72	1.53	1.63	1.63	8.13	7.30	7.34	7.34	13.98	11.15	11.96	11.96	0.00	0.00	0.81	7.29
Serbia	0.73	0.63	0.60	0.60	4.69	5.28	5.50	5.50	3.40	3.30	3.30	3.30	0.00	0.00	0.00	0.00
China	23.63	23.59	23.58	23.58	5.78	5.94	5.94	5.94	136.59	140.10	140.07	140.07	0.00	0.00	-0.03	-0.02
South Asia																
India	31.40	31.83	32.80	32.80	3.52	3.56	3.60	3.60	110.55	113.29	117.95	117.95	0.00	0.00	4.65	4.11
Pakistan	9.03	9.73	9.10	9.10	3.12	3.23	3.18	3.18	28.16	31.44	28.98	28.98	0.00	0.00	-2.46	-7.82
Afghanistan	2.02	2.12	2.25	2.25	2.15	2.28	2.13	2.13	4.35	4.83	4.80	4.80	0.00	0.00	-0.03	-0.56
Nepal	0.68	0.72	0.71	0.71	2.99	2.92	3.10	3.10	2.04	2.10	2.20	2.20	0.00	0.00	0.10	4.76
Former Soviet Union - 12																
Russia	28.83	27.80	26.30	26.30	3.17	2.94	3.40	3.40	91.50	81.60	89.50	89.50	0.00	0.00	7.90	9.68
Russia Winter	15.27	15.70	15.50	15.50	4.19	3.55	4.06	4.06	64.00	55.80	63.00	63.00	0.00	0.00	7.20	12.90
Russia Spring	13.56	12.10	10.80	10.80	2.03	2.13	2.45	2.45	27.50	25.80	26.50	26.50	0.00	0.00	0.70	2.71
Ukraine	5.01	5.20	5.50	5.50	4.59	4.50	4.18	4.36	23.00	23.40	23.00	24.00	1.00	4.35	0.60	2.56
Kazakhstan	13.13	13.07	12.20	12.20	0.92	1.42	1.55	1.58	12.11	18.58	18.90	19.33	0.43	2.25	0.75	4.03
Uzbekistan	1.23	1.30	1.32	1.32	5.27	5.18	4.64	4.64	6.47	6.73	6.10	6.10	0.00	0.00	-0.63	-9.35
Belarus	0.66	0.72	0.73	0.73	3.61	3.82	3.70	3.70	2.40	2.75	2.70	2.70	0.00	0.00	-0.05	-1.82
Canada	10.71	10.65	10.62	10.62	3.12	3.37	3.76	3.76	33.41	35.94	39.96	39.96	0.00	0.00	4.02	11.17
South America																
Argentina	5.58	6.34	6.50	6.50	2.84	2.92	4.28	4.28	15.85	18.51	27.80	27.80	0.00	0.00	9.29	50.19
Brazil	3.47	3.06	2.45	2.45	2.33	2.58	3.27	3.27	8.10	7.89	8.00	8.00	0.00	0.00	0.11	1.41
Australia	12.37	13.06	12.70	12.40	2.10	2.61	2.91	2.90	25.96	34.11	37.00	36.00	-1.00	-2.70	1.89	5.54
Africa																
Egypt	1.35	1.30	1.33	1.33	6.57	6.92	6.92	6.92	8.87	9.00	9.20	9.20	0.00	0.00	0.20	2.22
Morocco	2.43	2.20	2.20	2.20	1.71	1.12	1.59	1.59	4.16	2.46	3.50	3.50	0.00	0.00	1.04	42.28
Algeria	1.80	1.80	1.80	1.80	1.50	1.67	1.78	1.78	2.70	3.00	3.20	3.20	0.00	0.00	0.20	6.67
Ethiopia	1.90	1.95	2.00	2.00	3.05	3.18	3.20	3.20	5.80	6.20	6.40	6.40	0.00	0.00	0.20	3.23
Middle East																
Turkey	7.20	7.25	7.30	7.30	2.92	2.62	2.40	2.40	21.00	19.00	17.50	17.50	0.00	0.00	-1.50	-7.89
Iran	6.20	6.20	6.20	6.20	2.26	2.58	2.18	2.18	14.00	16.00	13.50	13.50	0.00	0.00	-2.50	-15.63
Iraq	2.60	2.70	2.40	2.40	2.00	2.22	1.83	1.83	5.20	6.00	4.40	4.40	0.00	0.00	-1.60	-26.67
Syria	1.50	1.40	1.20	1.20	2.03	2.14	0.96	0.96	3.03	3.00	1.15	1.15	0.00	0.00	-1.85	-61.67
Mexico	0.56	0.47	0.32	0.32	6.21	5.66	5.47	5.47	3.48	2.65	1.75	1.75	0.00	0.00	-0.90	-33.91
Others	7.18	7.21	7.12	7.12	2.92	2.97	2.95	2.93	20.95	21.42	20.98	20.88	-0.10	-0.50	-0.55	-2.55

Table 03 Total Coarse Grain Area, Yield, and Production

Country / Region	Area (Million hectares)				Yield (Metric tons per hectare)				Production (Million metric tons)				Change in Production			
	Prel.		2025/26 Proj.		Prel.		2025/26 Proj.		Prel.		2025/26 Proj.		From last month		From last year	
	2023/24	2024/25	Feb	Mar	2023/24	2024/25	Feb	Mar	2023/24	2024/25	Feb	Mar	MMT	Percent	MMT	Percent
World	339.72	335.35	339.80	340.18	4.44	4.51	4.68	4.68	1,507.47	1,511.32	1,590.43	1,593.13	2.70	0.17	81.82	5.41
United States	38.99	37.16	40.60	40.60	10.33	10.53	11.03	11.03	402.88	391.51	447.83	447.83	0.00	0.00	56.32	14.38
Total Foreign	300.73	298.18	299.20	299.58	3.67	3.76	3.82	3.82	1,104.59	1,119.80	1,142.60	1,145.30	2.70	0.24	25.50	2.28
China	46.71	47.24	47.54	47.54	6.37	6.42	6.53	6.53	297.38	303.47	310.19	310.19	0.00	0.00	6.72	2.22
European Union	26.02	26.31	25.65	25.65	5.27	5.20	5.51	5.51	137.04	136.80	141.31	141.31	0.00	0.00	4.51	3.30
United Kingdom	1.38	1.47	1.37	1.37	5.87	5.64	5.54	5.54	8.08	8.30	7.61	7.61	0.00	0.00	-0.70	-8.40
South America																
Brazil	23.77	24.55	24.79	25.14	5.25	5.85	5.55	5.53	124.81	143.59	137.61	139.10	1.49	1.08	-4.48	-3.12
Argentina	10.05	9.35	9.99	9.99	5.97	6.25	6.24	6.14	59.98	58.46	62.32	61.32	-1.00	-1.60	2.87	4.90
Former Soviet Union - 12																
Russia	12.88	11.74	11.03	11.03	3.30	2.96	3.54	3.54	42.54	34.78	39.05	39.05	0.00	0.00	4.28	12.29
Ukraine	6.24	6.05	6.06	6.18	6.38	5.53	5.87	6.00	39.78	33.47	35.58	37.02	1.44	4.05	3.55	10.61
Kazakhstan	2.87	2.72	2.70	2.69	1.40	1.94	1.85	1.83	4.01	5.27	5.00	4.93	-0.07	-1.38	-0.34	-6.49
Belarus	0.93	1.17	1.17	1.17	3.54	3.36	3.56	3.56	3.28	3.92	4.16	4.16	0.00	0.00	0.24	6.12
Africa																
Nigeria	11.88	11.86	12.08	12.08	1.60	1.62	1.61	1.61	19.00	19.18	19.49	19.49	0.00	0.00	0.31	1.62
South Africa	3.18	3.15	3.20	3.20	4.38	5.60	5.33	5.33	13.94	17.62	17.04	17.04	0.00	0.00	-0.59	-3.32
Tanzania	5.18	5.15	5.05	5.05	1.74	1.87	1.60	1.60	9.03	9.63	8.08	8.08	0.00	0.00	-1.55	-16.05
Burkina Faso	3.98	4.20	4.10	4.10	1.16	1.08	1.13	1.13	4.63	4.55	4.65	4.65	0.00	0.00	0.10	2.20
Ethiopia	5.41	5.64	5.69	5.69	3.25	3.18	3.16	3.16	17.56	17.91	17.99	17.99	0.00	0.00	0.08	0.42
Egypt	1.12	1.09	1.02	1.02	7.19	7.22	7.41	7.41	8.07	7.88	7.57	7.57	0.00	0.00	-0.31	-3.93
Mali	5.24	4.90	5.10	5.10	1.31	1.55	1.37	1.37	6.86	7.58	7.00	7.00	0.00	0.00	-0.58	-7.63
India	25.02	25.75	25.03	25.03	2.28	2.39	2.48	2.48	57.16	61.55	62.12	62.12	0.00	0.00	0.57	0.92
Southeast Asia																
Indonesia	3.70	3.50	3.50	3.50	3.43	3.74	3.71	3.71	12.70	13.10	13.00	13.00	0.00	0.00	-0.10	-0.76
Philippines	2.49	2.45	2.48	2.48	3.26	3.40	3.33	3.33	8.12	8.33	8.27	8.27	0.00	0.00	-0.06	-0.73
Vietnam	0.89	0.87	0.84	0.84	5.01	5.03	5.03	5.03	4.44	4.35	4.20	4.20	0.00	0.00	-0.15	-3.45
Thailand	1.25	1.24	1.25	1.25	4.29	4.32	4.45	4.45	5.35	5.35	5.55	5.55	0.00	0.00	0.20	3.74
Mexico	7.71	8.06	8.28	8.28	3.75	3.51	3.73	3.73	28.93	28.27	30.89	30.89	0.00	0.00	2.62	9.27
Canada	5.24	5.05	5.05	5.04	5.25	5.45	5.84	5.84	27.52	27.52	29.48	29.41	-0.07	-0.24	1.89	6.86
Australia	5.61	6.08	6.45	6.42	2.58	2.91	3.09	3.26	14.48	17.70	19.92	20.95	1.03	5.18	3.26	18.40
Middle East																
Turkey	4.59	4.55	4.35	4.35	3.72	3.18	3.25	3.25	17.05	14.46	14.15	14.15	0.00	0.00	-0.31	-2.14
Iran	1.86	1.81	1.86	1.86	2.38	2.50	2.38	2.38	4.42	4.52	4.42	4.42	0.00	0.00	-0.10	-2.21
Others	75.56	72.27	73.59	73.56	1.70	1.69	1.71	1.71	128.44	122.26	125.96	125.84	-0.13	-0.10	3.57	2.92

World and Selected Countries and Regions; Coarse Grain includes: Barley, Corn, Millet, Mixed Grains, Oats, Rye and Sorghum

Table 04 Corn Area, Yield, and Production

Country / Region	Area (Million hectares)				Yield (Metric tons per hectare)				Production (Million metric tons)				Change in Production			
	2023/24	Prel.	2025/26 Proj.		2023/24	Prel.	2025/26 Proj.		2023/24	Prel.	2025/26 Proj.		From last month		From last year	
		2024/25	Feb	Mar		2024/25	Feb	Mar		2024/25	Feb	Mar	MMT	Percent	MMT	Percent
World	208.01	203.52	210.06	210.40	5.92	6.05	6.17	6.17	1,231.13	1,230.59	1,295.91	1,297.44	1.52	0.12	66.85	5.43
United States	35.01	33.61	36.93	36.93	11.13	11.26	11.71	11.71	389.67	378.27	432.34	432.34	0.00	0.00	54.07	14.30
Total Foreign	173.00	169.91	173.13	173.47	4.86	5.02	4.99	4.99	841.46	852.32	863.57	865.09	1.52	0.18	12.78	1.50
China	44.22	44.74	44.96	44.96	6.53	6.59	6.70	6.70	288.84	294.92	301.24	301.24	0.00	0.00	6.32	2.14
South America																
Brazil	21.65	22.30	22.60	22.80	5.50	6.10	5.80	5.79	119.00	136.00	131.00	132.00	1.00	0.76	-4.00	-2.94
Argentina	7.73	6.90	7.50	7.50	6.68	7.25	7.07	6.93	51.60	50.00	53.00	52.00	-1.00	-1.89	2.00	4.00
Bolivia	0.44	0.43	0.44	0.44	2.53	2.56	2.61	2.61	1.12	1.10	1.15	1.15	0.00	0.00	0.05	4.55
European Union	8.28	8.68	8.17	8.17	7.48	6.80	6.97	6.97	61.95	59.02	56.95	56.95	0.00	0.00	-2.07	-3.51
Africa																
South Africa	2.98	2.96	3.00	3.00	4.50	5.77	5.50	5.50	13.43	17.06	16.50	16.50	0.00	0.00	-0.56	-3.28
Nigeria	5.10	5.06	5.20	5.20	2.17	2.22	2.20	2.20	11.05	11.22	11.44	11.44	0.00	0.00	0.22	1.99
Ethiopia	2.50	2.55	2.60	2.60	4.00	4.00	3.96	3.96	10.00	10.20	10.30	10.30	0.00	0.00	0.10	0.98
Egypt	0.95	0.92	0.85	0.85	7.58	7.61	7.88	7.88	7.20	7.00	6.70	6.70	0.00	0.00	-0.30	-4.29
Tanzania	4.20	4.10	4.00	4.00	1.91	2.07	1.75	1.75	8.01	8.50	7.00	7.00	0.00	0.00	-1.50	-17.65
Malawi	1.79	1.50	1.80	1.80	1.96	2.00	1.67	1.67	3.51	3.00	3.00	3.00	0.00	0.00	0.00	0.00
Zambia	1.42	0.69	1.69	1.69	2.30	2.21	2.16	2.16	3.26	1.51	3.66	3.66	0.00	0.00	2.15	141.96
Kenya	2.43	2.10	2.30	2.30	1.76	1.81	1.91	1.91	4.29	3.80	4.40	4.40	0.00	0.00	0.60	15.79
Uganda	2.27	2.30	2.30	2.30	2.18	2.17	2.17	2.17	4.95	5.00	5.00	5.00	0.00	0.00	0.00	0.00
Zimbabwe	1.00	0.90	1.00	1.00	1.50	0.71	1.50	1.50	1.50	0.64	1.50	1.50	0.00	0.00	0.87	136.22
Former Soviet Union - 12																
Ukraine	4.20	4.10	4.20	4.37	7.74	6.54	6.90	7.03	32.50	26.80	29.00	30.70	1.70	5.86	3.90	14.55
Russia	2.40	2.70	2.30	2.30	6.92	5.19	6.30	6.30	16.60	14.00	14.50	14.50	0.00	0.00	0.50	3.57
South Asia																
India	11.24	11.20	11.50	11.50	3.35	3.78	3.74	3.74	37.67	42.28	43.00	43.00	0.00	0.00	0.72	1.70
Pakistan	1.64	1.44	1.56	1.56	6.00	5.73	6.28	6.28	9.85	8.24	9.80	9.80	0.00	0.00	1.56	18.95
Nepal	0.92	0.97	0.97	0.97	3.49	3.11	3.21	3.21	3.19	3.00	3.10	3.10	0.00	0.00	0.10	3.33
Southeast Asia																
Indonesia	3.70	3.50	3.50	3.50	3.43	3.74	3.71	3.71	12.70	13.10	13.00	13.00	0.00	0.00	-0.10	-0.76
Philippines	2.49	2.45	2.48	2.48	3.26	3.40	3.33	3.33	8.12	8.33	8.27	8.27	0.00	0.00	-0.06	-0.73
Vietnam	0.89	0.87	0.84	0.84	5.01	5.03	5.03	5.03	4.44	4.35	4.20	4.20	0.00	0.00	-0.15	-3.45
Thailand	1.22	1.21	1.22	1.22	4.34	4.38	4.51	4.51	5.30	5.30	5.50	5.50	0.00	0.00	0.20	3.77
Mexico	6.10	6.50	6.70	6.70	3.86	3.55	3.84	3.84	23.55	23.10	25.70	25.70	0.00	0.00	2.60	11.26
Canada	1.52	1.45	1.46	1.46	10.15	10.59	10.18	10.18	15.42	15.35	14.87	14.87	0.00	0.00	-0.48	-3.12
Turkey	0.65	0.56	0.61	0.61	12.92	12.14	12.95	12.95	8.40	6.80	7.90	7.90	0.00	0.00	1.10	16.18
Others	29.08	26.85	27.39	27.36	2.55	2.71	2.63	2.62	74.03	72.71	71.90	71.72	-0.18	-0.25	-0.99	-1.36

World and Selected Countries and Regions

Table 05 Barley Area, Yield, and Production

Country / Region	Area (Million hectares)				Yield (Metric tons per hectare)				Production (Million metric tons)				Change in Production			
	Prel.		2025/26 Proj.		Prel.		2025/26 Proj.		Prel.		2025/26 Proj.		From last month		From last year	
	2023/24	2024/25	Feb	Mar	2023/24	2024/25	Feb	Mar	2023/24	2024/25	Feb	Mar	MMT	Percent	MMT	Percent
World	46.92	45.93	44.79	44.70	3.06	3.12	3.43	3.45	143.50	143.39	153.72	154.25	0.53	0.35	10.86	7.57
United States	1.04	0.76	0.71	0.71	3.89	4.12	4.30	4.30	4.05	3.15	3.07	3.07	0.00	0.00	-0.08	-2.48
Total Foreign	45.88	45.17	44.08	43.99	3.04	3.10	3.42	3.44	139.45	140.25	150.65	151.18	0.53	0.35	10.94	7.80
European Union	10.35	10.31	10.20	10.20	4.63	4.88	5.49	5.49	47.90	50.29	56.00	56.00	0.00	0.00	5.72	11.37
United Kingdom	1.14	1.20	1.10	1.10	6.12	5.91	5.79	5.79	6.96	7.09	6.37	6.37	0.00	0.00	-0.72	-10.21
Former Soviet Union - 12																
Russia	7.65	6.60	6.40	6.40	2.68	2.46	3.03	3.03	20.50	16.25	19.40	19.40	0.00	0.00	3.15	19.38
Ukraine	1.68	1.60	1.60	1.55	3.78	3.63	3.69	3.61	6.35	5.80	5.90	5.60	-0.30	-5.08	-0.20	-3.45
Kazakhstan	2.43	2.28	2.30	2.28	1.08	1.68	1.61	1.57	2.61	3.84	3.70	3.59	-0.11	-2.89	-0.25	-6.43
Belarus	0.28	0.37	0.35	0.35	4.09	2.97	3.57	3.57	1.15	1.10	1.25	1.25	0.00	0.00	0.15	13.64
Azerbaijan	0.36	0.36	0.37	0.37	2.99	3.06	2.97	2.97	1.07	1.10	1.10	1.10	0.00	0.00	0.00	0.00
Canada	2.70	2.39	2.28	2.28	3.29	3.40	4.27	4.27	8.91	8.14	9.73	9.73	0.00	0.00	1.58	19.41
Australia	4.21	4.62	4.80	4.77	2.57	2.87	3.23	3.42	10.80	13.27	15.50	16.33	0.83	5.33	3.06	23.08
Middle East																
Turkey	3.70	3.75	3.50	3.50	2.16	1.87	1.60	1.60	8.00	7.00	5.60	5.60	0.00	0.00	-1.40	-20.00
Iran	1.65	1.60	1.65	1.65	1.82	1.94	1.82	1.82	3.00	3.10	3.00	3.00	0.00	0.00	-0.10	-3.23
Iraq	0.16	1.00	0.60	0.60	1.29	1.40	1.08	1.08	0.20	1.40	0.65	0.65	0.00	0.00	-0.75	-53.57
Syria	1.43	1.10	1.00	1.00	0.88	1.09	0.35	0.35	1.26	1.20	0.35	0.35	0.00	0.00	-0.85	-70.83
Africa																
Ethiopia	0.98	0.98	0.98	0.98	2.50	2.54	2.54	2.54	2.45	2.49	2.49	2.49	0.00	0.00	0.00	0.00
Morocco	1.17	0.80	0.80	0.80	1.15	0.83	1.19	1.19	1.35	0.66	0.95	0.95	0.00	0.00	0.29	43.94
Algeria	1.03	1.03	1.03	1.03	1.00	1.17	1.32	1.32	1.03	1.20	1.35	1.35	0.00	0.00	0.15	12.50
Tunisia	0.11	0.23	0.29	0.29	0.83	1.21	1.90	1.90	0.09	0.27	0.55	0.55	0.00	0.00	0.28	102.21
South Africa	0.11	0.10	0.10	0.10	3.49	3.68	3.50	3.50	0.38	0.37	0.35	0.35	0.00	0.00	-0.02	-5.91
South America																
Argentina	1.30	1.31	1.30	1.30	3.92	3.67	4.31	4.31	5.10	4.82	5.60	5.60	0.00	0.00	0.78	16.09
Uruguay	0.19	0.27	0.17	0.17	4.87	4.32	4.85	4.85	0.92	1.17	0.80	0.80	0.00	0.00	-0.37	-31.86
Brazil	0.14	0.12	0.14	0.14	2.90	3.56	3.78	4.37	0.39	0.44	0.51	0.61	0.10	19.02	0.17	38.58
India	0.63	0.55	0.53	0.53	3.05	3.08	3.63	3.63	1.91	1.70	1.92	1.92	0.00	0.00	0.22	12.95
China	0.50	0.50	0.56	0.56	4.00	4.00	4.11	4.11	2.00	2.00	2.30	2.30	0.00	0.00	0.30	15.00
Mexico	0.29	0.32	0.30	0.30	2.72	2.83	2.70	2.70	0.78	0.89	0.81	0.81	0.00	0.00	-0.08	-8.99
Afghanistan	0.07	0.10	0.07	0.07	1.36	1.88	1.54	1.54	0.09	0.19	0.10	0.10	0.00	0.00	-0.09	-47.37
Others	1.66	1.67	1.69	1.69	2.57	2.67	2.60	2.61	4.26	4.47	4.39	4.40	0.02	0.34	-0.07	-1.48

World and Selected Countries and Regions

Table 06 Oats Area, Yield, and Production

Country / Region	Area (Million hectares)				Yield (Metric tons per hectare)				Production (Million metric tons)				Change in Production			
	2023/24	Prel.	2025/26 Proj.		2023/24	Prel.	2025/26 Proj.		2023/24	Prel.	2025/26 Proj.		From last month		From last year	
		2024/25	Feb	Mar		2024/25	Feb	Mar		2024/25	Feb	Mar	MMT	Percent	MMT	Percent
World	8.35	8.72	9.00	9.07	2.32	2.59	2.69	2.72	19.40	22.57	24.25	24.65	0.40	1.65	2.09	9.24
United States	0.34	0.36	0.38	0.38	2.46	2.74	2.65	2.65	0.83	0.99	1.01	1.01	0.00	0.00	0.02	1.92
Total Foreign	8.01	8.35	8.62	8.68	2.32	2.58	2.70	2.72	18.57	21.58	23.24	23.64	0.40	1.73	2.07	9.58
European Union	2.28	2.48	2.54	2.54	2.60	3.12	3.16	3.16	5.94	7.76	8.00	8.00	0.00	0.00	0.24	3.13
Former Soviet Union - 12																
Russia	1.77	1.60	1.70	1.70	1.86	1.88	2.24	2.24	3.30	3.00	3.80	3.80	0.00	0.00	0.80	26.67
Ukraine	0.17	0.17	0.14	0.14	2.53	2.71	2.57	2.86	0.43	0.46	0.36	0.40	0.04	11.11	-0.06	-13.04
Belarus	0.16	0.16	0.15	0.15	2.26	2.06	2.33	2.33	0.35	0.32	0.35	0.35	0.00	0.00	0.03	9.38
Kazakhstan	0.19	0.19	0.18	0.18	0.79	1.71	1.14	1.57	0.15	0.33	0.20	0.27	0.07	37.00	-0.06	-16.97
Canada	0.83	0.99	1.05	1.05	3.20	3.38	3.74	3.74	2.64	3.36	3.92	3.92	0.00	0.00	0.56	16.74
South America																
Argentina	0.28	0.30	0.30	0.30	2.03	1.87	1.75	1.75	0.57	0.56	0.53	0.53	0.00	0.00	-0.03	-5.58
Brazil	0.52	0.49	0.50	0.55	1.89	2.14	2.40	2.37	0.98	1.04	1.20	1.29	0.09	7.67	0.25	23.99
Chile	0.09	0.10	0.09	0.09	5.39	4.75	5.00	5.00	0.46	0.48	0.45	0.45	0.00	0.00	-0.03	-5.26
Uruguay	0.02	0.03	0.02	0.02	2.44	2.37	2.33	2.33	0.04	0.06	0.04	0.04	0.00	0.00	-0.03	-45.31
Oceania																
Australia	0.68	0.74	0.85	0.87	1.51	1.77	1.76	1.96	1.02	1.32	1.50	1.70	0.20	13.00	0.38	28.90
New Zealand	0.00	0.00	0.01	0.01	7.50	5.75	6.00	6.00	0.03	0.02	0.03	0.03	0.00	0.00	0.01	30.43
China	0.46	0.47	0.47	0.47	1.83	1.83	1.83	1.83	0.84	0.85	0.85	0.85	0.00	0.00	0.00	0.00
Africa																
Algeria	0.08	0.08	0.08	0.08	1.31	1.31	1.31	1.31	0.11	0.11	0.11	0.11	0.00	0.00	0.00	0.00
Morocco	0.02	0.02	0.02	0.02	0.40	0.40	0.40	0.40	0.01	0.01	0.01	0.01	0.00	0.00	0.00	0.00
South Africa	0.03	0.03	0.04	0.04	1.46	1.39	1.29	1.29	0.04	0.04	0.05	0.05	0.00	0.00	0.00	4.65
Other Europe																
United Kingdom	0.17	0.20	0.20	0.20	4.97	4.93	4.82	4.82	0.83	0.99	0.96	0.96	0.00	0.00	-0.02	-2.33
Norway	0.07	0.07	0.07	0.07	4.29	4.29	4.29	4.29	0.30	0.30	0.30	0.30	0.00	0.00	0.00	0.00
Serbia	0.02	0.02	0.02	0.02	3.00	3.00	3.00	3.00	0.06	0.06	0.06	0.06	0.00	0.00	0.00	0.00
Albania	0.02	0.02	0.02	0.02	2.27	2.27	2.27	2.27	0.03	0.03	0.03	0.03	0.00	0.00	0.00	0.00
Bosnia and Herzegovina	0.01	0.01	0.01	0.01	3.43	3.43	3.38	3.38	0.02	0.02	0.03	0.03	0.00	0.00	0.00	12.50
Turkey	0.13	0.13	0.14	0.14	2.60	2.62	2.59	2.59	0.33	0.34	0.35	0.35	0.00	0.00	0.01	2.94
Mexico	0.03	0.04	0.04	0.04	2.40	2.00	2.00	2.00	0.06	0.08	0.08	0.08	0.00	0.00	0.00	0.00
Others	0.02	0.03	0.03	0.03	1.68	1.78	1.76	1.76	0.04	0.05	0.05	0.05	0.00	0.00	0.00	6.25

World and Selected Countries and Regions

Table 07 Rye Area, Yield, and Production

Country / Region	Area (Million hectares)				Yield (Metric tons per hectare)				Production (Million metric tons)				Change in Production						
	2023/24	Prel.		2025/26 Proj.		2023/24	Prel.		2025/26 Proj.		2023/24	Prel.		2025/26 Proj.		From last month		From last year	
		2024/25	Feb	Mar	2024/25		Feb	Mar	2024/25	Feb		Mar	MMT	Percent	MMT	Percent			
World	3.66	3.36	3.12	3.11	3.21	3.17	3.47	3.47	11.72	10.63	10.84	10.78	-0.05	-0.47	0.15	1.45			
United States	0.13	0.16	0.14	0.14	2.03	2.29	2.29	2.29	0.26	0.37	0.32	0.32	0.00	0.00	-0.06	-15.51			
Total Foreign	3.53	3.19	2.98	2.97	3.25	3.21	3.53	3.52	11.45	10.26	10.52	10.47	-0.05	-0.48	0.21	2.07			
European Union	1.88	1.73	1.67	1.67	4.07	3.98	4.31	4.31	7.65	6.89	7.20	7.20	0.00	0.00	0.31	4.44			
Former Soviet Union - 12																			
Russia	0.79	0.58	0.41	0.41	2.15	2.07	2.44	2.44	1.70	1.20	1.00	1.00	0.00	0.00	-0.20	-16.67			
Belarus	0.31	0.34	0.34	0.34	2.52	2.35	2.24	2.24	0.78	0.80	0.76	0.76	0.00	0.00	-0.04	-5.00			
Ukraine	0.08	0.07	0.07	0.07	3.00	3.14	3.15	3.23	0.24	0.22	0.21	0.21	0.01	2.44	-0.01	-4.55			
Kazakhstan	0.02	0.02	0.02	0.02	0.86	1.55	1.20	1.55	0.02	0.03	0.02	0.03	0.01	72.22	0.00	0.00			
Turkey	0.11	0.11	0.11	0.11	2.91	2.91	2.86	2.86	0.32	0.32	0.30	0.30	0.00	0.00	-0.02	-6.25			
Canada	0.12	0.12	0.17	0.16	3.09	3.60	4.02	3.93	0.36	0.42	0.68	0.61	-0.07	-10.25	0.19	45.61			
South America																			
Argentina	0.12	0.13	0.11	0.11	1.85	1.69	1.73	1.73	0.22	0.22	0.19	0.19	0.00	0.00	-0.03	-11.63			
Other Europe																			
Bosnia and Herzegovina	0.00	0.00	0.00	0.00	3.00	3.00	3.00	3.00	0.01	0.01	0.01	0.01	0.00	0.00	0.00	50.00			
Switzerland	0.00	0.00	0.00	0.00	5.00	5.00	5.00	5.00	0.01	0.01	0.01	0.01	0.00	0.00	0.00	0.00			
Serbia	0.01	0.01	0.01	0.01	3.33	3.00	3.00	3.00	0.02	0.02	0.02	0.02	0.00	0.00	0.00	0.00			
Australia	0.05	0.05	0.05	0.05	0.71	0.71	0.71	0.71	0.03	0.03	0.03	0.03	0.00	0.00	0.00	0.00			
Others	0.04	0.04	0.04	0.04	2.32	2.12	2.29	2.32	0.10	0.09	0.09	0.10	0.00	1.06	0.01	6.74			

World and Selected Countries and Regions

Table 08 Sorghum Area, Yield, and Production

Country / Region	Area (Million hectares)				Yield (Metric tons per hectare)				Production (Million metric tons)				Change in Production			
	Prel.		2025/26 Proj.		Prel.		2025/26 Proj.		Prel.		2025/26 Proj.		From last month		From last year	
	2023/24	2024/25	Feb	Mar	2023/24	2024/25	Feb	Mar	2023/24	2024/25	Feb	Mar	MMT	Percent	MMT	Percent
World	39.44	40.41	40.05	40.13	1.49	1.56	1.58	1.58	58.82	63.06	63.20	63.50	0.30	0.47	0.44	0.70
United States	2.48	2.27	2.44	2.44	3.26	3.85	4.56	4.56	8.07	8.73	11.10	11.10	0.00	0.00	2.36	27.04
Total Foreign	36.97	38.14	37.62	37.70	1.37	1.42	1.39	1.39	50.75	54.32	52.10	52.40	0.30	0.58	-1.92	-3.54
Africa																
Nigeria	5.24	5.25	5.32	5.32	1.22	1.22	1.22	1.22	6.40	6.42	6.50	6.50	0.00	0.00	0.08	1.29
Ethiopia	1.48	1.65	1.65	1.65	2.71	2.48	2.48	2.48	4.01	4.10	4.10	4.10	0.00	0.00	0.00	0.00
Sudan	5.99	6.00	6.00	6.00	0.51	0.55	0.55	0.55	3.06	3.30	3.30	3.30	0.00	0.00	0.00	0.00
Burkina Faso	1.79	1.90	1.90	1.90	0.99	1.00	1.00	1.00	1.77	1.90	1.90	1.90	0.00	0.00	0.00	0.00
Mali	1.63	1.50	1.60	1.60	0.94	1.09	0.94	0.94	1.53	1.64	1.50	1.50	0.00	0.00	-0.14	-8.54
Niger	3.70	3.70	3.70	3.70	0.46	0.51	0.52	0.52	1.70	1.90	1.91	1.91	0.00	0.00	0.01	0.37
Cameroon	0.74	0.74	0.74	0.74	1.62	1.62	1.62	1.62	1.20	1.20	1.20	1.20	0.00	0.00	0.00	0.00
Tanzania	0.68	0.75	0.75	0.75	1.08	1.07	1.00	1.00	0.74	0.80	0.75	0.75	0.00	0.00	-0.05	-6.25
Egypt	0.15	0.15	0.15	0.15	5.20	5.27	5.20	5.20	0.78	0.79	0.78	0.78	0.00	0.00	-0.01	-1.27
Uganda	0.32	0.32	0.32	0.32	0.83	0.84	0.84	0.84	0.27	0.27	0.27	0.27	0.00	0.00	0.00	0.00
Ghana	0.31	0.31	0.31	0.31	1.42	1.13	1.21	1.21	0.44	0.35	0.38	0.38	0.00	0.00	0.03	7.14
Mozambique	0.24	0.28	0.28	0.28	0.60	0.33	0.55	0.55	0.14	0.09	0.15	0.15	0.00	0.00	0.06	66.67
South Africa	0.04	0.04	0.04	0.04	2.33	3.63	3.50	3.50	0.10	0.15	0.14	0.14	0.00	0.00	-0.01	-3.45
Mexico	1.30	1.20	1.24	1.24	3.51	3.50	3.47	3.47	4.54	4.20	4.30	4.30	0.00	0.00	0.10	2.38
South America																
Argentina	0.63	0.71	0.78	0.78	3.99	4.02	3.85	3.85	2.50	2.85	3.00	3.00	0.00	0.00	0.15	5.15
Brazil	1.46	1.63	1.55	1.65	3.03	3.74	3.16	3.15	4.43	6.10	4.90	5.20	0.30	6.12	-0.90	-14.78
South Asia																
India	4.08	4.80	4.00	4.00	1.16	1.25	1.15	1.15	4.74	6.00	4.60	4.60	0.00	0.00	-1.40	-23.33
Pakistan	0.05	0.05	0.05	0.05	0.83	0.83	0.82	0.82	0.04	0.04	0.04	0.04	0.00	0.00	0.00	7.89
China	0.63	0.63	0.65	0.65	4.76	4.76	4.77	4.77	3.00	3.00	3.10	3.10	0.00	0.00	0.10	3.33
Australia	0.59	0.59	0.67	0.65	3.74	4.57	3.73	3.85	2.22	2.69	2.50	2.50	0.00	0.00	-0.19	-6.89
European Union	0.15	0.22	0.20	0.20	5.33	4.66	4.67	4.67	0.79	1.02	0.91	0.91	0.00	0.00	-0.11	-10.87
Others	5.78	5.74	5.73	5.73	1.10	0.96	1.03	1.03	6.37	5.52	5.88	5.88	0.00	0.00	0.36	6.47

World and Selected Countries and Regions

Table 09 Rice Area, Yield, and Production
World and Selected Countries and Regions

Country / Region	Area (Million hectares)				Yield (Metric tons per hectare)				Production (Million metric tons)				Change in Production			
	Prel.		2025/26 Proj.		Prel.		2025/26 Proj.		Prel.		2025/26 Proj.		From last month		From last year	
	2023/24	2024/25	Feb	Mar	2023/24	2024/25	Feb	Mar	2023/24	2024/25	Feb	Mar	MMT	Percent	MMT	Percent
World	167.84	172.54	172.16	172.16	4.67	4.69	4.70	4.70	523.93	541.65	541.28	541.28	-0.01	0.00	-0.37	-0.07
United States	1.16	1.16	1.11	1.11	8.56	8.69	8.45	8.45	6.92	7.05	6.56	6.56	0.00	0.00	-0.49	-6.95
Total Foreign	166.69	171.38	171.05	171.05	4.64	4.67	4.67	4.67	517.01	534.60	534.72	534.71	-0.01	0.00	0.12	0.02
East Asia																
China	28.95	29.01	29.00	29.00	7.14	7.15	7.21	7.21	144.62	145.28	146.33	146.33	0.00	0.00	1.05	0.73
Japan	1.48	1.46	1.48	1.48	6.78	6.87	7.00	7.00	7.30	7.29	7.54	7.54	0.00	0.00	0.25	3.37
Korea, South	0.71	0.70	0.68	0.68	6.92	6.85	6.90	6.90	3.70	3.59	3.54	3.54	0.00	0.00	-0.05	-1.26
Korea, North	0.53	0.54	0.54	0.54	4.18	4.18	4.18	4.18	1.45	1.48	1.48	1.48	0.00	0.00	0.00	0.00
South Asia																
India	47.83	51.42	52.00	52.00	4.32	4.38	4.39	4.39	137.83	150.00	152.00	152.00	0.00	0.00	2.00	1.33
Bangladesh	11.75	11.40	11.75	11.75	4.72	4.82	4.81	4.81	37.00	36.60	37.65	37.65	0.00	0.00	1.05	2.87
Pakistan	3.64	3.90	3.60	3.60	4.07	3.74	3.92	3.92	9.87	9.72	9.40	9.40	0.00	0.00	-0.32	-3.29
Nepal	1.44	1.42	1.46	1.46	3.98	4.19	3.91	3.91	3.81	3.97	3.80	3.80	0.00	0.00	-0.17	-4.21
Sri Lanka	1.14	1.13	1.15	1.15	3.97	4.18	4.22	4.22	3.09	3.21	3.30	3.30	0.00	0.00	0.09	2.77
Southeast Asia																
Indonesia	11.00	11.40	11.30	11.30	4.73	4.71	4.68	4.68	33.02	34.10	33.60	33.60	0.00	0.00	-0.50	-1.47
Vietnam	7.11	6.95	6.80	6.80	6.12	6.16	6.12	6.12	27.20	26.75	26.00	26.00	0.00	0.00	-0.75	-2.80
Thailand	10.65	11.08	10.80	10.80	2.85	2.85	2.86	2.86	20.00	20.84	20.40	20.40	0.00	0.00	-0.44	-2.13
Burma	6.80	6.86	6.80	6.80	2.83	2.71	2.76	2.76	12.30	11.90	12.00	12.00	0.00	0.00	0.10	0.84
Philippines	4.74	4.70	4.70	4.70	4.12	4.18	4.15	4.15	12.33	12.37	12.30	12.30	0.00	0.00	-0.07	-0.57
Cambodia	3.80	3.86	3.80	3.80	3.47	3.61	3.54	3.54	8.05	8.50	8.20	8.20	0.00	0.00	-0.30	-3.53
Laos	0.99	0.95	0.96	0.96	3.21	3.17	3.22	3.22	2.01	1.90	1.95	1.95	0.00	0.00	0.05	2.63
Malaysia	0.59	0.61	0.59	0.59	3.91	3.97	3.91	3.91	1.50	1.58	1.50	1.50	0.00	0.00	-0.08	-4.76
South America																
Brazil	1.61	1.76	1.60	1.60	6.58	7.23	6.99	6.99	7.20	8.68	7.60	7.60	0.00	0.00	-1.08	-12.39
Peru	0.42	0.43	0.43	0.43	8.10	8.21	8.76	8.76	2.33	2.46	2.60	2.60	0.00	0.00	0.14	5.82
Africa																
Egypt	0.63	0.67	0.72	0.72	8.70	8.44	8.45	8.45	3.78	3.90	4.20	4.20	0.00	0.00	0.30	7.69
Madagascar	1.90	1.90	1.75	1.75	2.70	2.74	2.40	2.40	3.28	3.33	2.69	2.69	0.00	0.00	-0.64	-19.23
Nigeria	4.51	4.50	4.50	4.50	1.97	2.03	1.96	1.96	5.61	5.77	5.54	5.54	0.00	0.00	-0.22	-3.83
European Union	0.35	0.39	0.42	0.42	6.55	6.73	6.71	6.71	1.37	1.60	1.77	1.77	0.00	0.00	0.18	10.97
Iran	0.57	0.57	0.57	0.57	5.30	5.32	5.32	5.32	2.00	2.00	2.00	2.00	0.00	0.00	0.00	0.00
Others	13.56	13.76	13.65	13.65	2.95	3.07	3.04	3.04	26.39	27.81	27.33	27.33	-0.01	-0.02	-0.48	-1.73

Yield is on a rough basis, before the milling process. Production is on a milled basis, after the milling process.

Table 10 Total Oilseed Area, Yield, and Production

World and Selected Countries and Regions

Country / Region	Area (Million hectares)				Yield (Metric tons per hectare)				Production (Million metric tons)				Change in Production			
	2023/24	Prel.	2025/26 Proj.		2023/24	Prel.	2025/26 Proj.		2023/24	Prel.	2025/26 Proj.		From last month		From last year	
		2024/25	Feb	Mar		2024/25	Feb	Mar		2024/25	Feb	Mar	MMT	Percent	MMT	Percent
World Total	--	--	--	--	--	--	--	--	657.43	684.95	695.78	697.54	1.77	0.25	12.59	1.84
Total Foreign	--	--	--	--	--	--	--	--	535.27	556.36	569.54	571.30	1.77	0.31	14.95	2.69
Oilseed, Copra	--	--	--	--	--	--	--	--	6.20	5.79	5.86	5.86	0.00	0.00	0.07	1.21
Oilseed, Palm Kernel	--	--	--	--	--	--	--	--	19.61	20.29	21.01	21.01	0.00	0.00	0.72	3.57
Major Oilseeds	272.24	277.35	276.54	276.95	2.32	2.38	2.42	2.42	631.62	658.88	668.91	670.68	1.77	0.26	11.80	1.79
United States	37.98	40.13	37.93	37.93	3.22	3.20	3.33	3.33	122.16	128.59	126.24	126.24	0.00	0.00	-2.36	-1.83
Foreign Oilseeds	234.26	237.22	238.61	239.02	2.17	2.24	2.27	2.28	509.46	530.28	542.67	544.44	1.77	0.33	14.15	2.67
South America	74.75	78.31	79.68	80.32	3.12	3.28	3.30	3.29	232.89	256.63	263.26	264.32	1.06	0.40	7.69	3.00
Brazil	48.13	49.69	51.85	51.92	3.33	3.59	3.62	3.62	160.14	178.40	187.48	187.72	0.25	0.13	9.32	5.22
Argentina	19.30	21.04	20.13	20.70	2.81	2.81	2.78	2.75	54.24	59.10	56.05	56.86	0.81	1.44	-2.24	-3.79
Paraguay	3.90	3.92	3.97	3.97	2.88	2.67	2.96	2.96	11.22	10.44	11.75	11.75	0.00	0.00	1.31	12.55
Bolivia	1.90	2.13	2.15	2.15	1.85	1.90	1.98	1.98	3.52	4.04	4.25	4.25	0.00	0.00	0.21	5.20
Uruguay	1.44	1.43	1.49	1.49	2.44	3.04	2.30	2.30	3.51	4.35	3.42	3.42	0.00	0.00	-0.93	-21.39
China	26.22	26.08	26.43	26.43	2.55	2.60	2.63	2.64	66.92	67.81	69.61	69.77	0.17	0.24	1.96	2.89
South Asia	44.54	42.88	42.09	42.09	1.03	1.07	1.06	1.06	45.84	45.71	44.78	44.78	0.00	0.00	-0.92	-2.02
India	40.28	39.06	38.23	38.23	1.00	1.05	1.05	1.05	40.37	41.16	40.09	40.09	0.00	0.00	-1.07	-2.61
Pakistan	3.01	2.61	2.59	2.59	1.25	1.11	1.13	1.13	3.75	2.89	2.94	2.94	0.00	0.00	0.05	1.56
European Union	12.22	11.96	12.01	12.01	2.75	2.39	2.66	2.66	33.64	28.59	31.99	31.99	0.00	0.00	3.40	11.88
United Kingdom	0.39	0.29	0.24	0.24	3.11	2.81	3.75	3.75	1.22	0.82	0.90	0.90	0.00	0.00	0.08	9.22
Former Soviet Union - 12	29.07	31.27	32.37	32.04	2.04	1.88	1.82	1.84	59.20	58.92	58.88	58.95	0.07	0.11	0.03	0.04
Russia	14.85	16.45	17.70	17.70	1.89	1.74	1.79	1.79	28.10	28.60	31.60	31.60	0.00	0.00	3.00	10.49
Ukraine	10.00	10.35	9.50	9.25	2.55	2.32	2.12	2.16	25.45	24.00	20.10	20.00	-0.10	-0.50	-4.00	-16.67
Uzbekistan	1.04	1.02	0.95	0.95	1.13	1.20	1.11	1.11	1.18	1.23	1.06	1.06	0.00	0.00	-0.17	-14.01
Canada	11.16	11.16	11.05	11.05	2.38	2.41	2.61	2.61	26.59	26.90	28.86	28.86	0.00	0.00	1.97	7.31
Africa	25.82	25.10	24.67	24.67	0.96	1.03	1.04	1.04	24.69	25.97	25.64	25.64	0.00	0.00	-0.33	-1.29
Nigeria	5.90	6.02	6.06	6.06	1.10	1.10	1.14	1.14	6.47	6.64	6.89	6.89	0.00	0.00	0.26	3.86
South Africa	1.87	1.93	1.98	1.98	1.51	2.01	1.90	1.90	2.82	3.88	3.76	3.76	0.00	0.00	-0.12	-3.09
Tanzania	1.13	1.39	1.39	1.39	0.70	0.66	0.67	0.67	0.79	0.91	0.93	0.93	0.00	0.00	0.02	2.41
Southeast Asia	3.07	3.04	3.01	3.01	1.39	1.39	1.39	1.39	4.27	4.24	4.20	4.20	0.00	0.00	-0.05	-1.06
Burma	1.97	1.98	1.98	1.98	1.24	1.27	1.27	1.27	2.45	2.52	2.52	2.52	0.00	0.00	0.01	0.20
Indonesia	0.84	0.81	0.78	0.78	1.49	1.46	1.45	1.45	1.26	1.18	1.13	1.13	0.00	0.00	-0.05	-4.23
Australia	4.07	4.10	4.13	4.23	1.82	1.93	2.04	2.11	7.42	7.90	8.43	8.91	0.48	5.70	1.01	12.80
Turkey	1.27	1.29	1.29	1.29	2.43	2.45	2.22	2.22	3.08	3.15	2.85	2.85	0.00	0.00	-0.30	-9.41
Others	1.69	1.74	1.64	1.64	2.20	2.10	2.00	2.00	3.72	3.65	3.28	3.27	0.00	-0.12	-0.37	-10.18

World Total and Total Foreign: (Major Oilseeds plus copra and palm kernel) Major Oilseeds: (soybeans, sunflowerseeds, peanuts(inshell), cottonseed and rapeseed)

Table 11 Soybean Area, Yield, and Production

Country / Region	Area (Million hectares)				Yield (Metric tons per hectare)				Production (Million metric tons)				Change in Production			
	Prel.		2025/26 Proj.		Prel.		2025/26 Proj.		Prel.		2025/26 Proj.		From last month		From last year	
	2023/24	2024/25	Feb	Mar	2023/24	2024/25	Feb	Mar	2023/24	2024/25	Feb	Mar	MMT	Percent	MMT	Percent
World	140.66	146.53	144.08	144.18	2.82	2.92	2.97	2.96	396.40	427.19	428.18	427.18	-1.00	-0.23	-0.01	0.00
United States	33.29	34.89	32.55	32.55	3.40	3.41	3.56	3.56	113.27	119.05	115.99	115.99	0.00	0.00	-3.06	-2.57
Total Foreign	107.37	111.64	111.53	111.63	2.64	2.76	2.80	2.79	283.13	308.15	312.19	311.19	-1.00	-0.32	3.04	0.99
South America																
Brazil	46.15	47.40	49.40	49.40	3.35	3.62	3.64	3.64	154.50	171.50	180.00	180.00	0.00	0.00	8.50	4.96
Argentina	16.37	17.46	16.50	16.80	2.95	2.93	2.94	2.86	48.21	51.11	48.50	48.00	-0.50	-1.03	-3.11	-6.08
Paraguay	3.75	3.75	3.80	3.80	2.93	2.72	3.03	3.03	11.00	10.20	11.50	11.50	0.00	0.00	1.30	12.75
Bolivia	1.69	1.88	1.90	1.90	1.91	1.97	2.05	2.05	3.22	3.70	3.90	3.90	0.00	0.00	0.20	5.41
Uruguay	1.31	1.35	1.30	1.30	2.51	3.12	2.38	2.38	3.29	4.20	3.10	3.10	0.00	0.00	-1.10	-26.19
East Asia																
China	10.47	10.33	10.30	10.30	1.99	2.00	2.03	2.03	20.84	20.65	20.90	20.90	0.00	0.00	0.25	1.21
Korea, South	0.07	0.07	0.08	0.07	2.07	2.09	2.03	2.11	0.14	0.16	0.16	0.16	0.00	-2.50	0.00	0.65
Korea, North	0.16	0.16	0.16	0.16	1.15	1.15	1.15	1.15	0.18	0.18	0.18	0.18	0.00	0.00	0.00	0.00
Japan	0.16	0.15	0.16	0.16	1.59	1.77	1.61	1.61	0.25	0.27	0.25	0.25	0.00	0.00	-0.02	-8.42
India	13.20	13.00	12.00	12.00	0.90	0.97	0.88	0.88	11.88	12.58	10.50	10.50	0.00	0.00	-2.08	-16.55
Canada	2.26	2.29	2.32	2.32	3.11	3.32	2.93	2.93	7.04	7.61	6.79	6.79	0.00	0.00	-0.81	-10.69
Former Soviet Union - 12																
Russia	3.50	4.20	4.50	4.50	1.94	1.68	2.00	2.00	6.80	7.05	9.00	9.00	0.00	0.00	1.95	27.66
Ukraine	2.00	3.00	2.50	2.30	2.60	2.40	2.40	2.39	5.20	7.20	6.00	5.50	-0.50	-8.33	-1.70	-23.61
European Union	1.02	1.13	1.07	1.07	2.76	2.60	2.60	2.60	2.81	2.93	2.79	2.79	0.00	0.00	-0.15	-4.95
Southeast Asia																
Indonesia	0.32	0.31	0.29	0.29	1.17	1.13	1.10	1.10	0.38	0.35	0.32	0.32	0.00	0.00	-0.03	-8.57
Vietnam	0.03	0.03	0.03	0.03	1.67	1.62	1.62	1.62	0.05	0.04	0.04	0.04	0.00	0.00	0.00	0.00
Thailand	0.03	0.03	0.03	0.03	1.63	1.63	1.63	1.63	0.05	0.05	0.05	0.05	0.00	0.00	0.00	0.00
Burma	0.12	0.12	0.12	0.12	1.13	1.22	1.22	1.22	0.14	0.14	0.14	0.14	0.00	0.00	0.00	0.00
Serbia	0.24	0.24	0.18	0.18	2.77	2.00	1.67	1.67	0.65	0.47	0.30	0.30	0.00	0.00	-0.17	-36.17
Mexico	0.09	0.14	0.15	0.15	2.19	2.06	1.93	1.93	0.20	0.28	0.28	0.28	0.00	0.00	0.00	0.72
Africa																
South Africa	1.15	1.15	1.19	1.19	1.61	2.41	2.19	2.19	1.85	2.77	2.60	2.60	0.00	0.00	-0.17	-6.17
Nigeria	1.20	1.35	1.40	1.40	1.13	1.04	1.07	1.07	1.35	1.40	1.50	1.50	0.00	0.00	0.10	7.14
Zambia	0.60	0.59	0.59	0.59	1.26	1.31	1.31	1.31	0.76	0.77	0.77	0.77	0.00	0.00	0.00	0.00
Uganda	0.21	0.21	0.21	0.21	0.71	0.71	0.71	0.71	0.15	0.15	0.15	0.15	0.00	0.00	0.00	0.00
Middle East																
Iran	0.07	0.07	0.07	0.07	2.36	2.43	2.43	2.43	0.17	0.17	0.17	0.17	0.00	0.00	0.00	0.00
Turkey	0.04	0.04	0.04	0.04	4.00	3.95	3.95	3.95	0.14	0.15	0.15	0.15	0.00	0.00	0.00	0.00
Others	1.18	1.22	1.27	1.27	1.63	1.69	1.70	1.70	1.91	2.07	2.15	2.15	0.00	0.14	0.08	4.01

World and Selected Countries and Regions

Table 12 Cottonseed Area, Yield, and Production

Country / Region	Area (Million hectares)				Yield (Metric tons per hectare)				Production (Million metric tons)				Change in Production			
	Prel.		2025/26 Proj.		Prel.		2025/26 Proj.		Prel.		2025/26 Proj.		From last month		From last year	
	2023/24	2024/25	Feb	Mar	2023/24	2024/25	Feb	Mar	2023/24	2024/25	Feb	Mar	MMT	Percent	MMT	Percent
World	30.40	29.54	28.90	28.93	1.30	1.38	1.43	1.44	39.48	40.82	41.42	41.80	0.37	0.90	0.98	2.39
United States	2.61	3.16	3.16	3.16	1.27	1.22	1.21	1.21	3.31	3.87	3.81	3.81	0.00	0.00	-0.05	-1.35
Total Foreign	27.80	26.38	25.74	25.77	1.30	1.40	1.46	1.47	36.17	36.95	37.61	37.98	0.37	0.99	1.03	2.78
South Asia																
India	12.68	11.48	11.20	11.20	0.85	0.86	0.89	0.89	10.78	9.85	9.98	9.98	0.00	0.00	0.13	1.30
Pakistan	2.40	2.00	1.95	1.95	1.26	1.08	1.11	1.11	3.03	2.17	2.17	2.17	0.00	0.00	0.00	0.00
China	2.85	2.90	3.05	3.05	3.18	3.66	3.80	3.86	9.07	10.61	11.61	11.77	0.17	1.43	1.16	10.93
Former Soviet Union - 12																
Uzbekistan	1.03	1.00	0.93	0.93	1.10	1.18	1.07	1.07	1.14	1.18	1.00	1.00	0.00	0.00	-0.18	-14.98
Turkmenistan	0.50	0.50	0.52	0.52	0.63	0.63	0.64	0.64	0.31	0.31	0.33	0.33	0.00	0.00	0.02	6.39
Tajikistan	0.17	0.18	0.18	0.18	1.13	1.08	1.15	1.15	0.19	0.20	0.21	0.21	0.00	0.00	0.01	6.15
Kazakhstan	0.12	0.11	0.14	0.14	1.00	0.97	0.91	0.91	0.12	0.10	0.13	0.13	0.00	0.00	0.02	23.30
South America																
Brazil	1.66	1.95	2.10	2.17	2.91	2.90	2.96	2.98	4.84	5.64	6.23	6.47	0.25	4.00	0.83	14.71
Argentina	0.62	0.62	0.50	0.46	0.98	0.85	1.02	1.01	0.61	0.53	0.51	0.47	-0.04	-8.27	-0.06	-11.91
Middle East																
Turkey	0.44	0.47	0.40	0.40	2.37	2.77	2.48	2.48	1.04	1.29	0.98	0.98	0.00	0.00	-0.31	-24.11
Syria	0.03	0.03	0.03	0.03	2.23	2.23	2.23	2.23	0.07	0.07	0.07	0.07	0.00	0.00	0.00	0.00
Iran	0.10	0.10	0.10	0.10	1.18	1.35	1.35	1.35	0.12	0.14	0.14	0.14	0.00	0.00	0.00	0.00
Australia	0.51	0.60	0.47	0.47	2.48	2.34	2.40	2.40	1.25	1.40	1.13	1.13	0.00	0.00	-0.28	-19.67
European Union	0.25	0.28	0.26	0.26	1.35	1.44	1.49	1.49	0.34	0.40	0.39	0.39	0.00	0.00	-0.02	-3.75
Africa																
Burkina Faso	0.46	0.35	0.39	0.39	0.46	0.44	0.45	0.45	0.21	0.15	0.18	0.18	0.00	0.00	0.02	15.13
Mali	0.71	0.62	0.53	0.53	0.53	0.57	0.43	0.43	0.38	0.36	0.23	0.23	0.00	0.00	-0.13	-35.20
Cameroon	0.24	0.23	0.20	0.20	1.54	1.18	1.33	1.33	0.37	0.27	0.27	0.27	0.00	0.00	-0.01	-1.85
Cote d'Ivoire	0.40	0.36	0.29	0.29	0.44	0.44	0.51	0.51	0.17	0.16	0.15	0.15	0.00	0.00	-0.01	-5.70
Benin	0.51	0.54	0.51	0.51	0.73	0.74	0.75	0.75	0.37	0.40	0.38	0.38	0.00	0.00	-0.02	-4.28
Tanzania	0.47	0.44	0.44	0.44	0.44	0.35	0.40	0.40	0.21	0.15	0.17	0.17	0.00	0.00	0.02	14.47
Egypt	0.10	0.13	0.08	0.08	0.96	0.99	0.99	0.99	0.10	0.13	0.08	0.08	0.00	0.00	-0.05	-38.76
Nigeria	0.27	0.27	0.27	0.27	0.56	0.56	0.56	0.56	0.15	0.15	0.15	0.15	0.00	0.00	0.00	0.00
Uganda	0.06	0.07	0.07	0.07	1.51	1.48	1.20	1.20	0.08	0.10	0.08	0.08	0.00	0.00	-0.02	-18.75
Zimbabwe	0.24	0.24	0.24	0.24	0.34	0.34	0.35	0.35	0.08	0.08	0.09	0.09	0.00	0.00	0.00	3.66
Sudan	0.08	0.07	0.07	0.07	1.36	1.09	1.09	1.09	0.10	0.08	0.08	0.08	0.00	0.00	0.00	0.00
Mexico	0.13	0.13	0.07	0.07	2.25	2.70	2.68	2.68	0.30	0.34	0.19	0.19	0.00	0.00	-0.15	-43.24
Burma	0.18	0.19	0.19	0.19	1.24	1.24	1.25	1.25	0.23	0.24	0.23	0.23	0.00	0.00	-0.01	-2.12
Others	0.61	0.55	0.57	0.57	0.86	0.87	0.88	0.88	0.52	0.48	0.50	0.50	0.00	0.00	0.03	5.24

World and Selected Countries and Regions

Table 13 Peanut Area, Yield, and Production

Country / Region	Area (Million hectares)				Yield (Metric tons per hectare)				Production (Million metric tons)				Change in Production			
	2023/24	Prel.	2025/26 Proj.		2023/24	Prel.	2025/26 Proj.		2023/24	Prel.	2025/26 Proj.		From last month		From last year	
		2024/25	Feb	Mar		2024/25	Feb	Mar		2024/25	Feb	Mar	MMT	Percent	MMT	Percent
World	30.40	30.48	30.20	30.16	1.64	1.71	1.73	1.73	49.84	52.06	52.23	52.08	-0.15	-0.29	0.02	0.03
United States	0.63	0.71	0.77	0.77	4.23	4.17	4.22	4.22	2.67	2.94	3.26	3.26	0.00	0.00	0.31	10.67
Total Foreign	29.77	29.77	29.43	29.39	1.58	1.65	1.66	1.66	47.17	49.12	48.97	48.82	-0.15	-0.31	-0.30	-0.61
China	4.80	4.85	4.86	4.86	4.01	3.92	3.91	3.91	19.23	19.00	19.00	19.00	0.00	0.00	0.00	0.00
Africa																
Nigeria	4.43	4.40	4.39	4.39	1.12	1.16	1.19	1.19	4.97	5.09	5.24	5.24	0.00	0.00	0.16	3.07
Sudan	3.01	2.43	2.00	2.00	0.46	0.69	0.50	0.50	1.39	1.68	1.00	1.00	0.00	0.00	-0.68	-40.62
Senegal	0.83	0.78	0.87	0.87	1.27	1.02	1.32	1.32	1.06	0.80	1.15	1.15	0.00	0.00	0.35	44.47
Cameroon	0.50	0.50	0.50	0.50	1.40	1.40	1.40	1.40	0.70	0.70	0.70	0.70	0.00	0.00	0.00	0.00
Ghana	0.37	0.37	0.37	0.37	1.72	1.69	1.62	1.62	0.64	0.63	0.60	0.60	0.00	0.00	-0.03	-4.00
Chad	0.75	0.75	0.75	0.75	1.04	0.92	1.00	1.00	0.78	0.69	0.75	0.75	0.00	0.00	0.06	8.23
Malawi	0.40	0.40	0.40	0.40	0.88	0.88	0.88	0.88	0.35	0.35	0.35	0.35	0.00	0.00	0.00	0.00
Congo (Kinshasa)	0.51	0.52	0.52	0.52	0.97	0.93	0.93	0.93	0.50	0.48	0.48	0.48	0.00	0.00	0.00	0.00
Niger	1.02	1.03	1.03	1.03	0.55	0.65	0.63	0.63	0.56	0.67	0.65	0.65	0.00	0.00	-0.02	-3.56
Mali	0.50	0.50	0.50	0.50	0.92	1.00	0.92	0.92	0.46	0.50	0.46	0.46	0.00	0.00	-0.04	-8.45
Uganda	0.33	0.33	0.33	0.33	0.42	0.53	0.53	0.53	0.14	0.18	0.18	0.18	0.00	0.00	0.00	0.00
Burkina Faso	0.75	0.75	0.75	0.75	0.91	0.91	0.91	0.91	0.68	0.68	0.68	0.68	0.00	0.00	0.00	0.00
Guinea	0.90	0.88	0.88	0.88	1.11	1.14	1.14	1.14	1.00	1.00	1.00	1.00	0.00	0.00	0.00	0.00
Egypt	0.06	0.06	0.06	0.06	3.20	3.20	3.20	3.20	0.21	0.21	0.21	0.21	0.00	0.00	0.00	0.00
Central African Republic	0.20	0.23	0.23	0.23	2.97	2.44	2.44	2.44	0.59	0.55	0.55	0.55	0.00	0.00	0.00	0.00
South Africa	0.04	0.05	0.05	0.05	1.68	1.77	2.11	2.11	0.07	0.09	0.10	0.10	0.00	0.00	0.01	11.76
Mozambique	0.58	0.45	0.45	0.45	0.39	0.39	0.39	0.39	0.23	0.18	0.18	0.18	0.00	0.00	0.00	0.00
Cote d'Ivoire	0.17	0.17	0.17	0.17	1.45	1.45	1.45	1.45	0.24	0.24	0.24	0.24	0.00	0.00	0.00	0.00
Benin	0.24	0.22	0.22	0.22	0.74	1.00	1.00	1.00	0.18	0.22	0.22	0.22	0.00	0.00	0.00	-0.45
South Asia																
India	5.00	5.50	5.60	5.60	1.20	1.29	1.34	1.34	6.00	7.10	7.50	7.50	0.00	0.00	0.40	5.63
Pakistan	0.14	0.14	0.14	0.14	0.85	0.90	0.89	0.89	0.12	0.13	0.12	0.12	0.00	0.00	-0.01	-7.69
Southeast Asia																
Indonesia	0.52	0.50	0.49	0.49	1.69	1.66	1.65	1.65	0.88	0.83	0.81	0.81	0.00	0.00	-0.02	-2.41
Burma	1.07	1.08	1.08	1.08	1.59	1.63	1.63	1.63	1.70	1.75	1.76	1.76	0.00	0.00	0.01	0.57
Vietnam	0.15	0.14	0.14	0.14	2.66	2.66	2.66	2.66	0.39	0.38	0.38	0.38	0.00	0.00	0.00	0.00
Thailand	0.02	0.02	0.02	0.02	1.67	1.67	1.67	1.67	0.04	0.04	0.04	0.04	0.00	0.00	0.00	0.00
South America																
Argentina	0.43	0.53	0.45	0.41	3.43	3.40	3.33	3.29	1.48	1.81	1.50	1.35	-0.15	-10.00	-0.46	-25.41
Brazil	0.26	0.28	0.28	0.28	2.88	4.14	4.11	4.11	0.73	1.16	1.15	1.15	0.00	0.00	-0.01	-0.86
Mexico	0.05	0.05	0.05	0.05	1.98	1.70	1.75	1.75	0.09	0.09	0.08	0.08	0.00	0.00	0.00	-1.18
Others	1.75	1.87	1.87	1.87	1.02	1.03	1.02	1.02	1.78	1.92	1.91	1.91	0.00	0.00	-0.01	-0.47

Table 14 Sunflowerseed Area, Yield, and Production

Country / Region	Area (Million hectares)				Yield (Metric tons per hectare)				Production (Million metric tons)				Change in Production			
	Prel.		2025/26 Proj.		Prel.		2025/26 Proj.		Prel.		2025/26 Proj.		From last month		From last year	
	2023/24	2024/25	Feb	Mar	2023/24	2024/25	Feb	Mar	2023/24	2024/25	Feb	Mar	MMT	Percent	MMT	Percent
World	27.80	28.32	29.55	29.84	2.01	1.86	1.76	1.81	55.93	52.81	52.06	54.12	2.06	3.96	1.32	2.49
United States	0.51	0.28	0.50	0.50	2.00	1.87	2.09	2.09	1.02	0.52	1.05	1.05	0.00	0.00	0.54	103.28
Total Foreign	27.29	28.05	29.04	29.33	2.01	1.86	1.76	1.81	54.91	52.29	51.00	53.07	2.06	4.05	0.78	1.49
Former Soviet Union - 12																
Russia	9.30	9.60	10.30	10.30	1.84	1.76	1.65	1.65	17.10	16.90	17.00	17.00	0.00	0.00	0.10	0.59
Ukraine	6.40	6.00	5.60	5.60	2.42	2.17	1.88	1.96	15.50	13.00	10.50	11.00	0.50	4.76	-2.00	-15.38
Kazakhstan	1.13	1.26	1.75	1.77	1.10	1.46	1.37	1.39	1.24	1.83	2.40	2.46	0.06	2.67	0.63	34.35
European Union	4.69	4.84	4.59	4.59	2.14	1.74	1.87	1.87	10.05	8.44	8.58	8.58	0.00	0.00	0.14	1.65
South America																
Argentina	1.84	2.40	2.65	3.00	2.11	2.33	2.08	2.33	3.90	5.59	5.50	7.00	1.50	27.27	1.41	25.18
Uruguay	0.00	0.01	0.01	0.01	1.25	1.86	1.20	1.20	0.01	0.01	0.01	0.01	0.00	0.00	0.00	-7.69
Bolivia	0.22	0.25	0.25	0.25	1.40	1.36	1.40	1.40	0.30	0.34	0.35	0.35	0.00	0.00	0.01	2.94
Brazil	0.06	0.06	0.07	0.07	1.18	1.61	1.54	1.54	0.07	0.10	0.10	0.10	0.00	0.00	0.00	0.00
Paraguay	0.02	0.03	0.03	0.03	1.63	1.60	1.60	1.60	0.04	0.04	0.04	0.04	0.00	0.00	0.00	0.00
China	0.70	0.60	0.72	0.72	2.83	2.92	2.92	2.92	1.98	1.75	2.10	2.10	0.00	0.00	0.35	20.00
South Asia																
India	0.15	0.18	0.18	0.18	0.75	0.63	0.63	0.63	0.11	0.11	0.11	0.11	0.00	0.00	0.00	0.00
Pakistan	0.08	0.07	0.07	0.07	1.35	1.32	1.32	1.32	0.11	0.09	0.09	0.09	0.00	0.00	0.00	0.00
Middle East																
Turkey	0.70	0.69	0.76	0.76	2.21	1.96	1.80	1.80	1.55	1.35	1.37	1.37	0.00	0.00	0.02	1.48
Iran	0.04	0.04	0.04	0.04	1.05	1.07	1.07	1.07	0.04	0.05	0.05	0.05	0.00	0.00	0.00	0.00
Israel	0.00	0.00	0.00	0.00	2.00	4.00	4.00	4.00	0.00	0.00	0.00	0.00	0.00	0.00	0.00	0.00
Africa																
Egypt	0.02	0.02	0.02	0.02	2.50	2.50	2.50	2.50	0.05	0.05	0.05	0.05	0.00	0.00	0.00	0.00
Morocco	0.02	0.02	0.02	0.02	1.27	1.17	1.17	1.17	0.03	0.03	0.03	0.03	0.00	0.00	0.00	0.00
South Africa	0.53	0.56	0.56	0.56	1.19	1.27	1.29	1.29	0.63	0.71	0.72	0.72	0.00	0.00	0.01	1.69
Burma	0.60	0.60	0.60	0.60	0.65	0.65	0.65	0.65	0.39	0.39	0.39	0.39	0.00	0.00	0.00	0.00
Canada	0.04	0.02	0.03	0.03	2.30	2.13	2.38	2.38	0.09	0.05	0.07	0.07	0.00	0.00	0.02	35.29
Australia	0.02	0.02	0.02	0.02	1.52	1.59	1.50	1.50	0.03	0.04	0.03	0.03	0.00	0.00	0.00	-5.71
Others	0.73	0.78	0.78	0.70	2.33	1.82	1.95	2.18	1.69	1.42	1.52	1.52	0.00	0.00	0.10	6.82

World and Selected Countries and Regions

Table 15 Rapeseed Area, Yield, and Production

Country / Region	Area (Million hectares)				Yield (Metric tons per hectare)				Production (Million metric tons)				Change in Production						
	2023/24	Prel.		2025/26 Proj.		2023/24	Prel.		2025/26 Proj.		2023/24	Prel.		2025/26 Proj.		From last month		From last year	
		2024/25	Feb	Mar	2024/25		Feb	Mar	2024/25	Feb		Mar	MMT	Percent	MMT	Percent			
World	42.98	42.48	43.81	43.84	2.09	2.02	2.17	2.18	89.97	86.00	95.02	95.50	0.48	0.51	9.50	11.05			
United States	0.94	1.11	0.94	0.94	2.01	2.01	2.26	2.26	1.90	2.22	2.13	2.13	0.00	0.00	-0.09	-4.23			
Total Foreign	42.04	41.37	42.87	42.90	2.10	2.02	2.17	2.18	88.08	83.78	92.90	93.38	0.48	0.52	9.60	11.46			
European Union	6.26	5.71	6.09	6.09	3.26	2.94	3.33	3.33	20.43	16.83	20.25	20.25	0.00	0.00	3.42	20.31			
United Kingdom	0.39	0.29	0.24	0.24	3.11	2.81	3.75	3.75	1.22	0.82	0.90	0.90	0.00	0.00	0.08	9.22			
Switzerland	0.03	0.03	0.03	0.03	3.52	3.52	3.52	3.52	0.09	0.09	0.09	0.09	0.00	0.00	0.00	0.00			
Canada	8.86	8.85	8.70	8.70	2.20	2.17	2.53	2.53	19.46	19.24	22.00	22.00	0.00	0.00	2.76	14.35			
China	7.40	7.40	7.50	7.50	2.14	2.14	2.13	2.13	15.80	15.80	16.00	16.00	0.00	0.00	0.20	1.27			
South Asia																			
India	9.25	8.90	9.25	9.25	1.25	1.29	1.30	1.30	11.60	11.52	12.00	12.00	0.00	0.00	0.48	4.17			
Pakistan	0.38	0.40	0.44	0.44	1.28	1.28	1.28	1.28	0.49	0.51	0.57	0.57	0.00	0.00	0.06	10.78			
Bangladesh	1.10	1.04	1.10	1.10	1.30	1.30	1.32	1.32	1.43	1.35	1.45	1.45	0.00	0.00	0.10	7.41			
Former Soviet Union - 12																			
Russia	2.05	2.65	2.90	2.90	2.05	1.75	1.93	1.93	4.20	4.65	5.60	5.60	0.00	0.00	0.95	20.43			
Ukraine	1.60	1.35	1.40	1.35	2.97	2.81	2.57	2.59	4.75	3.80	3.60	3.50	-0.10	-2.78	-0.30	-7.89			
Belarus	0.40	0.48	0.45	0.45	2.25	2.25	2.11	2.11	0.90	1.08	0.95	0.95	0.00	0.00	-0.13	-12.04			
Kazakhstan	0.09	0.15	0.33	0.32	1.32	1.92	1.54	1.95	0.12	0.29	0.50	0.63	0.13	26.00	0.34	120.28			
Australia	3.51	3.44	3.60	3.70	1.73	1.86	2.00	2.07	6.05	6.40	7.20	7.68	0.48	6.67	1.28	20.08			
South America																			
Chile	0.03	0.04	0.04	0.04	4.39	3.86	4.00	4.00	0.12	0.14	0.14	0.14	0.00	0.00	0.01	3.70			
Paraguay	0.07	0.08	0.08	0.08	1.50	1.53	1.56	1.56	0.11	0.12	0.13	0.13	0.00	0.00	0.01	8.70			
Ethiopia	0.03	0.03	0.03	0.03	1.80	1.80	1.80	1.80	0.05	0.05	0.05	0.05	0.00	0.00	0.00	0.00			
Others	0.60	0.55	0.71	0.70	2.11	2.01	2.09	2.09	1.27	1.11	1.49	1.46	-0.03	-2.02	0.35	31.00			

World and Selected Countries and Regions

Table 16 Copra, Palm Kernel, and Palm Oil Production

Country / Region	Production (Million metric tons)				Change in Production			
	2023/24	Prel.	2025/26 Proj.		From last month		From last year	
		2024/25	Feb	Mar	MMT	Percent	MMT	Percent
Oilseed, Copra								
Philippines	2.90	2.56	2.60	2.60	0.00	0.00	0.04	1.56
Indonesia	1.69	1.61	1.64	1.64	0.00	0.00	0.03	1.86
India	0.94	0.94	0.94	0.94	0.00	0.00	0.00	0.00
Vietnam	0.29	0.29	0.29	0.29	0.00	0.00	0.00	0.00
Papua New Guinea	0.09	0.10	0.10	0.10	0.00	0.00	0.00	0.00
Sri Lanka	0.07	0.07	0.07	0.07	0.00	0.00	0.00	0.00
Thailand	0.07	0.07	0.07	0.07	0.00	0.00	0.00	0.00
Mexico	0.05	0.05	0.05	0.05	0.00	0.00	0.00	0.00
Cote d'Ivoire	0.03	0.03	0.03	0.03	0.00	0.00	0.00	0.00
Malaysia	0.03	0.03	0.03	0.03	0.00	0.00	0.00	0.00
World	6.20	5.79	5.86	5.86	0.00	0.00	0.08	1.38
Oilseed, Palm Kernel								
Indonesia	11.00	11.90	12.30	12.30	0.00	0.00	0.40	3.36
Malaysia	4.83	4.56	4.88	4.88	0.00	0.00	0.32	7.02
Nigeria	1.10	1.10	1.10	1.10	0.00	0.00	0.00	0.00
Thailand	0.85	0.87	0.89	0.89	0.00	0.00	0.01	1.15
Colombia	0.33	0.33	0.34	0.34	0.00	0.00	0.01	3.03
Papua New Guinea	0.20	0.20	0.18	0.18	0.00	0.00	-0.02	-10.00
Guatemala	0.18	0.19	0.19	0.19	0.00	0.00	0.01	5.56
Brazil	0.16	0.16	0.17	0.17	0.00	0.00	0.00	0.00
Honduras	0.16	0.16	0.16	0.16	0.00	0.00	0.00	0.00
Cameroon	0.15	0.15	0.15	0.15	0.00	0.00	0.00	0.00
World	19.61	20.29	21.01	21.01	0.00	0.00	0.72	3.55
Oil, Palm								
Indonesia	43.00	45.50	46.70	46.70	0.00	0.00	1.20	2.64
Malaysia	19.71	19.38	20.20	20.20	0.00	0.00	0.82	4.23
Thailand	3.27	3.33	3.38	3.38	0.00	0.00	0.05	1.50
Colombia	1.88	1.90	2.00	2.00	0.00	0.00	0.10	5.26
Nigeria	1.50	1.50	1.50	1.50	0.00	0.00	0.00	0.00
Guatemala	0.89	0.99	1.00	1.00	0.00	0.00	0.01	1.01
Papua New Guinea	0.82	0.83	0.83	0.83	0.00	0.00	0.00	0.00
Cote d'Ivoire	0.62	0.63	0.63	0.63	0.00	0.00	0.01	1.61
Brazil	0.59	0.60	0.65	0.65	0.00	0.00	0.05	8.33
Honduras	0.65	0.56	0.62	0.62	0.00	0.00	0.06	10.71
World	76.09	78.41	80.72	80.72	0.00	0.00	2.32	2.96

World and Selected Countries and Regions

Table 17 Cotton Area, Yield, and Production

Country / Region	Area (Million hectares)				Yield (Kilograms per hectare)				Production (Million 480 lb. bales)				Change in Production			
	2023/24	Prel.	2025/26 Proj.		2023/24	Prel.	2025/26 Proj.		2023/24	Prel.	2025/26 Proj.		From last month		From last year	
		2024/25	Feb	Mar		2024/25	Feb	Mar		2024/25	Feb	Mar	MBales	Percent	MBales	Percent
World	30.90	30.04	29.48	29.51	791	859	885	893	112.23	118.54	119.86	120.99	1.14	0.95	2.45	2.07
United States	2.61	3.16	3.16	3.16	1,008	993	959	959	12.07	14.41	13.92	13.92	0.00	0.00	-0.50	-3.43
Total Foreign	28.29	26.88	26.32	26.35	771	843	876	885	100.17	104.13	105.94	107.08	1.14	1.07	2.94	2.83
South Asia																
India	12.69	11.48	11.20	11.20	436	440	457	457	25.40	23.20	23.50	23.50	0.00	0.00	0.30	1.29
Pakistan	2.40	2.00	1.95	1.95	635	544	558	558	7.00	5.00	5.00	5.00	0.00	0.00	0.00	0.00
China	2.85	2.90	3.05	3.05	2,089	2,402	2,499	2,534	27.35	32.00	35.00	35.50	0.50	1.43	3.50	10.94
South America																
Brazil	1.66	1.95	2.10	2.17	1,911	1,903	1,944	1,957	14.57	17.00	18.75	19.50	0.75	4.00	2.50	14.71
Argentina	0.62	0.62	0.50	0.46	578	501	599	596	1.65	1.43	1.38	1.26	-0.12	-8.36	-0.17	-11.89
Paraguay	0.06	0.07	0.06	0.06	812	837	907	907	0.21	0.25	0.25	0.25	0.00	0.00	0.00	0.00
Africa																
Burkina Faso	0.46	0.35	0.39	0.39	361	345	355	355	0.77	0.55	0.64	0.64	0.00	0.00	0.09	15.45
Mali	0.71	0.62	0.53	0.53	407	442	334	334	1.33	1.27	0.82	0.82	0.00	0.00	-0.45	-35.18
Cote d'Ivoire	0.40	0.36	0.29	0.29	358	360	420	420	0.65	0.59	0.56	0.56	0.00	0.00	-0.03	-5.08
Benin	0.51	0.54	0.51	0.51	482	487	491	491	1.13	1.20	1.15	1.15	0.00	0.00	-0.05	-4.17
Egypt	0.10	0.13	0.08	0.08	686	712	708	708	0.32	0.43	0.26	0.26	0.00	0.00	-0.17	-38.82
Cameroon	0.24	0.23	0.20	0.20	671	513	577	577	0.74	0.54	0.53	0.53	0.00	0.00	-0.01	-1.85
Tanzania	0.47	0.44	0.44	0.44	220	173	198	198	0.47	0.35	0.40	0.40	0.00	0.00	0.05	14.29
Nigeria	0.27	0.27	0.27	0.27	282	282	282	282	0.35	0.35	0.35	0.35	0.00	0.00	0.00	0.00
Zimbabwe	0.24	0.24	0.24	0.24	195	195	204	204	0.22	0.22	0.23	0.23	0.00	0.00	0.01	4.65
Ethiopia	0.06	0.06	0.06	0.06	713	713	713	713	0.18	0.18	0.18	0.18	0.00	0.00	0.00	0.00
Former Soviet Union - 12																
Uzbekistan	1.03	1.00	0.93	0.93	613	653	597	597	2.90	3.00	2.55	2.55	0.00	0.00	-0.45	-15.00
Turkmenistan	0.50	0.50	0.52	0.52	348	348	356	356	0.80	0.80	0.85	0.85	0.00	0.00	0.05	6.25
Tajikistan	0.17	0.18	0.18	0.18	627	605	641	641	0.48	0.50	0.53	0.53	0.00	0.00	0.03	6.00
Kazakhstan	0.12	0.11	0.14	0.14	558	544	505	505	0.30	0.27	0.33	0.33	0.00	0.00	0.06	22.64
Middle East																
Turkey	0.44	0.47	0.40	0.40	1,580	1,850	1,654	1,654	3.19	3.95	3.00	3.00	0.00	0.00	-0.95	-24.05
Syria	0.03	0.03	0.03	0.03	1,161	1,161	1,161	1,161	0.16	0.16	0.16	0.16	0.00	0.00	0.00	0.00
Iran	0.10	0.10	0.10	0.10	762	871	871	871	0.35	0.40	0.40	0.40	0.00	0.00	0.00	0.00
Australia	0.51	0.60	0.47	0.47	2,156	2,032	2,085	2,085	5.00	5.60	4.50	4.50	0.00	0.00	-1.10	-19.64
Mexico	0.13	0.13	0.07	0.07	1,435	1,719	1,709	1,709	0.87	1.00	0.57	0.57	0.00	0.00	-0.43	-43.22
Burma	0.18	0.19	0.19	0.19	654	654	659	659	0.55	0.57	0.56	0.56	0.00	0.00	-0.01	-1.93
Others	1.37	1.34	1.43	1.43	518	543	534	534	3.26	3.35	3.52	3.52	0.00	0.00	0.17	5.08

World and Selected Countries and Regions

TABLE 18

The table below presents a record of the March projection and the final estimate. Using world wheat production as an example, the "root mean square error" means that chances are 2 out of 3 that the current forecast will not be above or below the final estimate by more than 0.5 percent. Chances are 9 out of 10 (90% confidence level) that the difference will not exceed 0.9 percent. The average difference between the March projection and the final estimate is 2.4 million tons, ranging from 0 million to 8 million tons. The March projection has been below the estimate 33 times and above 11 times.

RELIABILITY OF PRODUCTION PROJECTIONS 1/

COMMODITY AND REGION	Root mean square error	90 percent confidence interval	Difference between forecast and final estimate				
			Average	Smallest	Largest	Years	
						Below final	Above final
	Percent		---Million metric tons---				
WHEAT							
World	0.5	0.9	2.4	0.0	8.0	33	11
U.S.	0.2	0.3	0.1	0.0	0.3	20	12
Foreign	0.6	1.0	2.4	0.1	8.0	33	11
COARSE GRAINS 2/							
World	1.2	2.0	10.5	0.5	35.1	36	8
U.S.	0.2	0.3	0.2	0.0	1.8	18	12
Foreign	1.6	2.8	10.5	0.5	35.1	36	8
RICE (Milled)							
World	1.3	2.2	3.6	0.2	13.8	33	11
U.S.	1.2	2.0	0.0	0.0	0.2	11	6
Foreign	1.3	2.2	3.6	0.1	13.8	33	11
SOYBEANS							
World	2.1	3.6	3.4	0.1	12.4	23	21
U.S.	1.3	2.2	0.7	0.0	3.2	19	18
Foreign	3.5	5.9	3.3	0.1	12.6	24	20
COTTON			---Million 480-lb. bales---				
World	1.8	3.0	1.3	0.0	5.2	26	16
U.S.	0.9	1.6	0.1	0.0	0.3	14	28
Foreign	2.1	3.6	1.3	0.0	5.3	26	17
UNITED STATES			-----Million bushels-----				
<i>CORN</i>	0.2	0.3	7	0	72	2	7
<i>SORGHUM</i>	0.1	0.2	0	0	4	0	2
<i>BARLEY</i>	0.9	1.6	1	0	11	22	4
<i>OATS</i>	0.4	0.6	0	0	2	5	4

1/ Marketing years 1981/82 through 2024/25 for grains, soybeans, and cotton. Final for grains, soybeans, and cotton is defined as the first November estimate following the marketing year for 1981/82 through 2023/24, and for 2024/25 the last month's estimate.

2/ Includes corn, sorghum, barley, oats, rye, millet, and mixed grain