

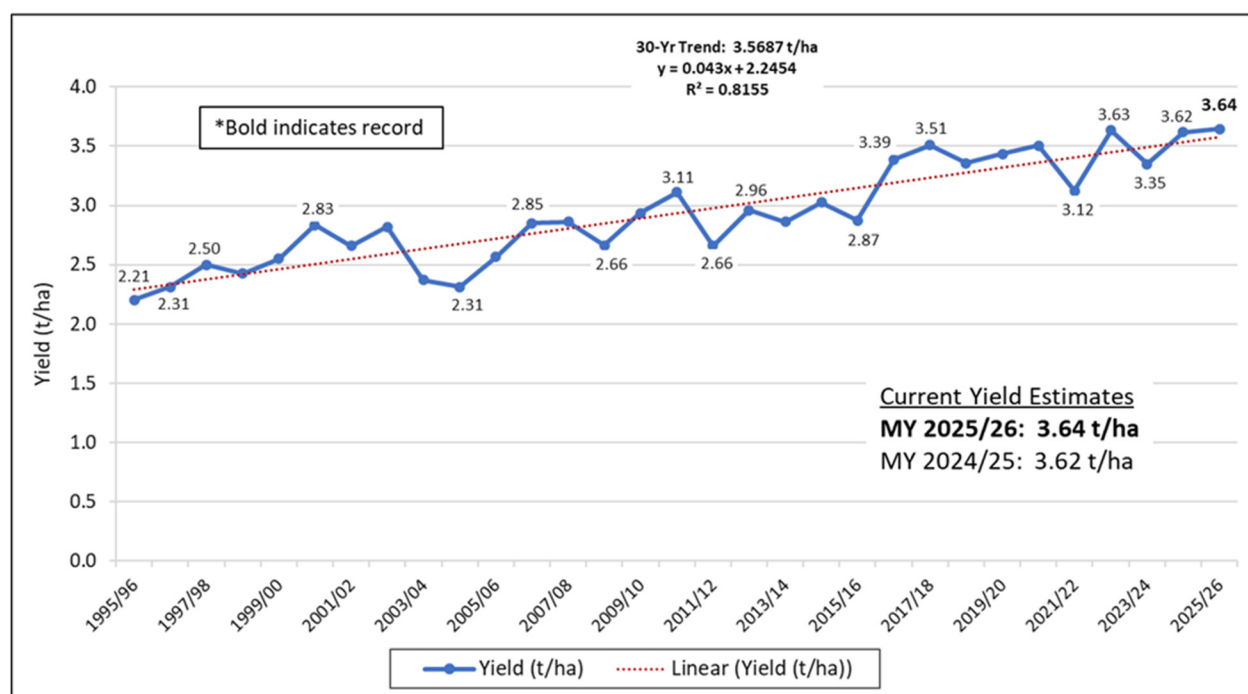
World Agricultural Production

Circular Series
WAP 02-26
February 2026

Brazil Soybeans: Record Area and Yield Push Production Higher

USDA estimates Brazil soybean production for marketing year (MY) 2025/26 at a record 180.0 million metric tons, up 1 percent from last month, 5 percent from last year and 19 percent above the 5-year average. Harvested area is estimated at a record 49.4 million hectares, up 1 percent from last month, 4 percent from last year and 12 percent above the 5-year average. Yield is estimated at a record 3.64 tons per hectare (t/ha), up 1 percent from last month and last year, and 6 percent above the 5-year average.

Brazil Soybeans: 30-Year Yield Time Series

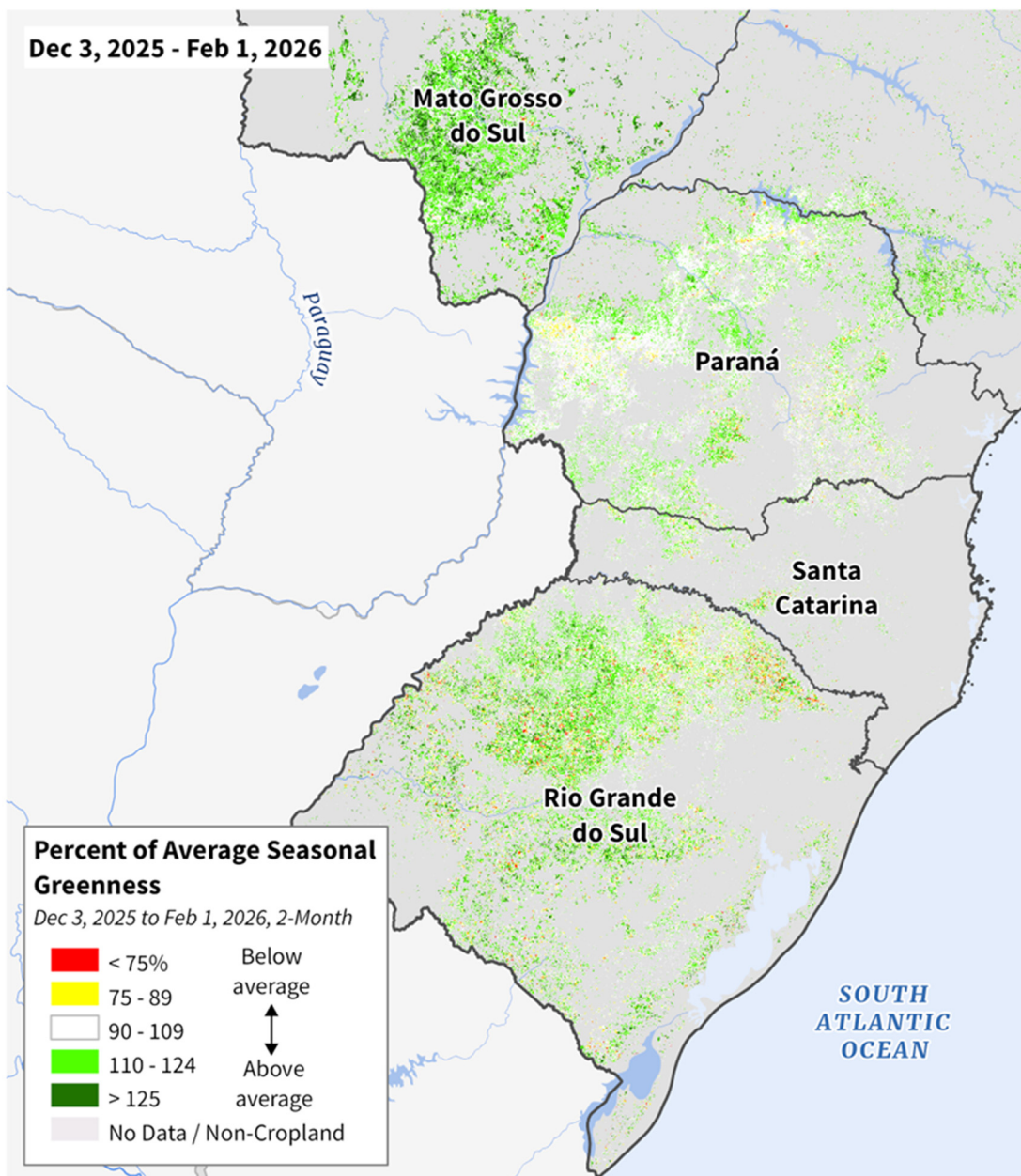


Source: USDA PSD Online

Prospects for Brazil’s soybean crop remain strong, as most areas enter harvest. Reports of positive crop conditions have been nearly ubiquitous, and early harvest reports indicate above-average yields in most states. Additionally, recent state-level reporting indicates higher area than previous estimates.

Approved by the World Agricultural Outlook Board

Brazil: Percent Average Seasonal Greenness

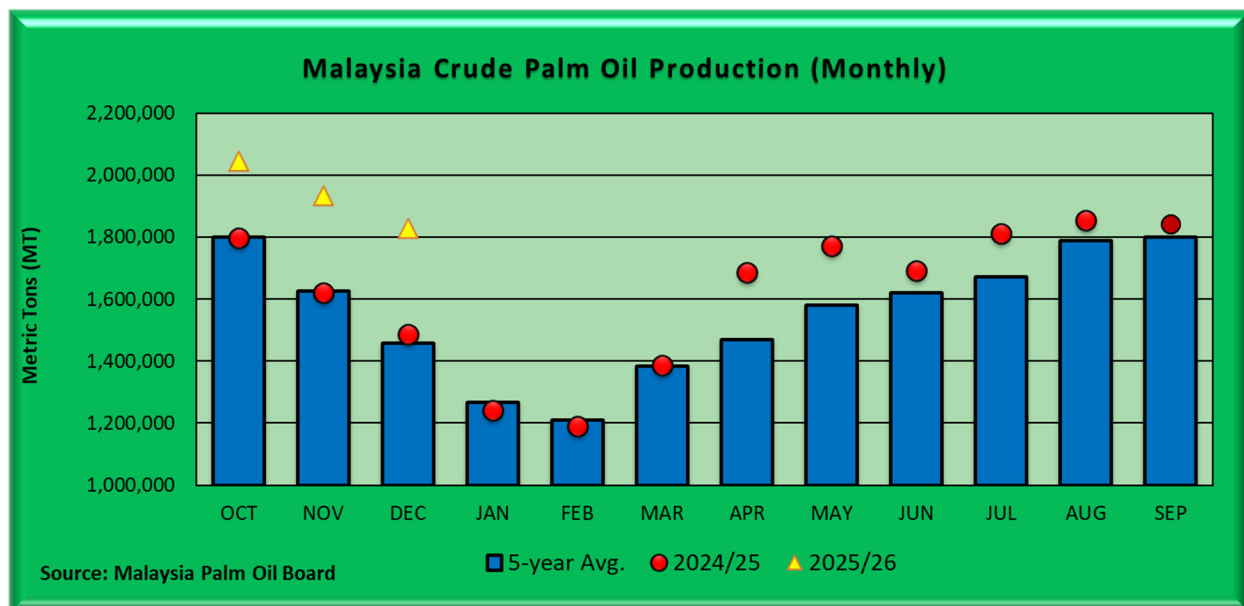


Sources: USDA NASA GLAM 8-Day MODIS Imagery; GDA 2025 Soybean Classification

Conditions are notably improved, year-to-year, in Mato Grosso do Sul and Rio Grande do Sul, which have experienced drier conditions and lower yields in recent years. This season, however, abundant rainfall promoted strong crop vigor. Satellite-derived Percent of Average Seasonal Greenness (PASG) measurements indicated above-average crop conditions in virtually all of the major soybean-growing states through peak season. Cropping in Rio Grande do Sul lags that of the other states by several weeks, however PASG indicates strong crop health there as soybeans progress through reproduction and towards maturity. *(For more information, please contact Aaron.Mulhollen@usda.gov.)*

Malaysia Palm Oil: Estimated Production Increased Due to Favorable Weather

USDA estimates Malaysia marketing year (MY) 2025/26 palm oil production at 20.2 million metric tons (mmt), up 3 percent from last month, and 4 percent from last year. Harvested area is estimated at 5.6 million hectares, unchanged from both last month and last year. Yield is estimated at 3.61 metric tons per hectare, up 3 percent from last month, and 4 percent from last year.

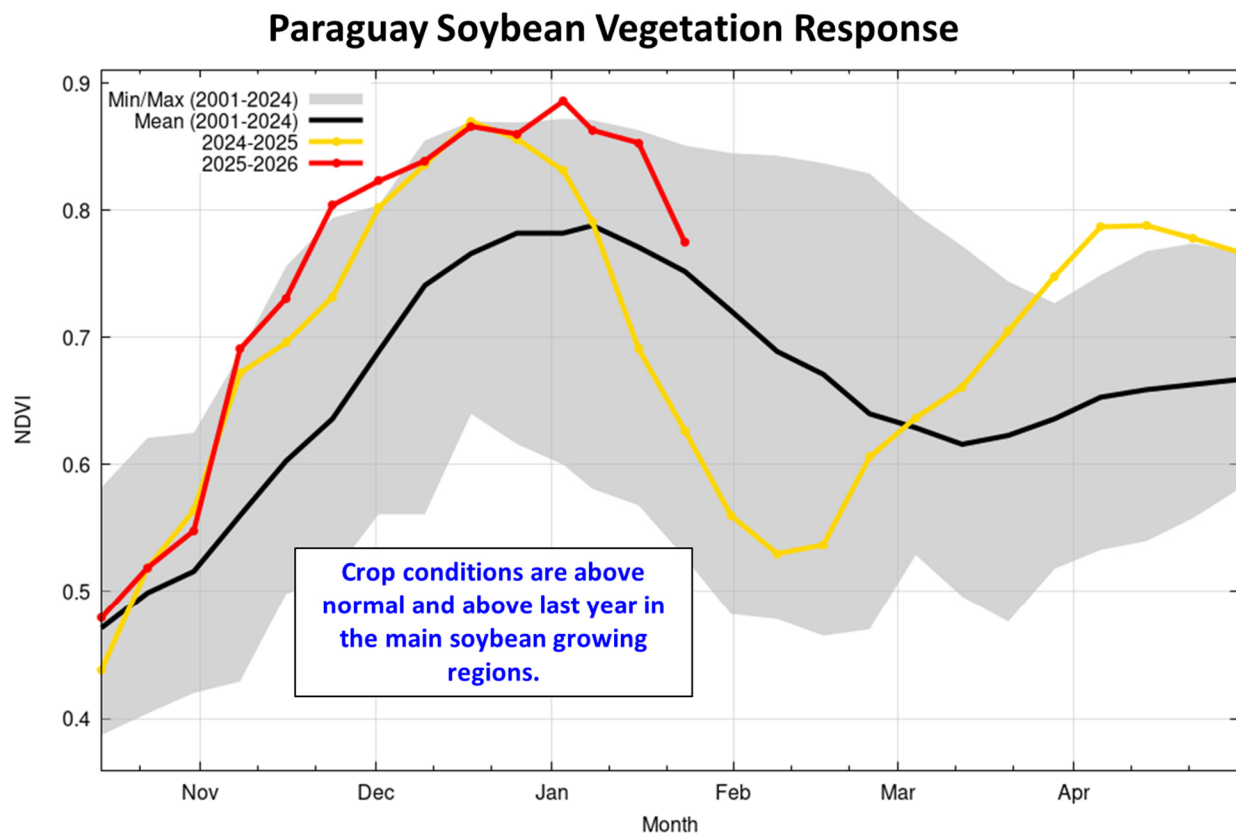


Palm oil is a highly water intensive crop. The monthly water requirement to achieve yield potential is between 150 millimeters and 200 millimeters. Due to the characteristics of palm oil, there is a delayed physiological response to water uptake, where rainfall in one period can prompt a vegetative response in later months. This delayed period is called the time lag effect.

Since January of 2025, monthly rainfall accumulations have met or exceeded the water requirements threshold in the main palm oil producing states. As a result, monthly crude palm oil production for MY 2025/26, which begins in October 2025 and ends in September of the following year, has exceeded expectations. The latest January report from the Malaysia Palm Oil Board (covering October through December 2025) indicates crude palm oil production year-to-date at 5.81 mmt, up 18 percent from the same period last year and 19 percent from the 5-year average. *(For additional information, please contact Justin.Jenkins@usda.gov.)*

Paraguay Soybeans: Favorable Weather Boosts Yield

USDA estimates Paraguay soybean production for marketing year 2025/26 at 11.5 million metric tons, up 5 percent from last month and 13 percent from last year. Yield is estimated at 3.03 tons per hectare, up 5 percent from last month and 11 percent from last year. Harvested area is estimated at 3.8 million hectares, unchanged from last month and up 1 percent from last year.



Source: USDA/NASA GLAM MODIS Terra 8-day NDVI;
UMD-GLAD South America 2019-2023 Soybean Crop Mask

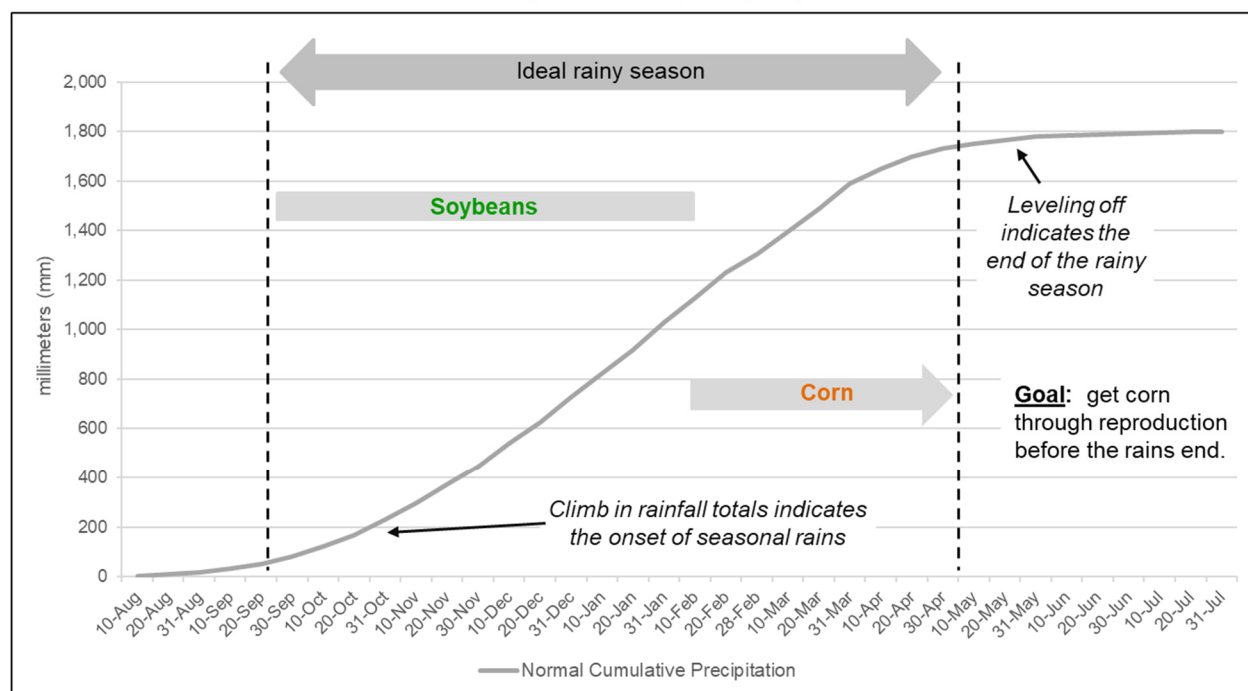
In Paraguay, soybeans are generally planted from October through December. This year, planting occurred earlier than usual, resulting in accelerated crop development. The satellite-derived Normalized Difference Vegetation Index (NDVI) indicates crop conditions across the primary growing regions are above average and better than last year. Favorable seasonal rainfall has supported optimal crop growth, suggesting yields may exceed initial expectations. *(For more information, please contact Iliana.Mladenova@usda.gov.)*

Brazil Corn: Production Unchanged on Normal Cropping Cycle

USDA estimates Brazil corn production for marketing year (MY) 2025/26 at 131.0 million metric tons, unchanged from last month, but down 4 percent from last year's record crop, and yet 10 percent above the 5-year average. Harvested area is estimated at a record 22.6 million hectares, unchanged from last month, but up 1 percent from last year and 5 percent above the 5-year average. Yield is estimated at 5.80 tons per hectare, unchanged from last month, but down 5 percent from last year on a return to normal weather patterns. Corn yield is estimated to be 6 percent above the 5-year average.

Soybean Harvest - Corn Planting Cycle and the Rainy Season

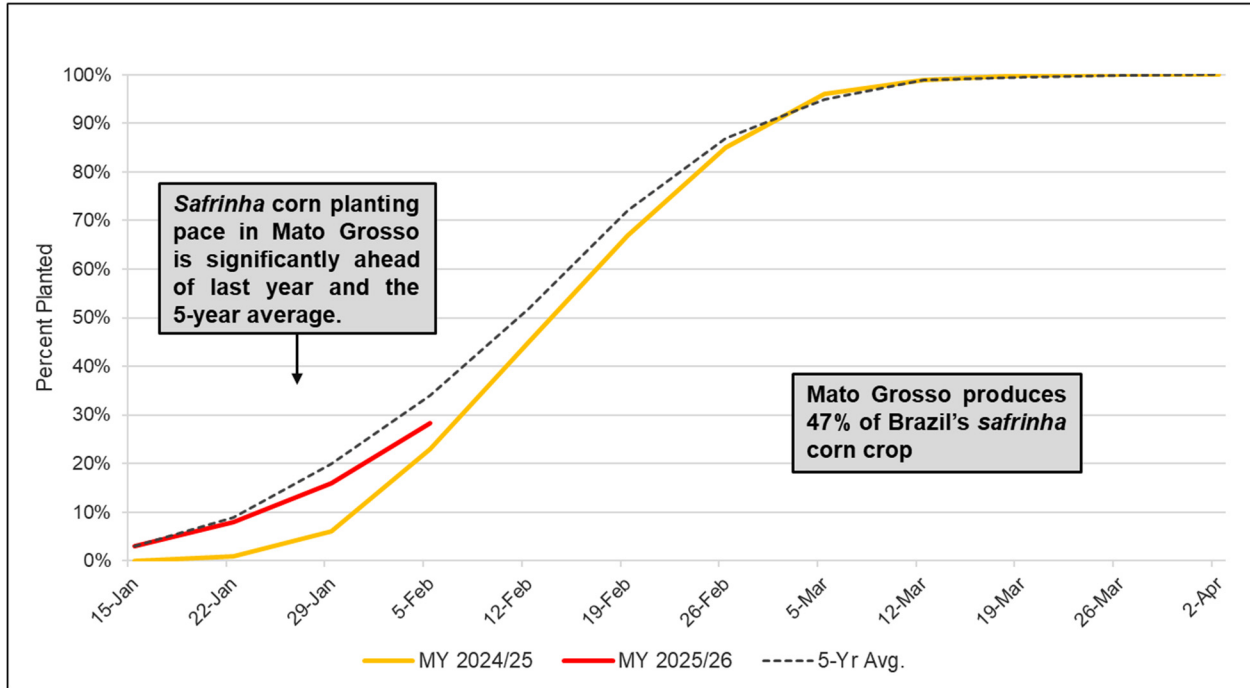
Mid-September through Early May



Source: UCSB CHIRPS v2 Precipitation Data

Brazil's corn production largely reflects its *safrinha* crop, which represents over 75 percent of annual production. *Safrinha* corn is grown primarily in the Central-West states of Mato Grosso, Mato Grosso do Sul, and Goiás, and the southern state of Paraná, representing 86 percent of *safrinha* corn production. Planting for *safrinha* corn begins after soybean harvest, preferably in late-January through the middle of February. This soybean-harvest to corn-planting cycle allows for adequate exposure for the corn crop to the annual rainy season, which normally runs from mid-September through the end of April.

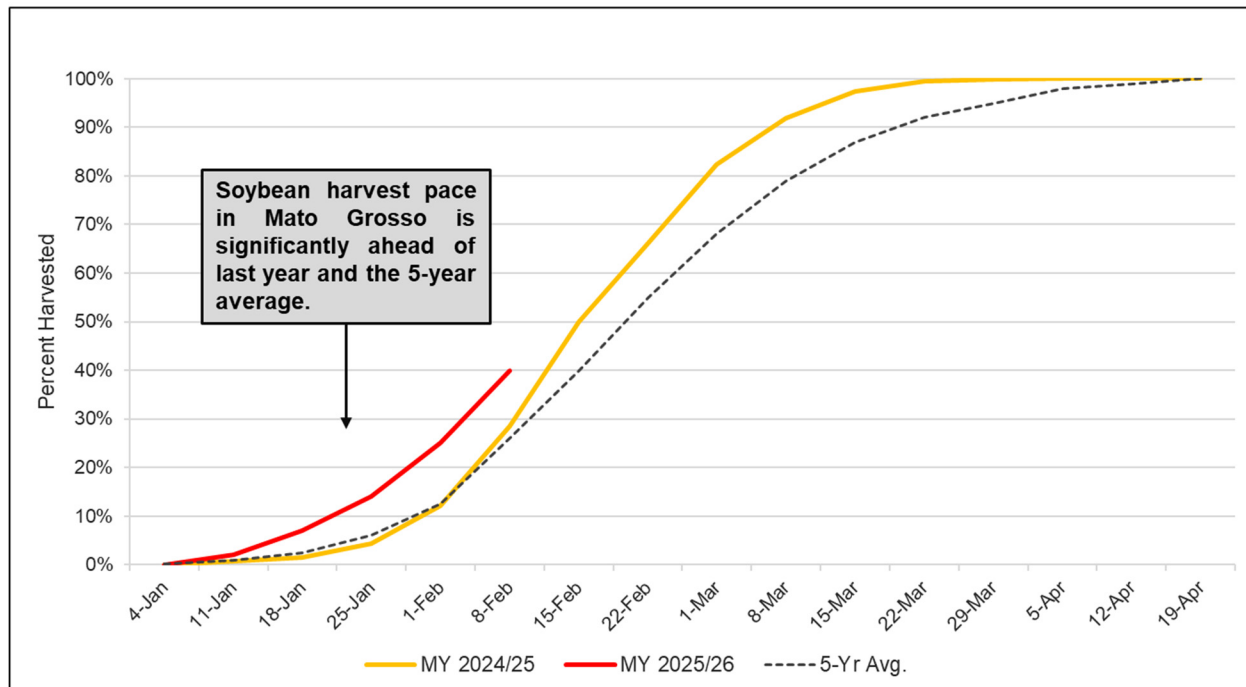
Mato Grosso *Safrinha* Corn Planting Progress



Source: Mato Grosso Institute for Agricultural Economics (IMEA)

Soybean planting or harvest delays in the Central-West can delay *safrinha* corn planting resulting in a compressed season and potentially lower yields. In an ideal scenario, corn will have adequate time to progress through reproduction before the end of the rainy season near the beginning of May. Corn planting in Mato Grosso was substantially delayed last season, though the rainy season extended unusually through much of May, leading to a bumper crop. Corn planting in the state lags the average again this season, at 28 percent complete at the beginning of February versus 36 percent on average. For comparison, *safrinha* corn was only 23 percent planted at this point last season.

Mato Grosso Soybean Harvest Progress

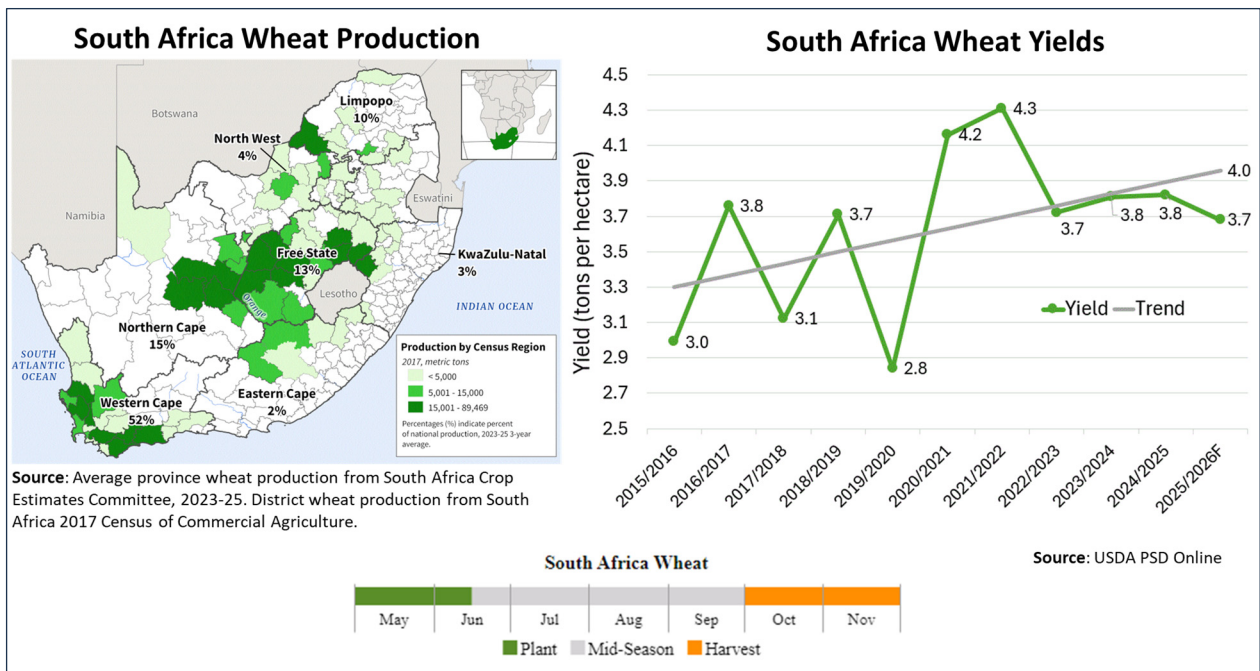


Source: Mato Grosso Institute for Agricultural Economics (IMEA)

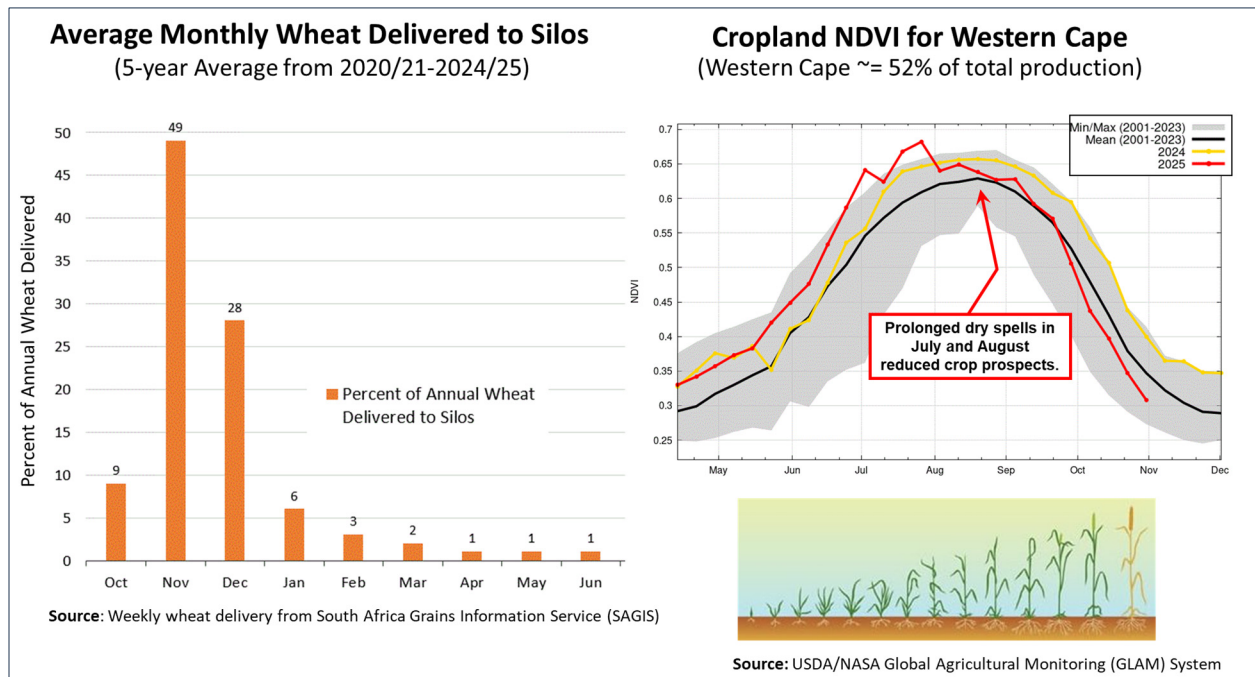
The soybean harvest pace in Mato Grosso this season has been rapid, however. According to the Mato Grosso Institute for Agricultural Economics (IMEA), the soybean harvest is 40 percent complete, well ahead of last year (29 percent) and the 5-year average (26 percent). With this harvest pace, adequate area is available for corn planting, which is expected to accelerate in the coming weeks and allow for positive crop development through the normal rainy season. *(For more information, please contact Aaron.Mulhollen@usda.gov.)*

South Africa Wheat: Mid-season Dry Spells Reduce Production Prospects

USDA estimates South Africa wheat production for marketing year (MY) 2025/26 at 1.9 million metric tons, down 5 percent from last month, 2 percent from last year and 9 percent below the 5-year average. Harvested area is estimated at 517,000 hectares, up 2 percent from last year, but down 2 percent from the 5-year average. Yield is estimated at 3.68 tons per hectare, down 5 percent from last month, 4 percent from last year, and 7 percent below the 5-year average. Crop production prospects were reduced because of two consecutive mid-season dry spells in the Western Cape province.



South Africa wheat yields tend to be above average when the Western Cape receives favorable rains during the growing season from May through early September. Over 50 percent of South Africa’s rainfed wheat production is grown in Western Cape where favorable mid-season rains during July and August are critical for normal grain development and achieving average yields.

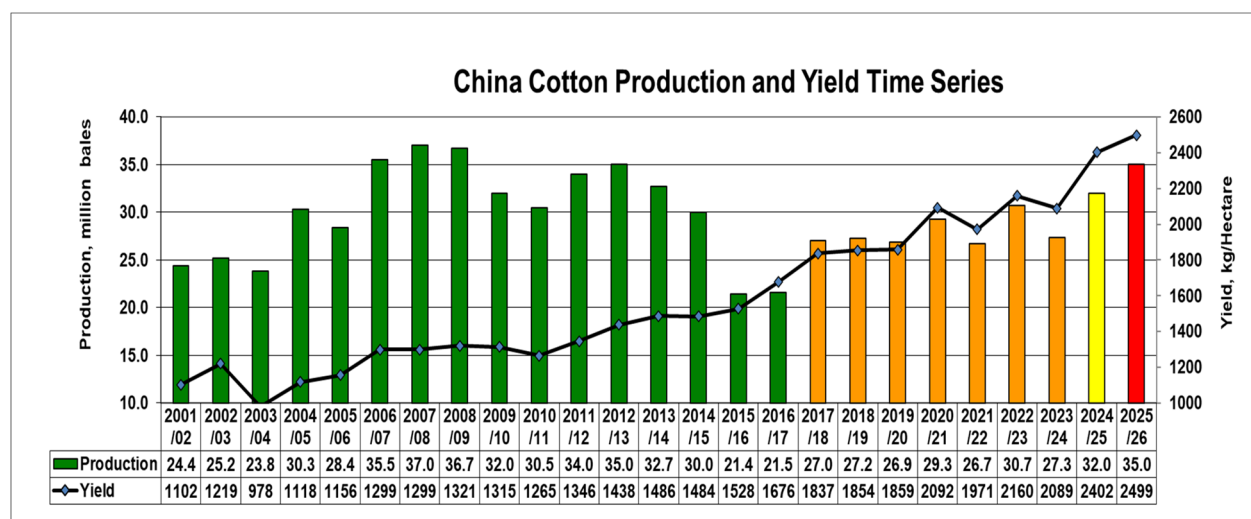


Cropland Normalized Difference Vegetation Index (NDVI) measurements from MODIS satellite imagery rapidly dropped during July and August in response to two prolonged dry spells that reduced vegetation biomass and correspondingly indicated a below-average harvest. Harvest

started in late September and South Africa Grains Information Service (SAGIS) reported nearly 91 percent of the crop was harvested and delivered to silos by the end of January. *(For more information, contact Curt.Reynolds@usda.gov)*

China Cotton: Production Increased Due to Record Yield

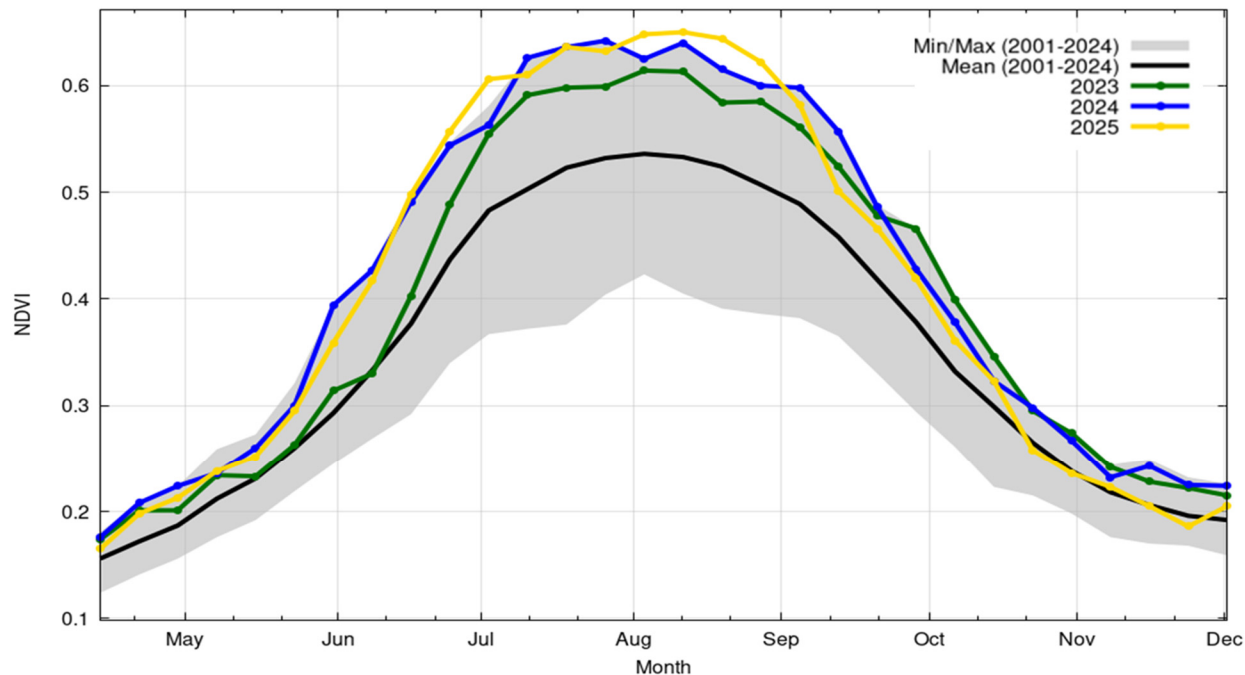
USDA estimates China marketing year (MY) 2025/26 cotton production at 35.0 million 480-pound bales, up 1 percent from last month, 9 percent from last year, and 20 percent above the 5-year average. Harvested area is estimated at 3.1 million hectares, unchanged from last month, up 5 percent from last year and 3 percent above the 5-year average. Yield is estimated at a record 2,499 kilograms per hectare, up 1 percent from last month, 4 percent from last year, and 17 percent above the 5-year average.



Source: USDA PSD Online

In recent years, yields continue to be significantly above the long-term trend due to the increasing quantity of cotton produced in Xinjiang province, where the yield has nearly doubled compared to elsewhere in the country. More than 90 percent of cotton is now produced in Xinjiang province using pest-resistant, genetically modified cotton seeds under highly mechanized farming and irrigation systems. According to Xinjiang Provincial Statistics Department, approximately 41 percent of cotton is produced by Xinjiang Production and Construction Engineering Corp, and 59 percent is produced by the Local Cooperative System.

Xinjiang Province Normalized Difference Vegetation Index (NDVI) Seasonal Time Series



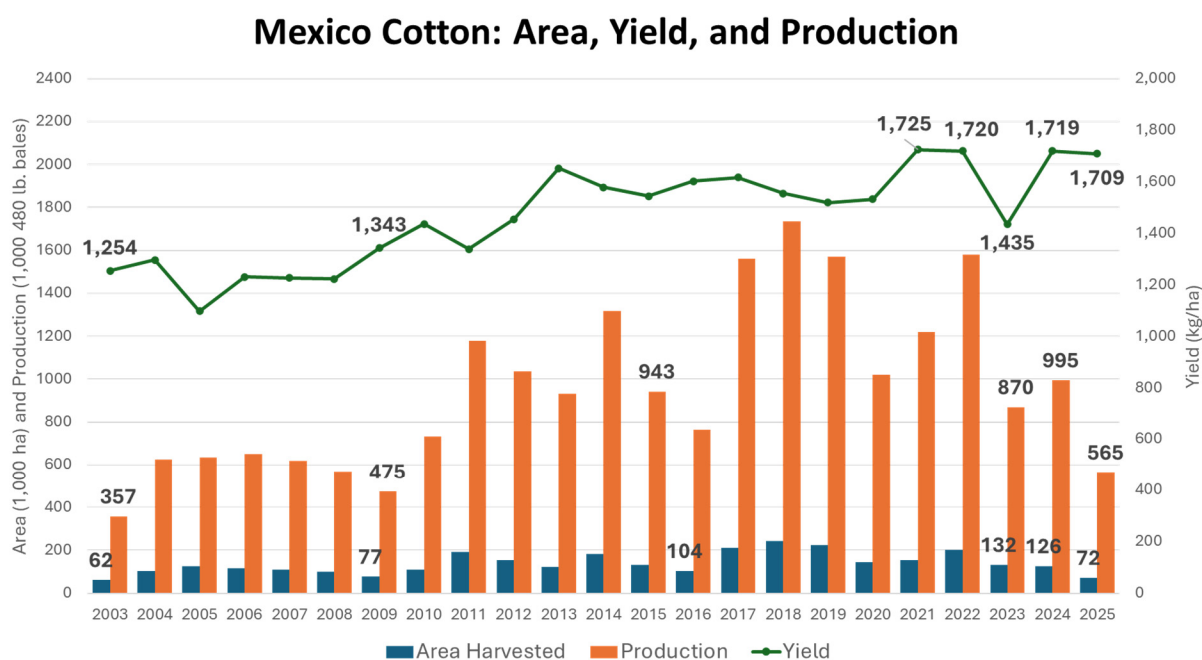
Source: USDA/NASA GLAM MODIS Terra 8-day NDVI;
ESA-WorldCover 2020 Crop Mask

The typical cotton growing season is April to October. In Xinjiang, planting starts in April while on the North China Plain and in the Yangtze River basin planting begins in late April and extends through May. The start-of-season satellite-based derivatives indicated favorable irrigation reservoir levels, soil moisture conditions and crop progress over the main cotton growing areas. These conditions facilitated rapid planting, early crop establishment and development. The observations were also supported by a combination of national and regional crop condition analysis inputs from FAS/Beijing. In Xinjiang, planting was completed within the optimum planting window that typically ends in May.

According to China Agricultural Supply and Demand Situation Analysis Report (CASDE), cotton in most areas of Xinjiang generally progressed favorably throughout the majority of the growing season ensuring higher yields than in previous years. The favorable crop growth and development was also indicated by the satellite-derived seasonal Normalized Difference Vegetation Index (NDVI). In addition to the favorable planting and crop development conditions, farmers continue to be encouraged by the government's continuation of the target price-based cotton subsidy. The year-to-year 5 percent increase in harvested area is primarily due to marginal area expansion in the major cotton producing province of Xinjiang, while regions outside Xinjiang continued to experience larger area reductions, especially on the North China Plain and in the Yangtze River basin. The significant year-to-year yield increase, especially in Xinjiang, continues to offset planted area reductions on the North China Plain and in the Yangtze River basin, resulting in a significant increase in national cotton production. *(For more information, please contact Dath.Mita@usda.gov.)*

Mexico Cotton: Production Drops Further due to Decreased Area

USDA estimates Mexico cotton production for marketing year (MY) 2025/26 at 565,000 480-pound bales, down 3 percent from last month and 43 percent from last year. Harvested area is estimated at 72,000 hectares (ha), down 4 percent from last month and 43 percent less than last year. Yield is estimated at 1,709 kilograms per hectare (kg/ha), up 1 percent from last month but down 1 percent from last year.

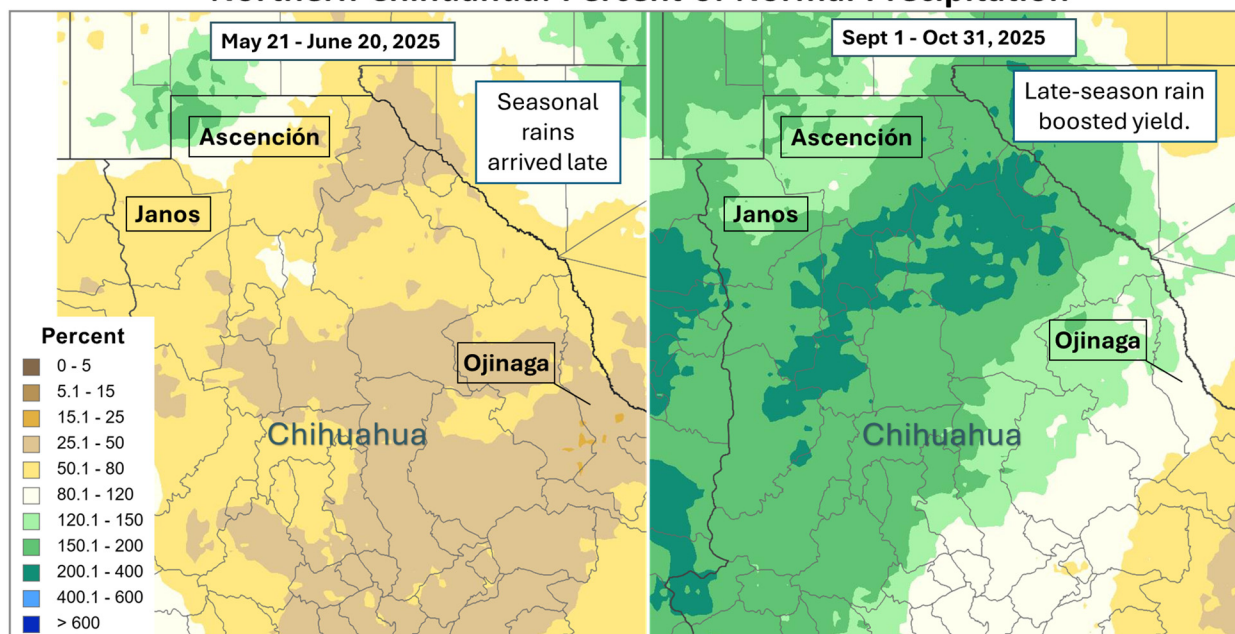


Source: USDA PSD Online

Farmers planted less cotton due to low international cotton prices in addition to higher input costs (averaging 25 percent above previous years), drought conditions during the two previous marketing years, limited access to improved seed varieties, and competition with textile products coming from Asia. Area estimates for Mexico cotton have not dropped below 70,000 ha since MY 2003/04.

Cotton is primarily irrigated and grown in the northern states of Mexico, with 85 percent produced in Chihuahua this year. This season, the rains had an impact on two occasions. First, since seasonal rains arrived late, farmers refrained from planting additional cotton as the season progressed. Second, rain later in the season boosted yields. Producers in key municipalities of Chihuahua – including Ascención, Janos, and Ojinaga – have reported high crop quality. Improved yields were also aided by fewer power outages supporting irrigation throughout the season.

Northern Chihuahua: Percent of Normal Precipitation



Source: Univ. of California at Santa Barbara, CHIRPS via the Global Agricultural & Disaster Assessment System (GADAS).

Up until last year, Coahuila was the second-largest producing state. According to FAS/Mexico City, farmers in Coahuila are estimated to produce less than 2,000 480-pound bales this marketing year, as compared to 55,000 480-pound bales in MY 2024/25, because farmers are reserving water for walnut trees.

Ninety-seven percent of cotton production is associated with Mexico's Spring-Summer reporting season. Almost all planting occurs in March and April, while harvest usually begins in late August through December. This year's harvest concluded in January. *(For more information, please contact Lisa.Colson@usda.gov.)*



**World Agricultural Production
U.S. Department of Agriculture**

Foreign Agricultural Service / Global Market Analysis
International Production Assessment Division (IPAD)
GMA/IPAD Room 5071, South Building
1400 Independence Ave SW
Washington, DC 20250-1051

This report uses information from the Foreign Agricultural Service's (FAS) global network of agricultural attachés and counselors, official statistics of foreign governments and other foreign source materials, and the analysis of economic data and satellite imagery. Estimates of foreign area, yield, and production are from the International Production Assessment Division (IPAD), FAS, and are reviewed by USDA's Inter-Agency Commodity Estimates Committee. Estimates of U.S. area, yield, and production are from USDA's National Agricultural Statistics Service. Numbers within the report may not add to totals because of rounding. This report reflects official USDA estimates released in the World Agricultural Supply and Demand Estimates (WASDE-584), February 10, 2026.

The FAS International Production Assessment Division prepared this report. The next issue of World Agricultural Production will be released after 12:00 p.m. Eastern Time, March 10, 2026.

Conversion Table

Metric tons to bushels

Wheat, soybeans	=	MT * 36.7437
Corn, sorghum, rye	=	MT * 39.36825
Barley	=	MT * 45.929625
Oats	=	MT * 68.894438

Metric tons to 480-lb bales

Cotton	=	MT * 4.592917
--------	---	---------------

Metric tons to hundredweight

Rice	=	MT * 22.04622
------	---	---------------

Area & weight

1 hectare	=	2.471044 acres
1 kilogram	=	2.204622 pounds



For further information, contact:
U.S. Department of Agriculture
Foreign Agricultural Service
Global Market Analysis

International Production Assessment Division
 GMA/IPAD Room 5071, South Building
 1400 Independence Ave SW
 Washington, DC 20250-1051

GENERAL INFORMATION

Senior Director	Ronald Frantz	ronald.frantz@usda.gov
Director	Vacant	
USDA Remote Sensing Advisor	Vacant	
Sr. Analyst/Technical Lead	Curt Reynolds, Ph.D.	curt.reynolds@usda.gov
Sr. Analyst/ Satellite Imagery	Dath Mita, Ph.D.	dath.mita@usda.gov
Archives Manager/Technical Lead		
Sr. Analyst/Technical Lead	Vacant	
GIS Mapping/Imagery Analyst	Lisa Colson	lisa.colson@usda.gov
WAP Coordinators	Shannon Moyo	shannon.moyo@usda.gov
	Vacant	

ANALYSIS REGIONS

ANALYST

CONTACT INFORMATION

Brazil, Pakistan, and South Asia	Aaron Mulhollen	aaron.mulhollen@usda.gov
South America (except Brazil), and Central Asia	Katie McGaughey	katie.mcgaughey@usda.gov
Europe, North Africa, and Middle East	Bryan Purcell	bryan.purcell@usda.gov
India, China and East Asia	Dath Mita, Ph.D.	dath.mita@usda.gov
South Africa and Sub-Saharan Africa	Curt Reynolds, Ph.D.	curt.reynolds@usda.gov
Southeast Asia	Justin Jenkins	justin.jenkins@usda.gov
Mexico and Central America	Lisa Colson	lisa.colson@usda.gov
Australia and Oceania	Shannon Moyo	shannon.moyo@usda.gov
Canada and Caribbean	Sarah Parker	sarah.parker@usda.gov
Russia, Ukraine, Kazakhstan, Moldova, and Belarus	Iliana Mladenova, Ph.D.	iliana.mladenova@usda.gov



The Foreign Agricultural Service (FAS) updates its production, supply and distribution (PSD) database for cotton, oilseeds, and grains at 12:00 p.m. on the day the *World Agricultural Supply and Demand Estimates* (WASDE) report is released. This circular is released by 12:15 p.m.

FAS Reports and Databases:

World Agricultural Production

Current: <https://www.fas.usda.gov/data/world-agricultural-production>

Archive: <https://esmis.nal.usda.gov/publication/world-agricultural-production>

USDA's Foreign Agricultural Service (FAS) publishes a monthly report on crop acreage, yield and production in major countries worldwide. Sources include reporting from FAS's worldwide offices, official statistics of foreign governments, and analysis of economic data and satellite imagery. The reports reflect official USDA estimates released in the monthly *World Agricultural Supply and Demand Estimates* (WASDE).

World Markets and Trade

Current: https://www.fas.usda.gov/data/search?reports%5B0%5D=report_type%3A10259

Archive: <https://esmis.nal.usda.gov/?f%5B0%5D=agency%3A1>

USDA's Foreign Agricultural Service (FAS) publishes monthly and quarterly reports which include data on U.S. and global trade, production, consumption and stocks, as well as analysis of developments affecting world trade in oilseeds, grains, cotton, livestock and poultry. The reports reflect official USDA estimates released in the monthly *World Agricultural Supply and Demand Estimates* (WASDE).

Global Agricultural Information Network (GAIN)

<https://gain.fas.usda.gov/>

USDA's Foreign Agricultural Service (FAS) provides timely reports on foreign markets through the Global Agriculture Information Network (GAIN) database. An average of 2,000 reports are added each year, with reports going back to 1995. GAIN reports are compiled by FAS' global market intelligence network, which includes FAS foreign service officers and locally engaged staff in over 90 overseas offices world-wide. They provide on-the-ground intelligence, insight, and analysis on nearly 200 countries, delivering information on foreign agricultural markets, crop conditions, and agro-political dynamics of interest to U.S. agriculture. GAIN reports contain assessments of commodity and trade issues made by USDA staff and are not necessarily statements of official U.S. government policy.

Production, Supply and Distribution (PS&D) Online

<https://apps.fas.usda.gov/psdonline/app/index.html#/app/home>

PSD Online is the public repository for USDA's Official Production, Supply and Distribution forecast data and reports for key agricultural commodities. PSD Online data are reviewed and updated monthly by an interagency committee chaired by USDA's World Agricultural Outlook Board (WAOB). The committee consist of representatives from Foreign Agricultural Service (FAS), the Economic Research Service (ERS), the Farm Service Agency (FSA), and the Agricultural Marketing Service (AMS).

EU Countries and Russia Wheat: Area and Production Estimates

<https://apps.fas.usda.gov/psdonline/app/index.html#/app/downloads> (click on PSD Datasets)

USDA's Foreign Agricultural Service (FAS) provides country-level area and production estimates for the nations of the European Union. For Russia, country-level area and production estimates are provided for Winter and Spring wheat. These datasets are reviewed and updated monthly by an interagency committee chaired by USDA's World Agricultural Outlook Board (WAOB) and can be downloaded through PSD datasets on PSD Online.

Approved by the World Agricultural Outlook Board



FAS Reports and Databases:

International Production Assessment (IPAD)

Due to U.S. Department of Agriculture (USDA) guidance, the International Production Assessment Division (IPAD) website is no longer available to the public. Crop production maps, crop calendars, and historical commodity-specific area, yield, and production data is available on the FAS website.

<https://www.fas.usda.gov/data>

USDA and NASA Global Agricultural Monitoring (GLAM)

<https://glam1.gsfc.nasa.gov/>

The USDA and NASA Global Agricultural Monitoring (GLAM) system provides near real-time and science quality Moderate Resolution Imaging Spectroradiometer (MODIS) Normalized Difference Vegetation Index (NDVI) from the satellites Terra and Aqua. The public can view and retrieve MODIS 8-day composited, global NDVI satellite imagery and time series data. GLAM was developed by NASA's Global Inventory Modeling and Mapping Studies (GIMMS) group for USDA's Foreign Agricultural Service.

Global Agricultural and Disaster Assessment System (GADAS)

<https://geo.fas.usda.gov/GADAS/index.html>

USDA's Foreign Agricultural Service (FAS) provides the Global Agricultural and Disaster Assessment System (GADAS), a web-based Geographic Information System (GIS) tool which integrates a vast array of highly detailed earth observation data streams, particularly targeted towards agricultural and disaster assessment analysis. GADAS is an interactive website which provides analysts with a wide variety of routine geospatial products (maps, charts, tables) they require for comprehensive situational investigations and recurring assessments.

Export Sales Reporting

<https://apps.fas.usda.gov/esrquery/>

USDA's Export Sales Reporting Program monitors U.S. agricultural export sales on a daily and weekly basis. Export sales reporting provides a constant stream of up-to-date market information for 40 U.S. agricultural commodities sold abroad. The weekly U.S. Export Sales report is the most currently available source of U.S. exports sales data. The data is used to analyze overall levels of export demand, determine where markets exit, and assess the relative position of U.S. commodities in foreign markets.

Global Agricultural Trade System (GATS)

<https://apps.fas.usda.gov/gats/default.aspx>

The Global Agricultural Trade System (GATS) is a searchable database containing monthly U.S. Census Bureau trade data organized by agricultural commodity and agricultural related product groups. Trade data is searchable by partner countries and partner groups. Historical U.S. agricultural trade data is available back to 1967. In addition, U.N. trade statistics (UN Comtrade) may be queried through GATS. UN trade data is available for nearly 200 countries or areas, dating from the inception of the Harmonized System (HS) of trade codes in 1989 to present. The database is continuously updated. U.S. trade data is updated monthly according to the U.S. Census Bureau's reporting system. UN Comtrade data are updated in GATS after nationally submitted data to the UN are standardized by the UN Statistical Division and added to the UN Comtrade database.

Other USDA Reports:

World Agricultural Supply and Demand Estimates (WASDE):

<http://www.usda.gov/oce/commodity/wasde/>

Economic Research Service:

<http://www.ers.usda.gov/topics/crops>

National Agricultural Statistics Service:

<http://www.nass.usda.gov/Publications/>

Table 01 World Crop Production Summary

Million Metric Tons

Commodity	World	Total Foreign	North America			Former Soviet		European	Asia (WAP)					South America		Selected Other			All Others	
			United States	Canada	Mexico	Russia	Ukraine		China	India	Indonesia	Pakistan	Thailand	Argentina	Brazil	Australia	South Africa	Turkey		
			-	-	-	-	-		-	-	-	-	-	-	-	-	-	-		-
---Million metric tons---																				
Wheat																				
2023/24	791.5	742.4	49.1	33.4	3.5	91.5	23.0	nr	136.6	110.6	0.0	28.2	0.0	15.9	8.1	26.0	2.1	21.0	242.8	
2024/25 prel.	800.4	746.6	53.9	35.9	2.6	81.6	23.4	nr	140.1	113.3	0.0	31.4	0.0	18.5	7.9	34.1	1.9	19.0	236.7	
2025/26 proj.																				
Jan	842.2	788.2	54.0	40.0	1.8	89.5	23.0	nr	140.1	117.9	0.0	29.0	0.0	27.5	8.0	37.0	2.0	18.0	254.5	
Feb	841.8	787.8	54.0	40.0	1.8	89.5	23.0	nr	140.1	117.9	0.0	29.0	0.0	27.8	8.0	37.0	1.9	17.5	254.4	
Coarse Grains																				
2023/24	1,507.5	1,104.6	402.9	27.5	28.9	42.5	39.8	nr	297.4	57.2	12.7	10.2	5.4	60.0	124.8	14.5	13.9	17.0	352.8	
2024/25 prel.	1,511.3	1,119.8	391.5	27.5	28.3	34.8	33.5	nr	303.5	61.6	13.1	8.6	5.4	58.5	143.6	17.7	17.6	14.5	351.9	
2025/26 proj.																				
Jan	1,590.6	1,142.8	447.8	29.5	31.2	39.1	35.6	nr	310.2	62.1	13.0	10.1	5.6	61.8	137.6	19.9	17.1	14.7	355.5	
Feb	1,590.4	1,142.6	447.8	29.5	30.9	39.1	35.6	nr	310.2	62.1	13.0	10.1	5.6	62.3	137.6	19.9	17.0	14.2	355.6	
Rice, Milled																				
2023/24	524.0	517.0	6.9	0.0	0.2	0.7	0.0	nr	144.6	137.8	33.0	9.9	20.0	0.8	7.2	0.4	0.0	0.5	161.8	
2024/25 prel.	541.7	534.6	7.1	0.0	0.2	0.8	0.0	nr	145.3	150.0	34.1	9.7	20.8	1.1	8.7	0.4	0.0	0.6	163.0	
2025/26 proj.																				
Jan	541.2	534.6	6.6	0.0	0.2	0.8	0.0	nr	146.3	152.0	33.6	9.4	20.4	0.9	7.6	0.2	0.0	0.5	162.7	
Feb	541.3	534.7	6.6	0.0	0.2	0.8	0.0	nr	146.3	152.0	33.6	9.4	20.4	0.9	7.6	0.2	0.0	0.6	162.8	
Total Grains																				
2023/24	2,823.0	2,364.1	458.9	60.9	32.6	134.7	62.8	nr	578.6	305.5	45.7	48.3	25.4	76.7	140.1	40.9	16.0	38.6	757.4	
2024/25 prel.	2,853.4	2,401.0	452.4	63.5	31.1	117.2	56.9	nr	588.8	324.8	47.2	49.7	26.2	78.0	160.2	52.2	19.6	34.0	751.6	
2025/26 proj.																				
Jan	2,973.9	2,465.5	508.4	69.4	33.1	129.3	58.6	nr	596.6	332.0	46.6	48.5	26.0	90.2	153.2	57.1	19.1	33.2	772.7	
Feb	2,973.5	2,465.1	508.4	69.4	32.8	129.3	58.6	nr	596.6	332.1	46.6	48.5	26.0	91.0	153.2	57.1	18.9	32.2	772.8	
Oilseeds																				
2023/24	657.4	535.2	122.2	26.5	0.6	28.1	25.5	nr	66.9	41.4	13.9	3.8	1.0	54.2	160.3	7.4	2.8	3.1	99.6	
2024/25 prel.	684.9	556.3	128.6	26.9	0.8	28.6	24.0	nr	67.8	42.2	14.7	2.9	1.0	59.1	178.6	7.9	3.9	3.1	94.9	
2025/26 proj.																				
Jan	693.1	566.9	126.2	28.9	0.6	31.6	20.1	nr	69.4	41.1	15.1	2.9	1.0	56.1	185.6	8.4	3.8	2.8	99.4	
Feb	695.8	569.5	126.2	28.9	0.6	31.6	20.1	nr	69.6	41.1	15.1	2.9	1.0	56.0	187.6	8.4	3.8	2.8	99.9	
Cotton																				
2023/24	112.2	100.2	12.1	0.0	0.9	0.0	0.0	1.0	27.4	25.4	0.0	7.0	0.0	1.7	14.6	5.0	0.1	3.2	14.0	
2024/25 prel.	118.5	104.1	14.4	0.0	1.0	0.0	0.0	1.2	32.0	23.2	0.0	5.0	0.0	1.4	17.0	5.6	0.1	4.0	13.7	
2025/26 proj.																				
Jan	119.4	105.5	13.9	0.0	0.6	0.0	0.0	1.2	34.5	23.5	0.0	5.0	0.0	1.5	18.8	4.5	0.1	3.0	13.0	
Feb	119.9	105.9	13.9	0.0	0.6	0.0	0.0	1.2	35.0	23.5	0.0	5.0	0.0	1.4	18.8	4.5	0.1	3.0	13.0	

1/ Includes wheat, coarse grains, and rice (milled) shown above.

Table 02 Wheat Area, Yield, and Production

Country / Region	Area (Million hectares)				Yield (Metric tons per hectare)				Production (Million metric tons)				Change in Production			
	2023/24	Prel.	2025/26 Proj.		2023/24	Prel.	2025/26 Proj.		2023/24	Prel.	2025/26 Proj.		From last month		From last year	
		2024/25	Jan	Feb		2024/25	Jan	Feb		2024/25	Jan	Feb	MMT	Percent	MMT	Percent
World	222.25	222.20	219.95	219.88	3.56	3.60	3.83	3.83	791.53	800.43	842.17	841.80	-0.37	-0.04	41.36	5.17
United States	15.01	15.63	15.07	15.07	3.27	3.44	3.58	3.58	49.10	53.85	54.01	54.01	0.00	0.00	0.16	0.30
Total Foreign	207.25	206.56	204.88	204.81	3.58	3.61	3.85	3.85	742.44	746.58	788.16	787.79	-0.37	-0.05	41.21	5.52
European Union	24.32	22.74	23.97	23.97	5.57	5.37	6.01	6.01	135.38	122.15	144.00	144.00	0.00	0.00	21.85	17.89
United Kingdom	1.72	1.53	1.63	1.63	8.13	7.30	7.27	7.34	13.98	11.15	11.85	11.96	0.11	0.91	0.81	7.29
Serbia	0.73	0.63	0.60	0.60	4.69	5.28	5.50	5.50	3.40	3.30	3.30	3.30	0.00	0.00	0.00	0.00
China	23.63	23.59	23.58	23.58	5.78	5.94	5.94	5.94	136.59	140.10	140.07	140.07	0.00	0.00	-0.03	-0.02
South Asia																
India	31.40	31.83	32.80	32.80	3.52	3.56	3.60	3.60	110.55	113.29	117.95	117.95	0.00	0.00	4.65	4.11
Pakistan	9.03	9.73	9.10	9.10	3.12	3.23	3.18	3.18	28.16	31.44	28.98	28.98	0.00	0.00	-2.46	-7.82
Afghanistan	2.02	2.12	2.25	2.25	2.15	2.28	2.13	2.13	4.35	4.83	4.80	4.80	0.00	0.00	-0.03	-0.56
Nepal	0.68	0.72	0.71	0.71	2.99	2.92	3.10	3.10	2.04	2.10	2.20	2.20	0.00	0.00	0.10	4.76
Former Soviet Union - 12																
Russia	28.83	27.80	26.30	26.30	3.17	2.94	3.40	3.40	91.50	81.60	89.50	89.50	0.00	0.00	7.90	9.68
Russia Winter	15.27	15.70	15.50	15.50	4.19	3.55	4.06	4.06	64.00	55.80	63.00	63.00	0.00	0.00	7.20	12.90
Russia Spring	13.56	12.10	10.80	10.80	2.03	2.13	2.45	2.45	27.50	25.80	26.50	26.50	0.00	0.00	0.70	2.71
Ukraine	5.01	5.20	5.50	5.50	4.59	4.50	4.18	4.18	23.00	23.40	23.00	23.00	0.00	0.00	-0.40	-1.71
Kazakhstan	13.13	13.07	12.20	12.20	0.92	1.42	1.55	1.55	12.11	18.58	18.90	18.90	0.00	0.00	0.32	1.74
Uzbekistan	1.23	1.30	1.32	1.32	5.27	5.18	4.64	4.64	6.47	6.73	6.10	6.10	0.00	0.00	-0.63	-9.35
Belarus	0.66	0.72	0.73	0.73	3.61	3.82	3.70	3.70	2.40	2.75	2.70	2.70	0.00	0.00	-0.05	-1.82
Canada	10.71	10.65	10.62	10.62	3.12	3.37	3.76	3.76	33.41	35.94	39.96	39.96	0.00	0.00	4.02	11.17
South America																
Argentina	5.58	6.34	6.50	6.50	2.84	2.92	4.23	4.28	15.85	18.51	27.50	27.80	0.30	1.09	9.29	50.19
Brazil	3.47	3.06	2.45	2.45	2.33	2.58	3.27	3.27	8.10	7.89	8.00	8.00	0.00	0.00	0.11	1.41
Australia	12.37	13.06	12.70	12.70	2.10	2.61	2.91	2.91	25.96	34.11	37.00	37.00	0.00	0.00	2.89	8.47
Africa																
Egypt	1.35	1.30	1.33	1.33	6.57	6.92	6.92	6.92	8.87	9.00	9.20	9.20	0.00	0.00	0.20	2.22
Morocco	2.43	2.20	2.20	2.20	1.71	1.12	1.59	1.59	4.16	2.46	3.50	3.50	0.00	0.00	1.04	42.28
Algeria	1.80	1.80	1.80	1.80	1.50	1.67	1.78	1.78	2.70	3.00	3.20	3.20	0.00	0.00	0.20	6.67
Ethiopia	1.90	1.95	2.00	2.00	3.05	3.18	3.20	3.20	5.80	6.20	6.40	6.40	0.00	0.00	0.20	3.23
Middle East																
Turkey	7.20	7.25	7.30	7.30	2.92	2.62	2.47	2.40	21.00	19.00	18.00	17.50	-0.50	-2.78	-1.50	-7.89
Iran	6.20	6.20	6.20	6.20	2.26	2.58	2.18	2.18	14.00	16.00	13.50	13.50	0.00	0.00	-2.50	-15.63
Iraq	2.60	2.70	2.40	2.40	2.00	2.22	1.83	1.83	5.20	6.00	4.40	4.40	0.00	0.00	-1.60	-26.67
Syria	1.50	1.40	1.20	1.20	2.03	2.14	0.96	0.96	3.03	3.00	1.15	1.15	0.00	0.00	-1.85	-61.67
Mexico	0.56	0.47	0.32	0.32	6.21	5.66	5.47	5.47	3.48	2.65	1.75	1.75	0.00	0.00	-0.90	-33.91
Others	7.18	7.21	7.19	7.12	2.92	2.97	2.96	2.95	20.95	21.42	21.26	20.98	-0.28	-1.30	-0.44	-2.06

Table 03 Total Coarse Grain Area, Yield, and Production

Country / Region	Area (Million hectares)				Yield (Metric tons per hectare)				Production (Million metric tons)				Change in Production			
	Prel.		2025/26 Proj.		Prel.		2025/26 Proj.		Prel.		2025/26 Proj.		From last month		From last year	
	2023/24	2024/25	Jan	Feb	2023/24	2024/25	Jan	Feb	2023/24	2024/25	Jan	Feb	MMT	Percent	MMT	Percent
World	339.72	334.34	339.88	339.80	4.44	4.52	4.68	4.68	1,507.48	1,511.32	1,590.61	1,590.43	-0.18	-0.01	79.12	5.24
United States	38.99	37.16	40.60	40.60	10.33	10.53	11.03	11.03	402.88	391.51	447.83	447.83	0.00	0.00	56.32	14.38
Total Foreign	300.73	297.17	299.28	299.20	3.67	3.77	3.82	3.82	1,104.60	1,119.80	1,142.78	1,142.60	-0.18	-0.02	22.80	2.04
China	46.71	47.24	47.54	47.54	6.37	6.42	6.53	6.53	297.38	303.47	310.19	310.19	0.00	0.00	6.72	2.22
European Union	26.02	26.31	25.63	25.65	5.27	5.20	5.51	5.51	137.04	136.80	141.11	141.31	0.20	0.14	4.51	3.30
United Kingdom	1.38	1.47	1.37	1.37	5.87	5.64	5.63	5.54	8.08	8.30	7.73	7.61	-0.12	-1.55	-0.70	-8.40
South America																
Brazil	23.77	24.55	24.79	24.79	5.25	5.85	5.55	5.55	124.81	143.59	137.61	137.61	0.00	0.00	-5.97	-4.16
Argentina	10.05	9.35	9.99	9.99	5.97	6.25	6.19	6.24	59.98	58.46	61.82	62.32	0.50	0.81	3.87	6.61
Former Soviet Union - 12																
Russia	12.88	11.74	11.03	11.03	3.30	2.96	3.54	3.54	42.54	34.78	39.05	39.05	0.00	0.00	4.28	12.29
Ukraine	6.24	6.05	6.06	6.06	6.38	5.53	5.87	5.87	39.78	33.47	35.58	35.58	0.00	0.00	2.11	6.31
Kazakhstan	2.87	2.72	2.70	2.70	1.40	1.94	1.85	1.85	4.01	5.27	5.00	5.00	0.00	0.00	-0.27	-5.18
Belarus	0.93	1.17	1.17	1.17	3.54	3.36	3.56	3.56	3.28	3.92	4.16	4.16	0.00	0.00	0.24	6.12
Africa																
Nigeria	11.88	11.86	12.08	12.08	1.60	1.62	1.61	1.61	19.00	19.18	19.49	19.49	0.00	0.00	0.31	1.62
South Africa	3.18	3.15	3.20	3.20	4.38	5.60	5.34	5.33	13.94	17.62	17.05	17.04	-0.02	-0.09	-0.59	-3.32
Tanzania	5.18	5.15	5.05	5.05	1.74	1.87	1.60	1.60	9.03	9.63	8.08	8.08	0.00	0.00	-1.55	-16.05
Burkina Faso	3.98	4.20	4.10	4.10	1.16	1.08	1.13	1.13	4.63	4.55	4.65	4.65	0.00	0.00	0.10	2.20
Ethiopia	5.41	5.64	5.69	5.69	3.25	3.18	3.16	3.16	17.56	17.91	17.99	17.99	0.00	0.00	0.08	0.42
Egypt	1.12	1.09	1.02	1.02	7.19	7.22	7.41	7.41	8.07	7.88	7.57	7.57	0.00	0.00	-0.31	-3.93
Mali	5.24	4.90	5.10	5.10	1.31	1.55	1.37	1.37	6.86	7.58	7.00	7.00	0.00	0.00	-0.58	-7.63
India	25.02	25.75	25.03	25.03	2.28	2.39	2.48	2.48	57.16	61.55	62.06	62.12	0.06	0.10	0.57	0.92
Southeast Asia																
Indonesia	3.70	3.50	3.50	3.50	3.43	3.74	3.71	3.71	12.70	13.10	13.00	13.00	0.00	0.00	-0.10	-0.76
Philippines	2.49	2.45	2.48	2.48	3.26	3.40	3.33	3.33	8.12	8.33	8.27	8.27	0.00	0.00	-0.06	-0.73
Vietnam	0.89	0.87	0.84	0.84	5.01	5.03	5.03	5.03	4.44	4.35	4.20	4.20	0.00	0.00	-0.15	-3.45
Thailand	1.25	1.24	1.25	1.25	4.29	4.32	4.45	4.45	5.35	5.35	5.55	5.55	0.00	0.00	0.20	3.74
Mexico	7.71	7.05	8.38	8.28	3.75	4.01	3.72	3.73	28.93	28.27	31.19	30.89	-0.30	-0.96	2.62	9.27
Canada	5.24	5.05	5.05	5.05	5.25	5.45	5.84	5.84	27.52	27.52	29.48	29.48	0.00	0.00	1.96	7.11
Australia	5.61	6.08	6.45	6.45	2.58	2.91	3.09	3.09	14.48	17.70	19.92	19.92	0.00	0.00	2.22	12.57
Middle East																
Turkey	4.59	4.55	4.35	4.35	3.72	3.18	3.37	3.25	17.05	14.46	14.65	14.15	-0.50	-3.41	-0.31	-2.14
Iran	1.86	1.81	1.86	1.86	2.38	2.50	2.38	2.38	4.42	4.52	4.42	4.42	0.00	0.00	-0.10	-2.21
Others	75.56	72.27	73.59	73.59	1.70	1.69	1.71	1.71	128.45	122.26	125.96	125.96	0.00	0.00	3.70	3.03

World and Selected Countries and Regions; Coarse Grain includes: Barley, Corn, Millet, Mixed Grains, Oats, Rye and Sorghum

Table 04 Corn Area, Yield, and Production

Country / Region	Area (Million hectares)				Yield (Metric tons per hectare)				Production (Million metric tons)				Change in Production			
	2023/24	Prel.	2025/26 Proj.		2023/24	Prel.	2025/26 Proj.		2023/24	Prel.	2025/26 Proj.		From last month		From last year	
		2024/25	Jan	Feb		2024/25	Jan	Feb		2024/25	Jan	Feb	MMT	Percent	MMT	Percent
World	208.01	202.51	210.14	210.06	5.92	6.08	6.17	6.17	1,231.14	1,230.58	1,296.01	1,295.91	-0.10	-0.01	65.33	5.31
United States	35.01	33.61	36.93	36.93	11.13	11.26	11.71	11.71	389.67	378.27	432.34	432.34	0.00	0.00	54.07	14.30
Total Foreign	173.00	168.90	173.21	173.13	4.86	5.05	4.99	4.99	841.47	852.32	863.67	863.57	-0.10	-0.01	11.26	1.32
China	44.22	44.74	44.96	44.96	6.53	6.59	6.70	6.70	288.84	294.92	301.24	301.24	0.00	0.00	6.32	2.14
South America																
Brazil	21.65	22.30	22.60	22.60	5.50	6.10	5.80	5.80	119.00	136.00	131.00	131.00	0.00	0.00	-5.00	-3.68
Argentina	7.73	6.90	7.50	7.50	6.68	7.25	7.07	7.07	51.60	50.00	53.00	53.00	0.00	0.00	3.00	6.00
Bolivia	0.44	0.43	0.44	0.44	2.53	2.56	2.61	2.61	1.12	1.10	1.15	1.15	0.00	0.00	0.05	4.55
European Union	8.28	8.68	8.15	8.17	7.48	6.80	6.96	6.97	61.95	59.02	56.75	56.95	0.20	0.35	-2.07	-3.51
Africa																
South Africa	2.98	2.96	3.00	3.00	4.50	5.77	5.50	5.50	13.43	17.06	16.50	16.50	0.00	0.00	-0.56	-3.28
Nigeria	5.10	5.06	5.20	5.20	2.17	2.22	2.20	2.20	11.05	11.22	11.44	11.44	0.00	0.00	0.22	1.99
Ethiopia	2.50	2.55	2.60	2.60	4.00	4.00	3.96	3.96	10.00	10.20	10.30	10.30	0.00	0.00	0.10	0.98
Egypt	0.95	0.92	0.85	0.85	7.58	7.61	7.88	7.88	7.20	7.00	6.70	6.70	0.00	0.00	-0.30	-4.29
Tanzania	4.20	4.10	4.00	4.00	1.91	2.07	1.75	1.75	8.01	8.50	7.00	7.00	0.00	0.00	-1.50	-17.65
Malawi	1.79	1.50	1.80	1.80	1.96	2.00	1.67	1.67	3.51	3.00	3.00	3.00	0.00	0.00	0.00	0.00
Zambia	1.42	0.69	1.69	1.69	2.30	2.21	2.16	2.16	3.26	1.51	3.66	3.66	0.00	0.00	2.15	141.96
Kenya	2.43	2.10	2.30	2.30	1.76	1.81	1.91	1.91	4.29	3.80	4.40	4.40	0.00	0.00	0.60	15.79
Uganda	2.27	2.30	2.30	2.30	2.18	2.17	2.17	2.17	4.95	5.00	5.00	5.00	0.00	0.00	0.00	0.00
Zimbabwe	1.00	0.90	1.00	1.00	1.50	0.71	1.50	1.50	1.50	0.64	1.50	1.50	0.00	0.00	0.87	136.22
Former Soviet Union - 12																
Ukraine	4.20	4.10	4.20	4.20	7.74	6.54	6.90	6.90	32.50	26.80	29.00	29.00	0.00	0.00	2.20	8.21
Russia	2.40	2.70	2.30	2.30	6.92	5.19	6.30	6.30	16.60	14.00	14.50	14.50	0.00	0.00	0.50	3.57
South Asia																
India	11.24	11.20	11.50	11.50	3.35	3.78	3.74	3.74	37.67	42.28	43.00	43.00	0.00	0.00	0.72	1.70
Pakistan	1.64	1.44	1.56	1.56	6.00	5.73	6.28	6.28	9.85	8.24	9.80	9.80	0.00	0.00	1.56	18.95
Nepal	0.92	0.97	0.97	0.97	3.49	3.11	3.21	3.21	3.19	3.00	3.10	3.10	0.00	0.00	0.10	3.33
Southeast Asia																
Indonesia	3.70	3.50	3.50	3.50	3.43	3.74	3.71	3.71	12.70	13.10	13.00	13.00	0.00	0.00	-0.10	-0.76
Philippines	2.49	2.45	2.48	2.48	3.26	3.40	3.33	3.33	8.12	8.33	8.27	8.27	0.00	0.00	-0.06	-0.73
Vietnam	0.89	0.87	0.84	0.84	5.01	5.03	5.03	5.03	4.44	4.35	4.20	4.20	0.00	0.00	-0.15	-3.45
Thailand	1.22	1.21	1.22	1.22	4.34	4.38	4.51	4.51	5.30	5.30	5.50	5.50	0.00	0.00	0.20	3.77
Mexico	6.10	5.49	6.80	6.70	3.86	4.21	3.82	3.84	23.55	23.10	26.00	25.70	-0.30	-1.15	2.60	11.26
Canada	1.52	1.45	1.46	1.46	10.15	10.59	10.18	10.18	15.42	15.35	14.87	14.87	0.00	0.00	-0.48	-3.12
Turkey	0.65	0.56	0.61	0.61	12.92	12.14	12.95	12.95	8.40	6.80	7.90	7.90	0.00	0.00	1.10	16.18
Others	29.08	26.85	27.39	27.39	2.55	2.71	2.63	2.63	74.04	72.71	71.90	71.90	0.00	0.00	-0.81	-1.11

World and Selected Countries and Regions

Table 05 Barley Area, Yield, and Production

Country / Region	Area (Million hectares)				Yield (Metric tons per hectare)				Production (Million metric tons)				Change in Production			
	Prel.		2025/26 Proj.		Prel.		2025/26 Proj.		Prel.		2025/26 Proj.		From last month		From last year	
	2023/24	2024/25	Jan	Feb	2023/24	2024/25	Jan	Feb	2023/24	2024/25	Jan	Feb	MMT	Percent	MMT	Percent
World	46.92	45.93	44.79	44.79	3.06	3.12	3.43	3.43	143.50	143.39	153.74	153.72	-0.02	-0.02	10.33	7.20
United States	1.04	0.76	0.71	0.71	3.89	4.12	4.30	4.30	4.05	3.15	3.07	3.07	0.00	0.00	-0.08	-2.48
Total Foreign	45.88	45.17	44.08	44.08	3.04	3.10	3.42	3.42	139.45	140.25	150.68	150.65	-0.02	-0.02	10.41	7.42
European Union	10.35	10.31	10.20	10.20	4.63	4.88	5.49	5.49	47.90	50.29	56.00	56.00	0.00	0.00	5.72	11.37
United Kingdom	1.14	1.20	1.10	1.10	6.12	5.91	5.86	5.79	6.96	7.09	6.45	6.37	-0.08	-1.29	-0.72	-10.21
Former Soviet Union - 12																
Russia	7.65	6.60	6.40	6.40	2.68	2.46	3.03	3.03	20.50	16.25	19.40	19.40	0.00	0.00	3.15	19.38
Ukraine	1.68	1.60	1.60	1.60	3.78	3.63	3.69	3.69	6.35	5.80	5.90	5.90	0.00	0.00	0.10	1.72
Kazakhstan	2.43	2.28	2.30	2.30	1.08	1.68	1.61	1.61	2.61	3.84	3.70	3.70	0.00	0.00	-0.14	-3.65
Belarus	0.28	0.37	0.35	0.35	4.09	2.97	3.57	3.57	1.15	1.10	1.25	1.25	0.00	0.00	0.15	13.64
Azerbaijan	0.36	0.36	0.37	0.37	2.99	3.06	2.97	2.97	1.07	1.10	1.10	1.10	0.00	0.00	0.00	0.00
Canada	2.70	2.39	2.28	2.28	3.29	3.40	4.27	4.27	8.91	8.14	9.73	9.73	0.00	0.00	1.58	19.41
Australia	4.21	4.62	4.80	4.80	2.57	2.87	3.23	3.23	10.80	13.27	15.50	15.50	0.00	0.00	2.24	16.85
Middle East																
Turkey	3.70	3.75	3.50	3.50	2.16	1.87	1.74	1.60	8.00	7.00	6.10	5.60	-0.50	-8.20	-1.40	-20.00
Iran	1.65	1.60	1.65	1.65	1.82	1.94	1.82	1.82	3.00	3.10	3.00	3.00	0.00	0.00	-0.10	-3.23
Iraq	0.16	1.00	0.60	0.60	1.29	1.40	1.08	1.08	0.20	1.40	0.65	0.65	0.00	0.00	-0.75	-53.57
Syria	1.43	1.10	1.00	1.00	0.88	1.09	0.35	0.35	1.26	1.20	0.35	0.35	0.00	0.00	-0.85	-70.83
Africa																
Ethiopia	0.98	0.98	0.98	0.98	2.50	2.54	2.54	2.54	2.45	2.49	2.49	2.49	0.00	0.00	0.00	0.00
Morocco	1.17	0.80	0.80	0.80	1.15	0.83	1.19	1.19	1.35	0.66	0.95	0.95	0.00	0.00	0.29	43.94
Algeria	1.03	1.03	1.03	1.03	1.00	1.17	1.32	1.32	1.03	1.20	1.35	1.35	0.00	0.00	0.15	12.50
Tunisia	0.11	0.23	0.29	0.29	0.83	1.21	1.90	1.90	0.09	0.27	0.55	0.55	0.00	0.00	0.28	102.21
South Africa	0.11	0.10	0.10	0.10	3.49	3.68	3.50	3.50	0.38	0.37	0.35	0.35	0.00	0.00	-0.02	-5.91
South America																
Argentina	1.30	1.31	1.30	1.30	3.92	3.67	3.92	4.31	5.10	4.82	5.10	5.60	0.50	9.80	0.78	16.09
Uruguay	0.19	0.27	0.17	0.17	4.87	4.32	4.85	4.85	0.92	1.17	0.80	0.80	0.00	0.00	-0.37	-31.86
Brazil	0.14	0.12	0.14	0.14	2.90	3.56	3.78	3.78	0.39	0.44	0.51	0.51	0.00	0.00	0.07	16.44
India	0.63	0.55	0.53	0.53	3.05	3.08	3.52	3.63	1.91	1.70	1.86	1.92	0.06	3.17	0.22	12.95
China	0.50	0.50	0.56	0.56	4.00	4.00	4.11	4.11	2.00	2.00	2.30	2.30	0.00	0.00	0.30	15.00
Mexico	0.29	0.32	0.30	0.30	2.72	2.83	2.70	2.70	0.78	0.89	0.81	0.81	0.00	0.00	-0.08	-8.99
Afghanistan	0.07	0.10	0.07	0.07	1.36	1.88	1.54	1.54	0.09	0.19	0.10	0.10	0.00	0.00	-0.09	-47.37
Others	1.66	1.67	1.69	1.69	2.57	2.67	2.60	2.60	4.26	4.47	4.39	4.39	0.00	0.00	-0.08	-1.81

World and Selected Countries and Regions

Table 06 Oats Area, Yield, and Production

Country / Region	Area (Million hectares)				Yield (Metric tons per hectare)				Production (Million metric tons)				Change in Production			
	2023/24	Prel.	2025/26 Proj.		2023/24	Prel.	2025/26 Proj.		2023/24	Prel.	2025/26 Proj.		From last month		From last year	
		2024/25	Jan	Feb		2024/25	Jan	Feb		2024/25	Jan	Feb	MMT	Percent	MMT	Percent
World	8.35	8.72	9.00	9.00	2.32	2.59	2.70	2.69	19.40	22.57	24.30	24.25	-0.05	-0.21	1.68	7.46
United States	0.34	0.36	0.38	0.38	2.46	2.74	2.65	2.65	0.83	0.99	1.01	1.01	0.00	0.00	0.02	1.92
Total Foreign	8.01	8.35	8.62	8.62	2.32	2.58	2.70	2.70	18.57	21.58	23.29	23.24	-0.05	-0.22	1.67	7.72
European Union	2.28	2.48	2.54	2.54	2.60	3.12	3.16	3.16	5.94	7.76	8.00	8.00	0.00	0.00	0.24	3.13
Former Soviet Union - 12																
Russia	1.77	1.60	1.70	1.70	1.86	1.88	2.24	2.24	3.30	3.00	3.80	3.80	0.00	0.00	0.80	26.67
Ukraine	0.17	0.17	0.14	0.14	2.53	2.71	2.57	2.57	0.43	0.46	0.36	0.36	0.00	0.00	-0.10	-21.74
Belarus	0.16	0.16	0.15	0.15	2.26	2.06	2.33	2.33	0.35	0.32	0.35	0.35	0.00	0.00	0.03	9.38
Kazakhstan	0.19	0.19	0.18	0.18	0.79	1.71	1.14	1.14	0.15	0.33	0.20	0.20	0.00	0.00	-0.13	-39.39
Canada	0.83	0.99	1.05	1.05	3.20	3.38	3.74	3.74	2.64	3.36	3.92	3.92	0.00	0.00	0.56	16.74
South America																
Argentina	0.28	0.30	0.30	0.30	2.03	1.87	1.75	1.75	0.57	0.56	0.53	0.53	0.00	0.00	-0.03	-5.58
Brazil	0.52	0.49	0.50	0.50	1.89	2.14	2.40	2.40	0.98	1.04	1.20	1.20	0.00	0.00	0.16	15.16
Chile	0.09	0.10	0.09	0.09	5.39	4.75	5.00	5.00	0.46	0.48	0.45	0.45	0.00	0.00	-0.03	-5.26
Uruguay	0.02	0.03	0.02	0.02	2.44	2.37	2.33	2.33	0.04	0.06	0.04	0.04	0.00	0.00	-0.03	-45.31
Oceania																
Australia	0.68	0.74	0.85	0.85	1.51	1.77	1.76	1.76	1.02	1.32	1.50	1.50	0.00	0.00	0.19	14.07
New Zealand	0.00	0.00	0.01	0.01	7.50	5.75	6.00	6.00	0.03	0.02	0.03	0.03	0.00	0.00	0.01	30.43
China	0.46	0.47	0.47	0.47	1.83	1.83	1.83	1.83	0.84	0.85	0.85	0.85	0.00	0.00	0.00	0.00
Africa																
Algeria	0.08	0.08	0.08	0.08	1.31	1.31	1.31	1.31	0.11	0.11	0.11	0.11	0.00	0.00	0.00	0.00
Morocco	0.02	0.02	0.02	0.02	0.40	0.40	0.40	0.40	0.01	0.01	0.01	0.01	0.00	0.00	0.00	0.00
South Africa	0.03	0.03	0.04	0.04	1.46	1.39	1.71	1.29	0.04	0.04	0.06	0.05	-0.02	-25.00	0.00	4.65
Other Europe																
United Kingdom	0.17	0.20	0.20	0.20	4.97	4.93	5.00	4.82	0.83	0.99	1.00	0.96	-0.04	-3.70	-0.02	-2.33
Norway	0.07	0.07	0.07	0.07	4.29	4.29	4.29	4.29	0.30	0.30	0.30	0.30	0.00	0.00	0.00	0.00
Serbia	0.02	0.02	0.02	0.02	3.00	3.00	3.00	3.00	0.06	0.06	0.06	0.06	0.00	0.00	0.00	0.00
Albania	0.02	0.02	0.02	0.02	2.27	2.27	2.27	2.27	0.03	0.03	0.03	0.03	0.00	0.00	0.00	0.00
Bosnia and Herzegovina	0.01	0.01	0.01	0.01	3.43	3.43	3.38	3.38	0.02	0.02	0.03	0.03	0.00	0.00	0.00	12.50
Turkey	0.13	0.13	0.14	0.14	2.60	2.62	2.59	2.59	0.33	0.34	0.35	0.35	0.00	0.00	0.01	2.94
Mexico	0.03	0.04	0.04	0.04	2.40	2.00	2.00	2.00	0.06	0.08	0.08	0.08	0.00	0.00	0.00	0.00
Others	0.02	0.03	0.03	0.03	1.68	1.78	1.76	1.76	0.04	0.05	0.05	0.05	0.00	0.00	0.00	6.25

World and Selected Countries and Regions

Table 07 Rye Area, Yield, and Production

Country / Region	Area (Million hectares)				Yield (Metric tons per hectare)				Production (Million metric tons)				Change in Production						
	2023/24	Prel.		2025/26 Proj.		2023/24	Prel.		2025/26 Proj.		2023/24	Prel.		2025/26 Proj.		From last month		From last year	
		2024/25	Jan	Feb	2024/25		Jan	Feb	2024/25	Jan		Feb	MMT	Percent	MMT	Percent			
World	3.66	3.36	3.12	3.12	3.21	3.17	3.47	3.47	11.72	10.63	10.84	10.84	0.00	0.00	0.21	1.93			
United States	0.13	0.16	0.14	0.14	2.03	2.29	2.29	2.29	0.26	0.37	0.32	0.32	0.00	0.00	-0.06	-15.51			
Total Foreign	3.53	3.19	2.98	2.98	3.25	3.21	3.53	3.53	11.45	10.26	10.52	10.52	0.00	0.00	0.26	2.56			
European Union	1.88	1.73	1.67	1.67	4.07	3.98	4.31	4.31	7.65	6.89	7.20	7.20	0.00	0.00	0.31	4.44			
Former Soviet Union - 12																			
Russia	0.79	0.58	0.41	0.41	2.15	2.07	2.44	2.44	1.70	1.20	1.00	1.00	0.00	0.00	-0.20	-16.67			
Belarus	0.31	0.34	0.34	0.34	2.52	2.35	2.24	2.24	0.78	0.80	0.76	0.76	0.00	0.00	-0.04	-5.00			
Ukraine	0.08	0.07	0.07	0.07	3.00	3.14	3.15	3.15	0.24	0.22	0.21	0.21	0.00	0.00	-0.02	-6.82			
Kazakhstan	0.02	0.02	0.02	0.02	0.86	1.55	1.20	1.20	0.02	0.03	0.02	0.02	0.00	0.00	-0.01	-41.94			
Turkey	0.11	0.11	0.11	0.11	2.91	2.91	2.86	2.86	0.32	0.32	0.30	0.30	0.00	0.00	-0.02	-6.25			
Canada	0.12	0.12	0.17	0.17	3.09	3.60	4.02	4.02	0.36	0.42	0.68	0.68	0.00	0.00	0.26	62.23			
South America																			
Argentina	0.12	0.13	0.11	0.11	1.85	1.69	1.73	1.73	0.22	0.22	0.19	0.19	0.00	0.00	-0.03	-11.63			
Other Europe																			
Bosnia and Herzegovina	0.00	0.00	0.00	0.00	3.00	3.00	3.00	3.00	0.01	0.01	0.01	0.01	0.00	0.00	0.00	50.00			
Switzerland	0.00	0.00	0.00	0.00	5.00	5.00	5.00	5.00	0.01	0.01	0.01	0.01	0.00	0.00	0.00	0.00			
Serbia	0.01	0.01	0.01	0.01	3.33	3.00	3.00	3.00	0.02	0.02	0.02	0.02	0.00	0.00	0.00	0.00			
Australia	0.05	0.05	0.05	0.05	0.71	0.71	0.71	0.71	0.03	0.03	0.03	0.03	0.00	0.00	0.00	0.00			
Others	0.04	0.04	0.04	0.04	2.32	2.12	2.29	2.29	0.10	0.09	0.09	0.09	0.00	0.00	0.01	5.62			

World and Selected Countries and Regions

Table 08 Sorghum Area, Yield, and Production

Country / Region	Area (Million hectares)				Yield (Metric tons per hectare)				Production (Million metric tons)				Change in Production			
	Prel.		2025/26 Proj.		Prel.		2025/26 Proj.		Prel.		2025/26 Proj.		From last month		From last year	
	2023/24	2024/25	Jan	Feb	2023/24	2024/25	Jan	Feb	2023/24	2024/25	Jan	Feb	MMT	Percent	MMT	Percent
World	39.44	40.41	40.05	40.05	1.49	1.56	1.58	1.58	58.82	63.06	63.20	63.20	0.00	0.00	0.14	0.22
United States	2.48	2.27	2.44	2.44	3.26	3.85	4.56	4.56	8.07	8.73	11.10	11.10	0.00	0.00	2.36	27.04
Total Foreign	36.97	38.14	37.62	37.62	1.37	1.42	1.39	1.39	50.75	54.32	52.10	52.10	0.00	0.00	-2.22	-4.09
Africa																
Nigeria	5.24	5.25	5.32	5.32	1.22	1.22	1.22	1.22	6.40	6.42	6.50	6.50	0.00	0.00	0.08	1.29
Ethiopia	1.48	1.65	1.65	1.65	2.71	2.48	2.48	2.48	4.01	4.10	4.10	4.10	0.00	0.00	0.00	0.00
Sudan	5.99	6.00	6.00	6.00	0.51	0.55	0.55	0.55	3.06	3.30	3.30	3.30	0.00	0.00	0.00	0.00
Burkina Faso	1.79	1.90	1.90	1.90	0.99	1.00	1.00	1.00	1.77	1.90	1.90	1.90	0.00	0.00	0.00	0.00
Mali	1.63	1.50	1.60	1.60	0.94	1.09	0.94	0.94	1.53	1.64	1.50	1.50	0.00	0.00	-0.14	-8.54
Niger	3.70	3.70	3.70	3.70	0.46	0.51	0.52	0.52	1.70	1.90	1.91	1.91	0.00	0.00	0.01	0.37
Cameroon	0.74	0.74	0.74	0.74	1.62	1.62	1.62	1.62	1.20	1.20	1.20	1.20	0.00	0.00	0.00	0.00
Tanzania	0.68	0.75	0.75	0.75	1.08	1.07	1.00	1.00	0.74	0.80	0.75	0.75	0.00	0.00	-0.05	-6.25
Egypt	0.15	0.15	0.15	0.15	5.20	5.27	5.20	5.20	0.78	0.79	0.78	0.78	0.00	0.00	-0.01	-1.27
Uganda	0.32	0.32	0.32	0.32	0.83	0.84	0.84	0.84	0.27	0.27	0.27	0.27	0.00	0.00	0.00	0.00
Ghana	0.31	0.31	0.31	0.31	1.42	1.13	1.21	1.21	0.44	0.35	0.38	0.38	0.00	0.00	0.03	7.14
Mozambique	0.24	0.28	0.28	0.28	0.60	0.33	0.55	0.55	0.14	0.09	0.15	0.15	0.00	0.00	0.06	66.67
South Africa	0.04	0.04	0.04	0.04	2.33	3.63	3.50	3.50	0.10	0.15	0.14	0.14	0.00	0.00	-0.01	-3.45
Mexico	1.30	1.20	1.24	1.24	3.51	3.50	3.47	3.47	4.54	4.20	4.30	4.30	0.00	0.00	0.10	2.38
South America																
Argentina	0.63	0.71	0.78	0.78	3.99	4.02	3.85	3.85	2.50	2.85	3.00	3.00	0.00	0.00	0.15	5.15
Brazil	1.46	1.63	1.55	1.55	3.03	3.74	3.16	3.16	4.43	6.10	4.90	4.90	0.00	0.00	-1.20	-19.70
South Asia																
India	4.08	4.80	4.00	4.00	1.16	1.25	1.15	1.15	4.74	6.00	4.60	4.60	0.00	0.00	-1.40	-23.33
Pakistan	0.05	0.05	0.05	0.05	0.83	0.83	0.82	0.82	0.04	0.04	0.04	0.04	0.00	0.00	0.00	7.89
China	0.63	0.63	0.65	0.65	4.76	4.76	4.77	4.77	3.00	3.00	3.10	3.10	0.00	0.00	0.10	3.33
Australia	0.59	0.59	0.67	0.67	3.74	4.57	3.73	3.73	2.22	2.69	2.50	2.50	0.00	0.00	-0.19	-6.89
European Union	0.15	0.22	0.20	0.20	5.33	4.66	4.67	4.67	0.79	1.02	0.91	0.91	0.00	0.00	-0.11	-10.87
Others	5.78	5.74	5.73	5.73	1.10	0.96	1.03	1.03	6.37	5.52	5.88	5.88	0.00	0.00	0.36	6.47

World and Selected Countries and Regions

Table 09 Rice Area, Yield, and Production
World and Selected Countries and Regions

Country / Region	Area (Million hectares)				Yield (Metric tons per hectare)				Production (Million metric tons)				Change in Production			
	Prel.		2025/26 Proj.		Prel.		2025/26 Proj.		Prel.		2025/26 Proj.		From last month		From last year	
	2023/24	2024/25	Jan	Feb	2023/24	2024/25	Jan	Feb	2023/24	2024/25	Jan	Feb	MMT	Percent	MMT	Percent
World	167.86	172.54	172.15	172.16	4.67	4.69	4.70	4.70	523.97	541.66	541.16	541.28	0.13	0.02	-0.37	-0.07
United States	1.16	1.16	1.11	1.11	8.56	8.69	8.45	8.45	6.92	7.05	6.56	6.56	0.00	0.00	-0.49	-6.95
Total Foreign	166.70	171.38	171.04	171.05	4.64	4.67	4.67	4.67	517.04	534.60	534.59	534.72	0.13	0.02	0.12	0.02
East Asia																
China	28.95	29.01	29.00	29.00	7.14	7.15	7.21	7.21	144.62	145.28	146.33	146.33	0.00	0.00	1.05	0.73
Japan	1.48	1.46	1.48	1.48	6.78	6.87	7.00	7.00	7.30	7.29	7.54	7.54	0.00	0.00	0.25	3.37
Korea, South	0.71	0.70	0.68	0.68	6.92	6.85	6.90	6.90	3.70	3.59	3.54	3.54	0.00	0.00	-0.05	-1.26
Korea, North	0.53	0.54	0.54	0.54	4.18	4.18	4.18	4.18	1.45	1.48	1.48	1.48	0.00	0.00	0.00	0.00
South Asia																
India	47.83	51.42	52.00	52.00	4.32	4.38	4.39	4.39	137.83	150.00	152.00	152.00	0.00	0.00	2.00	1.33
Bangladesh	11.75	11.40	11.75	11.75	4.72	4.82	4.81	4.81	37.00	36.60	37.65	37.65	0.00	0.00	1.05	2.87
Pakistan	3.64	3.90	3.60	3.60	4.07	3.74	3.92	3.92	9.87	9.72	9.40	9.40	0.00	0.00	-0.32	-3.29
Nepal	1.44	1.42	1.46	1.46	3.98	4.19	3.91	3.91	3.81	3.97	3.80	3.80	0.00	0.00	-0.17	-4.21
Sri Lanka	1.14	1.13	1.15	1.15	3.97	4.18	4.22	4.22	3.09	3.21	3.30	3.30	0.00	0.00	0.09	2.77
Southeast Asia																
Indonesia	11.00	11.40	11.30	11.30	4.73	4.71	4.68	4.68	33.02	34.10	33.60	33.60	0.00	0.00	-0.50	-1.47
Vietnam	7.11	6.95	6.80	6.80	6.12	6.16	6.12	6.12	27.20	26.75	26.00	26.00	0.00	0.00	-0.75	-2.80
Thailand	10.65	11.08	10.80	10.80	2.85	2.85	2.86	2.86	20.00	20.84	20.40	20.40	0.00	0.00	-0.44	-2.13
Burma	6.80	6.86	6.80	6.80	2.83	2.71	2.76	2.76	12.30	11.90	12.00	12.00	0.00	0.00	0.10	0.84
Philippines	4.74	4.70	4.70	4.70	4.12	4.18	4.15	4.15	12.33	12.37	12.30	12.30	0.00	0.00	-0.07	-0.57
Cambodia	3.80	3.86	3.80	3.80	3.47	3.61	3.49	3.54	8.05	8.50	8.10	8.20	0.10	1.23	-0.30	-3.53
Laos	0.99	0.95	0.96	0.96	3.21	3.17	3.22	3.22	2.01	1.90	1.95	1.95	0.00	0.00	0.05	2.63
Malaysia	0.59	0.61	0.59	0.59	3.91	3.97	3.91	3.91	1.50	1.58	1.50	1.50	0.00	0.00	-0.08	-4.76
South America																
Brazil	1.61	1.76	1.60	1.60	6.58	7.23	6.99	6.99	7.20	8.68	7.60	7.60	0.00	0.00	-1.08	-12.39
Peru	0.42	0.43	0.43	0.43	8.10	8.21	8.76	8.76	2.33	2.46	2.60	2.60	0.00	0.00	0.14	5.82
Africa																
Egypt	0.63	0.67	0.72	0.72	8.70	8.44	8.45	8.45	3.78	3.90	4.20	4.20	0.00	0.00	0.30	7.69
Madagascar	1.90	1.90	1.75	1.75	2.70	2.74	2.40	2.40	3.28	3.33	2.69	2.69	0.00	0.00	-0.64	-19.23
Nigeria	4.51	4.50	4.50	4.50	1.97	2.03	1.96	1.96	5.61	5.77	5.54	5.54	0.00	0.00	-0.22	-3.83
European Union	0.35	0.39	0.42	0.42	6.55	6.73	6.66	6.71	1.37	1.60	1.77	1.77	0.00	0.00	0.18	10.97
Iran	0.57	0.57	0.57	0.57	5.30	5.32	5.32	5.32	2.00	2.00	2.00	2.00	0.00	0.00	0.00	0.00
Others	13.57	13.75	13.64	13.65	2.96	3.07	3.04	3.04	26.42	27.82	27.30	27.33	0.03	0.10	-0.49	-1.74

Yield is on a rough basis, before the milling process. Production is on a milled basis, after the milling process.

Table 10 Total Oilseed Area, Yield, and Production

World and Selected Countries and Regions

Country / Region	Area (Million hectares)				Yield (Metric tons per hectare)				Production (Million metric tons)				Change in Production			
	2023/24	Prel.	2025/26 Proj.		2023/24	Prel.	2025/26 Proj.		2023/24	Prel.	2025/26 Proj.		From last month		From last year	
		2024/25	Jan	Feb		2024/25	Jan	Feb		2024/25	Jan	Feb	MMT	Percent	MMT	Percent
World Total	--	--	--	--	--	--	--	--	657.38	684.91	693.15	695.78	2.63	0.38	10.86	1.59
Total Foreign	--	--	--	--	--	--	--	--	535.21	556.32	566.91	569.54	2.63	0.46	13.22	2.38
Oilseed, Copra	--	--	--	--	--	--	--	--	6.20	5.79	5.87	5.86	-0.01	-0.22	0.07	1.21
Oilseed, Palm Kernel	--	--	--	--	--	--	--	--	19.61	20.29	20.86	21.01	0.15	0.74	0.72	3.57
Major Oilseeds	272.24	277.35	276.29	276.54	2.32	2.38	2.41	2.42	631.57	658.84	666.42	668.91	2.49	0.37	10.07	1.53
United States	37.98	40.13	37.93	37.93	3.22	3.20	3.33	3.33	122.16	128.59	126.24	126.24	0.00	0.00	-2.36	-1.83
Foreign Oilseeds	234.26	237.22	238.36	238.61	2.17	2.24	2.27	2.27	509.41	530.25	540.18	542.67	2.49	0.46	12.43	2.34
South America	74.75	78.31	79.41	79.68	3.12	3.28	3.28	3.30	232.89	256.63	260.79	263.26	2.47	0.95	6.63	2.58
Brazil	48.13	49.69	51.55	51.85	3.33	3.59	3.60	3.62	160.14	178.40	185.48	187.48	2.00	1.08	9.07	5.08
Argentina	19.30	21.04	20.16	20.13	2.81	2.81	2.78	2.78	54.24	59.10	56.08	56.05	-0.03	-0.05	-3.05	-5.16
Paraguay	3.90	3.92	3.97	3.97	2.88	2.67	2.84	2.96	11.22	10.44	11.25	11.75	0.50	4.44	1.31	12.55
Bolivia	1.90	2.13	2.15	2.15	1.85	1.90	1.98	1.98	3.52	4.04	4.25	4.25	0.00	0.00	0.21	5.20
Uruguay	1.44	1.43	1.49	1.49	2.44	3.04	2.30	2.30	3.51	4.35	3.42	3.42	0.00	0.00	-0.93	-21.39
China	26.22	26.08	26.43	26.43	2.55	2.60	2.63	2.63	66.92	67.81	69.44	69.61	0.17	0.24	1.79	2.65
South Asia	44.54	42.88	42.09	42.09	1.03	1.07	1.06	1.06	45.84	45.71	44.78	44.78	0.00	0.00	-0.92	-2.02
India	40.28	39.06	38.23	38.23	1.00	1.05	1.05	1.05	40.37	41.16	40.09	40.09	0.00	0.00	-1.07	-2.61
Pakistan	3.01	2.61	2.59	2.59	1.25	1.11	1.13	1.13	3.75	2.89	2.94	2.94	0.00	0.00	0.05	1.56
European Union	12.22	11.96	12.01	12.01	2.75	2.39	2.66	2.66	33.64	28.59	31.99	31.99	0.00	0.00	3.40	11.88
United Kingdom	0.39	0.29	0.24	0.24	3.11	2.81	3.75	3.75	1.22	0.82	0.90	0.90	0.00	0.00	0.08	9.22
Former Soviet Union - 12	29.07	31.27	32.42	32.37	2.04	1.88	1.82	1.82	59.20	58.92	59.03	58.88	-0.15	-0.25	-0.04	-0.07
Russia	14.85	16.45	17.70	17.70	1.89	1.74	1.79	1.79	28.10	28.60	31.60	31.60	0.00	0.00	3.00	10.49
Ukraine	10.00	10.35	9.50	9.50	2.55	2.32	2.12	2.12	25.45	24.00	20.10	20.10	0.00	0.00	-3.90	-16.25
Uzbekistan	1.04	1.02	0.95	0.95	1.13	1.20	1.11	1.11	1.18	1.23	1.06	1.06	0.00	0.00	-0.17	-14.01
Canada	11.16	11.16	11.05	11.05	2.38	2.41	2.61	2.61	26.54	26.86	28.86	28.86	0.00	0.00	2.00	7.46
Africa	25.82	25.10	24.64	24.67	0.96	1.03	1.04	1.04	24.69	25.97	25.63	25.64	0.01	0.02	-0.33	-1.29
Nigeria	5.90	6.02	6.06	6.06	1.10	1.10	1.14	1.14	6.47	6.64	6.89	6.89	0.00	0.00	0.26	3.86
South Africa	1.87	1.93	1.95	1.98	1.51	2.01	1.93	1.90	2.82	3.88	3.75	3.76	0.01	0.16	-0.12	-3.09
Tanzania	1.13	1.39	1.39	1.39	0.70	0.66	0.67	0.67	0.79	0.91	0.93	0.93	0.00	0.00	0.02	2.41
Southeast Asia	3.07	3.04	3.01	3.01	1.39	1.39	1.39	1.39	4.27	4.24	4.20	4.20	0.00	0.00	-0.05	-1.06
Burma	1.97	1.98	1.98	1.98	1.24	1.27	1.27	1.27	2.45	2.52	2.52	2.52	0.00	0.00	0.01	0.20
Indonesia	0.84	0.81	0.78	0.78	1.49	1.46	1.45	1.45	1.26	1.18	1.13	1.13	0.00	0.00	-0.05	-4.23
Australia	4.07	4.10	4.13	4.13	1.82	1.93	2.04	2.04	7.42	7.90	8.43	8.43	0.00	0.00	0.53	6.72
Turkey	1.27	1.29	1.29	1.29	2.43	2.45	2.22	2.22	3.08	3.15	2.85	2.85	0.00	0.00	-0.30	-9.41
Others	1.69	1.74	1.64	1.64	2.20	2.10	2.00	2.00	3.72	3.65	3.28	3.28	-0.01	-0.15	-0.37	-10.07

World Total and Total Foreign: (Major Oilseeds plus copra and palm kernel) Major Oilseeds: (soybeans, sunflowerseeds, peanuts(inshell), cottonseed and rapeseed)

Table 11 Soybean Area, Yield, and Production

Country / Region	Area (Million hectares)				Yield (Metric tons per hectare)				Production (Million metric tons)				Change in Production			
	2023/24	Prel.	2025/26 Proj.		2023/24	Prel.	2025/26 Proj.		2023/24	Prel.	2025/26 Proj.		From last month		From last year	
		2024/25	Jan	Feb		2024/25	Jan	Feb		2024/25	Jan	Feb	MMT	Percent	MMT	Percent
World	140.66	146.53	143.78	144.08	2.82	2.92	2.96	2.97	396.35	427.15	425.68	428.18	2.50	0.59	1.03	0.24
United States	33.29	34.89	32.55	32.55	3.40	3.41	3.56	3.56	113.27	119.05	115.99	115.99	0.00	0.00	-3.06	-2.57
Total Foreign	107.37	111.64	111.22	111.53	2.64	2.76	2.78	2.80	283.08	308.11	309.69	312.19	2.50	0.81	4.08	1.33
South America																
Brazil	46.15	47.40	49.10	49.40	3.35	3.62	3.63	3.64	154.50	171.50	178.00	180.00	2.00	1.12	8.50	4.96
Argentina	16.37	17.46	16.50	16.50	2.95	2.93	2.94	2.94	48.21	51.11	48.50	48.50	0.00	0.00	-2.61	-5.10
Paraguay	3.75	3.75	3.80	3.80	2.93	2.72	2.89	3.03	11.00	10.20	11.00	11.50	0.50	4.55	1.30	12.75
Bolivia	1.69	1.88	1.90	1.90	1.91	1.97	2.05	2.05	3.22	3.70	3.90	3.90	0.00	0.00	0.20	5.41
Uruguay	1.31	1.35	1.30	1.30	2.51	3.12	2.38	2.38	3.29	4.20	3.10	3.10	0.00	0.00	-1.10	-26.19
East Asia																
China	10.47	10.33	10.30	10.30	1.99	2.00	2.03	2.03	20.84	20.65	20.90	20.90	0.00	0.00	0.25	1.21
Korea, South	0.07	0.07	0.08	0.08	2.07	2.09	2.03	2.03	0.14	0.16	0.16	0.16	0.00	0.00	0.01	3.23
Korea, North	0.16	0.16	0.16	0.16	1.15	1.15	1.15	1.15	0.18	0.18	0.18	0.18	0.00	0.00	0.00	0.00
Japan	0.16	0.15	0.16	0.16	1.59	1.77	1.61	1.61	0.25	0.27	0.25	0.25	0.00	0.00	-0.02	-8.42
India	13.20	13.00	12.00	12.00	0.90	0.97	0.88	0.88	11.88	12.58	10.50	10.50	0.00	0.00	-2.08	-16.55
Canada	2.26	2.29	2.32	2.32	3.09	3.30	2.93	2.93	6.98	7.57	6.79	6.79	0.00	0.00	-0.78	-10.24
Former Soviet Union - 12																
Russia	3.50	4.20	4.50	4.50	1.94	1.68	2.00	2.00	6.80	7.05	9.00	9.00	0.00	0.00	1.95	27.66
Ukraine	2.00	3.00	2.50	2.50	2.60	2.40	2.40	2.40	5.20	7.20	6.00	6.00	0.00	0.00	-1.20	-16.67
European Union	1.02	1.13	1.07	1.07	2.76	2.60	2.60	2.60	2.81	2.93	2.79	2.79	0.00	0.00	-0.15	-4.95
Southeast Asia																
Indonesia	0.32	0.31	0.29	0.29	1.17	1.13	1.10	1.10	0.38	0.35	0.32	0.32	0.00	0.00	-0.03	-8.57
Vietnam	0.03	0.03	0.03	0.03	1.67	1.62	1.62	1.62	0.05	0.04	0.04	0.04	0.00	0.00	0.00	0.00
Thailand	0.03	0.03	0.03	0.03	1.63	1.63	1.63	1.63	0.05	0.05	0.05	0.05	0.00	0.00	0.00	0.00
Burma	0.12	0.12	0.12	0.12	1.13	1.22	1.22	1.22	0.14	0.14	0.14	0.14	0.00	0.00	0.00	0.00
Serbia	0.24	0.24	0.18	0.18	2.77	2.00	1.67	1.67	0.65	0.47	0.30	0.30	0.00	0.00	-0.17	-36.17
Mexico	0.09	0.14	0.15	0.15	2.19	2.06	1.93	1.93	0.20	0.28	0.28	0.28	0.00	0.00	0.00	0.72
Africa																
South Africa	1.15	1.15	1.18	1.19	1.61	2.41	2.20	2.19	1.85	2.77	2.60	2.60	0.00	0.00	-0.17	-6.17
Nigeria	1.20	1.35	1.40	1.40	1.13	1.04	1.07	1.07	1.35	1.40	1.50	1.50	0.00	0.00	0.10	7.14
Zambia	0.60	0.59	0.59	0.59	1.26	1.31	1.31	1.31	0.76	0.77	0.77	0.77	0.00	0.00	0.00	0.00
Uganda	0.21	0.21	0.21	0.21	0.71	0.71	0.71	0.71	0.15	0.15	0.15	0.15	0.00	0.00	0.00	0.00
Middle East																
Iran	0.07	0.07	0.07	0.07	2.36	2.43	2.43	2.43	0.17	0.17	0.17	0.17	0.00	0.00	0.00	0.00
Turkey	0.04	0.04	0.04	0.04	4.00	3.95	3.95	3.95	0.14	0.15	0.15	0.15	0.00	0.00	0.00	0.00
Others	1.18	1.22	1.27	1.27	1.63	1.69	1.70	1.70	1.91	2.07	2.15	2.15	0.00	0.00	0.08	3.87

World and Selected Countries and Regions

Table 12 Cottonseed Area, Yield, and Production

Country / Region	Area (Million hectares)				Yield (Metric tons per hectare)				Production (Million metric tons)				Change in Production			
	2023/24	Prel.	2025/26 Proj.		2023/24	Prel.	2025/26 Proj.		2023/24	Prel.	2025/26 Proj.		From last month		From last year	
		2024/25	Jan	Feb		2024/25	Jan	Feb		2024/25	Jan	Feb	MMT	Percent	MMT	Percent
World	30.40	29.54	28.93	28.90	1.30	1.38	1.43	1.43	39.48	40.82	41.29	41.42	0.14	0.33	0.60	1.48
United States	2.61	3.16	3.16	3.16	1.27	1.22	1.21	1.21	3.31	3.87	3.81	3.81	0.00	0.00	-0.05	-1.35
Total Foreign	27.80	26.38	25.77	25.74	1.30	1.40	1.45	1.46	36.17	36.95	37.47	37.61	0.14	0.37	0.66	1.78
South Asia																
India	12.68	11.48	11.20	11.20	0.85	0.86	0.89	0.89	10.78	9.85	9.98	9.98	0.00	0.00	0.13	1.30
Pakistan	2.40	2.00	1.95	1.95	1.26	1.08	1.11	1.11	3.03	2.17	2.17	2.17	0.00	0.00	0.00	0.00
China	2.85	2.90	3.05	3.05	3.18	3.66	3.75	3.80	9.07	10.61	11.44	11.61	0.17	1.44	0.99	9.37
Former Soviet Union - 12																
Uzbekistan	1.03	1.00	0.93	0.93	1.10	1.18	1.07	1.07	1.14	1.18	1.00	1.00	0.00	0.00	-0.18	-14.98
Turkmenistan	0.50	0.50	0.52	0.52	0.63	0.63	0.64	0.64	0.31	0.31	0.33	0.33	0.00	0.00	0.02	6.39
Tajikistan	0.17	0.18	0.18	0.18	1.13	1.08	1.15	1.15	0.19	0.20	0.21	0.21	0.00	0.00	0.01	6.15
Kazakhstan	0.12	0.11	0.14	0.14	1.00	0.97	0.91	0.91	0.12	0.10	0.13	0.13	0.00	0.00	0.02	23.30
South America																
Brazil	1.66	1.95	2.10	2.10	2.91	2.90	2.96	2.96	4.84	5.64	6.23	6.23	0.00	0.00	0.58	10.29
Argentina	0.62	0.62	0.53	0.50	0.98	0.85	1.01	1.02	0.61	0.53	0.54	0.51	-0.03	-5.22	-0.02	-3.97
Middle East																
Turkey	0.44	0.47	0.40	0.40	2.37	2.77	2.48	2.48	1.04	1.29	0.98	0.98	0.00	0.00	-0.31	-24.11
Syria	0.03	0.03	0.03	0.03	2.23	2.23	2.23	2.23	0.07	0.07	0.07	0.07	0.00	0.00	0.00	0.00
Iran	0.10	0.10	0.10	0.10	1.18	1.35	1.35	1.35	0.12	0.14	0.14	0.14	0.00	0.00	0.00	0.00
Australia	0.51	0.60	0.47	0.47	2.48	2.34	2.40	2.40	1.25	1.40	1.13	1.13	0.00	0.00	-0.28	-19.67
European Union	0.25	0.28	0.26	0.26	1.35	1.44	1.49	1.49	0.34	0.40	0.39	0.39	0.00	0.00	-0.02	-3.75
Africa																
Burkina Faso	0.46	0.35	0.39	0.39	0.46	0.44	0.45	0.45	0.21	0.15	0.18	0.18	0.00	0.00	0.02	15.13
Mali	0.71	0.62	0.53	0.53	0.53	0.57	0.43	0.43	0.38	0.36	0.23	0.23	0.00	0.00	-0.13	-35.20
Cameroon	0.24	0.23	0.20	0.20	1.54	1.18	1.33	1.33	0.37	0.27	0.27	0.27	0.00	0.00	-0.01	-1.85
Cote d'Ivoire	0.40	0.36	0.29	0.29	0.44	0.44	0.51	0.51	0.17	0.16	0.15	0.15	0.00	0.00	-0.01	-5.70
Benin	0.51	0.54	0.51	0.51	0.73	0.74	0.75	0.75	0.37	0.40	0.38	0.38	0.00	0.00	-0.02	-4.28
Tanzania	0.47	0.44	0.44	0.44	0.44	0.35	0.40	0.40	0.21	0.15	0.17	0.17	0.00	0.00	0.02	14.47
Egypt	0.10	0.13	0.08	0.08	0.96	0.99	0.99	0.99	0.10	0.13	0.08	0.08	0.00	0.00	-0.05	-38.76
Nigeria	0.27	0.27	0.27	0.27	0.56	0.56	0.56	0.56	0.15	0.15	0.15	0.15	0.00	0.00	0.00	0.00
Uganda	0.06	0.07	0.07	0.07	1.51	1.48	1.20	1.20	0.08	0.10	0.08	0.08	0.00	0.00	-0.02	-18.75
Zimbabwe	0.24	0.24	0.24	0.24	0.34	0.34	0.35	0.35	0.08	0.08	0.09	0.09	0.00	0.00	0.00	3.66
Sudan	0.08	0.07	0.07	0.07	1.36	1.09	1.09	1.09	0.10	0.08	0.08	0.08	0.00	0.00	0.00	0.00
Mexico	0.13	0.13	0.08	0.07	2.25	2.70	2.64	2.68	0.30	0.34	0.20	0.19	-0.01	-2.53	-0.15	-43.24
Burma	0.18	0.19	0.19	0.19	1.24	1.24	1.25	1.25	0.23	0.24	0.23	0.23	0.00	0.00	-0.01	-2.12
Others	0.61	0.55	0.57	0.57	0.86	0.87	0.88	0.88	0.52	0.48	0.50	0.50	0.01	1.21	0.03	5.24

World and Selected Countries and Regions

Table 13 Peanut Area, Yield, and Production

Country / Region	Area (Million hectares)				Yield (Metric tons per hectare)				Production (Million metric tons)				Change in Production						
	2023/24	Prel.		2025/26 Proj.		2023/24	Prel.		2025/26 Proj.		2023/24	Prel.		2025/26 Proj.		From last month		From last year	
		2024/25	Jan	Feb	2024/25		Jan	Feb	2024/25	Jan		Feb	MMT	Percent	MMT	Percent			
World	30.40	30.48	30.21	30.20	1.64	1.71	1.73	1.73	49.84	52.06	52.23	52.23	0.00	0.00	0.17	0.32			
United States	0.63	0.71	0.77	0.77	4.23	4.17	4.22	4.22	2.67	2.94	3.26	3.26	0.00	0.00	0.31	10.67			
Total Foreign	29.77	29.77	29.44	29.43	1.58	1.65	1.66	1.66	47.17	49.12	48.97	48.97	0.00	0.00	-0.15	-0.30			
China	4.80	4.85	4.86	4.86	4.01	3.92	3.91	3.91	19.23	19.00	19.00	19.00	0.00	0.00	0.00	0.00			
Africa																			
Nigeria	4.43	4.40	4.39	4.39	1.12	1.16	1.19	1.19	4.97	5.09	5.24	5.24	0.00	0.00	0.16	3.07			
Sudan	3.01	2.43	2.00	2.00	0.46	0.69	0.50	0.50	1.39	1.68	1.00	1.00	0.00	0.00	-0.68	-40.62			
Senegal	0.83	0.78	0.87	0.87	1.27	1.02	1.32	1.32	1.06	0.80	1.15	1.15	0.00	0.00	0.35	44.47			
Cameroon	0.50	0.50	0.50	0.50	1.40	1.40	1.40	1.40	0.70	0.70	0.70	0.70	0.00	0.00	0.00	0.00			
Ghana	0.37	0.37	0.37	0.37	1.72	1.69	1.62	1.62	0.64	0.63	0.60	0.60	0.00	0.00	-0.03	-4.00			
Chad	0.75	0.75	0.75	0.75	1.04	0.92	1.00	1.00	0.78	0.69	0.75	0.75	0.00	0.00	0.06	8.23			
Malawi	0.40	0.40	0.40	0.40	0.88	0.88	0.88	0.88	0.35	0.35	0.35	0.35	0.00	0.00	0.00	0.00			
Congo (Kinshasa)	0.51	0.52	0.52	0.52	0.97	0.93	0.93	0.93	0.50	0.48	0.48	0.48	0.00	0.00	0.00	0.00			
Niger	1.02	1.03	1.03	1.03	0.55	0.65	0.63	0.63	0.56	0.67	0.65	0.65	0.00	0.00	-0.02	-3.56			
Mali	0.50	0.50	0.50	0.50	0.92	1.00	0.92	0.92	0.46	0.50	0.46	0.46	0.00	0.00	-0.04	-8.45			
Uganda	0.33	0.33	0.33	0.33	0.42	0.53	0.53	0.53	0.14	0.18	0.18	0.18	0.00	0.00	0.00	0.00			
Burkina Faso	0.75	0.75	0.75	0.75	0.91	0.91	0.91	0.91	0.68	0.68	0.68	0.68	0.00	0.00	0.00	0.00			
Guinea	0.90	0.88	0.88	0.88	1.11	1.14	1.14	1.14	1.00	1.00	1.00	1.00	0.00	0.00	0.00	0.00			
Egypt	0.06	0.06	0.06	0.06	3.20	3.20	3.20	3.20	0.21	0.21	0.21	0.21	0.00	0.00	0.00	0.00			
Central African Republic	0.20	0.23	0.23	0.23	2.97	2.44	2.44	2.44	0.59	0.55	0.55	0.55	0.00	0.00	0.00	0.00			
South Africa	0.04	0.05	0.05	0.05	1.68	1.77	1.90	2.11	0.07	0.09	0.10	0.10	0.00	0.00	0.01	11.76			
Mozambique	0.58	0.45	0.45	0.45	0.39	0.39	0.39	0.39	0.23	0.18	0.18	0.18	0.00	0.00	0.00	0.00			
Cote d'Ivoire	0.17	0.17	0.17	0.17	1.45	1.45	1.45	1.45	0.24	0.24	0.24	0.24	0.00	0.00	0.00	0.00			
Benin	0.24	0.22	0.22	0.22	0.74	1.00	1.00	1.00	0.18	0.22	0.22	0.22	0.00	0.00	0.00	-0.45			
South Asia																			
India	5.00	5.50	5.60	5.60	1.20	1.29	1.34	1.34	6.00	7.10	7.50	7.50	0.00	0.00	0.40	5.63			
Pakistan	0.14	0.14	0.14	0.14	0.85	0.90	0.89	0.89	0.12	0.13	0.12	0.12	0.00	0.00	-0.01	-7.69			
Southeast Asia																			
Indonesia	0.52	0.50	0.49	0.49	1.69	1.66	1.65	1.65	0.88	0.83	0.81	0.81	0.00	0.00	-0.02	-2.41			
Burma	1.07	1.08	1.08	1.08	1.59	1.63	1.63	1.63	1.70	1.75	1.76	1.76	0.00	0.00	0.01	0.57			
Vietnam	0.15	0.14	0.14	0.14	2.66	2.66	2.66	2.66	0.39	0.38	0.38	0.38	0.00	0.00	0.00	0.00			
Thailand	0.02	0.02	0.02	0.02	1.67	1.67	1.67	1.67	0.04	0.04	0.04	0.04	0.00	0.00	0.00	0.00			
South America																			
Argentina	0.43	0.53	0.45	0.45	3.43	3.40	3.33	3.33	1.48	1.81	1.50	1.50	0.00	0.00	-0.31	-17.13			
Brazil	0.26	0.28	0.28	0.28	2.88	4.14	4.11	4.11	0.73	1.16	1.15	1.15	0.00	0.00	-0.01	-0.86			
Mexico	0.05	0.05	0.05	0.05	1.98	1.70	1.75	1.75	0.09	0.09	0.08	0.08	0.00	0.00	0.00	-1.18			
Others	1.75	1.87	1.87	1.87	1.02	1.03	1.02	1.02	1.78	1.92	1.91	1.91	0.00	0.00	-0.01	-0.47			

Table 14 Sunflowerseed Area, Yield, and Production

Country / Region	Area (Million hectares)				Yield (Metric tons per hectare)				Production (Million metric tons)				Change in Production						
	2023/24	Prel.		2025/26 Proj.		2023/24	Prel.		2025/26 Proj.		2023/24	Prel.		2025/26 Proj.		From last month		From last year	
		2024/25	Jan	Feb	2024/25		Jan	Feb	2024/25	Jan		Feb	MMT	Percent	MMT	Percent			
World	27.80	28.32	29.52	29.55	2.01	1.86	1.76	1.76	55.93	52.81	52.06	52.06	0.00	0.00	-0.75	-1.42			
United States	0.51	0.28	0.50	0.50	2.00	1.87	2.09	2.09	1.02	0.52	1.05	1.05	0.00	0.00	0.54	103.28			
Total Foreign	27.29	28.05	29.01	29.04	2.01	1.86	1.76	1.76	54.91	52.29	51.00	51.00	0.00	0.00	-1.28	-2.45			
Former Soviet Union - 12																			
Russia	9.30	9.60	10.30	10.30	1.84	1.76	1.65	1.65	17.10	16.90	17.00	17.00	0.00	0.00	0.10	0.59			
Ukraine	6.40	6.00	5.60	5.60	2.42	2.17	1.88	1.88	15.50	13.00	10.50	10.50	0.00	0.00	-2.50	-19.23			
Kazakhstan	1.13	1.26	1.75	1.75	1.10	1.46	1.37	1.37	1.24	1.83	2.40	2.40	0.00	0.00	0.57	30.86			
European Union	4.69	4.84	4.59	4.59	2.14	1.74	1.87	1.87	10.05	8.44	8.58	8.58	0.00	0.00	0.14	1.65			
South America																			
Argentina	1.84	2.40	2.65	2.65	2.11	2.33	2.08	2.08	3.90	5.59	5.50	5.50	0.00	0.00	-0.09	-1.65			
Uruguay	0.00	0.01	0.01	0.01	1.25	1.86	1.20	1.20	0.01	0.01	0.01	0.01	0.00	0.00	0.00	-7.69			
Bolivia	0.22	0.25	0.25	0.25	1.40	1.36	1.40	1.40	0.30	0.34	0.35	0.35	0.00	0.00	0.01	2.94			
Brazil	0.06	0.06	0.07	0.07	1.18	1.61	1.54	1.54	0.07	0.10	0.10	0.10	0.00	0.00	0.00	0.00			
Paraguay	0.02	0.03	0.03	0.03	1.63	1.60	1.60	1.60	0.04	0.04	0.04	0.04	0.00	0.00	0.00	0.00			
China	0.70	0.60	0.72	0.72	2.83	2.92	2.92	2.92	1.98	1.75	2.10	2.10	0.00	0.00	0.35	20.00			
South Asia																			
India	0.15	0.18	0.18	0.18	0.75	0.63	0.63	0.63	0.11	0.11	0.11	0.11	0.00	0.00	0.00	0.00			
Pakistan	0.08	0.07	0.07	0.07	1.35	1.32	1.32	1.32	0.11	0.09	0.09	0.09	0.00	0.00	0.00	0.00			
Middle East																			
Turkey	0.70	0.69	0.76	0.76	2.21	1.96	1.80	1.80	1.55	1.35	1.37	1.37	0.00	0.00	0.02	1.48			
Iran	0.04	0.04	0.04	0.04	1.05	1.07	1.07	1.07	0.04	0.05	0.05	0.05	0.00	0.00	0.00	0.00			
Israel	0.00	0.00	0.00	0.00	2.00	4.00	4.00	4.00	0.00	0.00	0.00	0.00	0.00	0.00	0.00	0.00			
Africa																			
Egypt	0.02	0.02	0.02	0.02	2.50	2.50	2.50	2.50	0.05	0.05	0.05	0.05	0.00	0.00	0.00	0.00			
Morocco	0.02	0.02	0.02	0.02	1.27	1.17	1.17	1.17	0.03	0.03	0.03	0.03	0.00	0.00	0.00	0.00			
South Africa	0.53	0.56	0.53	0.56	1.19	1.27	1.36	1.29	0.63	0.71	0.72	0.72	0.00	0.00	0.01	1.69			
Burma	0.60	0.60	0.60	0.60	0.65	0.65	0.65	0.65	0.39	0.39	0.39	0.39	0.00	0.00	0.00	0.00			
Canada	0.04	0.02	0.03	0.03	2.30	2.13	2.38	2.38	0.09	0.05	0.07	0.07	0.00	0.00	0.02	35.29			
Australia	0.02	0.02	0.02	0.02	1.52	1.59	1.50	1.50	0.03	0.04	0.03	0.03	0.00	0.00	0.00	-5.71			
Others	0.73	0.78	0.78	0.78	2.33	1.82	1.95	1.95	1.69	1.42	1.52	1.52	0.00	0.00	0.10	6.82			

World and Selected Countries and Regions

Table 15 Rapeseed Area, Yield, and Production

Country / Region	Area (Million hectares)				Yield (Metric tons per hectare)				Production (Million metric tons)				Change in Production						
	2023/24	Prel.		2025/26 Proj.		2023/24	Prel.		2025/26 Proj.		2023/24	Prel.		2025/26 Proj.		From last month		From last year	
		2024/25	Jan	Feb	2024/25		Jan	Feb	2024/25	Jan		Feb	MMT	Percent	MMT	Percent			
World	42.98	42.48	43.86	43.81	2.09	2.02	2.17	2.17	89.97	86.00	95.17	95.02	-0.15	-0.16	9.02	10.49			
United States	0.94	1.11	0.94	0.94	2.01	2.01	2.26	2.26	1.90	2.22	2.13	2.13	0.00	0.00	-0.09	-4.23			
Total Foreign	42.04	41.37	42.92	42.87	2.10	2.02	2.17	2.17	88.08	83.78	93.05	92.90	-0.15	-0.16	9.12	10.88			
European Union	6.26	5.71	6.09	6.09	3.26	2.94	3.33	3.33	20.43	16.83	20.25	20.25	0.00	0.00	3.42	20.31			
United Kingdom	0.39	0.29	0.24	0.24	3.11	2.81	3.75	3.75	1.22	0.82	0.90	0.90	0.00	0.00	0.08	9.22			
Switzerland	0.03	0.03	0.03	0.03	3.52	3.52	3.52	3.52	0.09	0.09	0.09	0.09	0.00	0.00	0.00	0.00			
Canada	8.86	8.85	8.70	8.70	2.20	2.17	2.53	2.53	19.46	19.24	22.00	22.00	0.00	0.00	2.76	14.35			
China	7.40	7.40	7.50	7.50	2.14	2.14	2.13	2.13	15.80	15.80	16.00	16.00	0.00	0.00	0.20	1.27			
South Asia																			
India	9.25	8.90	9.25	9.25	1.25	1.29	1.30	1.30	11.60	11.52	12.00	12.00	0.00	0.00	0.48	4.17			
Pakistan	0.38	0.40	0.44	0.44	1.28	1.28	1.28	1.28	0.49	0.51	0.57	0.57	0.00	0.00	0.06	10.78			
Bangladesh	1.10	1.04	1.10	1.10	1.30	1.30	1.32	1.32	1.43	1.35	1.45	1.45	0.00	0.00	0.10	7.41			
Former Soviet Union - 12																			
Russia	2.05	2.65	2.90	2.90	2.05	1.75	1.93	1.93	4.20	4.65	5.60	5.60	0.00	0.00	0.95	20.43			
Ukraine	1.60	1.35	1.40	1.40	2.97	2.81	2.57	2.57	4.75	3.80	3.60	3.60	0.00	0.00	-0.20	-5.26			
Belarus	0.40	0.48	0.50	0.45	2.25	2.25	2.20	2.11	0.90	1.08	1.10	0.95	-0.15	-13.64	-0.13	-12.04			
Kazakhstan	0.09	0.15	0.33	0.33	1.32	1.92	1.54	1.54	0.12	0.29	0.50	0.50	0.00	0.00	0.21	74.83			
Australia	3.51	3.44	3.60	3.60	1.73	1.86	2.00	2.00	6.05	6.40	7.20	7.20	0.00	0.00	0.80	12.57			
South America																			
Chile	0.03	0.04	0.04	0.04	4.39	3.86	4.00	4.00	0.12	0.14	0.14	0.14	0.00	0.00	0.01	3.70			
Paraguay	0.07	0.08	0.08	0.08	1.50	1.53	1.56	1.56	0.11	0.12	0.13	0.13	0.00	0.00	0.01	8.70			
Ethiopia	0.03	0.03	0.03	0.03	1.80	1.80	1.80	1.80	0.05	0.05	0.05	0.05	0.00	0.00	0.00	0.00			
Others	0.60	0.55	0.71	0.71	2.11	2.01	2.09	2.09	1.27	1.11	1.49	1.49	0.00	0.00	0.38	33.69			

World and Selected Countries and Regions

Table 16 Copra, Palm Kernel, and Palm Oil Production

Country / Region	Production (Million metric tons)				Change in Production			
	2023/24	Prel.	2025/26 Proj.		From last month		From last year	
		2024/25	Jan	Feb	MMT	Percent	MMT	Percent
Oilseed, Copra								
Philippines	2.90	2.56	2.60	2.60	0.00	0.00	0.04	1.56
Indonesia	1.69	1.61	1.64	1.64	0.00	0.00	0.03	1.86
India	0.94	0.94	0.94	0.94	0.00	0.00	0.00	0.00
Vietnam	0.29	0.29	0.29	0.29	0.00	0.00	0.00	0.00
Papua New Guinea	0.09	0.10	0.10	0.10	0.00	0.00	0.00	0.00
Sri Lanka	0.07	0.07	0.07	0.07	0.00	0.00	0.00	0.00
Thailand	0.07	0.07	0.07	0.07	0.00	0.00	0.00	0.00
Mexico	0.05	0.05	0.05	0.05	0.00	0.00	0.00	0.00
Cote d'Ivoire	0.03	0.03	0.03	0.03	0.00	0.00	0.00	0.00
Malaysia	0.03	0.03	0.03	0.03	0.00	0.00	0.00	0.00
World	6.20	5.79	5.87	5.86	-0.01	-0.17	0.08	1.38
Oilseed, Palm Kernel								
Indonesia	11.00	11.90	12.30	12.30	0.00	0.00	0.40	3.36
Malaysia	4.83	4.56	4.73	4.88	0.15	3.17	0.32	7.02
Nigeria	1.10	1.10	1.10	1.10	0.00	0.00	0.00	0.00
Thailand	0.85	0.87	0.89	0.89	0.00	0.00	0.01	1.15
Colombia	0.33	0.33	0.34	0.34	0.00	0.00	0.01	3.03
Papua New Guinea	0.20	0.20	0.18	0.18	0.00	0.00	-0.02	-10.00
Guatemala	0.18	0.19	0.19	0.19	0.00	0.00	0.01	5.56
Brazil	0.16	0.16	0.17	0.17	0.00	0.00	0.00	0.00
Honduras	0.16	0.16	0.16	0.16	0.00	0.00	0.00	0.00
Cameroon	0.15	0.15	0.15	0.15	0.00	0.00	0.00	0.00
World	19.61	20.29	20.86	21.01	0.15	0.72	0.72	3.55
Oil, Palm								
Indonesia	43.00	45.50	46.70	46.70	0.00	0.00	1.20	2.64
Malaysia	19.71	19.38	19.70	20.20	0.50	2.54	0.82	4.23
Thailand	3.27	3.33	3.38	3.38	0.00	0.00	0.05	1.50
Colombia	1.88	1.90	2.00	2.00	0.00	0.00	0.10	5.26
Nigeria	1.50	1.50	1.50	1.50	0.00	0.00	0.00	0.00
Guatemala	0.89	0.99	1.00	1.00	0.00	0.00	0.01	1.01
Papua New Guinea	0.82	0.83	0.83	0.83	0.00	0.00	0.00	0.00
Cote d'Ivoire	0.62	0.63	0.63	0.63	0.00	0.00	0.01	1.61
Brazil	0.59	0.60	0.65	0.65	0.00	0.00	0.05	8.33
Honduras	0.65	0.56	0.62	0.62	0.00	0.00	0.06	10.71
World	76.09	78.41	80.22	80.72	0.50	0.62	2.32	2.96

World and Selected Countries and Regions

Table 17 Cotton Area, Yield, and Production

Country / Region	Area (Million hectares)				Yield (Kilograms per hectare)				Production (Million 480 lb. bales)				Change in Production			
	2023/24	Prel.	2025/26 Proj.		2023/24	Prel.	2025/26 Proj.		2023/24	Prel.	2025/26 Proj.		From last month		From last year	
		2024/25	Jan	Feb		2024/25	Jan	Feb		2024/25	Jan	Feb	MBales	Percent	MBales	Percent
World	30.90	30.04	29.51	29.48	791	859	881	885	112.23	118.54	119.43	119.86	0.43	0.36	1.31	1.11
United States	2.61	3.16	3.16	3.16	1,008	993	959	959	12.07	14.41	13.92	13.92	0.00	0.00	-0.50	-3.43
Total Foreign	28.29	26.88	26.35	26.32	771	843	872	876	100.17	104.13	105.52	105.94	0.43	0.40	1.81	1.74
South Asia																
India	12.69	11.48	11.20	11.20	436	440	457	457	25.40	23.20	23.50	23.50	0.00	0.00	0.30	1.29
Pakistan	2.40	2.00	1.95	1.95	635	544	558	558	7.00	5.00	5.00	5.00	0.00	0.00	0.00	0.00
China	2.85	2.90	3.05	3.05	2,089	2,402	2,463	2,499	27.35	32.00	34.50	35.00	0.50	1.45	3.00	9.38
South America																
Brazil	1.66	1.95	2.10	2.10	1,911	1,903	1,944	1,944	14.57	17.00	18.75	18.75	0.00	0.00	1.75	10.29
Argentina	0.62	0.62	0.53	0.50	578	501	596	599	1.65	1.43	1.45	1.38	-0.08	-5.17	-0.06	-3.85
Paraguay	0.06	0.07	0.06	0.06	812	837	907	907	0.21	0.25	0.25	0.25	0.00	0.00	0.00	0.00
Africa																
Burkina Faso	0.46	0.35	0.39	0.39	361	345	355	355	0.77	0.55	0.64	0.64	0.00	0.00	0.09	15.45
Mali	0.71	0.62	0.53	0.53	407	442	334	334	1.33	1.27	0.82	0.82	0.00	0.00	-0.45	-35.18
Cote d'Ivoire	0.40	0.36	0.29	0.29	358	360	420	420	0.65	0.59	0.56	0.56	0.00	0.00	-0.03	-5.08
Benin	0.51	0.54	0.51	0.51	482	487	491	491	1.13	1.20	1.15	1.15	0.00	0.00	-0.05	-4.17
Egypt	0.10	0.13	0.08	0.08	686	712	708	708	0.32	0.43	0.26	0.26	0.00	0.00	-0.17	-38.82
Cameroon	0.24	0.23	0.20	0.20	671	513	577	577	0.74	0.54	0.53	0.53	0.00	0.00	-0.01	-1.85
Tanzania	0.47	0.44	0.44	0.44	220	173	198	198	0.47	0.35	0.40	0.40	0.00	0.00	0.05	14.29
Nigeria	0.27	0.27	0.27	0.27	282	282	282	282	0.35	0.35	0.35	0.35	0.00	0.00	0.00	0.00
Zimbabwe	0.24	0.24	0.24	0.24	195	195	204	204	0.22	0.22	0.23	0.23	0.00	0.00	0.01	4.65
Ethiopia	0.06	0.06	0.06	0.06	713	713	713	713	0.18	0.18	0.18	0.18	0.00	0.00	0.00	0.00
Former Soviet Union - 12																
Uzbekistan	1.03	1.00	0.93	0.93	613	653	597	597	2.90	3.00	2.55	2.55	0.00	0.00	-0.45	-15.00
Turkmenistan	0.50	0.50	0.52	0.52	348	348	356	356	0.80	0.80	0.85	0.85	0.00	0.00	0.05	6.25
Tajikistan	0.17	0.18	0.18	0.18	627	605	641	641	0.48	0.50	0.53	0.53	0.00	0.00	0.03	6.00
Kazakhstan	0.12	0.11	0.14	0.14	558	544	505	505	0.30	0.27	0.33	0.33	0.00	0.00	0.06	22.64
Middle East																
Turkey	0.44	0.47	0.40	0.40	1,580	1,850	1,654	1,654	3.19	3.95	3.00	3.00	0.00	0.00	-0.95	-24.05
Syria	0.03	0.03	0.03	0.03	1,161	1,161	1,161	1,161	0.16	0.16	0.16	0.16	0.00	0.00	0.00	0.00
Iran	0.10	0.10	0.10	0.10	762	871	871	871	0.35	0.40	0.40	0.40	0.00	0.00	0.00	0.00
Australia	0.51	0.60	0.47	0.47	2,156	2,032	2,085	2,085	5.00	5.60	4.50	4.50	0.00	0.00	-1.10	-19.64
Mexico	0.13	0.13	0.08	0.07	1,435	1,719	1,684	1,709	0.87	1.00	0.58	0.57	-0.02	-2.59	-0.43	-43.22
Burma	0.18	0.19	0.19	0.19	654	654	659	659	0.55	0.57	0.56	0.56	0.00	0.00	-0.01	-1.93
Others	1.37	1.34	1.43	1.43	518	543	534	534	3.26	3.35	3.50	3.52	0.02	0.43	0.17	5.08

World and Selected Countries and Regions

TABLE 18

The table below presents a record of the February projection and the final estimate. Using world wheat production as an example, the "root mean square error" means that chances are 2 out of 3 that the current forecast will not be above or below the final estimate by more than 0.6 percent. Chances are 9 out of 10 (90% confidence level) that the difference will not exceed 1 percent. The average difference between the February projection and the final estimate is 2.7 million tons, ranging from 0 million to 7.3 million tons. The February projection has been below the estimate 34 times and above 10 times.

RELIABILITY OF PRODUCTION PROJECTIONS 1/

COMMODITY AND REGION	Root mean square error	90 percent confidence interval	Difference between forecast and final estimate				
			Average	Smallest	Largest	Years	
						Below final	Above final
	Percent		---Million metric tons---				
WHEAT							
World	0.6	1.0	2.7	0.0	7.3	34	10
U.S.	0.2	0.3	0.1	0.0	0.3	20	12
Foreign	0.6	1.1	2.7	0.0	7.3	34	10
COARSE GRAINS 2/							
World	1.3	2.1	11.1	0.0	36.3	35	9
U.S.	0.2	0.3	0.2	0.0	1.8	19	12
Foreign	1.8	3.0	11.2	0.0	36.3	33	10
RICE (Milled)							
World	1.5	2.6	4.6	0.1	14.0	35	9
U.S.	1.4	2.3	0.0	0.0	0.3	12	6
Foreign	1.6	2.6	4.6	0.1	14.0	35	9
SOYBEANS							
World	2.6	4.4	4.6	0.4	15.3	24	20
U.S.	1.3	2.2	0.7	0.0	3.2	19	19
Foreign	4.4	7.4	4.6	0.3	14.9	26	18
COTTON			---Million 480-lb. bales---				
World	2.3	3.9	1.7	0.0	5.4	31	13
U.S.	1.1	1.9	0.1	0.0	0.4	14	28
Foreign	2.8	4.7	1.8	0.1	5.7	31	13
UNITED STATES			-----Million bushels-----				
<i>CORN</i>	0.2	0.3	7	0	72	3	7
<i>SORGHUM</i>	0.1	0.2	0	0	4	0	2
<i>BARLEY</i>	0.9	1.6	1	0	11	22	4
<i>OATS</i>	0.4	0.6	0	0	2	5	4

1/ Marketing years 1981/82 through 2024/25 for grains, soybeans, and cotton. Final for grains, soybeans, and cotton is defined as the first November estimate following the marketing year for 1981/82 through 2023/24, and for 2024/25 the last month's estimate.

2/ Includes corn, sorghum, barley, oats, rye, millet, and mixed grain