



United States
Department of
Agriculture

Foreign
Agricultural
Service

Circular Series
WAP 03-25
March 2025

World Agricultural Production

Australia Wheat: Production Increased to the Third Highest on Record

USDA estimates Australia wheat production for marketing year 2024/25 at 34.1 million metric tons, up 7 percent from last month, 31 percent from last year and 14 percent from the 5-year average. Harvested area is estimated at 13.1 million hectares, up slightly from last month, 6 percent from last year and 8 percent above the 5-year average. Yield is estimated at 2.61 metric tons per hectare, up 6 percent from last month, 24 percent from last year and 8 percent above the 5-year average. The revisions were made based on the recently released official government estimates from the Australian Bureau of Agricultural and Resource Economics and Sciences (ABARES).



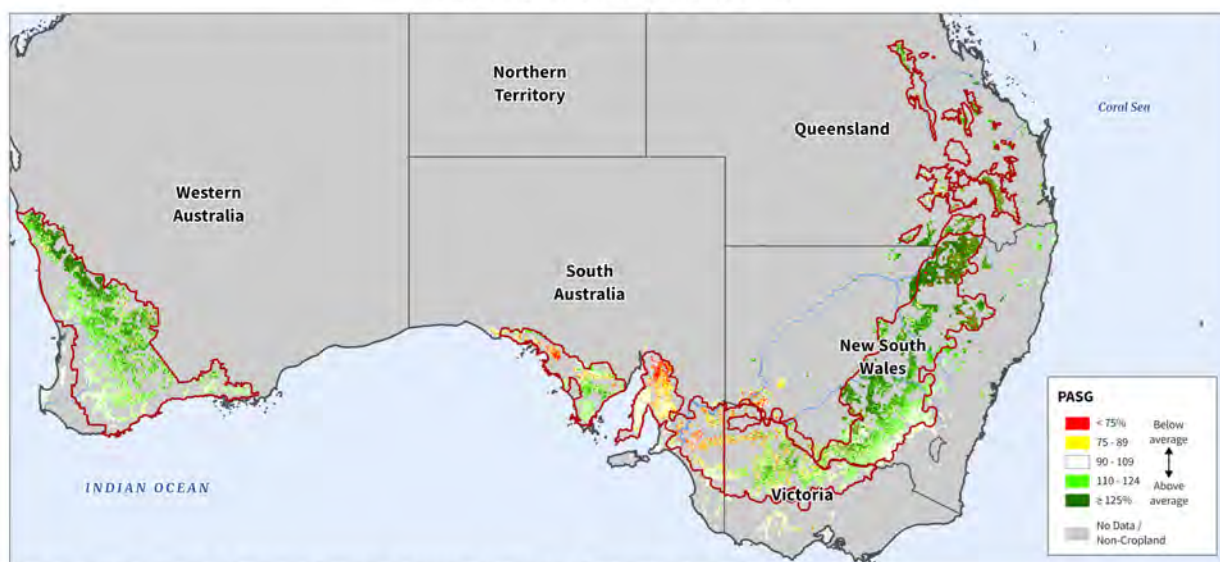
Approved by the World Agricultural Outlook Board

This year's production is the third highest on record as yields exceeded previous estimates as harvest progressed. The recent ABARES report states that grain receipt data indicates yields were better than expected particularly in Western Australia and New South Wales, which comprises over 60 percent of total production. In September 2024, FAS/Canberra observed the wheat crop to be in good condition in southern New South Wales.

New South Wales started the season with favorable subsoil moisture, which benefited crop establishment whereas Western Australia, South Australia and Victoria all started the season with dry conditions. Despite the dry start, there was improved rainfall during the growing season, which provided favorable conditions during the critical grain fill period, boosting yields. At the end of the grain fill period, the Percent of Average Seasonal Greenness (PASG) showed above-average crop vigor in the major wheat growing regions.

Australia: Wheat Belt Percent of Average Seasonal Greenness (PASG)

September 5 to October 6, 2024 (1-Month)

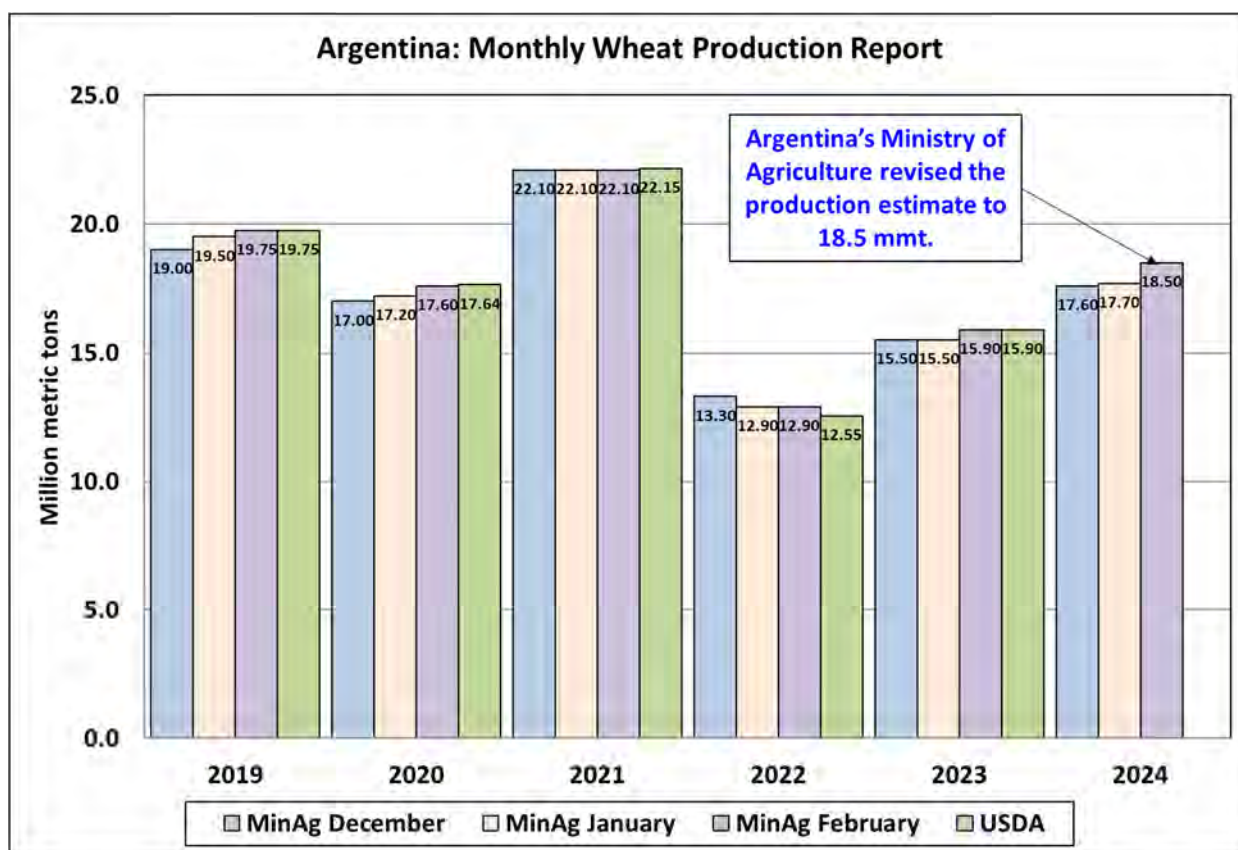


Source: MODIS Percent of Average Seasonal Greenness (1-Month, Sep 5 to Oct 6, 2024); IFPRI SPAM 2020 Wheat Mask

Wheat is a winter crop in Australia. Generally, planting commences in April and harvest begins in October. (For more information, please contact Shannon.Moyo@usda.gov.)

Argentina Wheat: Harvest Complete and Production Up 17 Percent from Last Year

Argentina wheat production for marketing year 2024/25 is estimated at 18.5 million metric tons, up 5 percent from last month and 17 percent from last year. Wheat yield is estimated at 3.03 tons per hectare (t/ha), up 3 percent from last month and 7 percent from last year's yield. Harvested area is estimated at 6.1 million hectares, up 2 percent from last month and 9 percent from last year.



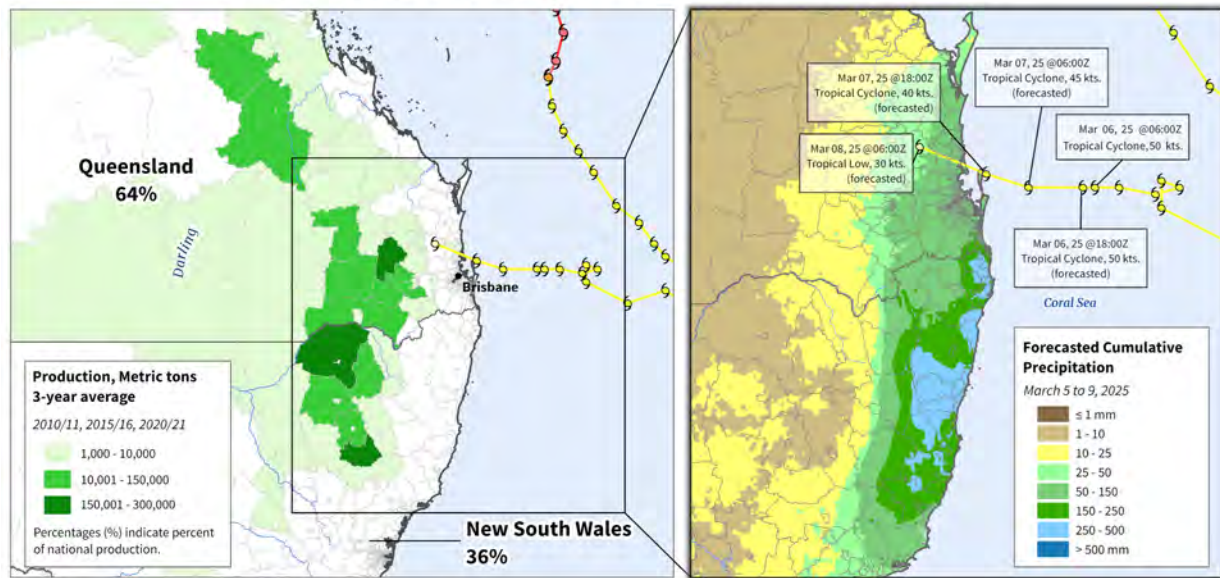
Wheat harvest finished in January. The Argentina Ministry of Agriculture recently published an updated monthly report, which revised the production estimate. Based on the report, higher planted area occurred in northern Buenos Aires, southern Santa Fe and southern Córdoba. In the monthly reports, the Ministry of Agriculture does not publish harvested yield information. Typically, yield data published by *Bolsa de Cereales de Buenos Aires* is similar to the Ministry of Agriculture's final harvested yield estimate. As of January, when harvest was complete, *Bolsa Cereales* projected yield at 3.04 t/ha. (For more information, please contact Katie.McGaughey@usda.gov.)

Australia Sorghum: Production Increased Resulting in Second Highest Yield in 10 Years

USDA forecasts Australia sorghum production for marketing year 2024/25 at 2.3 million metric tons, up 10 percent from last month, 5 percent from last year and 21 percent above the 5-year average. Harvested area is forecast at 570,000 hectares, unchanged from last month, down 5 percent from last year and 6 percent above the 5-year average. Yield is forecast at 4.04 metric tons per hectare, up 10 percent from last month and last year, and 22 percent above the 5-year average.

Sorghum is mainly planted in the eastern Australian states of Queensland and New South Wales. Throughout this summer's growing season there have been favorable conditions for sorghum, which has resulted in the second highest yield in the past 10 years. Currently, Tropical Cyclone Alfred is threatening Queensland. This storm is tracking inland on a westward path and could bring precipitation and wind toward the sorghum growing area. However, based on the current rainfall forecast, the heavy precipitation will mainly affect the coastal region.

Australia: Sorghum Production Areas and Tropical Cyclone Alfred



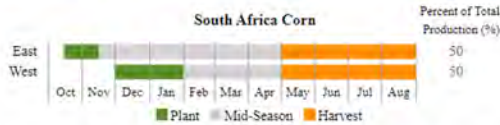
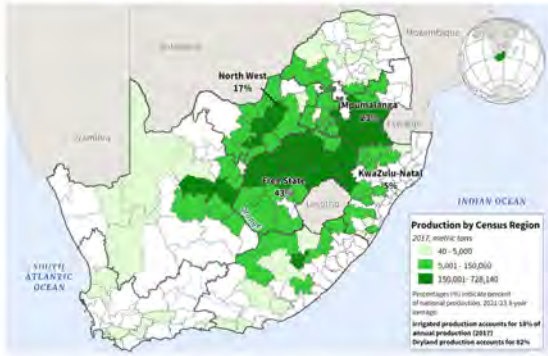
Source: Australian Bureau of Statistics, Agricultural Censuses of 2010/11, 2015/16, and 2020/21 (2021 SA2 Boundaries); CHIRPS Forecasted Cumulative Precipitation (5-Days, Mar 5 to Mar 9, 2025); National Hurricane Center (NHC), Central Pacific Hurricane Center, and Joint Typhoon Warning Center (JTWC). Additional post-processing and value added by NOAA/NESDIS/STAR/RAMMB and CIARA.

Sorghum can be planted from September through the end of January and harvest begins in March for the early planted crop and goes through June. *(For more information, please contact Shannon.Moyo@usda.gov.)*

South Africa Corn: Beneficial La Niña Rains in February Mitigated Dry Spell

South Africa's marketing year (MY) 2024/25 corn production is forecast at 16.0 million metric tons (mmt), down 1.0 mmt (6 percent) from last month, but up 2.6 mmt (19 percent) from last year. The USDA production forecast includes output from both developing and commercial sectors, with the commercial sector accounting for approximately 96 percent of the total output. Harvested area is estimated at 3.0 million hectares, down 150,000 ha (5 percent) from last month and nearly the same area as last year. Yield is forecast at 5.33 metric tons per hectare, down 1 percent from last month, nearly equal to the 5-year average, and up 19 percent from last year's El Niño drought.

South Africa Corn Production



Source: Province-level Corn Production Statistics from South Africa Crop Estimates, Department of Agriculture, Land Reform, and Rural Development, 2023. District-level Production from South Africa Census of Commercial Agriculture, 2017.

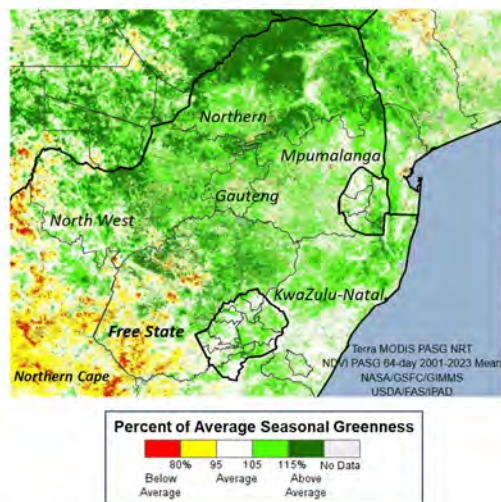
South Africa Corn Yields



Sources: El Niño and La Niña years defined by NOAA's Oceanic Niño Index (ONI). Crop yields from PSD Online, March 2025.

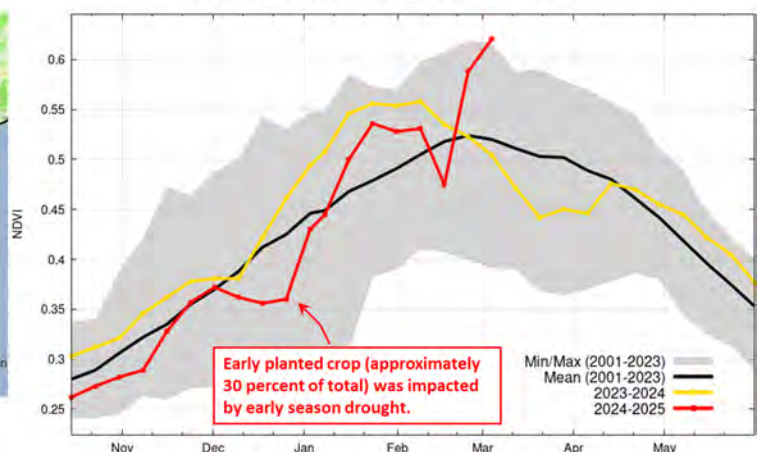
FAS/Pretoria traveled in South Africa's primary producing provinces in early March and interviewed representatives from the major grain cooperatives. They reported that early planted crops (approximately 30 percent) suffered from a dry spell from mid-November through mid-December, but beneficial La Niña rains in January and February boosted yield potential to nearly average. Crop conditions for the late planted crop (approximately 70 percent) was observed in early March to range from average to above average. Satellite-derived Normalized Difference Vegetation Index (NDVI) and the Percent of Average Seasonal Greenness (PASG) indices also confirmed dry spells from mid-November through mid-December, but beneficial January and February rains boosted yield potential ranging from average to above-average.

Percent of Average Seasonal Greenness (PASG) (January 1 through March 5, 2025)



Source: USDA-NASA Global Agricultural Monitoring (GLAM); PASG-MODIS and NDVI-MODIS (250-meters) measurements are from the Terra satellite.

Cropland NDVI-MODIS Measurements (October 1, 2024 through March 5, 2025)



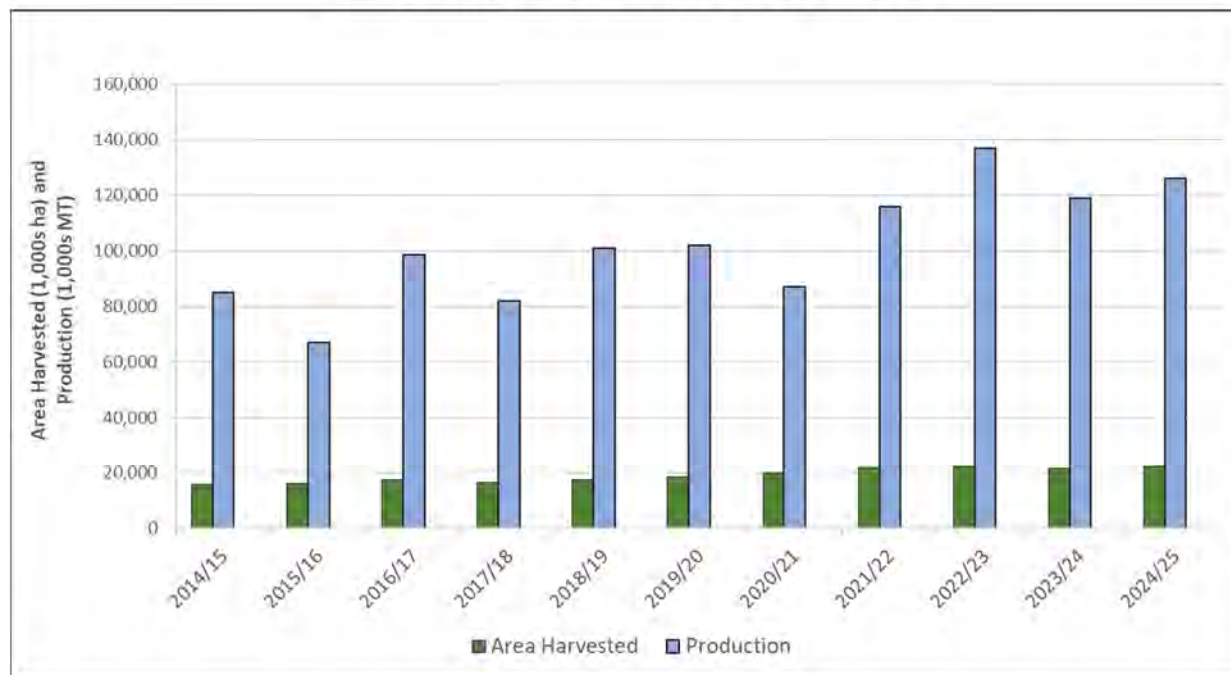
Source: Primary corn producing provinces include Free State (43 percent of total production); Mpumalanga (23 percent); and North West (17 percent).

South Africa’s primary corn producing provinces in order of estimated MY 2024/25 production include: Free State (43 percent of total production), Mpumalanga (23 percent), North West (17 percent), and KwaZulu-Natal (5 percent). The planting season in the east is from late October through November, and the planting season in the west is from late November to early January. South African farmers will harvest the corn crop from April through September, and the bulk of the harvest (87 percent) is typically delivered to the silos from May through August. *(For more information, please contact Curt.Reynolds@usda.gov.)*

Brazil Corn: MY 2023/24 Production and Yield Revised Down

USDA estimates Brazil corn production for marketing year (MY) 2023/24 at 119.0 million metric tons (mmt), down 2 percent from last month and 13 percent from MY 2022/23, but 6 percent above the 5-year average. Harvested area is estimated at 21.7 million hectares, up 1 percent from last month but down 3 percent from MY 2022/23. Harvested area for MY 2023/24 is, however, 4 percent above the 5-year average. Yield is estimated at 5.50 tons per hectare, down 3 percent from last month and 10 percent from MY 2022/23 but more than 2 percent above the 5-year average.

Brazil Corn: Harvested Area & Production

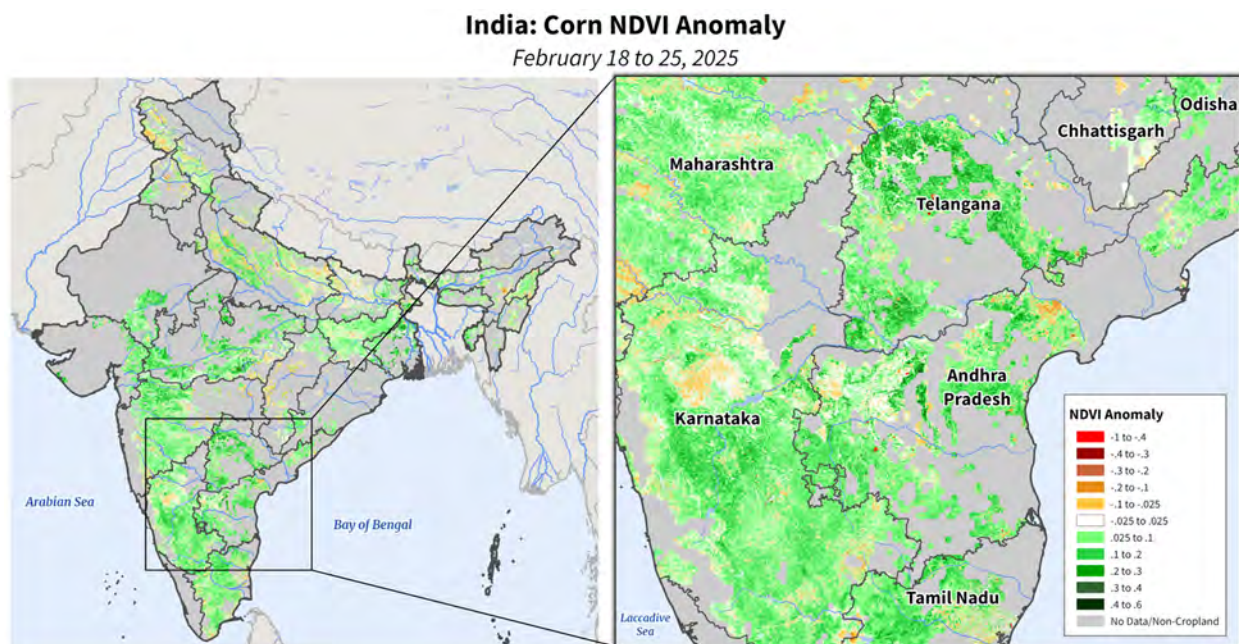


Source: USDA PSD Online

Updated utilization data has indicated lower corn production in Brazil in MY 2023/24; USDA’s corn estimate is revised down 3.0 mmt. Yield was also revised lower, reflecting this lower production. *(For more information, please contact Aaron.Mulhollen@usda.gov.)*

India Corn: Record Production and Yield

USDA estimates marketing year 2024/25 India corn production at a record of 40.0 million metric tons, up 5 percent from last month and 6 percent from last year due to ideal growing conditions. Harvested area is estimated at 11.2 million hectares, up 4 percent from last month, but down slightly from last year. Yield is estimated at a record 3.57 metric tons per hectare, up 2 percent from last month and 7 percent from last year.



Source: MODIS NDVI Difference from Normal (8-Days, Feb 18 to Feb 25, 2025);
IFPRI Spatial Production Allocation Model (SPAM) 10km 2020 Corn Mask

Corn is grown in three seasons: *kharif* (accounting for 70 percent of the total production), *rabi*, and *summer*. Planting for the *kharif* crop starts with the onset of the southwest monsoon in June and planting for the *rabi* crop starts in November. *Rabi* corn is predominantly grown on irrigated fields. The Ministry of Agriculture reported planting progress (February 28) is up 15 percent from the same period last year because of strong domestic prices. The *rabi* crop progressed under ideal growing conditions because of adequate irrigation. The satellite-derived Normalized Difference Vegetation Index (NDVI) shows crop vigor to be above average. The corn crop is currently at the tasseling stage. Harvest should begin in late March for the *rabi* crop. *Summer* season planting has started. (For more information, please contact Arnella.Trent@usda.gov.)

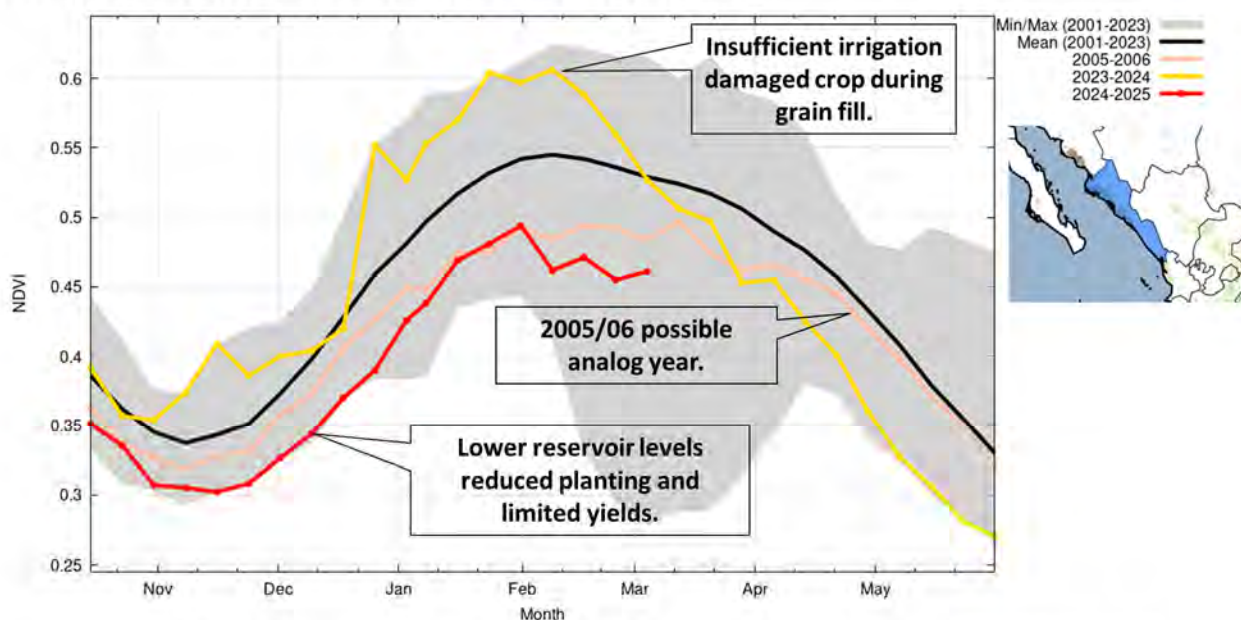
Mexico Corn: Yield Declines due to Drought in Northwest

USDA estimates Mexico corn production for marketing year 2024/25 at 23.3 million metric tons, down 400,000 metric tons or 2 percent from last month, 1 percent from last year, and 12 percent from the 5-year average. Harvested area is estimated at 6.4 million hectares, up 250,000 hectares or 4 percent from last month and last year, but down 6 percent from the 5-year average. Yield is estimated at 3.67 tons per hectare (t/ha), down 6 percent from last month, 5 percent from last year's drought-affected crop, and 6 percent from the 5-year average.

Mexico corn has two seasons, a spring/summer season, followed by a fall/winter season. Area has increased based on harvested area reports for the spring/summer crop and yield has declined due to poor conditions for the fall/winter corn crop.

The predominantly rainfed spring/summer corn crop is typically 70 percent of annual production. For this season, the largest harvested area is from the state of Chiapas and estimated similar to last year, whereas 15 states of Mexico – especially Oaxaca, Michoacán, and Guanajuato – are estimated greater than last year, according to Mexico’s Agri-Food and Fisheries Information Service (SIAP). Once the rains began in late June, the improved soil moisture supported the farmers in sowing more corn than last year’s spring/summer season. Harvest completed in February for this season.

Mexico: Winter Corn NDVI in Sinaloa

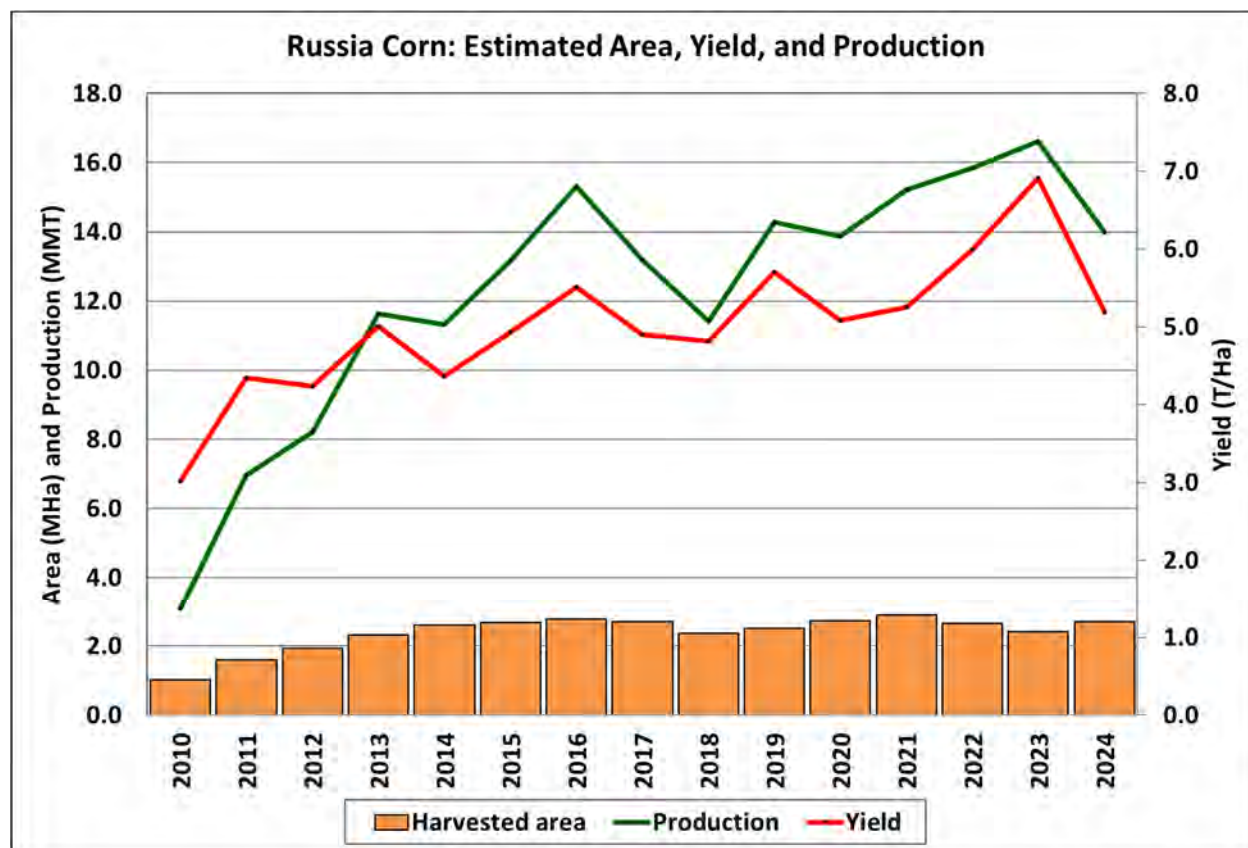


Source: NASA/USDA Global Agricultural Monitor (GLAM) MODIS Terra (250 m) NDVI, ESA World Cover 2020 crop mask.

In contrast, conditions for fall/winter corn are poor. The fall/winter corn season typically accounts for 30 percent of annual production, with 68 to 72 percent from Sinaloa. Farmers in Sinaloa are expected to have planted 200,000 hectares of winter corn according to in-country sources. These area estimates are less than last year because of low reservoir levels due to persistent dryness and high temperatures. Farmers typically relied on four irrigation cycles during the growing season. Last year, some farmers managed to irrigate three times. This year, farmers are only using reservoir water once and some are pumping ground water to get the second irrigation cycle, leading to expectations for sub-optimal yields. Typically, the irrigated corn of Sinaloa yields 12.00 t/ha. This year, the satellite-derived Normalized Difference Vegetation Index (NDVI) indicates less-than-ideal crop vigor. Thus far, this NDVI curve is most similar to the one observed in 2006, when Sinaloa’s winter corn yield was 9.83 t/ha according to SIAP. For the fall/winter crop, planting began in November and harvest is from mid-April through July. *(For more information, please contact Lisa.Colson@usda.gov.)*

Russia Corn: Production Up Month-to-Month, but Down 16 Percent from Last Year

Russia corn production for marketing year 2024/25 is estimated at 14.0 million metric tons, up 6 percent from last month, but down 16 percent from last year and 8 percent from the 5-year average. Yield is estimated at 5.19 tons per hectare, up 2 percent from last month, but down 25 percent from last year and 10 percent from the 5-year average. Harvested area is estimated at 2.7 million hectares, up 4 percent from last month, 13 percent from last year, and 2 percent from the 5-year average.

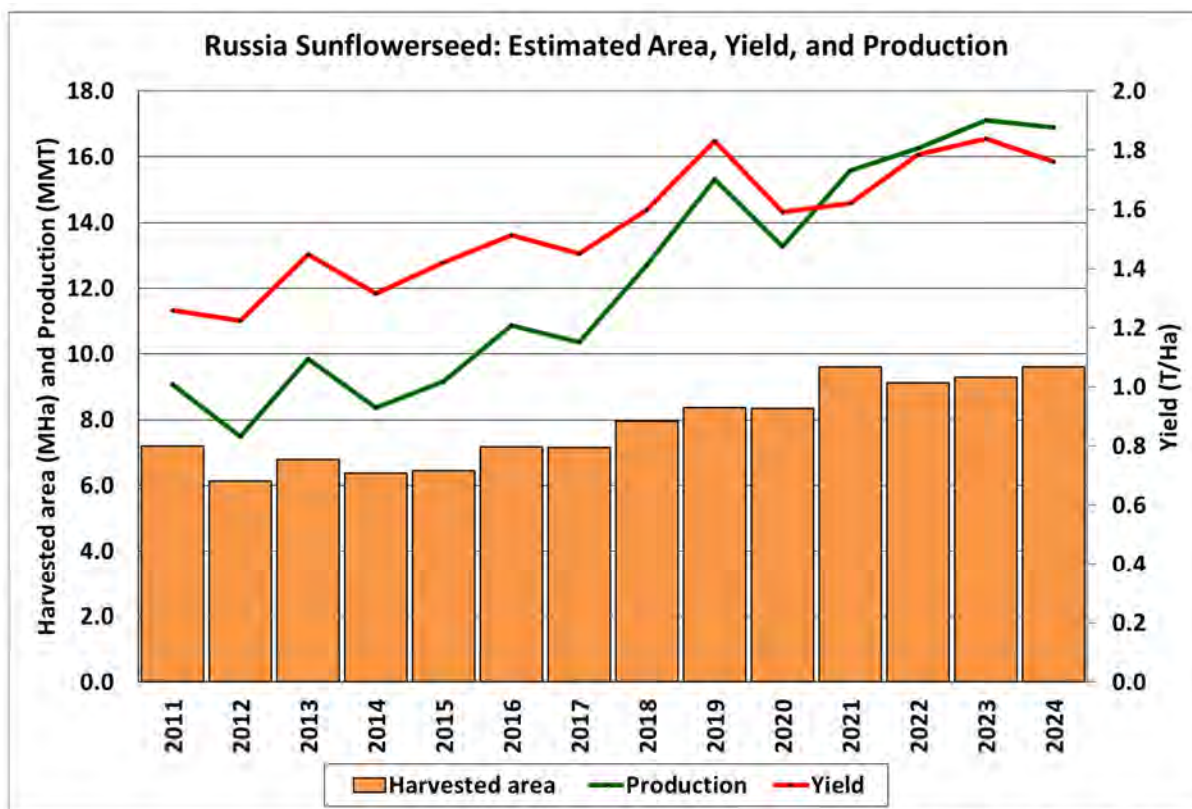


Source: USDA PSD Online

Russia's Statistical Agency, Rosstat, released its final data for all major crops harvested in 2024. The reported corn production increase is primarily yield-driven. Rosstat increased its yield for corn relative to the preliminary estimate released in December of 2024. This season, Russia's main corn producing regions experienced overall unfavorable weather conditions. Inadequate precipitation and higher-than-normal temperatures during the key yield formation stages hampered crop development and caused a year-over-year decline in yield, which is reflected in Rosstat's final data. Rosstat's data do not reflect the occupied territories of Ukraine, including Donetsk People's Republic, Lugansk People's Republic, Zaporozhye and Kherson regions. USDA crop production estimates for Russia exclude estimated output from Crimea. *(For more information, please contact Iliana.Mladenova@usda.gov.)*

Russia Sunflowerseed: Upward Production Revision Based on Rosstat's Final Report

Russia sunflowerseed production for marketing year 2024/25 is estimated at 16.9 million metric tons, up 2 percent from last month, but down 1 percent from last year. Yield is estimated at 1.76 tons per hectare, unchanged from last month and down 4 percent from last year. Harvested area is estimated at 9.6 million hectares, up 2 percent from last month and 3 percent from last year.

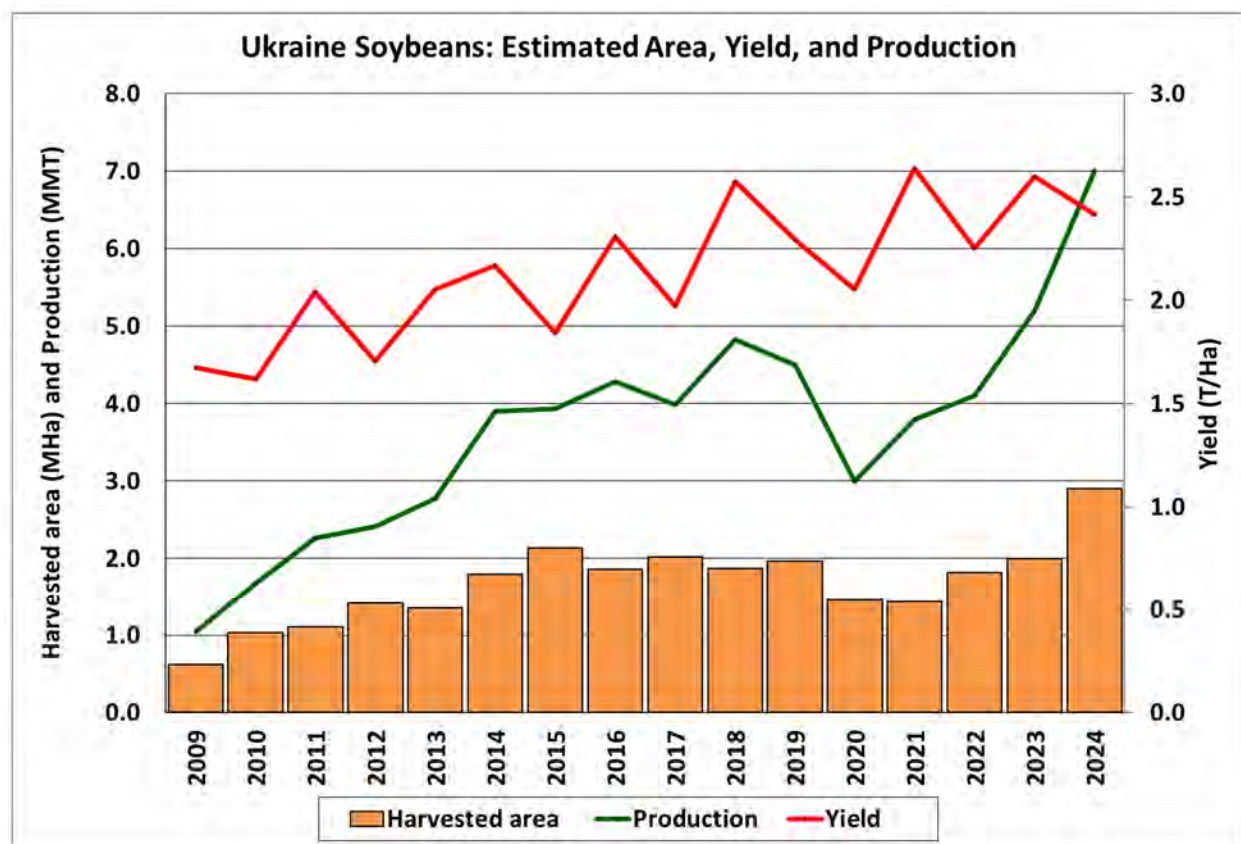


Source: USDA PSD Online

Russia's Statistical Agency, Rosstat, released its final data for all major crops harvested in 2024. Based on official data, this season's production and harvested area are the second highest on record. Despite the year-over-year reduction in yield, which was expected given the overall unfavorable weather this summer, production remained above the 5-year average by 9 percent owing largely to the increase in harvested area. Rosstat's data do not reflect the occupied territories of Ukraine, including Donetsk People's Republic, Lugansk People's Republic, Zaporozhye and Kherson regions. USDA crop production estimates for Russia exclude estimated output from Crimea. (For more information, please contact Iliana.Mladenova@usda.gov.)

Ukraine Soybeans: Record Production up 70 percent Above 5-Year Average

Ukraine soybean production for marketing year (MY) 2024/25 is estimated at 7.0 million metric tons, up 6 percent from last month and 35 percent from last year. Yield is estimated at 2.41 tons per hectare, up 6 percent from last month, but down 7 percent from last year. Harvested area is estimated at 2.9 million hectares, unchanged from last month and up 45 percent from last year. This season's production and harvested area are records, surpassing the 5-year average by 70 percent and 67 percent, respectively.



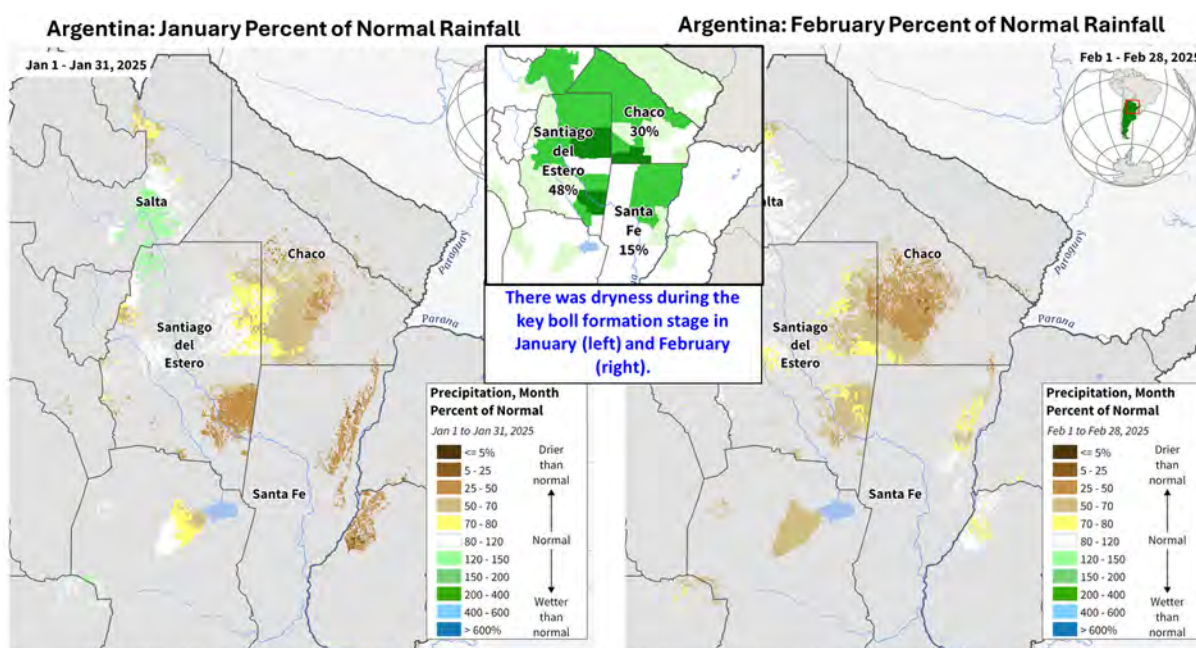
Sources: USDA PSD Online

At present, Ukraine can be divided into two zones, areas in conflict and areas not in conflict. As elaborated by FAS/Kyiv, due to the ongoing war there is no official and reliable information about the status of Ukraine's agriculture in the conflict zone. As a result, area and production data currently provided by FAS/Kyiv, Ukraine's Ministry of Agriculture (MinAg) and the State Statistical Service of Ukraine, which inform USDA's forecasts, do not reflect the whole country. For the MY 2024/25 season, the MinAg operational field data for both the MY 2024/25 winter and spring crops excludes the currently occupied territory of Ukraine, including the Donetsk, Zaporizhzhia, Luhansk and Kherson regions. MinAg also does not include Crimea. USDA crop production estimates for Ukraine include estimated output from Crimea. Crimean area and production numbers are extracted from the agricultural crop reports provided by the Russian Statistical Agency, Rosstat.

Despite the challenges imposed by the ongoing conflict, Ukraine's soybean production substantially expanded this year. This month's area and yield adjustments are made based on operational estimates and alternative data resources indicating better crop returns than initially forecasted. Historically, oilseeds have offered a better return on investment compared to grains. Export limitations and increases in transportation costs were some of the main factors that lowered the traditionally higher profits of oilseeds. As explained by FAS/Kyiv, farmers faced losses for all bulk commodities, including sunflowerseed, except for soybeans during the first two years after the start of the war. This consequently motivated the Ukrainian farmers to increase soybean area in 2024, which resulted in record production despite the year-over-year yield reduction. USDA crop production estimates for Ukraine include estimated output from Crimea. *(For more information, please contact Iliana.Mladenova@usda.gov.)*

Argentina Cotton: Dryness During January and February Caused Drop in Yield

Argentina cotton production for marketing year 2024/25 is forecast at 1,675 480-pound bales, down 3 percent from last month, but up 2 percent from last year. Cotton yield is forecast at 608 kilograms per hectare, down 3 percent from last month, but up 5 percent from last year's yield. Harvested area is forecast at 600,000 hectares, unchanged from last month and down 4 percent from last year.



Source: UCSB CHIRPS v2 Precipitation Data, IFPRI Global Cropland Synergy 2024 Crop Mask, Argentina Ministerio de Agroindustria Cotton Production Statistics

Cotton planting occurs from October through January. Cotton is mainly grown in the northern provinces: on average, 48 percent of production occurs in Santiago del Estero, 30 percent in Chaco and 15 percent in Santa Fe. During February, the crop was in flowering to open boll stages. Rainfall during both January and February were below average when the crop was at the key boll formation phase. Rainfall will be needed during March to halt further deterioration of the crop. Harvest begins in April. *(For more information, please contact Katie.McGaughey@usda.gov.)*



**World Agricultural Production
U.S. Department of Agriculture**

Foreign Agricultural Service / Global Market Analysis
International Production Assessment Division (IPAD)
GMA/IPAD Room 5071, South Building
1400 Independence Ave SW
Washington, DC 20250-1051
<https://ipad.fas.usda.gov/>

This report uses information from the Foreign Agricultural Service’s (FAS) global network of agricultural attachés and counselors, official statistics of foreign governments and other foreign source materials, and the analysis of economic data and satellite imagery. Estimates of foreign area, yield, and production are from the International Production Assessment Division (IPAD), FAS, and are reviewed by USDA’s Inter-Agency Commodity Estimates Committee. Estimates of U.S. area, yield, and production are from USDA’s National Agricultural Statistics Service. Numbers within the report may not add to totals because of rounding. This report reflects official USDA estimates released in the World Agricultural Supply and Demand Estimates (WASDE-584), March 11, 2025.

The FAS International Production Assessment Division prepared this report. The next issue of World Agricultural Production will be released after 12:00 p.m. Eastern Time, April 10, 2025.

Conversion Table

Metric tons to bushels

Wheat, soybeans	=	MT * 36.7437
Corn, sorghum, rye	=	MT * 39.36825
Barley	=	MT * 45.929625
Oats	=	MT * 68.894438

Metric tons to 480-lb bales

Cotton	=	MT * 4.592917
--------	---	---------------

Metric tons to hundredweight

Rice	=	MT * 22.04622
------	---	---------------

Area & weight

1 hectare	=	2.471044 acres
1 kilogram	=	2.204622 pounds



For further information, contact:
U.S. Department of Agriculture
Foreign Agricultural Service
Global Market Analysis

International Production Assessment Division
 GMA/IPAD Room 5071, South Building
 1400 Independence Ave SW
 Washington, DC 20250-1051

GENERAL INFORMATION

Senior Director	Ronald Frantz	202-720-4056	ronald.frantz@usda.gov
Director	Robert Tetrault	202-720-1071	robert.tetrault@usda.gov
USDA Remote Sensing Advisor	Vacant		
Sr. Analyst/Technical Lead	Curt Reynolds, Ph.D.	202-690-0134	curt.reynolds@usda.gov
Sr. Analyst/ Satellite Imagery Archives Manager/Technical Lead	Dath Mita, Ph.D.	202-720-7339	dath.mita@usda.gov
Sr. Analyst/Technical Lead	Vacant		
GIS Mapping/Imagery Analyst	Lisa Colson	202-720-6652	lisa.colson@usda.gov
WAP Coordinators	Shannon Moyo	771-221-5973	shannon.moyo@usda.gov
	Vacant		

ANALYSIS REGIONS

ANALYST

CONTACT INFORMATION

Brazil	Aaron Mulhollen	202-690-0131	aaron.mulhollen@usda.gov
South America (except Brazil), and Central Asia	Katie McGaughey	202-720-9210	katie.mcgaughey@usda.gov
Europe, North Africa, and Middle East	Bryan Purcell	202-690-0138	bryan.purcell@usda.gov
India, Pakistan, and South Asia	Arnella Trent	202-720-0881	arnella.trent@usda.gov
China and East Asia	Dath Mita, Ph.D.	202-720-7339	dath.mita@usda.gov
South Africa and Sub-Saharan Africa	Curt Reynolds, Ph.D.	202-690-0134	curt.reynolds@usda.gov
Indonesia and Southeast Asia	Justin Jenkins	202-720-0419	justin.jenkins@usda.gov
Mexico and Central America	Lisa Colson	202-720-6652	lisa.colson@usda.gov
Canada, Caribbean, and Australia	Shannon Moyo	771-221-5973	shannon.moyo@usda.gov
Russia, Ukraine, Kazakhstan, Moldova, and Belarus	Iliana Mladenova, Ph.D.	202-690-2315	iliana.mladenova@usda.gov



The Foreign Agricultural Service (FAS) updates its production, supply and distribution (PSD) database for cotton, oilseeds, and grains at 12:00 p.m. on the day the *World Agricultural Supply and Demand Estimates* (WASDE) report is released. This circular is released by 12:15 p.m.

FAS Reports and Databases:

World Agricultural Production

Current: <https://www.fas.usda.gov/data/world-agricultural-production>

Archive: <https://usda.library.cornell.edu/concern/publications/5q47rn72z?locale=en>

USDA's Foreign Agricultural Service (FAS) publishes a monthly report on crop acreage, yield and production in major countries worldwide. Sources include reporting from FAS's worldwide offices, official statistics of foreign governments, and analysis of economic data and satellite imagery. The reports reflect official USDA estimates released in the monthly *World Agricultural Supply and Demand Estimates* (WASDE).

World Markets and Trade

Current: <https://www.fas.usda.gov/data>

Archive:

https://usda.library.cornell.edu/catalog?f%5Bmember_of_collections_ssim%5D%5B%5D=Foreign+Agricultural+Service&locale=en

USDA's Foreign Agricultural Service (FAS) publishes monthly and quarterly reports which include data on U.S. and global trade, production, consumption and stocks, as well as analysis of developments affecting world trade in oilseeds, grains, cotton, livestock and poultry. The reports reflect official USDA estimates released in the monthly *World Agricultural Supply and Demand Estimates* (WASDE).

Global Agricultural Information Network (GAIN)

<https://gain.fas.usda.gov/>

USDA's Foreign Agricultural Service (FAS) provides timely reports on foreign markets through the Global Agriculture Information Network (GAIN) database. An average of 2,000 reports are added each year, with reports going back to 1995. GAIN reports are compiled by FAS' global market intelligence network, which includes FAS foreign service officers and locally engaged staff in over 90 overseas offices world-wide. They provide on-the-ground intelligence, insight, and analysis on nearly 200 countries, delivering information on foreign agricultural markets, crop conditions, and agro-political dynamics of interest to U.S. agriculture. GAIN reports contain assessments of commodity and trade issues made by USDA staff and are not necessarily statements of official U.S. government policy.

Production, Supply and Distribution (PS&D) Online

<https://apps.fas.usda.gov/psdonline/app/index.html#/app/home>

PSD Online is the public repository for USDA's Official Production, Supply and Distribution forecast data and reports for key agricultural commodities. PSD Online data are reviewed and updated monthly by an interagency committee chaired by USDA's World Agricultural Outlook Board (WAOB). The committee consist of representatives from Foreign Agricultural Service (FAS), the Economic Research Service (ERS), the Farm Service Agency (FSA), and the Agricultural Marketing Service (AMS).

EU Countries and Russia Wheat: Area and Production Estimates

<https://apps.fas.usda.gov/psdonline/app/index.html#/app/downloads> (click on PSD Datasets)

USDA's Foreign Agricultural Service (FAS) provides country-level area and production estimates for the nations of the European Union. For Russia, country-level area and production estimates are provided for Winter and Spring wheat. These datasets are reviewed and updated monthly by an interagency committee chaired by USDA's World Agricultural Outlook Board (WAOB) and can be downloaded through PSD datasets on PSD Online.



FAS Reports and Databases:

International Production Assessment (IPAD)

<https://ipad.fas.usda.gov/>

USDA's Foreign Agricultural Service (FAS) maintains a dynamic global crop production portal with key information including *World Agricultural Production* (WAP) briefs, Commodity Intelligence Reports (CIR), geospatial applications, crop production maps at a subnational level and crop calendars for the top-20 producing countries. Additionally, Crop Explorer (<https://ipad.fas.usda.gov/cropexplorer/>) displays rainfall, temperature, evapotranspiration, soil moisture, snow cover, and vegetation conditions in charts and maps.

USDA and NASA Global Agricultural Monitoring (GLAM)

<https://glam1.gsfc.nasa.gov/>

The USDA and NASA Global Agricultural Monitoring (GLAM) system provides near real-time and science quality Moderate Resolution Imaging Spectroradiometer (MODIS) Normalized Difference Vegetation Index (NDVI) from the satellites Terra and Aqua. The public can view and retrieve MODIS 8-day composited, global NDVI satellite imagery and time series data. GLAM was developed by NASA's Global Inventory Modeling and Mapping Studies (GIMMS) group for USDA's Foreign Agricultural Service.

Global Agricultural and Disaster Assessment System (GADAS)

<https://geo.fas.usda.gov/GADAS/index.html>

USDA's Foreign Agricultural Service (FAS) provides the Global Agricultural and Disaster Assessment System (GADAS), a web-based Geographic Information System (GIS) tool which integrates a vast array of highly detailed earth observation data streams, particularly targeted towards agricultural and disaster assessment analysis. GADAS is an interactive website which provides analysts with a wide variety of routine geospatial products (maps, charts, tables) they require for comprehensive situational investigations and recurring assessments.

Export Sales Reporting

<https://apps.fas.usda.gov/esrquery/>

USDA's Export Sales Reporting Program monitors U.S. agricultural export sales on a daily and weekly basis. Export sales reporting provides a constant stream of up-to-date market information for 40 U.S. agricultural commodities sold abroad. The weekly U.S. Export Sales report is the most currently available source of U.S. exports sales data. The data is used to analyze overall levels of export demand, determine where markets exit, and assess the relative position of U.S. commodities in foreign markets.

Global Agricultural Trade System (GATS)

<https://apps.fas.usda.gov/gats/default.aspx>

The Global Agricultural Trade System (GATS) is a searchable database containing monthly U.S. Census Bureau trade data organized by agricultural commodity and agricultural related product groups. Trade data is searchable by partner countries and partner groups. Historical U.S. agricultural trade data is available back to 1967. In addition, U.N. trade statistics (UN Comtrade) may be queried through GATS. UN trade data is available for nearly 200 countries or areas, dating from the inception of the Harmonized System (HS) of trade codes in 1989 to present. The database is continuously updated. U.S. trade data is updated monthly according to the U.S. Census Bureau's reporting system. UN Comtrade data are updated in GATS after nationally submitted data to the UN are standardized by the UN Statistical Division and added to the UN Comtrade database.

Other USDA Reports:

World Agricultural Supply and Demand Estimates (WASDE):

<http://www.usda.gov/oce/commodity/wasde/>

Economic Research Service:

<http://www.ers.usda.gov/topics/crops>

National Agricultural Statistics Service:

<http://www.nass.usda.gov/Publications/>

Table 01 World Crop Production Summary

Million Metric Tons

Commodity	World -	Total Foreign	North America			Former Soviet		European	Asia (WAP)					South America		Selected Other			All Others
			United States	Canada -	Mexico -	Russia -	Ukraine -		China -	India -	Indonesia	Pakistan	Thailand	Argentina	Brazil -	Australia	South Africa	Turkey -	
---Million metric tons---																			
Wheat																			
2022/23	789.9	745.0	44.9	34.8	3.6	92.0	21.5	nr	137.7	104.0	0.0	26.2	0.0	12.6	10.6	40.5	2.1	17.3	242.1
2023/24 prel.	791.2	742.1	49.1	32.9	3.5	91.5	23.0	nr	136.6	110.6	0.0	28.2	0.0	15.9	8.1	26.0	2.1	21.0	242.9
2024/25 proj.																			
Feb	793.8	740.1	53.7	35.0	2.6	81.5	22.9	nr	140.1	113.3	0.0	31.6	0.0	17.7	7.9	32.0	2.0	19.0	234.6
Mar	797.2	743.6	53.7	35.0	2.6	81.6	23.4	nr	140.1	113.3	0.0	31.6	0.0	18.5	7.9	34.1	1.9	19.0	234.6
Coarse Grains																			
2022/23	1,455.4	1,099.0	356.4	30.5	33.9	44.1	33.9	nr	285.9	56.8	12.4	11.3	5.4	43.9	143.5	18.8	17.5	14.8	346.1
2023/24 prel.	1,504.5	1,101.7	402.9	27.5	28.8	42.5	39.8	nr	297.4	57.2	12.7	10.2	5.4	59.4	124.8	14.4	13.9	17.0	350.6
2024/25 proj.																			
Feb	1,492.5	1,101.7	390.9	27.5	28.8	34.0	33.2	nr	303.5	57.6	12.8	9.8	5.5	59.4	132.5	15.5	17.5	14.7	349.5
Mar	1,495.7	1,104.9	390.9	27.5	28.4	34.8	33.5	nr	303.5	59.6	12.8	9.8	5.5	59.1	132.5	17.3	16.6	14.8	349.5
Rice, Milled																			
2022/23	516.7	511.6	5.1	0.0	0.2	0.6	0.0	nr	145.9	135.8	33.9	7.3	20.9	0.8	6.8	0.4	0.0	0.6	158.5
2023/24 prel.	522.3	515.4	6.9	0.0	0.2	0.7	0.0	nr	144.6	137.8	33.0	9.9	20.0	0.8	7.2	0.4	0.0	0.5	160.2
2024/25 proj.																			
Feb	532.7	525.6	7.1	0.0	0.2	0.8	0.0	nr	145.3	145.0	34.0	10.0	20.1	0.9	8.0	0.3	0.0	0.6	160.4
Mar	532.7	525.6	7.1	0.0	0.2	0.8	0.0	nr	145.3	145.0	34.0	10.0	20.1	0.9	8.0	0.3	0.0	0.6	160.4
Total Grains																			
2022/23	2,762.0	2,355.6	406.4	65.3	37.7	136.7	55.4	nr	569.6	296.5	46.3	44.9	26.3	57.2	160.9	59.8	19.6	32.7	746.7
2023/24 prel.	2,818.1	2,359.2	458.9	60.5	32.5	134.7	62.8	nr	578.6	305.5	45.7	48.3	25.4	76.0	140.1	40.9	16.0	38.6	753.7
2024/25 proj.																			
Feb	2,819.0	2,367.4	451.6	62.5	31.5	116.3	56.1	nr	588.8	315.9	46.8	51.4	25.6	78.0	148.4	47.8	19.5	34.2	744.5
Mar	2,825.6	2,374.1	451.6	62.5	31.1	117.2	56.9	nr	588.8	317.9	46.8	51.4	25.6	78.5	148.4	51.7	18.5	34.3	744.5
Oilseeds																			
2022/23	638.3	512.6	125.8	25.5	0.9	26.6	19.8	nr	68.7	42.3	14.7	2.7	1.0	31.5	166.9	10.0	3.8	4.0	94.3
2023/24 prel.	657.1	534.9	122.2	26.3	0.6	28.1	25.5	nr	68.6	41.4	13.9	3.7	1.1	54.2	158.8	7.4	2.8	3.1	99.4
2024/25 proj.																			
Feb	677.7	549.2	128.5	26.4	0.6	28.3	23.3	nr	69.3	43.0	15.0	3.0	1.1	55.1	175.8	7.1	3.9	3.2	94.2
Mar	679.4	550.9	128.5	26.4	0.7	28.6	24.2	nr	69.6	43.0	15.0	2.9	1.1	55.1	176.0	7.4	3.5	3.2	94.2
Cotton																			
2022/23	116.3	101.8	14.5	0.0	1.6	0.0	0.0	1.6	30.8	26.3	0.0	3.9	0.0	1.2	11.7	5.8	0.1	4.9	14.0
2023/24 prel.	113.0	100.9	12.1	0.0	0.9	0.0	0.0	1.0	27.4	25.4	0.0	7.0	0.0	1.7	14.6	5.0	0.1	3.2	14.8
2024/25 proj.																			
Feb	120.5	106.0	14.4	0.0	0.8	0.0	0.0	1.3	31.0	25.0	0.0	5.2	0.0	1.7	17.0	5.4	0.1	4.0	14.6
Mar	121.0	106.5	14.4	0.0	0.8	0.0	0.0	1.3	31.8	25.0	0.0	5.0	0.0	1.7	17.0	5.4	0.1	4.0	14.6

1/ Includes wheat, coarse grains, and rice (milled) shown above.

Table 02 Wheat Area, Yield, and Production

Country / Region	Area (Million hectares)				Yield (Metric tons per hectare)				Production (Million metric tons)				Change in Production			
	2022/23	Prel.		2024/25 Proj.		2022/23	Prel.		2024/25 Proj.		2022/23	Prel.		2024/25 Proj.		
		2023/24	Feb	Mar	2023/24		Feb	Mar	2023/24	Feb		Mar	MMT	Percent	MMT	Percent
World	219.64	222.93	222.36	222.32	3.60	3.55	3.57	3.59	789.89	791.21	793.79	797.23	3.44	0.43	6.02	0.76
United States	14.36	15.01	15.57	15.57	3.13	3.27	3.45	3.45	44.90	49.10	53.65	53.65	0.00	0.00	4.56	9.28
Total Foreign	205.28	207.93	206.79	206.75	3.63	3.57	3.58	3.60	744.99	742.11	740.14	743.58	3.44	0.46	1.47	0.20
European Union	24.44	24.34	22.83	22.83	5.50	5.55	5.31	5.31	134.49	135.10	121.30	121.30	0.00	0.00	-13.80	-10.21
United Kingdom	1.81	1.72	1.40	1.40	8.57	8.13	7.89	7.89	15.54	13.98	11.05	11.05	0.00	0.00	-2.93	-20.96
Serbia	0.62	0.73	0.63	0.63	5.32	4.69	4.80	4.80	3.30	3.40	3.00	3.00	0.00	0.00	-0.40	-11.76
China	23.52	23.63	23.59	23.59	5.86	5.78	5.94	5.94	137.72	136.59	140.10	140.10	0.00	0.00	3.51	2.57
South Asia																
India	30.46	31.40	31.83	31.83	3.41	3.52	3.56	3.56	104.00	110.55	113.29	113.29	0.00	0.00	2.74	2.48
Pakistan	8.98	9.03	9.73	9.73	2.92	3.12	3.24	3.24	26.21	28.16	31.58	31.58	0.00	0.00	3.42	12.15
Afghanistan	1.86	2.35	2.30	2.30	2.05	2.20	2.26	2.26	3.80	5.17	5.20	5.20	0.00	0.00	0.03	0.58
Nepal	0.72	0.72	0.72	0.72	2.98	2.90	2.92	2.92	2.15	2.09	2.10	2.10	0.00	0.00	0.01	0.48
Former Soviet Union - 12																
Russia	29.00	28.83	28.00	27.80	3.17	3.17	2.91	2.94	92.00	91.50	81.50	81.60	0.10	0.12	-9.90	-10.82
Russia Winter	16.30	15.27	15.80	15.70	4.17	4.19	3.64	3.55	68.00	64.00	57.50	55.80	-1.70	-2.96	-8.20	-12.81
Russia Spring	12.70	13.56	12.20	12.10	1.89	2.03	1.97	2.13	24.00	27.50	24.00	25.80	1.80	7.50	-1.70	-6.18
Ukraine	5.60	5.01	5.20	5.20	3.84	4.59	4.40	4.50	21.50	23.00	22.90	23.40	0.50	2.18	0.40	1.74
Kazakhstan	12.81	13.13	13.07	13.07	1.28	0.92	1.42	1.42	16.40	12.11	18.58	18.58	0.00	0.00	6.47	53.39
Uzbekistan	1.26	1.40	1.30	1.30	4.99	4.62	5.15	5.15	6.27	6.46	6.70	6.70	0.00	0.00	0.24	3.68
Belarus	0.68	0.68	0.69	0.69	3.48	3.38	3.80	3.80	2.35	2.30	2.60	2.60	0.00	0.00	0.30	13.04
Canada	10.10	10.70	10.65	10.65	3.45	3.08	3.28	3.28	34.81	32.95	34.96	34.96	0.00	0.00	2.01	6.11
South America																
Argentina	5.50	5.58	6.00	6.10	2.28	2.84	2.95	3.03	12.55	15.85	17.70	18.50	0.80	4.52	2.65	16.72
Brazil	3.09	3.47	3.06	3.06	3.42	2.33	2.58	2.58	10.55	8.10	7.89	7.89	0.00	0.00	-0.21	-2.57
Australia	13.05	12.37	13.00	13.06	3.11	2.10	2.46	2.61	40.55	25.96	32.00	34.11	2.11	6.59	8.15	31.39
Africa																
Egypt	1.45	1.35	1.40	1.40	6.55	6.57	6.57	6.57	9.50	8.87	9.20	9.20	0.00	0.00	0.33	3.72
Morocco	2.44	2.43	2.20	2.20	1.11	1.71	1.12	1.12	2.71	4.16	2.46	2.46	0.00	0.00	-1.70	-40.84
Algeria	1.80	1.80	1.80	1.80	2.00	1.50	1.67	1.67	3.60	2.70	3.00	3.00	0.00	0.00	0.30	11.11
Ethiopia	1.90	1.90	1.90	1.90	3.05	3.05	3.16	3.16	5.80	5.80	6.00	6.00	0.00	0.00	0.20	3.45
Middle East																
Turkey	6.80	7.20	7.25	7.25	2.54	2.92	2.62	2.62	17.25	21.00	19.00	19.00	0.00	0.00	-2.00	-9.52
Iran	6.20	6.20	6.20	6.20	2.13	2.26	2.34	2.34	13.20	14.00	14.50	14.50	0.00	0.00	0.50	3.57
Iraq	2.10	2.60	2.70	2.70	1.52	2.00	2.22	2.22	3.20	5.20	6.00	6.00	0.00	0.00	0.80	15.38
Syria	1.18	1.50	1.40	1.40	1.31	2.03	2.14	2.14	1.55	3.03	3.00	3.00	0.00	0.00	-0.03	-1.09
Mexico	0.60	0.56	0.46	0.46	6.06	6.21	5.65	5.65	3.61	3.48	2.60	2.60	0.00	0.00	-0.88	-25.20
Others	7.34	7.30	7.49	7.49	2.78	2.82	2.93	2.92	20.38	20.61	21.93	21.86	-0.08	-0.34	1.25	6.07

Table 03 Total Coarse Grain Area, Yield, and Production

Country / Region	Area (Million hectares)				Yield (Metric tons per hectare)				Production (Million metric tons)				Change in Production			
	Prel.		2024/25 Proj.		Prel.		2024/25 Proj.		Prel.		2024/25 Proj.		From last month		From last year	
	2022/23	2023/24	Feb	Mar	2022/23	2023/24	Feb	Mar	2022/23	2023/24	Feb	Mar	MMT	Percent	MMT	Percent
World	337.85	339.76	335.53	336.31	4.31	4.43	4.45	4.45	1,455.44	1,504.54	1,492.52	1,495.74	3.23	0.22	-8.80	-0.58
United States	35.18	38.99	37.10	37.10	10.13	10.33	10.54	10.54	356.45	402.88	390.86	390.86	0.00	0.00	-12.03	-2.98
Total Foreign	302.68	300.77	298.44	299.21	3.63	3.66	3.69	3.69	1,098.99	1,101.66	1,101.66	1,104.89	3.23	0.29	3.23	0.29
China	45.58	46.71	47.24	47.24	6.27	6.37	6.42	6.42	285.89	297.38	303.47	303.47	0.00	0.00	6.09	2.05
European Union	26.59	26.09	26.26	26.26	5.01	5.25	5.18	5.18	133.10	136.88	136.11	136.11	0.00	0.00	-0.78	-0.57
United Kingdom	1.37	1.38	1.47	1.47	6.33	5.87	5.72	5.72	8.67	8.08	8.43	8.43	0.00	0.00	0.35	4.30
South America																
Brazil	24.45	23.77	24.51	24.51	5.87	5.25	5.41	5.40	143.49	124.81	132.52	132.48	-0.04	-0.03	7.68	6.15
Argentina	9.66	10.10	8.93	8.93	4.55	5.88	6.65	6.61	43.91	59.37	59.39	59.09	-0.30	-0.51	-0.28	-0.47
Former Soviet Union - 12																
Russia	13.60	12.88	11.63	11.74	3.25	3.30	2.92	2.96	44.13	42.54	33.97	34.78	0.81	2.37	-7.77	-18.25
Ukraine	6.32	6.24	6.05	6.05	5.37	6.38	5.49	5.53	33.93	39.78	33.24	33.47	0.23	0.70	-6.31	-15.86
Kazakhstan	2.63	2.87	2.72	2.72	1.79	1.40	1.94	1.94	4.71	4.01	5.27	5.27	0.00	0.00	1.27	31.58
Belarus	1.03	1.05	1.18	1.18	3.11	3.09	3.39	3.39	3.20	3.23	3.98	3.98	0.00	0.00	0.75	23.22
Africa																
Nigeria	13.50	13.40	13.50	13.50	1.61	1.42	1.45	1.45	21.70	19.01	19.60	19.60	0.00	0.00	0.59	3.09
South Africa	3.13	3.18	3.34	3.19	5.61	4.38	5.25	5.18	17.53	13.94	17.55	16.55	-1.00	-5.69	2.61	18.76
Tanzania	5.30	5.50	5.60	5.60	1.36	1.51	1.67	1.67	7.23	8.33	9.33	9.33	0.00	0.00	1.00	12.01
Burkina Faso	4.09	4.20	4.20	4.20	1.16	1.12	1.13	1.13	4.73	4.72	4.75	4.75	0.00	0.00	0.04	0.74
Ethiopia	5.45	5.41	5.64	5.64	3.21	3.25	3.18	3.18	17.47	17.56	17.91	17.91	0.00	0.00	0.35	1.99
Egypt	1.10	1.12	1.09	1.09	7.52	7.19	7.22	7.22	8.28	8.07	7.88	7.88	0.00	0.00	-0.19	-2.35
Mali	5.20	4.80	4.90	4.90	1.38	1.43	1.43	1.43	7.15	6.86	7.00	7.00	0.00	0.00	0.14	2.07
India	23.90	25.02	24.85	25.25	2.38	2.28	2.32	2.36	56.78	57.16	57.60	59.60	2.00	3.47	2.44	4.28
Southeast Asia																
Indonesia	3.50	3.70	3.60	3.60	3.54	3.43	3.56	3.56	12.40	12.70	12.80	12.80	0.00	0.00	0.10	0.79
Philippines	2.54	2.49	2.55	2.55	3.28	3.25	3.25	3.25	8.32	8.10	8.30	8.30	0.00	0.00	0.20	2.47
Vietnam	0.89	0.87	0.85	0.85	4.99	5.00	5.06	5.06	4.42	4.35	4.30	4.30	0.00	0.00	-0.05	-1.15
Thailand	1.21	1.25	1.26	1.26	4.47	4.29	4.34	4.34	5.40	5.35	5.45	5.45	0.00	0.00	0.10	1.87
Mexico	8.64	7.70	7.63	7.88	3.92	3.74	3.77	3.60	33.88	28.82	28.76	28.36	-0.40	-1.39	-0.46	-1.60
Canada	5.74	5.24	5.05	5.05	5.32	5.25	5.45	5.45	30.54	27.52	27.52	27.52	0.00	0.00	0.00	-0.01
Australia	5.69	5.63	5.87	6.03	3.31	2.56	2.64	2.87	18.84	14.44	15.47	17.30	1.83	11.81	2.85	19.75
Middle East																
Turkey	4.57	4.59	4.55	4.55	3.25	3.72	3.22	3.24	14.84	17.05	14.66	14.76	0.10	0.68	-2.29	-13.41
Iran	1.86	1.86	1.81	1.81	2.38	2.38	2.50	2.50	4.42	4.42	4.52	4.52	0.00	0.00	0.10	2.26
Others	75.18	73.74	72.18	72.18	1.65	1.72	1.69	1.69	124.04	127.19	121.90	121.90	0.00	0.00	-5.30	-4.16

World and Selected Countries and Regions; Coarse Grain includes: Barley, Corn, Millet, Mixed Grains, Oats, Rye and Sorghum

Table 04 Corn Area, Yield, and Production

Country / Region	Area (Million hectares)				Yield (Metric tons per hectare)				Production (Million metric tons)				Change in Production						
	2022/23	Prel.		2024/25 Proj.		2022/23	Prel.		2024/25 Proj.		2022/23	Prel.		2024/25 Proj.		From last month		From last year	
		2023/24	Feb	Mar	2023/24		Feb	Mar	2023/24	Feb		Mar	MMT	Percent	MMT	Percent			
World	202.18	206.19	202.90	203.50	5.75	5.96	5.98	5.97	1,163.33	1,228.09	1,212.47	1,214.17	1.70	0.14	-13.92	-1.13			
United States	31.85	35.01	33.55	33.55	10.89	11.13	11.26	11.26	346.74	389.67	377.63	377.63	0.00	0.00	-12.03	-3.09			
Total Foreign	170.33	171.18	169.35	169.95	4.79	4.90	4.93	4.92	816.59	838.42	834.84	836.54	1.70	0.20	-1.89	-0.22			
China	43.07	44.22	44.74	44.74	6.44	6.53	6.59	6.59	277.20	288.84	294.92	294.92	0.00	0.00	6.08	2.10			
South America																			
Brazil	22.40	21.65	22.30	22.30	6.12	5.50	5.65	5.65	137.00	119.00	126.00	126.00	0.00	0.00	7.00	5.88			
Argentina	7.20	7.78	6.40	6.40	5.14	6.56	7.81	7.81	37.00	51.00	50.00	50.00	0.00	0.00	-1.00	-1.96			
Bolivia	0.47	0.44	0.43	0.43	2.67	2.49	2.56	2.56	1.26	1.09	1.10	1.10	0.00	0.00	0.02	1.38			
European Union	8.85	8.32	8.60	8.60	5.92	7.43	6.74	6.74	52.38	61.87	58.00	58.00	0.00	0.00	-3.87	-6.25			
Africa																			
South Africa	2.95	2.98	3.15	3.00	5.81	4.50	5.40	5.33	17.10	13.43	17.00	16.00	-1.00	-5.88	2.58	19.18			
Nigeria	5.80	5.70	5.50	5.50	2.23	1.94	2.00	2.00	12.95	11.05	11.00	11.00	0.00	0.00	-0.05	-0.48			
Ethiopia	2.55	2.50	2.55	2.55	4.00	4.00	4.00	4.00	10.20	10.00	10.20	10.20	0.00	0.00	0.20	2.00			
Egypt	0.93	0.95	0.92	0.92	8.00	7.58	7.61	7.61	7.44	7.20	7.00	7.00	0.00	0.00	-0.20	-2.78			
Tanzania	4.00	4.20	4.30	4.30	1.48	1.67	1.86	1.86	5.90	7.00	8.00	8.00	0.00	0.00	1.00	14.29			
Malawi	1.75	1.79	1.50	1.50	2.12	1.96	1.93	1.93	3.72	3.51	2.90	2.90	0.00	0.00	-0.61	-17.38			
Zambia	1.12	1.42	0.69	0.69	2.43	2.30	2.20	2.20	2.71	3.26	1.51	1.51	0.00	0.00	-1.75	-53.72			
Kenya	2.16	2.20	2.15	2.15	1.43	1.95	1.86	1.86	3.09	4.28	4.00	4.00	0.00	0.00	-0.28	-6.63			
Uganda	2.15	2.27	2.30	2.30	2.20	2.18	2.17	2.17	4.74	4.95	5.00	5.00	0.00	0.00	0.06	1.11			
Zimbabwe	1.00	1.00	0.90	0.90	1.45	1.50	0.71	0.71	1.45	1.50	0.64	0.64	0.00	0.00	-0.87	-57.67			
Former Soviet Union - 12																			
Ukraine	4.05	4.20	4.10	4.10	6.67	7.74	6.46	6.54	27.00	32.50	26.50	26.80	0.30	1.13	-5.70	-17.54			
Russia	2.64	2.40	2.60	2.70	6.00	6.92	5.10	5.19	15.83	16.60	13.25	14.00	0.75	5.66	-2.60	-15.66			
South Asia																			
India	10.74	11.24	10.80	11.20	3.54	3.35	3.52	3.57	38.09	37.67	38.00	40.00	2.00	5.26	2.34	6.20			
Pakistan	1.72	1.64	1.50	1.50	6.39	6.00	6.33	6.33	10.99	9.85	9.50	9.50	0.00	0.00	-0.35	-3.52			
Nepal	0.97	0.97	0.97	0.97	2.82	2.82	2.82	2.82	2.72	2.72	2.72	2.72	0.00	0.00	0.00	0.00			
Southeast Asia																			
Indonesia	3.50	3.70	3.60	3.60	3.54	3.43	3.56	3.56	12.40	12.70	12.80	12.80	0.00	0.00	0.10	0.79			
Philippines	2.54	2.49	2.55	2.55	3.28	3.25	3.25	3.25	8.32	8.10	8.30	8.30	0.00	0.00	0.20	2.47			
Vietnam	0.89	0.87	0.85	0.85	4.99	5.00	5.06	5.06	4.42	4.35	4.30	4.30	0.00	0.00	-0.05	-1.15			
Thailand	1.18	1.22	1.23	1.23	4.53	4.34	4.39	4.39	5.35	5.30	5.40	5.40	0.00	0.00	0.10	1.89			
Mexico	6.89	6.10	6.10	6.35	4.07	3.85	3.89	3.67	28.08	23.50	23.70	23.30	-0.40	-1.69	-0.20	-0.85			
Canada	1.44	1.52	1.45	1.45	10.07	10.15	10.59	10.59	14.54	15.42	15.35	15.35	0.00	0.00	-0.08	-0.49			
Turkey	0.53	0.65	0.56	0.56	12.83	12.92	12.50	12.68	6.80	8.40	7.00	7.10	0.10	1.43	-1.30	-15.48			
Others	26.85	26.78	26.62	26.62	2.53	2.74	2.66	2.66	67.93	73.35	70.76	70.71	-0.05	-0.07	-2.64	-3.59			

World and Selected Countries and Regions

Table 05 Barley Area, Yield, and Production

Country / Region	Area (Million hectares)				Yield (Metric tons per hectare)				Production (Million metric tons)				Change in Production			
	Prel.		2024/25 Proj.		Prel.		2024/25 Proj.		Prel.		2024/25 Proj.		From last month		From last year	
	2022/23	2023/24	Feb	Mar	2022/23	2023/24	Feb	Mar	2022/23	2023/24	Feb	Mar	MMT	Percent	MMT	Percent
World	47.13	47.08	45.79	45.98	3.20	3.05	3.11	3.12	150.97	143.37	142.47	143.61	1.14	0.80	0.24	0.17
United States	0.98	1.04	0.76	0.76	3.86	3.89	4.13	4.13	3.79	4.05	3.13	3.13	0.00	0.00	-0.92	-22.70
Total Foreign	46.15	46.04	45.03	45.22	3.19	3.03	3.09	3.11	147.19	139.32	139.34	140.48	1.14	0.82	1.16	0.83
European Union	10.32	10.37	10.32	10.32	5.02	4.61	4.88	4.88	51.83	47.81	50.40	50.40	0.00	0.00	2.59	5.41
United Kingdom	1.12	1.14	1.20	1.20	6.62	6.12	6.00	6.00	7.39	6.96	7.20	7.20	0.00	0.00	0.24	3.40
Former Soviet Union - 12																
Russia	7.75	7.65	6.60	6.60	2.77	2.68	2.46	2.46	21.50	20.50	16.25	16.25	0.00	0.00	-4.25	-20.73
Ukraine	1.95	1.68	1.60	1.60	3.13	3.78	3.69	3.63	6.10	6.35	5.90	5.80	-0.10	-1.69	-0.55	-8.66
Kazakhstan	2.18	2.43	2.28	2.28	1.51	1.08	1.68	1.68	3.29	2.61	3.84	3.84	0.00	0.00	1.23	46.90
Belarus	0.40	0.40	0.40	0.40	2.75	2.75	3.00	3.00	1.10	1.10	1.20	1.20	0.00	0.00	0.10	9.09
Azerbaijan	0.39	0.36	0.36	0.36	2.85	2.99	3.06	3.06	1.10	1.07	1.10	1.10	0.00	0.00	0.03	3.09
Canada	2.64	2.70	2.39	2.39	3.79	3.29	3.40	3.40	9.99	8.91	8.14	8.14	0.00	0.00	-0.76	-8.55
Australia	4.13	4.20	4.44	4.62	3.43	2.57	2.64	2.87	14.14	10.80	11.70	13.27	1.57	13.38	2.47	22.82
Middle East																
Turkey	3.80	3.70	3.75	3.75	1.95	2.16	1.87	1.87	7.40	8.00	7.00	7.00	0.00	0.00	-1.00	-12.50
Iran	1.65	1.65	1.60	1.60	1.82	1.82	1.94	1.94	3.00	3.00	3.10	3.10	0.00	0.00	0.10	3.33
Iraq	0.21	0.16	1.00	1.00	1.12	1.29	1.40	1.40	0.24	0.20	1.40	1.40	0.00	0.00	1.20	600.00
Syria	1.12	1.43	1.10	1.10	0.16	0.88	1.09	1.09	0.18	1.26	1.20	1.20	0.00	0.00	-0.06	-4.38
Africa																
Ethiopia	0.98	0.98	0.98	0.98	2.22	2.50	2.54	2.54	2.18	2.45	2.49	2.49	0.00	0.00	0.04	1.43
Morocco	1.14	1.17	0.80	0.80	0.61	1.15	0.83	0.83	0.70	1.35	0.66	0.66	0.00	0.00	-0.69	-51.11
Algeria	1.03	1.03	1.03	1.03	1.37	1.00	1.17	1.17	1.40	1.03	1.20	1.20	0.00	0.00	0.18	17.07
Tunisia	0.30	0.11	0.35	0.35	1.74	0.83	1.57	1.57	0.52	0.09	0.55	0.55	0.00	0.00	0.46	511.11
South Africa	0.10	0.11	0.10	0.10	2.99	3.49	3.75	3.70	0.30	0.38	0.38	0.37	0.00	-0.27	0.00	-0.80
South America																
Argentina	1.59	1.30	1.28	1.28	2.95	3.92	4.00	3.76	4.70	5.10	5.10	4.80	-0.30	-5.88	-0.30	-5.88
Uruguay	0.21	0.19	0.23	0.23	4.25	4.87	4.35	4.35	0.90	0.92	1.00	1.00	0.00	0.00	0.09	9.29
Brazil	0.13	0.14	0.12	0.12	3.89	2.90	3.83	3.56	0.50	0.39	0.46	0.44	-0.02	-4.78	0.05	12.02
India	0.45	0.63	0.55	0.55	3.03	3.05	3.08	3.08	1.37	1.91	1.70	1.70	0.00	0.00	-0.21	-11.19
China	0.56	0.50	0.50	0.50	3.91	4.00	4.00	4.00	2.19	2.00	2.00	2.00	0.00	0.00	0.00	0.00
Mexico	0.30	0.29	0.29	0.29	2.69	2.69	2.69	2.69	0.80	0.78	0.78	0.78	0.00	0.00	0.00	0.00
Afghanistan	0.06	0.08	0.07	0.07	1.53	1.38	1.43	1.43	0.10	0.11	0.10	0.10	0.00	0.00	-0.01	-9.09
Others	1.67	1.67	1.70	1.70	2.58	2.55	2.65	2.65	4.30	4.25	4.50	4.50	0.00	0.00	0.24	5.67

World and Selected Countries and Regions

Table 06 Oats Area, Yield, and Production

Country / Region	Area (Million hectares)				Yield (Metric tons per hectare)				Production (Million metric tons)				Change in Production			
	2022/23	Prel.	2024/25 Proj.		2022/23	Prel.	2024/25 Proj.		2022/23	Prel.	2024/25 Proj.		From last month		From last year	
		2023/24	Feb	Mar		2023/24	Feb	Mar		2023/24	Feb	Mar	MMT	Percent	MMT	Percent
World	9.39	8.42	8.71	8.70	2.72	2.31	2.56	2.59	25.52	19.46	22.34	22.49	0.16	0.70	3.03	15.57
United States	0.36	0.34	0.36	0.36	2.35	2.46	2.74	2.74	0.84	0.83	0.98	0.98	0.00	0.00	0.16	18.84
Total Foreign	9.03	8.08	8.35	8.34	2.73	2.31	2.56	2.58	24.68	18.63	21.35	21.51	0.16	0.73	2.87	15.42
European Union	2.35	2.30	2.49	2.49	3.19	2.60	3.07	3.07	7.49	5.97	7.63	7.63	0.00	0.00	1.65	27.70
Former Soviet Union - 12																
Russia	2.13	1.77	1.60	1.60	2.11	1.86	1.88	1.88	4.50	3.30	3.00	3.00	0.00	0.00	-0.30	-9.09
Ukraine	0.15	0.17	0.17	0.17	2.47	2.53	2.35	2.71	0.38	0.43	0.40	0.46	0.06	15.00	0.03	6.98
Belarus	0.16	0.16	0.16	0.16	2.42	2.26	2.06	2.06	0.38	0.35	0.32	0.32	0.00	0.00	-0.03	-8.57
Kazakhstan	0.20	0.19	0.19	0.19	1.16	0.79	1.71	1.71	0.23	0.15	0.33	0.33	0.00	0.00	0.18	120.00
Canada	1.40	0.83	0.99	0.99	3.73	3.20	3.38	3.38	5.23	2.64	3.36	3.36	0.00	0.00	0.72	27.05
South America																
Argentina	0.26	0.28	0.30	0.30	1.67	2.03	2.00	2.00	0.43	0.57	0.60	0.60	0.00	0.00	0.04	6.19
Brazil	0.50	0.52	0.49	0.49	2.39	1.89	2.16	2.14	1.19	0.98	1.06	1.04	-0.02	-1.70	0.06	5.89
Chile	0.07	0.09	0.10	0.10	4.63	5.39	4.75	4.75	0.33	0.46	0.48	0.48	0.00	0.00	0.02	3.71
Uruguay	0.02	0.02	0.02	0.02	2.40	2.44	2.00	2.00	0.04	0.04	0.04	0.04	0.00	0.00	0.00	2.56
Oceania																
Australia	0.75	0.70	0.73	0.71	2.13	1.43	1.66	1.84	1.59	1.00	1.20	1.31	0.11	9.25	0.31	31.10
New Zealand	0.01	0.00	0.00	0.00	6.60	7.50	5.75	5.75	0.03	0.03	0.02	0.02	0.00	0.00	-0.01	-23.33
China	0.43	0.46	0.47	0.47	1.84	1.83	1.83	1.83	0.79	0.84	0.85	0.85	0.00	0.00	0.01	1.19
Africa																
Algeria	0.08	0.08	0.08	0.08	1.31	1.31	1.31	1.31	0.11	0.11	0.11	0.11	0.00	0.00	0.00	0.00
Morocco	0.01	0.02	0.02	0.02	0.31	0.40	0.40	0.40	0.00	0.01	0.01	0.01	0.00	0.00	0.00	0.00
South Africa	0.03	0.03	0.03	0.03	1.04	1.46	1.33	1.39	0.03	0.04	0.04	0.04	0.00	7.50	0.00	4.88
Other Europe																
United Kingdom	0.18	0.17	0.20	0.20	5.72	4.97	5.00	5.00	1.01	0.83	1.00	1.00	0.00	0.00	0.17	20.48
Norway	0.06	0.07	0.07	0.07	4.62	4.29	4.29	4.29	0.29	0.30	0.30	0.30	0.00	0.00	0.00	0.00
Serbia	0.02	0.02	0.02	0.02	2.80	3.00	3.00	3.00	0.04	0.06	0.06	0.06	0.00	0.00	0.00	0.00
Albania	0.02	0.02	0.02	0.02	2.27	2.27	2.27	2.27	0.03	0.03	0.03	0.03	0.00	0.00	0.00	0.00
Bosnia and Herzegovina	0.01	0.01	0.01	0.01	4.00	3.43	3.43	3.43	0.04	0.02	0.02	0.02	0.00	0.00	0.00	0.00
Turkey	0.14	0.13	0.13	0.13	2.64	2.60	2.62	2.62	0.37	0.33	0.34	0.34	0.00	0.00	0.02	4.62
Mexico	0.05	0.03	0.04	0.04	2.22	2.20	2.00	2.00	0.11	0.06	0.08	0.08	0.00	0.00	0.03	45.45
Others	0.03	0.06	0.05	0.05	1.63	1.68	1.78	1.78	0.05	0.09	0.08	0.08	0.00	0.00	-0.01	-12.77

World and Selected Countries and Regions

Table 07 Rye Area, Yield, and Production

Country / Region	Area (Million hectares)				Yield (Metric tons per hectare)				Production (Million metric tons)				Change in Production			
	Prel.		2024/25 Proj.		Prel.		2024/25 Proj.		Prel.		2024/25 Proj.		From last month		From last year	
	2022/23	2023/24	Feb	Mar	2022/23	2023/24	Feb	Mar	2022/23	2023/24	Feb	Mar	MMT	Percent	MMT	Percent
World	3.69	3.66	3.32	3.32	3.29	3.20	3.20	3.22	12.15	11.71	10.62	10.69	0.07	0.66	-1.02	-8.72
United States	0.14	0.13	0.16	0.16	2.26	2.03	2.29	2.29	0.32	0.26	0.37	0.37	0.00	0.00	0.11	41.67
Total Foreign	3.55	3.53	3.15	3.16	3.33	3.24	3.25	3.26	11.83	11.44	10.24	10.31	0.07	0.68	-1.13	-9.88
European Union	1.77	1.88	1.74	1.74	4.26	4.06	4.03	4.03	7.55	7.64	7.02	7.02	0.00	0.00	-0.62	-8.07
Former Soviet Union - 12																
Russia	0.88	0.79	0.58	0.58	2.27	2.15	2.00	2.07	2.00	1.70	1.15	1.20	0.05	4.35	-0.50	-29.41
Belarus	0.30	0.31	0.32	0.32	2.50	2.52	2.38	2.38	0.75	0.78	0.76	0.76	0.00	0.00	-0.02	-2.56
Ukraine	0.10	0.08	0.07	0.07	3.15	3.00	2.86	3.14	0.32	0.24	0.20	0.22	0.02	10.00	-0.02	-8.33
Kazakhstan	0.03	0.02	0.02	0.02	1.76	0.86	1.55	1.55	0.06	0.02	0.03	0.03	0.00	0.00	0.01	72.22
Turkey	0.10	0.11	0.11	0.11	2.79	2.91	2.91	2.91	0.27	0.32	0.32	0.32	0.00	0.00	0.00	0.00
Canada	0.15	0.12	0.12	0.12	3.42	3.09	3.60	3.60	0.52	0.36	0.42	0.42	0.00	0.00	0.06	17.60
South America																
Chile	0.00	0.00	0.00	0.00	5.00	0.00	0.00	0.00	0.01	0.00	0.00	0.00	0.00	100.00	0.00	100.00
Argentina	0.11	0.12	0.11	0.11	1.66	1.85	1.76	1.76	0.18	0.22	0.19	0.19	0.00	0.00	-0.03	-15.14
Other Europe																
Bosnia and Herzegovina	0.00	0.00	0.00	0.00	3.00	3.00	3.00	3.00	0.01	0.01	0.01	0.01	0.00	0.00	0.00	-33.33
Switzerland	0.00	0.00	0.00	0.00	5.00	5.00	5.00	5.00	0.01	0.01	0.01	0.01	0.00	0.00	0.00	0.00
Serbia	0.01	0.01	0.01	0.01	3.00	3.33	3.00	3.00	0.02	0.02	0.02	0.02	0.00	0.00	0.00	-10.00
Australia	0.05	0.05	0.05	0.05	0.71	0.71	0.71	0.71	0.03	0.03	0.03	0.03	0.00	0.00	0.00	0.00
Others	0.05	0.04	0.04	0.04	2.47	2.32	2.12	2.12	0.12	0.10	0.09	0.09	0.00	0.00	-0.01	-12.75

World and Selected Countries and Regions

Table 08 Sorghum Area, Yield, and Production

Country / Region	Area (Million hectares)				Yield (Metric tons per hectare)				Production (Million metric tons)				Change in Production			
	Prel.		2024/25 Proj.		Prel.		2024/25 Proj.		Prel.		2024/25 Proj.		From last month		From last year	
	2022/23	2023/24	Feb	Mar	2022/23	2023/24	Feb	Mar	2022/23	2023/24	Feb	Mar	MMT	Percent	MMT	Percent
World	40.61	40.04	40.76	40.76	1.42	1.46	1.50	1.50	57.48	58.36	61.06	61.23	0.17	0.28	2.87	4.91
United States	1.85	2.48	2.27	2.27	2.58	3.26	3.85	3.85	4.77	8.07	8.73	8.73	0.00	0.00	0.66	8.21
Total Foreign	38.77	37.56	38.49	38.49	1.36	1.34	1.36	1.36	52.71	50.29	52.33	52.50	0.17	0.32	2.21	4.38
Africa																
Nigeria	5.70	5.70	6.10	6.10	1.19	1.12	1.13	1.13	6.81	6.40	6.90	6.90	0.00	0.00	0.50	7.81
Ethiopia	1.55	1.48	1.65	1.65	2.67	2.71	2.48	2.48	4.14	4.01	4.10	4.10	0.00	0.00	0.09	2.24
Sudan	7.24	5.99	6.00	6.00	0.72	0.51	0.55	0.55	5.25	3.06	3.30	3.30	0.00	0.00	0.25	8.02
Burkina Faso	1.96	1.90	1.90	1.90	1.03	0.98	1.00	1.00	2.01	1.86	1.90	1.90	0.00	0.00	0.04	2.21
Mali	1.64	1.50	1.50	1.50	0.97	1.02	1.00	1.00	1.58	1.53	1.50	1.50	0.00	0.00	-0.03	-1.83
Niger	3.79	3.70	3.70	3.70	0.55	0.46	0.51	0.51	2.10	1.70	1.90	1.90	0.00	0.00	0.20	11.76
Cameroon	0.74	0.74	0.74	0.74	1.62	1.62	1.62	1.62	1.20	1.20	1.20	1.20	0.00	0.00	0.00	0.00
Tanzania	1.00	1.00	1.00	1.00	1.00	1.00	1.00	1.00	1.00	1.00	1.00	1.00	0.00	0.00	0.00	0.00
Egypt	0.15	0.15	0.15	0.15	5.00	5.20	5.27	5.27	0.75	0.78	0.79	0.79	0.00	0.00	0.01	1.28
Uganda	0.32	0.32	0.32	0.32	0.90	0.83	0.84	0.84	0.29	0.27	0.27	0.27	0.00	0.00	0.00	1.50
Ghana	0.31	0.31	0.31	0.31	1.29	1.42	1.13	1.13	0.40	0.44	0.35	0.35	0.00	0.00	-0.09	-20.27
Mozambique	0.29	0.27	0.28	0.28	0.51	0.55	0.33	0.33	0.15	0.15	0.09	0.09	0.00	0.00	-0.06	-40.00
South Africa	0.03	0.04	0.04	0.04	2.76	2.25	3.25	3.25	0.09	0.09	0.13	0.13	0.00	0.00	0.04	44.44
Mexico	1.40	1.29	1.20	1.20	3.50	3.49	3.50	3.50	4.89	4.49	4.20	4.20	0.00	0.00	-0.29	-6.35
South America																
Argentina	0.50	0.62	0.85	0.85	3.22	3.99	4.12	4.12	1.61	2.49	3.50	3.50	0.00	0.00	1.01	40.73
Brazil	1.42	1.46	1.60	1.60	3.38	3.03	3.13	3.13	4.79	4.43	5.00	5.00	0.00	0.00	0.57	12.97
South Asia																
India	3.54	4.08	4.00	4.00	1.08	1.16	1.10	1.10	3.81	4.74	4.40	4.40	0.00	0.00	-0.34	-7.11
Pakistan	0.06	0.05	0.05	0.05	0.83	0.83	0.82	0.82	0.05	0.04	0.04	0.04	0.00	0.00	0.00	5.13
China	0.68	0.63	0.63	0.63	4.58	4.76	4.76	4.76	3.09	3.00	3.00	3.00	0.00	0.00	0.00	0.00
Australia	0.69	0.60	0.57	0.57	3.84	3.67	3.68	4.04	2.64	2.20	2.10	2.30	0.20	9.52	0.10	4.55
European Union	0.13	0.15	0.22	0.22	4.18	5.44	5.16	5.16	0.52	0.81	1.11	1.11	0.00	0.00	0.30	37.04
Others	5.65	5.59	5.69	5.69	0.98	1.01	0.97	0.97	5.54	5.63	5.55	5.52	-0.03	-0.58	-0.12	-2.04

World and Selected Countries and Regions

Table 09 Rice Area, Yield, and Production
World and Selected Countries and Regions

Country / Region	Area (Million hectares)				Yield (Metric tons per hectare)				Production (Million metric tons)				Change in Production			
	Prel.		2024/25 Proj.		Prel.		2024/25 Proj.		Prel.		2024/25 Proj.		From last month		From last year	
	2022/23	2023/24	Feb	Mar	2022/23	2023/24	Feb	Mar	2022/23	2023/24	Feb	Mar	MMT	Percent	MMT	Percent
World	165.69	166.10	168.59	168.59	4.66	4.70	4.72	4.72	516.70	522.31	532.67	532.66	0.00	0.00	10.35	1.98
United States	0.88	1.16	1.16	1.16	8.28	8.56	8.69	8.69	5.08	6.92	7.05	7.05	0.00	0.00	0.13	1.89
Total Foreign	164.81	164.94	167.43	167.43	4.64	4.67	4.69	4.69	511.61	515.39	525.61	525.61	0.00	0.00	10.22	1.98
East Asia																
China	29.45	28.95	29.01	29.01	7.08	7.14	7.15	7.15	145.95	144.62	145.28	145.28	0.00	0.00	0.66	0.45
Japan	1.50	1.48	1.46	1.46	6.86	6.78	6.92	6.92	7.48	7.30	7.35	7.35	0.00	0.00	0.05	0.73
Korea, South	0.73	0.71	0.70	0.70	6.87	6.92	6.80	6.80	3.76	3.70	3.59	3.59	0.00	0.00	-0.12	-3.16
Korea, North	0.54	0.53	0.54	0.54	3.87	4.18	4.18	4.18	1.36	1.45	1.48	1.48	0.00	0.00	0.03	1.86
South Asia																
India	47.83	47.83	50.00	50.00	4.26	4.32	4.35	4.35	135.76	137.83	145.00	145.00	0.00	0.00	7.18	5.21
Bangladesh	11.60	11.75	11.40	11.40	4.70	4.72	4.82	4.82	36.35	37.00	36.60	36.60	0.00	0.00	-0.40	-1.08
Pakistan	2.98	3.64	3.80	3.80	3.69	4.07	3.95	3.95	7.32	9.87	10.00	10.00	0.00	0.00	0.13	1.33
Nepal	1.45	1.44	1.45	1.45	3.79	3.98	3.79	3.79	3.65	3.81	3.67	3.67	0.00	0.00	-0.15	-3.83
Sri Lanka	1.15	1.14	1.16	1.16	3.61	3.97	4.18	4.18	2.83	3.09	3.30	3.30	0.00	0.00	0.21	6.93
Southeast Asia																
Indonesia	11.30	11.00	11.20	11.20	4.72	4.73	4.78	4.78	33.90	33.02	34.00	34.00	0.00	0.00	0.98	2.97
Vietnam	7.12	6.90	6.95	6.95	6.10	6.10	6.10	6.10	27.14	26.30	26.50	26.50	0.00	0.00	0.20	0.76
Thailand	11.07	10.65	10.70	10.70	2.86	2.85	2.85	2.85	20.91	20.00	20.10	20.10	0.00	0.00	0.10	0.50
Burma	6.80	6.80	6.80	6.80	2.71	2.73	2.72	2.72	11.80	11.90	11.85	11.85	0.00	0.00	-0.05	-0.42
Philippines	4.85	4.74	4.60	4.60	4.13	4.12	4.14	4.14	12.63	12.33	12.00	12.00	0.00	0.00	-0.33	-2.64
Cambodia	3.47	3.58	3.64	3.64	3.31	3.39	3.32	3.32	7.00	7.40	7.38	7.38	0.00	0.00	-0.02	-0.31
Laos	0.96	0.95	0.90	0.90	3.23	3.21	3.19	3.19	1.95	1.92	1.81	1.81	0.00	0.00	-0.11	-5.73
Malaysia	0.66	0.65	0.66	0.66	3.99	3.86	4.08	4.08	1.70	1.62	1.75	1.75	0.00	0.00	0.13	8.02
South America																
Brazil	1.48	1.61	1.70	1.70	6.78	6.58	6.92	6.92	6.82	7.20	8.00	8.00	0.00	0.00	0.80	11.13
Peru	0.42	0.43	0.43	0.43	8.34	8.52	8.60	8.60	2.40	2.50	2.55	2.55	0.00	0.00	0.05	2.00
Africa																
Egypt	0.60	0.63	0.67	0.67	8.70	8.70	8.44	8.44	3.60	3.78	3.90	3.90	0.00	0.00	0.12	3.17
Madagascar	1.60	1.60	1.60	1.60	2.87	2.88	2.88	2.88	2.93	2.94	2.94	2.94	0.00	0.00	0.00	0.00
Nigeria	3.50	3.60	3.50	3.50	2.45	2.47	2.37	2.37	5.41	5.61	5.23	5.23	0.00	0.00	-0.38	-6.74
European Union	0.33	0.35	0.39	0.39	6.09	6.50	6.62	6.62	1.29	1.44	1.67	1.67	0.00	0.00	0.24	16.45
Iran	0.57	0.57	0.57	0.57	5.32	5.30	5.32	5.32	2.00	2.00	2.00	2.00	0.00	0.00	0.01	0.25
Others	12.87	13.43	13.60	13.60	3.03	3.02	3.09	3.09	25.67	26.78	27.68	27.68	0.00	-0.01	0.89	3.34

Yield is on a rough basis, before the milling process. Production is on a milled basis, after the milling process.

Table 10 Total Oilseed Area, Yield, and Production

World and Selected Countries and Regions

Country / Region	Area (Million hectares)				Yield (Metric tons per hectare)				Production (Million metric tons)				Change in Production						
	2022/23	Prel.		2024/25 Proj.		2022/23	Prel.		2024/25 Proj.		2022/23	Prel.		2024/25 Proj.		From last month		From last year	
		2023/24	Feb	Mar	2023/24		Feb	Mar	2023/24	Feb		Mar	MMT	Percent	MMT	Percent			
World Total	--	--	--	--	--	--	--	--	--	638.35	657.09	677.70	679.37	1.67	0.25	22.28	3.39		
Total Foreign	--	--	--	--	--	--	--	--	--	512.60	534.93	549.22	550.89	1.67	0.30	15.96	2.98		
Oilseed, Copra	--	--	--	--	--	--	--	--	--	6.00	6.21	5.81	5.81	0.00	0.00	-0.40	-6.50		
Oilseed, Palm Kernel	--	--	--	--	--	--	--	--	--	19.75	19.68	20.59	20.59	0.00	0.00	0.91	4.62		
Major Oilseeds	268.24	271.26	275.91	276.26	2.28	2.33	2.36	2.36	612.60	631.21	651.31	652.98	1.67	0.26	21.77	3.45			
United States	39.91	37.98	40.26	40.26	3.15	3.22	3.19	3.19	125.75	122.16	128.48	128.48	0.00	0.00	6.32	5.17			
Foreign Oilseeds	228.33	233.27	235.65	236.00	2.13	2.18	2.22	2.22	486.84	509.04	522.83	524.50	1.67	0.32	15.45	3.04			
South America	71.45	74.89	77.65	77.69	3.00	3.10	3.21	3.22	214.26	232.00	249.63	249.83	0.20	0.08	17.83	7.69			
Brazil	46.46	48.08	49.69	49.73	3.59	3.30	3.53	3.54	166.77	158.64	175.63	175.85	0.22	0.13	17.21	10.85			
Argentina	17.76	19.30	20.32	20.32	1.77	2.81	2.71	2.71	31.45	54.24	55.07	55.05	-0.02	-0.03	0.81	1.50			
Paraguay	3.79	3.90	4.02	4.02	2.77	2.88	2.73	2.73	10.47	11.22	10.94	10.94	0.00	0.00	-0.27	-2.43			
Bolivia	2.05	2.09	2.13	2.13	1.94	1.98	2.09	2.09	3.99	4.13	4.44	4.44	0.00	0.00	0.31	7.51			
Uruguay	1.28	1.44	1.39	1.39	1.00	2.44	2.34	2.34	1.28	3.51	3.25	3.25	0.00	0.00	-0.26	-7.38			
China	26.44	26.22	26.08	26.08	2.60	2.62	2.66	2.67	68.72	68.57	69.35	69.64	0.29	0.42	1.07	1.56			
South Asia	43.59	44.49	43.76	43.76	1.04	1.03	1.07	1.07	45.22	45.93	46.72	46.63	-0.09	-0.19	0.70	1.52			
India	40.19	40.28	39.88	39.88	1.03	1.00	1.05	1.05	41.29	40.37	42.01	42.01	0.00	0.00	1.64	4.06			
Pakistan	2.47	2.99	2.61	2.61	1.08	1.25	1.14	1.11	2.67	3.75	2.98	2.90	-0.09	-2.92	-0.85	-22.66			
European Union	12.32	12.29	11.95	11.95	2.61	2.71	2.45	2.45	32.13	33.34	29.27	29.27	0.00	0.00	-4.07	-12.20			
United Kingdom	0.37	0.39	0.28	0.28	3.73	3.11	3.13	3.13	1.36	1.22	0.88	0.88	0.00	0.00	-0.34	-28.04			
Former Soviet Union - 12	27.81	29.08	31.13	31.33	1.87	2.04	1.86	1.89	52.05	59.24	57.86	59.16	1.30	2.25	-0.08	-0.13			
Russia	14.74	14.85	16.25	16.45	1.80	1.89	1.74	1.74	26.55	28.10	28.25	28.60	0.35	1.24	0.50	1.78			
Ukraine	8.75	10.00	10.45	10.45	2.26	2.55	2.22	2.32	19.80	25.45	23.25	24.20	0.95	4.09	-1.25	-4.91			
Uzbekistan	1.07	1.05	1.02	1.02	1.24	1.15	1.22	1.22	1.33	1.21	1.25	1.25	0.00	0.00	0.04	3.23			
Canada	10.75	11.16	11.16	11.16	2.37	2.35	2.37	2.37	25.48	26.27	26.42	26.42	0.00	0.00	0.15	0.59			
Africa	24.62	24.69	23.63	23.66	1.04	0.97	1.05	1.03	25.67	24.01	24.71	24.25	-0.46	-1.85	0.25	1.03			
Nigeria	4.87	4.87	5.07	5.07	1.15	1.15	1.13	1.13	5.61	5.60	5.75	5.75	0.00	0.00	0.15	2.68			
South Africa	1.88	1.87	1.92	1.95	2.02	1.50	2.04	1.77	3.80	2.81	3.91	3.45	-0.46	-11.68	0.64	22.83			
Tanzania	1.36	1.47	1.44	1.44	0.91	0.89	0.87	0.87	1.23	1.31	1.25	1.25	0.00	0.00	-0.05	-4.13			
Southeast Asia	3.11	3.07	3.04	3.04	1.38	1.38	1.39	1.39	4.30	4.25	4.24	4.24	0.00	0.00	-0.02	-0.38			
Burma	1.98	1.97	1.98	1.98	1.22	1.24	1.26	1.26	2.40	2.44	2.50	2.50	0.00	0.00	0.06	2.25			
Indonesia	0.87	0.84	0.81	0.81	1.52	1.49	1.48	1.48	1.32	1.26	1.20	1.20	0.00	0.00	-0.06	-4.38			
Australia	4.61	4.04	3.96	4.03	2.17	1.84	1.78	1.84	9.99	7.42	7.06	7.41	0.36	5.03	0.00	-0.03			
Turkey	1.47	1.27	1.28	1.28	2.71	2.43	2.49	2.49	3.98	3.09	3.19	3.19	0.00	0.00	0.10	3.27			
Others	1.81	1.70	1.73	1.74	2.03	2.20	2.04	2.06	3.67	3.72	3.52	3.58	0.06	1.71	-0.15	-3.95			

World Total and Total Foreign: (Major Oilseeds plus copra and palm kernel) Major Oilseeds: (soybeans, sunflowerseeds, peanuts(inshell), cottonseed and rapeseed)

Table 11 Soybean Area, Yield, and Production

Country / Region	Area (Million hectares)				Yield (Metric tons per hectare)				Production (Million metric tons)				Change in Production			
	Prel.		2024/25 Proj.		Prel.		2024/25 Proj.		Prel.		2024/25 Proj.		From last month		From last year	
	2022/23	2023/24	Feb	Mar	2022/23	2023/24	Feb	Mar	2022/23	2023/24	Feb	Mar	MMT	Percent	MMT	Percent
World	137.33	140.47	146.43	146.45	2.75	2.81	2.87	2.87	378.16	394.97	420.76	420.76	0.00	0.00	25.80	6.53
United States	34.87	33.29	34.82	34.82	3.33	3.40	3.41	3.41	116.22	113.27	118.84	118.84	0.00	0.00	5.56	4.91
Total Foreign	102.46	107.18	111.61	111.62	2.56	2.63	2.71	2.70	261.94	281.69	301.93	301.93	0.00	0.00	20.23	7.18
South America																
Brazil	44.60	46.10	47.40	47.40	3.63	3.32	3.57	3.57	162.00	153.00	169.00	169.00	0.00	0.00	16.00	10.46
Argentina	14.40	16.37	17.30	17.30	1.74	2.95	2.83	2.83	25.00	48.21	49.00	49.00	0.00	0.00	0.79	1.64
Paraguay	3.65	3.75	3.85	3.85	2.81	2.93	2.78	2.78	10.25	11.00	10.70	10.70	0.00	0.00	-0.30	-2.73
Bolivia	1.82	1.85	1.88	1.88	2.01	2.05	2.19	2.19	3.67	3.80	4.10	4.10	0.00	0.00	0.30	7.89
Uruguay	0.93	1.31	1.30	1.30	0.75	2.51	2.38	2.38	0.70	3.29	3.10	3.10	0.00	0.00	-0.19	-5.86
East Asia																
China	10.24	10.47	10.33	10.33	1.98	1.99	2.00	2.00	20.28	20.84	20.65	20.65	0.00	0.00	-0.19	-0.91
Korea, South	0.06	0.07	0.07	0.07	2.03	2.07	2.06	2.06	0.13	0.14	0.14	0.14	0.00	0.00	0.00	0.71
Korea, North	0.16	0.16	0.16	0.16	1.15	1.15	1.15	1.15	0.18	0.18	0.18	0.18	0.00	0.00	0.00	0.00
Japan	0.15	0.16	0.16	0.16	1.60	1.59	1.64	1.64	0.24	0.25	0.26	0.26	0.00	0.00	0.01	4.86
India	13.08	13.20	13.50	13.50	0.95	0.90	0.93	0.93	12.41	11.88	12.58	12.58	0.00	0.00	0.71	5.95
Canada	2.12	2.26	2.29	2.29	3.09	3.09	3.30	3.30	6.54	6.98	7.57	7.57	0.00	0.00	0.59	8.41
Former Soviet Union - 12																
Russia	3.36	3.50	4.20	4.20	1.79	1.94	1.68	1.68	6.00	6.80	7.05	7.05	0.00	0.00	0.25	3.68
Ukraine	1.82	2.00	2.90	2.90	2.25	2.60	2.28	2.41	4.10	5.20	6.60	7.00	0.40	6.06	1.80	34.62
European Union	1.12	1.03	1.09	1.09	2.34	2.87	2.63	2.63	2.61	2.95	2.85	2.85	0.00	0.00	-0.10	-3.29
Southeast Asia																
Indonesia	0.33	0.32	0.31	0.31	1.18	1.17	1.16	1.16	0.39	0.38	0.36	0.36	0.00	0.00	-0.02	-4.00
Vietnam	0.03	0.03	0.03	0.03	1.60	1.61	1.62	1.62	0.05	0.05	0.04	0.04	0.00	0.00	0.00	-6.67
Thailand	0.03	0.03	0.03	0.03	1.63	1.63	1.63	1.63	0.05	0.05	0.05	0.05	0.00	0.00	0.00	0.00
Burma	0.13	0.12	0.12	0.12	1.04	1.04	1.04	1.04	0.13	0.13	0.12	0.12	0.00	0.00	-0.01	-4.00
Serbia	0.24	0.24	0.24	0.24	1.70	2.77	2.00	2.00	0.40	0.65	0.47	0.47	0.00	0.00	-0.18	-27.69
Mexico	0.12	0.09	0.13	0.14	1.52	2.06	1.68	2.00	0.18	0.19	0.21	0.27	0.06	28.57	0.09	45.95
Africa																
South Africa	1.15	1.15	1.16	1.16	2.41	1.60	2.42	2.01	2.77	1.84	2.80	2.33	-0.48	-16.96	0.49	26.36
Nigeria	1.20	1.15	1.35	1.35	0.98	1.00	0.96	0.96	1.18	1.15	1.30	1.30	0.00	0.00	0.15	13.04
Zambia	0.38	0.38	0.38	0.38	1.27	1.27	1.27	1.27	0.48	0.48	0.48	0.48	0.00	0.00	0.00	0.00
Uganda	0.22	0.24	0.25	0.25	0.80	0.81	0.82	0.82	0.17	0.19	0.20	0.20	0.00	0.00	0.01	3.09
Middle East																
Iran	0.08	0.07	0.07	0.07	2.27	2.36	2.43	2.43	0.17	0.17	0.17	0.17	0.00	0.00	0.01	3.03
Turkey	0.04	0.03	0.04	0.04	4.14	4.12	4.29	4.29	0.15	0.14	0.15	0.15	0.00	0.00	0.01	7.14
Others	1.03	1.12	1.12	1.13	1.67	1.60	1.60	1.61	1.72	1.78	1.80	1.81	0.01	0.78	0.03	1.57

World and Selected Countries and Regions

Table 12 Cottonseed Area, Yield, and Production

Country / Region	Area (Million hectares)				Yield (Metric tons per hectare)				Production (Million metric tons)				Change in Production			
	Prel.		2024/25 Proj.		Prel.		2024/25 Proj.		Prel.		2024/25 Proj.		From last month		From last year	
	2022/23	2023/24	Feb	Mar	2022/23	2023/24	Feb	Mar	2022/23	2023/24	Feb	Mar	MMT	Percent	MMT	Percent
World	31.13	30.53	30.25	30.25	1.36	1.35	1.45	1.45	42.36	41.30	43.72	43.91	0.19	0.43	2.61	6.32
United States	2.95	2.61	3.35	3.35	1.36	1.27	1.19	1.19	4.01	3.31	3.99	3.99	0.00	0.00	0.69	20.78
Total Foreign	28.18	27.92	26.90	26.90	1.36	1.36	1.48	1.48	38.36	38.00	39.73	39.92	0.19	0.47	1.92	5.06
South Asia																
India	12.93	12.68	11.80	11.80	0.86	0.85	0.90	0.90	11.17	10.78	10.61	10.61	0.00	0.00	-0.17	-1.57
Pakistan	1.80	2.40	2.00	2.00	0.94	1.26	1.13	1.08	1.69	3.03	2.25	2.17	-0.09	-3.86	-0.87	-28.56
China	3.10	2.85	2.90	2.90	3.89	3.76	4.19	4.29	12.05	10.72	12.15	12.44	0.29	2.42	1.73	16.09
Former Soviet Union - 12																
Uzbekistan	1.05	1.03	1.00	1.00	1.19	1.10	1.18	1.18	1.25	1.14	1.18	1.18	0.00	0.00	0.04	3.43
Turkmenistan	0.50	0.50	0.50	0.50	0.63	0.63	0.63	0.63	0.31	0.31	0.31	0.31	0.00	0.00	0.00	0.00
Tajikistan	0.18	0.17	0.18	0.18	1.31	1.16	1.08	1.08	0.24	0.19	0.20	0.20	0.00	0.00	0.00	1.56
Kazakhstan	0.13	0.12	0.11	0.11	0.87	1.00	0.97	0.97	0.11	0.12	0.10	0.10	0.00	0.00	-0.01	-11.97
South America																
Brazil	1.60	1.66	1.97	1.97	2.43	2.91	2.86	2.86	3.89	4.84	5.64	5.64	0.00	0.00	0.81	16.68
Argentina	0.51	0.62	0.60	0.60	0.84	0.98	1.06	1.03	0.43	0.61	0.64	0.62	-0.02	-2.98	0.01	1.48
Middle East																
Turkey	0.56	0.44	0.47	0.47	2.88	2.38	2.81	2.81	1.60	1.05	1.31	1.31	0.00	0.00	0.26	24.98
Syria	0.03	0.03	0.03	0.03	2.23	2.23	2.23	2.23	0.07	0.07	0.07	0.07	0.00	0.00	0.00	0.00
Iran	0.12	0.10	0.10	0.10	1.52	1.18	1.35	1.35	0.18	0.12	0.14	0.14	0.00	0.00	0.02	14.41
Australia	0.65	0.51	0.60	0.60	2.24	2.48	2.26	2.26	1.45	1.25	1.35	1.35	0.00	0.00	0.10	7.98
European Union	0.31	0.25	0.27	0.27	1.70	1.31	1.47	1.47	0.53	0.33	0.40	0.40	0.00	0.00	0.07	20.66
Africa																
Burkina Faso	0.62	0.46	0.35	0.35	0.35	0.46	0.48	0.48	0.21	0.21	0.17	0.17	0.00	0.00	-0.05	-21.80
Mali	0.60	0.71	0.63	0.63	0.35	0.53	0.48	0.48	0.21	0.38	0.30	0.30	0.00	0.00	-0.07	-19.47
Cameroon	0.23	0.24	0.23	0.23	1.29	1.54	1.48	1.48	0.30	0.37	0.34	0.34	0.00	0.00	-0.03	-8.11
Cote d'Ivoire	0.41	0.40	0.37	0.37	0.29	0.44	0.53	0.53	0.12	0.17	0.20	0.20	0.00	0.00	0.02	12.07
Benin	0.57	0.51	0.55	0.55	0.64	0.73	0.76	0.76	0.36	0.37	0.42	0.42	0.00	0.00	0.04	11.53
Tanzania	0.36	0.47	0.44	0.44	0.37	0.44	0.35	0.35	0.13	0.21	0.15	0.15	0.00	0.00	-0.05	-26.21
Egypt	0.14	0.10	0.13	0.13	0.92	0.96	0.99	0.99	0.13	0.10	0.13	0.13	0.00	0.00	0.03	34.38
Nigeria	0.27	0.27	0.27	0.27	0.56	0.56	0.56	0.56	0.15	0.15	0.15	0.15	0.00	0.00	0.00	0.00
Uganda	0.08	0.06	0.07	0.07	1.16	1.51	1.48	1.48	0.09	0.08	0.10	0.10	0.00	0.00	0.01	15.66
Zimbabwe	0.24	0.24	0.24	0.24	0.34	0.34	0.34	0.34	0.08	0.08	0.08	0.08	0.00	0.00	0.00	0.00
Sudan	0.20	0.20	0.20	0.20	1.53	1.53	1.53	1.53	0.31	0.31	0.31	0.31	0.00	0.00	0.00	0.00
Mexico	0.20	0.13	0.12	0.12	2.70	2.25	2.35	2.35	0.54	0.30	0.28	0.28	0.00	0.00	-0.02	-5.05
Burma	0.19	0.18	0.19	0.19	1.26	1.24	1.24	1.24	0.23	0.23	0.24	0.24	0.00	0.00	0.01	4.42
Others	0.62	0.61	0.60	0.60	0.84	0.81	0.88	0.88	0.53	0.49	0.53	0.53	0.00	0.00	0.04	7.93

World and Selected Countries and Regions

Table 13 Peanut Area, Yield, and Production

Country / Region	Area (Million hectares)				Yield (Metric tons per hectare)				Production (Million metric tons)				Change in Production			
	2022/23	Prel.	2024/25 Proj.		2022/23	Prel.	2024/25 Proj.		2022/23	Prel.	2024/25 Proj.		From last month		From last year	
		2023/24	Feb	Mar		2023/24	Feb	Mar		2023/24	Feb	Mar	MMT	Percent	MMT	Percent
World	29.04	29.42	29.00	29.03	1.70	1.68	1.74	1.74	49.44	49.53	50.39	50.60	0.21	0.42	1.07	2.15
United States	0.56	0.63	0.71	0.71	4.50	4.23	4.11	4.11	2.51	2.67	2.93	2.93	0.00	0.00	0.26	9.71
Total Foreign	28.48	28.79	28.29	28.32	1.65	1.63	1.68	1.68	46.93	46.86	47.46	47.67	0.21	0.44	0.81	1.72
China	4.68	4.80	4.85	4.85	3.91	4.01	3.92	3.92	18.33	19.23	19.00	19.00	0.00	0.00	-0.23	-1.20
Africa																
Nigeria	3.40	3.45	3.45	3.45	1.26	1.25	1.25	1.25	4.28	4.30	4.30	4.30	0.00	0.00	0.00	0.00
Sudan	3.07	3.01	2.00	2.00	0.86	0.46	0.50	0.50	2.64	1.39	1.00	1.00	0.00	0.00	-0.39	-27.85
Senegal	1.23	1.25	1.25	1.25	1.23	1.38	1.36	1.36	1.50	1.73	1.70	1.70	0.00	0.00	-0.03	-1.62
Cameroon	0.43	0.43	0.43	0.43	1.40	1.40	1.40	1.40	0.60	0.60	0.60	0.60	0.00	0.00	0.00	0.00
Ghana	0.37	0.37	0.35	0.35	1.65	1.62	1.57	1.57	0.61	0.60	0.55	0.55	0.00	0.00	-0.05	-8.33
Chad	0.76	0.76	0.76	0.76	1.10	1.09	1.09	1.09	0.83	0.83	0.83	0.83	0.00	0.00	0.00	0.00
Malawi	0.40	0.40	0.40	0.40	0.88	0.88	0.88	0.88	0.35	0.35	0.35	0.35	0.00	0.00	0.00	0.00
Congo (Kinshasa)	0.53	0.53	0.53	0.53	0.91	0.91	0.91	0.91	0.48	0.48	0.48	0.48	0.00	0.00	0.00	0.00
Niger	0.97	0.92	0.92	0.92	0.69	0.65	0.65	0.65	0.67	0.60	0.60	0.60	0.00	0.00	0.00	0.00
Mali	0.43	0.43	0.43	0.43	1.04	1.00	1.00	1.00	0.44	0.43	0.43	0.43	0.00	0.00	0.00	0.00
Uganda	0.46	0.44	0.44	0.44	0.50	0.50	0.50	0.50	0.23	0.22	0.22	0.22	0.00	0.00	0.00	0.00
Burkina Faso	0.63	0.64	0.64	0.64	0.89	0.90	0.90	0.90	0.56	0.58	0.58	0.58	0.00	0.00	0.00	0.00
Guinea	0.90	0.90	0.90	0.90	1.14	1.11	1.11	1.11	1.03	1.00	1.00	1.00	0.00	0.00	0.00	0.00
Egypt	0.06	0.06	0.06	0.06	3.20	3.20	3.20	3.20	0.21	0.21	0.21	0.21	0.00	0.00	0.00	0.00
Central African Republic	0.13	0.13	0.13	0.13	1.15	1.15	1.15	1.15	0.15	0.15	0.15	0.15	0.00	0.00	0.00	0.00
South Africa	0.03	0.04	0.04	0.05	2.29	1.68	2.00	1.80	0.07	0.07	0.08	0.09	0.01	12.50	0.02	30.43
Mozambique	0.38	0.38	0.38	0.38	0.34	0.34	0.34	0.34	0.13	0.13	0.13	0.13	0.00	0.00	0.00	0.00
Cote d'Ivoire	0.17	0.17	0.17	0.17	1.47	1.45	1.45	1.45	0.24	0.24	0.24	0.24	0.00	0.00	0.00	0.00
Benin	0.16	0.24	0.18	0.18	1.03	0.74	0.97	0.97	0.16	0.18	0.18	0.18	0.00	0.00	0.00	-2.23
South Asia																
India	4.96	5.00	5.50	5.50	1.27	1.20	1.29	1.29	6.30	6.00	7.10	7.10	0.00	0.00	1.10	18.33
Pakistan	0.13	0.13	0.13	0.13	0.88	0.88	0.88	0.88	0.12	0.12	0.12	0.12	0.00	0.00	0.00	0.00
Southeast Asia																
Indonesia	0.54	0.52	0.50	0.50	1.72	1.69	1.68	1.68	0.93	0.88	0.84	0.84	0.00	0.00	-0.04	-4.55
Burma	1.07	1.07	1.08	1.08	1.55	1.59	1.63	1.63	1.65	1.70	1.75	1.75	0.00	0.00	0.05	2.94
Vietnam	0.15	0.15	0.14	0.14	2.63	2.62	2.64	2.64	0.40	0.38	0.37	0.37	0.00	0.00	-0.01	-3.39
Thailand	0.02	0.02	0.02	0.02	1.67	1.67	1.67	1.67	0.04	0.04	0.04	0.04	0.00	0.00	0.00	0.00
South America																
Argentina	0.37	0.43	0.45	0.45	2.59	3.43	3.11	3.11	0.96	1.48	1.40	1.40	0.00	0.00	-0.08	-5.60
Brazil	0.20	0.26	0.26	0.28	3.95	2.88	3.46	3.93	0.79	0.73	0.90	1.10	0.20	22.22	0.37	49.86
Mexico	0.05	0.05	0.05	0.05	1.76	1.74	1.70	1.70	0.09	0.08	0.09	0.09	0.00	0.00	0.01	6.25
Others	1.80	1.81	1.85	1.85	1.18	1.19	1.21	1.21	2.13	2.15	2.25	2.25	0.00	0.00	0.10	4.70

Table 14 Sunflowerseed Area, Yield, and Production

Country / Region	Area (Million hectares)				Yield (Metric tons per hectare)				Production (Million metric tons)				Change in Production			
	Prel.		2024/25 Proj.		Prel.		2024/25 Proj.		Prel.		2024/25 Proj.		From last month		From last year	
	2022/23	2023/24	Feb	Mar	2022/23	2023/24	Feb	Mar	2022/23	2023/24	Feb	Mar	MMT	Percent	MMT	Percent
World	28.30	27.94	27.90	28.14	1.87	2.01	1.83	1.85	52.78	56.02	51.12	52.02	0.89	1.74	-4.01	-7.15
United States	0.65	0.51	0.28	0.28	1.97	2.00	1.87	1.87	1.27	1.02	0.52	0.52	0.00	0.00	-0.50	-49.22
Total Foreign	27.65	27.43	27.62	27.86	1.86	2.01	1.83	1.85	51.51	55.00	50.60	51.50	0.89	1.76	-3.50	-6.37
Former Soviet Union - 12																
Russia	9.11	9.30	9.40	9.60	1.78	1.84	1.76	1.76	16.25	17.10	16.55	16.90	0.35	2.11	-0.20	-1.17
Ukraine	5.70	6.40	6.20	6.20	2.14	2.42	2.08	2.16	12.20	15.50	12.90	13.40	0.50	3.88	-2.10	-13.55
Kazakhstan	1.09	1.13	1.26	1.26	1.20	1.10	1.46	1.46	1.30	1.24	1.83	1.83	0.00	0.00	0.60	48.38
European Union	4.97	4.80	4.91	4.91	1.89	2.11	1.79	1.79	9.39	10.13	8.78	8.78	0.00	0.00	-1.35	-13.28
South America																
Argentina	2.45	1.84	1.95	1.95	2.05	2.11	2.05	2.05	5.02	3.90	4.00	4.00	0.00	0.00	0.11	2.70
Uruguay	0.01	0.00	0.01	0.01	0.91	1.25	1.00	1.00	0.01	0.01	0.01	0.01	0.00	0.00	0.01	100.00
Bolivia	0.23	0.24	0.25	0.25	1.39	1.38	1.36	1.36	0.32	0.33	0.34	0.34	0.00	0.00	0.01	3.03
Brazil	0.06	0.06	0.06	0.08	1.52	1.18	1.50	1.34	0.09	0.07	0.09	0.11	0.02	22.22	0.04	54.93
Paraguay	0.03	0.02	0.03	0.03	1.64	1.63	1.60	1.60	0.04	0.04	0.04	0.04	0.00	0.00	0.00	2.56
China	0.62	0.70	0.60	0.60	2.79	2.83	2.92	2.92	1.74	1.98	1.75	1.75	0.00	0.00	-0.23	-11.75
South Asia																
India	0.36	0.15	0.18	0.18	0.59	0.75	0.63	0.63	0.22	0.11	0.11	0.11	0.00	0.00	0.00	0.89
Pakistan	0.07	0.08	0.08	0.08	1.72	1.35	1.31	1.31	0.12	0.11	0.11	0.11	0.00	0.00	0.00	-2.78
Middle East																
Turkey	0.79	0.70	0.69	0.69	2.41	2.21	1.99	1.99	1.90	1.55	1.38	1.38	0.00	0.00	-0.18	-11.29
Iran	0.04	0.04	0.04	0.04	1.02	1.05	1.07	1.07	0.04	0.04	0.05	0.05	0.00	0.00	0.00	4.65
Israel	0.00	0.00	0.00	0.00	2.00	2.00	4.00	4.00	0.00	0.00	0.00	0.00	0.00	0.00	0.00	100.00
Africa																
Egypt	0.01	0.01	0.01	0.01	2.75	2.63	2.75	2.75	0.02	0.02	0.02	0.02	0.00	0.00	0.00	4.76
Morocco	0.03	0.02	0.02	0.02	1.11	1.27	1.17	1.17	0.03	0.03	0.03	0.03	0.00	0.00	0.00	0.00
South Africa	0.56	0.53	0.54	0.56	1.29	1.19	1.30	1.29	0.72	0.63	0.70	0.72	0.02	2.86	0.09	13.92
Burma	0.60	0.60	0.60	0.60	0.65	0.65	0.65	0.65	0.39	0.39	0.39	0.39	0.00	0.00	0.00	0.00
Canada	0.04	0.04	0.02	0.02	2.21	2.30	2.13	2.13	0.08	0.09	0.05	0.05	0.00	0.00	-0.04	-44.57
Australia	0.03	0.03	0.02	0.02	1.48	1.28	1.55	1.59	0.04	0.03	0.03	0.04	0.00	2.94	0.00	9.38
Others	0.86	0.73	0.75	0.75	1.83	2.33	1.92	1.92	1.58	1.70	1.44	1.44	0.00	0.00	-0.26	-15.22

World and Selected Countries and Regions

Table 15 Rapeseed Area, Yield, and Production

Country / Region	Area (Million hectares)				Yield (Metric tons per hectare)				Production (Million metric tons)				Change in Production			
	Prel.		2024/25 Proj.		Prel.		2024/25 Proj.		Prel.		2024/25 Proj.		From last month		From last year	
	2022/23	2023/24	Feb	Mar	2022/23	2023/24	Feb	Mar	2022/23	2023/24	Feb	Mar	MMT	Percent	MMT	Percent
World	42.44	42.90	42.34	42.40	2.12	2.08	2.02	2.02	89.86	89.39	85.31	85.69	0.38	0.44	-3.70	-4.13
United States	0.88	0.94	1.10	1.10	1.98	2.01	2.00	2.00	1.74	1.90	2.21	2.21	0.00	0.00	0.31	16.46
Total Foreign	41.56	41.96	41.23	41.30	2.12	2.09	2.02	2.02	88.12	87.49	83.11	83.48	0.38	0.45	-4.01	-4.58
European Union	5.92	6.21	5.69	5.69	3.31	3.21	3.03	3.03	19.61	19.93	17.24	17.24	0.00	0.00	-2.69	-13.51
United Kingdom	0.37	0.39	0.28	0.28	3.73	3.11	3.13	3.13	1.36	1.22	0.88	0.88	0.00	0.00	-0.34	-28.04
Switzerland	0.03	0.03	0.03	0.03	3.68	3.52	3.52	3.52	0.09	0.09	0.09	0.09	0.00	0.00	0.00	0.00
Canada	8.60	8.86	8.85	8.85	2.19	2.17	2.12	2.12	18.85	19.19	18.80	18.80	0.00	0.00	-0.39	-2.04
China	7.79	7.40	7.40	7.40	2.10	2.14	2.14	2.14	16.32	15.80	15.80	15.80	0.00	0.00	0.00	0.00
South Asia																
India	8.85	9.25	8.90	8.90	1.27	1.25	1.30	1.30	11.20	11.60	11.60	11.60	0.00	0.00	0.00	0.00
Pakistan	0.47	0.38	0.40	0.40	1.58	1.28	1.28	1.28	0.74	0.49	0.51	0.51	0.00	0.00	0.02	4.08
Bangladesh	0.81	1.10	1.10	1.10	1.30	1.46	1.30	1.30	1.05	1.61	1.43	1.43	0.00	0.00	-0.18	-11.01
Former Soviet Union - 12																
Russia	2.27	2.05	2.65	2.65	1.89	2.05	1.75	1.75	4.30	4.20	4.65	4.65	0.00	0.00	0.45	10.71
Ukraine	1.23	1.60	1.35	1.35	2.85	2.97	2.78	2.81	3.50	4.75	3.75	3.80	0.05	1.33	-0.95	-20.00
Belarus	0.36	0.40	0.48	0.48	2.22	2.25	2.25	2.25	0.80	0.90	1.08	1.08	0.00	0.00	0.18	20.00
Kazakhstan	0.13	0.09	0.15	0.15	1.48	1.32	1.92	1.92	0.19	0.12	0.29	0.29	0.00	0.00	0.16	132.52
Australia	3.90	3.48	3.30	3.37	2.16	1.74	1.70	1.76	8.44	6.05	5.60	5.94	0.34	6.07	-0.11	-1.82
South America																
Chile	0.03	0.03	0.04	0.04	3.73	4.39	3.86	3.86	0.12	0.12	0.14	0.14	0.00	0.00	0.01	9.76
Paraguay	0.07	0.07	0.08	0.08	1.77	1.50	1.53	1.53	0.12	0.11	0.12	0.12	0.00	0.00	0.01	9.52
Ethiopia	0.03	0.03	0.03	0.03	1.80	1.80	1.80	1.80	0.05	0.05	0.05	0.05	0.00	0.00	0.00	0.00
Others	0.72	0.60	0.52	0.52	1.91	2.11	2.11	2.08	1.38	1.27	1.10	1.09	-0.01	-1.09	-0.18	-14.11

World and Selected Countries and Regions

Table 16 Copra, Palm Kernel, and Palm Oil Production

Country / Region	Production (Million metric tons)				Change in Production			
	2022/23	Prel.	2024/25 Proj.		From last month		From last year	
		2023/24	Feb	Mar	MMT	Percent	MMT	Percent
Oilseed, Copra								
Philippines	2.60	2.90	2.50	2.50	0.00	0.00	-0.40	-13.79
Indonesia	1.68	1.69	1.68	1.68	0.00	0.00	-0.01	-0.59
India	0.94	0.94	0.94	0.94	0.00	0.00	0.00	0.00
Vietnam	0.29	0.29	0.29	0.29	0.00	0.00	0.00	0.00
Papua New Guinea	0.10	0.09	0.10	0.10	0.00	0.00	0.01	11.11
Sri Lanka	0.07	0.07	0.07	0.07	0.00	0.00	0.00	0.00
Thailand	0.07	0.07	0.07	0.07	0.00	0.00	0.00	0.00
Mexico	0.05	0.05	0.05	0.05	0.00	0.00	0.00	0.00
Cote d'Ivoire	0.03	0.03	0.03	0.03	0.00	0.00	0.00	0.00
Malaysia	0.03	0.03	0.03	0.03	0.00	0.00	0.00	0.00
World	6.00	6.21	5.81	5.81	0.00	0.00	-0.40	-6.44
Oilseed, Palm Kernel								
Indonesia	11.70	11.00	12.09	12.09	0.00	0.00	1.09	9.91
Malaysia	4.49	4.83	4.60	4.60	0.00	0.00	-0.23	-4.76
Nigeria	0.90	1.10	1.10	1.10	0.00	0.00	0.00	0.00
Thailand	0.86	0.94	0.96	0.96	0.00	0.00	0.02	2.13
Colombia	0.32	0.33	0.33	0.33	0.00	0.00	0.01	3.13
Guatemala	0.18	0.18	0.19	0.19	0.00	0.00	0.00	0.00
Papua New Guinea	0.17	0.18	0.18	0.18	0.00	0.00	0.00	0.00
Brazil	0.15	0.16	0.16	0.16	0.00	0.00	0.00	0.00
Honduras	0.16	0.16	0.16	0.16	0.00	0.00	0.00	0.00
Cameroon	0.15	0.15	0.15	0.15	0.00	0.00	0.00	0.00
World	19.75	19.68	20.59	20.59	0.00	0.00	0.91	4.62
Oil, Palm								
Indonesia	45.00	43.00	46.50	46.50	0.00	0.00	3.50	8.14
Malaysia	18.39	19.71	19.20	19.20	0.00	0.00	-0.51	-2.59
Thailand	3.33	3.60	3.70	3.70	0.00	0.00	0.10	2.78
Colombia	1.85	1.88	1.90	1.90	0.00	0.00	0.02	1.06
Nigeria	1.40	1.50	1.50	1.50	0.00	0.00	0.00	0.00
Guatemala	1.01	0.89	0.99	0.99	0.00	0.00	0.10	11.24
Papua New Guinea	0.80	0.82	0.83	0.83	0.00	0.00	0.01	1.22
Cote d'Ivoire	0.60	0.60	0.60	0.60	0.00	0.00	0.00	0.00
Honduras	0.60	0.60	0.60	0.60	0.00	0.00	0.00	0.00
Brazil	0.57	0.59	0.60	0.60	0.00	0.00	0.02	3.45
World	76.63	76.26	79.53	79.53	0.00	0.00	3.27	4.29

World and Selected Countries and Regions

Table 17 Cotton Area, Yield, and Production

Country / Region	Area (Million hectares)				Yield (Kilograms per hectare)				Production (Million 480 lb. bales)				Change in Production			
	Prel.		2024/25 Proj.		Prel.		2024/25 Proj.		Prel.		2024/25 Proj.		From last month		From last year	
	2022/23	2023/24	Feb	Mar	2022/23	2023/24	Feb	Mar	2022/23	2023/24	Feb	Mar	MBales	Percent	MBales	Percent
World	31.60	31.17	30.84	30.84	801	789	850	854	116.30	112.98	120.46	120.96	0.50	0.42	7.98	7.06
United States	2.95	2.61	3.35	3.35	1,068	1,008	938	938	14.47	12.07	14.41	14.41	0.00	0.00	2.35	19.46
Total Foreign	28.65	28.57	27.49	27.49	774	769	840	844	101.83	100.92	106.05	106.55	0.50	0.47	5.63	5.58
South Asia																
India	12.93	12.68	11.80	11.80	443	436	461	461	26.30	25.40	25.00	25.00	0.00	0.00	-0.40	-1.57
Pakistan	1.80	2.40	2.00	2.00	472	635	566	544	3.90	7.00	5.20	5.00	-0.20	-3.85	-2.00	-28.57
China	3.10	2.85	2.90	2.90	2,160	2,089	2,327	2,384	30.75	27.35	31.00	31.75	0.75	2.42	4.40	16.09
South America																
Brazil	1.60	1.66	1.97	1.97	1,595	1,911	1,879	1,879	11.72	14.57	17.00	17.00	0.00	0.00	2.43	16.68
Argentina	0.51	0.62	0.60	0.60	495	578	626	608	1.17	1.65	1.73	1.68	-0.05	-2.90	0.03	1.52
Paraguay	0.05	0.06	0.07	0.07	890	812	837	837	0.18	0.21	0.25	0.25	0.00	0.00	0.05	21.95
Africa																
Burkina Faso	0.62	0.46	0.35	0.35	273	361	379	379	0.78	0.77	0.60	0.60	0.00	0.00	-0.17	-21.57
Mali	0.60	0.71	0.63	0.63	269	407	373	373	0.74	1.33	1.07	1.07	0.00	0.00	-0.26	-19.43
Cote d'Ivoire	0.41	0.40	0.37	0.37	236	358	430	430	0.45	0.65	0.73	0.73	0.00	0.00	0.08	12.31
Benin	0.57	0.51	0.55	0.55	418	482	503	503	1.10	1.13	1.26	1.26	0.00	0.00	0.13	11.50
Egypt	0.14	0.10	0.13	0.13	661	686	712	712	0.43	0.32	0.43	0.43	0.00	0.00	0.11	34.92
Cameroon	0.23	0.24	0.23	0.23	563	671	644	644	0.60	0.74	0.68	0.68	0.00	0.00	-0.06	-8.11
Tanzania	0.36	0.47	0.44	0.44	184	220	173	173	0.31	0.47	0.35	0.35	0.00	0.00	-0.12	-25.53
Nigeria	0.27	0.27	0.27	0.27	282	282	282	282	0.35	0.35	0.35	0.35	0.00	0.00	0.00	0.00
Zimbabwe	0.24	0.24	0.24	0.24	195	195	195	195	0.22	0.22	0.22	0.22	0.00	0.00	0.00	0.00
Ethiopia	0.05	0.06	0.06	0.06	726	713	713	713	0.18	0.18	0.18	0.18	0.00	0.00	0.00	0.00
Former Soviet Union - 12																
Uzbekistan	1.05	1.03	1.00	1.00	663	613	653	653	3.20	2.90	3.00	3.00	0.00	0.00	0.10	3.45
Turkmenistan	0.50	0.50	0.50	0.50	348	348	348	348	0.80	0.80	0.80	0.80	0.00	0.00	0.00	0.00
Tajikistan	0.18	0.17	0.18	0.18	726	647	605	605	0.60	0.49	0.50	0.50	0.00	0.00	0.01	2.04
Kazakhstan	0.13	0.12	0.11	0.11	487	558	544	544	0.28	0.30	0.27	0.27	0.00	0.00	-0.04	-11.67
Middle East																
Turkey	0.56	0.44	0.47	0.47	1,922	1,583	1,873	1,873	4.90	3.20	4.00	4.00	0.00	0.00	0.80	25.00
Syria	0.03	0.03	0.03	0.03	1,161	1,161	1,161	1,161	0.16	0.16	0.16	0.16	0.00	0.00	0.00	0.00
Iran	0.12	0.10	0.10	0.10	977	762	871	871	0.53	0.35	0.40	0.40	0.00	0.00	0.05	14.29
Australia	0.65	0.51	0.60	0.60	1,943	2,156	1,960	1,960	5.80	5.00	5.40	5.40	0.00	0.00	0.40	8.00
Mexico	0.20	0.13	0.12	0.12	1,720	1,435	1,497	1,497	1.58	0.87	0.83	0.83	0.00	0.00	-0.05	-5.17
Burma	0.19	0.18	0.19	0.19	664	654	654	654	0.56	0.55	0.57	0.57	0.00	0.00	0.02	4.39
Others	1.58	1.65	1.62	1.62	590	525	551	551	4.27	3.98	4.09	4.09	0.00	0.00	0.11	2.79

World and Selected Countries and Regions

TABLE 18

The table below presents a record of the March projection and the final estimate. Using world wheat production as an example, the "root mean square error" means that chances are 2 out of 3 that the current forecast will not be above or below the final estimate by more than 0.5 percent. Chances are 9 out of 10 (90% confidence level) that the difference will not exceed 0.9 percent. The average difference between the March projection and the final estimate is 2.4 million tons, ranging from 0 million to 8.0 million tons. The March projection has been below the estimate 32 times and above 11 times.

RELIABILITY OF PRODUCTION PROJECTIONS 1/

COMMODITY AND REGION	Root mean square error	90 percent confidence interval	Difference between forecast and final estimate				
			Average	Smallest	Largest	Years	
						Below final	Above final
	Percent		---Million metric tons---				
WHEAT							
World	0.5	0.9	2.4	0.0	8.0	32	11
U.S.	0.2	0.3	0.1	0.0	0.3	19	12
Foreign	0.6	1.0	2.3	0.1	8.0	32	11
COARSE GRAINS 2/							
World	1.2	2.0	10.3	0.5	35.1	35	8
U.S.	0.2	0.3	0.2	0.0	1.8	17	12
Foreign	1.6	2.8	10.4	0.5	35.1	35	8
RICE (Milled)							
World	1.3	2.2	3.5	0.2	13.8	32	11
U.S.	1.2	2.0	0.0	0.0	0.2	11	6
Foreign	1.3	2.2	3.5	0.1	13.8	32	11
SOYBEANS							
World	2.1	3.6	3.3	0.1	12.4	22	21
U.S.	1.3	2.2	0.7	0.0	3.2	18	18
Foreign	3.5	5.9	3.2	0.1	12.6	23	20
COTTON			---Million 480-lb. bales---				
World	1.8	3.0	1.3	0.0	5.2	26	15
U.S.	0.9	1.6	0.1	0.0	0.3	14	28
Foreign	2.1	3.6	1.3	0.0	5.3	26	16
UNITED STATES			-----Million bushels-----				
<i>CORN</i>	0.2	0.3	6	0	72	1	7
<i>SORGHUM</i>	0.1	0.2	0	0	4	0	2
<i>BARLEY</i>	0.9	1.6	1	0	11	22	4
<i>OATS</i>	0.4	0.7	0	0	2	5	4

1/ Marketing years 1981/82 through 2023/24 for grains, soybeans, and cotton. Final for grains, soybeans, and cotton is defined as the first November estimate following the marketing year for 1981/82 through 2022/23, and for 2023/24 the last month's estimate.

2/ Includes corn, sorghum, barley, oats, rye, millet, and mixed grain