



United States
Department of
Agriculture

Foreign
Agricultural
Service

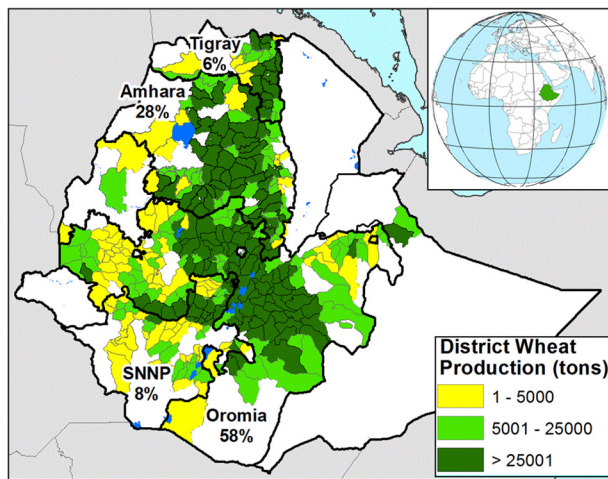
World Agricultural Production

Circular Series
WAP 10-23
October 2023

Ethiopia Wheat: Drought and Conflict Reduces Wheat Production Estimate

Ethiopia wheat production for marketing year (MY) 2023/24 is estimated at 5.5 million metric tons (mmt), down 2.0 mmt (27 percent) from last month and down 0.3 mmt (5 percent) from last year. Harvested area is estimated at 1.9 million hectares (mha), down 0.6 mha (24 percent) from last month and unchanged from last year. Yield is estimated at 2.89 metric tons per hectare, down 5 percent from last year and down 1 percent from the 5-year average. Wheat yields are estimated below the 5-year average due to conflict in several wheat growing regions, high fertilizer prices, and mid-season drought during August and September.

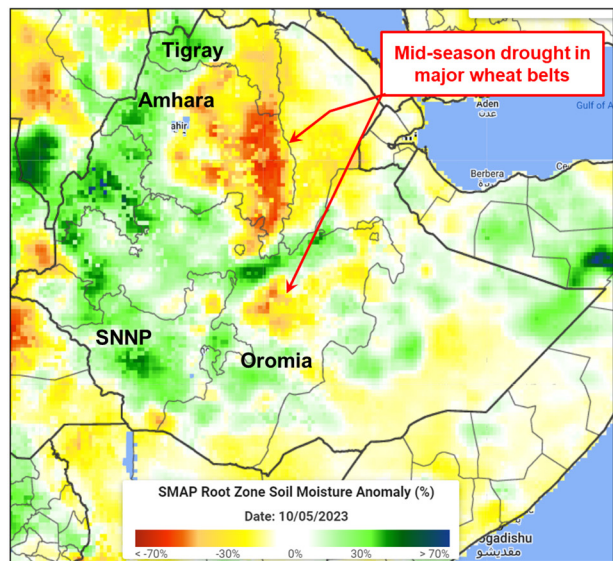
Ethiopia Wheat Production



Data Sources:
1). Percentage values indicate percent regional production of total average from 2011-2015, Ethiopia's Central Statistical Agency (CSA).
2). District (woreda) production from 2006 Atlas of the Ethiopian Rural Economy, CSA and International Food Policy Research Institute (IFPRI)

Root Zone Soil Moisture Anomaly

(October 5, 2023, Average Period from 2015-2022)



Source: NASA SMAP L4 Global 3-hourly 9-km Surface and Root Zone Soil Moisture product from April 2015 available on Google Earth Engine

Wheat is an important food staple crop in Ethiopia, and it comprises about 18 percent of the country's total cereal production. The Government of Ethiopia is implementing an ambitious wheat self-sufficiency plan by increasing wheat yields through mechanization, introducing a cluster farming agriculture extension program, and expanding wheat area with irrigation farming in lowlands. The cluster farming extension system targets smallholder farmers and it aims to increase wheat yields by providing adequate supplies of modern agricultural inputs, such as

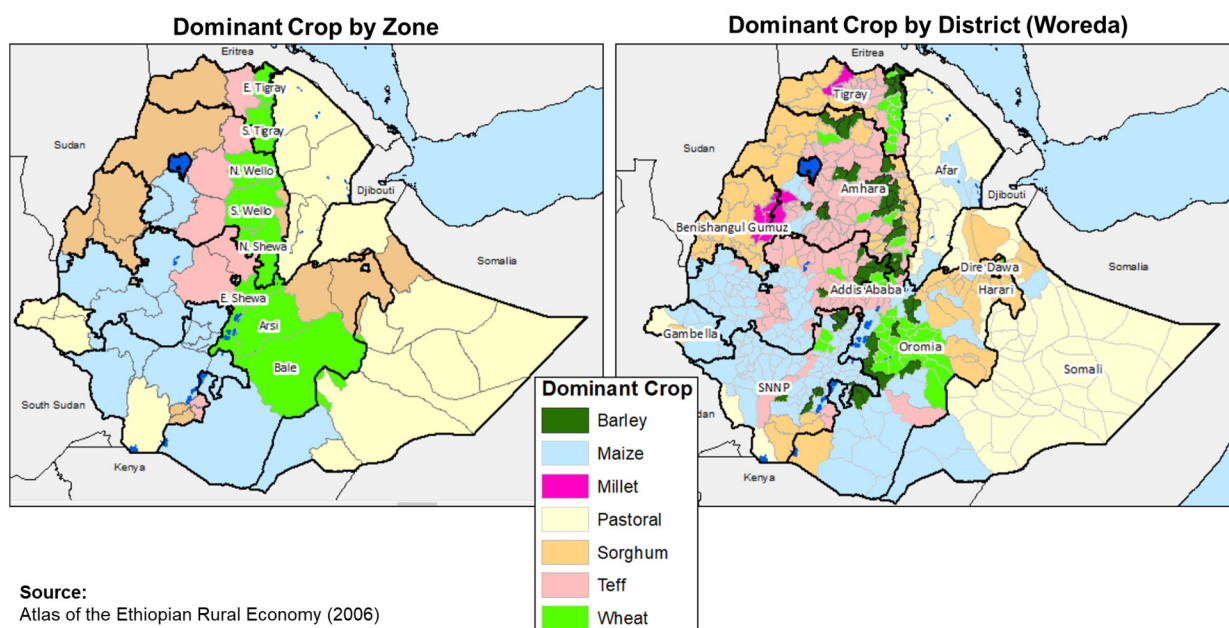
Approved by the World Agricultural Outlook Board

improved seed varieties and fertilizers, as well as taking steps to mechanize agricultural practices throughout the country.

USDA’s estimated MY 2023/24 wheat yield is below average because high fertilizer prices reduced input availability and the three-year conflict decreased farmer mobility and agriculture input supplies during the 2023 growing season. In addition, mid-season drought affected wheat-growing areas.

USDA’s estimated MY 2023/24 wheat area is approximately the same as the previous two years. Satellite imagery analysis by USDA’s Foreign Agricultural Service and several other researchers indicated that irrigated wheat area did not increase by two million hectares as claimed by Ethiopia’s Ministry of Agriculture.

Ethiopia

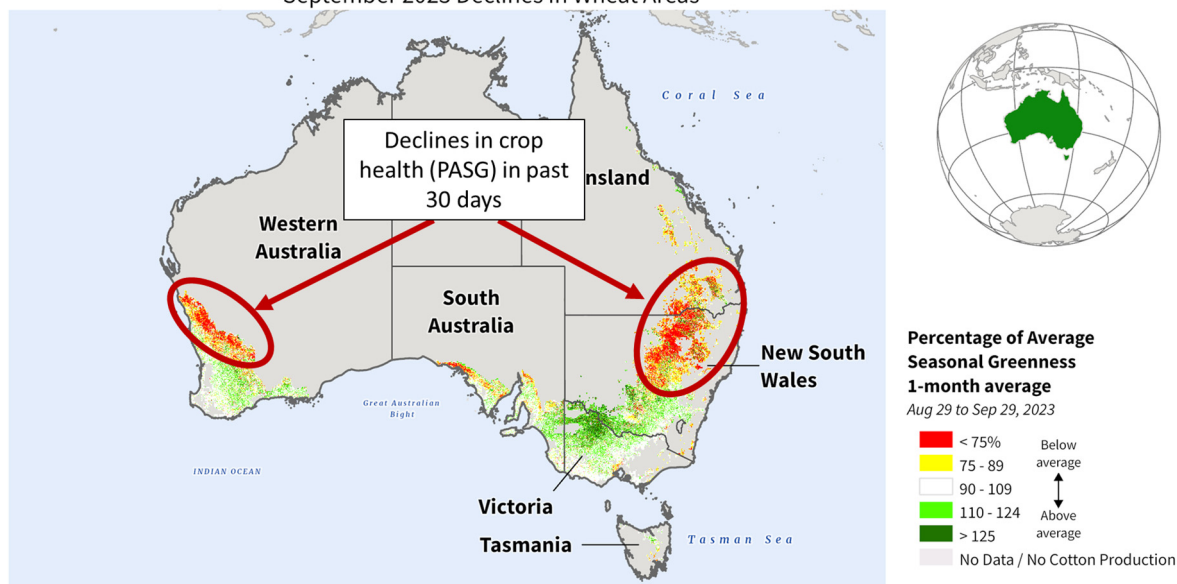


Ethiopia is the largest wheat producer in Sub-Saharan Africa, where wheat is mostly grown under rainfed conditions on small farms in the southern and central highlands. Wheat in Ethiopia is planted during the main *meher* rainy season from June to August and harvested from October through January. The northern Tigray region is currently facing a food security crisis after a conflict between federal and regional forces displaced thousands of people and access to agriculture inputs to smallholder farmers in the north continues to be hampered. The Tigray region is chronically food insecure, and it produced approximately six percent of the country’s wheat output before the conflict. (For more information, please contact Curt.Reynolds@usda.gov.)

Australia Wheat: Production Revised Lower on Dry Conditions

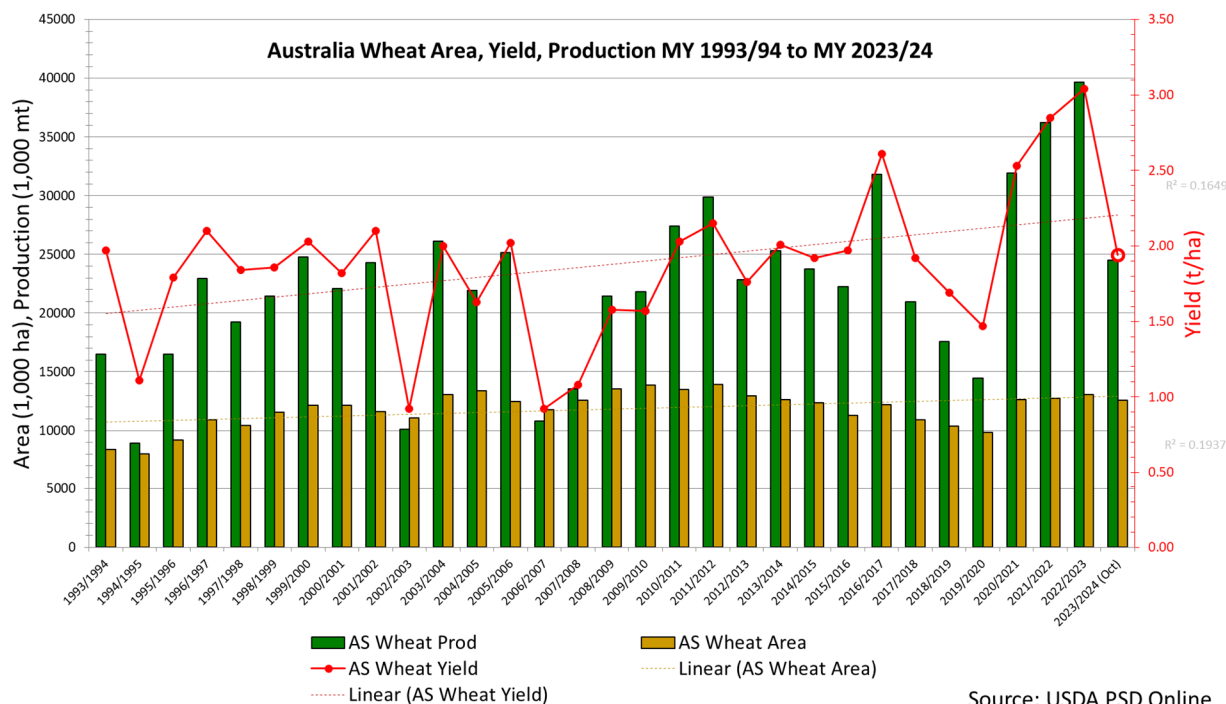
Australia: Percent of Average Seasonal Greenness (PASG)

September 2023 Declines in Wheat Areas



Sources: NASA/USDA MODIS 1-month Percent of Average Seasonal Greenness (PASG), Aug 29 to Sep 29, 2023; IFPRI Wheat Crop Mask

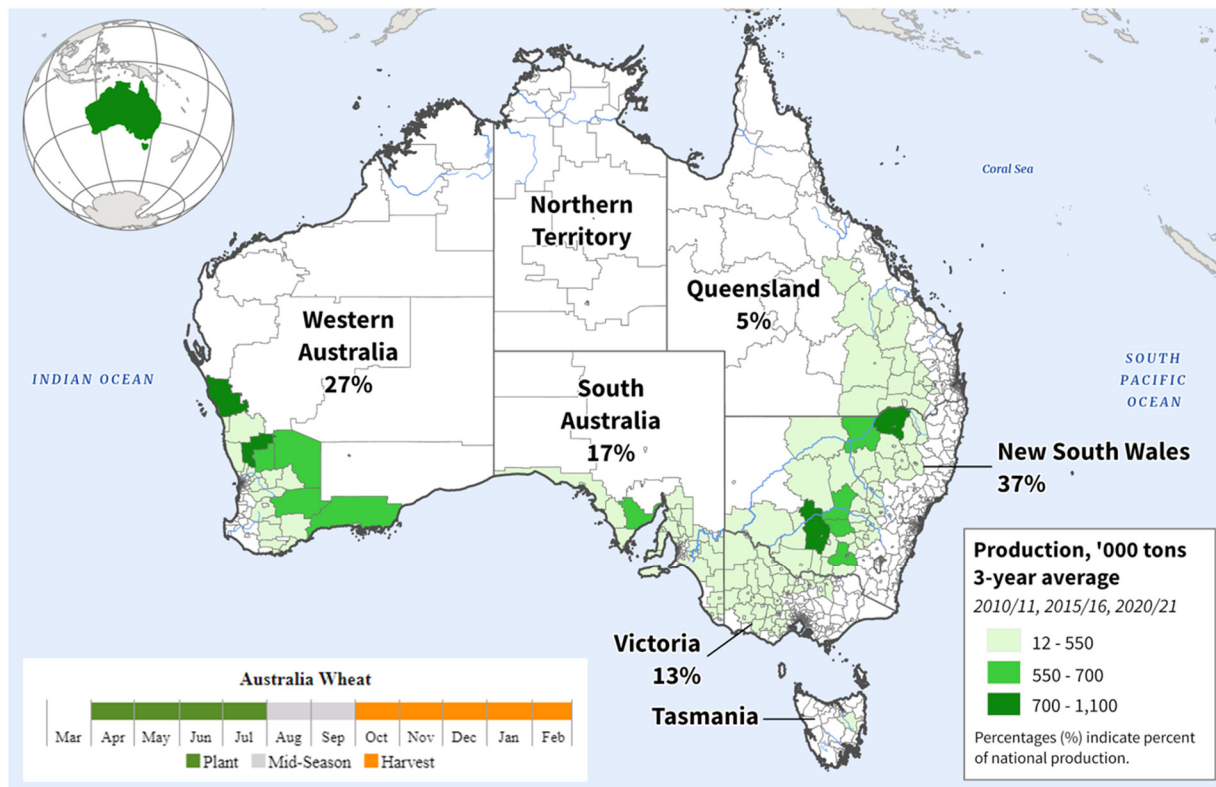
USDA estimates Australia marketing year (MY) 2023/24 wheat production at 24.5 million metric tons (mmt), down 1.5 mmt or 6 percent from last month, and down 15.2 mmt or 38 percent from last year's record. Harvested area is estimated at 12.6 million hectares (mha), unchanged from last month but down 0.45 mha or 3 percent from last year. Yield is estimated at 1.94 tons per hectare (t/ha), down 6 percent from last month, and down 36 percent from last year's record.



Source: USDA PSD Online

Australia’s wheat prospects have slowly but steadily declined throughout the season after favorable rainfall in April. This was followed by very dry conditions in May. Favorable rains returned in June for most growing regions. July through September turned unusually dry. Winter crops, including wheat, enter flowering or reproduction in September in the major producing states. The declining soil moisture began to stress the crop during this critical period.

Australia: Wheat Production



USDA Foreign Agricultural Service
U.S. DEPARTMENT OF AGRICULTURE

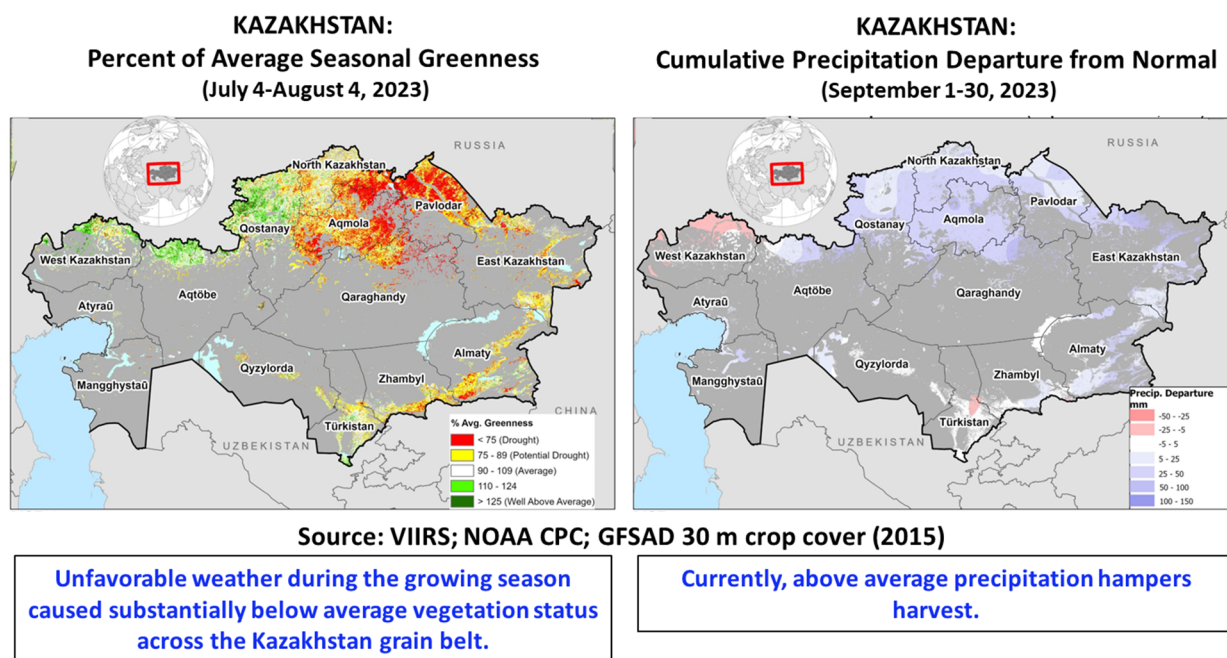
Source: Australian Bureau of Statistics, Agricultural Censuses of 2010/11, 2015/16, and 2020/21 (2021 SA2 Boundaries)

Satellite-derived Percent of Average Seasonal Greenness (PASG) values are less than normal in important growing areas of Western Australia and New South Wales, which is indicative of crop stress as a result of the exceptionally dry September. Rainfall is needed soon to sustain yield potential. In the east, harvesting typically starts in central Queensland during August and progresses down the east coast and around to Victoria and South Australia, finishing during January. On the west coast, the wheat harvest runs from October through January. *(For more information, please contact James.Crutchfield@usda.gov.)*

Kazakhstan Wheat: Production Decreased Due to Unfavorable Weather

Kazakhstan wheat production for marketing year (MY) 2023/24 is estimated at 13.0 million metric tons (mmt), down 13 percent from last month and 21 percent from last year. Yield is estimated at 0.96 tons per hectare, down 13 percent from last month and 25 percent from last year. Harvested area is estimated at 13.6 million hectares (mha), unchanged from last month and up 6 percent from last year.

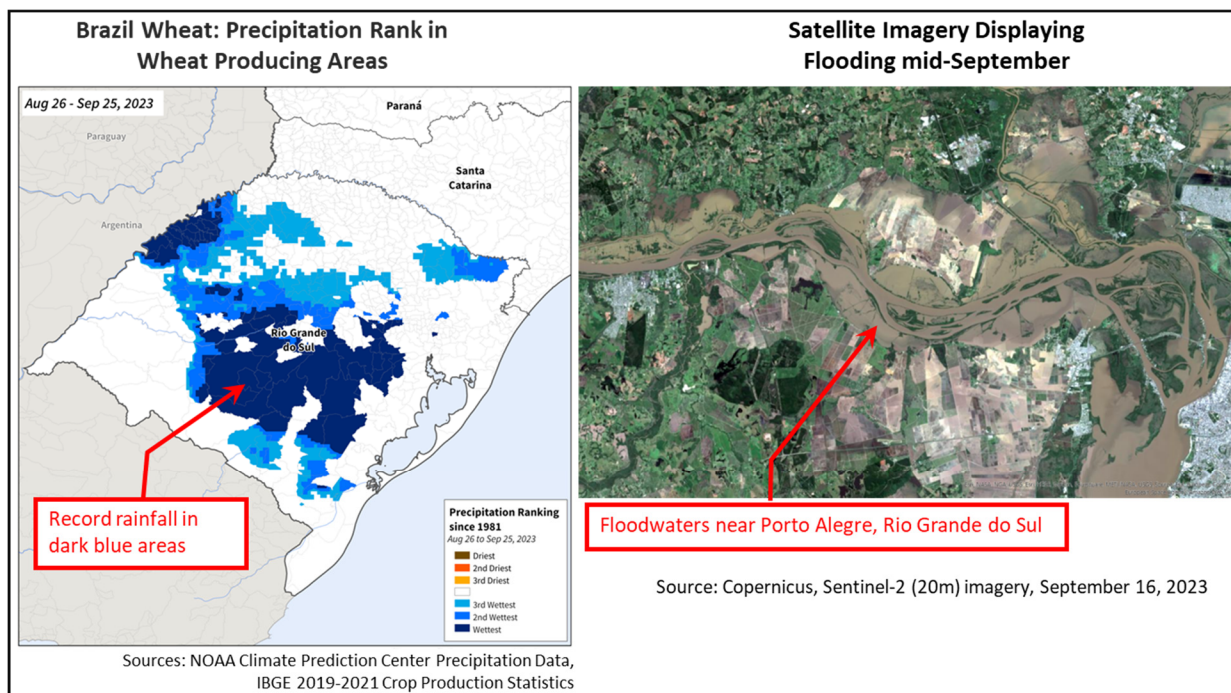
According to the Ministry of Agriculture of the Republic of Kazakhstan, total grain harvest is about 73 percent complete as of early October. The harvest campaign is currently occurring under above-average precipitation conditions. The abnormally wet September weather further threatens this season's wheat output. A drop in grain quality and the need for additional resources for grain drying are some of the main challenges farmers face as the harvest campaign continues. A large portion of the Kazakhstan Grain Belt already faced challenging and suboptimal growth conditions this season. Lack of adequate precipitation and unfavorable temperatures hampered crop development during the key yield formation stages.



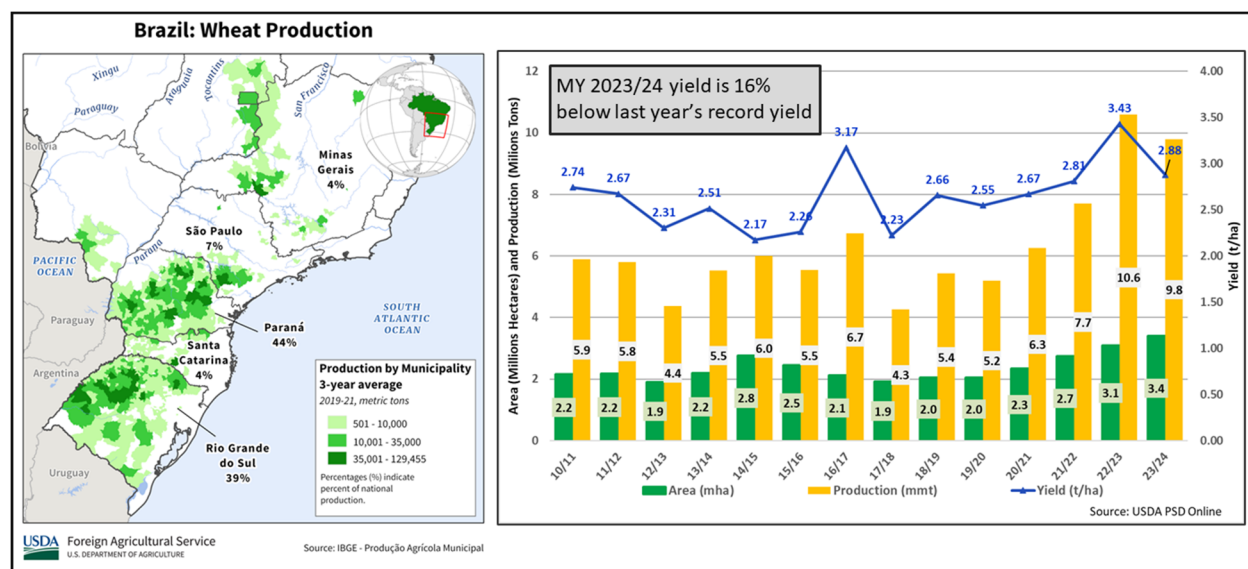
About 80 percent of the crop is produced in the north-central oblasts of Aqmola, Qostanay, and North Kazakhstan. The crop is planted in mid-to-late May and harvested between August and September. (For more information, please contact Iliana.Mladenova@usda.gov.)

Brazil Wheat: Record Rainfall Reduces Wheat Production

Brazil wheat production for marketing year (MY) 2023/24 is estimated at 9.8 million metric tons (mmt), down 0.5 mmt or 5 percent from last month and down 8 percent from last year's record crop. Harvested area is estimated at 3.4 million hectares (mha), unchanged from last month and up 10 percent from last year. Yield is estimated at 2.88 metric tons per hectare (t/ha), down 5 percent from last month and down 16 percent from last year's record.



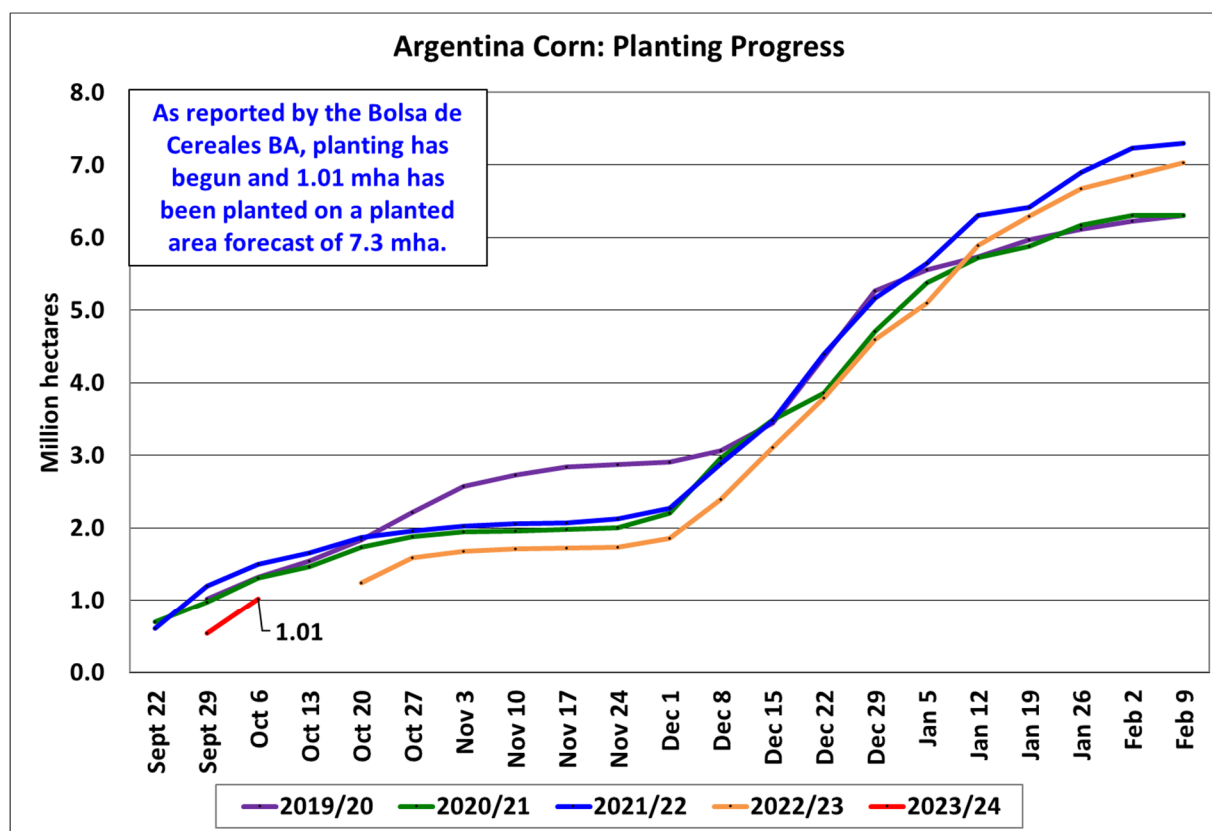
Harvest is nearly 70 percent complete in Paraná, the country’s second-largest wheat-producing state, and harvest just began this month in the largest wheat producing state, Rio Grande do Sul. This season began with favorable weather conditions until the end of August when there was a freeze event and storms with high wind and large rainfall volumes in the state of Rio Grande do Sul. Furthermore, this record rainfall continued through late September in Rio Grande do Sul. Waterlogged soils prevented fertilizer applications which limited root development and tillering. Some regions in the state had upwards of 700 millimeters (mm) of rainfall. The excessive moisture coupled with high temperatures promoted fungal pathogens in both states, reducing yields and grain quality.



The state estimating agency for Paraná, DERAL, recently lowered state wheat yield estimates to 2.95 t/ha due to fungal disease pressure from high heat and humidity. In Rio Grande do Sul, the Technical Assistance and Rural Extension of Rio Grande do Sul (EMATER-RS) estimates a 14 percent reduction in yield from initial estimates. The state yield in Rio Grande do Sul could be even lower considering that the copious rainfall volume occurred during sensitive reproductive stages. (For more information, please contact Sunita.Yadav-Pauletti@usda.gov.)

Argentina Corn: Production Up 62 Percent from Last Year

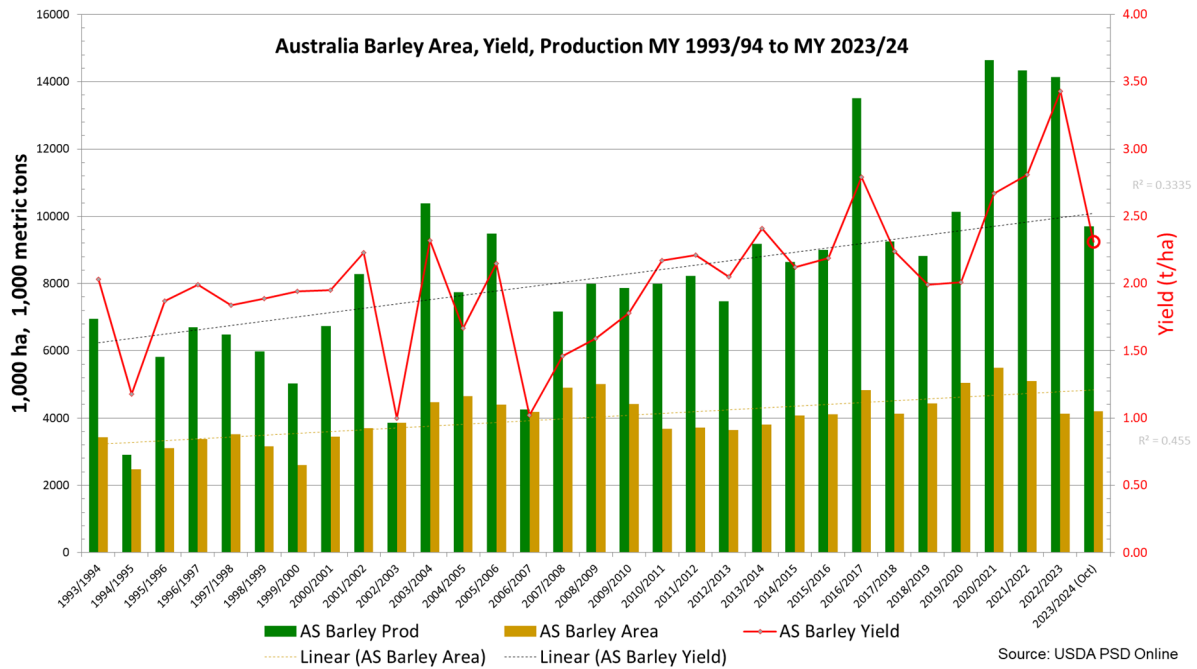
Argentina corn production for marketing year 2023/24 is forecast at 55.0 million metric tons, up 2 percent from last month, and up 62 percent from last year. Corn yield is forecast at 7.75 tons per hectare, up slightly from last month, and up 53 percent from last year. Harvested area is forecast at 7.1 million hectares, up 1 percent from last month, and 6 percent from last year.



Source: Argentina Bolsa de Cereales Buenos Aires

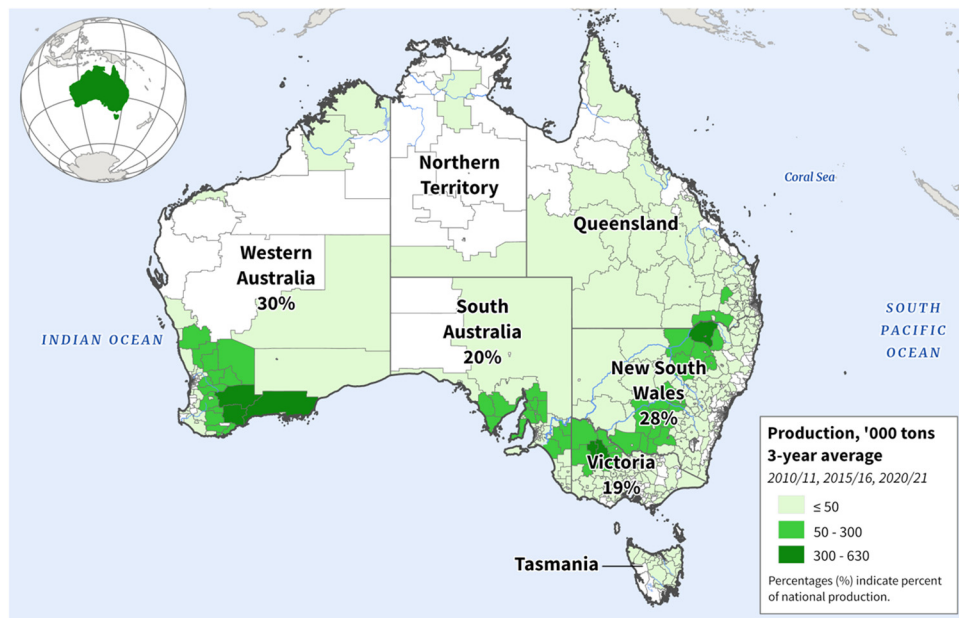
Harvested area is up month-to-month because of a new planted area forecast from the Bolsa de Cereales Buenos Aires. USDA assumes normal abandonment, which is around 3 percent for corn in Argentina. Early-planted corn began at the end of September and will continue until early December, when late-planted corn will begin. (For more information, please contact Katie.McGaughey@usda.gov.)

Australia Barley: Production Revised Lower



USDA estimates Australia marketing year (MY) 2023/24 barley production at 9.7 million metric tons (mmt), down 0.3 mmt or 3 percent from last month, and down 4.4 mmt or 31 percent from last year. Harvested area is estimated at 4.2 million hectares (mha), unchanged from last month, but up 2 percent from last year. Yield is estimated at 2.31 tons per hectare (t/ha), down 3 percent from last month, and down 33 percent from last year's record.

Australia: Barley Production



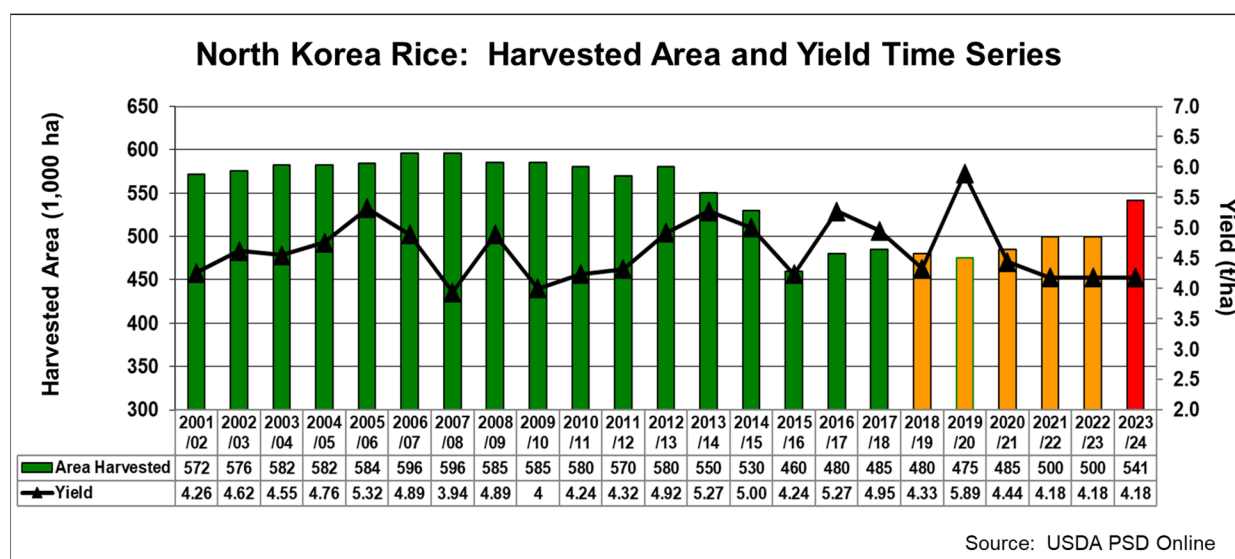
USDA Foreign Agricultural Service
U.S. DEPARTMENT OF AGRICULTURE

Source: Australian Bureau of Statistics, Agricultural Censuses of 2010/11, 2015/16, and 2020/21 (2021 SA2 Boundaries)

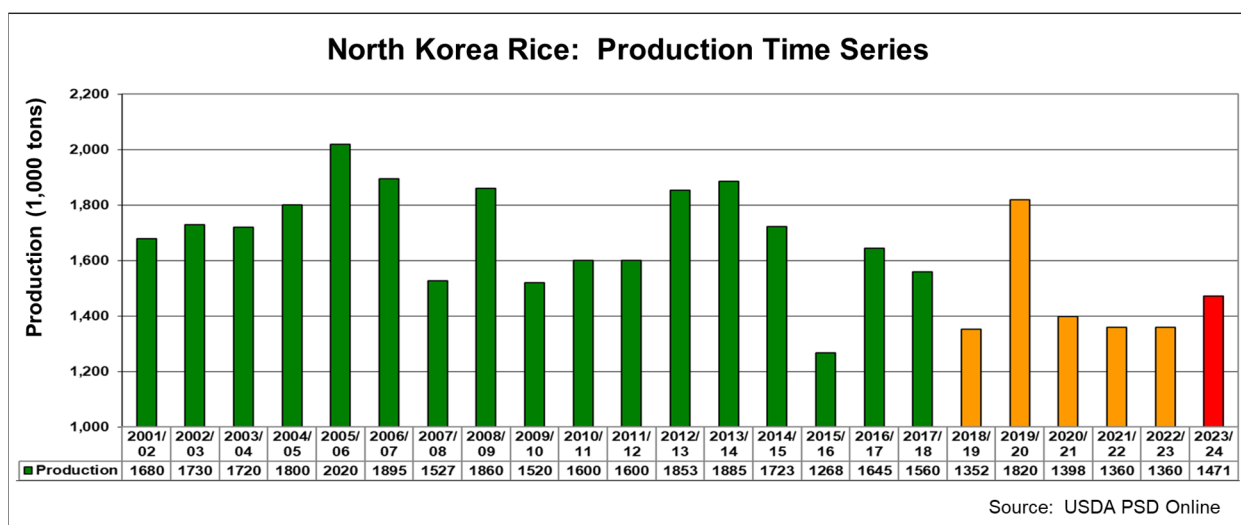
The barley producing states of Western Australia and South Australia had a favorable start to the crop season with early rains and above average levels of soil moisture across most cropping regions, which encouraged producers to plant early. As a result, the early sown barley crops are at a more advanced stage than other winter grains. This advanced stage reduces the likelihood of heat stress in spring and minimizes potential yield loss even though precipitation was below normal from July through September in some growing areas. Barley sowing commenced in April and continued into June. Harvest begins in November and continues through December. *(For more information, please contact James.Crutchfield@usda.gov.)*

North Korea Rice: Production Increased Due to Higher-Than Expected Harvested Area

USDA estimates North Korea’s marketing year 2023/24 milled rice production at 1.47 million metric tons (mmt), up 8 percent or approximately 110,000 metric tons (mt) from last month and last year, and up 1 percent from the 5-year average of 1.46 mmt. Area is estimated at 541,000 hectares (ha), 8 percent above last month and last year, and up approximately 11 percent from the 5-year average of 488,000 ha. Yield (rough) is estimated approximately at 4.18 metric tons per hectare (mt/ha), same as last month and last year, but down 9 percent from the 5-year average of 4.61 mt/ha.



Rice progressed well throughout the season in North Korea. The rainy season typically starts in April and about 80 percent of the annual precipitation, on average, occurs between July and September. This year’s growing season began with beneficial soil moisture conditions, and the rainfall continued to be above average, providing favorable conditions for planting, crop establishment, and reproduction during May to early August. The conditions encouraged rice plantings and maintained yield expectations at the same level as last season.

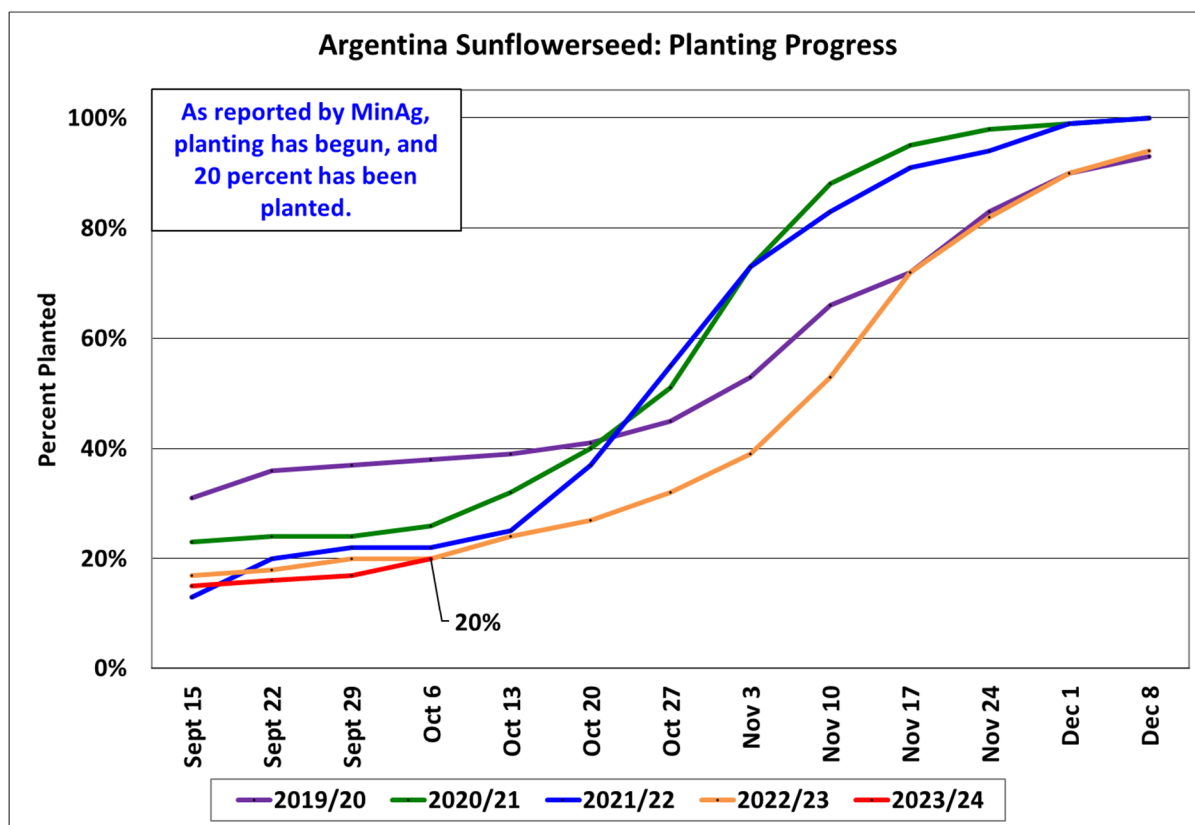


The year-to-year increase in harvested area was determined based on USDA’s satellite imagery analysis and statistical area estimation at the national and subnational scale. USDA relied on 10-day, 10-meter analysis-ready imagery, which is a fusion of Copernicus Sentinel-2A, Sentinel-2B, NASA/USGS Landsat 8, and Landsat 9 imagery. With favorable, above-average crop conditions for rice, production is expected to increase due to an expansion in planted area. In recent years, according to North Korea’s Ministry of Agriculture, new land has been brought into production through such projects as river improvements, straightening of waterways, land reclamation, and relocation of public buildings.

North Korea’s main season (April to October) crops are rice and corn, accounting for almost 90 percent of the total crop output. Additionally, there are small quantities of soybeans, potatoes, millet, and sorghum. Rice is predominantly produced in the western provinces of South Hwanghae (28 percent, Hwanghae-namdo), North Pyongan (22 percent, P’yongan-bukto), South Pyongan (20 percent, P’yongan-namdo), and South Hamgyong (11 percent, Hamgyong-namdo). The southern, southwestern, and western provinces are considered the “cereal bowl regions.” *(For more information, contact Dath.Mita@usda.gov.)*

Argentina Sunflowerseed: Production Up Due to Higher Planted Area Forecast

Argentina sunflowerseed production for marketing year 2023/24 is forecast at 4.7 million metric tons, up 21 percent from last month, but down 6 percent from last year. Sunflowerseed yield is forecast at 2.04 tons per hectare, down slightly from last month and last year's yield. Harvested area is forecast at 2.3 million hectares (mha), up 21 percent from last month, but down 6 percent from last year.



USDA Foreign Agricultural Service
U.S. DEPARTMENT OF AGRICULTURE

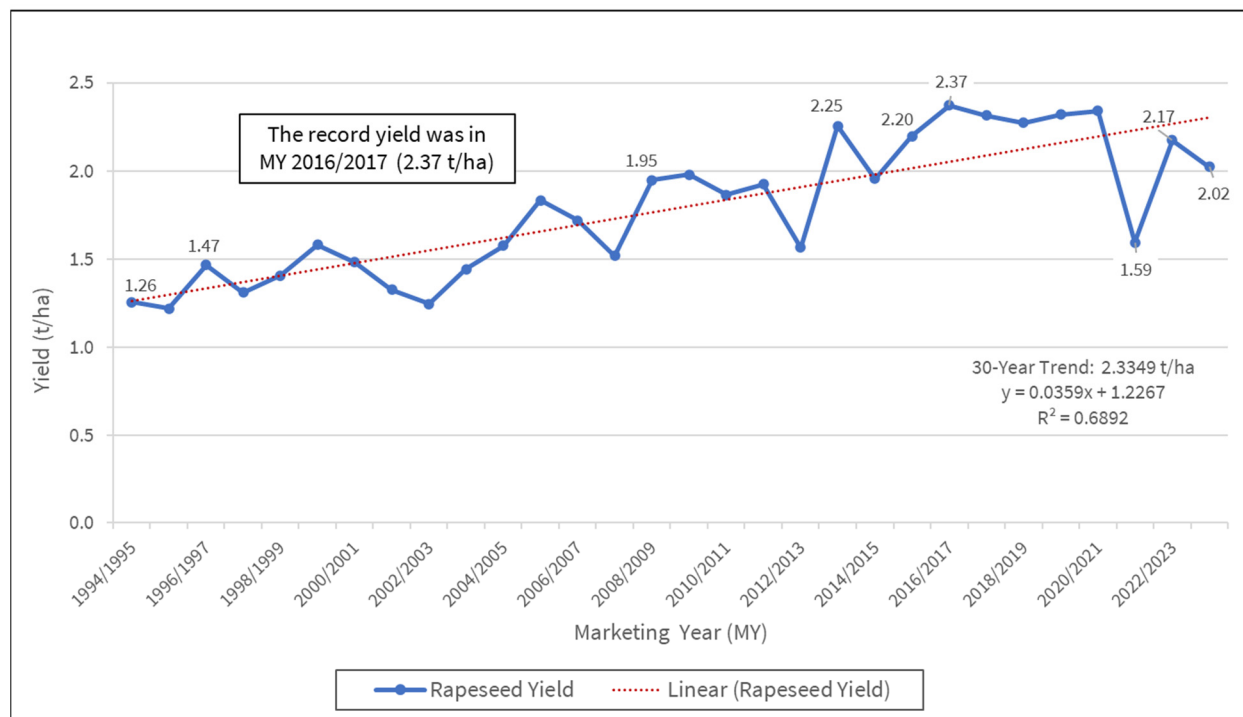
Source: Argentina Ministry of Agriculture

According to the Argentina Ministry of Agriculture (MinAg), planting began in mid-September and by early October is about 20 percent complete. Planting will continue until early December. The MinAg provided an updated planted area forecast of 2.4 mha. USDA publishes harvested area that accounts for sunflowerseed abandonment, which is about 2 percent on average. (For more information, please contact Katie.McGaughey@usda.gov.)

Canada Rapeseed: Recent Modeling from Statistics Canada Indicates Lower Yields

USDA estimates Canada rapeseed production for marketing year (MY) 2023/24 at 17.8 million metric tons (mmt), down 2 percent from last month, 5 percent from last year and 4 percent below the 5-year average. Harvested area is estimated at 8.8 million hectares, unchanged from last month, but up 2 percent from last year and 1 percent above the 5-year average. Yield is estimated at 2.02 metric tons per hectare (t/ha), down 2 percent from last month, 7 percent from last year, and 6 percent below the 5-year average.

Canada Rapeseed Yield by Marketing Year

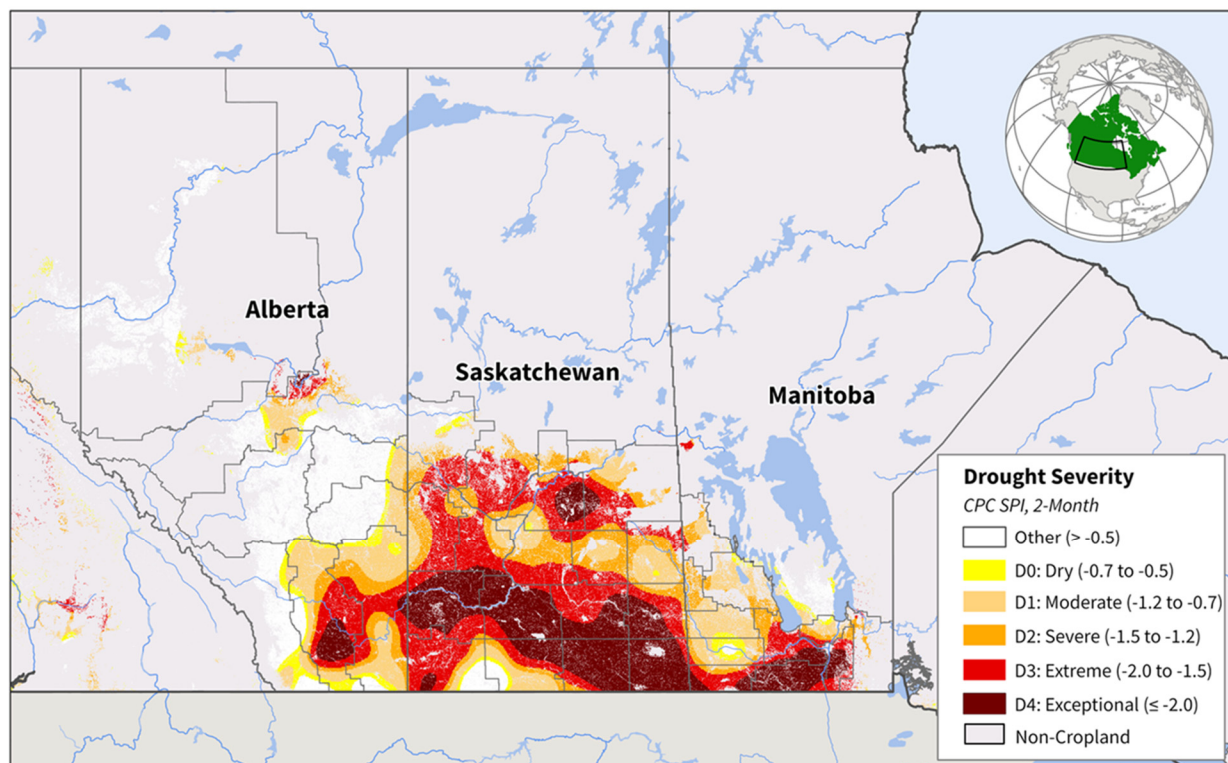


Source: USDA PSD Online

This will be the third season in a row where dryness or drought has reduced rapeseed yields in Canada, as the last three marketing years (MY 2021/22, 2022/23 and 2023/24) hold the lowest yields among the previous nine seasons. The yield for all three seasons was below trend.

Canadian Prairies: Standardized Precipitation Index (SPI)

June 6 to August 5, 2023, 2-Month Average



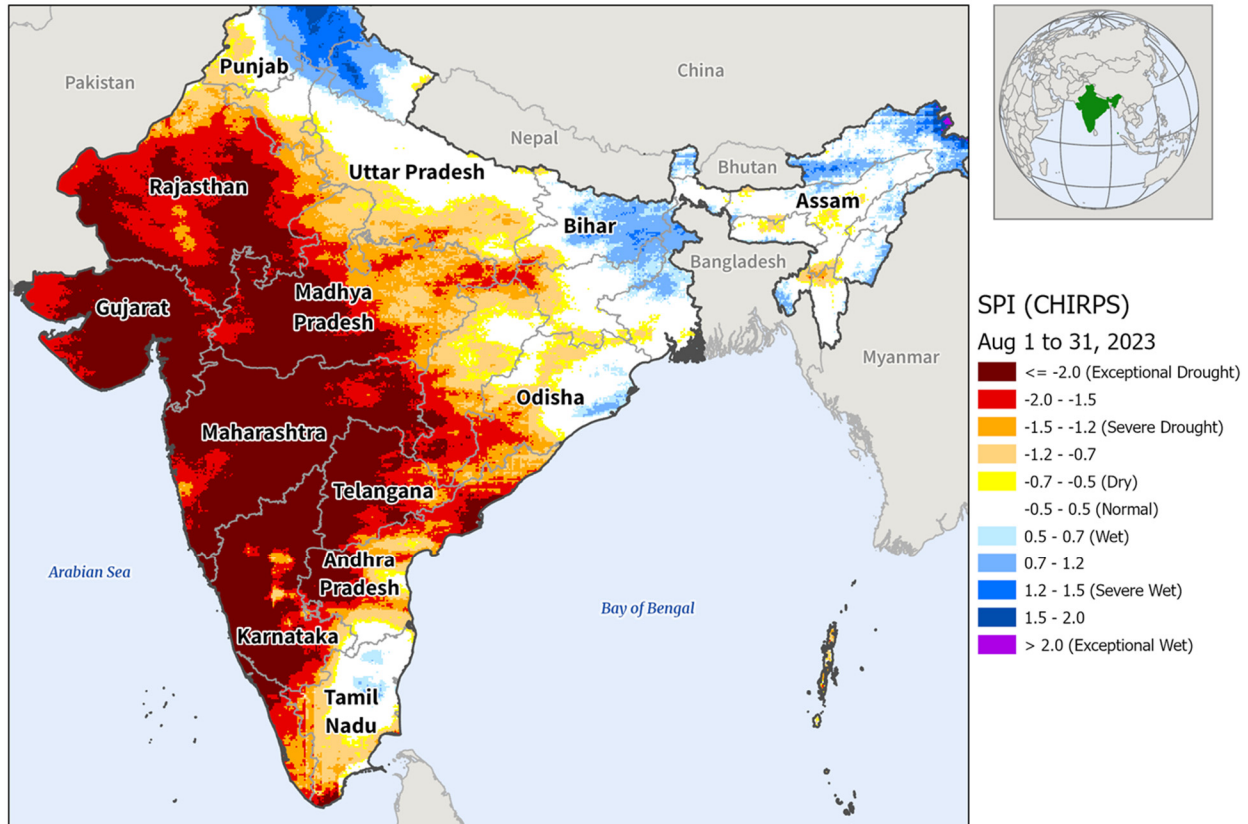
Sources: NOAA CPC 2-Month Standardized Precipitation Index (SPI); Agriculture and Agri-Food Canada (AAFC), Annual Crop Inventory 2022 Crop Mask

Statistics Canada recently published its model-based estimates for July and August, which indicated a substantial year-to-year reduction in yield and production. Limited rainfall in the southern and central Prairies during the summer months stressed crops and lowered yields, particularly in Saskatchewan, where over half of Canada's rapeseed crop is grown. (For more information, please contact Aaron.Mulhollen@usda.gov.)

India Soybeans: Yields Impacted by Near-Record Dryness in August

USDA estimates India marketing year (MY) 2023/24 soybean production at 11.0 million metric tons, down 8 percent from last month and 11 percent from last year. Area is estimated at 13.0 million hectares, unchanged from last month and last year. Yield is estimated at 0.85 metric tons per hectare, down 8 percent from last month and 11 percent last year.

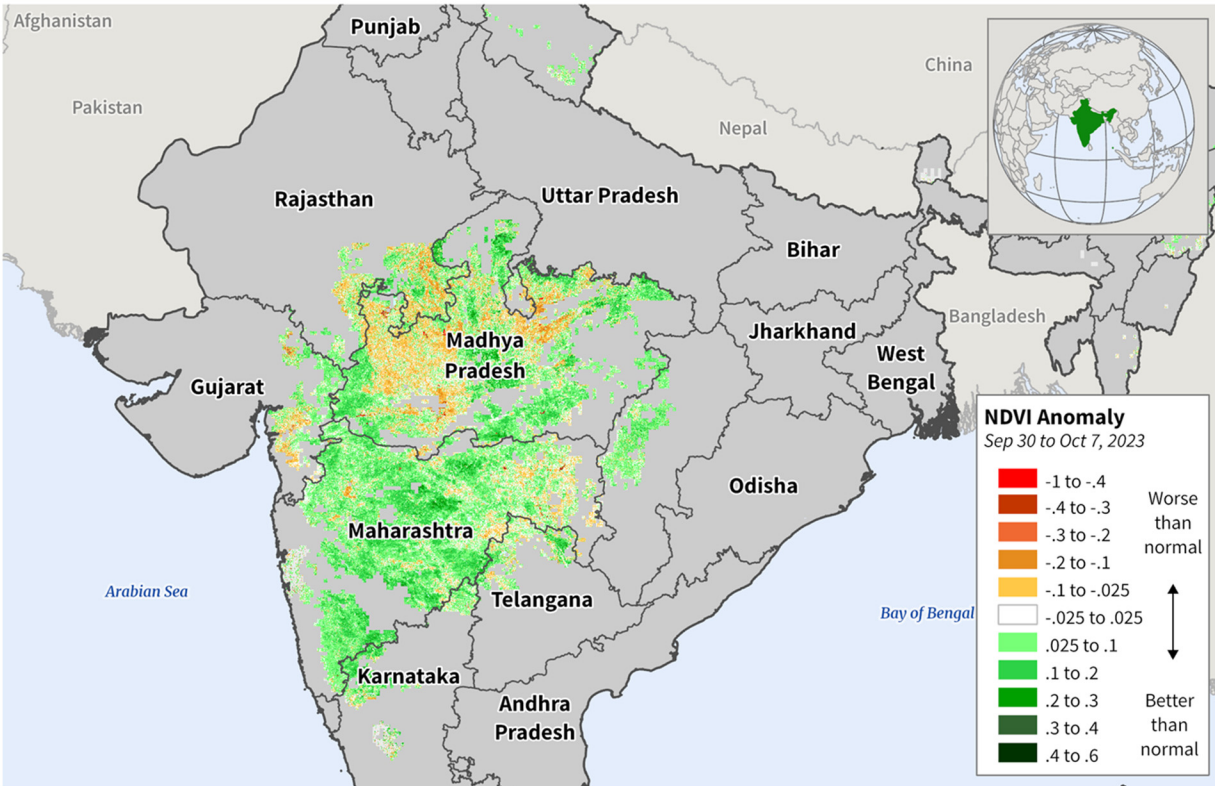
India: Exceptional Dryness in August 2023



Sources: UC Santa Barbara, CHIRPS Standardized Precipitation Index (SPI)

India has been impacted by the uneven nature of rainfall geographically and seasonally. Farmers planted soybeans in the optimal planting window, finishing in July. August was the driest month in 48 years, with limited rainfall as the crop progressed towards flowering and pod development. Trade sources also reported the incidence of white flies and disease on soybeans. Near-record rains in September along with historically dry conditions in August negatively impacted yields. In Madhya Pradesh, the satellite-derived Normalized Difference Vegetation Index (NDVI) showed slightly below-average crop vigor in late September.

Mixed Crop Vigor Across the Soybean Areas of Madhya Pradesh

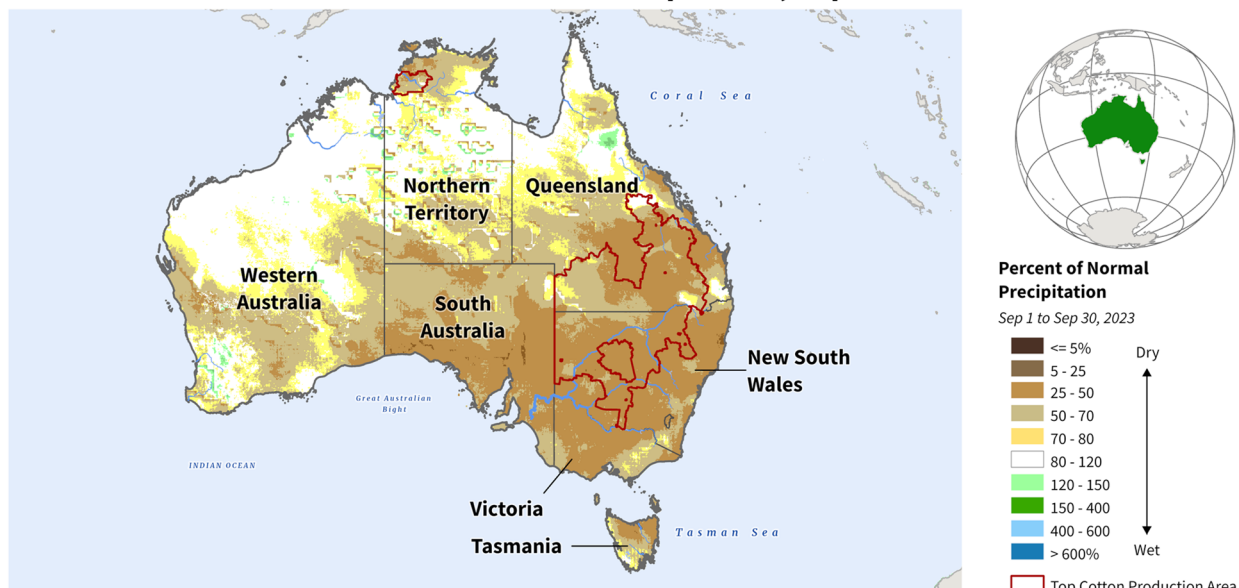


Sources: NASA/USDA, MODIS 8-day NDVI Anomaly; IFPRI Soybean Crop Mask

Soybeans are produced only in the *kharif* season. Madhya Pradesh, Maharashtra, and Rajasthan produce roughly 94 percent of the total soybean production. Soybeans are harvested from late October through November. (For more information, please contact Arnella.Trent@usda.gov.)

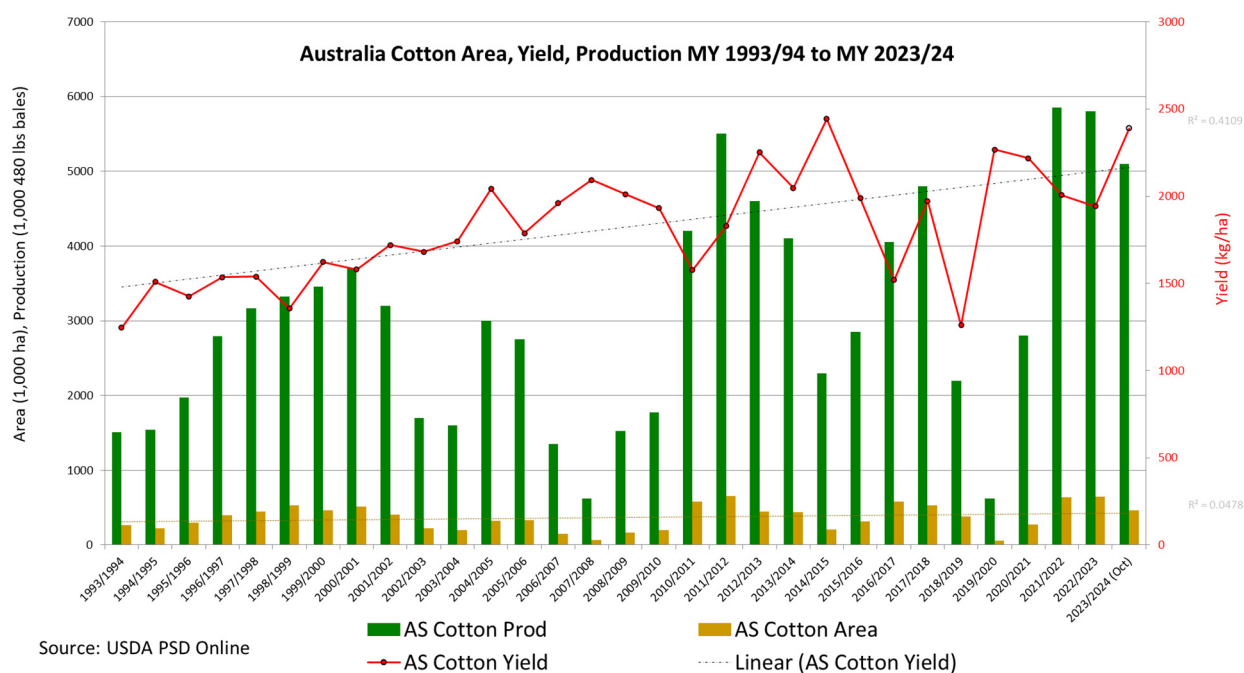
Australia Cotton: Production Revised Down on Lower Area

Australia: Percent of Normal Precipitation, September 2023



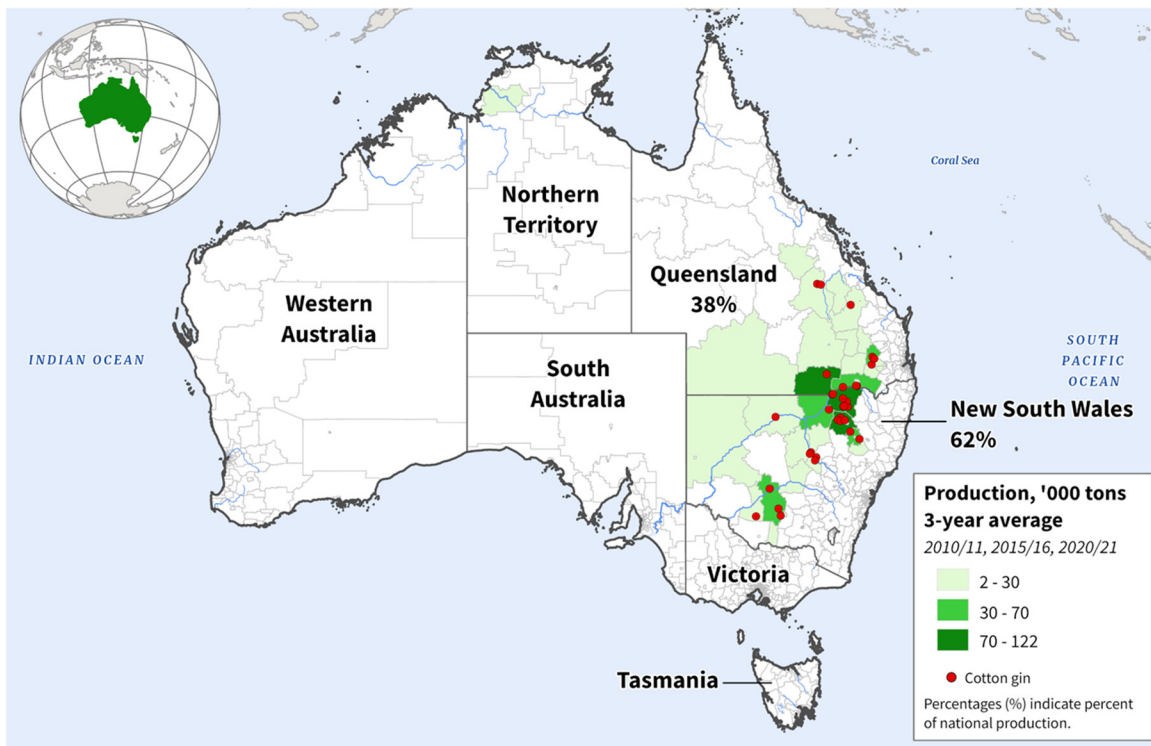
Source: USCB Climate Hazards Group InfraRed Precipitation with Station data (CHIRPS) Cumulative Precipitation Percent of Normal (September 1 to 30, 2023)

Australia's marketing year (MY) 2023/24 cotton production is forecast at 5.1 million 480-pound bales, down 0.3 million bales or 6 percent from last month and 12 percent from last year. Harvested area is forecast at 465,000 hectares (ha), down 50,000 ha or 10 percent from last month and down 185,000 ha or 28 percent from last year. Industry sources indicate lower planting intentions this season. Dryland cotton area is estimated lower due to extended dryness at sowing in major cotton producing areas of eastern Australia.



Yield is forecast at 2,388 kilograms per hectare, up 5 percent from last month and 23 percent from last year. Yield is expected to increase year-to-year because of an estimated increase in the share of the total area sown to irrigated cotton this season as compared to last. Dryland cotton yields are substantially lower than irrigated yields. Irrigated cotton area comprises about 90 percent of Australia’s total cotton production. Dryland cotton planting tends to vary with the seasonal weather forecast and prices at sowing. Irrigated cotton area is estimated to remain relatively high, reflecting increased water storage levels in reservoirs supplying cotton growing regions.

Australia: Cotton Production

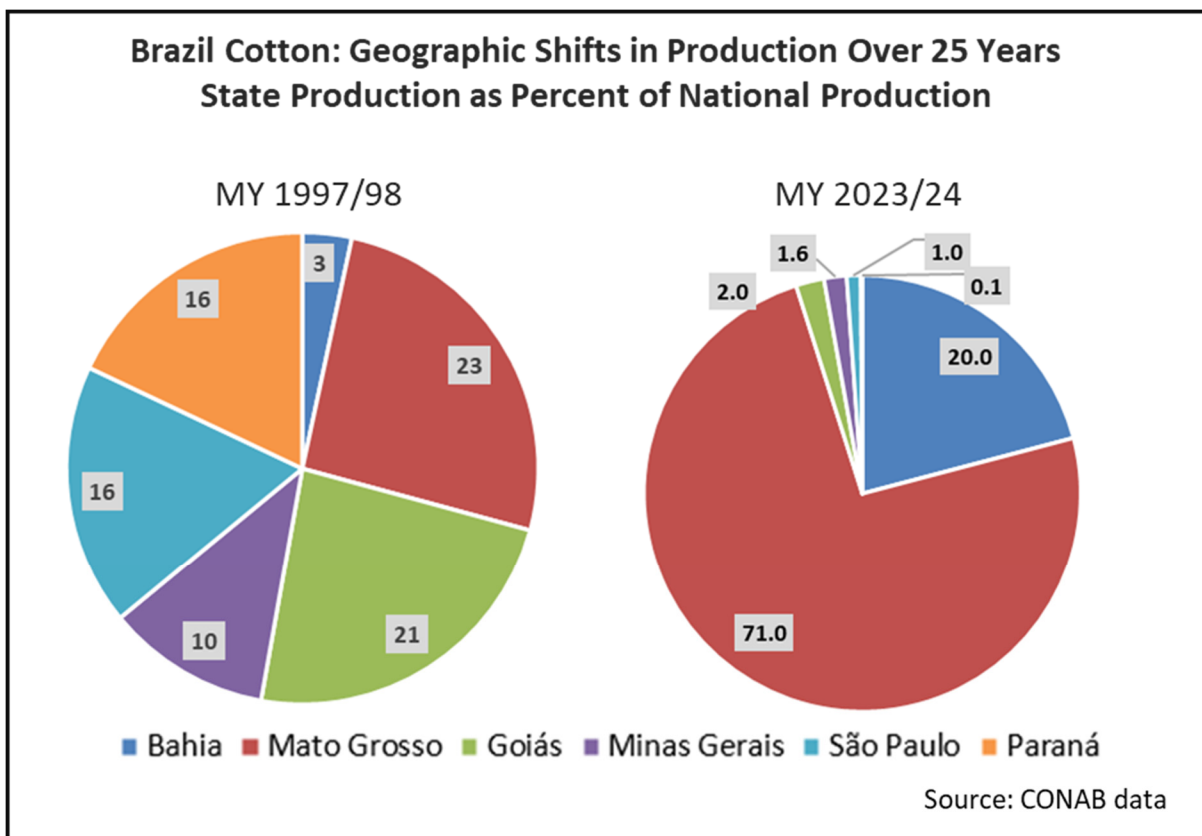


Sources: Australian Bureau of Statistics, Agricultural Censuses of 2010/11, 2015/16, and 2020/21 (2021 SA2 Boundaries); Namoi Cotton; LDC Cotton; Queensland Cotton; Koramba Ginning; North West Cotton; Australian Food and Fibre; Carrington Cotton; Brighann Cotton; Southern Cotton; Carroll Cotton

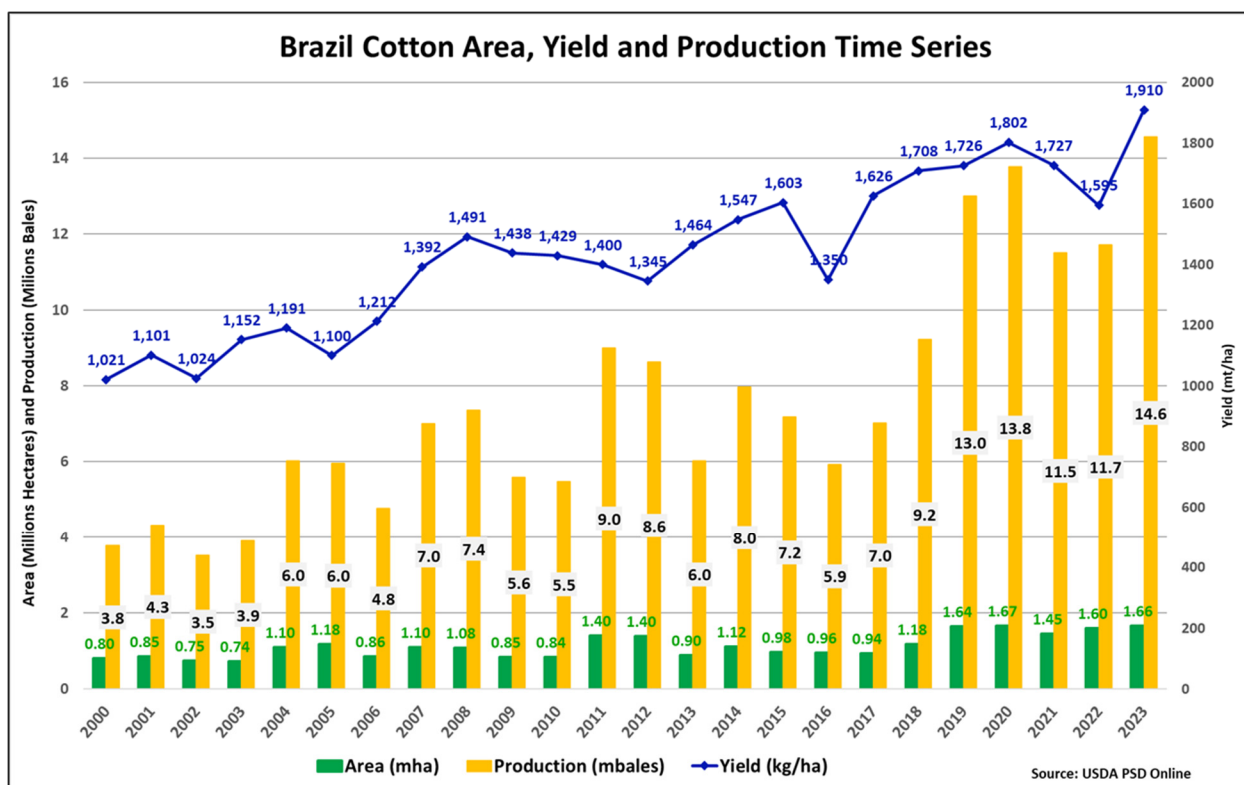
Cotton and sorghum are the two dominant summer crops in eastern Australia. Cotton planting typically begins in September with October being the primary planting month. Harvest begins in March and peaks in April. The two major cotton producing states are New South Wales (62 percent) and Queensland (38 percent) based on the current 3-year average. *(For more information, please contact James.Crutchfield@usda.gov.)*

Brazil Cotton: MY 2023/24 Production Increased on Late Harvest Results & Series Revision

This month, a series revision was made to Brazil cotton. USDA's previous marketing year (MY) 2000/01 to MY 2022/23 area and production estimates shift to one year later and become the current MY 2001/02 to MY 2023/24 estimates. The previous MY 2000/01 estimates for area and production are replaced by the average of the MY 1999/00 and new MY 2001/02 estimates with the new yield derived from the area and production revision.



Over the last 25 years, a large proportion of cotton production in Brazil has shifted geographically. In the revised MY 2023/24, roughly 70 percent of cotton production was cultivated in the state of Mato Grosso where it is largely grown as a second crop following soybean harvest. The geographic shift in cotton production from the Southeast to the Center-West has resulted in a shift in the timing of the cotton harvest. The series revision reflects the geographic shift in production and the related timing of harvest. Please refer to the Foreign Agricultural Service's [Cotton: World Markets and Trade](#) publication for further details.



Brazil’s MY 2023/24 cotton production is raised to 14.6 million 480-pound bales. The MY 2023/24 production is larger due to two reasons: the series revision explained in the previous paragraphs, and the excellent reported yields as the harvest concluded. Compared to the equivalent monthly estimate for the same season (previously MY 2022/23 in the September estimate), the monthly production is larger by 0.2 million bales (1 percent) from last month’s estimate (14.4 million 480-pound bales), and up by 2.8 million bales (24 percent) from the previous season. Harvested cotton area is unchanged at 1.7 million hectares (mha) when comparing equivalent seasons, and up 4 percent from the previous season. Cotton yield is estimated at a record 1,910 kilograms per hectare (kg/ha), roughly 1 percent higher than last month’s equivalent yield (1,889 kg/ha), and 20 percent above the previous season’s yield. This yield is 6 percent above the prior record of 1,802 kg/ha reached in MY 2020/21. *(For more information, please contact Sunita.Yadav-Pauletti@usda.gov.)*



**World Agricultural Production
U.S. Department of Agriculture**

Foreign Agricultural Service / Global Market Analysis
International Production Assessment Division (IPAD)
Ag Box 1051, Room 4630, South Building
Washington, DC 20250-1051

<https://ipad.fas.usda.gov/>

Telephone: (202) 720-1662 Fax: (202) 720-1158

This report uses information from the Foreign Agricultural Service's (FAS) global network of agricultural attachés and counselors, official statistics of foreign governments and other foreign source materials, and the analysis of economic data and satellite imagery. Estimates of foreign area, yield, and production are from the International Production Assessment Division, FAS, and are reviewed by USDA's Inter-Agency Commodity Estimates Committee. Estimates of U.S. area, yield, and production are from USDA's National Agricultural Statistics Service. Numbers within the report may not add to totals because of rounding. This report reflects official USDA estimates released in the World Agricultural Supply and Demand Estimates (WASDE-584), October 12, 2023.

The FAS International Production Assessment Division prepared this report. The next issue of World Agricultural Production will be released after 12:00 p.m. Eastern Time, November 9, 2023.

Conversion Table

Metric tons to bushels

Wheat, soybeans	=	MT * 36.7437
Corn, sorghum, rye	=	MT * 39.36825
Barley	=	MT * 45.929625
Oats	=	MT * 68.894438

Metric tons to 480-lb bales

Cotton	=	MT * 4.592917
--------	---	---------------

Metric tons to hundredweight

Rice	=	MT * 22.04622
------	---	---------------

Area & weight

1 hectare	=	2.471044 acres
1 kilogram	=	2.204622 pounds



For further information, contact:
U.S. Department of Agriculture
Foreign Agricultural Service
Global Market Analysis

International Production Assessment Division
 Ag Box 1051, Room 4630, South Building
 Washington, DC 20250-1051

Telephone: (202) 720-1662

Fax: (202) 720-1158

GENERAL INFORMATION

Senior Director	Ronald Frantz	202-720-4056	ronald.frantz@usda.gov
Director	Robert Tetrault	202-720-1071	robert.tetrault@usda.gov
Administrative Assistant	Vacant		
USDA Remote Sensing Advisor	Vacant		
Sr. Analyst/Technical Lead	Curt Reynolds, Ph.D.	202-690-0134	curt.reynolds@usda.gov
Sr. Analyst/ Satellite Imagery	Dath Mita, Ph.D.	202-720-7339	dath.mita@usda.gov
Archives Manager/Technical Lead			
Sr. Analyst/Technical Lead	Jim Crutchfield	202-690-0135	james.crutchfield@usda.gov
GIS Mapping/Imagery Analyst	Lisa Colson	202-720-6652	lisa.colson@usda.gov
WAP Coordinators	Ifeoma Collins	202-720-0240	ifeoma.collins@usda.gov
	Shannon Moyo		shannon.moyo@usda.gov
	Aaron Mulhollen	202-690-0131	aaron.mulhollen@usda.gov

COUNTRY- AND REGION-SPECIFIC INFORMATION

South America, Argentina, Venezuela, and Colombia	Katie McGaughey	202-720-9210	katie.mcgaughey@usda.gov
Western and Central Europe, and North Africa	Bryan Purcell	202-690-0138	bryan.purcell@usda.gov
Russia, Ukraine, Kazakhstan, Moldova, and Belarus	Iliana Mladenova, Ph.D.	202-690-2315	iliana.mladenova@usda.gov
South Asia, Sri Lanka	Arnella Trent	202-720-0881	arnella.trent@usda.gov
Bangladesh, India, and Nepal			
East Asia, China, and Japan	Dath Mita, Ph.D.	202-720-7339	dath.mita@usda.gov
Sub-Saharan Africa,	Curt Reynolds, Ph.D.	202-690-0134	curt.reynolds@usda.gov
Nigeria and South Africa			
S.E. Asia, Indonesia, Thailand, Malaysia, Cambodia and Vietnam	Justin Jenkins	202-720-0419	justin.jenkins@usda.gov
Central America, Mexico, and Western United States	Ifeoma Collins	202-720-0240	ifeoma.collins@usda.gov
Australia, New Zealand, Pakistan	Jim Crutchfield	202-690-0135	james.crutchfield@usda.gov
Papua New Guinea and South Pacific Islands			
Middle East, Central Asia, Afghanistan	Aaron Mulhollen	202-690-0131	aaron.mulhollen@usda.gov
Iraq, Iran, and Syria			
Canada, Caribbean,	Aaron Mulhollen	202-690-0131	aaron.mulhollen@usda.gov
Eastern United States			
Brazil	Sunita Yadav-Pauletti, Ph.D.		sunita.yadav-pauletti@usda.gov



The Foreign Agricultural Service (FAS) updates its production, supply and distribution (PSD) database for cotton, oilseeds, and grains at 12:00 p.m. on the day the *World Agricultural Supply and Demand Estimates* (WASDE) report is released. This circular is released by 12:15 p.m.

FAS Reports and Databases:

World Agricultural Production

Current: <https://www.fas.usda.gov/data/world-agricultural-production>

Archive: <https://usda.library.cornell.edu/concern/publications/5q47rn72z?locale=en>

USDA's Foreign Agricultural Service (FAS) publishes a monthly report on crop acreage, yield and production in major countries worldwide. Sources include reporting from FAS's worldwide offices, official statistics of foreign governments, and analysis of economic data and satellite imagery. The reports reflect official USDA estimates released in the monthly *World Agricultural Supply and Demand Estimates* (WASDE).

World Markets and Trade

Current: <https://www.fas.usda.gov/data>

Archive:

https://usda.library.cornell.edu/catalog?f%5Bmember_of_collections_ssim%5D%5B%5D=Foreign+Agricultural+Service&locale=en

USDA's Foreign Agricultural Service (FAS) publishes monthly and quarterly reports which include data on U.S. and global trade, production, consumption and stocks, as well as analysis of developments affecting world trade in oilseeds, grains, cotton, livestock and poultry. The reports reflect official USDA estimates released in the monthly *World Agricultural Supply and Demand Estimates* (WASDE).

Global Agricultural Information Network (GAIN)

<https://gain.fas.usda.gov/>

USDA's Foreign Agricultural Service (FAS) provides timely reports on foreign markets through the Global Agriculture Information Network (GAIN) database. An average of 2,000 reports are added each year, with reports going back to 1995. GAIN reports are compiled by FAS' global market intelligence network, which includes FAS foreign service officers and locally engaged staff in over 90 overseas offices world-wide. They provide on-the-ground intelligence, insight, and analysis on nearly 200 countries, delivering information on foreign agricultural markets, crop conditions, and agro-political dynamics of interest to U.S. agriculture. GAIN reports contain assessments of commodity and trade issues made by USDA staff and are not necessarily statements of official U.S. government policy.

Production, Supply and Distribution (PS&D) Online

<https://apps.fas.usda.gov/psdonline/app/index.html#/app/home>

PSD Online is the public repository for USDA's Official Production, Supply and Distribution forecast data and reports for key agricultural commodities. PSD Online data are reviewed and updated monthly by an interagency committee chaired by USDA's World Agricultural Outlook Board (WAOB). The committee consist of representatives from Foreign Agricultural Service (FAS), the Economic Research Service (ERS), the Farm Service Agency (FSA), and the Agricultural Marketing Service (AMS).

EU Countries and Russia Wheat: Area and Production Estimates

<https://apps.fas.usda.gov/psdonline/app/index.html#/app/downloads> (click on PSD Datasets)

USDA's Foreign Agricultural Service (FAS) provides country-level area and production estimates for the nations of the European Union. For Russia, country-level area and production estimates are provided for Winter and Spring wheat. These datasets are reviewed and updated monthly by an interagency committee chaired by USDA's World Agricultural Outlook Board (WAOB) and can be downloaded through PSD datasets on PSD Online.



FAS Reports and Databases:

International Production Assessment (IPAD)

<https://ipad.fas.usda.gov/>

USDA's Foreign Agricultural Service (FAS) maintains a dynamic global crop production portal with key information including *World Agricultural Production* (WAP) briefs, Commodity Intelligence Reports (CIR), geospatial applications, crop production maps at a subnational level and crop calendars for the top-20 producing countries. Additionally, Crop Explorer (<https://ipad.fas.usda.gov/cropexplorer/>) displays rainfall, temperature, evapotranspiration, soil moisture, snow cover, and vegetation conditions in charts and maps.

USDA and NASA Global Agricultural Monitoring (GLAM)

<https://glam1.gsfc.nasa.gov/>

The USDA and NASA Global Agricultural Monitoring (GLAM) system provides near real-time and science quality Moderate Resolution Imaging Spectroradiometer (MODIS) Normalized Difference Vegetation Index (NDVI) from the satellites Terra and Aqua. The public can view and retrieve MODIS 8-day composited, global NDVI satellite imagery and time series data. GLAM was developed by NASA's Global Inventory Modeling and Mapping Studies (GIMMS) group for USDA's Foreign Agricultural Service.

Global Agricultural and Disaster Assessment System (GADAS)

<https://geo.fas.usda.gov/GADAS/index.html>

USDA's Foreign Agricultural Service (FAS) provides the Global Agricultural and Disaster Assessment System (GADAS), a web-based Geographic Information System (GIS) tool which integrates a vast array of highly detailed earth observation data streams, particularly targeted towards agricultural and disaster assessment analysis. GADAS is an interactive website which provides analysts with a wide variety of routine geospatial products (maps, charts, tables) they require for comprehensive situational investigations and recurring assessments.

Export Sales Reporting

<https://apps.fas.usda.gov/esrquery/>

USDA's Export Sales Reporting Program monitors U.S. agricultural export sales on a daily and weekly basis. Export sales reporting provides a constant stream of up-to-date market information for 40 U.S. agricultural commodities sold abroad. The weekly U.S. Export Sales report is the most currently available source of U.S. exports sales data. The data is used to analyze overall levels of export demand, determine where markets exit, and assess the relative position of U.S. commodities in foreign markets.

Global Agricultural Trade System (GATS)

<https://apps.fas.usda.gov/gats/default.aspx>

The Global Agricultural Trade System (GATS) is a searchable database containing monthly U.S. Census Bureau trade data organized by agricultural commodity and agricultural related product groups. Trade data is searchable by partner countries and partner groups. Historical U.S. agricultural trade data is available back to 1967. In addition, U.N. trade statistics (UN Comtrade) may be queried through GATS. UN trade data is available for nearly 200 countries or areas, dating from the inception of the Harmonized System (HS) of trade codes in 1989 to present. The database is continuously updated. U.S. trade data is updated monthly according to the U.S. Census Bureau's reporting system. UN Comtrade data are updated in GATS after nationally submitted data to the UN are standardized by the UN Statistical Division and added to the UN Comtrade database.

Other USDA Reports:

World Agricultural Supply and Demand Estimates (WASDE):

<http://www.usda.gov/oce/commodity/wasde/>

Economic Research Service:

<http://www.ers.usda.gov/topics/crops>

National Agricultural Statistics Service:

<http://www.nass.usda.gov/Publications/>

Table 01 World Crop Production Summary

Million Metric Tons

Commodity	World -	Total Foreign	North America			Former Soviet		European	Asia (WAP)					South America		Selected Other			All Others
			United States	Canada -	Mexico -	Russia -	Ukraine -		China -	India -	Indonesia	Pakistan	Thailand	Argentina	Brazil -	Australia	South Africa	Turkey -	
---Million metric tons---																			
Wheat																			
2021/22	781.0	736.2	44.8	22.4	3.3	75.2	33.0	nr	136.9	109.6	0.0	27.5	0.0	22.2	7.7	36.2	2.3	16.0	244.0
2022/23 prel.	789.5	744.6	44.9	34.3	3.6	92.0	21.5	nr	137.7	104.0	0.0	26.4	0.0	12.6	10.6	39.7	2.1	17.3	242.9
2023/24 proj.																			
Sep	787.3	740.1	47.2	31.0	3.4	85.0	22.5	nr	137.0	113.5	0.0	28.0	0.0	16.5	10.3	26.0	2.2	19.5	245.2
Oct	783.4	734.1	49.3	31.0	3.5	85.0	22.5	nr	137.0	113.5	0.0	28.0	0.0	16.5	9.8	24.5	2.2	19.5	241.2
Coarse Grains																			
2021/22	1,503.6	1,105.9	397.7	25.1	32.8	38.5	53.5	nr	280.9	51.4	12.7	11.0	5.4	58.6	120.6	19.2	16.6	11.6	367.9
2022/23 prel.	1,444.4	1,086.3	358.1	30.5	33.8	44.1	33.9	nr	285.5	54.5	12.9	9.9	5.3	40.7	141.6	18.7	17.5	14.8	342.6
2023/24 proj.																			
Sep	1,496.5	1,097.4	399.1	26.7	33.2	39.8	34.5	nr	285.3	53.6	13.1	11.0	5.5	63.4	134.3	13.3	17.4	17.0	349.3
Oct	1,494.6	1,097.6	396.9	26.4	33.2	39.8	34.6	nr	285.3	53.6	13.1	11.0	5.5	63.6	134.3	13.0	17.4	17.0	349.9
Rice, Milled																			
2021/22	514.3	508.3	6.1	0.0	0.2	0.7	0.0	nr	149.0	129.5	34.4	9.3	19.9	0.8	7.3	0.5	0.0	0.5	156.1
2022/23 prel.	513.7	508.6	5.1	0.0	0.1	0.6	0.0	nr	145.9	136.0	34.0	5.5	20.9	0.8	7.0	0.4	0.0	0.6	156.8
2023/24 proj.																			
Sep	518.1	511.1	7.0	0.0	0.2	0.7	0.0	nr	149.0	132.0	34.5	9.0	19.5	0.8	6.8	0.5	0.0	0.5	157.5
Oct	518.1	511.1	7.0	0.0	0.2	0.7	0.0	nr	149.0	132.0	34.5	9.0	19.5	0.8	6.8	0.5	0.0	0.5	157.6
Total Grains																			
2021/22	2,798.9	2,350.3	448.6	47.5	36.2	114.4	86.6	nr	566.8	290.4	47.1	47.8	25.2	81.6	135.7	56.0	18.9	28.1	768.1
2022/23 prel.	2,747.6	2,339.5	408.1	64.9	37.5	136.7	55.4	nr	569.2	294.5	46.9	41.8	26.2	54.0	159.2	58.7	19.6	32.6	742.3
2023/24 proj.																			
Sep	2,801.9	2,348.6	453.3	57.7	36.8	125.5	57.0	nr	571.3	299.1	47.6	48.0	25.0	80.7	151.4	39.9	19.6	37.0	752.0
Oct	2,796.1	2,342.9	453.2	57.4	36.9	125.5	57.1	nr	571.3	299.1	47.6	48.0	25.0	80.9	150.9	38.1	19.6	37.0	748.6
Oilseeds																			
2021/22	611.7	480.4	131.4	20.5	0.9	23.1	24.3	nr	62.1	43.2	14.3	3.3	1.0	49.9	135.2	8.7	3.4	3.4	87.2
2022/23 prel.	629.2	503.4	125.8	25.3	0.9	26.6	19.8	nr	68.0	42.3	14.8	2.7	1.0	31.6	161.0	10.1	3.8	4.0	91.6
2023/24 proj.																			
Sep	660.9	538.7	122.2	25.0	0.8	27.0	23.1	nr	67.3	42.1	14.9	3.7	1.0	53.7	168.7	6.8	4.0	3.2	97.3
Oct	659.4	538.5	120.9	24.6	0.8	27.0	23.1	nr	67.3	40.9	14.9	3.7	1.0	54.5	168.9	6.7	4.0	3.1	97.8
Cotton																			
2021/22	114.6	97.1	17.5	0.0	1.2	0.0	0.0	1.7	26.8	24.4	0.0	6.0	0.0	1.4	10.8	5.9	0.1	3.8	15.1
2022/23 prel.	116.3	101.8	14.5	0.0	1.6	0.0	0.0	1.6	30.7	26.0	0.0	3.9	0.0	1.5	11.7	5.8	0.1	4.9	14.0
2023/24 proj.																			
Sep	112.4	99.3	13.1	0.0	1.1	0.0	0.0	1.2	27.0	25.0	0.0	6.5	0.0	1.2	13.8	5.4	0.1	3.5	14.5
Oct	112.6	99.8	12.8	0.0	1.1	0.0	0.0	1.1	27.0	25.0	0.0	6.5	0.0	1.3	14.6	5.1	0.1	3.5	14.6

1/ Includes wheat, coarse grains, and rice (milled) shown above.

Table 02 Wheat Area, Yield, and Production

Country / Region	Area (Million hectares)				Yield (Metric tons per hectare)				Production (Million metric tons)				Change in Production			
	2021/22	Prel.	2023/24 Proj.		2021/22	Prel.	2023/24 Proj.		2021/22	Prel.	2023/24 Proj.		From last month		From last year	
		2022/23	Sep	Oct		2022/23	Sep	Oct		2022/23	Sep	Oct	MMT	Percent	MMT	Percent
World	221.92	220.61	223.93	223.10	3.52	3.58	3.52	3.51	781.01	789.50	787.34	783.43	-3.91	-0.50	-6.07	-0.77
United States	15.03	14.36	15.33	15.08	2.98	3.13	3.08	3.27	44.80	44.90	47.20	49.31	2.12	4.49	4.42	9.84
Total Foreign	206.88	206.25	208.60	208.01	3.56	3.61	3.55	3.53	736.21	744.60	740.14	734.12	-6.02	-0.81	-10.48	-1.41
European Union	24.29	24.38	24.25	24.25	5.69	5.50	5.53	5.53	138.16	134.19	134.00	134.00	0.00	0.00	-0.19	-0.14
United Kingdom	1.79	1.81	1.75	1.75	7.81	8.59	8.43	8.43	13.99	15.54	14.75	14.75	0.00	0.00	-0.79	-5.08
Serbia	0.60	0.62	0.73	0.73	5.71	5.16	4.97	4.97	3.40	3.20	3.60	3.60	0.00	0.00	0.40	12.50
China	23.57	23.52	23.70	23.70	5.81	5.86	5.78	5.78	136.95	137.72	137.00	137.00	0.00	0.00	-0.72	-0.52
South Asia																
India	31.13	30.46	32.00	32.00	3.52	3.41	3.55	3.55	109.59	104.00	113.50	113.50	0.00	0.00	9.50	9.13
Pakistan	9.17	9.00	8.86	8.86	3.00	2.93	3.16	3.16	27.46	26.40	28.00	28.00	0.00	0.00	1.60	6.06
Afghanistan	2.05	2.20	2.35	2.35	2.45	2.05	2.20	2.20	5.02	4.50	5.17	5.17	0.00	0.00	0.67	14.89
Nepal	0.72	0.72	0.72	0.72	2.99	2.99	3.02	3.02	2.15	2.15	2.18	2.18	0.00	0.00	0.03	1.16
Former Soviet Union - 12																
Russia	27.63	29.00	28.30	28.30	2.72	3.17	3.00	3.00	75.16	92.00	85.00	85.00	0.00	0.00	-7.00	-7.61
Russia Winter	15.22	16.30	14.60	14.60	3.43	4.17	4.14	4.14	52.19	68.00	60.50	60.50	0.00	0.00	-7.50	-11.03
Russia Spring	12.41	12.70	13.70	13.70	1.85	1.89	1.79	1.79	22.96	24.00	24.50	24.50	0.00	0.00	0.50	2.08
Ukraine	7.41	5.60	5.00	5.00	4.45	3.84	4.50	4.50	33.01	21.50	22.50	22.50	0.00	0.00	1.00	4.65
Kazakhstan	12.72	12.81	13.60	13.60	0.93	1.28	1.10	0.96	11.81	16.40	15.00	13.00	-2.00	-13.33	-3.40	-20.75
Uzbekistan	1.24	1.40	1.40	1.40	4.83	4.48	4.50	4.50	5.99	6.27	6.30	6.30	0.00	0.00	0.03	0.48
Belarus	0.65	0.68	0.68	0.68	3.54	3.48	3.38	3.38	2.30	2.35	2.30	2.30	0.00	0.00	-0.05	-2.13
Canada	9.20	10.08	10.60	10.60	2.44	3.41	2.92	2.92	22.42	34.34	31.00	31.00	0.00	0.00	-3.34	-9.71
South America																
Argentina	6.55	5.50	5.50	5.50	3.38	2.28	3.00	3.00	22.15	12.55	16.50	16.50	0.00	0.00	3.95	31.47
Brazil	2.74	3.09	3.40	3.40	2.81	3.43	3.03	2.88	7.70	10.60	10.30	9.80	-0.50	-4.85	-0.80	-7.55
Australia	12.73	13.05	12.60	12.60	2.85	3.04	2.06	1.94	36.24	39.69	26.00	24.50	-1.50	-5.77	-15.19	-38.26
Africa																
Egypt	1.44	1.45	1.35	1.35	6.85	6.55	6.57	6.57	9.84	9.50	8.87	8.87	0.00	0.00	-0.63	-6.63
Morocco	2.86	2.50	2.55	2.55	2.64	1.08	1.63	1.63	7.54	2.70	4.16	4.16	0.00	0.00	1.46	54.07
Algeria	2.08	2.08	2.08	2.08	1.20	1.78	1.30	1.30	2.50	3.70	2.70	2.70	0.00	0.00	-1.00	-27.03
Ethiopia	1.95	1.90	2.50	1.90	2.83	3.05	3.00	2.89	5.52	5.80	7.50	5.50	-2.00	-26.67	-0.30	-5.17
Middle East																
Turkey	7.05	6.80	7.20	7.20	2.27	2.54	2.71	2.71	16.00	17.25	19.50	19.50	0.00	0.00	2.25	13.04
Iran	6.00	6.20	6.20	6.20	2.00	2.13	2.26	2.26	12.00	13.20	14.00	14.00	0.00	0.00	0.80	6.06
Iraq	2.00	2.00	2.20	2.20	1.75	1.50	1.91	1.91	3.50	3.00	4.20	4.20	0.00	0.00	1.20	40.00
Syria	1.57	1.50	1.20	1.20	1.25	1.40	2.00	2.00	1.95	2.10	2.40	2.40	0.00	0.00	0.30	14.29
Mexico	0.55	0.59	0.55	0.56	6.00	6.07	6.25	6.19	3.28	3.57	3.44	3.47	0.03	0.76	-0.11	-3.00
Others	7.24	7.32	7.34	7.34	2.85	2.78	2.76	2.75	20.60	20.38	20.28	20.23	-0.05	-0.25	-0.16	-0.77

Table 03 Total Coarse Grain Area, Yield, and Production

Country / Region	Area (Million hectares)				Yield (Metric tons per hectare)				Production (Million metric tons)				Change in Production						
	2021/22	Prel.		2023/24 Proj.		2021/22	Prel.		2023/24 Proj.		2021/22	Prel.		2023/24 Proj.		From last month		From last year	
		2022/23	Sep	Oct	2022/23		Sep	Oct	2022/23	Sep		Oct	MMT	Percent	MMT	Percent			
World	344.95	335.41	340.28	340.15	4.36	4.31	4.40	4.39	1,503.56	1,444.43	1,496.50	1,494.55	-1.95	-0.13	50.12	3.47			
United States	38.34	35.35	39.24	39.28	10.37	10.13	10.17	10.10	397.71	358.10	399.10	396.91	-2.19	-0.55	38.81	10.84			
Total Foreign	306.61	300.06	301.04	300.87	3.61	3.62	3.65	3.65	1,105.85	1,086.33	1,097.41	1,097.65	0.24	0.02	11.31	1.04			
China	45.77	45.52	45.44	45.44	6.14	6.27	6.28	6.28	280.85	285.50	285.30	285.30	0.00	0.00	-0.20	-0.07			
European Union	27.70	26.54	26.03	25.93	5.59	5.01	5.23	5.26	154.80	132.92	136.10	136.25	0.16	0.11	3.33	2.51			
United Kingdom	1.43	1.34	1.39	1.39	5.88	6.46	6.00	6.00	8.41	8.67	8.33	8.33	0.00	0.00	-0.34	-3.95			
South America																			
Brazil	23.37	24.10	24.77	24.77	5.16	5.88	5.42	5.42	120.62	141.60	134.33	134.33	0.00	0.00	-7.28	-5.14			
Argentina	9.62	9.13	9.58	9.48	6.10	4.46	6.62	6.71	58.64	40.72	63.38	63.58	0.20	0.32	22.86	56.14			
Former Soviet Union - 12																			
Russia	14.01	13.60	12.90	12.90	2.75	3.25	3.09	3.09	38.54	44.13	39.80	39.80	0.00	0.00	-4.33	-9.82			
Ukraine	8.66	6.32	5.92	5.92	6.18	5.37	5.83	5.84	53.51	33.93	34.47	34.57	0.10	0.29	0.65	1.90			
Kazakhstan	2.63	2.63	2.95	2.95	1.43	1.79	1.49	1.39	3.76	4.71	4.40	4.10	-0.30	-6.83	-0.62	-13.08			
Belarus	0.99	1.03	1.05	1.05	3.05	3.11	3.09	3.09	3.00	3.20	3.23	3.23	0.00	0.00	0.03	0.94			
Africa																			
Nigeria	13.70	13.50	13.40	13.40	1.56	1.59	1.54	1.54	21.40	21.51	20.70	20.70	0.00	0.00	-0.81	-3.75			
South Africa	3.19	3.13	3.20	3.20	5.22	5.61	5.44	5.44	16.64	17.53	17.39	17.39	0.00	0.00	-0.14	-0.80			
Tanzania	5.74	5.30	5.30	5.30	1.47	1.36	1.36	1.36	8.45	7.23	7.23	7.23	0.00	0.00	0.00	0.00			
Burkina Faso	4.20	4.24	4.20	4.20	1.00	1.16	1.13	1.13	4.20	4.92	4.75	4.75	0.00	0.00	-0.17	-3.49			
Ethiopia	5.60	5.64	5.65	5.65	3.10	3.19	3.24	3.24	17.37	17.95	18.30	18.30	0.00	0.00	0.35	1.95			
Egypt	1.17	1.16	1.18	1.18	7.11	7.13	7.15	7.15	8.31	8.30	8.46	8.46	0.00	0.00	0.16	1.93			
Mali	5.16	4.80	4.80	4.80	1.23	1.49	1.42	1.42	6.34	7.15	6.80	6.80	0.00	0.00	-0.35	-4.87			
India	23.35	23.80	24.34	24.34	2.20	2.29	2.20	2.20	51.39	54.53	53.59	53.59	0.00	0.00	-0.94	-1.72			
Southeast Asia																			
Indonesia	3.90	3.95	4.00	4.00	3.26	3.27	3.28	3.28	12.70	12.90	13.10	13.10	0.00	0.00	0.20	1.55			
Philippines	2.56	2.50	2.57	2.57	3.26	3.32	3.27	3.27	8.34	8.30	8.40	8.40	0.00	0.00	0.10	1.20			
Vietnam	0.90	0.89	0.83	0.83	4.92	4.99	4.94	4.94	4.45	4.42	4.10	4.10	0.00	0.00	-0.32	-7.30			
Thailand	1.23	1.21	1.28	1.28	4.36	4.35	4.27	4.27	5.35	5.25	5.45	5.45	0.00	0.00	0.20	3.81			
Mexico	8.88	8.63	9.04	8.94	3.69	3.91	3.68	3.72	32.79	33.80	33.24	33.24	0.00	0.00	-0.56	-1.66			
Canada	5.91	5.74	5.26	5.26	4.25	5.32	5.08	5.02	25.12	30.54	26.71	26.38	-0.33	-1.22	-4.16	-13.61			
Australia	6.69	5.68	5.63	5.63	2.87	3.29	2.37	2.32	19.22	18.66	13.34	13.04	-0.30	-2.25	-5.62	-30.09			
Middle East																			
Turkey	4.46	4.55	4.57	4.57	2.60	3.25	3.72	3.72	11.58	14.77	16.97	16.97	0.00	0.00	2.20	14.89			
Iran	1.91	1.86	1.86	1.86	2.16	2.38	2.38	2.38	4.12	4.42	4.42	4.42	0.00	0.00	0.00	-0.02			
Others	73.88	73.28	73.94	74.07	1.70	1.62	1.69	1.70	125.96	118.79	125.14	125.85	0.71	0.57	7.06	5.95			

World and Selected Countries and Regions; Coarse Grain includes: Barley, Corn, Millet, Mixed Grains, Oats, Rye and Sorghum

Table 04 Corn Area, Yield, and Production

Country / Region	Area (Million hectares)				Yield (Metric tons per hectare)				Production (Million metric tons)				Change in Production			
	2021/22	Prel.	2023/24 Proj.		2021/22	Prel.	2023/24 Proj.		2021/22	Prel.	2023/24 Proj.		From last month		From last year	
		2022/23	Sep	Oct		2022/23	Sep	Oct		2022/23	Sep	Oct	MMT	Percent	MMT	Percent
World	207.30	200.87	204.63	204.74	5.88	5.75	5.93	5.93	1,218.71	1,154.99	1,214.29	1,214.47	0.19	0.02	59.48	5.15
United States	34.53	32.02	35.25	35.25	11.09	10.88	10.91	10.86	382.89	348.37	384.42	382.65	-1.77	-0.46	34.29	9.84
Total Foreign	172.77	168.85	169.38	169.49	4.84	4.78	4.90	4.91	835.82	806.62	829.87	831.82	1.95	0.23	25.20	3.12
China	43.32	43.07	43.00	43.00	6.29	6.44	6.44	6.44	272.55	277.20	277.00	277.00	0.00	0.00	-0.20	-0.07
South America																
Brazil	21.80	22.40	22.90	22.90	5.32	6.12	5.63	5.63	116.00	137.00	129.00	129.00	0.00	0.00	-8.00	-5.84
Argentina	7.10	6.70	7.00	7.10	6.97	5.07	7.71	7.75	49.50	34.00	54.00	55.00	1.00	1.85	21.00	61.76
Bolivia	0.41	0.44	0.43	0.43	2.42	2.52	2.62	2.62	0.99	1.10	1.13	1.13	0.00	0.00	0.03	2.27
European Union	9.23	8.82	8.22	8.22	7.75	5.92	7.23	7.27	71.52	52.23	59.40	59.70	0.30	0.51	7.47	14.30
Africa																
South Africa	3.00	2.95	3.00	3.00	5.38	5.81	5.60	5.60	16.14	17.10	16.80	16.80	0.00	0.00	-0.30	-1.75
Nigeria	6.00	5.80	5.70	5.70	2.12	2.20	2.11	2.11	12.75	12.74	12.00	12.00	0.00	0.00	-0.74	-5.77
Ethiopia	2.53	2.55	2.56	2.56	3.72	4.00	4.06	4.06	9.40	10.20	10.40	10.40	0.00	0.00	0.20	1.96
Egypt	0.93	0.93	0.95	0.95	8.00	8.00	8.00	8.00	7.44	7.44	7.60	7.60	0.00	0.00	0.16	2.15
Tanzania	4.40	4.00	4.00	4.00	1.60	1.48	1.48	1.48	7.04	5.90	5.90	5.90	0.00	0.00	0.00	0.00
Malawi	1.75	1.82	1.79	1.79	2.62	2.05	1.96	1.96	4.58	3.72	3.51	3.51	0.00	0.00	-0.21	-5.57
Zambia	1.41	1.37	1.42	1.42	2.57	1.94	2.30	2.30	3.62	2.65	3.26	3.26	0.00	0.00	0.61	22.95
Kenya	2.17	1.90	2.00	2.00	1.52	1.53	1.60	1.60	3.30	2.90	3.20	3.20	0.00	0.00	0.30	10.34
Uganda	1.10	1.10	1.10	1.10	2.55	2.55	2.55	2.55	2.80	2.80	2.80	2.80	0.00	0.00	0.00	0.00
Zimbabwe	1.95	1.90	1.80	1.80	1.39	0.76	0.83	0.83	2.72	1.45	1.50	1.50	0.00	0.00	0.05	3.23
Former Soviet Union - 12																
Ukraine	5.49	4.05	4.00	4.00	7.68	6.67	7.00	7.00	42.13	27.00	28.00	28.00	0.00	0.00	1.00	3.70
Russia	2.90	2.64	2.50	2.50	5.25	6.00	5.84	5.84	15.23	15.83	14.60	14.60	0.00	0.00	-1.23	-7.78
South Asia																
India	9.96	10.10	10.00	10.00	3.39	3.56	3.43	3.43	33.73	36.00	34.30	34.30	0.00	0.00	-1.70	-4.72
Pakistan	1.65	1.60	1.65	1.65	6.43	5.83	6.36	6.36	10.64	9.33	10.50	10.50	0.00	0.00	1.17	12.53
Nepal	0.97	0.97	0.97	0.97	2.82	2.82	2.82	2.82	2.72	2.72	2.72	2.72	0.00	0.00	0.00	0.00
Southeast Asia																
Indonesia	3.90	3.95	4.00	4.00	3.26	3.27	3.28	3.28	12.70	12.90	13.10	13.10	0.00	0.00	0.20	1.55
Philippines	2.56	2.50	2.57	2.57	3.26	3.32	3.27	3.27	8.34	8.30	8.40	8.40	0.00	0.00	0.10	1.20
Vietnam	0.90	0.89	0.83	0.83	4.92	4.99	4.94	4.94	4.45	4.42	4.10	4.10	0.00	0.00	-0.32	-7.30
Thailand	1.20	1.18	1.25	1.25	4.42	4.41	4.32	4.32	5.30	5.20	5.40	5.40	0.00	0.00	0.20	3.85
Mexico	7.09	6.89	7.25	7.15	3.77	4.06	3.78	3.83	26.76	28.00	27.40	27.40	0.00	0.00	-0.60	-2.14
Canada	1.46	1.44	1.50	1.50	9.99	10.07	10.20	10.20	14.61	14.54	15.30	15.30	0.00	0.00	0.76	5.23
Turkey	0.54	0.53	0.65	0.65	12.04	12.83	12.62	12.62	6.50	6.80	8.20	8.20	0.00	0.00	1.40	20.59
Others	27.04	26.38	26.35	26.46	2.68	2.55	2.67	2.68	72.38	67.15	70.35	71.00	0.65	0.92	3.85	5.73

World and Selected Countries and Regions

Table 05 Barley Area, Yield, and Production

Country / Region	Area (Million hectares)				Yield (Metric tons per hectare)				Production (Million metric tons)				Change in Production			
	Prel.		2023/24 Proj.		Prel.		2023/24 Proj.		Prel.		2023/24 Proj.		From last month		From last year	
	2021/22	2022/23	Sep	Oct	2021/22	2022/23	Sep	Oct	2021/22	2022/23	Sep	Oct	MMT	Percent	MMT	Percent
World	49.78	47.22	47.15	47.27	2.92	3.21	3.01	3.00	145.34	151.70	141.89	141.77	-0.12	-0.08	-9.93	-6.55
United States	0.81	0.99	0.97	1.03	3.25	3.85	4.04	3.90	2.62	3.81	3.92	4.03	0.11	2.81	0.22	5.72
Total Foreign	48.98	46.23	46.18	46.24	2.91	3.20	2.99	2.98	142.72	147.89	137.97	137.74	-0.23	-0.17	-10.15	-6.86
European Union	10.27	10.29	10.34	10.37	5.06	5.02	4.69	4.69	52.01	51.65	48.45	48.65	0.20	0.41	-3.00	-5.80
United Kingdom	1.15	1.10	1.15	1.15	6.05	6.69	6.22	6.22	6.96	7.39	7.15	7.15	0.00	0.00	-0.24	-3.18
Former Soviet Union - 12																
Russia	7.69	7.75	7.50	7.50	2.28	2.77	2.60	2.60	17.51	21.50	19.50	19.50	0.00	0.00	-2.00	-9.30
Ukraine	2.68	1.95	1.60	1.60	3.70	3.13	3.56	3.63	9.92	6.10	5.70	5.80	0.10	1.75	-0.30	-4.92
Kazakhstan	2.16	2.18	2.50	2.50	1.10	1.51	1.20	1.08	2.37	3.29	3.00	2.70	-0.30	-10.00	-0.59	-17.86
Belarus	0.35	0.40	0.40	0.40	2.86	2.75	2.75	2.75	1.00	1.10	1.10	1.10	0.00	0.00	0.00	0.00
Azerbaijan	0.37	0.38	0.38	0.38	3.07	2.93	2.93	2.93	1.15	1.10	1.10	1.10	0.00	0.00	0.00	0.00
Canada	3.01	2.64	2.70	2.70	2.32	3.79	2.96	2.96	6.98	9.99	8.00	8.00	0.00	0.00	-1.99	-19.90
Australia	5.10	4.13	4.20	4.20	2.81	3.43	2.38	2.31	14.34	14.14	10.00	9.70	-0.30	-3.00	-4.44	-31.39
Middle East																
Turkey	3.70	3.80	3.70	3.70	1.22	1.95	2.22	2.22	4.50	7.40	8.20	8.20	0.00	0.00	0.80	10.81
Iran	1.70	1.65	1.65	1.65	1.59	1.82	1.82	1.82	2.70	3.00	3.00	3.00	0.00	0.00	0.00	0.00
Iraq	0.60	0.60	0.60	0.60	1.17	1.13	1.33	1.33	0.70	0.68	0.80	0.80	0.00	0.00	0.12	17.65
Syria	1.44	0.90	0.90	0.90	0.18	0.78	1.22	1.22	0.25	0.70	1.10	1.10	0.00	0.00	0.40	57.14
Africa																
Ethiopia	0.96	0.97	0.98	0.98	2.45	2.47	2.46	2.46	2.35	2.40	2.40	2.40	0.00	0.00	0.00	0.00
Morocco	1.49	1.10	1.20	1.20	1.87	0.64	1.13	1.13	2.78	0.70	1.35	1.35	0.00	0.00	0.65	92.86
Algeria	1.03	1.03	1.03	1.03	0.93	1.56	1.00	1.00	0.95	1.60	1.03	1.03	0.00	0.00	-0.58	-35.94
Tunisia	0.28	0.30	0.20	0.20	1.54	1.53	0.85	0.85	0.43	0.46	0.17	0.17	0.00	0.00	-0.29	-63.04
South Africa	0.10	0.10	0.11	0.11	3.52	2.99	3.62	3.55	0.33	0.30	0.38	0.39	0.01	2.63	0.09	29.14
South America																
Argentina	1.34	1.57	1.40	1.40	3.96	2.88	3.79	3.79	5.30	4.50	5.30	5.30	0.00	0.00	0.80	17.78
Uruguay	0.22	0.21	0.18	0.18	4.11	4.25	4.17	4.17	0.92	0.90	0.75	0.75	0.00	0.00	-0.15	-16.39
Brazil	0.11	0.12	0.13	0.13	3.79	3.92	3.96	3.96	0.43	0.48	0.50	0.50	0.00	0.00	0.01	2.70
India	0.59	0.45	0.74	0.74	2.80	3.02	2.30	2.30	1.66	1.37	1.69	1.69	0.00	0.00	0.32	23.36
China	0.51	0.51	0.50	0.50	3.92	3.92	4.00	4.00	2.00	2.00	2.00	2.00	0.00	0.00	0.00	0.00
Mexico	0.35	0.30	0.33	0.33	3.11	2.69	2.92	2.92	1.09	0.80	0.95	0.95	0.00	0.00	0.16	19.50
Afghanistan	0.04	0.08	0.08	0.08	1.63	1.38	1.38	1.38	0.07	0.11	0.11	0.11	0.00	0.00	0.00	0.00
Others	1.74	1.74	1.72	1.74	2.32	2.45	2.48	2.48	4.04	4.26	4.25	4.31	0.06	1.41	0.06	1.36

World and Selected Countries and Regions

Table 06 Oats Area, Yield, and Production

Country / Region	Area (Million hectares)				Yield (Metric tons per hectare)				Production (Million metric tons)				Change in Production			
	Prel.		2023/24 Proj.		Prel.		2023/24 Proj.		Prel.		2023/24 Proj.		From last month		From last year	
	2021/22	2022/23	Sep	Oct	2021/22	2022/23	Sep	Oct	2021/22	2022/23	Sep	Oct	MMT	Percent	MMT	Percent
World	9.63	9.35	8.36	8.41	2.36	2.70	2.46	2.43	22.68	25.27	20.57	20.45	-0.12	-0.58	-4.83	-19.10
United States	0.26	0.36	0.33	0.34	2.20	2.33	2.21	2.46	0.58	0.84	0.72	0.83	0.11	15.32	-0.01	-1.08
Total Foreign	9.36	8.99	8.03	8.07	2.36	2.72	2.47	2.43	22.10	24.44	19.85	19.62	-0.23	-1.16	-4.82	-19.72
European Union	2.54	2.36	2.27	2.31	2.93	3.20	2.94	2.92	7.46	7.55	6.67	6.75	0.08	1.20	-0.80	-10.64
Former Soviet Union - 12																
Russia	2.17	2.13	1.80	1.80	1.72	2.11	1.94	1.94	3.73	4.50	3.50	3.50	0.00	0.00	-1.00	-22.22
Ukraine	0.18	0.15	0.15	0.15	2.61	2.47	2.33	2.33	0.48	0.38	0.35	0.35	0.00	0.00	-0.03	-7.89
Belarus	0.15	0.16	0.16	0.16	2.33	2.42	2.26	2.26	0.35	0.38	0.35	0.35	0.00	0.00	-0.03	-6.67
Kazakhstan	0.20	0.20	0.19	0.19	0.90	1.16	1.16	1.16	0.18	0.23	0.22	0.22	0.00	0.00	-0.01	-3.93
Canada	1.21	1.40	0.85	0.85	2.39	3.73	3.29	2.94	2.90	5.23	2.80	2.50	-0.30	-10.71	-2.73	-52.16
South America																
Argentina	0.35	0.26	0.29	0.29	2.07	1.67	2.14	2.14	0.73	0.43	0.61	0.61	0.00	0.00	0.18	42.19
Brazil	0.50	0.50	0.51	0.51	2.27	2.38	2.39	2.39	1.14	1.19	1.22	1.22	0.00	0.00	0.03	2.52
Chile	0.12	0.07	0.10	0.10	4.70	4.38	4.74	4.74	0.58	0.32	0.45	0.45	0.00	0.00	0.14	42.86
Uruguay	0.01	0.02	0.01	0.01	2.21	2.40	2.20	2.20	0.03	0.04	0.02	0.02	0.00	0.00	-0.01	-38.89
Oceania																
Australia	0.84	0.75	0.70	0.70	2.06	2.13	1.57	1.57	1.74	1.59	1.10	1.10	0.00	0.00	-0.49	-30.69
New Zealand	0.00	0.01	0.01	0.01	6.25	5.67	5.67	5.67	0.03	0.03	0.03	0.03	0.00	0.00	0.00	0.00
China	0.41	0.41	0.41	0.41	1.48	1.48	1.48	1.48	0.60	0.60	0.60	0.60	0.00	0.00	0.00	0.00
Africa																
Algeria	0.08	0.08	0.08	0.08	1.31	1.31	1.31	1.31	0.11	0.11	0.11	0.11	0.00	0.00	0.00	0.00
Morocco	0.02	0.02	0.01	0.01	0.33	0.40	0.31	0.31	0.01	0.01	0.00	0.00	0.00	0.00	0.00	-33.33
South Africa	0.04	0.03	0.03	0.03	1.64	1.04	2.00	1.79	0.06	0.03	0.06	0.05	-0.01	-16.67	0.02	78.57
Other Europe																
United Kingdom	0.20	0.17	0.17	0.17	5.62	5.79	5.45	5.45	1.12	1.01	0.90	0.90	0.00	0.00	-0.11	-10.63
Norway	0.07	0.07	0.07	0.07	4.29	4.29	4.29	4.29	0.30	0.30	0.30	0.30	0.00	0.00	0.00	0.00
Serbia	0.02	0.02	0.02	0.02	3.11	2.80	3.00	3.00	0.06	0.04	0.06	0.06	0.00	0.00	0.02	42.86
Albania	0.02	0.02	0.02	0.02	2.20	2.20	2.27	2.27	0.03	0.03	0.03	0.03	0.00	0.00	0.00	3.03
Bosnia and Herzegovina	0.01	0.01	0.01	0.01	2.82	4.00	3.43	3.43	0.03	0.04	0.02	0.02	0.00	0.00	-0.02	-45.45
Turkey	0.11	0.11	0.11	0.11	2.38	2.38	2.38	2.38	0.25	0.25	0.25	0.25	0.00	0.00	0.00	0.00
Mexico	0.05	0.05	0.05	0.05	2.02	2.22	2.00	2.00	0.09	0.11	0.09	0.09	0.00	0.00	-0.02	-20.35
Others	0.06	0.03	0.06	0.06	1.66	1.63	1.68	1.68	0.10	0.05	0.09	0.09	0.00	0.00	0.04	80.77

World and Selected Countries and Regions

Table 07 Rye Area, Yield, and Production

Country / Region	Area (Million hectares)				Yield (Metric tons per hectare)				Production (Million metric tons)				Change in Production			
	Prel.		2023/24 Proj.		Prel.		2023/24 Proj.		Prel.		2023/24 Proj.		From last month		From last year	
	2021/22	2022/23	Sep	Oct	2021/22	2022/23	Sep	Oct	2021/22	2022/23	Sep	Oct	MMT	Percent	MMT	Percent
World	4.03	3.69	3.60	3.61	3.10	3.32	3.23	3.24	12.51	12.23	11.62	11.69	0.07	0.60	-0.54	-4.41
United States	0.12	0.14	0.16	0.13	2.09	2.26	2.19	2.03	0.25	0.31	0.36	0.26	-0.10	-26.46	-0.05	-15.38
Total Foreign	3.92	3.55	3.43	3.48	3.13	3.36	3.28	3.29	12.27	11.92	11.26	11.42	0.17	1.47	-0.49	-4.12
European Union	1.93	1.76	1.81	1.85	4.15	4.29	4.09	4.10	8.01	7.57	7.39	7.58	0.19	2.57	0.01	0.13
Former Soviet Union - 12																
Russia	0.99	0.88	0.80	0.80	1.73	2.27	2.25	2.25	1.72	2.00	1.80	1.80	0.00	0.00	-0.20	-10.00
Belarus	0.33	0.30	0.31	0.31	2.46	2.50	2.52	2.52	0.80	0.75	0.78	0.78	0.00	0.00	0.03	4.00
Ukraine	0.18	0.10	0.08	0.08	3.43	3.15	2.88	2.88	0.60	0.32	0.23	0.23	0.00	0.00	-0.09	-26.98
Kazakhstan	0.04	0.03	0.02	0.02	0.91	1.76	1.36	1.36	0.04	0.06	0.03	0.03	0.00	0.00	-0.03	-50.00
Turkey	0.12	0.11	0.11	0.11	2.87	2.91	2.91	2.91	0.33	0.32	0.32	0.32	0.00	0.00	0.00	0.00
Canada	0.12	0.15	0.12	0.12	3.21	3.42	3.26	3.04	0.37	0.52	0.38	0.35	-0.03	-6.67	-0.17	-32.69
South America																
Chile	0.00	0.00	0.00	0.00	5.00	5.00	0.00	0.00	0.01	0.01	0.00	0.00	0.00	100.00	-0.01	-100.00
Argentina	0.12	0.11	0.09	0.09	1.88	1.66	1.83	1.83	0.23	0.18	0.17	0.17	0.00	0.00	-0.01	-7.82
Other Europe																
Bosnia and Herzegovina	0.00	0.00	0.00	0.00	3.00	3.00	3.00	3.00	0.01	0.01	0.01	0.01	0.00	0.00	0.00	0.00
Switzerland	0.00	0.00	0.00	0.00	5.50	5.50	5.50	5.50	0.01	0.01	0.01	0.01	0.00	0.00	0.00	0.00
Serbia	0.01	0.01	0.01	0.01	3.80	3.00	3.33	3.33	0.02	0.02	0.02	0.02	0.00	0.00	0.00	11.11
Australia	0.05	0.05	0.05	0.05	0.71	0.71	0.71	0.71	0.03	0.03	0.03	0.03	0.00	0.00	0.00	0.00
Others	0.04	0.05	0.04	0.04	2.18	2.80	2.20	2.20	0.10	0.13	0.10	0.10	0.00	0.00	-0.03	-23.02

World and Selected Countries and Regions

Table 08 Sorghum Area, Yield, and Production

Country / Region	Area (Million hectares)				Yield (Metric tons per hectare)				Production (Million metric tons)				Change in Production			
	Prel.		2023/24 Proj.		Prel.		2023/24 Proj.		Prel.		2023/24 Proj.		From last month		From last year	
	2021/22	2022/23	Sep	Oct	2021/22	2022/23	Sep	Oct	2021/22	2022/23	Sep	Oct	MMT	Percent	MMT	Percent
World	40.53	39.83	41.84	41.64	1.50	1.38	1.49	1.47	61.00	54.87	62.35	61.02	-1.33	-2.13	6.15	11.21
United States	2.63	1.85	2.53	2.53	4.33	2.58	3.82	3.61	11.38	4.77	9.68	9.13	-0.55	-5.67	4.36	91.49
Total Foreign	37.90	37.98	39.31	39.11	1.31	1.32	1.34	1.33	49.62	50.10	52.67	51.89	-0.78	-1.48	1.79	3.57
Africa																
Nigeria	5.70	5.70	5.70	5.70	1.18	1.18	1.18	1.18	6.73	6.74	6.70	6.70	0.00	0.00	-0.04	-0.62
Ethiopia	1.65	1.66	1.66	1.66	2.70	2.53	2.65	2.65	4.45	4.20	4.40	4.40	0.00	0.00	0.20	4.76
Sudan	6.92	7.00	7.50	7.50	0.51	0.75	0.67	0.67	3.53	5.25	5.00	5.00	0.00	0.00	-0.25	-4.73
Burkina Faso	1.90	1.90	1.90	1.90	0.87	1.06	1.00	1.00	1.64	2.01	1.90	1.90	0.00	0.00	-0.11	-5.66
Mali	1.55	1.50	1.50	1.50	0.81	1.05	1.00	1.00	1.25	1.58	1.50	1.50	0.00	0.00	-0.08	-5.18
Niger	3.52	3.70	3.70	3.70	0.34	0.32	0.51	0.51	1.21	1.20	1.90	1.90	0.00	0.00	0.70	58.33
Cameroon	0.74	0.74	0.74	0.74	1.62	1.62	1.62	1.62	1.20	1.20	1.20	1.20	0.00	0.00	0.00	0.00
Tanzania	1.04	1.00	1.00	1.00	1.04	1.00	1.00	1.00	1.08	1.00	1.00	1.00	0.00	0.00	0.00	0.00
Egypt	0.16	0.15	0.15	0.15	4.90	5.00	5.00	5.00	0.77	0.75	0.75	0.75	0.00	0.00	0.00	0.00
Uganda	0.25	0.25	0.25	0.25	1.32	0.90	0.90	0.90	0.33	0.23	0.23	0.23	0.00	0.00	0.00	0.00
Ghana	0.31	0.31	0.31	0.31	1.05	1.49	1.13	1.13	0.32	0.46	0.35	0.35	0.00	0.00	-0.11	-24.41
Mozambique	0.25	0.15	0.25	0.25	0.64	1.04	0.64	0.64	0.16	0.15	0.16	0.16	0.00	0.00	0.01	4.58
South Africa	0.04	0.04	0.04	0.04	2.78	2.86	3.75	3.75	0.10	0.10	0.15	0.15	0.00	0.00	0.05	50.00
Mexico	1.40	1.40	1.42	1.42	3.47	3.50	3.38	3.38	4.84	4.89	4.80	4.80	0.00	0.00	-0.09	-1.88
South America																
Argentina	0.70	0.50	0.80	0.60	4.12	3.22	4.13	4.17	2.88	1.61	3.30	2.50	-0.80	-24.24	0.89	55.28
Brazil	0.95	1.07	1.23	1.23	3.20	2.72	2.93	2.93	3.04	2.92	3.60	3.60	0.00	0.00	0.68	23.29
South Asia																
India	3.80	3.75	4.10	4.10	1.09	1.07	1.07	1.07	4.15	4.00	4.40	4.40	0.00	0.00	0.40	10.00
Pakistan	0.08	0.22	0.22	0.22	0.83	0.63	0.63	0.63	0.06	0.14	0.14	0.14	0.00	0.00	0.00	0.00
China	0.63	0.63	0.63	0.63	4.76	4.76	4.76	4.76	3.00	3.00	3.00	3.00	0.00	0.00	0.00	0.00
Australia	0.62	0.67	0.60	0.60	4.26	3.65	3.00	3.00	2.65	2.46	1.80	1.80	0.00	0.00	-0.66	-26.68
European Union	0.15	0.13	0.13	0.13	5.44	4.32	5.00	5.15	0.80	0.55	0.65	0.67	0.02	3.08	0.12	22.04
Others	5.57	5.52	5.48	5.48	0.98	1.03	1.05	1.05	5.44	5.66	5.75	5.75	0.00	0.00	0.09	1.50

World and Selected Countries and Regions

Table 09 Rice Area, Yield, and Production
World and Selected Countries and Regions

Country / Region	Area (Million hectares)				Yield (Metric tons per hectare)				Production (Million metric tons)				Change in Production			
	Prel.		2023/24 Proj.		Prel.		2023/24 Proj.		Prel.		2023/24 Proj.		From last month		From last year	
	2021/22	2022/23	Sep	Oct	2021/22	2022/23	Sep	Oct	2021/22	2022/23	Sep	Oct	MMT	Percent	MMT	Percent
World	165.58	165.55	166.00	165.99	4.64	4.63	4.66	4.66	514.35	513.68	518.08	518.14	0.05	0.01	4.45	0.87
United States	1.01	0.88	1.15	1.15	8.64	8.28	8.69	8.67	6.08	5.09	7.01	7.00	-0.01	-0.19	1.91	37.49
Total Foreign	164.58	164.67	164.84	164.83	4.61	4.62	4.63	4.63	508.26	508.59	511.07	511.14	0.07	0.01	2.54	0.50
East Asia																
China	29.92	29.45	29.85	29.85	7.11	7.08	7.13	7.13	148.99	145.95	149.00	149.00	0.00	0.00	3.05	2.09
Japan	1.52	1.50	1.48	1.47	6.90	6.86	6.91	6.82	7.64	7.48	7.45	7.30	-0.15	-2.01	-0.18	-2.41
Korea, South	0.73	0.73	0.71	0.71	7.12	6.88	6.77	6.77	3.88	3.76	3.61	3.61	0.00	0.00	-0.15	-4.09
Korea, North	0.50	0.50	0.50	0.54	4.18	4.18	4.18	4.18	1.36	1.36	1.36	1.47	0.11	8.09	0.11	8.09
South Asia																
India	46.28	47.70	47.00	47.00	4.20	4.28	4.21	4.21	129.47	136.00	132.00	132.00	0.00	0.00	-4.00	-2.94
Bangladesh	11.62	11.60	11.65	11.65	4.63	4.70	4.69	4.69	35.85	36.35	36.40	36.40	0.00	0.00	0.05	0.14
Pakistan	3.54	3.00	3.50	3.50	3.95	2.75	3.86	3.86	9.32	5.50	9.00	9.00	0.00	0.00	3.50	63.64
Nepal	1.48	1.45	1.45	1.45	3.47	3.79	3.79	3.79	3.42	3.65	3.65	3.65	0.00	0.00	0.00	0.00
Sri Lanka	1.13	1.09	1.10	1.10	3.56	3.76	4.09	4.09	2.73	2.78	3.06	3.06	0.00	0.00	0.28	9.95
Southeast Asia																
Indonesia	11.60	11.55	11.60	11.60	4.67	4.64	4.68	4.68	34.40	34.00	34.45	34.45	0.00	0.00	0.45	1.32
Vietnam	7.10	7.16	7.16	7.16	6.01	6.03	6.03	6.03	26.67	27.00	27.00	27.00	0.00	0.00	0.00	0.00
Thailand	10.70	11.07	10.60	10.60	2.81	2.86	2.79	2.79	19.88	20.91	19.50	19.50	0.00	0.00	-1.41	-6.74
Burma	7.00	6.80	6.90	6.90	2.77	2.71	2.72	2.72	12.40	11.80	12.00	12.00	0.00	0.00	0.20	1.69
Philippines	4.80	4.85	4.80	4.80	4.15	4.13	4.17	4.17	12.54	12.63	12.60	12.60	0.00	0.00	-0.03	-0.20
Cambodia	3.27	3.31	3.37	3.37	2.89	2.94	2.92	2.92	5.77	5.93	6.00	6.00	0.00	0.00	0.07	1.13
Laos	0.94	0.95	0.95	0.95	3.28	3.26	3.21	3.21	1.95	1.95	1.92	1.92	0.00	0.00	-0.03	-1.54
Malaysia	0.65	0.66	0.66	0.66	3.97	3.99	4.08	4.08	1.68	1.70	1.75	1.75	0.00	0.00	0.05	2.94
South America																
Brazil	1.62	1.47	1.40	1.40	6.67	7.01	7.14	7.14	7.34	7.00	6.80	6.80	0.00	0.00	-0.20	-2.91
Peru	0.42	0.42	0.43	0.43	8.37	8.55	8.52	8.52	2.43	2.48	2.50	2.50	0.00	0.00	0.02	0.64
Africa																
Egypt	0.50	0.60	0.63	0.63	8.41	8.70	8.70	8.70	2.90	3.60	3.78	3.78	0.00	0.00	0.18	5.00
Madagascar	1.60	1.60	1.60	1.60	2.74	2.75	2.75	2.75	2.81	2.82	2.82	2.82	0.00	0.00	0.00	0.00
Nigeria	3.65	3.50	3.50	3.50	2.29	2.43	2.37	2.37	5.26	5.36	5.23	5.23	0.00	0.00	-0.13	-2.35
European Union	0.40	0.33	0.34	0.34	6.64	6.32	6.56	6.56	1.73	1.34	1.43	1.43	0.00	0.00	0.09	6.89
Iran	0.56	0.57	0.57	0.57	5.14	5.32	5.30	5.30	1.90	2.00	2.00	2.00	0.00	0.00	-0.01	-0.25
Others	13.04	12.82	13.10	13.06	3.02	2.99	2.98	3.00	25.95	25.24	25.77	25.87	0.11	0.41	0.63	2.50

Yield is on a rough basis, before the milling process. Production is on a milled basis, after the milling process.

Table 10 Total Oilseed Area, Yield, and Production

World and Selected Countries and Regions

Country / Region	Area (Million hectares)				Yield (Metric tons per hectare)				Production (Million metric tons)				Change in Production			
	2021/22	Prel.	2023/24 Proj.		2021/22	Prel.	2023/24 Proj.		2021/22	Prel.	2023/24 Proj.		From last month		From last year	
		2022/23	Sep	Oct		2022/23	Sep	Oct		2022/23	Sep	Oct	MMT	Percent	MMT	Percent
World Total	--	--	--	--	--	--	--	--	611.72	629.19	660.89	659.36	-1.52	-0.23	30.18	4.80
Total Foreign	--	--	--	--	--	--	--	--	480.37	503.44	538.68	538.46	-0.22	-0.04	35.03	6.96
Oilseed, Copra	--	--	--	--	--	--	--	--	6.07	6.03	6.05	6.05	0.00	0.00	0.02	0.36
Oilseed, Palm Kernel	--	--	--	--	--	--	--	--	19.14	19.87	20.51	20.51	0.00	0.00	0.64	3.20
Major Oilseeds	260.95	266.25	270.21	270.91	2.25	2.27	2.35	2.34	586.52	603.29	634.33	632.81	-1.52	-0.24	29.52	4.89
United States	41.06	39.92	38.83	38.85	3.20	3.15	3.15	3.11	131.35	125.75	122.21	120.90	-1.31	-1.07	-4.85	-3.86
Foreign Oilseeds	219.88	226.33	231.38	232.07	2.07	2.11	2.21	2.21	455.17	477.54	512.12	511.91	-0.22	-0.04	34.37	7.20
South America	68.65	70.42	73.51	73.94	2.87	2.93	3.26	3.25	196.74	206.62	239.35	240.45	1.10	0.46	33.83	16.37
Brazil	43.23	45.76	47.55	47.54	3.12	3.51	3.54	3.55	135.03	160.85	168.54	168.79	0.25	0.15	7.94	4.94
Argentina	18.77	17.76	19.11	19.55	2.66	1.78	2.81	2.79	49.85	31.57	53.68	54.53	0.85	1.58	22.96	72.74
Paraguay	3.51	3.71	3.65	3.65	1.23	2.48	2.78	2.78	4.31	9.22	10.14	10.14	0.00	0.00	0.93	10.04
Bolivia	1.68	1.61	1.63	1.63	2.18	2.10	2.13	2.13	3.67	3.37	3.48	3.48	0.00	0.00	0.11	3.27
Uruguay	1.32	1.45	1.42	1.42	2.68	0.88	2.21	2.21	3.53	1.28	3.15	3.15	0.00	0.00	1.87	146.75
China	24.02	26.06	26.32	26.32	2.58	2.61	2.56	2.56	62.07	68.04	67.33	67.33	0.00	0.00	-0.71	-1.04
South Asia	41.74	43.54	44.72	44.57	1.11	1.04	1.03	1.01	46.52	45.22	46.06	44.82	-1.24	-2.69	-0.40	-0.88
India	38.48	40.13	40.55	40.40	1.10	1.03	1.01	0.99	42.19	41.26	41.10	39.86	-1.24	-3.02	-1.40	-3.39
Pakistan	2.53	2.49	3.26	3.26	1.31	1.08	1.14	1.14	3.31	2.69	3.72	3.72	0.00	0.00	1.02	37.97
European Union	11.09	12.34	12.50	12.59	2.80	2.58	2.71	2.71	31.08	31.88	33.80	34.06	0.26	0.77	2.19	6.85
United Kingdom	0.31	0.36	0.41	0.41	3.20	3.74	3.16	3.16	0.98	1.36	1.30	1.30	0.00	0.00	-0.07	-4.85
Former Soviet Union - 12	27.82	27.66	28.69	28.69	1.89	1.87	1.94	1.93	52.66	51.85	55.57	55.44	-0.13	-0.23	3.59	6.93
Russia	14.23	14.74	14.95	14.95	1.62	1.80	1.81	1.81	23.11	26.55	27.00	27.00	0.00	0.00	0.45	1.69
Ukraine	9.58	8.75	9.50	9.50	2.54	2.26	2.43	2.43	24.32	19.80	23.10	23.10	0.00	0.00	3.30	16.67
Uzbekistan	1.08	1.09	1.05	1.05	1.10	1.24	1.13	1.13	1.19	1.35	1.19	1.19	0.00	0.00	-0.16	-11.82
Canada	11.06	10.75	11.08	11.08	1.86	2.36	2.25	2.22	20.55	25.32	24.98	24.58	-0.40	-1.60	-0.75	-2.95
Africa	25.07	24.25	24.01	24.38	0.98	1.05	1.07	1.07	24.67	25.39	25.69	26.02	0.33	1.30	0.64	2.50
Nigeria	4.97	4.87	4.87	4.87	1.11	1.15	1.15	1.15	5.50	5.61	5.60	5.60	0.00	0.00	-0.01	-0.25
South Africa	1.76	1.88	1.98	1.98	1.92	2.02	2.03	2.03	3.37	3.80	4.02	4.02	0.00	0.00	0.22	5.68
Tanzania	1.34	1.36	1.35	1.47	0.90	0.91	0.93	0.87	1.21	1.23	1.25	1.28	0.02	1.84	0.04	3.49
Southeast Asia	3.12	3.08	3.05	3.05	1.36	1.36	1.39	1.39	4.23	4.18	4.23	4.23	0.00	0.00	0.05	1.12
Burma	1.95	1.94	1.95	1.95	1.16	1.18	1.24	1.24	2.25	2.28	2.41	2.41	0.00	0.00	0.13	5.47
Indonesia	0.90	0.87	0.84	0.84	1.55	1.52	1.49	1.49	1.39	1.32	1.26	1.26	0.00	0.00	-0.07	-4.92
Australia	3.94	4.61	4.07	4.02	2.20	2.19	1.67	1.67	8.68	10.11	6.82	6.73	-0.09	-1.32	-3.39	-33.48
Turkey	1.32	1.48	1.26	1.26	2.55	2.69	2.53	2.49	3.37	3.98	3.19	3.14	-0.05	-1.57	-0.84	-21.16
Others	1.75	1.78	1.77	1.77	2.06	2.02	2.16	2.16	3.62	3.59	3.82	3.82	0.00	0.00	0.23	6.35

World Total and Total Foreign: (Major Oilseeds plus copra and palm kernel) Major Oilseeds: (soybeans, sunflowerseeds, peanuts(inshell), cottonseed and rapeseed)

Table 11 Soybean Area, Yield, and Production

Country / Region	Area (Million hectares)				Yield (Metric tons per hectare)				Production (Million metric tons)				Change in Production			
	Prel.		2023/24 Proj.		Prel.		2023/24 Proj.		Prel.		2023/24 Proj.		From last month		From last year	
	2021/22	2022/23	Sep	Oct	2021/22	2022/23	Sep	Oct	2021/22	2022/23	Sep	Oct	MMT	Percent	MMT	Percent
World	131.45	136.11	138.98	139.23	2.74	2.72	2.89	2.87	360.43	370.24	401.33	399.50	-1.82	-0.45	29.26	7.90
United States	34.93	34.87	33.50	33.50	3.48	3.33	3.37	3.33	121.53	116.22	112.84	111.70	-1.13	-1.00	-4.51	-3.88
Total Foreign	96.52	101.24	105.48	105.73	2.48	2.51	2.74	2.72	238.91	254.03	288.49	287.80	-0.69	-0.24	33.77	13.29
South America																
Brazil	41.60	43.90	45.60	45.60	3.14	3.55	3.57	3.57	130.50	156.00	163.00	163.00	0.00	0.00	7.00	4.49
Argentina	15.90	14.40	16.40	16.40	2.76	1.74	2.93	2.93	43.90	25.00	48.00	48.00	0.00	0.00	23.00	92.00
Paraguay	3.42	3.60	3.55	3.55	1.22	2.51	2.82	2.82	4.18	9.05	10.00	10.00	0.00	0.00	0.95	10.50
Bolivia	1.53	1.48	1.50	1.50	2.27	2.17	2.20	2.20	3.46	3.20	3.30	3.30	0.00	0.00	0.10	3.13
Uruguay	1.16	1.10	1.28	1.28	2.80	0.64	2.27	2.27	3.23	0.70	2.90	2.90	0.00	0.00	2.20	314.29
East Asia																
China	8.42	10.24	10.45	10.45	1.95	1.98	1.96	1.96	16.40	20.28	20.50	20.50	0.00	0.00	0.22	1.08
Korea, South	0.05	0.06	0.07	0.07	2.06	2.03	1.93	1.93	0.11	0.13	0.13	0.13	0.00	0.00	0.00	0.77
Korea, North	0.17	0.16	0.16	0.16	1.15	1.15	1.15	1.15	0.19	0.18	0.18	0.18	0.00	0.00	0.00	0.00
Japan	0.15	0.15	0.16	0.16	1.63	1.58	1.63	1.63	0.24	0.24	0.25	0.25	0.00	0.00	0.02	6.30
India	12.15	13.00	13.00	13.00	0.98	0.95	0.92	0.85	11.89	12.41	12.00	11.00	-1.00	-8.33	-1.41	-11.37
Canada	2.08	2.12	2.25	2.25	2.99	3.09	2.98	2.98	6.22	6.54	6.70	6.70	0.00	0.00	0.16	2.40
Former Soviet Union - 12																
Russia	2.99	3.36	3.45	3.45	1.59	1.79	1.74	1.74	4.76	6.00	6.00	6.00	0.00	0.00	0.00	0.07
Ukraine	1.44	1.82	2.00	2.00	2.64	2.25	2.40	2.40	3.80	4.10	4.80	4.80	0.00	0.00	0.70	17.07
European Union	1.01	1.13	1.10	1.10	2.82	2.26	2.79	2.79	2.83	2.55	3.05	3.05	0.00	0.00	0.50	19.42
Southeast Asia																
Indonesia	0.35	0.33	0.32	0.32	1.21	1.18	1.17	1.17	0.43	0.39	0.38	0.38	0.00	0.00	-0.02	-3.85
Vietnam	0.03	0.03	0.03	0.03	1.61	1.60	1.61	1.61	0.05	0.05	0.05	0.05	0.00	0.00	0.00	-6.25
Thailand	0.03	0.03	0.03	0.03	1.63	1.63	1.63	1.63	0.05	0.05	0.05	0.05	0.00	0.00	0.00	0.00
Burma	0.13	0.13	0.12	0.12	1.04	1.04	1.04	1.04	0.14	0.13	0.13	0.13	0.00	0.00	-0.01	-3.85
Serbia	0.24	0.24	0.24	0.24	2.28	1.70	2.77	2.77	0.54	0.40	0.65	0.65	0.00	0.00	0.25	62.91
Mexico	0.18	0.12	0.15	0.15	1.57	1.52	1.57	1.57	0.29	0.18	0.24	0.24	0.00	0.00	0.06	34.29
Africa																
South Africa	0.93	1.15	1.20	1.20	2.41	2.40	2.33	2.33	2.23	2.76	2.80	2.80	0.00	0.00	0.05	1.63
Nigeria	1.20	1.20	1.15	1.15	0.93	0.98	1.00	1.00	1.12	1.18	1.15	1.15	0.00	0.00	-0.03	-2.54
Zambia	0.30	0.38	0.38	0.38	1.35	1.27	1.27	1.27	0.41	0.48	0.48	0.48	0.00	0.00	0.00	0.00
Uganda	0.17	0.17	0.17	0.17	1.20	1.18	1.18	1.18	0.20	0.20	0.20	0.20	0.00	0.00	0.00	0.00
Middle East																
Iran	0.07	0.08	0.07	0.07	2.29	2.27	2.36	2.36	0.16	0.17	0.17	0.17	0.00	0.00	-0.01	-2.94
Turkey	0.03	0.04	0.03	0.03	3.91	4.14	4.12	4.12	0.13	0.15	0.14	0.14	0.00	0.00	-0.01	-3.45
Others	0.82	0.86	0.64	0.89	1.78	1.77	1.97	1.76	1.46	1.53	1.26	1.57	0.31	24.56	0.05	3.01

World and Selected Countries and Regions

Table 12 Cottonseed Area, Yield, and Production

Country / Region	Area (Million hectares)				Yield (Metric tons per hectare)				Production (Million metric tons)				Change in Production			
	Prel.		2023/24 Proj.		Prel.		2023/24 Proj.		Prel.		2023/24 Proj.		From last month		From last year	
	2021/22	2022/23	Sep	Oct	2021/22	2022/23	Sep	Oct	2021/22	2022/23	Sep	Oct	MMT	Percent	MMT	Percent
World	31.80	31.28	31.19	31.38	1.31	1.36	1.32	1.32	41.55	42.54	41.22	41.32	0.10	0.25	-1.22	-2.86
United States	4.16	2.96	3.25	3.25	1.16	1.35	1.12	1.09	4.83	4.01	3.63	3.54	-0.09	-2.53	-0.47	-11.66
Total Foreign	27.65	28.33	27.95	28.13	1.33	1.36	1.35	1.34	36.72	38.53	37.59	37.79	0.20	0.52	-0.75	-1.94
South Asia																
India	12.37	13.00	12.60	12.70	0.84	0.85	0.84	0.84	10.36	11.04	10.61	10.61	0.00	0.00	-0.42	-3.84
Pakistan	2.00	1.80	2.60	2.60	1.30	0.94	1.08	1.08	2.60	1.69	2.82	2.82	0.00	0.00	1.13	66.73
China	3.10	3.15	2.90	2.90	3.39	3.82	3.65	3.65	10.50	12.03	10.58	10.58	0.00	0.00	-1.45	-12.05
Former Soviet Union - 12																
Uzbekistan	1.06	1.07	1.03	1.03	1.06	1.21	1.10	1.10	1.12	1.29	1.14	1.14	0.00	0.00	-0.16	-12.14
Turkmenistan	0.55	0.55	0.55	0.55	0.64	0.64	0.64	0.64	0.35	0.35	0.35	0.35	0.00	0.00	0.00	0.00
Tajikistan	0.17	0.17	0.17	0.17	1.09	1.11	1.15	1.15	0.19	0.19	0.20	0.20	0.00	0.00	0.01	3.72
Kazakhstan	0.11	0.13	0.12	0.12	0.84	1.05	0.88	0.88	0.09	0.13	0.11	0.11	0.00	0.00	-0.03	-19.85
South America																
Brazil	1.37	1.60	1.67	1.66	2.62	2.43	2.74	2.91	3.59	3.89	4.58	4.83	0.25	5.50	0.94	24.24
Argentina	0.48	0.51	0.41	0.45	1.06	1.06	1.03	1.05	0.51	0.55	0.42	0.47	0.05	11.61	-0.07	-13.58
Middle East																
Turkey	0.45	0.56	0.44	0.44	2.76	2.88	2.60	2.60	1.24	1.60	1.14	1.14	0.00	0.00	-0.46	-28.56
Syria	0.03	0.03	0.03	0.03	2.20	2.20	2.20	2.20	0.06	0.06	0.06	0.06	0.00	0.00	0.00	0.00
Iran	0.10	0.10	0.10	0.10	1.35	1.35	1.18	1.18	0.14	0.14	0.12	0.12	0.00	0.00	-0.02	-12.59
Australia	0.64	0.65	0.52	0.47	2.77	2.68	3.15	3.29	1.76	1.74	1.62	1.53	-0.09	-5.55	-0.21	-12.06
European Union	0.32	0.31	0.26	0.25	1.66	1.70	1.54	1.45	0.53	0.53	0.40	0.36	-0.04	-9.73	-0.16	-31.05
Africa																
Burkina Faso	0.60	0.62	0.49	0.49	0.45	0.35	0.39	0.39	0.27	0.21	0.19	0.19	0.00	0.00	-0.02	-9.81
Mali	0.72	0.60	0.70	0.70	0.56	0.35	0.50	0.50	0.40	0.21	0.35	0.35	0.00	0.00	0.15	69.71
Cameroon	0.23	0.23	0.25	0.25	1.39	1.29	1.33	1.33	0.32	0.30	0.33	0.33	0.00	0.00	0.03	8.33
Cote d'Ivoire	0.47	0.41	0.39	0.39	0.60	0.29	0.52	0.52	0.28	0.12	0.20	0.20	0.00	0.00	0.08	70.59
Benin	0.64	0.57	0.53	0.53	0.73	0.64	0.73	0.73	0.47	0.36	0.39	0.39	0.00	0.00	0.02	6.59
Tanzania	0.34	0.36	0.35	0.47	0.33	0.37	0.43	0.38	0.11	0.13	0.15	0.18	0.02	15.13	0.04	32.58
Egypt	0.09	0.14	0.11	0.11	1.00	0.92	0.96	0.96	0.09	0.13	0.11	0.11	0.00	0.00	-0.02	-17.83
Nigeria	0.27	0.27	0.27	0.27	0.56	0.56	0.56	0.56	0.15	0.15	0.15	0.15	0.00	0.00	0.00	0.00
Uganda	0.10	0.10	0.10	0.10	1.49	1.49	1.49	1.49	0.15	0.15	0.15	0.15	0.00	0.00	0.00	0.00
Zimbabwe	0.25	0.24	0.24	0.24	0.33	0.34	0.34	0.34	0.08	0.08	0.08	0.08	0.00	0.00	0.00	0.00
Sudan	0.20	0.20	0.20	0.20	1.53	1.53	1.53	1.53	0.31	0.31	0.31	0.31	0.00	0.00	0.00	0.00
Mexico	0.15	0.20	0.15	0.15	2.71	2.70	2.51	2.51	0.42	0.54	0.38	0.38	0.00	0.00	-0.16	-30.37
Burma	0.16	0.15	0.16	0.16	0.81	0.76	1.25	1.25	0.13	0.11	0.19	0.19	0.00	0.00	0.08	70.18
Others	0.70	0.62	0.63	0.63	0.74	0.82	0.75	0.75	0.52	0.51	0.47	0.47	0.00	0.00	-0.04	-7.83

World and Selected Countries and Regions

Table 13 Peanut Area, Yield, and Production

Country / Region	Area (Million hectares)				Yield (Metric tons per hectare)				Production (Million metric tons)				Change in Production			
	Prel.		2023/24 Proj.		Prel.		2023/24 Proj.		Prel.		2023/24 Proj.		From last month		From last year	
	2021/22	2022/23	Sep	Oct	2021/22	2022/23	Sep	Oct	2021/22	2022/23	Sep	Oct	MMT	Percent	MMT	Percent
World	30.69	29.05	29.69	29.49	1.69	1.70	1.71	1.71	51.89	49.33	50.76	50.52	-0.23	-0.46	1.20	2.42
United States	0.62	0.56	0.65	0.65	4.63	4.49	4.43	4.38	2.89	2.51	2.87	2.83	-0.03	-1.19	0.32	12.73
Total Foreign	30.06	28.49	29.04	28.84	1.63	1.64	1.65	1.65	49.01	46.81	47.89	47.69	-0.20	-0.42	0.88	1.87
China	4.81	4.80	4.82	4.82	3.81	3.81	3.86	3.86	18.31	18.30	18.60	18.60	0.00	0.00	0.30	1.64
Africa																
Nigeria	3.50	3.40	3.45	3.45	1.21	1.26	1.25	1.25	4.23	4.28	4.30	4.30	0.00	0.00	0.02	0.37
Sudan	3.94	3.00	3.00	3.00	0.60	0.83	0.83	0.83	2.36	2.50	2.50	2.50	0.00	0.00	0.00	0.00
Senegal	1.21	1.23	1.23	1.23	1.38	1.23	1.40	1.40	1.68	1.50	1.72	1.72	0.00	0.00	0.21	14.18
Cameroon	0.43	0.43	0.43	0.43	1.40	1.40	1.40	1.40	0.60	0.60	0.60	0.60	0.00	0.00	0.00	0.00
Ghana	0.34	0.37	0.37	0.37	1.48	1.65	1.62	1.62	0.50	0.61	0.60	0.60	0.00	0.00	-0.01	-1.80
Chad	0.75	0.76	0.76	0.76	1.06	1.10	1.09	1.09	0.80	0.83	0.83	0.83	0.00	0.00	0.00	0.12
Malawi	0.40	0.40	0.40	0.40	0.88	0.88	0.88	0.88	0.35	0.35	0.35	0.35	0.00	0.00	0.00	0.00
Congo (Kinshasa)	0.52	0.53	0.53	0.53	0.92	0.91	0.91	0.91	0.48	0.48	0.48	0.48	0.00	0.00	0.00	0.00
Niger	0.92	0.97	0.92	0.92	0.56	0.69	0.65	0.65	0.52	0.67	0.60	0.60	0.00	0.00	-0.07	-10.58
Mali	0.44	0.43	0.43	0.43	0.78	1.04	1.00	1.00	0.35	0.44	0.43	0.43	0.00	0.00	-0.02	-4.06
Uganda	0.39	0.35	0.35	0.35	0.65	0.57	0.57	0.57	0.25	0.20	0.20	0.20	0.00	0.00	0.00	0.00
Burkina Faso	0.58	0.63	0.64	0.64	0.83	0.89	0.90	0.90	0.48	0.56	0.58	0.58	0.00	0.00	0.02	2.86
Guinea	0.79	0.90	0.90	0.90	1.15	1.14	1.11	1.11	0.91	1.03	1.00	1.00	0.00	0.00	-0.03	-2.44
Egypt	0.06	0.06	0.06	0.06	3.42	3.20	3.20	3.20	0.21	0.21	0.21	0.21	0.00	0.00	0.00	0.00
Central African Republic	0.13	0.13	0.13	0.13	1.15	1.15	1.15	1.15	0.15	0.15	0.15	0.15	0.00	0.00	0.00	0.00
South Africa	0.04	0.03	0.04	0.04	1.51	2.23	2.00	2.00	0.07	0.07	0.07	0.07	0.00	0.00	0.00	1.45
Mozambique	0.38	0.38	0.38	0.38	0.34	0.34	0.34	0.34	0.13	0.13	0.13	0.13	0.00	0.00	0.00	0.00
Cote d'Ivoire	0.17	0.17	0.17	0.17	1.42	1.47	1.45	1.45	0.23	0.24	0.24	0.24	0.00	0.00	0.00	-1.23
Benin	0.17	0.17	0.18	0.18	1.05	0.96	0.97	0.97	0.18	0.16	0.18	0.18	0.00	0.00	0.01	6.71
South Asia																
India	5.71	5.00	5.50	5.30	1.52	1.26	1.20	1.21	8.70	6.30	6.60	6.40	-0.20	-3.03	0.10	1.59
Pakistan	0.15	0.13	0.13	0.13	0.94	0.88	0.88	0.88	0.15	0.12	0.12	0.12	0.00	0.00	0.00	0.00
Southeast Asia																
Indonesia	0.55	0.54	0.52	0.52	1.76	1.72	1.69	1.69	0.96	0.93	0.88	0.88	0.00	0.00	-0.05	-5.38
Burma	1.06	1.07	1.07	1.07	1.51	1.55	1.59	1.59	1.60	1.65	1.70	1.70	0.00	0.00	0.05	3.03
Vietnam	0.16	0.16	0.15	0.15	2.58	2.58	2.60	2.60	0.41	0.40	0.39	0.39	0.00	0.00	-0.01	-2.50
Thailand	0.02	0.02	0.02	0.02	1.67	1.67	1.67	1.67	0.04	0.04	0.04	0.04	0.00	0.00	0.00	0.00
South America																
Argentina	0.41	0.37	0.38	0.38	3.29	2.59	3.47	3.47	1.34	0.96	1.32	1.32	0.00	0.00	0.36	37.07
Brazil	0.22	0.22	0.24	0.24	4.09	4.05	3.79	3.79	0.90	0.89	0.89	0.89	0.00	0.00	0.00	0.00
Mexico	0.06	0.05	0.05	0.05	1.63	1.87	1.74	1.74	0.10	0.10	0.09	0.09	0.00	0.00	-0.01	-8.91
Others	1.77	1.80	1.80	1.80	1.16	1.17	1.17	1.17	2.06	2.11	2.12	2.12	0.00	0.00	0.01	0.33

Table 14 Sunflowerseed Area, Yield, and Production

Country / Region	Area (Million hectares)				Yield (Metric tons per hectare)				Production (Million metric tons)				Change in Production			
	2021/22	Prel.		2023/24 Proj.		2021/22	Prel.		2023/24 Proj.		2021/22	Prel.		2023/24 Proj.		
		2022/23	Sep	Oct	2022/23		Sep	Oct	2022/23	Sep		Oct	MMT	Percent	MMT	Percent
World	28.55	27.97	28.09	28.43	1.99	1.87	1.99	1.98	56.86	52.42	55.85	56.42	0.58	1.03	4.00	7.63
United States	0.50	0.65	0.52	0.51	1.71	1.96	1.98	1.95	0.86	1.28	1.03	1.00	-0.04	-3.40	-0.28	-21.96
Total Foreign	28.04	27.32	27.57	27.92	2.00	1.87	1.99	1.99	55.99	51.15	54.82	55.43	0.61	1.11	4.28	8.37
Former Soviet Union - 12																
Russia	9.61	9.11	9.50	9.50	1.62	1.78	1.84	1.84	15.57	16.25	17.50	17.50	0.00	0.00	1.25	7.67
Ukraine	7.10	5.70	6.00	6.00	2.46	2.14	2.33	2.33	17.50	12.20	14.00	14.00	0.00	0.00	1.80	14.75
Kazakhstan	0.94	1.09	1.15	1.15	1.10	1.20	1.13	1.04	1.03	1.30	1.30	1.20	-0.10	-7.69	-0.10	-7.98
European Union	4.37	4.97	4.96	4.96	2.36	1.85	2.15	2.15	10.33	9.21	10.65	10.65	0.00	0.00	1.44	15.67
South America																
Argentina	1.96	2.45	1.90	2.30	2.07	2.05	2.05	2.04	4.05	5.02	3.90	4.70	0.80	20.51	-0.32	-6.36
Uruguay	0.01	0.01	0.01	0.01	2.00	0.91	0.92	0.92	0.01	0.01	0.01	0.01	0.00	0.00	0.00	10.00
Bolivia	0.16	0.13	0.13	0.13	1.32	1.27	1.35	1.35	0.21	0.17	0.18	0.18	0.00	0.00	0.01	6.06
Brazil	0.04	0.04	0.04	0.04	1.03	1.56	1.55	1.55	0.04	0.06	0.07	0.07	0.00	0.00	0.00	1.56
Paraguay	0.03	0.03	0.03	0.03	1.55	1.56	1.50	1.50	0.05	0.05	0.05	0.05	0.00	0.00	-0.01	-10.00
China	0.70	0.60	0.80	0.80	3.06	3.17	2.81	2.81	2.15	1.90	2.25	2.25	0.00	0.00	0.35	18.42
South Asia																
India	0.27	0.33	0.25	0.20	0.52	0.66	0.76	0.75	0.14	0.22	0.19	0.15	-0.04	-21.05	-0.07	-30.23
Pakistan	0.05	0.11	0.10	0.10	1.58	1.35	1.35	1.35	0.08	0.15	0.14	0.14	0.00	0.00	-0.01	-8.78
Middle East																
Turkey	0.76	0.79	0.70	0.70	2.30	2.41	2.29	2.21	1.75	1.90	1.60	1.55	-0.05	-3.13	-0.35	-18.42
Iran	0.04	0.04	0.04	0.04	1.00	1.02	1.05	1.05	0.04	0.04	0.04	0.04	0.00	0.00	0.00	-2.27
Israel	0.00	0.00	0.00	0.00	2.00	5.00	4.00	4.00	0.00	0.01	0.00	0.00	0.00	0.00	0.00	-20.00
Africa																
Egypt	0.01	0.02	0.02	0.02	2.38	2.53	2.50	2.50	0.02	0.04	0.05	0.05	0.00	0.00	0.01	31.58
Morocco	0.02	0.02	0.02	0.02	1.25	1.11	1.27	1.27	0.03	0.02	0.03	0.03	0.00	0.00	0.01	40.00
South Africa	0.67	0.56	0.60	0.60	1.26	1.31	1.46	1.46	0.85	0.73	0.88	0.88	0.00	0.00	0.15	19.86
Burma	0.60	0.60	0.60	0.60	0.65	0.65	0.65	0.65	0.39	0.39	0.39	0.39	0.00	0.00	0.00	0.00
Canada	0.04	0.04	0.03	0.03	2.03	2.21	2.21	2.21	0.08	0.08	0.08	0.08	0.00	0.00	-0.01	-10.71
Australia	0.02	0.03	0.03	0.03	1.58	1.48	1.48	1.48	0.03	0.04	0.04	0.04	0.00	0.00	0.00	0.00
Others	0.63	0.66	0.66	0.66	2.59	2.07	2.28	2.28	1.64	1.37	1.50	1.50	0.00	0.00	0.13	9.52

World and Selected Countries and Regions

Table 15 Rapeseed Area, Yield, and Production

Country / Region	Area (Million hectares)				Yield (Metric tons per hectare)				Production (Million metric tons)				Change in Production			
	2021/22	Prel.	2023/24 Proj.		2021/22	Prel.	2023/24 Proj.		2021/22	Prel.	2023/24 Proj.		From last month		From last year	
		2022/23	Sep	Oct		2022/23	Sep	Oct		2022/23	Sep	Oct	MMT	Percent	MMT	Percent
World	38.46	41.84	42.26	42.39	1.97	2.12	2.02	2.01	75.79	88.76	85.18	85.04	-0.14	-0.17	-3.72	-4.19
United States	0.85	0.88	0.91	0.94	1.46	1.98	2.02	1.95	1.24	1.74	1.85	1.83	-0.01	-0.76	0.09	5.11
Total Foreign	37.61	40.96	41.35	41.45	1.98	2.12	2.02	2.01	74.54	87.02	83.34	83.21	-0.13	-0.16	-3.81	-4.38
European Union	5.39	5.93	6.18	6.28	3.22	3.30	3.19	3.18	17.39	19.59	19.70	20.00	0.30	1.52	0.41	2.09
United Kingdom	0.31	0.36	0.41	0.41	3.20	3.74	3.16	3.16	0.98	1.36	1.30	1.30	0.00	0.00	-0.07	-4.85
Switzerland	0.02	0.02	0.02	0.02	3.14	3.14	3.14	3.14	0.07	0.07	0.07	0.07	0.00	0.00	0.00	0.00
Canada	8.95	8.60	8.80	8.80	1.59	2.17	2.07	2.02	14.25	18.70	18.20	17.80	-0.40	-2.20	-0.90	-4.79
China	6.99	7.27	7.35	7.35	2.10	2.14	2.10	2.10	14.71	15.53	15.40	15.40	0.00	0.00	-0.13	-0.84
South Asia																
India	7.99	8.80	9.20	9.20	1.39	1.28	1.27	1.27	11.10	11.30	11.70	11.70	0.00	0.00	0.40	3.54
Pakistan	0.32	0.45	0.43	0.43	1.50	1.64	1.53	1.53	0.48	0.74	0.65	0.65	0.00	0.00	-0.09	-12.16
Bangladesh	0.61	0.81	0.80	0.80	1.35	1.30	1.29	1.29	0.82	1.05	1.03	1.03	0.00	0.00	-0.02	-1.90
Former Soviet Union - 12																
Russia	1.62	2.27	2.00	2.00	1.71	1.89	1.75	1.75	2.78	4.30	3.50	3.50	0.00	0.00	-0.80	-18.60
Ukraine	1.04	1.23	1.50	1.50	2.91	2.85	2.87	2.87	3.02	3.50	4.30	4.30	0.00	0.00	0.80	22.86
Belarus	0.39	0.36	0.40	0.40	1.83	2.22	2.25	2.25	0.72	0.80	0.90	0.90	0.00	0.00	0.10	12.50
Kazakhstan	0.12	0.13	0.13	0.13	1.24	1.48	1.38	1.15	0.15	0.19	0.18	0.15	-0.03	-16.67	-0.04	-20.63
Australia	3.25	3.90	3.50	3.50	2.10	2.12	1.46	1.46	6.82	8.27	5.10	5.10	0.00	0.00	-3.17	-38.35
South America																
Chile	0.04	0.03	0.04	0.04	3.86	3.79	3.82	3.82	0.14	0.13	0.15	0.15	0.00	0.00	0.02	16.00
Paraguay	0.04	0.05	0.04	0.04	1.45	1.51	1.50	1.50	0.06	0.07	0.06	0.06	0.00	0.00	-0.01	-7.35
Ethiopia	0.03	0.03	0.03	0.03	1.80	1.80	1.80	1.80	0.05	0.05	0.05	0.05	0.00	0.00	0.00	0.00
Others	0.51	0.73	0.53	0.53	2.02	1.89	2.02	2.01	1.03	1.38	1.06	1.06	0.00	0.00	-0.32	-23.12

World and Selected Countries and Regions

Table 16 Copra, Palm Kernel, and Palm Oil Production

Country / Region	Production (Million metric tons)				Change in Production			
	2021/22	Prel.	2023/24 Proj.		From last month		From last year	
		2022/23	Sep	Oct	MMT	Percent	MMT	Percent
Oilseed, Copra								
Philippines	2.60	2.60	2.70	2.70	0.00	0.00	0.10	3.85
Indonesia	1.68	1.68	1.69	1.69	0.00	0.00	0.01	0.60
India	0.94	0.94	0.94	0.94	0.00	0.00	0.00	0.00
Vietnam	0.29	0.29	0.29	0.29	0.00	0.00	0.00	0.00
Papua New Guinea	0.11	0.11	0.11	0.11	0.00	0.00	0.00	0.00
Thailand	0.09	0.09	0.09	0.09	0.00	0.00	0.00	0.00
Sri Lanka	0.11	0.07	0.07	0.07	0.00	0.00	0.00	0.00
Mexico	0.05	0.05	0.05	0.05	0.00	0.00	0.00	0.00
Solomon Islands	0.03	0.03			0.00	0.00	-0.03	0.00
Cote d'Ivoire	0.03	0.03	0.03	0.03	0.00	0.00	0.00	0.00
World	6.07	6.03	6.05	6.05	0.00	0.00	0.02	0.33
Oilseed, Palm Kernel								
Indonesia	11.20	11.80	12.00	12.00	0.00	0.00	0.20	1.69
Malaysia	4.45	4.49	4.70	4.70	0.00	0.00	0.21	4.68
Nigeria	0.90	0.90	1.10	1.10	0.00	0.00	0.20	22.22
Thailand	0.83	0.86	0.86	0.86	0.00	0.00	0.00	0.00
Colombia	0.32	0.33	0.35	0.35	0.00	0.00	0.02	6.06
Guatemala	0.18	0.18	0.18	0.18	0.00	0.00	0.00	0.00
Papua New Guinea	0.17	0.17	0.18	0.18	0.00	0.00	0.01	5.88
Honduras	0.16	0.16	0.16	0.16	0.00	0.00	0.00	0.00
Brazil	0.15	0.15	0.16	0.16	0.00	0.00	0.01	6.67
Cameroon	0.15	0.15	0.15	0.15	0.00	0.00	0.00	0.00
World	19.14	19.87	20.51	20.51	0.00	0.00	0.64	3.22
Oil, Palm								
Indonesia	42.00	46.00	47.00	47.00	0.00	0.00	1.00	2.17
Malaysia	18.15	18.40	19.00	19.00	0.00	0.00	0.60	3.26
Thailand	3.38	3.42	3.45	3.45	0.00	0.00	0.03	0.88
Colombia	1.76	1.80	1.90	1.90	0.00	0.00	0.10	5.56
Nigeria	1.40	1.40	1.50	1.50	0.00	0.00	0.10	7.14
Guatemala	0.88	0.91	0.92	0.92	0.00	0.00	0.01	1.10
Papua New Guinea	0.72	0.78	0.80	0.80	0.00	0.00	0.02	2.56
Cote d'Ivoire	0.58	0.60	0.60	0.60	0.00	0.00	0.00	0.00
Honduras	0.60	0.60	0.60	0.60	0.00	0.00	0.00	0.00
Brazil	0.55	0.57	0.59	0.59	0.00	0.00	0.01	1.75
World	72.96	77.58	79.46	79.46	0.00	0.00	1.88	2.42

World and Selected Countries and Regions

Table 17 Cotton Area, Yield, and Production

Country / Region	Area (Million hectares)				Yield (Kilograms per hectare)				Production (Million 480 lb. bales)				Change in Production			
	Prel.		2023/24 Proj.		Prel.		2023/24 Proj.		Prel.		2023/24 Proj.		From last month		From last year	
	2021/22	2022/23	Sep	Oct	2021/22	2022/23	Sep	Oct	2021/22	2022/23	Sep	Oct	MBales	Percent	MBales	Percent
World	32.33	31.81	31.78	31.94	772	796	770	768	114.65	116.27	112.39	112.60	0.21	0.19	-3.66	-3.15
United States	4.16	2.96	3.25	3.25	918	1,065	881	860	17.52	14.47	13.13	12.82	-0.32	-2.40	-1.65	-11.41
Total Foreign	28.17	28.85	28.54	28.70	751	768	757	757	97.13	101.80	99.26	99.79	0.53	0.53	-2.01	-1.98
South Asia																
India	12.37	13.00	12.60	12.70	429	435	432	429	24.40	26.00	25.00	25.00	0.00	0.00	-1.00	-3.85
Pakistan	2.00	1.80	2.60	2.60	653	472	544	544	6.00	3.90	6.50	6.50	0.00	0.00	2.60	66.67
China	3.10	3.15	2.90	2.90	1,882	2,122	2,027	2,027	26.80	30.70	27.00	27.00	0.00	0.00	-3.70	-12.05
South America																
Brazil	1.37	1.60	1.67	1.66	1,720	1,595	1,799	1,910	10.82	11.72	13.80	14.56	0.76	5.51	2.84	24.23
Argentina	0.48	0.51	0.41	0.45	624	627	611	617	1.38	1.48	1.15	1.28	0.13	10.87	-0.20	-13.56
Paraguay	0.02	0.04	0.03	0.03	527	877	806	806	0.05	0.14	0.10	0.10	0.00	0.00	-0.04	-29.08
Africa																
Burkina Faso	0.60	0.62	0.49	0.49	351	273	311	311	0.96	0.78	0.70	0.70	0.00	0.00	-0.08	-9.68
Mali	0.72	0.60	0.70	0.70	432	269	389	389	1.43	0.74	1.25	1.25	0.00	0.00	0.52	70.07
Cote d'Ivoire	0.47	0.41	0.39	0.39	486	236	424	424	1.05	0.45	0.76	0.76	0.00	0.00	0.32	70.79
Benin	0.64	0.57	0.53	0.53	483	418	483	483	1.42	1.10	1.18	1.18	0.00	0.00	0.08	6.82
Egypt	0.09	0.14	0.11	0.11	717	661	693	693	0.28	0.43	0.35	0.35	0.00	0.00	-0.08	-17.65
Cameroon	0.23	0.23	0.25	0.25	606	563	578	578	0.64	0.60	0.65	0.65	0.00	0.00	0.05	8.33
Tanzania	0.34	0.36	0.35	0.47	164	184	218	220	0.26	0.31	0.35	0.47	0.12	34.29	0.17	54.10
Nigeria	0.27	0.27	0.27	0.27	282	282	282	282	0.35	0.35	0.35	0.35	0.00	0.00	0.00	0.00
Zimbabwe	0.25	0.24	0.24	0.24	191	195	195	195	0.22	0.22	0.22	0.22	0.00	0.00	0.00	0.00
Ethiopia	0.05	0.05	0.08	0.06	687	726	637	713	0.16	0.18	0.24	0.18	-0.06	-25.00	0.00	0.00
Former Soviet Union - 12																
Uzbekistan	1.06	1.07	1.03	1.03	588	671	613	613	2.87	3.30	2.90	2.90	0.00	0.00	-0.40	-12.12
Turkmenistan	0.55	0.55	0.55	0.55	356	356	356	356	0.90	0.90	0.90	0.90	0.00	0.00	0.00	0.00
Tajikistan	0.17	0.17	0.17	0.17	608	615	640	640	0.48	0.48	0.50	0.50	0.00	0.00	0.02	4.17
Kazakhstan	0.11	0.13	0.12	0.12	467	584	490	490	0.24	0.34	0.27	0.27	0.00	0.00	-0.07	-19.40
Middle East																
Turkey	0.45	0.56	0.44	0.44	1,839	1,922	1,732	1,732	3.80	4.90	3.50	3.50	0.00	0.00	-1.40	-28.57
Syria	0.03	0.03	0.03	0.03	1,132	1,132	1,132	1,132	0.13	0.13	0.13	0.13	0.00	0.00	0.00	0.00
Iran	0.10	0.10	0.10	0.10	871	871	762	762	0.40	0.40	0.35	0.35	0.00	0.00	-0.05	-12.50
Australia	0.64	0.65	0.52	0.47	2,006	1,943	2,283	2,388	5.85	5.80	5.40	5.10	-0.30	-5.56	-0.70	-12.07
Mexico	0.15	0.20	0.15	0.15	1,725	1,720	1,597	1,597	1.22	1.58	1.10	1.10	0.00	0.00	-0.48	-30.38
Burma	0.16	0.15	0.16	0.16	660	653	660	660	0.48	0.45	0.47	0.47	0.00	0.00	0.02	4.44
Others	1.77	1.66	1.67	1.66	561	583	542	529	4.56	4.46	4.15	4.03	-0.12	-2.89	-0.43	-9.58

World and Selected Countries and Regions

TABLE 18

The table below presents a record of the October projection and the final Estimate. Using world wheat production as an example, the "root mean square error" means that chances are 2 out of 3 that the current forecast will not be above or below the final estimate by more than 1.6 percent. Chances are 9 out of 10 (90% confidence level) that the difference will not exceed 2.7 percent. The average difference between the October projection and the final estimate is 7.0 million tons, ranging from 0.1 million to 26.7 million tons. The October projection has been below the estimate 30 times and above 11 times.

RELIABILITY OF PRODUCTION PROJECTIONS 1/

COMMODITY AND REGION	Root mean square error	90 percent confidence interval	Difference between forecast and final estimate				
			Average	Smallest	Largest	Years	
						Below final	Above final
	Percent		---Million metric tons---				
WHEAT							
World	1.6	2.7	7.0	0.1	26.7	30	11
U.S.	0.5	0.9	0.2	0.0	1.2	12	17
Foreign	1.8	3.0	7.0	0.1	26.8	30	11
COARSE GRAINS 2/							
World	1.9	3.2	15.8	0.8	51.9	31	10
U.S.	2.6	4.4	4.8	0.1	17.9	23	18
Foreign	2.4	4.1	14.9	0.6	61.4	32	9
RICE (Milled)							
World	2.2	3.7	6.2	0.0	20.9	32	8
U.S.	3.2	5.3	0.1	0.0	0.5	23	18
Foreign	2.2	3.8	6.2	0.1	21.0	32	9
SOYBEANS							
World	4.5	7.6	7.5	0.1	31.9	19	22
U.S.	2.8	4.7	1.5	0.0	4.0	17	24
Foreign	7.2	12.2	7.3	0.0	31.5	18	23
COTTON			---Million 480-lb. bales---				
World	4.4	7.4	2.9	0.0	10.9	21	19
U.S.	5.4	9.0	0.7	0.0	2.4	23	18
Foreign	5.0	8.4	2.6	0.0	10.5	19	21
UNITED STATES			-----Million bushels-----				
CORN	2.8	4.7	187	5	618	22	19
SORGHUM	6.7	11.2	19	0	71	22	18
BARLEY	1.4	2.4	3	0	24	9	16
OATS	2.4	4.0	2	0	18	6	12

1/ Marketing years 1981/82 through 2022/23 for grains, soybeans, and cotton. Final for grains, soybeans, and cotton is defined as the first November estimate following the marketing year for 1981/82 through 2021/22, and for 2022/23 the last month's estimate.

2/ Includes corn, sorghum, barley, oats, rye, millet, and mixed grain

October 2023

Global Market Analysis, FAS, USDA