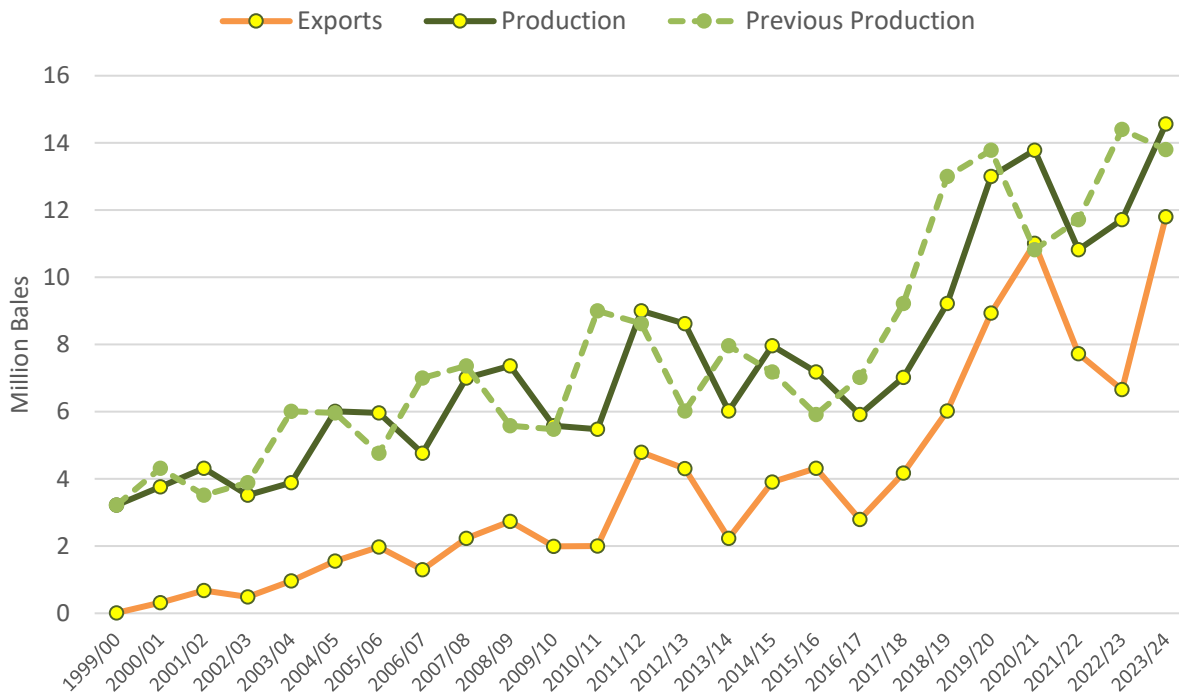


Cotton: World Markets and Trade

Historical Revisions to Brazil Production Significantly Lowers Stocks



Note: Marketing year is August – July; for example, 2023/24 represents August 2023 – July 2024.

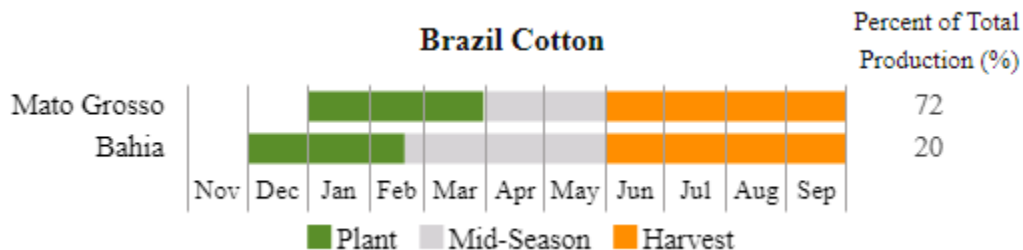
USDA implemented historical revisions this month to Brazil cotton production to better align with the timing of the harvest and exports as well as provide better estimates of Brazil ending stocks. Production and ending stocks were adjusted each year going back to the 2000/01 marketing year; no changes were made to historical consumption or export estimates. The chart above visually depicts the stronger relationship between the newly revised production estimates and exports.

The marketing year 2022/23 (August-July) balance sheet depicts cotton lint harvested, ginned, imported, exported, and domestically consumed from August 1, 2022 – July 31, 2023. Thus, the ending stock number estimates the number of physical bales in stock in Brazil as of July 31, 2023. Last month's 2022/23 production estimate was 14.4 million bales while the newly revised 2022/23 production estimate is 11.7 million bales. This estimate reflects the National Supply Company (CONAB) of the Brazil Ministry of Agriculture's 2021/22 estimate and was also USDA's 2021/22 estimate in September 2023. This was also the amount of cotton that CONAB estimates was harvested in calendar year 2022.

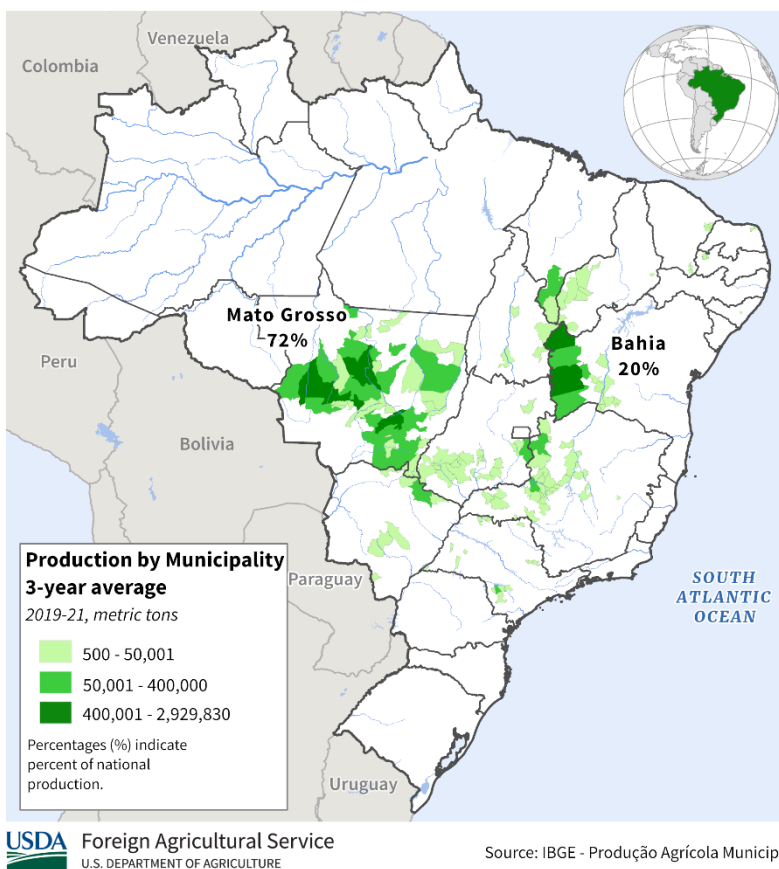
USDA's Brazil production estimates now reflect the calendar year harvest for the first listed year of the split (in this case, 2022 for 2022/23) instead of the previous method of using the next calendar year's harvest (in this case, 2023 for 2022/23). Last month's 2022/23 estimate of 14.4 million is now the basis for the 2023/24 production estimate. Therefore, each year's production estimate has shifted ahead to the next marketing year. The 2023/24 estimate is further adjusted higher to 14.6 million bales, reflecting a recent update by CONAB.

As Brazil is a Southern Hemisphere country with multiple harvests, forecasting and estimating its exports and stocks on a fixed annual schedule is challenging considering the varied timing of Brazil's harvest,

ginning, classing, and exports. Over the last 25 years, area harvested has expanded significantly in the state of Mato Grosso where cotton is largely planted as a second crop following the soybean harvest. Harvesting of cotton in Mato Grosso typically takes place between June and September and thus crosses over 2 of USDA’s August-July marketing years. Ginning and classing add further delays to the utilization of the crop, pushing it well into the latter August-July period.

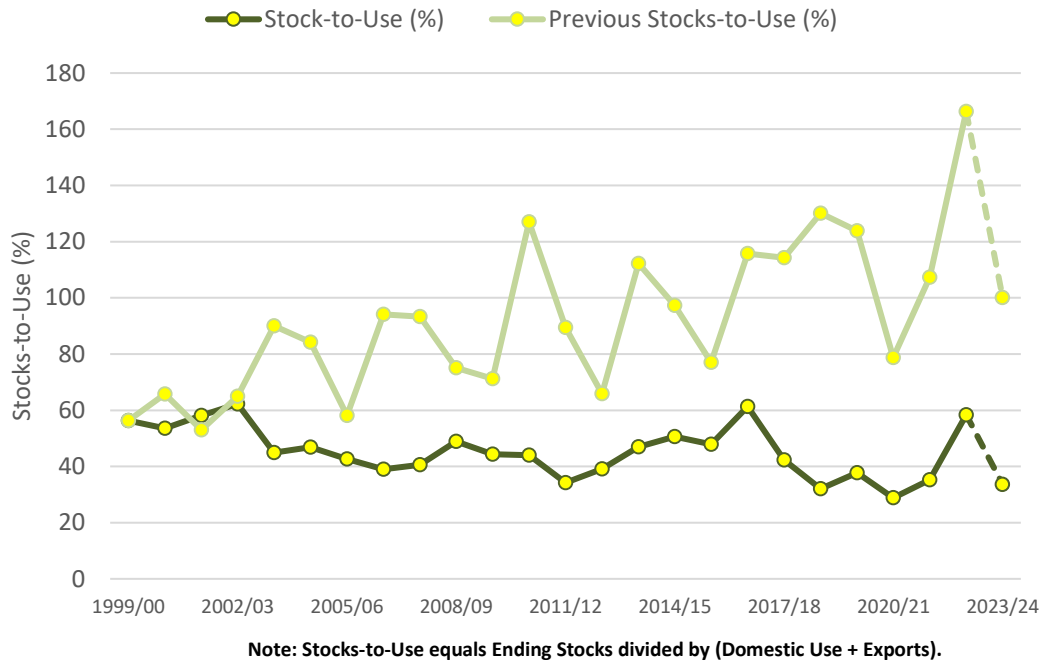


Brazil: Cotton Production

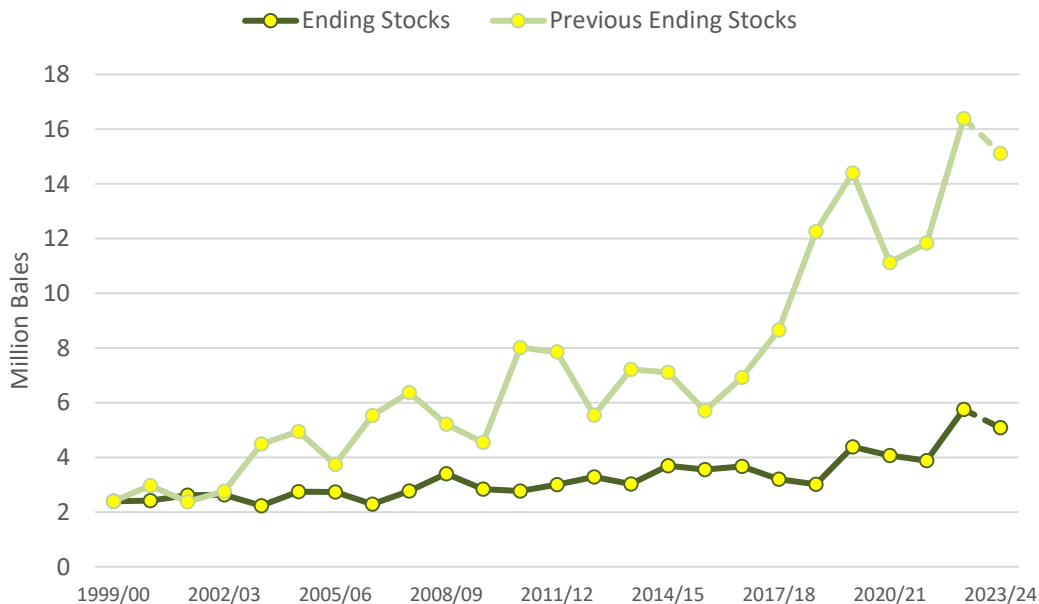


According to a September 2023 report from the Brazilian Association of Cotton Producers, 94 percent of the 2023 calendar year crop was harvested as of September 6 (the 2023 crop is now represented in the USDA 2023/24 balance sheet instead of the 2022/23 marketing year), 40 percent was ginned, and 33 percent had undergone High Volume Instrument Testing (HVI) for classing purposes. Given only one-third of the 2023 crop was HVI tested (i.e., classed) by early September further supports placing the crop in 2023/24.

The revised placement of production has a higher correlation with exports compared with the traditional method. This month's changes also lower the level and volatility of Brazil's Stocks-to-Use (i.e., July 31 ending stocks relative to marketing year domestic use and exports) as seen in the chart below.



Changes to the placement of Brazil production has significant implications for global ending stocks as well as those in Brazil. The old production methodology inflated ending stocks by effectively placing the next calendar year's crop in the ending stocks number. This overstated Brazil's 2023/24 beginning stocks by more than 10.0 million bales; therefore, 2023/24 beginning stocks (as of August 1, 2023) are now estimated at 5.8 million bales, compared with last month's estimate of 16.4 million.



2023/24 Brazil production forecast at 14.6 million bales is now expected to exceed U.S. production for the first time. As the second-largest projected exporter at 11.8 million bales, Brazil is close to surpassing U.S. exports for the first time since the nineteenth century. This month's changes to Brazil supplies better reflect the timing and competitive landscape between the two largest exporters. Lower Brazil stocks also have significant implications for 2023/24 global stocks, which are now forecast at 80.0 million bales, 10.0 million lower compared with last month's projection of 90.0 million.

2023/24 Outlook

Production is up slightly this month to 112.6 million bales as higher production in Brazil, Argentina, and Tanzania more than offset lower crops in Greece, the United States, and Australia. Historical revisions to Tanzania production date back to 2019/20; revisions starting in 2013/14 were made for Ethiopia.

Consumption is mostly unchanged at 115.8 million bales and is forecast nearly 5.0 million higher compared with the previous year. Upward revisions were made for Egypt dating back to 2019/20; historical revisions were also made to Ethiopia consumption (mostly lower). Downward revisions to Tanzania consumption were also included.

Global trade is mostly unchanged from last month at 43.2 million bales.

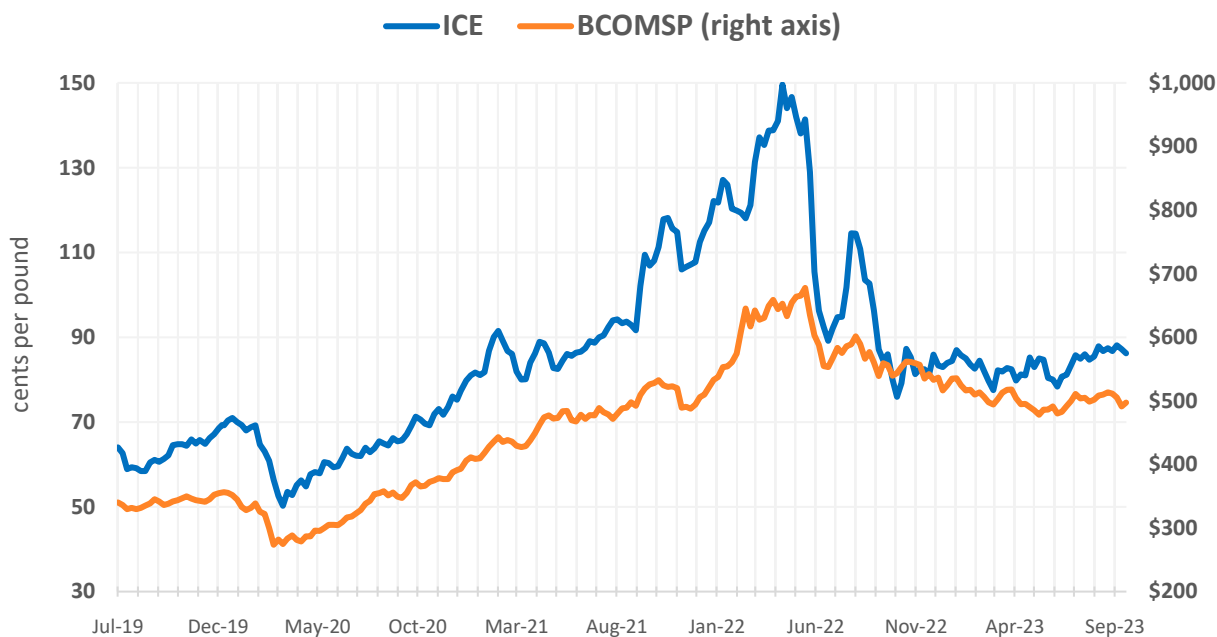
Global ending stocks are down to 80.0 million bales, due to historical revisions for Brazil. If realized, this would still be the second-highest level in 4 years. The U.S. season-average farm price for 2023/24 is forecast unchanged at 80 cents per pound.

2023/24 Trade Outlook (1,000 480-lb Bales)				
Major Importers:				
	Previous	Current	Change	Reason
WORLD	43,273	43,229	-44	
Mexico	1,000	850	-150	Lower consumption
Major Exporters:				
	Previous	Current	Change	Reason
WORLD	43,270	43,235	-35	
Argentina	550	700	150	Higher production
Tanzania	170	275	105	Higher production
Australia	5,800	5,700	-100	Lower production
Greece	1,100	1,000	-100	Lower production
United States	12,300	12,200	-100	Lower production

Futures and Spot Prices

Cotton futures were mostly unchanged since last month's WASDE with prices on the Intercontinental Exchange (ICE) settling at roughly 85 cents per pound. Despite a decline in commodity indices, including the Bloomberg Spot and the Standard & Poor's Goldman Sachs, cotton futures resisted pressure and were somewhat supported by deteriorating crop conditions. However, expectations for higher and sustained U.S. interest rates, coupled with lower U.S. equities, pressured futures.

Weekly ICE Cotton Futures and Bloomberg Commodity Spot Index



Note: The Intercontinental Exchange nearby Cotton No.2 Futures contract is reflected and found [here](#). The Bloomberg Commodity Spot Index (BCOMSP) is listed [here](#). The index measures the price movements of futures contracts for various commodities. It does not account for the effects of rolling futures contracts, or the costs associated with holding physical commodities and is quoted in USD.

Changes Since September WASDE (cents per pound)

	A-Index	U.S.	China	India	Brazil	Pakistan
8-Sep	95.9	79.4	112.6	94.0	82.9	71.3
10-Oct	97.3	80.8	114.2	89.9	80.2	71.2
Change	1.4	1.4	1.6	-4.1	-2.7	-0.1

U.S. prices were mostly unchanged at 81 cents per pound as macroeconomic concerns offset deteriorating crop conditions. Basis across most regions improved since last month as West Texas-Kansas-Oklahoma narrowed from around -800 basis points to -700. Average basis across U.S. regions remains around 500 points lower compared with the previous year.

China prices were mostly unchanged at 114 cents per pound but up slightly when priced in yuan. Relative to ICE, prices are nearly 30 cents higher and the highest of the major producing countries. This is a significant change compared with last year when spot prices were lower compared with other major origins. Higher basis has been somewhat supported by higher consumption relative to production;

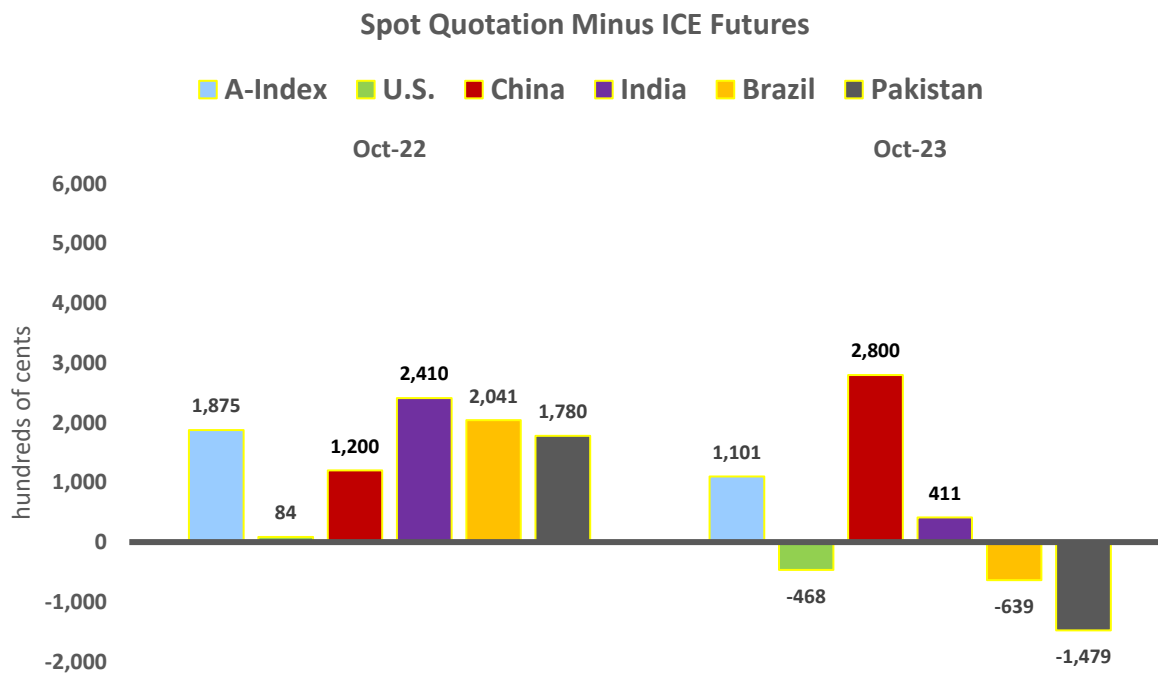
2023/24 production is forecast to fall more than 3.5 million bales to 27.0 million bales.

India prices were down more than 4 cents per pound to settle at 90 cents, likely due to greater arrivals of cotton at gin yards. Basis is roughly 4 cents per pound, significantly lower than last year’s level at around 24 cents. 2023/24 beginning stocks are estimated 3.0 million bales higher compared with last year at 11.7 million and continue to pressure basis.

Brazil prices were down more than 2 cents per pound to 80 cents as burgeoning supplies pressure prices. Basis is roughly -6 cents, down from last year’s level of 20 cents per pound. Significantly lower basis is somewhat attributed to 2023/24 beginning stocks and production rising nearly 5.0 million bales compared with the previous year.

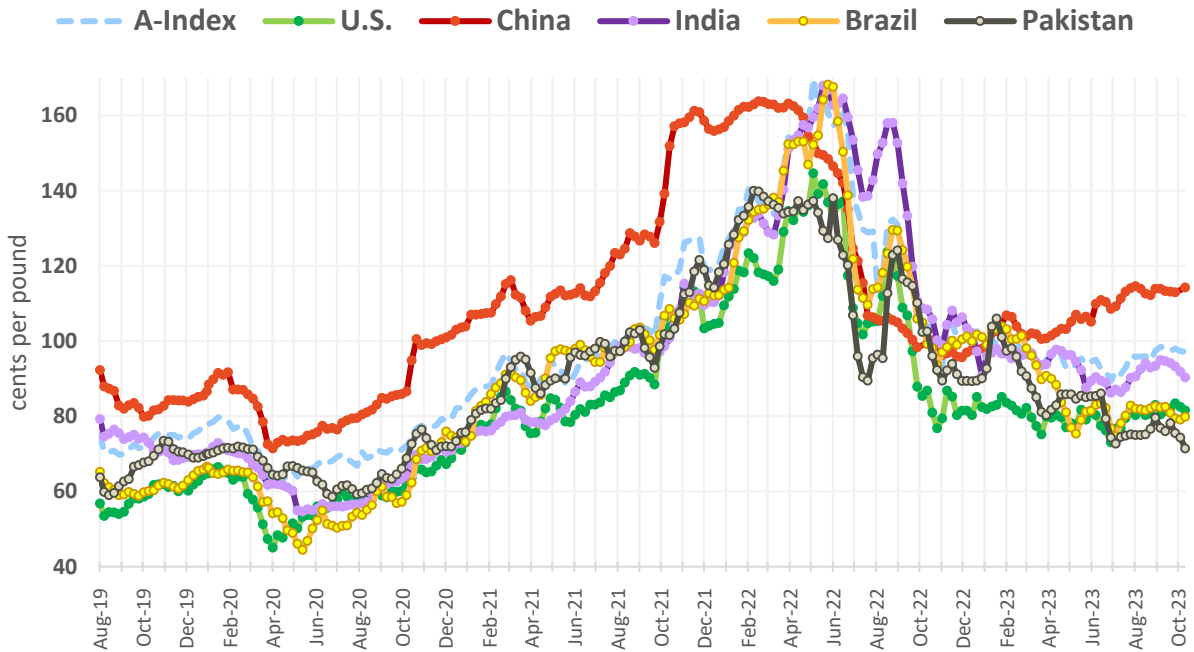
Pakistan prices were unchanged at 71 cents per pound, the lowest spot price of the major producing origins. Despite a stronger Pakistani Rupee compared with last month, cotton lint priced in rupees fell 8 percent as 2023/24 production is forecast to rise more than 2.5 million bales to 6.2 million. Pakistan has witnessed the most dramatic change in basis as recent levels were -15 cents per pound compared with 18 cents last year (total difference of nearly 40 cents year over year).

The observed **A-Index** this month includes the simple average of the following 5 origins: Brazilian, Ivory Coast, Australian, Burkina Faso, and Greek. Brazil is the lowest quoted origin at 95.75 cents per pound and Greek is the highest at 97.75 cents. The A-Index relative to ICE is significantly lower compared with last year at roughly 10 cents per pound and is mostly attributed to lower transportation costs. Note the A-index includes the 5 *cheapest* origins of ‘medium grade’ cotton landed at a port in the Far East; quotations are compiled and published daily.



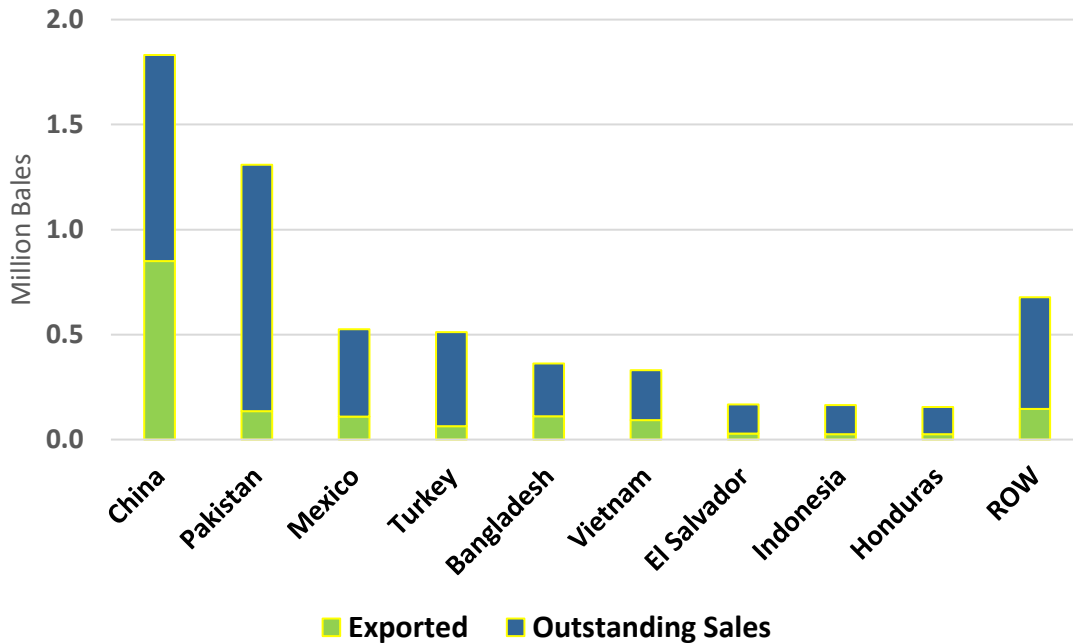
Notes: The chart visualizes a general value for basis (i.e., cash/spot price minus futures). Quality and location (gin, port, textile mill, etc.) are significant in determining the quotation’s relative value and basis. Please reference page 8 for additional information.

Weekly Cotton Prices



Note: Please reference page 8 for additional information regarding each price series.

U.S. 2023/24 Shipments & Outstanding Sales (August 1 - September 28)



Source: USDA FAS Export Sales Reporting (ESR); Note: ROW (Rest of World)

Questions may be directed to:

Graham Soley – Foreign Agricultural Service (FAS) 202-772-4235 (graham.soley@usda.gov)

Notes on Price Series

A-Index is published by Cotton Outlook and reflects the average of the five cheapest quotations (quality being middling 1^{1/8}) of upland cottons traded internationally; the delivery price reflects Cost and Freight (CFR) to a Far Eastern Port.

U.S. is the simple average reported by the Agricultural Marketing Service, Free On Board (FOB) car/truck across seven U.S. spot markets of grade strict low middling.

China is the reported China Cotton Price Index (i.e., CCIndex 3128B) and reflects the national weighted average of middling grade cotton; the delivery price is at the textile mill in China.

India is the Shankar-6 (middling grade 29-3.8-76) spot price and is reported ex-gin (at the gin yard) in Gujarat.

Brazil is strict low middling and reflects the delivered price to a mill in São Paulo.

Pakistan is the ex-gin (at the gin yard) price in Karachi reflecting a 1^{1/16} staple and grade 3.

Month-Year [Historical Cotton: World Markets and Trade Publications](#)

Sep-23	USDA Methodology for Calculating U.S. Cotton Exports
Aug-23	Bangladesh: Growing Apparel Exports Set to Boost 2023/24 Consumption
Jul-23	2022/23 China Imports Fall to 5-Year Low
Jun-23	2022/23 Indonesia Consumption Collapses
May-23	2023/24 Global Use Forecast at 3-Year High
Apr-23	India Exports Fall Drastically as Imports Rise
Mar-23	2022 U.S. Cotton Product Imports Decline from Last Year's Surge
Feb-23	Pakistan 2022/23 Consumption Projected at Lowest Level in 21 Years
Jan-23	2022/23 U.S. Exports Fall on Lower Global Demand
Dec-22	2022/23 Global Consumption Projected Down Again
Nov-22	China's Sluggish Yarn Imports Signal Slowing Global Cotton Consumption
Oct-22	U.S. Exports Down to the Lowest Level in 7 Years
Sep-22	Pakistan: Constrained Supplies Drive 2022/23 Consumption Lower
Aug-22	2021/22 U.S. Exports Fall on Lower Supplies
Jul-22	Global 2021/22 Imports and Consumption Lowered Significantly Since January
Jun-22	China 2021/22 Imports Lowered Again This Month
May-22	2022/23 Global Cotton Consumption Forecast Down from Last Year

The Foreign Agricultural Service (FAS) updates its production, supply, and distribution (PSD) database for cotton, oilseeds, and grains at 12:00 p.m. on the day the *World Agricultural Supply and Demand Estimates* (WASDE) report is released. This circular is released by 12:15 p.m.

FAS Reports and Databases:

Current *World Markets and Trade and World Agricultural Production* Reports:

<https://apps.fas.usda.gov/psdonline/app/index.html#/app/downloads>

Archives *World Markets and Trade and World Agricultural Production* Reports:

<http://usda.mannlib.cornell.edu/MannUsda/viewTaxonomy.do?taxonomyID=7>

Production, Supply and Distribution Database (PSD Online):

<https://apps.fas.usda.gov/psdonline/app/index.html#/app/home>

Global Agricultural Trade System (U.S. Exports and Imports):

<http://apps.fas.usda.gov/gats/default.aspx>

Export Sales Report:

<http://apps.fas.usda.gov/esrquery/>

Global Agricultural Information Network (Agricultural Attaché Reports):

<http://gain.fas.usda.gov/Pages/Default.aspx>

Other USDA Reports:

World Agricultural Supply and Demand Estimates (WASDE):

<http://www.usda.gov/oce/commodity/wasde/>

Economic Research Service:

<http://www.ers.usda.gov/topics/crops>

National Agricultural Statistics Service:

<http://www.nass.usda.gov/Publications>

Summary of Changes in estimates and Forecasts from Last Month
(1,000 480 lb Bales and 1,000 Ha)

Country Mktg Year	Area Harvested	Beginning Stocks	Production	Imports	Exports	Domestic Use	Loss	Ending Stocks
Argentina								
2022/23	62	0	350	0	1	0	0	349
2023/24	40	349	125	0	150	25	0	299
Australia								
2023/24	-50	0	-300	0	-100	0	0	-200
Austria								
2021/22	0	0	0	0	0	-2	0	2
2022/23	0	2	0	-4	0	-2	0	0
Bahrain								
2022/23	0	0	0	-4	0	-2	0	-2
2023/24	0	-2	0	0	0	-1	0	-1
Brazil								
2000/01	-50	0	-548	0	0	0	0	-548
2001/02	105	-548	793	0	0	0	0	245
2002/03	13	245	-371	0	0	0	0	-126
2003/04	-365	-126	-2,125	0	0	0	0	-2,251
2004/05	-80	-2,251	55	0	0	0	0	-2,196
2005/06	325	-2,196	1,200	0	0	0	0	-996
2006/07	-240	-996	-2,240	0	0	0	0	-3,236
2007/08	20	-3,236	-360	0	0	0	0	-3,596
2008/09	230	-3,596	1,780	0	0	0	0	-1,816
2009/10	10	-1,816	100	0	0	0	0	-1,716
2010/11	-565	-1,716	-3,520	0	0	0	0	-5,236
2011/12	5	-5,236	380	0	0	0	0	-4,856
2012/13	500	-4,856	2,600	0	0	0	0	-2,256
2013/14	-225	-2,256	-1,940	0	0	0	0	-4,196
2014/15	145	-4,196	780	0	0	0	0	-3,416
2015/16	20	-3,416	1,260	0	0	0	0	-2,156
2016/17	15	-2,156	-1,100	0	0	0	0	-3,256
2017/18	-235	-3,256	-2,200	0	0	0	0	-5,456
2018/19	-465	-5,456	-3,780	0	0	0	0	-9,236
2019/20	-25	-9,236	-780	0	0	0	0	-10,016
2020/21	295	-10,016	2,960	0	0	0	-3	-7,053
2021/22	-230	-7,053	-900	0	0	0	0	-7,953
2022/23	-60	-7,953	-2,680	0	0	0	0	-10,633
2023/24	-10	-10,633	760	0	0	0	0	-9,873
Canada								

Summary of Changes in estimates and Forecasts from Last Month (Continued)
(1,000 480 lb Bales and 1,000 Ha)

Country Mktg Year	Area Harvested	Beginning Stocks	Production	Imports	Exports	Domestic Use	Loss	Ending Stocks
2022/23	0	0	0	-1	0	-1	0	0
Colombia								
2022/23	0	0	0	-11	0	-5	0	-6
2023/24	0	-6	0	0	0	0	0	-6
Costa Rica								
2022/23	0	0	0	5	0	5	0	0
2023/24	0	0	0	10	0	7	0	3
Cote d'Ivoire								
2022/23	0	0	0	0	1	0	0	-1
2023/24	0	-1	0	0	0	0	0	-1
Ecuador								
2022/23	0	0	0	-8	0	-5	0	-3
2023/24	0	-3	0	0	0	-5	0	2
Egypt								
2021/22	0	0	0	100	0	100	0	0
2022/23	0	0	0	125	0	100	0	25
2023/24	0	25	0	75	0	50	0	50
Estonia								
2022/23	0	0	0	1	0	1	0	0
Ethiopia								
2010/11	0	0	0	0	-19	15	0	4
2011/12	0	4	0	0	-100	80	0	24
2012/13	0	24	0	0	-70	50	0	44
2013/14	0	44	31	5	-55	75	0	60
2014/15	0	60	118	25	-5	75	0	133
2015/16	0	133	20	-40	0	40	0	73
2016/17	0	73	30	-40	10	30	0	23
2017/18	0	23	15	-56	0	-15	0	-3
2018/19	0	-3	21	-25	-3	-50	0	46
2019/20	-30	46	-102	-25	-10	-50	0	-21
2020/21	-30	-21	-90	-20	-5	-125	0	-1
2021/22	-30	-1	-76	-10	-5	-50	0	-32
2022/23	-28	-32	-60	-10	0	-75	0	-27
2023/24	-27	-27	-60	-10	0	-75	0	-22
France								
2022/23	0	0	0	-1	-2	1	0	0

Summary of Changes in estimates and Forecasts from Last Month (Continued)
(1,000 480 lb Bales and 1,000 Ha)

Country Mktg Year	Area Harvested	Beginning Stocks	Production	Imports	Exports	Domestic Use	Loss	Ending Stocks
Germany								
2022/23	0	0	0	1	-3	4	0	0
2023/24	0	0	0	0	-5	5	0	0
Greece								
2022/23	0	0	0	-3	31	0	0	-34
2023/24	-10	-34	-120	0	-100	0	0	-54
Guatemala								
2022/23	0	0	0	7	0	10	0	-3
2023/24	0	-3	0	-15	0	-10	0	-8
Hong Kong								
2022/23	0	0	0	-5	-8	0	0	3
2023/24	0	3	0	0	0	0	0	3
Hungary								
2022/23	0	0	0	-1	-1	0	0	0
India								
2022/23	0	0	0	-23	-51	0	0	28
2023/24	100	28	0	0	0	0	0	28
Italy								
2022/23	0	0	0	-6	-2	0	0	-4
2023/24	0	-4	0	5	5	-5	0	1
Kazakhstan								
2021/22	0	0	0	0	2	0	0	-2
2022/23	0	-2	0	0	21	0	0	-23
2023/24	0	-23	0	0	0	0	0	-23
Latvia								
2022/23	0	0	0	-2	0	-2	0	0
Malaysia								
2022/23	0	0	0	-13	-24	0	0	11
2023/24	0	11	0	0	0	0	0	11
Mauritius								
2022/23	0	0	0	-4	0	0	0	-4
2023/24	0	-4	0	0	0	0	0	-4
Mexico								
2022/23	0	0	0	-11	7	0	0	-18

Summary of Changes in estimates and Forecasts from Last Month (Continued)
(1,000 480 lb Bales and 1,000 Ha)

Country Mktg Year	Area Harvested	Beginning Stocks	Production	Imports	Exports	Domestic Use	Loss	Ending Stocks
2023/24	0	-18	0	-150	0	-50	0	-118
Morocco								
2022/23	0	0	0	-3	0	-1	0	-2
2023/24	0	-2	0	0	0	-1	0	-1
Netherlands								
2022/23	0	0	0	-2	1	-2	0	-1
2023/24	0	-1	0	0	0	0	0	-1
Peru								
2022/23	0	0	0	-7	1	-5	0	-3
2023/24	0	-3	0	5	0	0	0	2
Poland								
2022/23	0	0	0	2	0	2	0	0
Portugal								
2022/23	0	0	0	-4	2	-5	0	-1
2023/24	0	-1	0	0	0	0	0	-1
Russia								
2019/20	0	0	0	0	-3	0	0	3
2020/21	0	3	0	0	-2	0	0	5
2021/22	0	5	0	0	-3	0	0	8
2022/23	0	8	0	25	0	25	0	8
2023/24	0	8	0	35	0	35	0	8
Slovakia								
2022/23	0	0	0	-1	0	-1	0	0
Slovenia								
2022/23	0	0	0	1	0	1	0	0
2023/24	0	0	0	1	0	1	0	0
South Africa								
2022/23	3	0	3	0	0	0	0	3
2023/24	0	3	0	0	0	0	0	3
Spain								
2022/23	0	0	0	0	-8	0	0	8
2023/24	0	8	0	0	10	0	0	-2
Taiwan								
2022/23	0	0	0	-5	0	0	0	-5

Summary of Changes in estimates and Forecasts from Last Month (Continued)
(1,000 480 lb Bales and 1,000 Ha)

Country Mktg Year	Area Harvested	Beginning Stocks	Production	Imports	Exports	Domestic Use	Loss	Ending Stocks
2023/24	0	-5	0	0	0	0	0	-5
Tanzania								
2019/20	171	0	-1	0	100	-40	0	-61
2020/21	100	-61	2	0	0	-50	0	-9
2021/22	99	-9	0	0	50	-75	0	16
2022/23	10	16	-45	0	50	-75	0	-4
2023/24	115	-4	120	0	105	-65	0	76
United States								
2023/24	0	0	-315	0	-100	0	-15	-200
Zambia								
2022/23	0	0	0	0	3	0	0	-3
2023/24	0	-3	0	0	0	0	0	-3
World								
World								
2000/01	-50	0	-548	0	0	0	0	-548
2001/02	105	-548	793	0	0	0	0	245
2002/03	13	245	-371	0	0	0	0	-126
2003/04	-365	-126	-2,125	0	0	0	0	-2,251
2004/05	-80	-2,251	55	0	0	0	0	-2,196
2005/06	325	-2,196	1,200	0	0	0	0	-996
2006/07	-240	-996	-2,240	0	0	0	0	-3,236
2007/08	20	-3,236	-360	0	0	0	0	-3,596
2008/09	230	-3,596	1,780	0	0	0	0	-1,816
2009/10	10	-1,816	100	0	0	0	0	-1,716
2010/11	-565	-1,716	-3,520	0	-19	15	0	-5,232
2011/12	5	-5,232	380	0	-100	80	0	-4,832
2012/13	500	-4,832	2,600	0	-70	50	0	-2,212
2013/14	-225	-2,212	-1,909	5	-55	75	0	-4,136
2014/15	145	-4,136	898	25	-5	75	0	-3,283
2015/16	20	-3,283	1,280	-40	0	40	0	-2,083
2016/17	15	-2,083	-1,070	-40	10	30	0	-3,233
2017/18	-235	-3,233	-2,185	-56	0	-15	0	-5,459
2018/19	-465	-5,459	-3,759	-25	-3	-50	0	-9,190
2019/20	116	-9,190	-883	-25	87	-90	0	-10,095
2020/21	365	-10,095	2,872	-20	-7	-175	-3	-7,058
2021/22	-161	-7,058	-976	90	44	-27	0	-7,961
2022/23	-13	-7,961	-2,432	36	19	-34	0	-10,342

Summary of Changes in estimates and Forecasts from Last Month (Continued)
(1,000 480 lb Bales and 1,000 Ha)

Country Mktg Year	Area Harvested	Beginning Stocks	Production	Imports	Exports	Domestic Use	Loss	Ending Stocks
2023/24	158	-10,342	210	-44	-35	-89	-15	-10,037

Table 01 Cotton World Supply, Use, and Trade (Season Beginning August 1)
(1000 MT)

	2019/20	2020/21	2021/22	2022/23	Sep 2023/24	Oct 2023/24
Production						
China	5,977	6,445	5,835	6,684	5,879	5,879
India	6,205	6,009	5,313	5,661	5,443	5,443
Brazil	2,830	3,000	2,356	2,552	3,005	3,170
United States	4,336	3,181	3,815	3,150	2,859	2,791
Pakistan	1,350	980	1,306	849	1,415	1,415
Australia	136	610	1,274	1,263	1,176	1,110
Turkey	751	631	827	1,067	762	762
Other	4,363	4,003	4,236	4,089	3,932	3,947
Total	25,948	24,858	24,962	25,314	24,471	24,517
Domestic Use						
China	7,457	8,981	7,348	8,165	8,165	8,165
India	4,463	5,661	5,443	5,117	5,225	5,225
Pakistan	2,068	2,373	2,330	1,894	2,177	2,177
Turkey	1,557	1,818	1,872	1,633	1,742	1,742
Bangladesh	1,524	1,851	1,851	1,546	1,676	1,676
Vietnam	1,437	1,589	1,459	1,404	1,502	1,502
Brazil	588	675	718	697	718	718
Other	3,754	4,055	4,219	3,685	4,022	4,003
Total	22,849	27,003	25,240	24,140	25,229	25,210
Imports						
China	1,554	2,800	1,707	1,357	2,177	2,177
Bangladesh	1,633	1,807	1,785	1,426	1,676	1,676
Vietnam	1,411	1,587	1,444	1,409	1,502	1,502
Turkey	1,017	1,160	1,203	912	958	958
Pakistan	871	1,176	980	980	914	914
Indonesia	547	502	561	362	501	501
India	496	184	218	376	283	283
Other	1,294	1,353	1,402	1,273	1,409	1,400
Total	8,823	10,569	9,300	8,095	9,422	9,412
Exports						
United States	3,377	3,560	3,153	2,779	2,678	2,656
Brazil	1,946	2,398	1,682	1,449	2,569	2,569
Australia	296	344	779	1,342	1,263	1,241
India	697	1,348	815	239	435	435
Mali	256	152	283	163	250	250
Benin	211	342	370	218	245	245
Greece	319	355	311	290	239	218
Other	1,870	2,170	2,022	1,576	1,741	1,798
Total	8,973	10,669	9,415	8,056	9,421	9,413
Ending Stocks						
China	7,859	8,120	8,288	8,143	8,013	8,013
India	3,415	2,599	1,872	2,553	2,612	2,618
Brazil	955	885	845	1,253	3,289	1,140
Australia	261	546	1,080	1,040	995	951
United States	1,579	686	882	925	653	610
Pakistan	697	474	419	332	468	468
Bangladesh	551	539	507	420	454	454
Other	3,827	3,080	2,773	3,368	3,103	3,148
Total	19,143	16,929	16,665	18,035	19,587	17,402

Table 02 Cotton World Supply, Use, and Trade (Season Beginning August 1)
(1000 Bales)

	2019/20	2020/21	2021/22	2022/23	Sep 2023/24	Oct 2023/24
Production						
China	27,450	29,600	26,800	30,700	27,000	27,000
India	28,500	27,600	24,400	26,000	25,000	25,000
Brazil	13,000	13,780	10,820	11,720	13,800	14,560
United States	19,913	14,608	17,523	14,468	13,132	12,817
Pakistan	6,200	4,500	6,000	3,900	6,500	6,500
Australia	625	2,800	5,850	5,800	5,400	5,100
Turkey	3,450	2,900	3,800	4,900	3,500	3,500
Other	20,040	18,385	19,455	18,779	18,061	18,126
Total	119,178	114,173	114,648	116,267	112,393	112,603
Domestic Use						
China	34,250	41,250	33,750	37,500	37,500	37,500
India	20,500	26,000	25,000	23,500	24,000	24,000
Pakistan	9,500	10,900	10,700	8,700	10,000	10,000
Turkey	7,150	8,350	8,600	7,500	8,000	8,000
Bangladesh	7,000	8,500	8,500	7,100	7,700	7,700
Vietnam	6,600	7,300	6,700	6,450	6,900	6,900
Brazil	2,700	3,100	3,300	3,200	3,300	3,300
Uzbekistan	2,375	3,250	3,300	2,900	3,200	3,200
Indonesia	2,400	2,450	2,600	1,750	2,200	2,200
United States	2,150	2,400	2,550	2,050	2,150	2,150
Other	10,317	10,523	10,927	10,223	10,925	10,836
Total	104,942	124,023	115,927	110,873	115,875	115,786
Imports						
China	7,137	12,860	7,840	6,232	10,000	10,000
Bangladesh	7,500	8,300	8,200	6,550	7,700	7,700
Vietnam	6,481	7,288	6,631	6,471	6,900	6,900
Turkey	4,672	5,327	5,524	4,189	4,400	4,400
Pakistan	4,000	5,400	4,500	4,500	4,200	4,200
Indonesia	2,512	2,307	2,577	1,664	2,300	2,300
India	2,280	844	1,000	1,727	1,300	1,300
Mexico	590	928	959	689	1,000	850
Thailand	700	598	750	662	725	725
Korea, South	571	556	558	440	525	525
Other	4,081	4,133	4,173	4,057	4,223	4,329
Total	40,524	48,541	42,712	37,181	43,273	43,229
Exports						
United States	15,512	16,352	14,481	12,766	12,300	12,200
Brazil	8,937	11,014	7,727	6,656	11,800	11,800
Australia	1,359	1,581	3,577	6,162	5,800	5,700
India	3,200	6,189	3,743	1,099	2,000	2,000
Mali	1,175	700	1,300	750	1,150	1,150
Benin	970	1,570	1,700	1,000	1,125	1,125
Greece	1,467	1,630	1,428	1,331	1,100	1,000
Cote d'Ivoire	643	1,176	1,350	479	725	725
Argentina	390	563	658	186	550	700
Burkina Faso	950	1,067	900	750	700	700
Other	6,607	7,160	6,378	5,823	6,020	6,135
Total	41,210	49,002	43,242	37,002	43,270	43,235
Ending Stocks						
China	36,094	37,294	38,064	37,402	36,802	36,802
India	15,684	11,939	8,596	11,724	11,996	12,024
Brazil	4,388	4,066	3,883	5,755	15,108	5,235
Australia	1,198	2,507	4,960	4,778	4,568	4,368
United States	7,250	3,150	4,050	4,250	3,000	2,800
Pakistan	3,200	2,175	1,925	1,525	2,150	2,150
Bangladesh	2,530	2,477	2,328	1,931	2,086	2,086
Other	17,577	14,144	12,735	15,470	14,251	14,459
Total	87,921	77,752	76,541	82,835	89,961	79,924

Table 04 Cotton Area, Yield, and Production

Country / Region	Area (Million hectares)				Yield (Kilograms per hectare)				Production (Million 480 lb. bales)				Change in Production			
	Prel.		2023/24 Proj.		Prel.		2023/24 Proj.		Prel.		2023/24 Proj.		From last month		From last year	
	2021/22	2022/23	Sep	Oct	2021/22	2022/23	Sep	Oct	2021/22	2022/23	Sep	Oct	MBales	Percent	MBales	Percent
World	32.33	31.81	31.78	31.94	772	796	770	768	114.65	116.27	112.39	112.60	0.21	0.19	-3.66	-3.15
United States	4.16	2.96	3.25	3.25	918	1,065	881	860	17.52	14.47	13.13	12.82	-0.32	-2.40	-1.65	-11.41
Total Foreign	28.17	28.85	28.54	28.70	751	768	757	757	97.13	101.80	99.26	99.79	0.53	0.53	-2.01	-1.98
Western Hemisphere																
Brazil	1.37	1.60	1.67	1.66	1,720	1,595	1,799	1,910	10.82	11.72	13.80	14.56	0.76	5.51	2.84	24.23
Mexico	0.15	0.20	0.15	0.15	1,725	1,720	1,597	1,597	1.22	1.58	1.10	1.10	0.00	0.00	-0.48	-30.38
Argentina	0.48	0.51	0.41	0.45	624	627	611	617	1.38	1.48	1.15	1.28	0.13	10.87	-0.20	-13.56
Paraguay	0.02	0.04	0.03	0.03	527	877	806	806	0.05	0.14	0.10	0.10	0.00	0.00	-0.04	-29.08
Peru	0.01	0.01	0.01	0.01	636	891	990	990	0.04	0.05	0.05	0.05	0.00	0.00	0.01	11.11
Colombia	0.01	0.01	0.01	0.01	1,279	871	950	950	0.05	0.04	0.05	0.05	0.00	0.00	0.01	33.33
Africa																
Burkina Faso	0.60	0.62	0.49	0.49	351	273	311	311	0.96	0.78	0.70	0.70	0.00	0.00	-0.08	-9.68
Mali	0.72	0.60	0.70	0.70	432	269	389	389	1.43	0.74	1.25	1.25	0.00	0.00	0.52	70.07
Cote d'Ivoire	0.47	0.41	0.39	0.39	486	236	424	424	1.05	0.45	0.76	0.76	0.00	0.00	0.32	70.79
Cameroon	0.23	0.23	0.25	0.25	606	563	578	578	0.64	0.60	0.65	0.65	0.00	0.00	0.05	8.33
Benin	0.64	0.57	0.53	0.53	483	418	483	483	1.42	1.10	1.18	1.18	0.00	0.00	0.08	6.82
Chad	0.33	0.22	0.22	0.22	201	196	192	192	0.30	0.20	0.19	0.19	0.00	0.00	-0.01	-5.00
Togo	0.07	0.07	0.09	0.09	295	297	278	278	0.10	0.09	0.12	0.12	0.00	0.00	0.03	27.78
Senegal	0.02	0.02	0.02	0.02	508	320	399	399	0.04	0.03	0.03	0.03	0.00	0.00	0.01	32.00
Egypt	0.09	0.14	0.11	0.11	717	661	693	693	0.28	0.43	0.35	0.35	0.00	0.00	-0.08	-17.65
Zimbabwe	0.25	0.24	0.24	0.24	191	195	195	195	0.22	0.22	0.22	0.22	0.00	0.00	0.00	0.00
Nigeria	0.27	0.27	0.27	0.27	282	282	282	282	0.35	0.35	0.35	0.35	0.00	0.00	0.00	0.00
Asia Oceania																
China	3.10	3.15	2.90	2.90	1,882	2,122	2,027	2,027	26.80	30.70	27.00	27.00	0.00	0.00	-3.70	-12.05
India	12.37	13.00	12.60	12.70	429	435	432	429	24.40	26.00	25.00	25.00	0.00	0.00	-1.00	-3.85
Pakistan	2.00	1.80	2.60	2.60	653	472	544	544	6.00	3.90	6.50	6.50	0.00	0.00	2.60	66.67
Kazakhstan	0.11	0.13	0.12	0.12	467	584	490	490	0.24	0.34	0.27	0.27	0.00	0.00	-0.07	-19.40
Tajikistan	0.17	0.17	0.17	0.17	608	615	640	640	0.48	0.48	0.50	0.50	0.00	0.00	0.02	4.17
Turkmenistan	0.55	0.55	0.55	0.55	356	356	356	356	0.90	0.90	0.90	0.90	0.00	0.00	0.00	0.00
Uzbekistan	1.06	1.07	1.03	1.03	588	671	613	613	2.87	3.30	2.90	2.90	0.00	0.00	-0.40	-12.12
Turkey	0.45	0.56	0.44	0.44	1,839	1,922	1,732	1,732	3.80	4.90	3.50	3.50	0.00	0.00	-1.40	-28.57
Australia	0.64	0.65	0.52	0.47	2,006	1,943	2,283	2,388	5.85	5.80	5.40	5.10	-0.30	-5.56	-0.70	-12.07
Syria	0.03	0.03	0.03	0.03	1,132	1,132	1,132	1,132	0.13	0.13	0.13	0.13	0.00	0.00	0.00	0.00
Burma	0.16	0.15	0.16	0.16	660	653	660	660	0.48	0.45	0.47	0.47	0.00	0.00	0.02	4.44
Europe																
Greece	0.26	0.26	0.21	0.20	1,163	1,238	1,109	1,034	1.40	1.45	1.07	0.95	-0.12	-11.21	-0.50	-34.48
Others	1.57	1.60	1.65	1.73	481	476	474	458	3.46	3.50	3.59	3.65	0.06	1.67	0.15	4.23

Table 05 Cotton Supply and Distribution MY 2023/24
(1,000 HA and 1000 480-lb. Bales)

Country	Area Harvested	Production	Imports	Total Supply	Domestic Use	Loss	Exports	Ending Stocks
Afghanistan	95	200	0	217	15	0	175	27
Albania	1	1	0	2	1	0	0	1
Algeria	0	0	40	58	40	0	0	18
Angola	3	5	0	10	5	0	0	5
Argentina	450	1,275	0	3,346	725	0	700	1,921
Armenia	0	0	1	1	1	0	0	0
Australia	465	5,100	0	9,878	10	-200	5,700	4,368
Austria	0	0	13	14	12	0	0	2
Azerbaijan	110	520	0	751	50	0	500	201
Bahrain	0	0	30	34	29	0	0	5
Bangladesh	46	155	7,700	9,786	7,700	0	0	2,086
Belarus	0	0	15	18	15	0	0	3
Belgium-Luxembourg	0	0	20	24	15	0	5	4
Benin	530	1,175	0	1,413	15	0	1,125	273
Bolivia	4	10	1	20	12	0	0	8
Brazil	1,660	14,560	20	20,335	3,300	0	11,800	5,235
Bulgaria	2	10	10	27	20	0	0	7
Burkina Faso	490	700	0	806	15	0	700	91
Burma	155	470	0	581	400	0	90	91
Cambodia	0	0	1	2	1	0	0	1
Cameroon	245	650	0	879	20	0	625	234
Canada	0	0	2	2	2	0	0	0
Central African Republic	34	36	0	54	0	0	37	17
Chad	215	190	0	315	10	0	210	95
Chile	0	0	1	2	1	0	0	1
China	2,900	27,000	10,000	74,402	37,500	0	100	36,802
Colombia	11	48	55	123	100	0	0	23
Congo (Kinshasa)	30	15	2	21	17	0	0	4
Costa Rica	0	0	60	71	57	0	0	14
Cote d'Ivoire	390	760	0	874	10	0	725	139
Croatia	0	0	1	1	1	0	0	0
Cuba	4	4	5	11	9	0	0	2
Cyprus	0	0	1	1	1	0	0	0
Czech Republic	0	0	5	6	5	0	0	1
Denmark	0	0	0	0	0	0	0	0

Table 05 Cotton Supply and Distribution MY 2023/24 (Continued)
(1,000 HA and 1000 480-lb. Bales)

Country	Area Harvested	Production	Imports	Total Supply	Domestic Use	Loss	Exports	Ending Stocks
Dominican Republic	0	0	2	3	2	0	0	1
Ecuador	3	9	55	73	60	0	0	13
Egypt	110	350	475	1,020	500	0	325	195
El Salvador	0	0	220	260	210	0	0	50
Estonia	0	0	12	16	13	0	0	3
Ethiopia	55	180	0	263	175	0	5	83
France	0	0	40	47	40	0	0	7
Germany	0	0	75	89	70	0	5	14
Ghana	15	28	0	36	15	0	15	6
Greece	200	950	30	1,209	70	0	1,000	139
Guatemala	2	3	200	241	200	0	0	41
Guinea	13	18	0	21	0	0	18	3
Haiti	7	5	0	6	5	0	0	1
Honduras	0	0	125	142	125	0	0	17
Hong Kong	0	0	1	7	0	0	1	6
Hungary	0	0	2	2	0	0	2	0
India	12,700	25,000	1,300	38,024	24,000	0	2,000	12,024
Indonesia	1	2	2,300	2,663	2,200	0	5	458
Iran	100	350	475	1,075	850	0	0	225
Iraq	10	15	20	50	40	0	0	10
Ireland	0	0	1	1	1	0	0	0
Israel	5	40	1	77	1	0	65	11
Italy	0	0	155	172	145	0	5	22
Japan	0	0	180	202	180	0	0	22
Kazakhstan	120	270	2	441	60	0	225	156
Kenya	10	5	30	45	35	0	0	10
Korea, North	19	55	25	105	80	0	0	25
Korea, South	0	0	525	643	525	0	2	116
Kyrgyzstan	20	95	0	110	20	0	75	15
Latvia	0	0	5	7	5	0	0	2
Lebanon	0	0	1	2	1	0	0	1
Lesotho	0	0	75	95	75	0	0	20
Lithuania	0	0	0	0	0	0	0	0
North Macedonia	0	0	2	3	2	0	0	1
Madagascar	20	30	0	45	20	0	10	15

Table 05 Cotton Supply and Distribution MY 2023/24 (Continued)
(1,000 HA and 1000 480-lb. Bales)

Country	Area Harvested	Production	Imports	Total Supply	Domestic Use	Loss	Exports	Ending Stocks
Malawi	80	90	0	184	20	0	70	94
Malaysia	0	0	500	1,724	325	0	100	1,299
Mali	700	1,250	0	1,511	25	0	1,150	336
Mauritius	0	0	100	118	100	0	0	18
Mexico	150	1,100	850	2,377	1,750	0	300	327
Moldova	0	0	40	54	40	0	0	14
Morocco	0	0	35	41	34	0	0	7
Mozambique	125	115	0	191	5	0	110	76
Netherlands	0	0	10	12	10	0	0	2
Nicaragua	0	0	105	122	100	0	0	22
Niger	5	9	0	14	0	0	9	5
Nigeria	270	350	0	459	250	0	100	109
Pakistan	2,600	6,500	4,200	12,225	10,000	0	75	2,150
Panama	0	0	1	1	1	0	0	0
Paraguay	27	100	0	205	30	0	80	95
Peru	11	50	230	339	275	0	2	62
Philippines	1	2	35	49	40	0	0	9
Poland	0	0	30	34	30	0	0	4
Portugal	0	0	160	191	150	0	10	31
Romania	0	0	1	2	1	0	0	1
Russia	0	0	85	101	75	0	10	16
Senegal	18	33	0	43	0	0	35	8
Serbia	0	0	5	6	5	0	0	1
Singapore	0	0	0	0	0	0	0	0
Slovakia	0	0	1	1	1	0	0	0
Slovenia	0	0	6	7	6	0	0	1
Somalia	12	7	3	11	10	0	0	1
South Africa	18	70	70	196	80	0	70	46
Spain	48	165	15	244	15	0	175	54
Sri Lanka	5	5	2	9	7	0	0	2
Sudan	200	600	0	834	70	0	550	214
Sweden	0	0	0	0	0	0	0	0
Switzerland	0	0	2	3	2	0	0	1
Syria	25	130	0	264	75	0	75	114
Taiwan	0	0	260	325	260	0	0	65

Table 05 Cotton Supply and Distribution MY 2023/24 (Continued)
(1,000 HA and 1000 480-lb. Bales)

Country	Area Harvested	Production	Imports	Total Supply	Domestic Use	Loss	Exports	Ending Stocks
Tajikistan	170	500	0	739	110	0	400	229
Tanzania	465	470	0	636	125	0	275	236
Thailand	1	2	725	865	725	0	1	139
Togo	90	115	0	167	0	0	115	52
Tunisia	0	0	25	31	25	0	0	6
Turkey	440	3,500	4,400	10,529	8,000	0	500	2,029
Turkmenistan	550	900	0	1,614	750	0	150	714
Uganda	100	170	0	292	15	0	150	127
Ukraine	0	0	1	1	1	0	0	0
United Kingdom	0	0	0	1	1	0	0	0
United States	3,246	12,817	5	17,072	2,150	-78	12,200	2,800
Uruguay	0	0	0	0	0	0	0	0
Uzbekistan	1,030	2,900	100	4,740	3,200	0	25	1,515
Venezuela	15	85	10	118	95	0	0	23
Vietnam	1	3	6,900	7,949	6,900	0	0	1,049
Yemen	9	16	0	18	13	0	3	2
Zambia	40	45	0	188	5	0	45	138
Zimbabwe	240	215	0	530	40	0	200	290
World								
World	31,942	112,603	43,229	238,667	115,786	-278	43,235	79,924

Table 05A Cotton Supply and Distribution MY 2023/24
(1000 MT and 1000 HA)

Country	Area Harvested	Production	Imports	Total Supply	Domestic Use	Loss	Exports	Ending Stocks
Afghanistan	95	44	0	47	3	0	38	6
Albania	1	0	0	0	0	0	0	0
Algeria	0	0	9	13	9	0	0	4
Angola	3	1	0	2	1	0	0	1
Argentina	450	278	0	729	158	0	152	418
Armenia	0	0	0	0	0	0	0	0
Australia	465	1,110	0	2,151	2	-44	1,241	951
Austria	0	0	3	3	3	0	0	0
Azerbaijan	110	113	0	164	11	0	109	44
Bahrain	0	0	7	7	6	0	0	1
Bangladesh	46	34	1,676	2,131	1,676	0	0	454
Belarus	0	0	3	4	3	0	0	1
Belgium-Luxembourg	0	0	4	5	3	0	1	1
Benin	530	256	0	308	3	0	245	59
Bolivia	4	2	0	4	3	0	0	2
Brazil	1,660	3,170	4	4,427	718	0	2,569	1,140
Bulgaria	2	2	2	6	4	0	0	2
Burkina Faso	490	152	0	175	3	0	152	20
Burma	155	102	0	126	87	0	20	20
Cambodia	0	0	0	0	0	0	0	0
Cameroon	245	142	0	191	4	0	136	51
Canada	0	0	0	0	0	0	0	0
Central African Republic	34	8	0	12	0	0	8	4
Chad	215	41	0	69	2	0	46	21
Chile	0	0	0	0	0	0	0	0
China	2,900	5,879	2,177	16,199	8,165	0	22	8,013
Colombia	11	10	12	27	22	0	0	5
Congo (Kinshasa)	30	3	0	5	4	0	0	1
Costa Rica	0	0	13	15	12	0	0	3
Cote d'Ivoire	390	165	0	190	2	0	158	30
Croatia	0	0	0	0	0	0	0	0
Cuba	4	1	1	2	2	0	0	0
Cyprus	0	0	0	0	0	0	0	0
Czech Republic	0	0	1	1	1	0	0	0
Denmark	0	0	0	0	0	0	0	0

Table 05A Cotton Supply and Distribution MY 2023/24 (Continued)
(1000 MT and 1000 HA)

Country	Area Harvested	Production	Imports	Total Supply	Domestic Use	Loss	Exports	Ending Stocks
Dominican Republic	0	0	0	1	0	0	0	0
Ecuador	3	2	12	16	13	0	0	3
Egypt	110	76	103	222	109	0	71	42
El Salvador	0	0	48	57	46	0	0	11
Estonia	0	0	3	3	3	0	0	1
Ethiopia	55	39	0	57	38	0	1	18
France	0	0	9	10	9	0	0	2
Germany	0	0	16	19	15	0	1	3
Ghana	15	6	0	8	3	0	3	1
Greece	200	207	7	263	15	0	218	30
Guatemala	2	1	44	52	44	0	0	9
Guinea	13	4	0	5	0	0	4	1
Haiti	7	1	0	1	1	0	0	0
Honduras	0	0	27	31	27	0	0	4
Hong Kong	0	0	0	2	0	0	0	1
Hungary	0	0	0	0	0	0	0	0
India	12,700	5,443	283	8,279	5,225	0	435	2,618
Indonesia	1	0	501	580	479	0	1	100
Iran	100	76	103	234	185	0	0	49
Iraq	10	3	4	11	9	0	0	2
Ireland	0	0	0	0	0	0	0	0
Israel	5	9	0	17	0	0	14	2
Italy	0	0	34	37	32	0	1	5
Japan	0	0	39	44	39	0	0	5
Kazakhstan	120	59	0	96	13	0	49	34
Kenya	10	1	7	10	8	0	0	2
Korea, North	19	12	5	23	17	0	0	5
Korea, South	0	0	114	140	114	0	0	25
Kyrgyzstan	20	21	0	24	4	0	16	3
Latvia	0	0	1	2	1	0	0	0
Lebanon	0	0	0	0	0	0	0	0
Lesotho	0	0	16	21	16	0	0	4
Lithuania	0	0	0	0	0	0	0	0
North Macedonia	0	0	0	1	0	0	0	0
Madagascar	20	7	0	10	4	0	2	3

Table 05A Cotton Supply and Distribution MY 2023/24 (Continued)
(1000 MT and 1000 HA)

Country	Area Harvested	Production	Imports	Total Supply	Domestic Use	Loss	Exports	Ending Stocks
Malawi	80	20	0	40	4	0	15	20
Malaysia	0	0	109	375	71	0	22	283
Mali	700	272	0	329	5	0	250	73
Mauritius	0	0	22	26	22	0	0	4
Mexico	150	239	185	518	381	0	65	71
Moldova	0	0	9	12	9	0	0	3
Morocco	0	0	8	9	7	0	0	2
Mozambique	125	25	0	42	1	0	24	17
Netherlands	0	0	2	3	2	0	0	0
Nicaragua	0	0	23	27	22	0	0	5
Niger	5	2	0	3	0	0	2	1
Nigeria	270	76	0	100	54	0	22	24
Pakistan	2,600	1,415	914	2,662	2,177	0	16	468
Panama	0	0	0	0	0	0	0	0
Paraguay	27	22	0	45	7	0	17	21
Peru	11	11	50	74	60	0	0	13
Philippines	1	0	8	11	9	0	0	2
Poland	0	0	7	7	7	0	0	1
Portugal	0	0	35	42	33	0	2	7
Romania	0	0	0	0	0	0	0	0
Russia	0	0	19	22	16	0	2	3
Senegal	18	7	0	9	0	0	8	2
Serbia	0	0	1	1	1	0	0	0
Singapore	0	0	0	0	0	0	0	0
Slovakia	0	0	0	0	0	0	0	0
Slovenia	0	0	1	2	1	0	0	0
Somalia	12	2	1	2	2	0	0	0
South Africa	18	15	15	43	17	0	15	10
Spain	48	36	3	53	3	0	38	12
Sri Lanka	5	1	0	2	2	0	0	0
Sudan	200	131	0	182	15	0	120	47
Sweden	0	0	0	0	0	0	0	0
Switzerland	0	0	0	1	0	0	0	0
Syria	25	28	0	57	16	0	16	25
Taiwan	0	0	57	71	57	0	0	14

Table 05A Cotton Supply and Distribution MY 2023/24 (Continued)
(1000 MT and 1000 HA)

Country	Area Harvested	Production	Imports	Total Supply	Domestic Use	Loss	Exports	Ending Stocks
Tajikistan	170	109	0	161	24	0	87	50
Tanzania	465	102	0	138	27	0	60	51
Thailand	1	0	158	188	158	0	0	30
Togo	90	25	0	36	0	0	25	11
Tunisia	0	0	5	7	5	0	0	1
Turkey	440	762	958	2,292	1,742	0	109	442
Turkmenistan	550	196	0	351	163	0	33	155
Uganda	100	37	0	64	3	0	33	28
Ukraine	0	0	0	0	0	0	0	0
United Kingdom	0	0	0	0	0	0	0	0
United States	3,246	2,791	1	3,717	468	-17	2,656	610
Uruguay	0	0	0	0	0	0	0	0
Uzbekistan	1,030	631	22	1,032	697	0	5	330
Venezuela	15	19	2	26	21	0	0	5
Vietnam	1	1	1,502	1,731	1,502	0	0	228
Yemen	9	3	0	4	3	0	1	0
Zambia	40	10	0	41	1	0	10	30
Zimbabwe	240	47	0	115	9	0	44	63
World								
World	31,942	24,517	9,412	51,964	25,210	-61	9,413	17,402

Table 06: Cotton Supply and Distribution by Country 2022/23
(1,000 HA and 1000 480-lb. Bales)

Country	Area Harvested	Production	Imports	Total Supply	Domestic Use	Loss	Exports	Ending Stocks
Afghanistan	55	115	0	132	15	0	100	17
Albania	1	1	0	2	1	0	0	1
Algeria	0	0	40	58	40	0	0	18
Angola	3	5	0	10	5	0	0	5
Argentina	512	1,475	0	2,957	700	0	186	2,071
Armenia	0	0	1	1	1	0	0	0
Australia	650	5,800	0	10,760	10	-190	6,162	4,778
Austria	0	0	1	6	4	0	1	1
Azerbaijan	110	520	0	531	50	0	250	231
Bahrain	0	0	26	32	28	0	0	4
Bangladesh	45	153	6,550	9,031	7,100	0	0	1,931
Belarus	0	0	15	20	17	0	0	3
Belgium-Luxembourg	0	0	20	25	15	0	6	4
Benin	573	1,100	0	1,253	15	0	1,000	238
Bolivia	4	10	1	19	10	0	0	9
Brazil	1,600	11,720	8	15,611	3,200	0	6,656	5,755
Bulgaria	2	10	9	26	19	0	0	7
Burkina Faso	618	775	0	871	15	0	750	106
Burma	150	450	2	551	350	0	90	111
Cambodia	0	0	2	3	2	0	0	1
Cameroon	232	600	0	824	20	0	575	229
Canada	0	0	1	1	1	0	0	0
Central African Republic	34	36	0	53	0	0	35	18
Chad	222	200	0	335	10	0	200	125
Chile	0	0	1	2	1	0	0	1
China	3,150	30,700	6,232	74,996	37,500	0	94	37,402
Colombia	9	36	44	110	90	0	0	20
Congo (Kinshasa)	30	15	2	21	17	0	0	4
Costa Rica	0	0	55	61	50	0	0	11
Cote d'Ivoire	411	445	0	603	10	0	479	114
Croatia	0	0	1	1	1	0	0	0
Cuba	4	4	5	11	9	0	0	2
Cyprus	0	0	1	1	1	0	0	0
Czech Republic	0	0	4	5	4	0	0	1
Denmark	0	0	0	0	0	0	0	0

Table 06: Cotton Supply and Distribution by Country 2022/23 (Continued)
(1,000 HA and 1000 480-lb. Bales)

Country	Area Harvested	Production	Imports	Total Supply	Domestic Use	Loss	Exports	Ending Stocks
Dominican Republic	0	0	2	3	2	0	0	1
Ecuador	3	9	32	54	45	0	0	9
Egypt	140	425	450	1,040	475	0	370	195
El Salvador	0	0	172	220	180	0	0	40
Estonia	0	0	15	18	14	0	0	4
Ethiopia	54	180	0	238	150	0	5	83
France	0	0	34	41	32	0	2	7
Germany	0	0	76	90	72	0	4	14
Ghana	15	28	0	34	13	0	13	8
Greece	255	1,450	30	1,630	70	0	1,331	229
Guatemala	2	3	187	228	190	0	0	38
Guinea	13	18	0	21	0	0	18	3
Haiti	7	5	0	6	5	0	0	1
Honduras	0	0	115	127	110	0	0	17
Hong Kong	0	0	0	6	0	0	0	6
Hungary	0	0	1	1	0	0	1	0
India	13,000	26,000	1,727	36,323	23,500	0	1,099	11,724
Indonesia	1	2	1,664	2,128	1,750	0	17	361
Iran	100	400	451	1,100	850	0	0	250
Iraq	10	15	20	50	35	0	0	15
Ireland	0	0	1	1	1	0	0	0
Israel	8	70	2	77	1	0	40	36
Italy	0	0	124	148	125	0	6	17
Japan	0	0	170	192	170	0	0	22
Kazakhstan	125	335	2	500	60	0	271	169
Kenya	10	5	35	50	40	0	0	10
Korea, North	19	55	25	105	80	0	0	25
Korea, South	0	0	440	561	440	0	3	118
Kyrgyzstan	20	95	0	110	15	0	80	15
Latvia	0	0	3	6	3	0	1	2
Lebanon	0	0	1	2	1	0	0	1
Lesotho	0	0	75	100	80	0	0	20
Lithuania	0	0	0	0	0	0	0	0
North Macedonia	0	0	2	3	2	0	0	1
Madagascar	20	30	0	45	20	0	10	15

Table 06: Cotton Supply and Distribution by Country 2022/23 (Continued)
(1,000 HA and 1000 480-lb. Bales)

Country	Area Harvested	Production	Imports	Total Supply	Domestic Use	Loss	Exports	Ending Stocks
Malawi	80	90	0	174	20	0	60	94
Malaysia	0	0	687	1,550	300	0	26	1,224
Mali	596	735	0	1,036	25	0	750	261
Mauritius	0	0	86	108	90	0	0	18
Mexico	200	1,580	689	2,584	1,750	0	407	427
Moldova	0	0	35	49	35	0	0	14
Morocco	0	0	27	35	29	0	0	6
Mozambique	125	115	0	191	5	0	110	76
Netherlands	0	0	1	9	5	0	2	2
Nicaragua	0	0	80	102	85	0	0	17
Niger	5	9	0	14	0	0	9	5
Nigeria	270	350	0	459	250	0	100	109
Pakistan	1,800	3,900	4,500	10,325	8,700	0	100	1,525
Panama	0	0	1	1	1	0	0	0
Paraguay	35	141	2	164	25	0	34	105
Peru	11	45	193	307	245	0	3	59
Philippines	1	2	35	49	35	0	2	12
Poland	0	0	28	32	28	0	0	4
Portugal	0	0	146	184	135	0	18	31
Romania	0	0	1	2	1	0	0	1
Russia	0	0	75	101	75	0	10	16
Senegal	17	25	0	27	0	0	17	10
Serbia	0	0	4	5	4	0	0	1
Singapore	0	0	0	0	0	0	0	0
Slovakia	0	0	0	0	0	0	0	0
Slovenia	0	0	6	8	7	0	0	1
Somalia	12	7	3	11	10	0	0	1
South Africa	21	81	60	176	70	0	50	56
Spain	52	178	15	221	15	0	142	64
Sri Lanka	5	5	2	9	6	0	1	2
Sudan	200	600	0	829	70	0	525	234
Sweden	0	0	0	0	0	0	0	0
Switzerland	0	0	2	3	2	0	0	1
Syria	25	130	0	289	75	0	80	134
Taiwan	0	0	245	319	250	0	4	65

Table 06: Cotton Supply and Distribution by Country 2022/23 (Continued)
(1,000 HA and 1000 480-lb. Bales)

Country	Area Harvested	Production	Imports	Total Supply	Domestic Use	Loss	Exports	Ending Stocks
Tajikistan	170	480	0	679	90	0	350	239
Tanzania	360	305	0	466	100	0	200	166
Thailand	1	2	662	813	675	0	0	138
Togo	66	90	0	132	0	0	80	52
Tunisia	0	0	20	28	22	0	0	6
Turkey	555	4,900	4,189	11,004	7,500	15	860	2,629
Turkmenistan	550	900	0	1,564	725	0	125	714
Uganda	100	170	0	287	15	0	150	122
Ukraine	0	0	1	2	2	0	0	0
United Kingdom	0	0	1	2	1	0	0	1
United States	2,957	14,468	2	18,520	2,050	-546	12,766	4,250
Uruguay	0	0	0	0	0	0	0	0
Uzbekistan	1,070	3,300	25	4,665	2,900	0	25	1,740
Venezuela	15	85	10	118	95	0	0	23
Vietnam	1	3	6,471	7,496	6,450	0	0	1,046
Yemen	10	16	0	18	13	0	3	2
Zambia	40	45	0	186	5	0	38	143
Zimbabwe	240	215	0	455	40	0	100	315
World								
World	31,807	116,267	37,181	229,989	110,873	-721	37,002	82,835

Table 06A: Cotton Supply and Distribution by Country 2022/23
(1,000 Metric Tons)

Country	Area Harvested	Production	Imports	Domestic Use	Loss	Exports	Ending Stocks
Afghanistan	55	25	0	3	0	22	4
Albania	1	0	0	0	0	0	0
Algeria	0	0	9	9	0	0	4
Angola	3	1	0	1	0	0	1
Argentina	512	321	0	152	0	40	451
Armenia	0	0	0	0	0	0	0
Australia	650	1,263	0	2	-41	1,342	1,040
Austria	0	0	0	1	0	0	0
Azerbaijan	110	113	0	11	0	54	50
Bahrain	0	0	6	6	0	0	1
Bangladesh	45	33	1,426	1,546	0	0	420
Belarus	0	0	3	4	0	0	1
Belgium-Luxembourg	0	0	4	3	0	1	1
Benin	573	239	0	3	0	218	52
Bolivia	4	2	0	2	0	0	2
Brazil	1,600	2,552	2	697	0	1,449	1,253
Bulgaria	2	2	2	4	0	0	2
Burkina Faso	618	169	0	3	0	163	23
Burma	150	98	0	76	0	20	24
Cambodia	0	0	0	0	0	0	0
Cameroon	232	131	0	4	0	125	50
Canada	0	0	0	0	0	0	0
Central African Republic	34	8	0	0	0	8	4
Chad	222	44	0	2	0	44	27
Chile	0	0	0	0	0	0	0
China	3,150	6,684	1,357	8,165	0	20	8,143
Colombia	9	8	10	20	0	0	4
Congo (Kinshasa)	30	3	0	4	0	0	1
Costa Rica	0	0	12	11	0	0	2
Cote d'Ivoire	411	97	0	2	0	104	25
Croatia	0	0	0	0	0	0	0
Cuba	4	1	1	2	0	0	0
Cyprus	0	0	0	0	0	0	0
Czech Republic	0	0	1	1	0	0	0
Denmark	0	0	0	0	0	0	0

Table 06A: Cotton Supply and Distribution by Country 2022/23 (Continued)
(1,000 Metric Tons)

Country	Area Harvested	Production	Imports	Domestic Use	Loss	Exports	Ending Stocks
Dominican Republic	0	0	0	0	0	0	0
Ecuador	3	2	7	10	0	0	2
Egypt	140	93	98	103	0	81	42
El Salvador	0	0	37	39	0	0	9
Estonia	0	0	3	3	0	0	1
Ethiopia	54	39	0	33	0	1	18
France	0	0	7	7	0	0	2
Germany	0	0	17	16	0	1	3
Ghana	15	6	0	3	0	3	2
Greece	255	316	7	15	0	290	50
Guatemala	2	1	41	41	0	0	8
Guinea	13	4	0	0	0	4	1
Haiti	7	1	0	1	0	0	0
Honduras	0	0	25	24	0	0	4
Hong Kong	0	0	0	0	0	0	1
Hungary	0	0	0	0	0	0	0
India	13,000	5,661	376	5,117	0	239	2,553
Indonesia	1	0	362	381	0	4	79
Iran	100	87	98	185	0	0	54
Iraq	10	3	4	8	0	0	3
Ireland	0	0	0	0	0	0	0
Israel	8	15	0	0	0	9	8
Italy	0	0	27	27	0	1	4
Japan	0	0	37	37	0	0	5
Kazakhstan	125	73	0	13	0	59	37
Kenya	10	1	8	9	0	0	2
Korea, North	19	12	5	17	0	0	5
Korea, South	0	0	96	96	0	1	26
Kyrgyzstan	20	21	0	3	0	17	3
Latvia	0	0	1	1	0	0	0
Lebanon	0	0	0	0	0	0	0
Lesotho	0	0	16	17	0	0	4
Lithuania	0	0	0	0	0	0	0
North Macedonia	0	0	0	0	0	0	0
Madagascar	20	7	0	4	0	2	3

Table 06A: Cotton Supply and Distribution by Country 2022/23 (Continued)
(1,000 Metric Tons)

Country	Area Harvested	Production	Imports	Domestic Use	Loss	Exports	Ending Stocks
Malawi	80	20	0	4	0	13	20
Malaysia	0	0	150	65	0	6	266
Mali	596	160	0	5	0	163	57
Mauritius	0	0	19	20	0	0	4
Mexico	200	344	150	381	0	89	93
Moldova	0	0	8	8	0	0	3
Morocco	0	0	6	6	0	0	1
Mozambique	125	25	0	1	0	24	17
Netherlands	0	0	0	1	0	0	0
Nicaragua	0	0	17	19	0	0	4
Niger	5	2	0	0	0	2	1
Nigeria	270	76	0	54	0	22	24
Pakistan	1,800	849	980	1,894	0	22	332
Panama	0	0	0	0	0	0	0
Paraguay	35	31	0	5	0	7	23
Peru	11	10	42	53	0	1	13
Philippines	1	0	8	8	0	0	3
Poland	0	0	6	6	0	0	1
Portugal	0	0	32	29	0	4	7
Romania	0	0	0	0	0	0	0
Russia	0	0	16	16	0	2	3
Senegal	17	5	0	0	0	4	2
Serbia	0	0	1	1	0	0	0
Singapore	0	0	0	0	0	0	0
Slovakia	0	0	0	0	0	0	0
Slovenia	0	0	1	2	0	0	0
Somalia	12	2	1	2	0	0	0
South Africa	21	18	13	15	0	11	12
Spain	52	39	3	3	0	31	14
Sri Lanka	5	1	0	1	0	0	0
Sudan	200	131	0	15	0	114	51
Sweden	0	0	0	0	0	0	0
Switzerland	0	0	0	0	0	0	0
Syria	25	28	0	16	0	17	29
Taiwan	0	0	53	54	0	1	14

Table 06A: Cotton Supply and Distribution by Country 2022/23 (Continued)
(1,000 Metric Tons)

Country	Area Harvested	Production	Imports	Domestic Use	Loss	Exports	Ending Stocks
Tajikistan	170	105	0	20	0	76	52
Tanzania	360	66	0	22	0	44	36
Thailand	1	0	144	147	0	0	30
Togo	66	20	0	0	0	17	11
Tunisia	0	0	4	5	0	0	1
Turkey	555	1,067	912	1,633	3	187	572
Turkmenistan	550	196	0	158	0	27	155
Uganda	100	37	0	3	0	33	27
Ukraine	0	0	0	0	0	0	0
United Kingdom	0	0	0	0	0	0	0
United States	2,957	3,150	0	446	-119	2,779	925
Uruguay	0	0	0	0	0	0	0
Uzbekistan	1,070	718	5	631	0	5	379
Venezuela	15	19	2	21	0	0	5
Vietnam	1	1	1,409	1,404	0	0	228
Yemen	10	3	0	3	0	1	0
Zambia	40	10	0	1	0	8	31
Zimbabwe	240	47	0	9	0	22	69
World							
World	31,807	25,314	8,095	24,140	-157	8,056	18,035

Table 09: World Cotton Supply and Distribution
(1,000 HA and 1000 480-lb. Bales)

Country Mktg Year	Beginning Stocks	Area Harvested	Production	Imports	Total Supply	Exports	Domestic Use	Loss	Ending Stocks	Stock to Use %
World										
1992/93	37,060	32,614	82,306	27,067	146,433	25,435	86,337	63	34,598	40
1993/94	34,598	30,711	77,676	27,917	140,191	26,620	85,510	143	27,918	33
1994/95	27,918	32,185	86,100	30,350	144,368	28,018	84,622	-330	32,058	38
1995/96	32,058	35,902	93,733	27,004	152,795	27,296	85,940	-544	40,103	47
1996/97	40,103	33,760	89,908	28,579	158,590	26,602	87,961	-585	44,612	51
1997/98	44,612	33,795	92,294	25,929	162,835	26,777	87,222	-581	49,417	57
1998/99	49,417	32,884	85,974	24,480	159,871	23,507	84,668	-1,114	52,810	62
1999/00	52,810	32,350	87,888	27,993	168,691	27,126	91,047	-602	51,120	56
2000/01	51,120	31,936	88,506	26,209	165,835	26,156	92,040	-1,424	49,063	53
2001/02	49,063	33,785	99,317	29,297	177,677	29,081	94,388	-781	54,989	58
2002/03	54,989	30,732	90,681	30,188	175,858	30,400	98,437	-804	47,825	49
2003/04	47,825	31,879	94,407	34,150	176,382	33,072	98,088	-909	46,131	47
2004/05	46,131	35,572	121,584	33,965	201,680	34,949	109,203	-1,245	58,773	54
2005/06	58,773	35,043	117,552	44,668	220,993	44,922	116,943	-1,816	60,944	52
2006/07	60,944	34,334	120,449	38,305	219,698	37,416	124,201	-1,738	59,819	48
2007/08	59,819	32,898	119,738	39,454	219,011	38,868	123,836	-2,142	58,449	47
2008/09	58,449	30,522	109,947	30,523	198,919	30,207	110,348	-1,539	59,903	54
2009/10	59,903	30,194	103,250	36,918	200,071	35,804	119,522	-80	44,825	38
2010/11	44,825	33,227	113,687	36,438	194,950	34,889	115,518	32	44,511	39
2011/12	44,511	36,008	127,703	45,448	217,662	45,945	103,932	-327	68,112	66
2012/13	68,112	34,765	126,376	47,494	241,982	46,300	107,902	-477	88,257	82
2013/14	88,257	32,570	118,697	41,423	248,377	41,228	109,549	-38	97,638	89
2014/15	97,638	33,949	120,077	36,513	254,228	36,223	112,485	208	105,312	94
2015/16	105,312	30,790	97,681	35,616	238,609	34,888	113,397	89	90,235	80
2016/17	90,235	29,886	106,358	37,771	234,364	38,116	116,844	-64	79,468	68
2017/18	79,468	33,414	122,233	41,362	243,063	41,608	123,326	-195	78,324	64
2018/19	78,324	32,700	114,613	42,388	235,325	41,640	119,643	-163	74,205	62
2019/20	74,205	34,508	119,178	40,524	233,907	41,210	104,942	-166	87,921	84
2020/21	87,921	31,660	114,173	48,541	250,635	49,002	124,023	-142	77,752	63
2021/22	77,752	32,326	114,648	42,712	235,112	43,242	115,927	-598	76,541	66
2022/23	76,541	31,807	116,267	37,181	229,989	37,002	110,873	-721	82,835	75
2023/24	82,835	31,942	112,603	43,229	238,667	43,235	115,786	-278	79,924	69

Table 10: United States Cotton Supply and Distribution
(1,000 HA and 1000 480-lb. Bales)

Country Mktg Year	Area Harvested	Yield	Beginning Stocks	Production	Imports	Total Supply	Exports	Domestic Use	Loss	Ending Stocks	Stock to Use %
United States											
1992/93	4,501	785	3,704	16,218	1	19,923	5,201	10,250	-190	4,662	30
1993/94	5,173	679	4,662	16,134	6	20,802	6,862	10,418	-8	3,530	20
1994/95	5,391	794	3,530	19,662	20	23,212	9,402	11,198	-38	2,650	13
1995/96	6,478	602	2,650	17,900	408	20,958	7,675	10,647	27	2,609	14
1996/97	5,216	791	2,609	18,942	403	21,954	6,865	11,126	-8	3,971	22
1997/98	5,425	754	3,971	18,793	13	22,777	7,500	11,349	41	3,887	21
1998/99	4,324	701	3,887	13,918	439	18,244	4,298	10,401	-394	3,939	27
1999/00	5,433	680	3,939	16,968	97	21,004	6,750	10,194	145	3,915	23
2000/01	5,282	708	3,915	17,188	16	21,119	6,740	8,862	-483	6,000	38
2001/02	5,596	790	6,000	20,303	21	26,324	11,000	7,696	180	7,448	40
2002/03	5,025	746	7,448	17,209	67	24,724	11,900	7,273	166	5,385	28
2003/04	4,858	818	5,385	18,255	45	23,685	13,758	6,266	211	3,450	17
2004/05	5,284	958	3,450	23,251	29	26,730	14,436	6,691	108	5,495	26
2005/06	5,586	931	5,495	23,890	28	29,413	17,673	5,871	-200	6,069	26
2006/07	5,152	912	6,069	21,588	19	27,676	12,959	4,935	303	9,479	53
2007/08	4,245	985	9,479	19,207	12	28,698	13,634	4,584	429	10,051	55
2008/09	3,063	912	10,051	12,825	0	22,876	13,261	3,541	-263	6,337	38
2009/10	3,049	870	6,337	12,183	0	18,520	12,037	3,550	-14	2,947	19
2010/11	4,330	910	2,947	18,102	9	21,058	14,376	3,900	182	2,600	14
2011/12	3,829	886	2,600	15,573	19	18,192	11,714	3,300	-172	3,350	22
2012/13	3,772	999	3,350	17,314	10	20,674	13,026	3,500	348	3,800	23
2013/14	3,051	921	3,800	12,909	13	16,722	10,530	3,550	292	2,350	17
2014/15	3,785	939	2,350	16,319	12	18,681	11,246	3,575	210	3,650	25
2015/16	3,268	859	3,650	12,888	33	16,571	9,153	3,450	168	3,800	30
2016/17	3,848	972	3,800	17,170	7	20,977	14,917	3,250	60	2,750	15
2017/18	4,492	1,014	2,750	20,923	3	23,676	16,281	3,225	-30	4,200	22
2018/19	4,043	989	4,200	18,367	3	22,570	14,833	2,975	-88	4,850	27
2019/20	4,653	932	4,850	19,913	3	24,766	15,512	2,150	-146	7,250	41
2020/21	3,325	957	7,250	14,608	2	21,860	16,352	2,400	-42	3,150	17
2021/22	4,157	918	3,150	17,523	5	20,678	14,481	2,550	-403	4,050	24
2022/23	2,957	1,065	4,050	14,468	2	18,520	12,766	2,050	-546	4,250	29
2023/24	3,246	860	4,250	12,817	5	17,072	12,200	2,150	-78	2,800	20

Table 11: Foreign Cotton Supply and Distribution
(1,000 HA and 1000 480-lb. Bales)

Country Mktg Year	Area Harvested	Yield	Beginning Stocks	Production	Imports	Total Supply	Exports	Domestic Use	Loss	Ending Stocks
Total Foreign										
1993/94	25,538	525	29,936	61,542	27,911	119,389	19,758	75,092	151	24,388
1994/95	26,794	540	24,388	66,438	30,330	121,156	18,616	73,424	-292	29,408
1995/96	29,424	561	29,408	75,833	26,596	131,837	19,621	75,293	-571	37,494
1996/97	28,544	541	37,494	70,966	28,176	136,636	19,737	76,835	-577	40,641
1997/98	28,370	564	40,641	73,501	25,916	140,058	19,277	75,873	-622	45,530
1998/99	28,560	549	45,530	72,056	24,041	141,627	19,209	74,267	-720	48,871
1999/00	26,917	574	48,871	70,920	27,896	147,687	20,376	80,853	-747	47,205
2000/01	26,654	583	47,205	71,318	26,193	144,716	19,416	83,178	-941	43,063
2001/02	28,189	610	43,063	79,014	29,276	151,353	18,081	86,692	-961	47,541
2002/03	25,707	622	47,541	73,472	30,121	151,134	18,500	91,164	-970	42,440
2003/04	27,021	614	42,440	76,152	34,105	152,697	19,314	91,822	-1,120	42,681
2004/05	30,288	707	42,681	98,333	33,936	174,950	20,513	102,512	-1,353	53,278
2005/06	29,457	692	53,278	93,662	44,640	191,580	27,249	111,072	-1,616	54,875
2006/07	29,182	738	54,875	98,861	38,286	192,022	24,457	119,266	-2,041	50,340
2007/08	28,653	764	50,340	100,531	39,442	190,313	25,234	119,252	-2,571	48,398
2008/09	27,459	770	48,398	97,122	30,523	176,043	16,946	106,807	-1,276	53,566
2009/10	27,145	730	53,566	91,067	36,918	181,551	23,767	115,972	-66	41,878
2010/11	28,897	720	41,878	95,585	36,429	173,892	20,513	111,618	-150	41,911
2011/12	32,179	759	41,911	112,130	45,429	199,470	34,231	100,632	-155	64,762
2012/13	30,993	766	64,762	109,062	47,484	221,308	33,274	104,402	-825	84,457
2013/14	29,519	780	84,457	105,788	41,410	231,655	30,698	105,999	-330	95,288
2014/15	30,164	749	95,288	103,758	36,501	235,547	24,977	108,910	-2	101,662
2015/16	27,522	671	101,662	84,793	35,583	222,038	25,735	109,947	-79	86,435
2016/17	26,038	746	86,435	89,188	37,764	213,387	23,199	113,594	-124	76,718
2017/18	28,922	763	76,718	101,310	41,359	219,387	25,327	120,101	-165	74,124
2018/19	28,657	731	74,124	96,246	42,385	212,755	26,807	116,668	-75	69,355
2019/20	29,855	724	69,355	99,265	40,521	209,141	25,698	102,792	-20	80,671
2020/21	28,335	765	80,671	99,565	48,539	228,775	32,650	121,623	-100	74,602
2021/22	28,169	751	74,602	97,125	42,707	214,434	28,761	113,377	-195	72,491
2022/23	28,850	768	72,491	101,799	37,179	211,469	24,236	108,823	-175	78,585
2023/24	28,696	757	78,585	99,786	43,224	221,595	31,035	113,636	-200	77,124