



United States
Department of
Agriculture

Foreign
Agricultural
Service

Circular Series
WAP 7-23
July 2023

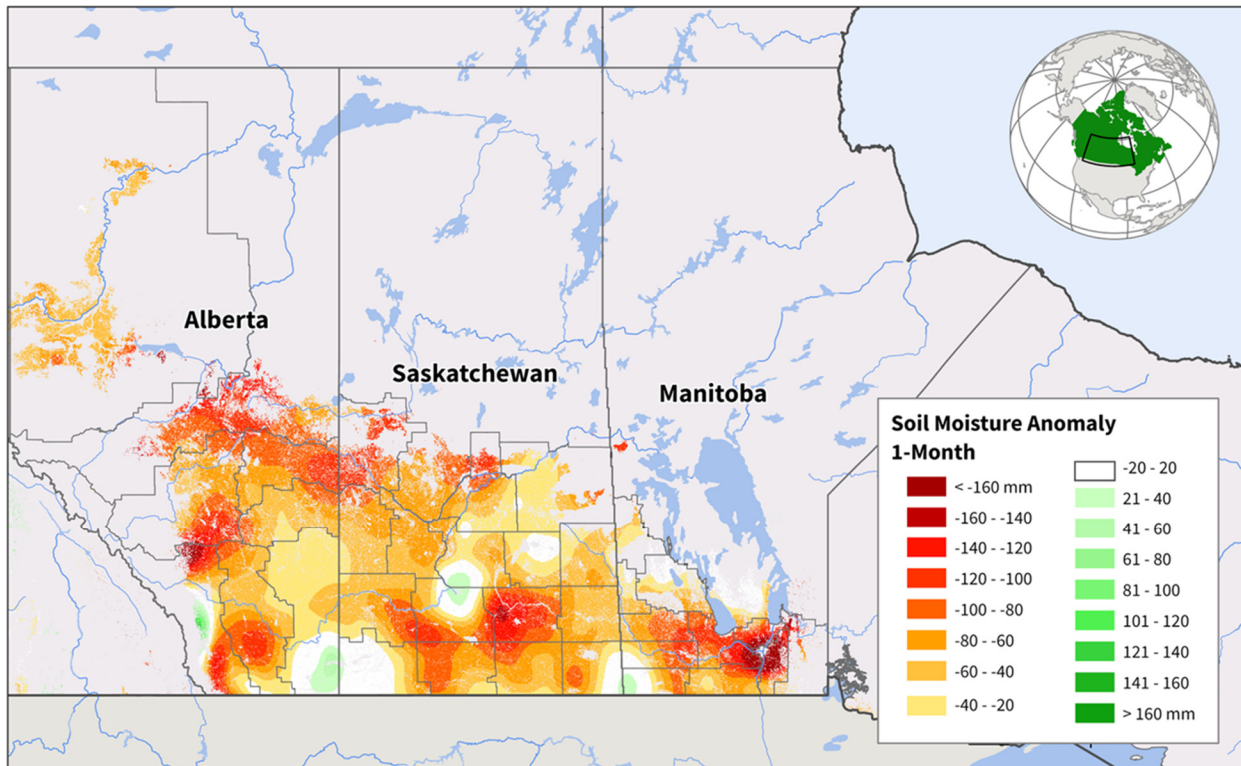
World Agricultural Production

Canada Wheat: Lower Yield Potential due to Recent Dryness in the Prairies

USDA forecasts Canada wheat production for marketing year (MY) 2023/24 at 35.0 million metric tons (mmt), down 5 percent from last month, but up 3 percent from last year and 12 percent above the 5-year average. Harvested area is estimated at 10.6 million hectares, unchanged from last month, but up 5 percent from last year and 9 percent above the 5-year average. Yield is forecast at 3.30 tons per hectare, down 5 percent from last month, slightly below last year, but 3 percent above the 5-year average.

Canada Prairies: Soil Moisture Anomaly (1-Month)

May 1 to 31, 2023

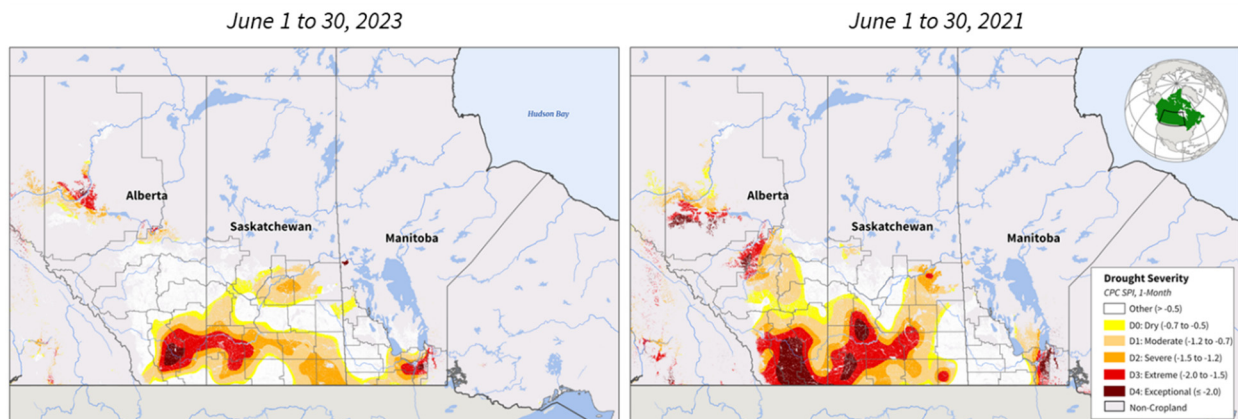


Sources: CPC 1-Month Soil Moisture Anomaly; Agriculture and Agri-Food Canada (AAFC), Annual Crop Inventory 2022 Crop Mask

Approved by the World Agricultural Outlook Board

Expectations at the beginning of the season for above-average wheat yields have given way in recent weeks, as some areas of the Prairie region experienced drier conditions. Many areas in Alberta received little rainfall in the spring and early summer, and provincial crop condition ratings are reportedly behind their 5-year averages. Conversely, crop conditions in Saskatchewan and Manitoba are generally positive, according to provincial and industry reports, boosted by more adequate early-season rainfall.

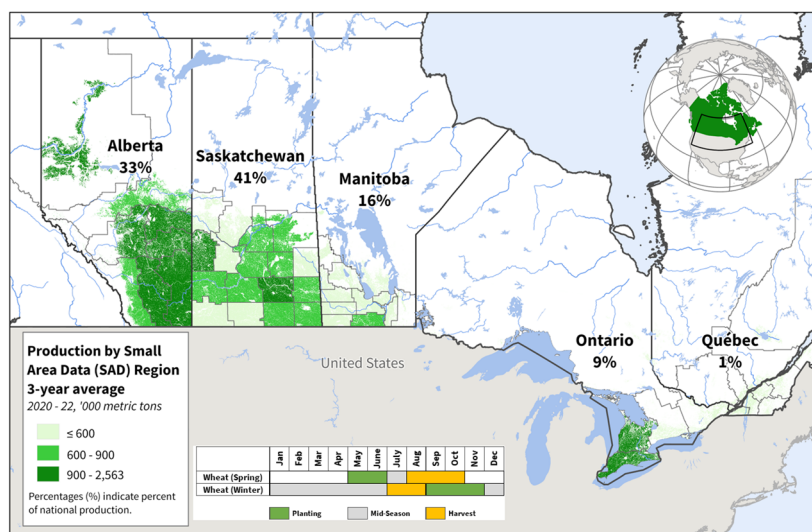
Canada Prairies: Standardized Precipitation Index (SPI)



Sources: CPC 1-Month Standardized Precipitation Index (SPI); Agriculture and Agri-Food Canada (AAFC), Annual Crop Inventory 2022 Crop Mask

The likelihood of a repeat of the 2021 drought remains small, although there are some concerns. A comparison of NOAA Climate Prediction Center’s Standardized Precipitation Indices (SPI) for the month of June reveals the presence of yield-reducing D3 and D4 drought conditions was far more widespread at the end of June 2021 than it is this year. And much of the Prairies continue to receive rainfall, including Alberta, where mid-June precipitation alleviated dryness in many areas. Yield expectations at this point of the season are best characterized as average, with the assumption of adequate rainfall throughout the remainder of the growing season.

Canada: Total Wheat Production



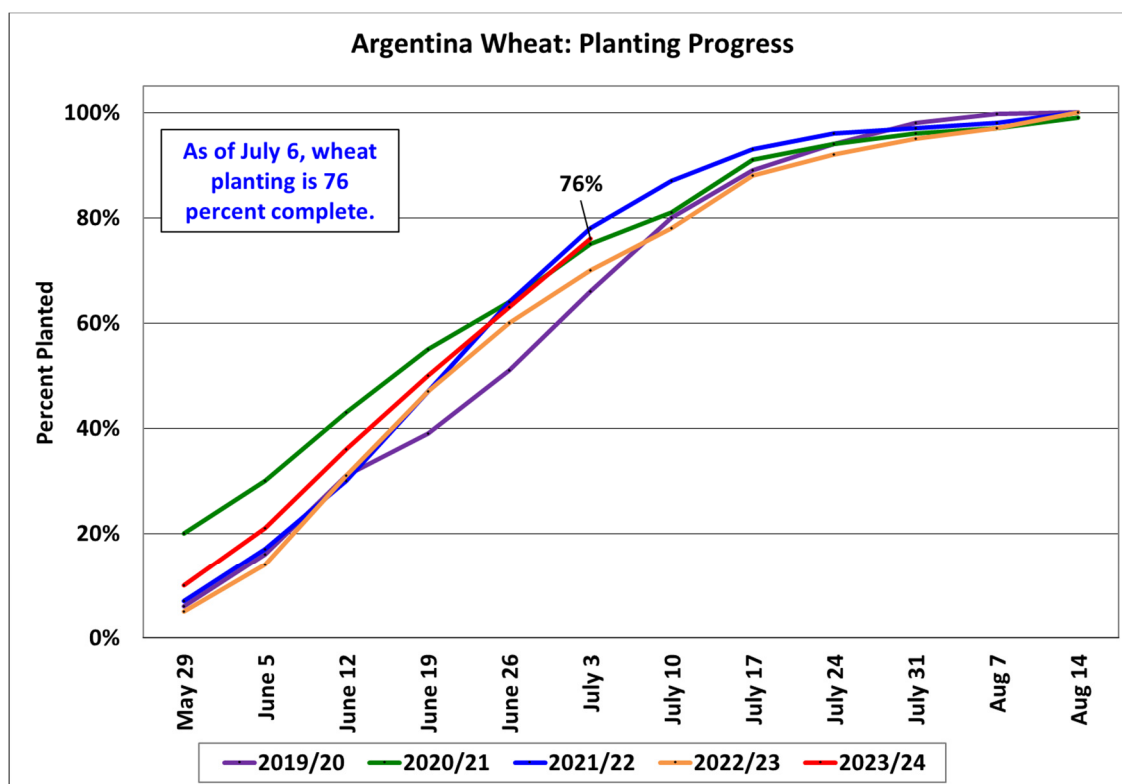
USDA Foreign Agricultural Service
 U.S. DEPARTMENT OF AGRICULTURE

Sources: Statistics Canada, Estimated Production by Small Area Data (SAD) Region; Agriculture and Agri-Food Canada (AAFC), Annual Crop Inventory 2022 Crop Mask

Statistics Canada reported wheat area planting up nearly 7 percent over 2022 in its recently released June 2023 *Field Crop Survey*. This represents a two-decade high for wheat area, owing primarily to year-over-year increases in spring wheat area in Saskatchewan (up 7 percent) and Alberta (up 4 percent). Planted area was also up 7 percent in Manitoba this year. Winter wheat area in Eastern Canada was up 20 percent over last year, though this represents only about 9 percent of the total wheat crop. Higher prices and strong export demand are cited as reasons for more wheat planting. (For more information, please contact Aaron.Mulhollen@usda.gov.)

Argentina Wheat: Production Down 2 MMT Due to Lower Planted Area

Argentina wheat production for marketing year (MY) 2023/24 is estimated at 17.5 million metric tons (mmt), down 10 percent from last month, but up 39 percent from last year. Wheat yield is estimated at 3.02 tons per hectare, up slightly from last month, and up 32 percent from last year. Harvested area is estimated at 5.8 million hectares, down 11 percent from last month, but up 5 percent from last year.

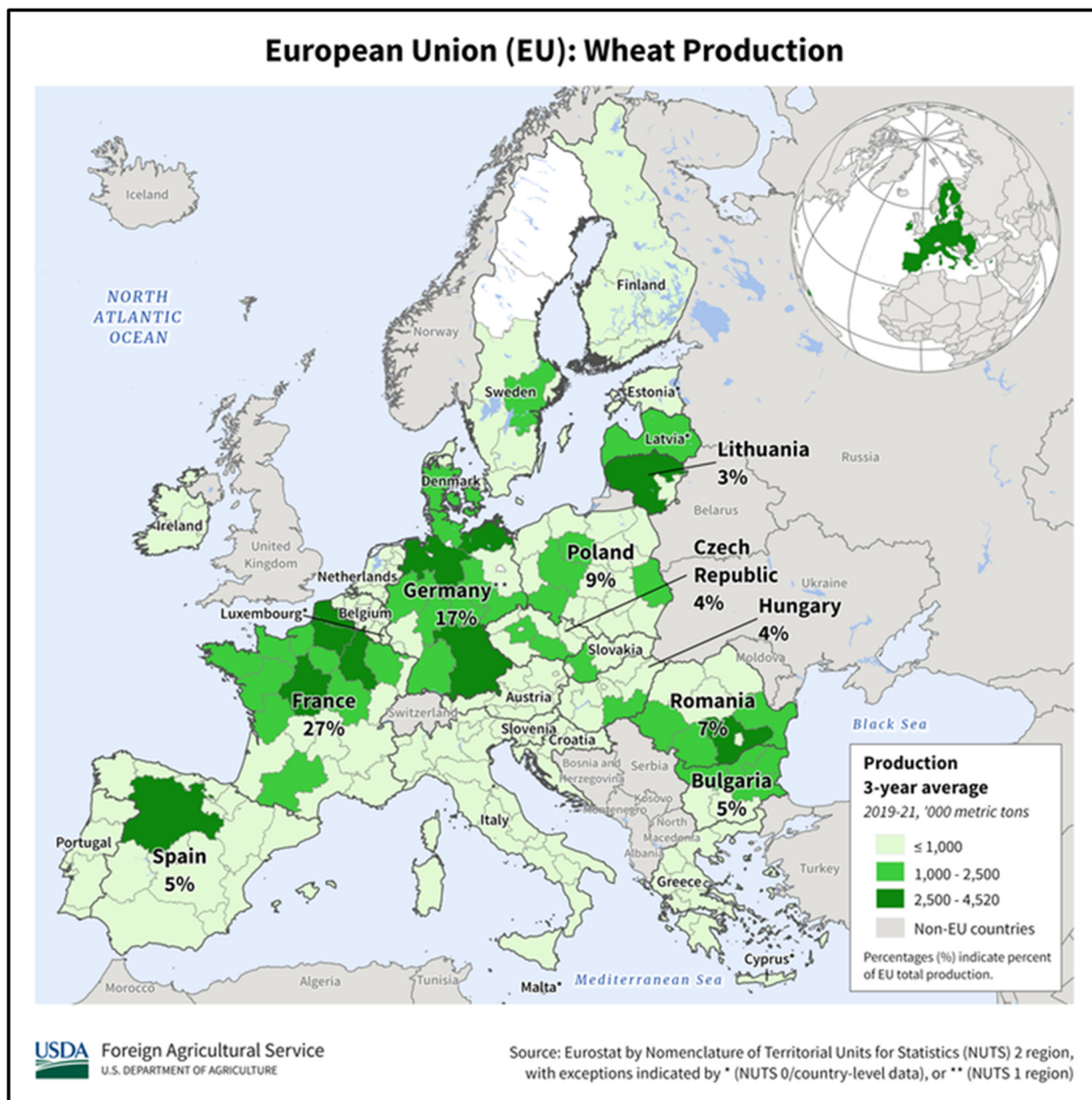


Source: Argentina Ministry of Agriculture

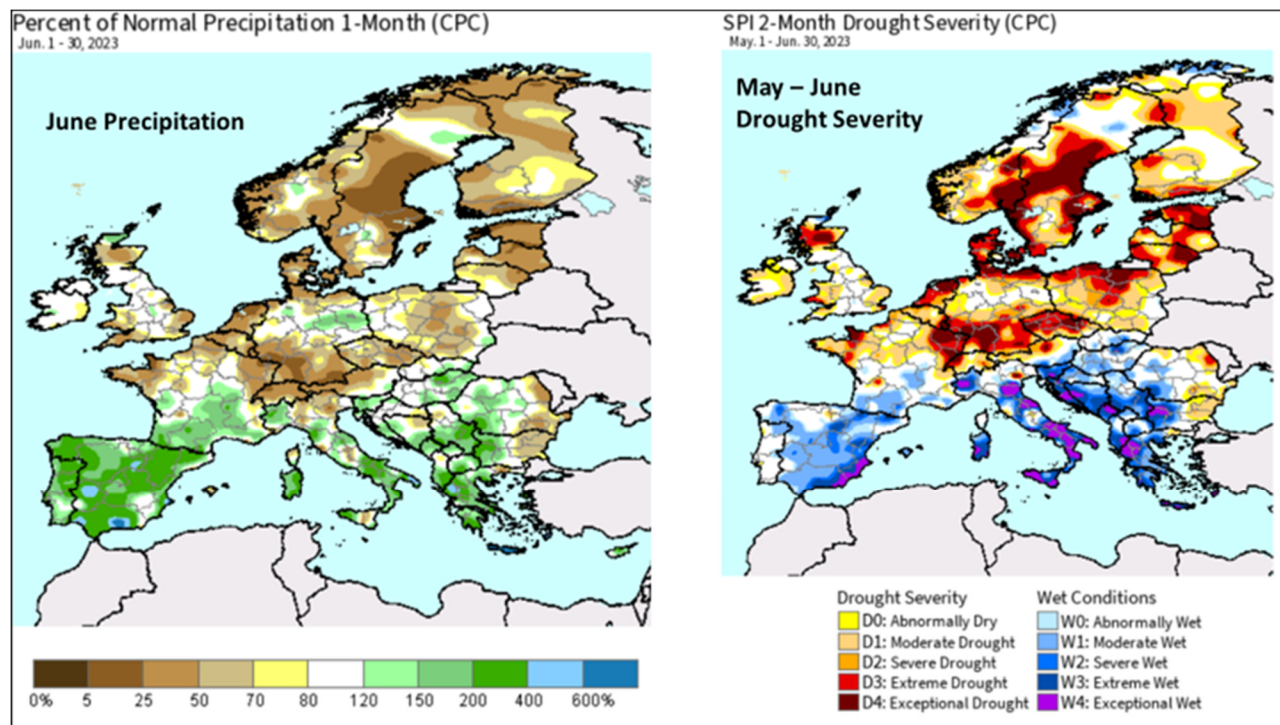
Area is down month-to-month because of an updated planted area forecast by the Argentina Ministry of Agriculture. Abandonment for MY 2023/24 is not expected to be as high as MY 2022/23, when a third year of La Niña caused increased abandonment and dry conditions throughout the growing season. Excluding years with extreme abandonment, average abandonment is about five percent. As of July 6th, wheat planting was 76 percent complete. Planting will continue until mid-August. (For more information, please contact Katie.McGaughey@usda.gov.)

European Union Wheat: Northern Dryness During Grainfill Lowers Yield

Wheat production in the European Union (EU) for marketing year (MY) 2023/2024 is estimated at 138.0 million metric tons (mmt), down 2.5 mmt (2 percent) from last month, but up 3.7 mmt (3 percent) from last year and 4 percent above the 5-year average. Harvested area is estimated at 24.4 million hectares (mha), down 80,000 hectares from June, but nearly unchanged from last year. Wheat harvested area is 2 percent above the 5-year average. Yield is estimated at 5.67 tons per hectare, 1 percent below last month's 5.75 tons per hectare, but 3 percent above last year and the 5-year-average.



Conditions in most northern areas of Europe deteriorated during June when the wheat crop was in grainfill. After increased rainfall in early spring had boosted yield expectations, hopes were dashed when a blocking high deflected rain-making storm systems away from northern Europe during May and June. Two months of dryness depleted soil moisture for the maturing crop. While damaging, extreme heat was largely confined to just southern Spain where high temperatures exacerbated the dryness.

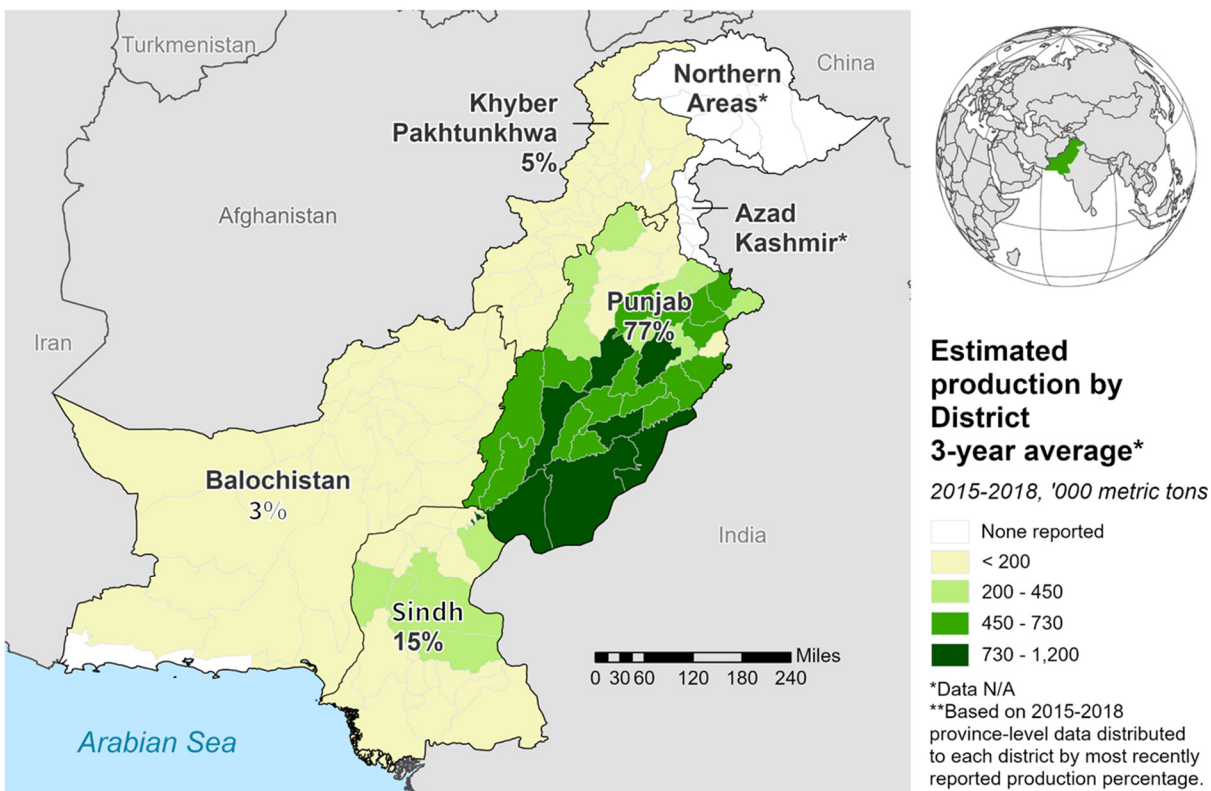


The harvest begins in the warmest areas in June, but July is when the bulk of the crop is harvested. Reductions were made to several countries this month. Most of the revisions were made to northern countries, where dryness was particularly concentrated along the Baltic Sea. The above-average rainfall that occurred in Spain during May and June was too late for much of the crop after months of dryness. Heavy rain in central Europe continued to bolster crop expectations, but it also raised questions about the quality of the crop. Production revisions include a decrease in Germany of 0.6 mmt to 21.7 mmt, a decrease in France of 0.4 mmt to 36.8 mmt, and a 0.5 mmt total reduction for the three Baltic countries of Estonia, Latvia, and Lithuania. Sweden was reduced 0.2 mmt and Denmark was reduced 0.1 mmt. Additionally, reports indicate Spain's crop to have been significantly damaged (down 0.4 mmt to 4.6 mmt), while harvested area in Italy was revised lower based on EU statistics, resulting in a production decrease (down 0.3 mmt to 7.4 mmt).

For country-specific area, yield, and production estimates within the European Union (EU), please go to PSD Online at <https://apps.fas.usda.gov/PSDOnline/app/index.html#/app/home>, and select "Downloadable Data Sets." Select the zipped file for "EU Countries Area & Production." (For more information, please contact Bryan.Purcell@usda.gov.)

Pakistan Wheat: Record Production and Yield

Pakistan: Wheat Production



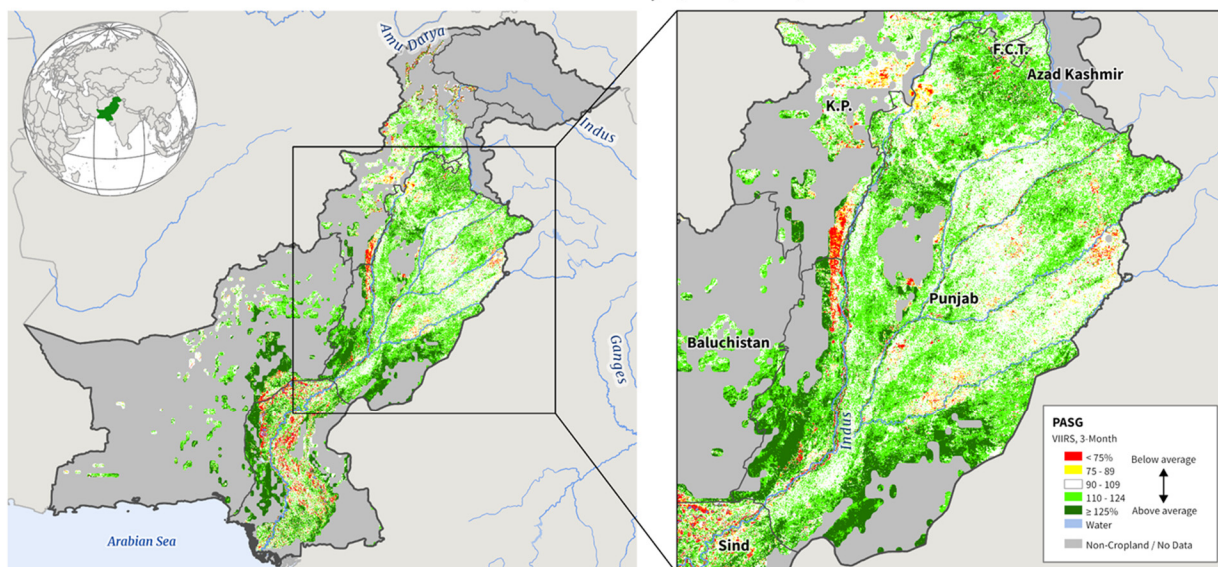
USDA Foreign Agriculture Service
Global Market Analysis
International Production Assessment Division

Source: Agricultural Marketing Information Service;
Pakistan Bureau of Statistics;
Crop Reporting Service

Pakistan wheat production for marketing year (MY) 2023/24 is estimated at a record 28.0 million metric tons, up 4 percent from last month and 6 percent from MY 2022/23. Wheat yield is estimated at a record 3.16 tons per hectare (t/ha), up 6 percent from last month and 8 percent from last year. Harvested area is estimated at 8.9 million hectares, down 2 percent from last month and last year. These figures are in accordance with the Government of Pakistan's latest estimate. This month's revision is primarily based on recent observations and reporting by USDA's Foreign Agriculture Service Office of Agricultural Affairs (FAS-OAA) in Islamabad, Pakistan.

Pakistan: Percent of Average Seasonal Greenness (PASG)

December 3, 2022 to February 25, 2023 (3-Month)



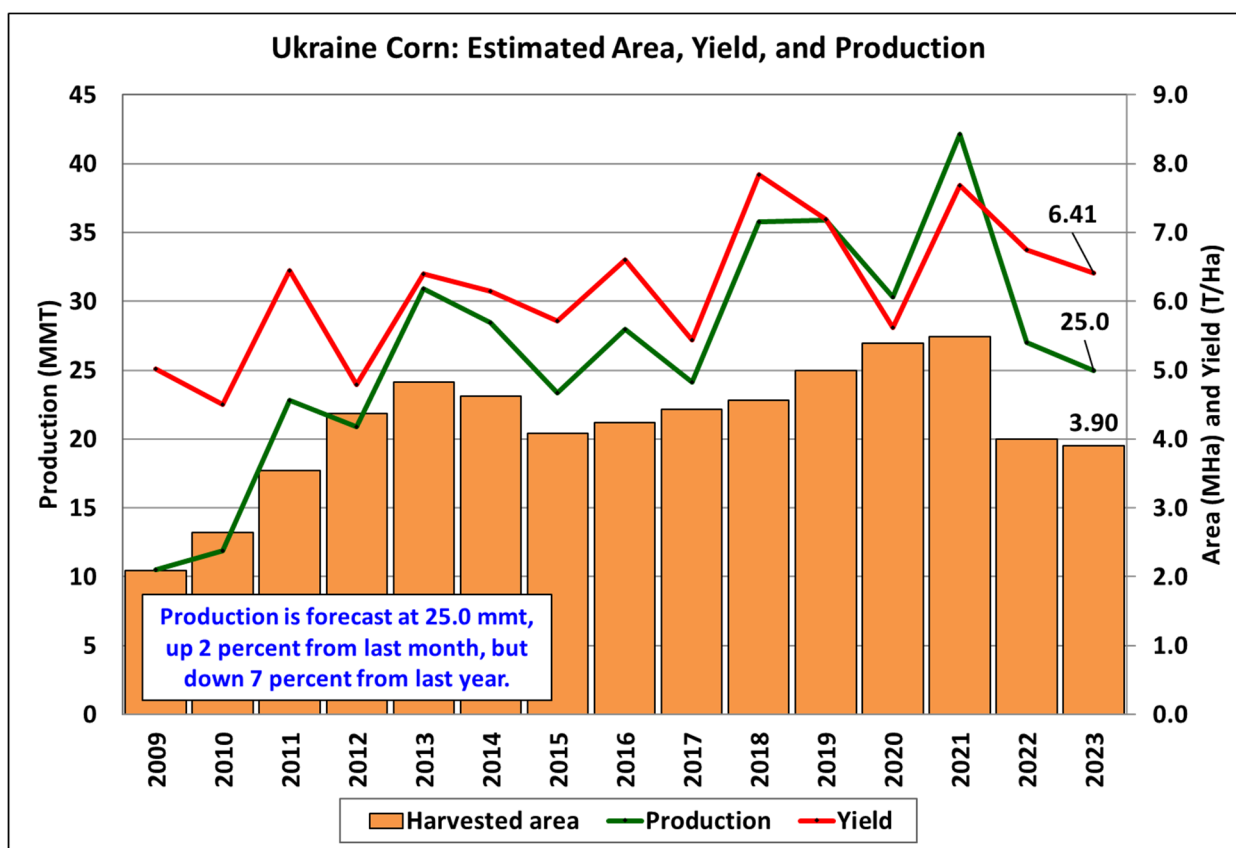
USDA Foreign Agricultural Service
U.S. DEPARTMENT OF AGRICULTURE

Sources: NASA/GSFC/GIMMS VIIRS PASG (3-Month, Dec 3, 2022 to Feb 25, 2023); International Food Policy Research Institute, Spatial Production Allocation Model (SPAM) Wheat Cropland Mask

The record yield of 3.16 tons per hectare is 5 percent higher than the previous record set in (MY) 2021/22. The higher yield is attributed to positive seasonal conditions, adequate water for irrigation, good management practices and increased application of fertilizers and herbicides. This record production was due to a significant production increase in Punjab, which produced over a million tons more than last year. The production in other provinces was almost the same as last year. Satellite-derived vegetation indices measured well above-average for the first half of the season in Punjab (77 percent of total wheat production) and Sindh (15 percent), which are the major producing states. Khyber-Pakhtunkhwa (5 percent) and Balochistan (3 percent), however, had near-average crop conditions. *(For more information, please contact James.Crutchfield@usda.gov.)*

Ukraine Corn: Farmers Plant 12 Percent More Than Initial Forecast

Ukraine corn production for marketing year 2023/24 is forecast at 25.0 million metric tons (mmt), up 2 percent from last month, but down 7 percent from last year. Yield is forecast at 6.41 tons per hectare (t/ha), essentially unchanged from last month, and down 4 percent from last year. Harvested area is forecast at 3.9 million hectares (mha), up 3 percent from last month, but down 4 percent from last year.



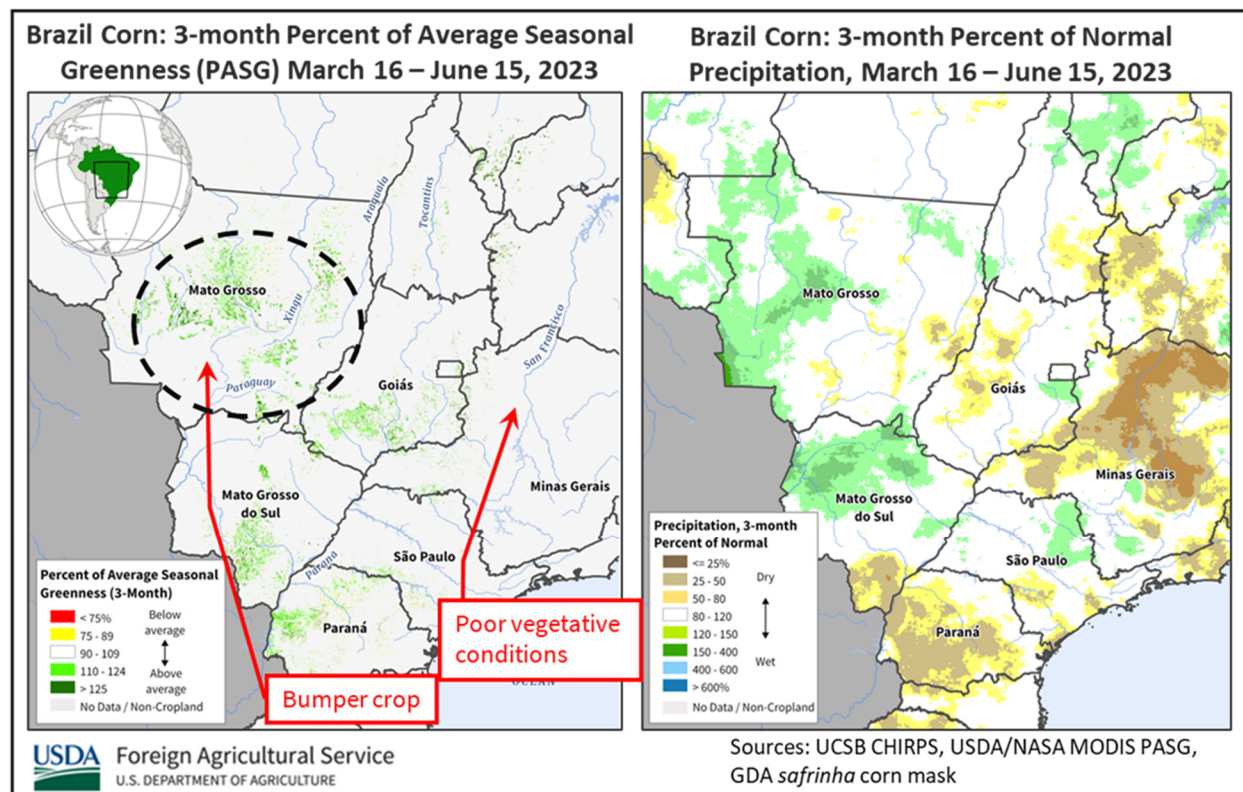
Sources: USDA PSD Online

According to the Ministry of Agriculture’s planting progress data, as of June 22, 4.0 mha have been planted. Overall, this year’s planted area is down relative to last year due to the conflict; farmers, however, have seeded 12 percent more than the initial forecast of 3.6 mha. Abandonment for corn is typically less than 2 percent. Yield is essentially unchanged month-to-month. Corn is mostly grown in the Forest-Steppe zone, located in the central part of the country. At present, soil moisture reserves are below average across large portions of the corn producing region. However, the critical time for yield development occurs during July and early August when the crop reaches the key grainfill stage; precipitation in the next couple of weeks will be needed for achieving optimal yield. Harvest begins in early September.

At present, Ukraine can be divided into two zones: areas in conflict and areas not in conflict. As elaborated by FAS-Kyiv in Ukraine, due to the ongoing war there is no official and reliable information about the status of Ukraine’s agriculture in the conflict zone. As a result, area and production data currently provided by FAS-Kyiv, Ukraine’s Ministry of Agriculture (MinAg) and the State Statistical Service of Ukraine, which inform USDA’s forecasts, do not reflect the whole country. For the MY 2023/24 season the MinAg planted area information for both the MY 2023/24 winter and spring crops excludes the temporarily occupied territory of the Donetsk, Zaporizhzhia, Luhansk and Kherson regions. This is based on an official note included in the daily MinAg planting reports. MinAg also does not include Crimea. USDA crop production estimates for Ukraine include estimated output from Crimea. Crimean area and production numbers are extracted from the agricultural crop reports provided by the Russian Statistical Agency, Rosstat. (For more information, please contact Iliana.Mladenova@usda.gov.)

Brazil Corn: Favorable Conditions Boost Yield Prospects for MY 2022/23

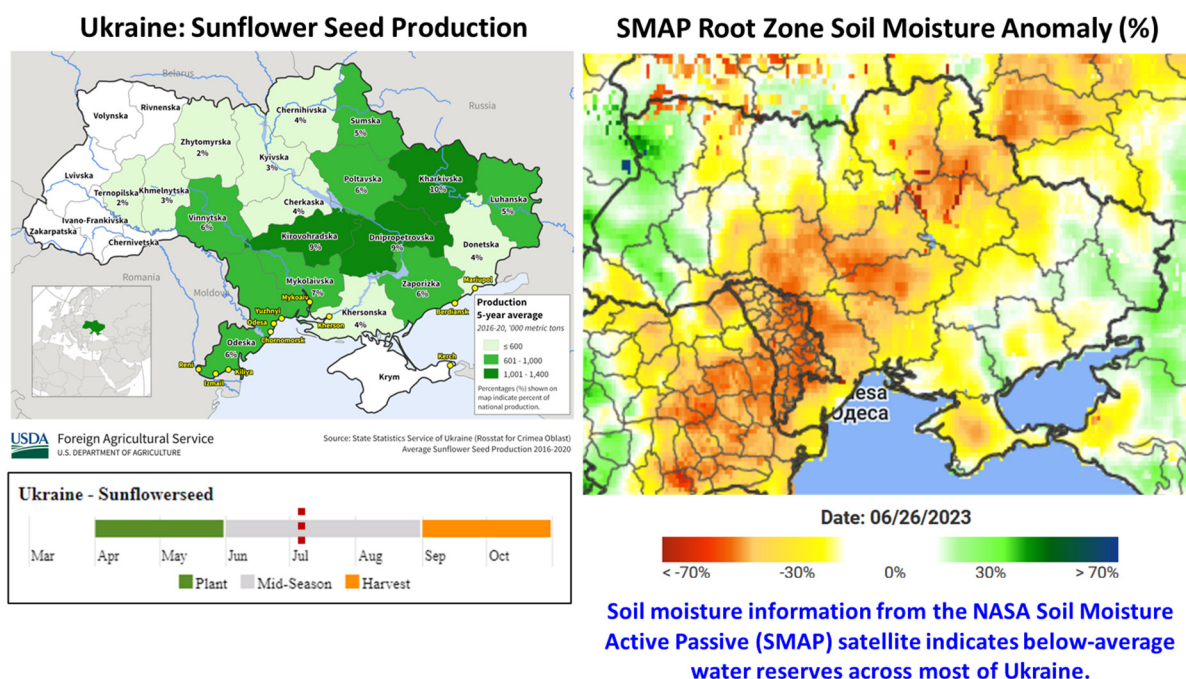
Brazil total corn production for marketing year (MY) 2022/23 is estimated at a record 133.0 million metric tons (mmt), up 1.0 mmt (1 percent) from last month, and larger than the MY 2021/22 crop by 17.0 mmt (15 percent). Total harvested area (for all three corn crops) is reduced from last month to 22.5 million hectares (mha), down 0.2 mha (1 percent) from last month, and up 0.7 mha (3 percent) from MY 2021/22. Yield is estimated at a record of 5.91 tons per hectare, 2 percent higher than last month and 11 percent above the previous year's crop. According to National Supply Company (CONAB) data, harvest for the first-season crop is nearly finished at 95 percent complete with production standing at 27.0 mmt.



Harvest for the second-season crop (77 percent of total production) takes place between June and September. As of July, it is 20 percent complete. Most of the crop is maturing now with a minor portion in grain-filling stages. Above-average rainfall during the season in Mato Grosso (roughly half of *safrinha* production) will likely result in a record crop. The Instituto Mato-Grossense de Economia Agropecuária (IMEA) raised their crop estimate to over 50 mmt in their recent report. Late season unexpected showers in June benefitted the late planted crop, particularly in the states of Paraná and Mato Grosso do Sul where planting was delayed. The satellite-derived Percent of Average Seasonal Greenness (PASG) for the three-month period from mid-March to mid-June displays excellent crop vigor almost everywhere. The dryness in Minas Gerais is in a region with minor corn production. (For more information, please contact Sunita.Yadav-Pauletti@usda.gov.)

Ukraine Sunflower: Increase in Planted Area Despite the Ongoing Conflict

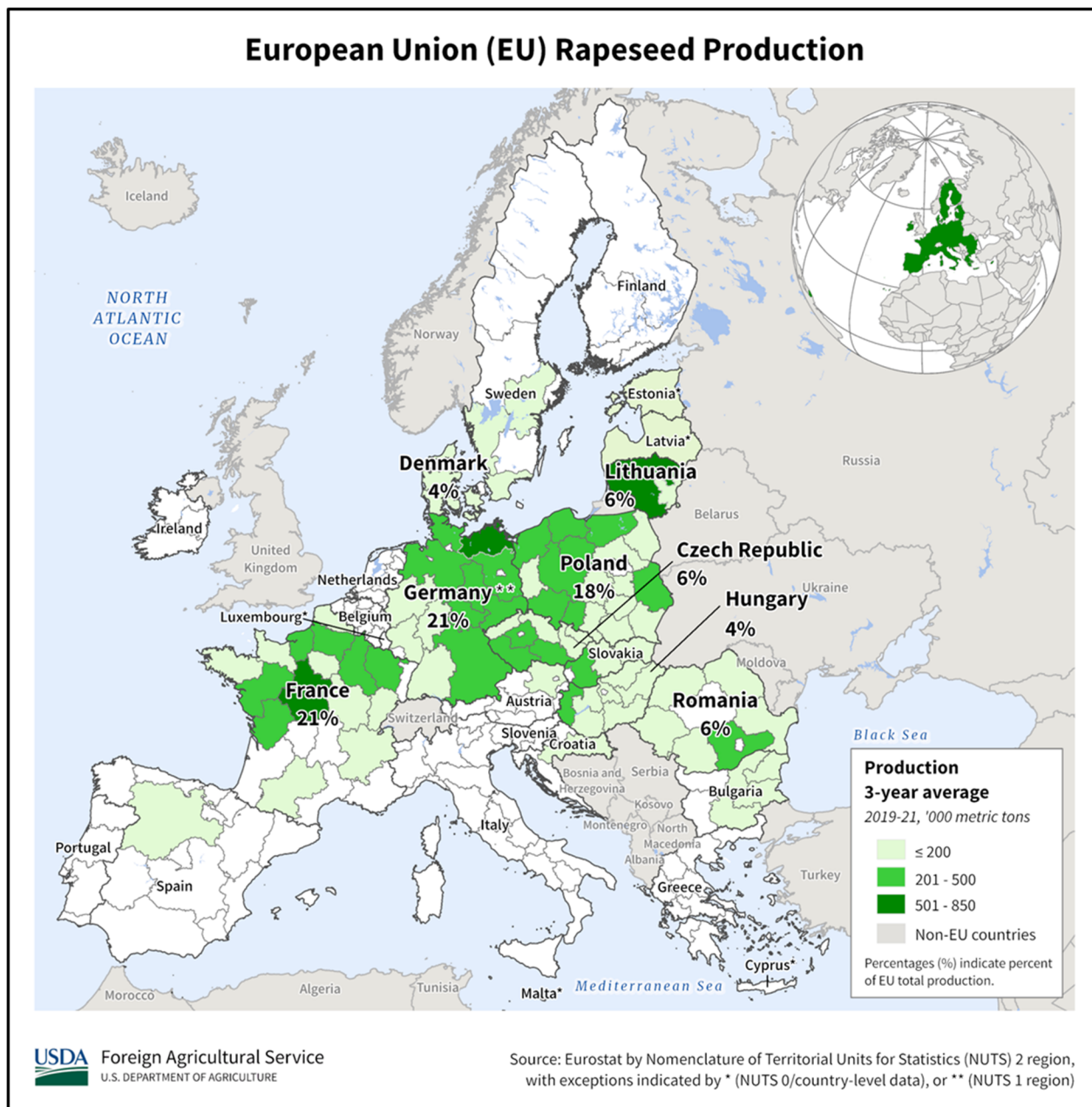
Ukraine sunflower production for marketing year (MY) 2023/24 is forecast at 12.4 million metric tons, up 5 percent from last month and 2 percent from last year. Yield is forecast at 2.07 tons per hectare, unchanged from last month, down 3 percent from last year and 10 percent below the 5-year average. Harvested area is forecast at 6.0 million hectares (mha), up 5 percent from last month and last year, but down 8 percent from the 5-year average.



Overall, harvested area for sunflower marked an increase year-to-year despite the conflict due to the high profitability of this crop and easier transportation logistics. June moisture across most of Ukraine's major sunflower producing regions is below average, as seen in the map of soil moisture from NASA's Soil Moisture Active Passive (SMAP) satellite. Sunflower is still in the vegetative growth stage and the key yield formation window is mid-to-late August. Therefore, precipitation in the next couple of weeks will be essential.

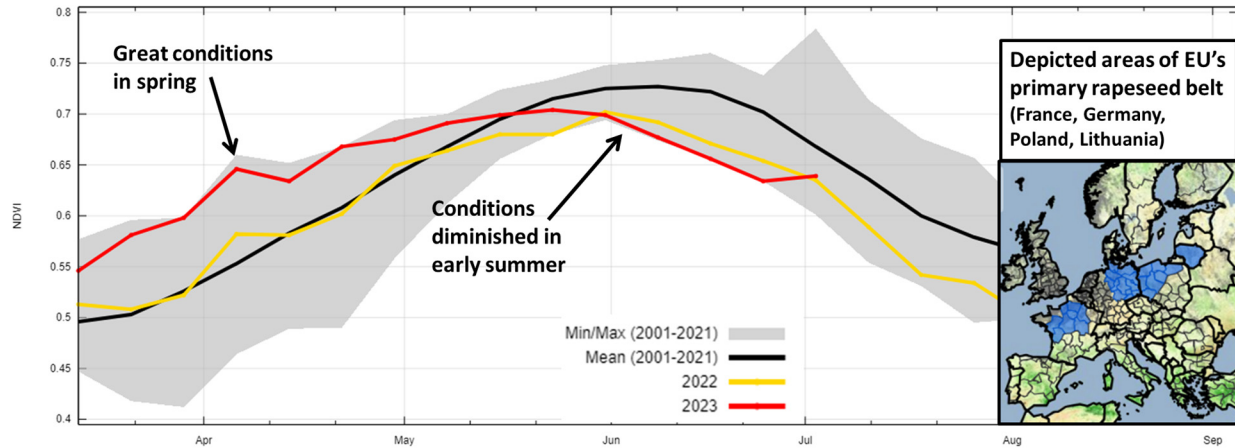
At present, Ukraine can be divided into two zones: areas in conflict and areas not in conflict. As elaborated by FAS-Kyiv in Ukraine, due to the ongoing war there is no official and reliable information about the status of Ukraine's agriculture in the conflict zone. As a result, area and production data currently provided by FAS-Kyiv, Ukraine's Ministry of Agriculture (MinAg) and the State Statistical Service of Ukraine, which inform USDA's forecasts, do not reflect the whole country. For the MY 2023/24 season, the MinAg planted area information for both the MY 2023/24 winter and spring crops excludes the temporarily occupied territory of the Donetsk, Zaporizhzhia, Luhansk and Kherson regions. This is based on an official note included in the daily MinAg planting reports. MinAg also does not include Crimea. USDA crop production estimates for Ukraine include estimated output from Crimea. Crimean area and production numbers are extracted from the agricultural crop reports provided by the Russian Statistical Agency, Rosstat. (For more information, please contact Iliana.Mladenova@usda.gov.)

European Union Rapeseed: Blocking High Prevents Rain, Reduces Crop



European Union (EU) rapeseed production for marketing year (MY) 2023/2024 is forecast at 20.2 million metric tons (mmt), down 0.8 mmt or 4 percent from last month, but up 0.7 mmt or 3 percent above last year. Total EU rapeseed production has been rising for several years and the MY 2023/24 estimate is 16 percent above the 5-year average. Harvested area is estimated at 6.1 million hectares (mha), unchanged from last month, but up 2 percent from last year, and 8 percent above the 5-year average. Yield is estimated at 3.33 tons per hectare (t/ha), down 4 percent from last month, but up 1 percent from last year, and 8 percent above the 5-year average.

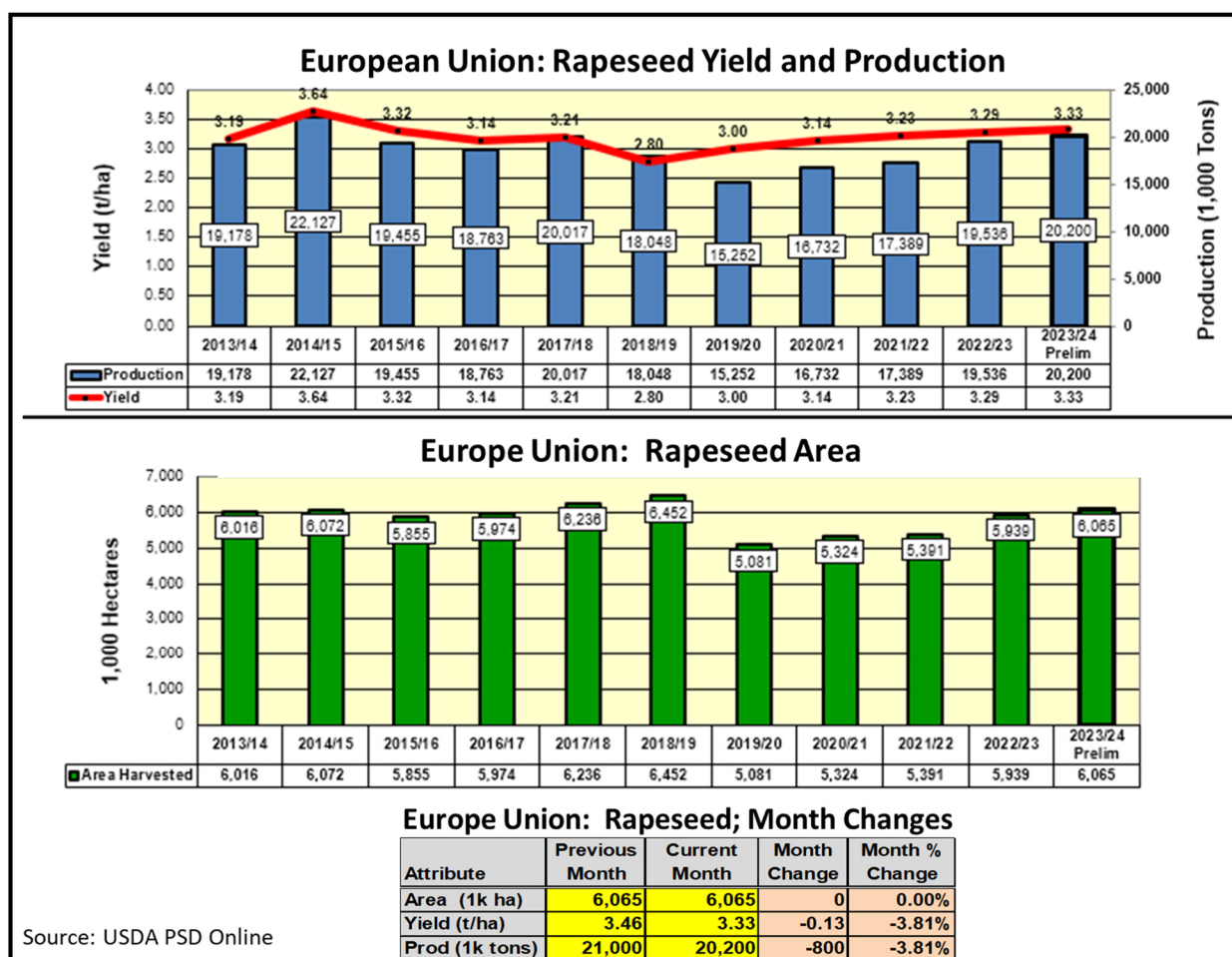
Seasonal Time Series for Terra MODIS 8-day NDVI / ESRI Sentinel-2 Crops



Source: USDA/NASA GLAM, MODIS 8-day NDVI; ESRI, Sentinel-2 2021 crop mask

Favorable dryness had facilitated reproduction and early podfill in May, but it persisted into June, becoming detrimental to the crop. A strong, blocking high pressure system over the primary rapeseed belt of northern Europe prevented much-needed rainfall for proper podfill development. The weather system sent the rain-making storms south to the Mediterranean Basin, away from the big rapeseed producing countries of France, Germany, and Poland to the north. While an above-average crop is still expected, production was lowered because of the early summer drought in northern Europe. Satellite-derived Normalized Difference Vegetation Index (NDVI) depicts the declining vegetative health in the rapeseed areas after a very favorable start in spring. Rapeseed area, yield, and production, however, continues their gradual, 5-year increase as farmers slowly adjust to the ban on neonicotinoids which started in MY 2019/20.

USDA's July EU estimate includes downward revisions for France and Germany by 0.3 mmt each, to 4.6 mmt and 4.2 mmt, respectively. Other decreases include Poland by 0.1 mmt to 3.3 mmt, and some smaller changes to the Baltic countries Denmark and Sweden.

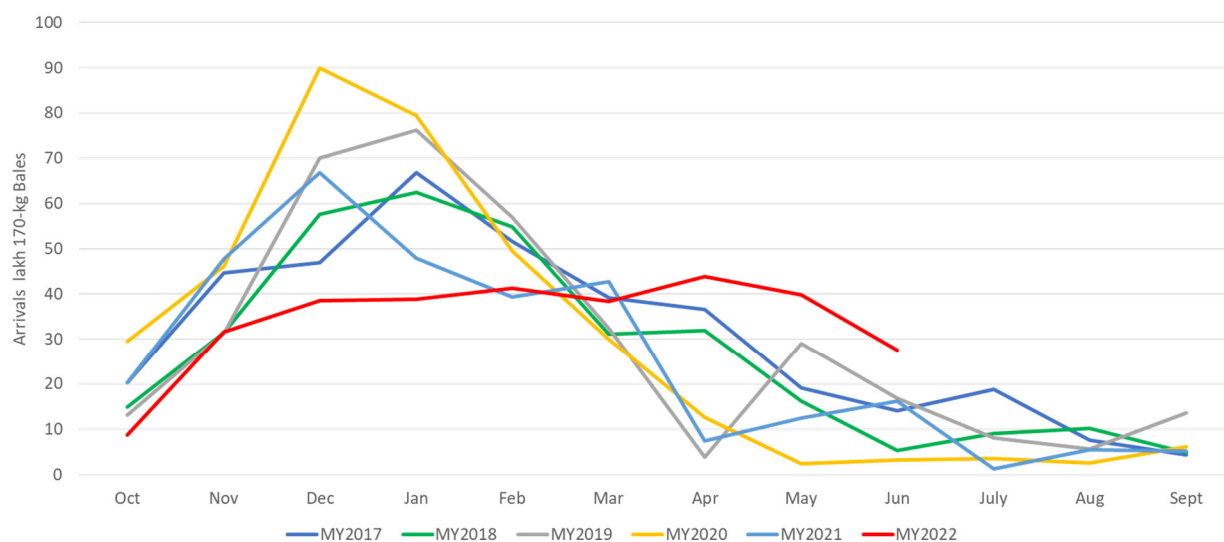


For country-specific area, yield, and production estimates within the European Union (EU), please go to PSD Online at <https://apps.fas.usda.gov/PSDOnline/app/index.html#/app/home>, and select “Downloadable Data Sets.” Select the zipped file for “EU Countries Area & Production.”
(For more information, please contact Bryan.Purcell@usda.gov.)

India Cotton: MY 2022/23 Production Revised Higher

USDA estimates marketing year (MY) 2022/23 cotton production for India at 26.0 million 480-pound bales, up 7 percent from MY 2021/22. The harvested area is estimated at 13.0 million hectares, unchanged from last month and up 5 percent from MY 2021/22. Yields are estimated at 435 kilograms per hectare, up 1 percent from MY 2021/22.

MY 2022/23 India Cotton Arrivals Continue to Trend Higher than Average

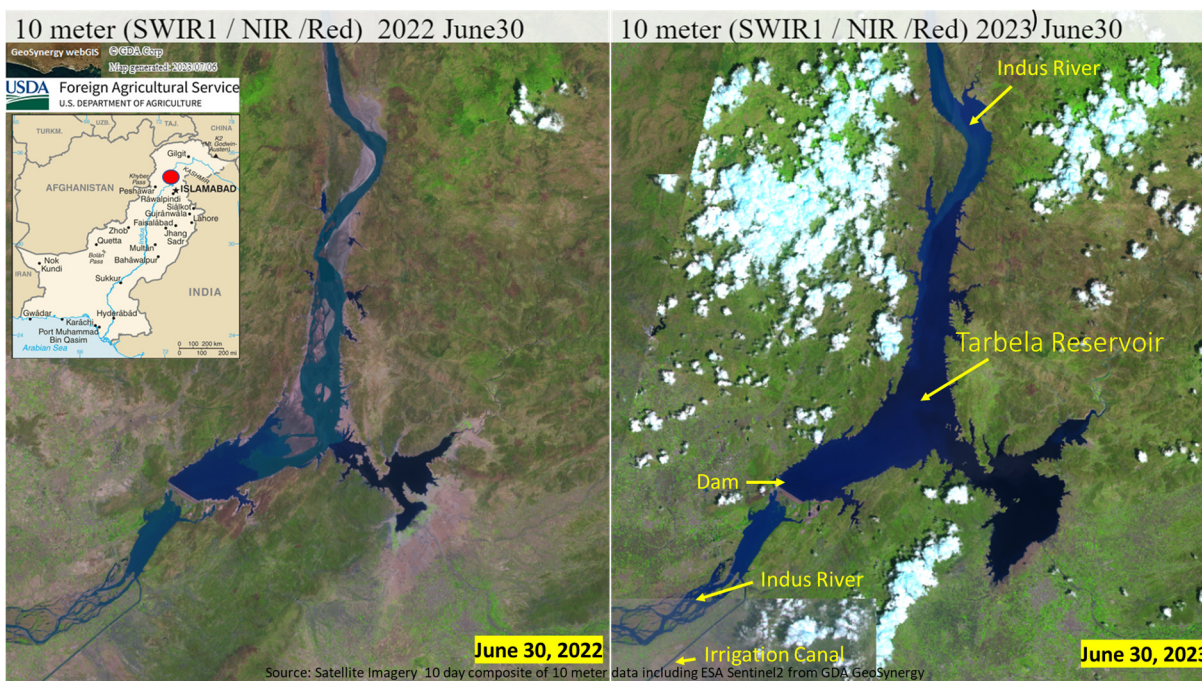


Source: The Cotton Corporation of India, Ltd.

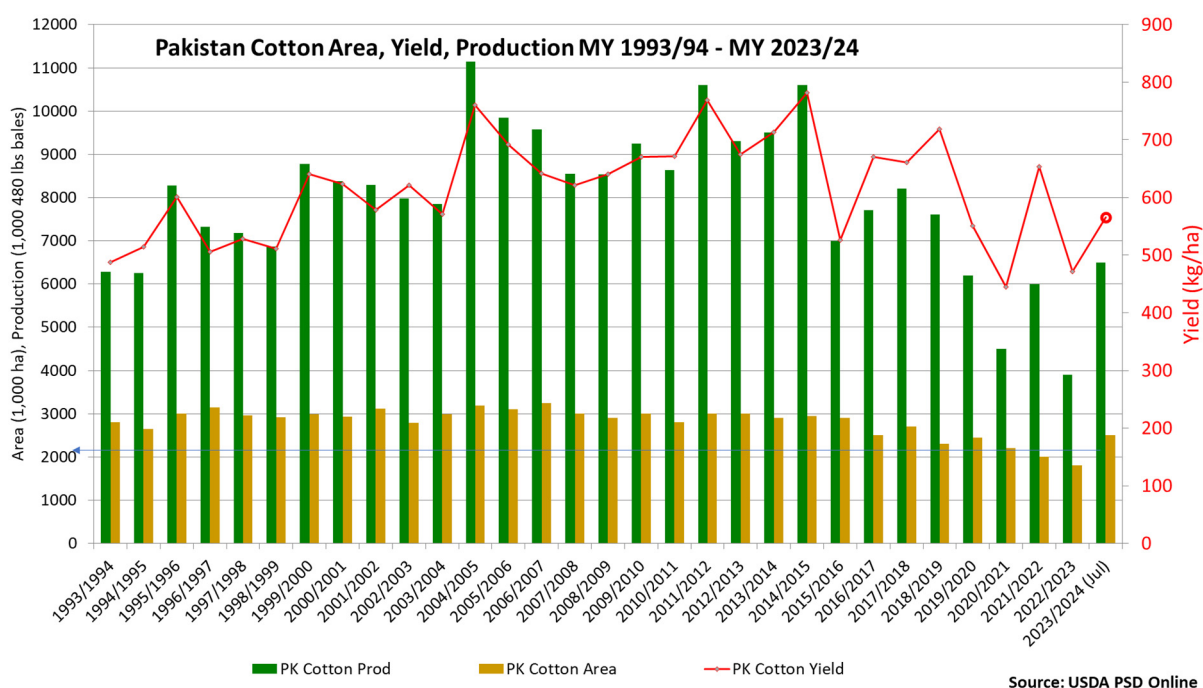
Market arrivals have been slow since the market opened in October. Trade sources estimated that farmers held back 30 to 40 percent of their crop in anticipation of higher prices. Recently, cotton seed arrivals in late June were almost three times the normal for June, indicating that farmers' hopes for higher prices may have faded.

Cotton is grown mostly in the *kharif* season from May to October and harvesting can continue into February. (For more information, please contact Arnella.Trent@usda.gov.)

Pakistan Cotton: Production Recovers from Last Season's Floods

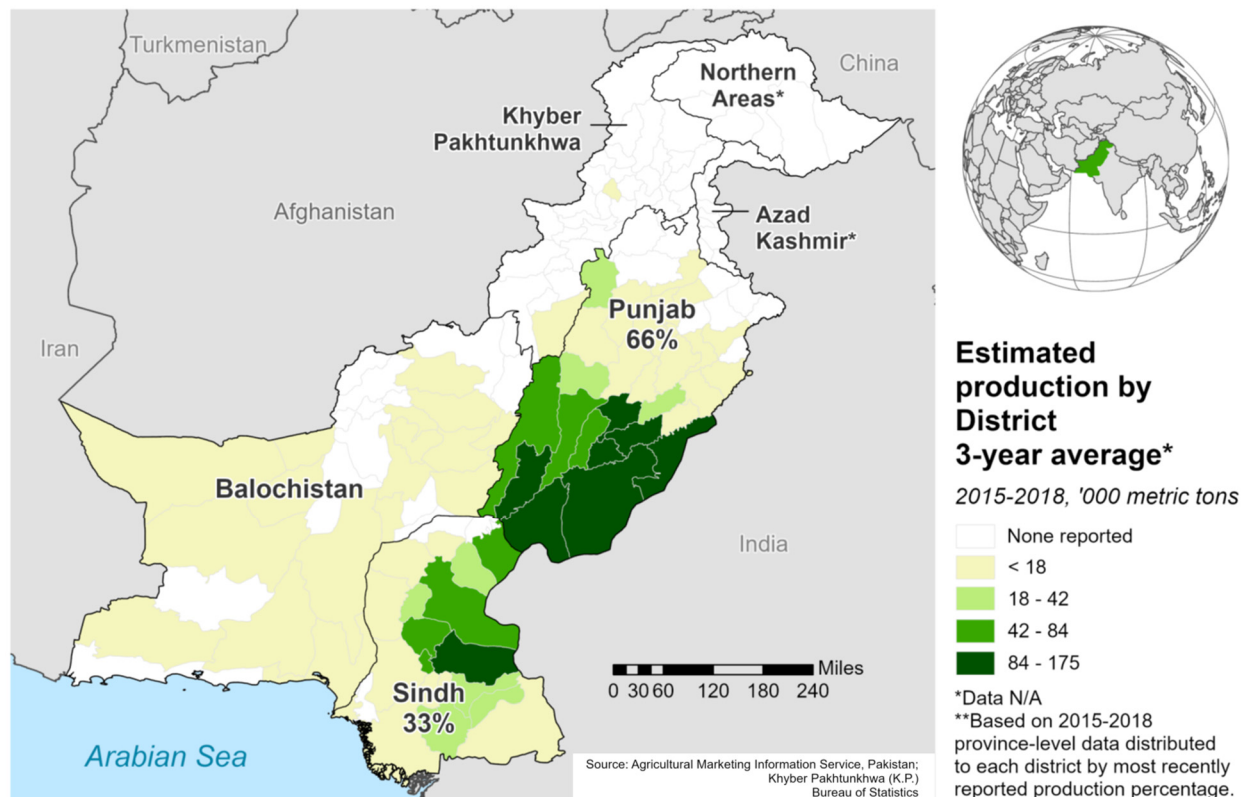


Pakistan's cotton production for marketing year (MY) 2023/24 is estimated at 6.5 million 480-pound bales, up 0.6 million bales from last month and 2.6 million bales following last year's devastating flood. Harvested area is estimated at 2.5 million hectares, up 0.5 mha from last month, and up 0.7 million hectares from last year. This will be the largest cotton planting achieved in several years. Yield is estimated at 566 kilograms per hectare, down 12 percent from last month but up 20 percent from last year.



Growing conditions are favorable for the cotton crop this season with timely rain and favorable soil moisture. Insect infestations have thus far been minimal and the crop, according to local observers, appears in excellent condition.

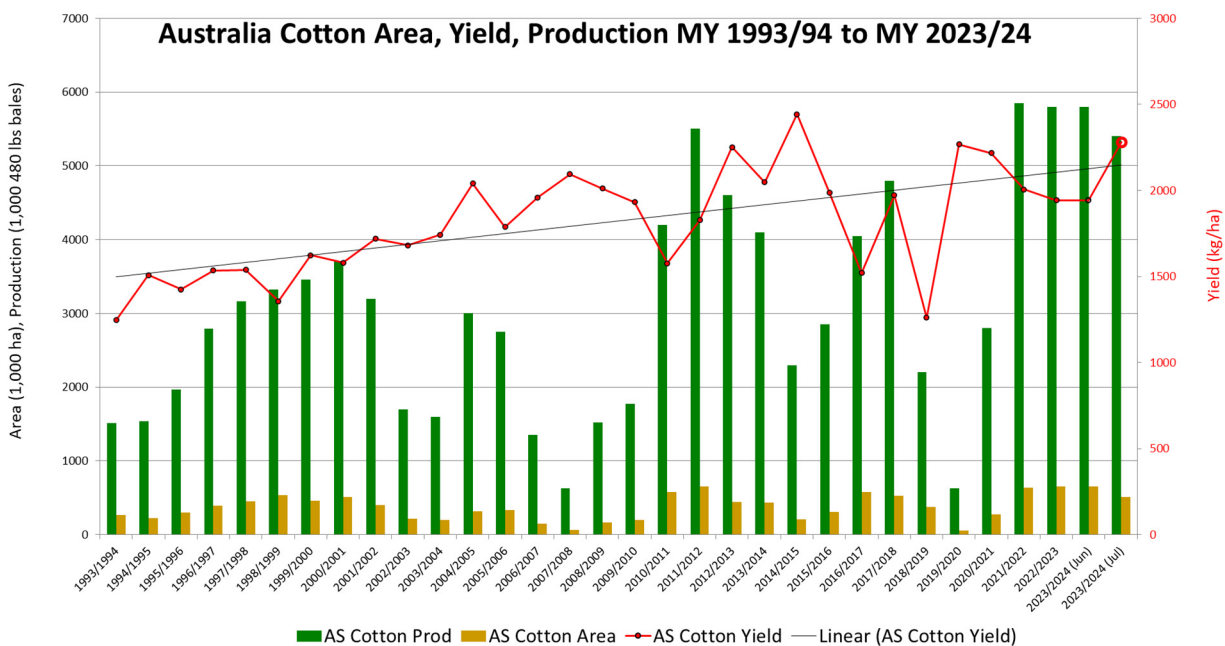
Pakistan: Cotton Production



Cotton is grown under irrigation with the Tarbela Reservoir providing most of the irrigation water. As of late June, the water level in the Tarbela is favorable and well above last season. Cotton planting began in April. Harvest will begin in August with peak harvest typically in October. The two major cotton producing provinces are Punjab (66 percent) and Sindh (33 percent) based on a recent 3-year average. (For more information, please contact James.Crutchfield@usda.gov.)

Australia Cotton: Production Revised Down on Lower Area

Australia's marketing year (MY) 2023/24 cotton production is forecast at 5.4 million 480-pound bales, down 0.4 million bales or 7 percent from last month and last year. Harvested area is estimated at 515,000 hectares (ha), down 135,000 ha or 21 percent from last month and last year. Industry sources indicate lower planting intentions this season.

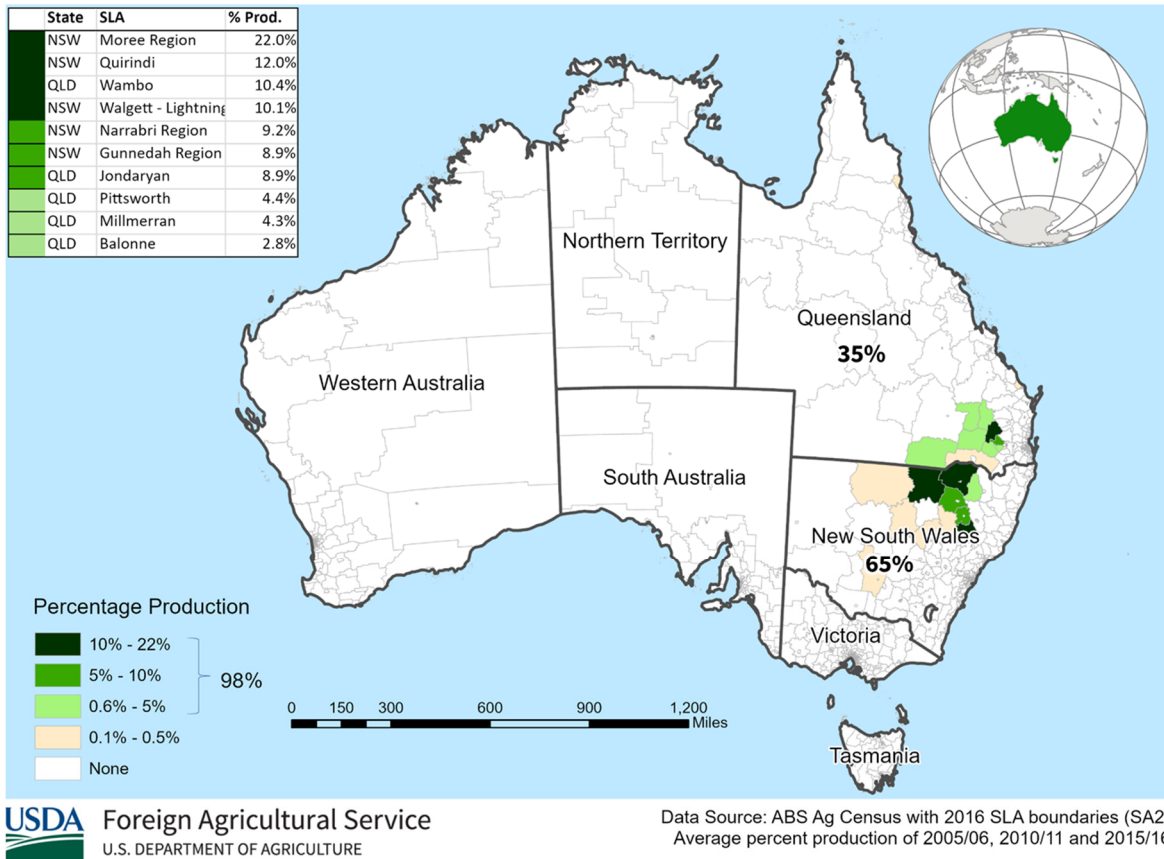


Source: USDA PSD Online

Yield is forecast at 2,283 kilograms per hectare, up 17 percent from last month and last year. The yield forecast is second only to the record set in MY 2014/15 and similar to that of MY 2019/20. Yield is expected to increase year-to-year because of an estimated increase in the share of the total area sown to irrigated cotton this season as compared to last. Dryland cotton yields are substantially lower than irrigated yields.

Irrigated cotton area comprises about 90 percent of Australia's total cotton production. Dryland cotton planting tends to vary with the seasonal weather forecast and prices at sowing. Irrigated cotton area is estimated higher, reflecting increased water storage levels in reservoirs supplying cotton growing regions.

Australia: Cotton Production



Sorghum and cotton are the two dominant summer crops in eastern Australia. Cotton planting will begin in September with October being the primary planting month. Typically, harvest begins in March and peaks in April. The two major cotton producing states are New South Wales (65 percent) and Queensland (35 percent) based on the current 5-year average. *(For more information, please contact James.Crutchfield@usda.gov.)*



World Agricultural Production
U.S. Department of Agriculture

Foreign Agricultural Service / Global Market Analysis
International Production Assessment Division (IPAD)
Ag Box 1051, Room 4630, South Building
Washington, DC 20250-1051

<https://ipad.fas.usda.gov/>

Telephone: (202) 720-1662 Fax: (202) 720-1158

This report uses information from the Foreign Agricultural Service's (FAS) global network of agricultural attachés and counselors, official statistics of foreign governments and other foreign source materials, and the analysis of economic data and satellite imagery. Estimates of foreign area, yield, and production are from the International Production Assessment Division, FAS, and are reviewed by USDA's Inter-Agency Commodity Estimates Committee. Estimates of U.S. area, yield, and production are from USDA's National Agricultural Statistics Service. Numbers within the report may not add to totals because of rounding. This report reflects official USDA estimates released in the World Agricultural Supply and Demand Estimates (WASDE-584), July 12, 2023.

The FAS International Production Assessment Division prepared this report. The next issue of World Agricultural Production will be released after 12:00 p.m. Eastern Time, August 11, 2023.

Conversion Table

Metric tons to bushels

Wheat, soybeans	=	MT * 36.7437
Corn, sorghum, rye	=	MT * 39.36825
Barley	=	MT * 45.929625
Oats	=	MT * 68.894438

Metric tons to 480-lb bales

Cotton	=	MT * 4.592917
--------	---	---------------

Metric tons to hundredweight

Rice	=	MT * 22.04622
------	---	---------------

Area & weight

1 hectare	=	2.471044 acres
1 kilogram	=	2.204622 pounds



For further information, contact:
U.S. Department of Agriculture
Foreign Agricultural Service
Global Market Analysis

International Production Assessment Division
 Ag Box 1051, Room 4630, South Building
 Washington, DC 20250-1051

Telephone: (202) 720-1662

Fax: (202) 720-1158

GENERAL INFORMATION

Senior Director	Ronald Frantz	202-720-4056	ronald.frantz@usda.gov
Director	Robert Tetrault	202-720-1071	robert.tetrault@usda.gov
Administrative Assistant	Vacant		
USDA Remote Sensing Advisor	Vacant		
Sr. Analyst/Technical Lead	Curt Reynolds, Ph.D.	202-690-0134	curt.reynolds@usda.gov
Sr. Analyst/ Satellite Imagery Archives Manager/Technical Lead	Dath Mita, Ph.D.	202-720-7339	dath.mita@usda.gov
Sr. Analyst/Technical Lead	Jim Crutchfield	202-690-0135	james.crutchfield@usda.gov
GIS Mapping/Imagery Analyst	Lisa Colson	202-720-6652	lisa.colson@usda.gov
WAP Coordinators	Ifeoma Collins	202-720-0240	ifeoma.collins@usda.gov
	Aaron Mulhollen	202-690-0131	aaron.mulhollen@usda.gov

COUNTRY- AND REGION-SPECIFIC INFORMATION

South America, Argentina, Venezuela, and Colombia	Katie McGaughey	202-720-9210	katie.mcgaughey@usda.gov
Western and Central Europe, and North Africa	Bryan Purcell	202-690-0138	bryan.purcell@usda.gov
Russia, Ukraine, Kazakhstan, Moldova, and Belarus	Iliana Mladenova, Ph.D.	202-690-2315	iliana.mladenova@usda.gov
South Asia, Sri Lanka Bangladesh, India, and Nepal	Arnella Trent	202-720-0881	arnella.trent@usda.gov
East Asia, China, and Japan	Dath Mita, Ph.D.	202-720-7339	dath.mita@usda.gov
Sub-Saharan Africa, Nigeria and South Africa	Curt Reynolds, Ph.D.	202-690-0134	curt.reynolds@usda.gov
S.E. Asia, Indonesia, Thailand, Malaysia, Cambodia and Vietnam	Justin Jenkins	202-720-0419	justin.jenkins@usda.gov
Central America, Mexico, and Western United States	Ifeoma Collins	202-720-0240	ifeoma.collins@usda.gov
Australia, New Zealand, Pakistan Papua New Guinea and South Pacific Islands	Jim Crutchfield	202-690-0135	james.crutchfield@usda.gov
Middle East, Central Asia, Afghanistan Iraq, Iran, and Syria	Aaron Mulhollen	202-690-0131	aaron.mulhollen@usda.gov
Canada, Caribbean, Eastern United States	Aaron Mulhollen	202-690-0131	aaron.mulhollen@usda.gov
Brazil	Sunita Yadav-Pauletti, Ph.D.		sunita.yadav-pauletti@usda.gov



The Foreign Agricultural Service (FAS) updates its production, supply and distribution (PSD) database for cotton, oilseeds, and grains at 12:00 p.m. on the day the *World Agricultural Supply and Demand Estimates* (WASDE) report is released. This circular is released by 12:15 p.m.

FAS Reports and Databases:

World Agricultural Production

Current: <https://www.fas.usda.gov/data/world-agricultural-production>

Archive: <https://usda.library.cornell.edu/concern/publications/5q47rn72z?locale=en>

USDA's Foreign Agricultural Service (FAS) publishes a monthly report on crop acreage, yield and production in major countries worldwide. Sources include reporting from FAS's worldwide offices, official statistics of foreign governments, and analysis of economic data and satellite imagery. The reports reflect official USDA estimates released in the monthly *World Agricultural Supply and Demand Estimates* (WASDE).

World Markets and Trade

Current: <https://www.fas.usda.gov/data>

Archive:

https://usda.library.cornell.edu/catalog?f%5Bmember_of_collections_ssim%5D%5B%5D=Foreign+Agricultural+Service&locale=en

USDA's Foreign Agricultural Service (FAS) publishes monthly and quarterly reports which include data on U.S. and global trade, production, consumption and stocks, as well as analysis of developments affecting world trade in oilseeds, grains, cotton, livestock and poultry. The reports reflect official USDA estimates released in the monthly *World Agricultural Supply and Demand Estimates* (WASDE).

Global Agricultural Information Network (GAIN)

<https://gain.fas.usda.gov/>

USDA's Foreign Agricultural Service (FAS) provides timely reports on foreign markets through the Global Agriculture Information Network (GAIN) database. An average of 2,000 reports are added each year, with reports going back to 1995. GAIN reports are compiled by FAS' global market intelligence network, which includes FAS foreign service officers and locally engaged staff in over 90 overseas offices world-wide. They provide on-the-ground intelligence, insight, and analysis on nearly 200 countries, delivering information on foreign agricultural markets, crop conditions, and agro-political dynamics of interest to U.S. agriculture. GAIN reports contain assessments of commodity and trade issues made by USDA staff and are not necessarily statements of official U.S. government policy.

Production, Supply and Distribution (PS&D) Online

<https://apps.fas.usda.gov/psdonline/app/index.html#/app/home>

PSD Online is the public repository for USDA's Official Production, Supply and Distribution forecast data and reports for key agricultural commodities. PSD Online data are reviewed and updated monthly by an interagency committee chaired by USDA's World Agricultural Outlook Board (WAOB). The committee consist of representatives from Foreign Agricultural Service (FAS), the Economic Research Service (ERS), the Farm Service Agency (FSA), and the Agricultural Marketing Service (AMS).

EU Countries and Russia Wheat: Area and Production Estimates

<https://apps.fas.usda.gov/psdonline/app/index.html#/app/downloads> (click on PSD Datasets)

USDA's Foreign Agricultural Service (FAS) provides country-level area and production estimates for the nations of the European Union. For Russia, country-level area and production estimates are provided for Winter and Spring wheat. These datasets are reviewed and updated monthly by an interagency committee chaired by USDA's World Agricultural Outlook Board (WAOB) and can be downloaded through PSD datasets on PSD Online.



FAS Reports and Databases:

International Production Assessment (IPAD)

<https://ipad.fas.usda.gov/>

USDA's Foreign Agricultural Service (FAS) maintains a dynamic global crop production portal with key information including *World Agricultural Production* (WAP) briefs, Commodity Intelligence Reports (CIR), geospatial applications, crop production maps at a subnational level and crop calendars for the top-20 producing countries. Additionally, Crop Explorer (<https://ipad.fas.usda.gov/cropexplorer/>) displays rainfall, temperature, evapotranspiration, soil moisture, snow cover, and vegetation conditions in charts and maps.

USDA and NASA Global Agricultural Monitoring (GLAM)

<https://glam1.gsfc.nasa.gov/>

The USDA and NASA Global Agricultural Monitoring (GLAM) system provides near real-time and science quality Moderate Resolution Imaging Spectroradiometer (MODIS) Normalized Difference Vegetation Index (NDVI) from the satellites Terra and Aqua. The public can view and retrieve MODIS 8-day composited, global NDVI satellite imagery and time series data. GLAM was developed by NASA's Global Inventory Modeling and Mapping Studies (GIMMS) group for USDA's Foreign Agricultural Service.

Global Agricultural and Disaster Assessment System (GADAS)

<https://geo.fas.usda.gov/GADAS/index.html>

USDA's Foreign Agricultural Service (FAS) provides the Global Agricultural and Disaster Assessment System (GADAS), a web-based Geographic Information System (GIS) tool which integrates a vast array of highly detailed earth observation data streams, particularly targeted towards agricultural and disaster assessment analysis. GADAS is an interactive website which provides analysts with a wide variety of routine geospatial products (maps, charts, tables) they require for comprehensive situational investigations and recurring assessments.

Export Sales Reporting

<https://apps.fas.usda.gov/esrquery/>

USDA's Export Sales Reporting Program monitors U.S. agricultural export sales on a daily and weekly basis. Export sales reporting provides a constant stream of up-to-date market information for 40 U.S. agricultural commodities sold abroad. The weekly U.S. Export Sales report is the most currently available source of U.S. exports sales data. The data is used to analyze overall levels of export demand, determine where markets exit, and assess the relative position of U.S. commodities in foreign markets.

Global Agricultural Trade System (GATS)

<https://apps.fas.usda.gov/gats/default.aspx>

The Global Agricultural Trade System (GATS) is a searchable database containing monthly U.S. Census Bureau trade data organized by agricultural commodity and agricultural related product groups. Trade data is searchable by partner countries and partner groups. Historical U.S. agricultural trade data is available back to 1967. In addition, U.N. trade statistics (UN Comtrade) may be queried through GATS. UN trade data is available for nearly 200 countries or areas, dating from the inception of the Harmonized System (HS) of trade codes in 1989 to present. The database is continuously updated. U.S. trade data is updated monthly according to the U.S. Census Bureau's reporting system. UN Comtrade data are updated in GATS after nationally submitted data to the UN are standardized by the UN Statistical Division and added to the UN Comtrade database.

Other USDA Reports:

World Agricultural Supply and Demand Estimates (WASDE):

<http://www.usda.gov/oce/commodity/wasde/>

Economic Research Service:

<http://www.ers.usda.gov/topics/crops>

National Agricultural Statistics Service:

<http://www.nass.usda.gov/Publications/>

Table 01 World Crop Production Summary

Million Metric Tons

Commodity	World -	Total Foreign	North America			Former Soviet		Europea n	Asia (WAP)					South America		Selected Other			All Others
			United States	Canada -	Mexico -	Russia -	Ukraine -		China -	India -	Indo-nesia	Paki- stan	Thai- land	Argen- tina	Brazil -	Aus- tralia	South Africa	Turkey -	
---Million metric tons---																			
Wheat																			
2021/22	781.0	736.2	44.8	22.4	3.3	75.2	33.0	nr	136.9	109.6	0.0	27.5	0.0	22.2	7.7	36.2	2.3	16.0	244.0
2022/23 prel.	790.2	745.3	44.9	33.8	3.6	92.0	21.5	nr	137.7	104.0	0.0	26.4	0.0	12.6	10.6	39.7	2.1	17.3	244.1
2023/24 proj.																			
Jun	800.2	754.9	45.3	37.0	3.3	85.0	17.5	nr	140.0	113.5	0.0	26.8	0.0	19.5	10.0	29.0	2.0	19.5	251.8
Jul	796.7	749.3	47.3	35.0	3.3	85.0	17.5	nr	140.0	113.5	0.0	28.0	0.0	17.5	10.0	29.0	2.0	19.5	249.0
Coarse Grains																			
2021/22	1,505.0	1,107.3	397.7	25.1	32.8	38.5	53.5	nr	280.9	51.4	12.7	11.0	5.4	59.2	120.6	19.2	16.6	11.6	368.8
2022/23 prel.	1,442.8	1,084.3	358.5	30.5	32.3	44.1	33.9	nr	285.5	54.5	12.9	9.9	5.3	42.7	137.6	18.7	17.4	14.8	344.2
2023/24 proj.																			
Jun	1,513.3	1,111.3	402.0	28.3	33.2	42.3	31.7	nr	288.3	52.9	13.1	11.0	5.6	62.6	134.3	13.7	17.4	17.0	359.9
Jul	1,513.4	1,108.8	404.5	28.4	33.2	42.3	31.5	nr	288.3	52.9	13.1	11.0	5.6	63.4	134.3	13.7	17.4	17.0	356.8
Rice, Milled																			
2021/22	513.7	507.7	6.1	0.0	0.2	0.7	0.0	nr	149.0	129.5	34.4	9.3	19.9	0.8	7.3	0.5	0.0	0.5	155.5
2022/23 prel.	512.5	507.4	5.1	0.0	0.1	0.6	0.0	nr	145.9	136.0	34.0	5.5	20.2	0.8	6.8	0.4	0.0	0.6	156.5
2023/24 proj.																			
Jun	520.5	514.4	6.1	0.0	0.2	0.7	0.0	nr	149.0	134.0	34.5	9.0	19.7	0.8	6.8	0.5	0.0	0.6	158.7
Jul	520.8	514.4	6.4	0.0	0.2	0.7	0.0	nr	149.0	134.0	34.5	9.0	19.7	0.8	6.8	0.5	0.0	0.6	158.7
Total Grains																			
2021/22	2,799.8	2,351.2	448.6	47.5	36.2	114.4	86.6	nr	566.8	290.4	47.1	47.8	25.2	82.1	135.7	56.0	18.9	28.1	768.4
2022/23 prel.	2,745.5	2,337.0	408.5	64.4	36.0	136.7	55.4	nr	569.2	294.5	46.9	41.8	25.5	56.0	155.0	58.7	19.5	32.6	744.8
2023/24 proj.																			
Jun	2,834.0	2,380.5	453.5	65.3	36.7	127.9	49.2	nr	577.3	300.4	47.6	46.9	25.3	82.9	151.1	43.2	19.4	37.1	770.3
Jul	2,830.8	2,372.6	458.2	63.4	36.7	127.9	49.0	nr	577.3	300.4	47.6	48.0	25.3	81.7	151.1	43.2	19.4	37.1	764.5
Oilseeds																			
2021/22	611.1	479.7	131.4	20.1	0.9	23.1	24.3	nr	62.1	43.2	14.3	3.4	1.0	49.9	135.5	8.7	3.4	3.4	86.7
2022/23 prel.	629.5	503.6	125.9	25.6	0.9	26.3	19.8	nr	68.5	42.1	14.8	2.3	1.0	31.2	161.7	10.1	3.8	4.0	91.4
2023/24 proj.																			
Jun	671.4	538.2	133.2	26.9	0.8	26.1	19.6	nr	67.2	42.4	14.9	3.3	1.0	53.7	168.5	6.7	3.8	3.3	99.8
Jul	667.3	539.7	127.6	27.1	0.8	26.1	21.0	nr	67.2	42.4	14.9	3.6	1.0	53.8	168.5	6.6	4.0	3.3	99.3
Cotton																			
2021/22	115.7	98.1	17.5	0.0	1.2	0.0	0.0	1.7	26.8	24.4	0.0	6.0	0.0	1.4	11.7	5.9	0.1	3.8	15.2
2022/23 prel.	118.0	103.5	14.5	0.0	1.6	0.0	0.0	1.6	30.7	26.0	0.0	3.9	0.0	1.0	13.7	5.8	0.1	4.9	14.2
2023/24 proj.																			
Jun	116.7	100.2	16.5	0.0	1.3	0.0	0.0	1.5	27.0	25.5	0.0	5.9	0.0	1.3	13.3	5.8	0.1	3.5	15.1
Jul	116.8	100.3	16.5	0.0	1.3	0.0	0.0	1.5	27.0	25.5	0.0	6.5	0.0	1.2	13.3	5.4	0.1	3.5	15.2

1/ Includes wheat, coarse grains, and rice (milled) shown above.

Table 02 Wheat Area, Yield, and Production

Country / Region	Area (Million hectares)				Yield (Metric tons per hectare)				Production (Million metric tons)				Change in Production			
	2021/22	Prel.	2023/24 Proj.		2021/22	Prel.	2023/24 Proj.		2021/22	Prel.	2023/24 Proj.		From last month		From last year	
		2022/23	Jun	Jul		2022/23	Jun	Jul		2022/23	Jun	Jul	MMT	Percent	MMT	Percent
World	221.91	220.94	221.88	221.43	3.52	3.58	3.61	3.60	781.05	790.20	800.19	796.67	-3.52	-0.44	6.47	0.82
United States	15.03	14.36	15.01	15.27	2.98	3.13	3.02	3.10	44.80	44.90	45.32	47.33	2.01	4.43	2.43	5.41
Total Foreign	206.88	206.58	206.87	206.17	3.56	3.61	3.65	3.63	736.24	745.30	754.87	749.34	-5.53	-0.73	4.04	0.54
European Union	24.28	24.35	24.43	24.35	5.69	5.52	5.75	5.67	138.24	134.34	140.50	138.00	-2.50	-1.78	3.66	2.72
United Kingdom	1.79	1.81	1.83	1.83	7.81	8.59	8.58	8.47	13.99	15.54	15.70	15.50	-0.20	-1.27	-0.04	-0.26
Serbia	0.60	0.62	0.63	0.73	5.71	5.16	5.71	4.97	3.40	3.20	3.60	3.60	0.00	0.00	0.40	12.50
China	23.57	23.52	23.60	23.60	5.81	5.86	5.93	5.93	136.95	137.72	140.00	140.00	0.00	0.00	2.28	1.65
South Asia																
India	31.13	30.46	32.00	32.00	3.52	3.41	3.55	3.55	109.59	104.00	113.50	113.50	0.00	0.00	9.50	9.13
Pakistan	9.17	9.00	9.00	8.86	3.00	2.93	2.98	3.16	27.46	26.40	26.81	28.00	1.19	4.44	1.60	6.06
Afghanistan	2.05	2.20	2.20	2.35	2.45	2.05	2.18	2.20	5.02	4.50	4.80	5.17	0.37	7.71	0.67	14.89
Nepal	0.72	0.72	0.72	0.72	2.90	2.92	2.92	2.92	2.08	2.10	2.10	2.10	0.00	0.00	0.00	0.00
Former Soviet Union - 12																
Russia	27.63	29.00	27.50	27.50	2.72	3.17	3.09	3.09	75.16	92.00	85.00	85.00	0.00	0.00	-7.00	-7.61
Russia Winter	15.22	16.30	15.00	15.00	3.43	4.17	4.10	4.10	52.19	68.00	61.50	61.50	0.00	0.00	-6.50	-9.56
Russia Spring	12.41	12.70	12.50	12.50	1.85	1.89	1.88	1.88	22.96	24.00	23.50	23.50	0.00	0.00	-0.50	-2.08
Ukraine	7.41	5.60	4.30	4.30	4.45	3.84	4.07	4.07	33.01	21.50	17.50	17.50	0.00	0.00	-4.00	-18.60
Kazakhstan	12.72	12.81	12.50	12.50	0.93	1.28	1.12	1.12	11.81	16.40	14.00	14.00	0.00	0.00	-2.40	-14.65
Uzbekistan	1.24	1.40	1.40	1.40	4.83	4.48	4.64	4.50	5.99	6.27	6.50	6.30	-0.20	-3.08	0.03	0.48
Belarus	0.65	0.68	0.68	0.68	3.54	3.48	3.38	3.38	2.30	2.35	2.30	2.30	0.00	0.00	-0.05	-2.13
Canada	9.20	10.08	10.60	10.60	2.44	3.35	3.49	3.30	22.42	33.82	37.00	35.00	-2.00	-5.41	1.18	3.48
South America																
Argentina	6.55	5.50	6.50	5.80	3.38	2.28	3.00	3.02	22.15	12.55	19.50	17.50	-2.00	-10.26	4.95	39.44
Brazil	2.74	3.09	3.30	3.30	2.81	3.43	3.03	3.03	7.70	10.60	10.00	10.00	0.00	0.00	-0.60	-5.66
Australia	12.73	13.05	12.50	12.50	2.85	3.04	2.32	2.32	36.24	39.69	29.00	29.00	0.00	0.00	-10.69	-26.92
Africa																
Egypt	1.44	1.45	1.35	1.35	6.85	6.55	6.42	6.57	9.84	9.50	8.67	8.87	0.20	2.31	-0.63	-6.63
Morocco	2.86	2.50	2.55	2.55	2.64	1.08	1.49	1.63	7.54	2.70	3.80	4.16	0.36	9.47	1.46	54.07
Algeria	2.08	2.08	2.08	2.08	1.20	1.78	1.30	1.30	2.50	3.70	2.70	2.70	0.00	0.00	-1.00	-27.03
Ethiopia	1.95	2.30	2.50	2.50	2.83	3.04	3.00	3.00	5.52	7.00	7.50	7.50	0.00	0.00	0.50	7.14
Middle East																
Turkey	7.05	6.80	7.20	7.20	2.27	2.54	2.71	2.71	16.00	17.25	19.50	19.50	0.00	0.00	2.25	13.04
Iran	6.00	6.20	6.20	6.20	2.00	2.13	2.34	2.26	12.00	13.20	14.50	14.00	-0.50	-3.45	0.80	6.06
Iraq	2.00	2.00	2.20	2.20	1.75	1.50	1.91	1.91	3.50	3.00	4.20	4.20	0.00	0.00	1.20	40.00
Syria	1.57	1.50	1.20	1.20	1.25	1.40	2.00	2.00	1.95	2.10	2.40	2.40	0.00	0.00	0.30	14.29
Mexico	0.55	0.59	0.55	0.55	6.00	6.07	6.00	6.00	3.28	3.57	3.30	3.30	0.00	0.00	-0.27	-7.61
Others	7.24	7.29	7.35	7.33	2.85	2.78	2.79	2.76	20.61	20.29	20.49	20.24	-0.25	-1.22	-0.05	-0.25

Table 03 Total Coarse Grain Area, Yield, and Production

Country / Region	Area (Million hectares)				Yield (Metric tons per hectare)				Production (Million metric tons)				Change in Production			
	2021/22	Prel.	2023/24 Proj.		2021/22	Prel.	2023/24 Proj.		2021/22	Prel.	2023/24 Proj.		From last month		From last year	
		2022/23	Jun	Jul		2022/23	Jun	Jul		2022/23	Jun	Jul	MMT	Percent	MMT	Percent
World	345.21	336.17	338.65	339.82	4.36	4.29	4.47	4.45	1,504.99	1,442.81	1,513.29	1,513.38	0.08	0.01	70.57	4.89
United States	38.34	35.39	37.59	38.85	10.37	10.13	10.69	10.41	397.71	358.47	402.01	404.53	2.51	0.63	46.06	12.85
Total Foreign	306.87	300.78	301.06	300.98	3.61	3.61	3.69	3.68	1,107.28	1,084.34	1,111.28	1,108.85	-2.43	-0.22	24.51	2.26
China	45.77	45.52	45.44	45.44	6.14	6.27	6.35	6.35	280.85	285.50	288.30	288.30	0.00	0.00	2.80	0.98
European Union	27.74	26.76	26.73	26.52	5.58	5.00	5.49	5.40	154.77	133.84	146.65	143.30	-3.35	-2.28	9.46	7.07
United Kingdom	1.43	1.34	1.32	1.32	5.88	6.44	6.29	6.29	8.41	8.64	8.33	8.33	0.00	0.00	-0.31	-3.61
South America																
Brazil	23.37	24.20	24.77	24.77	5.16	5.69	5.42	5.42	120.62	137.60	134.33	134.33	0.00	0.00	-3.28	-2.38
Argentina	9.84	9.48	9.38	9.58	6.01	4.50	6.67	6.62	59.16	42.71	62.58	63.38	0.80	1.28	20.67	48.41
Former Soviet Union - 12																
Russia	14.01	13.60	13.55	13.55	2.75	3.25	3.12	3.12	38.54	44.13	42.25	42.25	0.00	0.00	-1.88	-4.26
Ukraine	8.66	6.32	5.92	5.82	6.18	5.37	5.35	5.41	53.51	33.93	31.67	31.47	-0.20	-0.63	-2.46	-7.24
Kazakhstan	2.63	2.63	2.55	2.55	1.43	1.79	1.72	1.72	3.76	4.71	4.39	4.39	0.00	0.00	-0.32	-6.81
Belarus	0.99	1.03	1.05	1.05	3.05	3.11	3.09	3.09	3.00	3.20	3.23	3.23	0.00	0.00	0.03	0.94
Africa																
Nigeria	13.70	13.50	13.40	13.40	1.56	1.59	1.54	1.54	21.40	21.51	20.70	20.70	0.00	0.00	-0.81	-3.75
South Africa	3.19	3.18	3.20	3.20	5.22	5.48	5.43	5.43	16.64	17.44	17.37	17.37	0.00	0.00	-0.07	-0.37
Tanzania	5.74	5.30	5.30	5.30	1.47	1.36	1.36	1.36	8.45	7.23	7.23	7.23	0.00	0.00	0.00	0.00
Burkina Faso	4.20	4.24	4.20	4.20	1.00	1.16	1.13	1.13	4.20	4.92	4.75	4.75	0.00	0.00	-0.17	-3.49
Ethiopia	5.60	5.64	5.65	5.65	3.10	3.19	3.24	3.24	17.37	17.95	18.30	18.30	0.00	0.00	0.35	1.95
Egypt	1.17	1.16	1.18	1.18	7.11	7.13	7.15	7.15	8.31	8.30	8.46	8.46	0.00	0.00	0.16	1.93
Mali	5.16	4.80	4.80	4.80	1.23	1.49	1.42	1.42	6.34	7.15	6.80	6.80	0.00	0.00	-0.35	-4.87
India	23.35	23.80	23.84	23.84	2.20	2.29	2.22	2.22	51.39	54.53	52.89	52.89	0.00	0.00	-1.64	-3.01
Southeast Asia																
Indonesia	3.90	3.95	4.00	4.00	3.26	3.27	3.28	3.28	12.70	12.90	13.10	13.10	0.00	0.00	0.20	1.55
Philippines	2.56	2.50	2.57	2.57	3.26	3.32	3.27	3.27	8.34	8.30	8.40	8.40	0.00	0.00	0.10	1.20
Vietnam	0.90	0.87	0.83	0.83	4.92	4.97	5.06	5.06	4.45	4.30	4.20	4.20	0.00	0.00	-0.10	-2.33
Thailand	1.23	1.21	1.28	1.28	4.36	4.35	4.35	4.35	5.35	5.25	5.55	5.55	0.00	0.00	0.30	5.71
Mexico	8.88	8.65	9.04	9.04	3.69	3.74	3.68	3.68	32.79	32.33	33.24	33.24	0.00	0.00	0.91	2.81
Canada	5.91	5.74	5.22	5.26	4.25	5.32	5.43	5.41	25.12	30.54	28.35	28.43	0.08	0.28	-2.11	-6.91
Australia	6.69	5.74	5.58	5.58	2.87	3.25	2.46	2.46	19.22	18.67	13.74	13.74	0.00	0.00	-4.93	-26.38
Middle East																
Turkey	4.46	4.55	4.56	4.56	2.60	3.25	3.73	3.73	11.58	14.77	16.97	16.97	0.00	0.00	2.20	14.89
Iran	1.91	1.86	1.86	1.86	2.16	2.38	2.38	2.38	4.12	4.42	4.42	4.42	0.00	0.00	0.00	-0.02
Others	73.87	73.24	73.88	73.88	1.72	1.63	1.69	1.70	126.90	119.59	125.09	125.33	0.24	0.19	5.74	4.80

World and Selected Countries and Regions; Coarse Grain includes: Barley, Corn, Millet, Mixed Grains, Oats, Rye and Sorghum

Table 04 Corn Area, Yield, and Production

Country / Region	Area (Million hectares)				Yield (Metric tons per hectare)				Production (Million metric tons)				Change in Production			
	2021/22	Prel.	2023/24 Proj.		2021/22	Prel.	2023/24 Proj.		2021/22	Prel.	2023/24 Proj.		From last month		From last year	
		2022/23	2022/23	Jun		Jul	2022/23	2022/23		Jun	Jul	2022/23	2022/23	Jun	Jul	MMT
World	207.29	201.00	203.74	204.74	5.88	5.72	6.00	5.98	1,218.70	1,150.68	1,222.77	1,224.47	1.70	0.14	73.78	6.41
United States	34.53	32.05	34.03	34.93	11.09	10.88	11.39	11.14	382.89	348.75	387.75	389.15	1.40	0.36	40.40	11.58
Total Foreign	172.76	168.94	169.71	169.81	4.84	4.75	4.92	4.92	835.81	801.93	835.02	835.32	0.30	0.04	33.39	4.16
China	43.32	43.07	43.00	43.00	6.29	6.44	6.51	6.51	272.55	277.20	280.00	280.00	0.00	0.00	2.80	1.01
South America																
Brazil	21.80	22.50	22.90	22.90	5.32	5.91	5.63	5.63	116.00	133.00	129.00	129.00	0.00	0.00	-4.00	-3.01
Argentina	7.10	6.70	7.00	7.00	6.97	5.07	7.71	7.71	49.50	34.00	54.00	54.00	0.00	0.00	20.00	58.82
Bolivia	0.44	0.44	0.44	0.44	2.60	2.64	2.70	2.70	1.13	1.15	1.18	1.18	0.00	0.00	0.03	2.17
European Union	9.23	8.87	8.65	8.55	7.73	5.97	7.43	7.42	71.37	52.97	64.30	63.40	-0.90	-1.40	10.43	19.69
Africa																
South Africa	3.00	3.00	3.00	3.00	5.38	5.67	5.60	5.60	16.14	17.00	16.80	16.80	0.00	0.00	-0.20	-1.18
Nigeria	6.00	5.80	5.70	5.70	2.12	2.20	2.11	2.11	12.75	12.74	12.00	12.00	0.00	0.00	-0.74	-5.77
Ethiopia	2.53	2.55	2.56	2.56	3.72	4.00	4.06	4.06	9.40	10.20	10.40	10.40	0.00	0.00	0.20	1.96
Egypt	0.93	0.93	0.95	0.95	8.00	8.00	8.00	8.00	7.44	7.44	7.60	7.60	0.00	0.00	0.16	2.15
Tanzania	4.40	4.00	4.00	4.00	1.60	1.48	1.48	1.48	7.04	5.90	5.90	5.90	0.00	0.00	0.00	0.00
Malawi	1.75	1.75	1.70	1.70	2.62	2.12	2.00	2.00	4.58	3.72	3.40	3.40	0.00	0.00	-0.32	-8.53
Zambia	1.41	1.37	1.42	1.42	2.57	1.94	2.30	2.30	3.62	2.65	3.26	3.26	0.00	0.00	0.61	22.95
Kenya	2.17	1.90	2.00	2.00	1.52	1.53	1.60	1.60	3.30	2.90	3.20	3.20	0.00	0.00	0.30	10.34
Uganda	1.10	1.10	1.10	1.10	2.55	2.55	2.55	2.55	2.80	2.80	2.80	2.80	0.00	0.00	0.00	0.00
Zimbabwe	1.95	1.90	1.80	1.80	1.39	0.76	0.83	0.83	2.72	1.45	1.50	1.50	0.00	0.00	0.05	3.23
Former Soviet Union - 12																
Ukraine	5.49	4.05	3.80	3.90	7.68	6.67	6.45	6.41	42.13	27.00	24.50	25.00	0.50	2.04	-2.00	-7.41
Russia	2.90	2.64	2.80	2.80	5.25	6.00	5.82	5.82	15.23	15.83	16.30	16.30	0.00	0.00	0.47	2.96
South Asia																
India	9.96	10.10	10.00	10.00	3.39	3.56	3.43	3.43	33.73	36.00	34.30	34.30	0.00	0.00	-1.70	-4.72
Pakistan	1.65	1.60	1.65	1.65	6.43	5.83	6.36	6.36	10.64	9.33	10.50	10.50	0.00	0.00	1.17	12.53
Nepal	0.97	0.97	0.97	0.97	2.82	2.82	2.82	2.82	2.72	2.72	2.72	2.72	0.00	0.00	0.00	0.00
Southeast Asia																
Indonesia	3.90	3.95	4.00	4.00	3.26	3.27	3.28	3.28	12.70	12.90	13.10	13.10	0.00	0.00	0.20	1.55
Philippines	2.56	2.50	2.57	2.57	3.26	3.32	3.27	3.27	8.34	8.30	8.40	8.40	0.00	0.00	0.10	1.20
Vietnam	0.90	0.87	0.83	0.83	4.92	4.97	5.06	5.06	4.45	4.30	4.20	4.20	0.00	0.00	-0.10	-2.33
Thailand	1.20	1.18	1.25	1.25	4.42	4.41	4.40	4.40	5.30	5.20	5.50	5.50	0.00	0.00	0.30	5.77
Mexico	7.09	6.90	7.25	7.25	3.77	3.84	3.78	3.78	26.76	26.50	27.40	27.40	0.00	0.00	0.90	3.40
Canada	1.46	1.44	1.40	1.50	9.99	10.07	10.21	10.00	14.61	14.54	14.30	15.00	0.70	4.90	0.46	3.17
Turkey	0.54	0.53	0.64	0.64	12.04	12.83	12.81	12.81	6.50	6.80	8.20	8.20	0.00	0.00	1.40	20.59
Others	27.01	26.34	26.34	26.34	2.68	2.56	2.67	2.67	72.38	67.39	70.26	70.26	0.00	0.00	2.87	4.26

World and Selected Countries and Regions

Table 05 Barley Area, Yield, and Production

Country / Region	Area (Million hectares)				Yield (Metric tons per hectare)				Production (Million metric tons)				Change in Production			
	Prel.		2023/24 Proj.		Prel.		2023/24 Proj.		Prel.		2023/24 Proj.		From last month		From last year	
	2021/22	2022/23	Jun	Jul	2021/22	2022/23	Jun	Jul	2021/22	2022/23	Jun	Jul	MMT	Percent	MMT	Percent
World	49.82	47.30	46.47	46.51	2.92	3.21	3.18	3.13	145.40	151.89	147.98	145.76	-2.23	-1.50	-6.14	-4.04
United States	0.81	0.99	0.97	1.02	3.25	3.85	4.10	3.77	2.62	3.80	3.98	3.86	-0.13	-3.14	0.06	1.66
Total Foreign	49.01	46.32	45.50	45.49	2.91	3.20	3.16	3.12	142.78	148.10	144.00	141.90	-2.10	-1.46	-6.20	-4.19
European Union	10.30	10.42	10.40	10.29	5.05	4.97	5.08	4.90	52.05	51.79	52.85	50.40	-2.45	-4.64	-1.39	-2.68
United Kingdom	1.15	1.10	1.09	1.09	6.05	6.69	6.59	6.59	6.96	7.39	7.15	7.15	0.00	0.00	-0.24	-3.18
Former Soviet Union - 12																
Russia	7.69	7.75	7.50	7.50	2.28	2.77	2.61	2.61	17.51	21.50	19.60	19.60	0.00	0.00	-1.90	-8.84
Ukraine	2.68	1.95	1.80	1.60	3.70	3.13	3.56	3.56	9.92	6.10	6.40	5.70	-0.70	-10.94	-0.40	-6.56
Kazakhstan	2.16	2.18	2.10	2.10	1.10	1.51	1.43	1.43	2.37	3.29	3.00	3.00	0.00	0.00	-0.29	-8.73
Belarus	0.35	0.40	0.40	0.40	2.86	2.75	2.75	2.75	1.00	1.10	1.10	1.10	0.00	0.00	0.00	0.00
Azerbaijan	0.37	0.38	0.38	0.38	3.07	2.93	2.93	2.93	1.15	1.10	1.10	1.10	0.00	0.00	0.00	0.00
Canada	3.01	2.64	2.60	2.70	2.32	3.79	3.77	3.63	6.98	9.99	9.80	9.80	0.00	0.00	-0.19	-1.87
Australia	5.10	4.10	4.00	4.00	2.81	3.44	2.50	2.50	14.34	14.10	10.00	10.00	0.00	0.00	-4.10	-29.08
Middle East																
Turkey	3.70	3.80	3.70	3.70	1.22	1.95	2.22	2.22	4.50	7.40	8.20	8.20	0.00	0.00	0.80	10.81
Iran	1.70	1.65	1.65	1.65	1.59	1.82	1.82	1.82	2.70	3.00	3.00	3.00	0.00	0.00	0.00	0.00
Iraq	0.60	0.60	0.60	0.60	1.17	1.13	1.33	1.33	0.70	0.68	0.80	0.80	0.00	0.00	0.12	17.65
Syria	1.44	0.90	0.90	0.90	0.18	0.78	1.22	1.22	0.25	0.70	1.10	1.10	0.00	0.00	0.40	57.14
Africa																
Ethiopia	0.96	0.97	0.98	0.98	2.45	2.47	2.46	2.46	2.35	2.40	2.40	2.40	0.00	0.00	0.00	0.00
Morocco	1.49	1.10	1.20	1.20	1.87	0.64	0.92	1.13	2.78	0.70	1.10	1.35	0.25	22.73	0.65	92.86
Algeria	1.03	1.03	1.03	1.03	0.93	1.56	1.00	1.00	0.95	1.60	1.03	1.03	0.00	0.00	-0.58	-35.94
Tunisia	0.28	0.30	0.20	0.20	1.54	1.53	0.85	0.85	0.43	0.46	0.17	0.17	0.00	0.00	-0.29	-63.04
South Africa	0.10	0.10	0.11	0.11	3.52	2.99	3.41	3.41	0.33	0.30	0.38	0.38	0.00	0.00	0.07	24.17
South America																
Argentina	1.34	1.57	1.20	1.40	3.96	2.88	3.75	3.79	5.30	4.50	4.50	5.30	0.80	17.78	0.80	17.78
Uruguay	0.22	0.21	0.19	0.19	4.11	4.25	4.16	4.16	0.92	0.90	0.79	0.79	0.00	0.00	-0.11	-11.93
Brazil	0.11	0.12	0.13	0.13	3.79	3.92	3.96	3.96	0.43	0.48	0.50	0.50	0.00	0.00	0.01	2.70
India	0.59	0.45	0.74	0.74	2.80	3.02	2.30	2.30	1.66	1.37	1.69	1.69	0.00	0.00	0.32	23.36
China	0.51	0.51	0.50	0.50	3.92	3.92	4.00	4.00	2.00	2.00	2.00	2.00	0.00	0.00	0.00	0.00
Mexico	0.35	0.30	0.33	0.33	3.11	2.98	2.92	2.92	1.09	0.88	0.95	0.95	0.00	0.00	0.07	7.95
Afghanistan	0.04	0.08	0.08	0.08	1.63	1.38	1.38	1.38	0.07	0.11	0.11	0.11	0.00	0.00	0.00	0.00
Others	1.75	1.73	1.73	1.73	2.32	2.47	2.49	2.49	4.05	4.27	4.29	4.29	0.00	0.00	0.02	0.54

World and Selected Countries and Regions

Table 06 Oats Area, Yield, and Production

Country / Region	Area (Million hectares)				Yield (Metric tons per hectare)				Production (Million metric tons)				Change in Production			
	Prel.		2023/24 Proj.		Prel.		2023/24 Proj.		Prel.		2023/24 Proj.		From last month		From last year	
	2021/22	2022/23	Jun	Jul	2021/22	2022/23	Jun	Jul	2021/22	2022/23	Jun	Jul	MMT	Percent	MMT	Percent
World	9.63	9.44	9.16	8.94	2.36	2.71	2.54	2.52	22.73	25.57	23.30	22.50	-0.80	-3.42	-3.06	-11.98
United States	0.26	0.36	0.36	0.32	2.20	2.33	2.39	2.26	0.58	0.84	0.87	0.72	-0.15	-16.88	-0.11	-13.50
Total Foreign	9.36	9.08	8.79	8.62	2.37	2.72	2.55	2.53	22.15	24.73	22.43	21.78	-0.65	-2.90	-2.95	-11.93
European Union	2.54	2.37	2.40	2.40	2.95	3.22	3.08	3.08	7.52	7.63	7.40	7.40	0.00	0.00	-0.23	-3.03
Former Soviet Union - 12																
Russia	2.17	2.13	2.10	2.10	1.72	2.11	1.95	1.95	3.73	4.50	4.10	4.10	0.00	0.00	-0.40	-8.89
Ukraine	0.18	0.15	0.15	0.15	2.61	2.47	2.33	2.33	0.48	0.38	0.35	0.35	0.00	0.00	-0.03	-7.89
Belarus	0.15	0.16	0.16	0.16	2.33	2.42	2.26	2.26	0.35	0.38	0.35	0.35	0.00	0.00	-0.03	-6.67
Kazakhstan	0.20	0.20	0.19	0.19	0.90	1.16	1.16	1.16	0.18	0.23	0.22	0.22	0.00	0.00	-0.01	-3.93
Canada	1.21	1.40	1.03	0.85	2.39	3.73	3.56	3.53	2.90	5.23	3.65	3.00	-0.65	-17.81	-2.23	-42.59
South America																
Argentina	0.35	0.28	0.29	0.29	2.07	2.30	2.14	2.14	0.73	0.65	0.61	0.61	0.00	0.00	-0.04	-5.43
Brazil	0.50	0.50	0.51	0.51	2.27	2.38	2.39	2.39	1.14	1.19	1.22	1.22	0.00	0.00	0.03	2.52
Chile	0.12	0.07	0.10	0.10	4.70	4.38	4.74	4.74	0.58	0.32	0.45	0.45	0.00	0.00	0.14	42.86
Uruguay	0.01	0.02	0.02	0.02	2.21	2.40	2.24	2.24	0.03	0.04	0.04	0.04	0.00	0.00	0.00	5.56
Oceania																
Australia	0.84	0.80	0.85	0.85	2.06	2.00	1.76	1.76	1.74	1.60	1.50	1.50	0.00	0.00	-0.10	-6.25
New Zealand	0.00	0.01	0.01	0.01	6.25	5.67	5.67	5.67	0.03	0.03	0.03	0.03	0.00	0.00	0.00	0.00
China	0.41	0.41	0.41	0.41	1.48	1.48	1.48	1.48	0.60	0.60	0.60	0.60	0.00	0.00	0.00	0.00
Africa																
Algeria	0.08	0.08	0.08	0.08	1.31	1.31	1.31	1.31	0.11	0.11	0.11	0.11	0.00	0.00	0.00	0.00
Morocco	0.02	0.02	0.01	0.01	0.33	0.40	0.31	0.31	0.01	0.01	0.00	0.00	0.00	0.00	0.00	-33.33
South Africa	0.04	0.03	0.03	0.03	1.64	1.04	1.50	1.50	0.06	0.03	0.05	0.05	0.00	0.00	0.02	60.71
Other Europe																
United Kingdom	0.20	0.17	0.17	0.17	5.62	5.79	5.45	5.45	1.12	1.01	0.90	0.90	0.00	0.00	-0.11	-10.63
Norway	0.07	0.07	0.07	0.07	4.29	4.29	4.29	4.29	0.30	0.30	0.30	0.30	0.00	0.00	0.00	0.00
Serbia	0.02	0.02	0.02	0.02	3.11	2.80	3.00	3.00	0.06	0.04	0.06	0.06	0.00	0.00	0.02	42.86
Albania	0.02	0.02	0.02	0.02	2.20	2.20	2.27	2.27	0.03	0.03	0.03	0.03	0.00	0.00	0.00	3.03
Bosnia and Herzegovina	0.01	0.01	0.01	0.01	2.82	4.00	3.43	3.43	0.03	0.04	0.02	0.02	0.00	0.00	-0.02	-45.45
Turkey	0.11	0.11	0.11	0.11	2.38	2.38	2.38	2.38	0.25	0.25	0.25	0.25	0.00	0.00	0.00	0.00
Mexico	0.05	0.05	0.05	0.05	2.02	2.00	2.00	2.00	0.09	0.10	0.09	0.09	0.00	0.00	-0.01	-10.00
Others	0.06	0.03	0.06	0.06	1.66	1.63	1.68	1.68	0.10	0.05	0.09	0.09	0.00	0.00	0.04	80.77

World and Selected Countries and Regions

Table 07 Rye Area, Yield, and Production

Country / Region	Area (Million hectares)				Yield (Metric tons per hectare)				Production (Million metric tons)				Change in Production			
	2021/22	Prel.	2023/24 Proj.		2021/22	Prel.	2023/24 Proj.		2021/22	Prel.	2023/24 Proj.		From last month		From last year	
		2022/23	Jun	Jul		2022/23	Jun	Jul		2022/23	Jun	Jul	MMT	Percent	MMT	Percent
World	4.03	3.66	3.66	3.70	3.10	3.32	3.28	3.26	12.51	12.14	12.00	12.09	0.09	0.78	-0.06	-0.46
United States	0.12	0.14	0.12	0.16	2.09	2.26	2.20	2.19	0.25	0.31	0.27	0.36	0.09	34.96	0.05	15.06
Total Foreign	3.92	3.53	3.54	3.54	3.13	3.36	3.31	3.31	12.26	11.83	11.73	11.73	0.00	0.00	-0.10	-0.87
European Union	1.93	1.76	1.83	1.83	4.15	4.28	4.23	4.23	8.01	7.54	7.75	7.75	0.00	0.00	0.21	2.84
Former Soviet Union - 12																
Russia	0.99	0.88	0.88	0.88	1.73	2.27	2.17	2.17	1.72	2.00	1.90	1.90	0.00	0.00	-0.10	-5.00
Belarus	0.33	0.30	0.31	0.31	2.46	2.50	2.52	2.52	0.80	0.75	0.78	0.78	0.00	0.00	0.03	4.00
Ukraine	0.18	0.10	0.08	0.08	3.43	3.15	2.88	2.88	0.60	0.32	0.23	0.23	0.00	0.00	-0.09	-26.98
Kazakhstan	0.04	0.03	0.03	0.03	0.91	1.76	1.33	1.33	0.04	0.06	0.04	0.04	0.00	0.00	-0.02	-33.33
Turkey	0.12	0.11	0.11	0.11	2.87	2.91	2.91	2.91	0.33	0.32	0.32	0.32	0.00	0.00	0.00	0.00
Canada	0.12	0.15	0.12	0.12	3.21	3.42	3.26	3.26	0.37	0.52	0.38	0.38	0.00	0.00	-0.15	-27.88
South America																
Chile	0.00	0.00	0.00	0.00	5.00	5.00	0.00	0.00	0.01	0.01	0.00	0.00	0.00	100.00	-0.01	-100.00
Argentina	0.12	0.09	0.09	0.09	1.88	1.84	1.83	1.83	0.23	0.16	0.17	0.17	0.00	0.00	0.01	3.13
Other Europe																
Bosnia and Herzegovina	0.00	0.00	0.00	0.00	3.00	3.00	3.00	3.00	0.01	0.01	0.01	0.01	0.00	0.00	0.00	0.00
Switzerland	0.00	0.00	0.00	0.00	5.50	5.50	5.50	5.50	0.01	0.01	0.01	0.01	0.00	0.00	0.00	0.00
Serbia	0.01	0.01	0.01	0.01	3.80	3.00	3.33	3.33	0.02	0.02	0.02	0.02	0.00	0.00	0.00	11.11
Australia	0.05	0.05	0.05	0.05	0.71	0.71	0.71	0.71	0.03	0.03	0.03	0.03	0.00	0.00	0.00	0.00
Others	0.04	0.04	0.04	0.04	2.18	2.18	2.20	2.20	0.10	0.10	0.10	0.10	0.00	0.00	0.00	1.04

World and Selected Countries and Regions

Table 08 Sorghum Area, Yield, and Production

Country / Region	Area (Million hectares)				Yield (Metric tons per hectare)				Production (Million metric tons)				Change in Production			
	Prel.		2023/24 Proj.		Prel.		2023/24 Proj.		Prel.		2023/24 Proj.		From last month		From last year	
	2021/22	2022/23	Jun	Jul	2021/22	2022/23	Jun	Jul	2021/22	2022/23	Jun	Jul	MMT	Percent	MMT	Percent
World	40.75	40.28	41.44	41.74	1.53	1.42	1.50	1.52	62.30	57.16	62.17	63.46	1.29	2.07	6.29	11.01
United States	2.63	1.85	2.10	2.40	4.33	2.58	4.35	4.34	11.38	4.77	9.14	10.44	1.30	14.17	5.67	118.87
Total Foreign	38.13	38.43	39.34	39.34	1.34	1.36	1.35	1.35	50.92	52.39	53.03	53.02	-0.01	-0.02	0.62	1.19
Africa																
Nigeria	5.70	5.70	5.70	5.70	1.18	1.18	1.18	1.18	6.73	6.74	6.70	6.70	0.00	0.00	-0.04	-0.62
Ethiopia	1.65	1.66	1.66	1.66	2.70	2.53	2.65	2.65	4.45	4.20	4.40	4.40	0.00	0.00	0.20	4.76
Sudan	6.92	7.00	7.50	7.50	0.51	0.75	0.67	0.67	3.53	5.25	5.00	5.00	0.00	0.00	-0.25	-4.73
Burkina Faso	1.90	1.90	1.90	1.90	0.87	1.06	1.00	1.00	1.64	2.01	1.90	1.90	0.00	0.00	-0.11	-5.66
Mali	1.55	1.50	1.50	1.50	0.81	1.05	1.00	1.00	1.25	1.58	1.50	1.50	0.00	0.00	-0.08	-5.18
Niger	3.52	3.70	3.70	3.70	0.34	0.32	0.51	0.51	1.21	1.20	1.90	1.90	0.00	0.00	0.70	58.33
Cameroon	0.74	0.74	0.74	0.74	1.62	1.62	1.62	1.62	1.20	1.20	1.20	1.20	0.00	0.00	0.00	0.00
Tanzania	1.04	1.00	1.00	1.00	1.04	1.00	1.00	1.00	1.08	1.00	1.00	1.00	0.00	0.00	0.00	0.00
Egypt	0.16	0.15	0.15	0.15	4.90	5.00	5.00	5.00	0.77	0.75	0.75	0.75	0.00	0.00	0.00	0.00
Uganda	0.25	0.25	0.25	0.25	1.32	0.90	0.90	0.90	0.33	0.23	0.23	0.23	0.00	0.00	0.00	0.00
Ghana	0.31	0.31	0.31	0.31	1.05	1.49	1.13	1.13	0.32	0.46	0.35	0.35	0.00	0.00	-0.11	-24.41
Mozambique	0.25	0.15	0.25	0.25	0.64	1.04	0.64	0.64	0.16	0.15	0.16	0.16	0.00	0.00	0.01	4.58
South Africa	0.04	0.04	0.04	0.04	2.78	3.00	3.75	3.75	0.10	0.11	0.15	0.15	0.00	0.00	0.05	42.86
Mexico	1.40	1.40	1.42	1.42	3.47	3.46	3.38	3.38	4.84	4.85	4.80	4.80	0.00	0.00	-0.05	-1.03
South America																
Argentina	0.93	0.85	0.80	0.80	3.68	4.00	4.13	4.13	3.40	3.40	3.30	3.30	0.00	0.00	-0.10	-2.94
Brazil	0.95	1.07	1.23	1.23	3.20	2.72	2.93	2.93	3.04	2.92	3.60	3.60	0.00	0.00	0.68	23.29
South Asia																
India	3.80	3.75	4.10	4.10	1.09	1.07	1.07	1.07	4.15	4.00	4.40	4.40	0.00	0.00	0.40	10.00
Pakistan	0.08	0.22	0.22	0.22	0.83	0.63	0.63	0.63	0.06	0.14	0.14	0.14	0.00	0.00	0.00	0.00
China	0.63	0.63	0.63	0.63	4.76	4.76	4.76	4.76	3.00	3.00	3.00	3.00	0.00	0.00	0.00	0.00
Australia	0.62	0.70	0.60	0.60	4.26	3.57	3.00	3.00	2.65	2.50	1.80	1.80	0.00	0.00	-0.70	-28.00
European Union	0.15	0.13	0.15	0.15	5.41	4.27	5.00	5.00	0.80	0.55	0.75	0.75	0.00	0.00	0.20	36.12
Others	5.57	5.59	5.49	5.49	1.12	1.10	1.09	1.09	6.22	6.16	6.01	6.00	-0.01	-0.17	-0.16	-2.58

World and Selected Countries and Regions

Table 09 Rice Area, Yield, and Production
World and Selected Countries and Regions

Country / Region	Area (Million hectares)				Yield (Metric tons per hectare)				Production (Million metric tons)				Change in Production			
	Prel.		2023/24 Proj.		Prel.		2023/24 Proj.		Prel.		2023/24 Proj.		From last month		From last year	
	2021/22	2022/23	Jun	Jul	2021/22	2022/23	Jun	Jul	2021/22	2022/23	Jun	Jul	MMT	Percent	MMT	Percent
World	165.39	165.25	166.08	166.12	4.64	4.63	4.68	4.68	513.74	512.49	520.49	520.77	0.28	0.05	8.28	1.61
United States	1.01	0.88	1.03	1.07	8.64	8.28	8.50	8.52	6.08	5.09	6.12	6.38	0.26	4.30	1.29	25.33
Total Foreign	164.38	164.37	165.05	165.05	4.61	4.61	4.66	4.66	507.66	507.40	514.37	514.39	0.01	0.00	6.99	1.38
East Asia																
China	29.92	29.45	29.85	29.85	7.11	7.08	7.13	7.13	148.99	145.95	149.00	149.00	0.00	0.00	3.05	2.09
Japan	1.52	1.50	1.48	1.48	6.90	6.86	6.91	6.91	7.64	7.48	7.45	7.45	0.00	0.00	-0.03	-0.40
Korea, South	0.73	0.73	0.70	0.71	7.12	6.88	6.77	6.77	3.88	3.76	3.57	3.60	0.03	0.81	-0.16	-4.36
Korea, North	0.50	0.50	0.50	0.50	4.18	4.18	4.18	4.18	1.36	1.36	1.36	1.36	0.00	0.00	0.00	0.00
South Asia																
India	46.28	47.70	47.00	47.00	4.20	4.28	4.28	4.28	129.47	136.00	134.00	134.00	0.00	0.00	-2.00	-1.47
Bangladesh	11.62	11.60	11.85	11.85	4.63	4.70	4.68	4.68	35.85	36.35	37.00	37.00	0.00	0.00	0.65	1.79
Pakistan	3.54	3.00	3.50	3.50	3.95	2.75	3.86	3.86	9.32	5.50	9.00	9.00	0.00	0.00	3.50	63.64
Nepal	1.48	1.45	1.45	1.45	3.47	3.79	3.79	3.79	3.42	3.65	3.65	3.65	0.00	0.00	0.00	0.00
Sri Lanka	1.13	1.09	1.10	1.10	3.56	3.76	4.09	4.09	2.73	2.78	3.06	3.06	0.00	0.00	0.28	9.95
Southeast Asia																
Indonesia	11.60	11.55	11.60	11.60	4.67	4.64	4.68	4.68	34.40	34.00	34.45	34.45	0.00	0.00	0.45	1.32
Vietnam	7.10	7.17	7.16	7.16	6.01	6.03	6.03	6.03	26.67	27.00	27.00	27.00	0.00	0.00	0.00	0.00
Thailand	10.70	10.85	10.60	10.60	2.81	2.82	2.82	2.82	19.88	20.20	19.70	19.70	0.00	0.00	-0.50	-2.48
Burma	7.00	6.80	7.00	7.00	2.77	2.71	2.79	2.79	12.40	11.80	12.50	12.50	0.00	0.00	0.70	5.93
Philippines	4.80	4.85	4.80	4.80	4.15	4.12	4.17	4.17	12.54	12.60	12.60	12.60	0.00	0.00	0.00	0.00
Cambodia	3.27	3.31	3.37	3.37	2.89	2.94	2.92	2.92	5.77	5.93	6.00	6.00	0.00	0.00	0.07	1.13
Laos	0.94	0.95	0.96	0.96	3.28	3.26	3.26	3.26	1.95	1.95	1.96	1.96	0.00	0.00	0.01	0.51
Malaysia	0.65	0.66	0.66	0.66	3.97	3.99	4.08	4.08	1.68	1.70	1.75	1.75	0.00	0.00	0.05	2.94
South America																
Brazil	1.62	1.47	1.40	1.40	6.67	6.80	7.14	7.14	7.34	6.80	6.80	6.80	0.00	0.00	0.00	0.00
Peru	0.42	0.42	0.43	0.43	8.37	8.55	8.52	8.52	2.43	2.48	2.50	2.50	0.00	0.00	0.02	0.64
Africa																
Egypt	0.50	0.60	0.63	0.63	8.41	8.70	8.70	8.70	2.90	3.60	3.78	3.78	0.00	0.00	0.18	5.00
Madagascar	1.60	1.60	1.60	1.60	2.74	2.75	2.75	2.75	2.81	2.82	2.82	2.82	0.00	0.00	0.00	0.00
Nigeria	3.65	3.50	3.50	3.50	2.29	2.43	2.37	2.37	5.26	5.36	5.23	5.23	0.00	0.00	-0.13	-2.35
European Union	0.40	0.33	0.35	0.35	6.64	6.32	6.51	6.51	1.73	1.34	1.46	1.46	0.00	0.00	0.12	9.28
Iran	0.56	0.57	0.57	0.57	5.14	5.32	5.26	5.26	1.90	2.00	1.98	1.98	0.00	0.00	-0.02	-1.00
Others	12.85	12.73	13.01	13.00	2.99	2.98	3.00	3.00	25.35	24.99	25.75	25.74	-0.02	-0.06	0.75	2.99

Yield is on a rough basis, before the milling process. Production is on a milled basis, after the milling process.

Table 10 Total Oilseed Area, Yield, and Production

World and Selected Countries and Regions

Country / Region	Area (Million hectares)				Yield (Metric tons per hectare)				Production (Million metric tons)				Change in Production			
	2021/22	Prel.	2023/24 Proj.		2021/22	Prel.	2023/24 Proj.		2021/22	Prel.	2023/24 Proj.		From last month		From last year	
		2022/23	Jun	Jul		2022/23	Jun	Jul		2022/23	Jun	Jul	MMT	Percent	MMT	Percent
World Total	--	--	--	--	--	--	--	--	611.07	629.52	671.38	667.32	-4.05	-0.60	37.80	6.01
Total Foreign	--	--	--	--	--	--	--	--	479.72	503.59	538.17	539.67	1.50	0.28	36.08	7.16
Oilseed, Copra	--	--	--	--	--	--	--	--	6.07	6.03	6.05	6.05	0.00	0.00	0.02	0.36
Oilseed, Palm Kernel	--	--	--	--	--	--	--	--	19.14	20.03	20.30	20.51	0.21	1.03	0.47	2.37
Major Oilseeds	260.73	266.46	270.84	270.57	2.25	2.26	2.38	2.37	585.87	603.46	645.03	640.77	-4.26	-0.66	37.31	6.18
United States	41.06	39.99	40.91	39.38	3.20	3.15	3.26	3.24	131.35	125.93	133.20	127.65	-5.55	-4.17	1.72	1.37
Foreign Oilseeds	219.66	226.47	229.92	231.18	2.07	2.11	2.23	2.22	454.52	477.53	511.83	513.12	1.29	0.25	35.59	7.45
South America	68.95	70.36	73.73	73.73	2.86	2.95	3.25	3.25	197.26	207.23	239.61	239.65	0.04	0.02	32.41	15.64
Brazil	43.46	45.80	47.51	47.51	3.11	3.53	3.54	3.54	135.33	161.50	168.35	168.35	0.00	0.00	6.85	4.24
Argentina	18.77	17.98	19.16	19.16	2.66	1.74	2.80	2.81	49.85	31.23	53.74	53.78	0.04	0.08	22.55	72.18
Paraguay	3.51	3.56	3.65	3.65	1.23	2.52	2.78	2.78	4.31	8.97	10.14	10.14	0.00	0.00	1.18	13.10
Bolivia	1.69	1.57	1.63	1.63	2.25	2.10	2.13	2.13	3.80	3.30	3.48	3.48	0.00	0.00	0.18	5.37
Uruguay	1.38	1.31	1.64	1.64	2.63	1.44	2.15	2.15	3.62	1.88	3.53	3.53	0.00	0.00	1.65	87.77
China	24.02	26.31	26.37	26.37	2.58	2.60	2.55	2.55	62.07	68.51	67.17	67.17	0.00	0.00	-1.34	-1.96
South Asia	41.80	43.68	43.41	43.91	1.11	1.02	1.06	1.05	46.59	44.70	45.92	46.18	0.26	0.57	1.49	3.33
India	38.48	40.33	39.87	39.87	1.10	1.02	1.04	1.04	42.19	41.09	41.34	41.34	0.00	0.00	0.25	0.60
Pakistan	2.59	2.43	2.62	3.12	1.31	0.96	1.28	1.16	3.38	2.34	3.35	3.61	0.26	7.77	1.26	53.88
European Union	11.09	12.55	12.71	12.70	2.80	2.54	2.85	2.79	31.04	31.90	36.19	35.39	-0.80	-2.22	3.49	10.93
United Kingdom	0.31	0.36	0.41	0.41	3.20	3.74	3.50	3.40	0.98	1.36	1.44	1.40	-0.04	-2.79	0.03	2.50
Former Soviet Union - 12	27.74	27.62	28.02	28.67	1.89	1.86	1.82	1.83	52.46	51.34	51.04	52.44	1.40	2.74	1.10	2.14
Russia	14.23	14.74	15.00	15.00	1.62	1.78	1.74	1.74	23.11	26.25	26.10	26.10	0.00	0.00	-0.15	-0.57
Ukraine	9.58	8.75	8.85	9.50	2.54	2.26	2.21	2.21	24.32	19.80	19.60	21.00	1.40	7.14	1.20	6.06
Uzbekistan	1.08	1.09	1.05	1.05	1.11	1.27	1.21	1.21	1.20	1.38	1.26	1.26	0.00	0.00	-0.12	-8.67
Canada	11.06	10.76	11.04	11.08	1.81	2.38	2.44	2.44	20.05	25.63	26.89	27.08	0.19	0.71	1.45	5.65
Africa	24.56	23.87	23.95	24.15	0.98	1.05	1.06	1.06	24.15	24.97	25.33	25.69	0.37	1.44	0.72	2.90
Nigeria	4.97	4.87	4.92	4.87	1.11	1.15	1.16	1.15	5.50	5.61	5.70	5.60	-0.10	-1.75	-0.01	-0.25
South Africa	1.76	1.88	1.85	1.98	1.92	2.04	2.04	2.03	3.37	3.82	3.78	4.02	0.24	6.36	0.19	5.05
Tanzania	1.24	1.35	1.35	1.35	0.98	0.93	0.93	0.93	1.21	1.25	1.25	1.25	0.00	0.00	0.00	0.00
Southeast Asia	3.12	3.08	3.05	3.05	1.36	1.36	1.39	1.39	4.23	4.18	4.23	4.23	0.00	0.00	0.05	1.12
Burma	1.95	1.94	1.95	1.95	1.16	1.18	1.24	1.24	2.25	2.28	2.41	2.41	0.00	0.00	0.13	5.47
Indonesia	0.90	0.87	0.84	0.84	1.55	1.52	1.49	1.49	1.39	1.32	1.26	1.26	0.00	0.00	-0.07	-4.92
Australia	3.94	4.61	4.21	4.07	2.20	2.20	1.60	1.62	8.68	10.14	6.73	6.61	-0.12	-1.78	-3.53	-34.81
Turkey	1.32	1.48	1.24	1.24	2.55	2.69	2.68	2.68	3.37	3.98	3.34	3.34	0.00	0.00	-0.64	-16.13
Others	1.76	1.78	1.79	1.79	2.06	2.02	2.21	2.21	3.63	3.60	3.95	3.95	0.00	0.00	0.35	9.80

World Total and Total Foreign: (Major Oilseeds plus copra and palm kernel) Major Oilseeds: (soybeans, sunflowerseeds, peanuts(inshell), cottonseed and rapeseed)

Table 11 Soybean Area, Yield, and Production

Country / Region	Area (Million hectares)				Yield (Metric tons per hectare)				Production (Million metric tons)				Change in Production			
	Prel.		2023/24 Proj.		Prel.		2023/24 Proj.		Prel.		2023/24 Proj.		From last month		From last year	
	2021/22	2022/23	Jun	Jul	2021/22	2022/23	Jun	Jul	2021/22	2022/23	Jun	Jul	MMT	Percent	MMT	Percent
World	131.13	136.03	139.82	138.33	2.75	2.72	2.94	2.93	360.12	369.72	410.70	405.31	-5.39	-1.31	35.59	9.63
United States	34.93	34.94	35.09	33.47	3.48	3.33	3.50	3.50	121.53	116.38	122.74	117.03	-5.72	-4.66	0.65	0.56
Total Foreign	96.20	101.09	104.74	104.86	2.48	2.51	2.75	2.75	238.59	253.34	287.96	288.28	0.33	0.11	34.94	13.79
South America																
Brazil	41.60	43.90	45.60	45.60	3.14	3.55	3.57	3.57	130.50	156.00	163.00	163.00	0.00	0.00	7.00	4.49
Argentina	15.90	15.00	16.40	16.40	2.76	1.67	2.93	2.93	43.90	25.00	48.00	48.00	0.00	0.00	23.00	92.00
Paraguay	3.42	3.45	3.55	3.55	1.22	2.55	2.82	2.82	4.18	8.80	10.00	10.00	0.00	0.00	1.20	13.64
Bolivia	1.55	1.43	1.50	1.50	2.32	2.17	2.20	2.20	3.60	3.10	3.30	3.30	0.00	0.00	0.20	6.45
Uruguay	1.16	0.90	1.28	1.28	2.80	1.33	2.27	2.27	3.23	1.20	2.90	2.90	0.00	0.00	1.70	141.67
East Asia																
China	8.42	10.24	10.45	10.45	1.95	1.98	1.96	1.96	16.40	20.28	20.50	20.50	0.00	0.00	0.22	1.08
Korea, South	0.05	0.06	0.07	0.07	2.06	2.03	1.93	1.93	0.11	0.13	0.13	0.13	0.00	0.00	0.00	0.77
Korea, North	0.17	0.16	0.16	0.16	1.15	1.15	1.15	1.15	0.19	0.18	0.18	0.18	0.00	0.00	0.00	0.00
Japan	0.15	0.15	0.16	0.16	1.63	1.58	1.63	1.63	0.24	0.24	0.25	0.25	0.00	0.00	0.02	6.30
India	12.15	13.00	12.50	12.50	0.98	0.93	0.96	0.96	11.89	12.04	12.00	12.00	0.00	0.00	-0.04	-0.32
Canada	2.08	2.12	2.20	2.25	2.99	3.09	2.95	2.98	6.22	6.54	6.50	6.70	0.20	3.08	0.16	2.40
Former Soviet Union - 12																
Russia	2.99	3.36	3.40	3.40	1.59	1.79	1.74	1.74	4.76	6.00	5.90	5.90	0.00	0.00	-0.10	-1.60
Ukraine	1.44	1.82	2.00	2.00	2.64	2.25	2.30	2.30	3.80	4.10	4.60	4.60	0.00	0.00	0.50	12.20
European Union	1.01	1.13	1.15	1.15	2.82	2.26	2.80	2.80	2.83	2.55	3.22	3.22	0.00	0.00	0.66	25.88
Southeast Asia																
Indonesia	0.35	0.33	0.32	0.32	1.21	1.18	1.17	1.17	0.43	0.39	0.38	0.38	0.00	0.00	-0.02	-3.85
Vietnam	0.03	0.03	0.03	0.03	1.61	1.60	1.61	1.61	0.05	0.05	0.05	0.05	0.00	0.00	0.00	-6.25
Thailand	0.03	0.03	0.03	0.03	1.63	1.63	1.63	1.63	0.05	0.05	0.05	0.05	0.00	0.00	0.00	0.00
Burma	0.13	0.13	0.12	0.12	1.04	1.04	1.04	1.04	0.14	0.13	0.13	0.13	0.00	0.00	-0.01	-3.85
Serbia	0.24	0.24	0.24	0.24	2.28	1.70	3.09	3.09	0.54	0.40	0.73	0.73	0.00	0.00	0.33	81.70
Mexico	0.18	0.12	0.15	0.15	1.57	1.52	1.57	1.57	0.29	0.18	0.24	0.24	0.00	0.00	0.06	34.29
Africa																
South Africa	0.93	1.15	1.20	1.20	2.41	2.40	2.33	2.33	2.23	2.76	2.80	2.80	0.00	0.00	0.05	1.63
Nigeria	1.20	1.20	1.20	1.15	0.93	0.98	1.04	1.00	1.12	1.18	1.25	1.15	-0.10	-8.00	-0.03	-2.54
Zambia	0.30	0.38	0.38	0.38	1.35	1.27	1.27	1.27	0.41	0.48	0.48	0.48	0.00	0.00	0.00	0.00
Uganda	0.05	0.05	0.05	0.05	0.60	0.60	0.60	0.60	0.03	0.03	0.03	0.03	0.00	0.00	0.00	0.00
Middle East																
Iran	0.07	0.08	0.07	0.07	2.29	2.27	2.36	2.36	0.16	0.17	0.17	0.17	0.00	0.00	-0.01	-2.94
Turkey	0.03	0.04	0.03	0.03	3.91	4.14	4.12	4.12	0.13	0.15	0.14	0.14	0.00	0.00	-0.01	-3.45
Others	0.59	0.63	0.52	0.65	1.99	1.96	2.04	1.99	1.17	1.23	1.06	1.29	0.23	21.19	0.06	4.46

World and Selected Countries and Regions

Table 12 Cottonseed Area, Yield, and Production

Country / Region	Area (Million hectares)				Yield (Metric tons per hectare)				Production (Million metric tons)				Change in Production			
	Prel.		2023/24 Proj.		Prel.		2023/24 Proj.		Prel.		2023/24 Proj.		From last month		From last year	
	2021/22	2022/23	Jun	Jul	2021/22	2022/23	Jun	Jul	2021/22	2022/23	Jun	Jul	MMT	Percent	MMT	Percent
World	31.93	31.20	31.35	31.76	1.31	1.38	1.36	1.35	41.86	43.07	42.67	42.81	0.14	0.32	-0.27	-0.62
United States	4.16	2.96	3.81	3.86	1.16	1.35	1.24	1.24	4.83	4.01	4.74	4.80	0.06	1.24	0.79	19.83
Total Foreign	27.78	28.24	27.54	27.91	1.33	1.38	1.38	1.36	37.03	39.07	37.93	38.01	0.08	0.20	-1.06	-2.71
South Asia																
India	12.37	13.00	12.40	12.40	0.84	0.85	0.87	0.87	10.36	11.04	10.83	10.83	0.00	0.00	-0.21	-1.92
Pakistan	2.00	1.80	2.00	2.50	1.30	0.94	1.28	1.13	2.60	1.69	2.56	2.82	0.26	10.17	1.13	66.73
China	3.10	3.15	2.90	2.90	3.39	3.82	3.65	3.65	10.50	12.03	10.58	10.58	0.00	0.00	-1.45	-12.05
Former Soviet Union - 12																
Uzbekistan	1.06	1.07	1.03	1.03	1.07	1.24	1.18	1.18	1.14	1.33	1.21	1.21	0.00	0.00	-0.12	-8.86
Turkmenistan	0.55	0.55	0.55	0.55	0.64	0.64	0.64	0.64	0.35	0.35	0.35	0.35	0.00	0.00	0.00	0.00
Tajikistan	0.17	0.17	0.17	0.17	1.09	1.11	1.15	1.15	0.19	0.19	0.20	0.20	0.00	0.00	0.01	3.72
Kazakhstan	0.11	0.13	0.12	0.12	0.84	1.05	0.94	0.94	0.09	0.13	0.11	0.11	0.00	0.00	-0.02	-13.74
South America																
Brazil	1.60	1.64	1.63	1.63	2.43	2.77	2.70	2.70	3.89	4.55	4.40	4.40	0.00	0.00	-0.15	-3.28
Argentina	0.48	0.40	0.41	0.41	1.06	0.93	1.17	1.03	0.51	0.37	0.48	0.42	-0.06	-12.27	0.05	14.05
Middle East																
Turkey	0.45	0.56	0.43	0.43	2.76	2.88	2.69	2.69	1.24	1.60	1.14	1.14	0.00	0.00	-0.46	-28.56
Syria	0.03	0.03	0.03	0.03	2.20	2.20	2.20	2.20	0.06	0.06	0.06	0.06	0.00	0.00	0.00	0.00
Iran	0.10	0.10	0.10	0.10	1.35	1.35	1.18	1.18	0.14	0.14	0.12	0.12	0.00	0.00	-0.02	-12.59
Australia	0.64	0.65	0.65	0.52	2.77	2.68	2.68	3.15	1.76	1.74	1.74	1.62	-0.12	-6.89	-0.12	-6.89
European Union	0.32	0.31	0.29	0.29	1.66	1.70	1.64	1.64	0.53	0.53	0.48	0.48	0.00	-0.84	-0.05	-9.52
Africa																
Burkina Faso	0.60	0.62	0.61	0.61	0.45	0.35	0.42	0.42	0.27	0.21	0.26	0.26	0.00	0.00	0.04	19.16
Mali	0.72	0.60	0.70	0.70	0.56	0.35	0.50	0.50	0.40	0.21	0.35	0.35	0.00	0.00	0.15	69.71
Cameroon	0.23	0.23	0.23	0.23	1.39	1.29	1.30	1.30	0.32	0.30	0.30	0.30	0.00	0.00	0.00	0.00
Cote d'Ivoire	0.47	0.41	0.39	0.39	0.60	0.29	0.52	0.52	0.28	0.12	0.20	0.20	0.00	0.00	0.08	70.59
Benin	0.64	0.57	0.64	0.64	0.73	0.64	0.72	0.72	0.47	0.36	0.46	0.46	0.00	0.00	0.10	27.20
Tanzania	0.24	0.35	0.35	0.35	0.46	0.43	0.43	0.43	0.11	0.15	0.15	0.15	0.00	0.00	0.00	0.00
Egypt	0.09	0.14	0.15	0.15	1.00	0.92	0.92	0.92	0.09	0.13	0.14	0.14	0.00	0.00	0.01	6.98
Nigeria	0.27	0.27	0.27	0.27	0.56	0.56	0.56	0.56	0.15	0.15	0.15	0.15	0.00	0.00	0.00	0.00
Uganda	0.10	0.10	0.10	0.10	1.49	1.49	1.49	1.49	0.15	0.15	0.15	0.15	0.00	0.00	0.00	0.00
Zimbabwe	0.25	0.24	0.24	0.24	0.33	0.34	0.34	0.34	0.08	0.08	0.08	0.08	0.00	0.00	0.00	0.00
Sudan	0.20	0.20	0.20	0.20	1.53	1.53	1.53	1.53	0.31	0.31	0.31	0.31	0.00	0.00	0.00	0.00
Mexico	0.15	0.20	0.17	0.17	2.71	2.70	2.56	2.56	0.42	0.54	0.44	0.44	0.00	0.00	-0.11	-19.44
Burma	0.16	0.15	0.16	0.16	0.81	0.76	1.25	1.25	0.13	0.11	0.19	0.19	0.00	0.00	0.08	70.18
Others	0.70	0.62	0.64	0.64	0.74	0.82	0.78	0.78	0.52	0.50	0.50	0.50	0.00	0.00	-0.01	-1.39

World and Selected Countries and Regions

Table 13 Peanut Area, Yield, and Production

Country / Region	Area (Million hectares)				Yield (Metric tons per hectare)				Production (Million metric tons)				Change in Production			
	Prel.		2023/24 Proj.		Prel.		2023/24 Proj.		Prel.		2023/24 Proj.		From last month		From last year	
	2021/22	2022/23	Jun	Jul	2021/22	2022/23	Jun	Jul	2021/22	2022/23	Jun	Jul	MMT	Percent	MMT	Percent
World	30.63	29.04	29.64	29.66	1.69	1.70	1.70	1.70	51.85	49.31	50.44	50.54	0.10	0.20	1.23	2.49
United States	0.62	0.56	0.60	0.62	4.63	4.50	4.74	4.74	2.89	2.53	2.85	2.95	0.10	3.47	0.42	16.71
Total Foreign	30.01	28.48	29.04	29.04	1.63	1.64	1.64	1.64	48.96	46.78	47.59	47.59	0.00	0.00	0.80	1.72
China	4.81	4.80	4.82	4.82	3.81	3.81	3.80	3.80	18.31	18.30	18.30	18.30	0.00	0.00	0.00	0.00
Africa																
Nigeria	3.50	3.40	3.45	3.45	1.21	1.26	1.25	1.25	4.23	4.28	4.30	4.30	0.00	0.00	0.02	0.37
Sudan	3.94	3.00	3.00	3.00	0.60	0.83	0.83	0.83	2.36	2.50	2.50	2.50	0.00	0.00	0.00	0.00
Senegal	1.21	1.23	1.23	1.23	1.38	1.23	1.40	1.40	1.68	1.50	1.72	1.72	0.00	0.00	0.21	14.18
Cameroon	0.43	0.43	0.43	0.43	1.40	1.40	1.40	1.40	0.60	0.60	0.60	0.60	0.00	0.00	0.00	0.00
Ghana	0.34	0.37	0.37	0.37	1.48	1.65	1.62	1.62	0.50	0.61	0.60	0.60	0.00	0.00	-0.01	-1.80
Chad	0.75	0.76	0.76	0.76	1.06	1.10	1.09	1.09	0.80	0.83	0.83	0.83	0.00	0.00	0.00	0.12
Malawi	0.40	0.40	0.40	0.40	0.88	0.88	0.88	0.88	0.35	0.35	0.35	0.35	0.00	0.00	0.00	0.00
Congo (Kinshasa)	0.52	0.53	0.53	0.53	0.92	0.91	0.91	0.91	0.48	0.48	0.48	0.48	0.00	0.00	0.00	0.00
Niger	0.92	0.97	0.92	0.92	0.56	0.69	0.65	0.65	0.52	0.67	0.60	0.60	0.00	0.00	-0.07	-10.58
Mali	0.44	0.43	0.43	0.43	0.78	1.04	1.00	1.00	0.35	0.44	0.43	0.43	0.00	0.00	-0.02	-4.06
Uganda	0.33	0.35	0.35	0.35	0.59	0.57	0.57	0.57	0.19	0.20	0.20	0.20	0.00	0.00	0.00	0.00
Burkina Faso	0.58	0.63	0.64	0.64	0.83	0.89	0.90	0.90	0.48	0.56	0.58	0.58	0.00	0.00	0.02	2.86
Guinea	0.79	0.90	0.90	0.90	1.15	1.14	1.11	1.11	0.91	1.03	1.00	1.00	0.00	0.00	-0.03	-2.44
Egypt	0.06	0.06	0.06	0.06	3.42	3.20	3.20	3.20	0.21	0.21	0.21	0.21	0.00	0.00	0.00	0.00
Central African Republic	0.13	0.13	0.13	0.13	1.15	1.15	1.15	1.15	0.15	0.15	0.15	0.15	0.00	0.00	0.00	0.00
South Africa	0.04	0.03	0.04	0.04	1.51	2.23	2.00	2.00	0.07	0.07	0.07	0.07	0.00	0.00	0.00	1.45
Mozambique	0.38	0.38	0.38	0.38	0.34	0.34	0.34	0.34	0.13	0.13	0.13	0.13	0.00	0.00	0.00	0.00
Cote d'Ivoire	0.17	0.17	0.17	0.17	1.42	1.47	1.45	1.45	0.23	0.24	0.24	0.24	0.00	0.00	0.00	-1.23
Benin	0.17	0.17	0.18	0.18	1.05	0.96	0.97	0.97	0.18	0.16	0.18	0.18	0.00	0.00	0.01	6.71
South Asia																
India	5.71	5.00	5.50	5.50	1.52	1.26	1.20	1.20	8.70	6.30	6.60	6.60	0.00	0.00	0.30	4.76
Pakistan	0.15	0.13	0.13	0.13	0.94	0.88	0.88	0.88	0.15	0.12	0.12	0.12	0.00	0.00	0.00	0.00
Southeast Asia																
Indonesia	0.55	0.54	0.52	0.52	1.76	1.72	1.69	1.69	0.96	0.93	0.88	0.88	0.00	0.00	-0.05	-5.38
Burma	1.06	1.07	1.07	1.07	1.51	1.55	1.59	1.59	1.60	1.65	1.70	1.70	0.00	0.00	0.05	3.03
Vietnam	0.16	0.16	0.15	0.15	2.58	2.58	2.60	2.60	0.41	0.40	0.39	0.39	0.00	0.00	-0.01	-2.50
Thailand	0.02	0.02	0.02	0.02	1.67	1.67	1.67	1.67	0.04	0.04	0.04	0.04	0.00	0.00	0.00	0.00
South America																
Argentina	0.41	0.36	0.38	0.38	3.29	2.57	3.47	3.47	1.34	0.93	1.32	1.32	0.00	0.00	0.40	42.70
Brazil	0.22	0.22	0.24	0.24	4.09	4.05	3.79	3.79	0.90	0.89	0.89	0.89	0.00	0.00	0.00	0.00
Mexico	0.06	0.05	0.05	0.05	1.63	1.87	1.74	1.74	0.10	0.10	0.09	0.09	0.00	0.00	-0.01	-8.91
Others	1.77	1.80	1.80	1.80	1.17	1.17	1.17	1.17	2.07	2.12	2.12	2.12	0.00	0.00	0.00	-0.09

Table 14 Sunflowerseed Area, Yield, and Production

Country / Region	Area (Million hectares)				Yield (Metric tons per hectare)				Production (Million metric tons)				Change in Production						
	2021/22	Prel.		2023/24 Proj.		2021/22	Prel.		2023/24 Proj.		2021/22	Prel.		2023/24 Proj.		From last month		From last year	
		2022/23	Jun	Jul	2022/23		Jun	Jul	2022/23	Jun		Jul	MMT	Percent	MMT	Percent			
World	28.64	28.24	28.21	28.50	1.99	1.88	1.91	1.92	56.95	53.03	54.01	54.69	0.68	1.26	1.67	3.14			
United States	0.50	0.65	0.53	0.52	1.71	1.96	1.98	1.98	0.86	1.28	1.04	1.03	-0.01	-0.87	-0.25	-19.28			
Total Foreign	28.13	27.59	27.69	27.98	1.99	1.88	1.91	1.92	56.09	51.75	52.97	53.66	0.69	1.30	1.91	3.69			
Former Soviet Union - 12																			
Russia	9.61	9.11	9.50	9.50	1.62	1.78	1.74	1.74	15.57	16.25	16.50	16.50	0.00	0.00	0.25	1.51			
Ukraine	7.10	5.70	5.70	6.00	2.46	2.14	2.07	2.07	17.50	12.20	11.80	12.40	0.60	5.08	0.20	1.64			
Kazakhstan	0.94	1.09	1.15	1.15	1.10	1.20	1.22	1.22	1.03	1.30	1.40	1.40	0.00	0.00	0.10	7.36			
European Union	4.37	5.18	5.20	5.20	2.35	1.79	2.21	2.21	10.29	9.29	11.50	11.50	0.00	0.00	2.21	23.83			
South America																			
Argentina	1.96	2.20	1.95	1.95	2.07	2.23	2.00	2.05	4.05	4.90	3.90	4.00	0.10	2.56	-0.90	-18.37			
Uruguay	0.07	0.07	0.07	0.07	1.62	1.64	1.62	1.62	0.11	0.12	0.11	0.11	0.00	0.00	-0.01	-8.70			
Bolivia	0.14	0.14	0.13	0.13	1.39	1.40	1.35	1.35	0.20	0.20	0.18	0.18	0.00	0.00	-0.02	-11.62			
Brazil	0.04	0.04	0.04	0.04	1.03	1.56	1.55	1.55	0.04	0.06	0.07	0.07	0.00	0.00	0.00	1.56			
Paraguay	0.03	0.03	0.03	0.03	1.55	1.56	1.50	1.50	0.05	0.05	0.05	0.05	0.00	0.00	-0.01	-10.00			
China	0.70	0.85	0.85	0.85	3.06	2.79	2.81	2.81	2.15	2.37	2.39	2.39	0.00	0.00	0.02	0.80			
South Asia																			
India	0.27	0.33	0.27	0.27	0.52	0.66	0.78	0.78	0.14	0.22	0.21	0.21	0.00	0.00	-0.01	-2.33			
Pakistan	0.10	0.11	0.10	0.10	1.38	1.35	1.35	1.35	0.14	0.15	0.14	0.14	0.00	0.00	-0.01	-8.78			
Middle East																			
Turkey	0.76	0.79	0.70	0.70	2.30	2.41	2.50	2.50	1.75	1.90	1.75	1.75	0.00	0.00	-0.15	-7.89			
Iran	0.04	0.04	0.04	0.04	1.00	1.02	1.05	1.05	0.04	0.04	0.04	0.04	0.00	0.00	0.00	-2.27			
Israel	0.00	0.00	0.00	0.00	2.00	5.00	4.00	4.00	0.00	0.01	0.00	0.00	0.00	0.00	0.00	-20.00			
Africa																			
Egypt	0.01	0.02	0.02	0.02	2.38	2.53	2.50	2.50	0.02	0.04	0.05	0.05	0.00	0.00	0.01	31.58			
Morocco	0.02	0.02	0.02	0.02	1.25	1.11	1.27	1.27	0.03	0.02	0.03	0.03	0.00	0.00	0.01	40.00			
South Africa	0.67	0.56	0.60	0.60	1.26	1.37	1.46	1.46	0.85	0.76	0.88	0.88	0.00	0.00	0.12	15.13			
Burma	0.60	0.60	0.60	0.60	0.65	0.65	0.65	0.65	0.39	0.39	0.39	0.39	0.00	0.00	0.00	0.00			
Canada	0.04	0.04	0.04	0.03	2.03	2.21	2.24	2.21	0.08	0.08	0.09	0.08	-0.01	-11.76	-0.01	-10.71			
Australia	0.02	0.03	0.02	0.02	1.58	1.48	1.24	1.24	0.03	0.04	0.03	0.03	0.00	0.00	-0.01	-29.73			
Others	0.63	0.66	0.66	0.66	2.59	2.07	2.28	2.28	1.64	1.37	1.50	1.50	0.00	0.00	0.13	9.52			

World and Selected Countries and Regions

Table 15 Rapeseed Area, Yield, and Production

Country / Region	Area (Million hectares)				Yield (Metric tons per hectare)				Production (Million metric tons)				Change in Production			
	Prel.		2023/24 Proj.		Prel.		2023/24 Proj.		Prel.		2023/24 Proj.		From last month		From last year	
	2021/22	2022/23	Jun	Jul	2021/22	2022/23	Jun	Jul	2021/22	2022/23	Jun	Jul	MMT	Percent	MMT	Percent
World	38.39	41.96	41.81	42.31	1.96	2.11	2.09	2.07	75.09	88.34	87.21	87.42	0.21	0.24	-0.91	-1.03
United States	0.85	0.88	0.89	0.91	1.46	1.98	2.06	2.02	1.24	1.74	1.83	1.85	0.01	0.65	0.10	5.91
Total Foreign	37.54	41.08	40.92	41.40	1.97	2.11	2.09	2.07	73.84	86.59	85.38	85.58	0.20	0.23	-1.02	-1.17
European Union	5.39	5.94	6.07	6.07	3.23	3.29	3.46	3.33	17.39	19.54	21.00	20.20	-0.80	-3.81	0.66	3.40
United Kingdom	0.31	0.36	0.41	0.41	3.20	3.74	3.50	3.40	0.98	1.36	1.44	1.40	-0.04	-2.79	0.03	2.50
Switzerland	0.02	0.02	0.02	0.02	3.14	3.14	3.14	3.14	0.07	0.07	0.07	0.07	0.00	0.00	0.00	0.00
Canada	8.95	8.60	8.80	8.80	1.54	2.21	2.31	2.31	13.75	19.00	20.30	20.30	0.00	0.00	1.30	6.84
China	6.99	7.27	7.35	7.35	2.10	2.14	2.10	2.10	14.71	15.53	15.40	15.40	0.00	0.00	-0.13	-0.84
South Asia																
India	7.99	9.00	9.20	9.20	1.39	1.28	1.27	1.27	11.10	11.50	11.70	11.70	0.00	0.00	0.20	1.74
Pakistan	0.33	0.39	0.39	0.39	1.49	1.00	1.38	1.38	0.49	0.39	0.54	0.54	0.00	0.00	0.15	38.46
Bangladesh	0.61	0.81	0.80	0.80	1.35	1.30	1.29	1.29	0.82	1.05	1.03	1.03	0.00	0.00	-0.02	-1.90
Former Soviet Union - 12																
Russia	1.62	2.27	2.10	2.10	1.71	1.76	1.76	1.76	2.78	4.00	3.70	3.70	0.00	0.00	-0.30	-7.50
Ukraine	1.04	1.23	1.15	1.50	2.91	2.85	2.78	2.67	3.02	3.50	3.20	4.00	0.80	25.00	0.50	14.29
Belarus	0.32	0.33	0.34	0.34	1.59	1.69	1.67	1.67	0.50	0.55	0.56	0.56	0.00	0.00	0.01	1.82
Kazakhstan	0.12	0.13	0.13	0.13	1.24	1.48	1.38	1.38	0.15	0.19	0.18	0.18	0.00	0.00	-0.01	-4.76
Australia	3.25	3.90	3.50	3.50	2.10	2.13	1.40	1.40	6.82	8.30	4.90	4.90	0.00	0.00	-3.40	-40.96
South America																
Chile	0.04	0.03	0.04	0.04	3.86	3.79	3.82	3.82	0.14	0.13	0.15	0.15	0.00	0.00	0.02	16.00
Paraguay	0.04	0.05	0.04	0.04	1.45	1.51	1.50	1.50	0.06	0.07	0.06	0.06	0.00	0.00	-0.01	-7.35
Ethiopia	0.03	0.03	0.03	0.03	1.80	1.80	1.80	1.80	0.05	0.05	0.05	0.05	0.00	0.00	0.00	0.00
Others	0.51	0.73	0.56	0.69	2.02	1.89	1.98	1.96	1.03	1.38	1.11	1.35	0.24	21.60	-0.03	-2.10

World and Selected Countries and Regions

Table 16 Copra, Palm Kernel, and Palm Oil Production

Country / Region	Production (Million metric tons)				Change in Production			
	2021/22	Prel.	2023/24 Proj.		From last month		From last year	
		2022/23	Jun	Jul	MMT	Percent	MMT	Percent
Oilseed, Copra								
Philippines	2.60	2.60	2.70	2.70	0.00	0.00	0.10	3.85
Indonesia	1.68	1.68	1.69	1.69	0.00	0.00	0.01	0.60
India	0.94	0.94	0.94	0.94	0.00	0.00	0.00	0.00
Vietnam	0.29	0.29	0.29	0.29	0.00	0.00	0.00	0.00
Papua New Guinea	0.11	0.11	0.11	0.11	0.00	0.00	0.00	0.00
Thailand	0.09	0.09	0.09	0.09	0.00	0.00	0.00	0.00
Sri Lanka	0.11	0.07	0.07	0.07	0.00	0.00	0.00	0.00
Mexico	0.05	0.05	0.05	0.05	0.00	0.00	0.00	0.00
Solomon Islands	0.03	0.03			0.00	0.00	-0.03	0.00
Cote d'Ivoire	0.03	0.03	0.03	0.03	0.00	0.00	0.00	0.00
World	6.07	6.03	6.05	6.05	0.00	0.00	0.02	0.33
Oilseed, Palm Kernel								
Indonesia	11.20	11.80	12.00	12.00	0.00	0.00	0.20	1.69
Malaysia	4.45	4.65	4.70	4.70	0.00	0.00	0.05	1.08
Nigeria	0.90	0.90	0.90	1.10	0.20	22.22	0.20	22.22
Thailand	0.83	0.86	0.86	0.86	0.00	0.00	0.00	0.00
Colombia	0.32	0.33	0.34	0.35	0.01	2.94	0.02	6.06
Guatemala	0.18	0.18	0.18	0.18	0.00	0.00	0.00	0.00
Papua New Guinea	0.17	0.17	0.18	0.18	0.00	0.00	0.01	5.88
Honduras	0.16	0.16	0.16	0.16	0.00	0.00	0.00	0.00
Brazil	0.15	0.15	0.16	0.16	0.00	0.00	0.01	6.67
Cameroon	0.15	0.15	0.15	0.15	0.00	0.00	0.00	0.00
World	19.14	20.03	20.30	20.51	0.21	1.03	0.48	2.40
Oil, Palm								
Indonesia	42.00	46.00	47.00	47.00	0.00	0.00	1.00	2.17
Malaysia	18.15	18.60	19.00	19.00	0.00	0.00	0.40	2.15
Thailand	3.38	3.42	3.45	3.45	0.00	0.00	0.03	0.88
Colombia	1.76	1.80	1.80	1.90	0.10	5.56	0.10	5.56
Nigeria	1.40	1.40	1.40	1.50	0.10	7.14	0.10	7.14
Guatemala	0.88	0.91	0.92	0.92	0.00	0.00	0.01	1.10
Papua New Guinea	0.72	0.78	0.80	0.80	0.00	0.00	0.02	2.56
Cote d'Ivoire	0.58	0.60	0.60	0.60	0.00	0.00	0.00	0.00
Honduras	0.60	0.60	0.60	0.60	0.00	0.00	0.00	0.00
Brazil	0.55	0.57	0.59	0.59	0.00	0.00	0.01	1.75
World	72.96	77.78	79.26	79.46	0.20	0.25	1.68	2.16

World and Selected Countries and Regions

Table 17 Cotton Area, Yield, and Production

Country / Region	Area (Million hectares)				Yield (Kilograms per hectare)				Production (Million 480 lb. bales)				Change in Production			
	Prel.		2023/24 Proj.		Prel.		2023/24 Proj.		Prel.		2023/24 Proj.		From last month		From last year	
	2021/22	2022/23	Jun	Jul	2021/22	2022/23	Jun	Jul	2021/22	2022/23	Jun	Jul	MBales	Percent	MBales	Percent
World	32.49	31.75	31.91	32.36	775	809	797	786	115.66	117.97	116.72	116.84	0.12	0.10	-1.12	-0.95
United States	4.16	2.96	3.81	3.86	918	1,065	943	931	17.52	14.47	16.50	16.50	0.00	0.00	2.03	14.04
Total Foreign	28.33	28.79	28.10	28.50	754	783	777	767	98.13	103.50	100.22	100.34	0.12	0.12	-3.16	-3.05
South Asia																
India	12.37	13.00	12.40	12.40	429	435	448	448	24.40	26.00	25.50	25.50	0.00	0.00	-0.50	-1.92
Pakistan	2.00	1.80	2.00	2.50	653	472	642	566	6.00	3.90	5.90	6.50	0.60	10.17	2.60	66.67
China	3.10	3.15	2.90	2.90	1,882	2,122	2,027	2,027	26.80	30.70	27.00	27.00	0.00	0.00	-3.70	-12.05
South America																
Brazil	1.60	1.64	1.63	1.63	1,595	1,819	1,770	1,770	11.72	13.70	13.25	13.25	0.00	0.00	-0.45	-3.28
Argentina	0.48	0.40	0.41	0.41	624	544	690	611	1.38	1.00	1.30	1.15	-0.15	-11.54	0.15	15.00
Paraguay	0.02	0.04	0.03	0.03	527	877	806	806	0.05	0.14	0.10	0.10	0.00	0.00	-0.04	-29.08
Africa																
Burkina Faso	0.60	0.62	0.61	0.61	351	273	330	330	0.96	0.78	0.93	0.93	0.00	0.00	0.15	19.35
Mali	0.72	0.60	0.70	0.70	432	269	389	389	1.43	0.74	1.25	1.25	0.00	0.00	0.52	70.07
Cote d'Ivoire	0.47	0.41	0.39	0.39	486	236	424	424	1.05	0.45	0.76	0.76	0.00	0.00	0.32	70.79
Benin	0.64	0.57	0.64	0.64	483	418	476	476	1.42	1.10	1.40	1.40	0.00	0.00	0.30	27.27
Egypt	0.09	0.14	0.15	0.15	717	661	660	660	0.28	0.43	0.46	0.46	0.00	0.00	0.03	7.06
Cameroon	0.23	0.23	0.23	0.23	606	563	568	568	0.64	0.60	0.60	0.60	0.00	0.00	0.00	0.00
Tanzania	0.24	0.35	0.35	0.35	231	218	218	218	0.26	0.35	0.35	0.35	0.00	0.00	0.00	0.00
Nigeria	0.27	0.27	0.27	0.27	282	282	282	282	0.35	0.35	0.35	0.35	0.00	0.00	0.00	0.00
Zimbabwe	0.25	0.24	0.24	0.24	191	195	195	195	0.22	0.22	0.22	0.22	0.00	0.00	0.00	0.00
Ethiopia	0.08	0.08	0.08	0.08	637	637	637	637	0.24	0.24	0.24	0.24	0.00	0.00	0.00	0.00
Former Soviet Union - 12																
Uzbekistan	1.06	1.07	1.03	1.03	596	692	655	655	2.90	3.40	3.10	3.10	0.00	0.00	-0.30	-8.82
Turkmenistan	0.55	0.55	0.55	0.55	356	356	356	356	0.90	0.90	0.90	0.90	0.00	0.00	0.00	0.00
Tajikistan	0.17	0.17	0.17	0.17	608	615	640	640	0.48	0.48	0.50	0.50	0.00	0.00	0.02	4.17
Kazakhstan	0.11	0.13	0.12	0.12	467	584	526	526	0.24	0.34	0.29	0.29	0.00	0.00	-0.05	-13.43
Middle East																
Turkey	0.45	0.56	0.43	0.43	1,839	1,922	1,793	1,793	3.80	4.90	3.50	3.50	0.00	0.00	-1.40	-28.57
Syria	0.03	0.03	0.03	0.03	1,132	1,132	1,132	1,132	0.13	0.13	0.13	0.13	0.00	0.00	0.00	0.00
Iran	0.10	0.10	0.10	0.10	871	871	762	762	0.40	0.40	0.35	0.35	0.00	0.00	-0.05	-12.50
Australia	0.64	0.65	0.65	0.52	2,006	1,943	1,943	2,283	5.85	5.80	5.80	5.40	-0.40	-6.90	-0.40	-6.90
Mexico	0.15	0.20	0.17	0.17	1,725	1,720	1,633	1,633	1.22	1.58	1.28	1.28	0.00	0.00	-0.31	-19.30
Burma	0.16	0.15	0.16	0.16	660	653	660	660	0.48	0.45	0.47	0.47	0.00	0.00	0.02	4.44
Others	1.77	1.66	1.67	1.71	560	583	561	558	4.56	4.45	4.31	4.38	0.07	1.62	-0.07	-1.46

World and Selected Countries and Regions

TABLE 18

The table below presents a record of the July projection and the final Estimate. Using world wheat production as an example, the "root mean square error" means that chances are 2 out of 3 that the current forecast will not be above or below the final estimate by more than 2.7 percent. Chances are 9 out of 10 (90% confidence level) that the difference will not exceed 4.6 percent. The average difference between the July projection and the final estimate is 14 million tons, ranging from 1 million to 34.6 million tons. The July projection has been below the estimate 25 times and above 17 times.

RELIABILITY OF PRODUCTION PROJECTIONS 1/

COMMODITY AND REGION	Root mean square error	90 percent confidence interval	Difference between forecast and final estimate				
			Average	Smallest	Largest	Years	
						Below final	Above final
	Percent		---Million metric tons---				
WHEAT							
World	2.7	4.6	14.0	1.0	34.6	25	17
U.S.	3.7	6.2	1.6	0.0	6.2	19	23
Foreign	3.0	5.0	13.8	0.3	34.7	26	16
COARSE GRAINS 2/							
World	2.8	4.7	22.8	1.3	68.4	22	20
U.S.	9.7	16.4	15.4	0.0	57.9	19	23
Foreign	2.5	4.2	14.3	1.1	53.0	22	20
RICE (Milled)							
World	2.3	3.9	6.7	0.4	24.0	26	16
U.S.	5.5	9.2	0.3	0.0	0.8	20	20
Foreign	2.3	3.9	6.7	0.5	24.3	26	16
SOYBEANS							
World	5.2	8.7	8.4	0.5	33.2	19	23
U.S.	6.9	11.6	3.7	0.0	11.7	22	20
Foreign	7.6	12.7	7.4	1.0	34.1	21	21
COTTON			---Million 480-lb. bales---				
World	5.5	9.3	3.8	0.0	14.9	23	19
U.S.	10.0	16.8	1.4	0.1	5.3	21	21
Foreign	5.6	9.5	3.0	0.0	12.1	21	20
UNITED STATES			-----Million bushels-----				
<i>CORN</i>	10.6	17.9	558	12	2,190	22	20
<i>SORGHUM</i>	23.1	38.9	69	3	213	24	18
<i>BARLEY</i>	7.5	12.6	19	0	87	14	27
<i>OATS</i>	12.4	20.9	18	0	144	7	33

1/ Marketing years 1981/82 through 2022/23 for grains, soybeans, and cotton. Final for grains, soybeans, and cotton is defined as the first November estimate following the marketing year for 1981/82 through 2021/22, and for 2022/23 the last month's estimate.

2/ Includes corn, sorghum, barley, oats, rye, millet, and mixed grain

July 2023

Global Market Analysis, FAS, USDA