



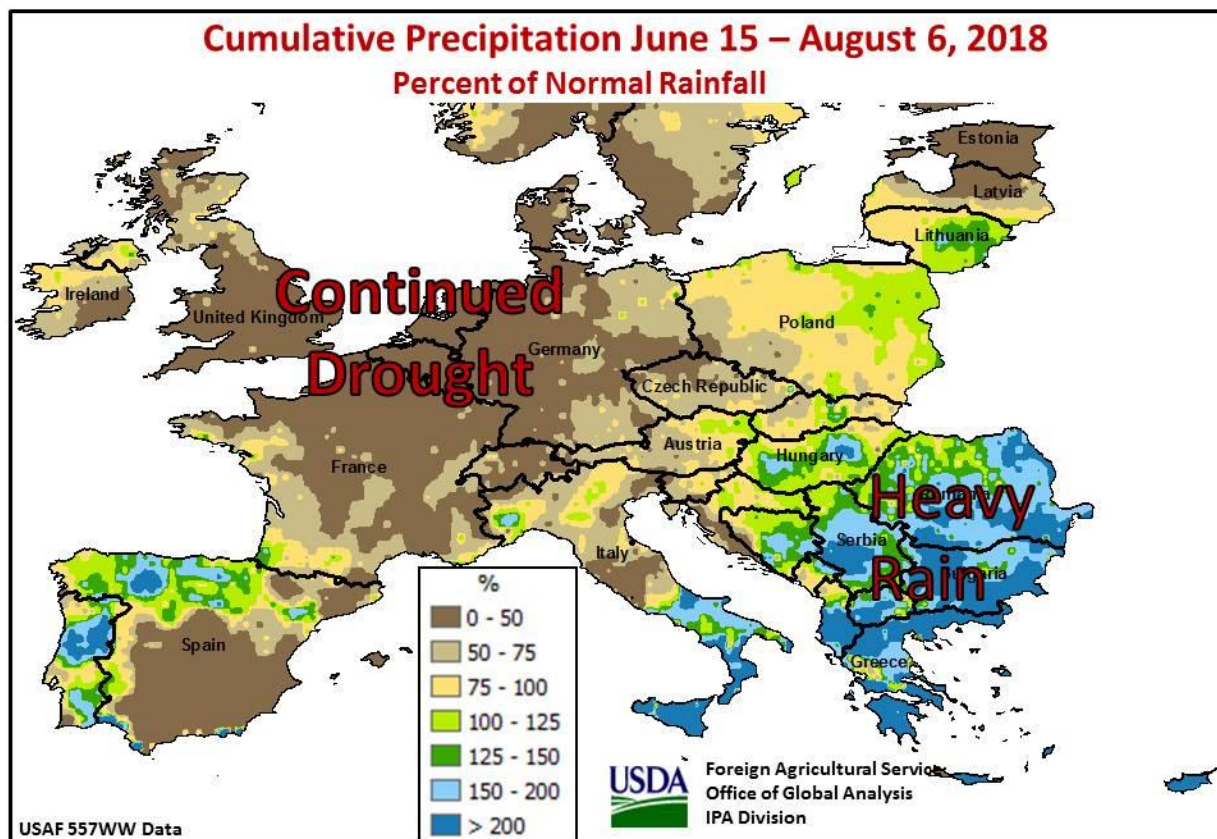
United States
Department of
Agriculture

Foreign
Agricultural
Service

Circular Series
WAP 8-18
August 2018

World Agricultural Production

European Union Wheat: Drought Cuts Estimated Production by 7.5 Million Tons

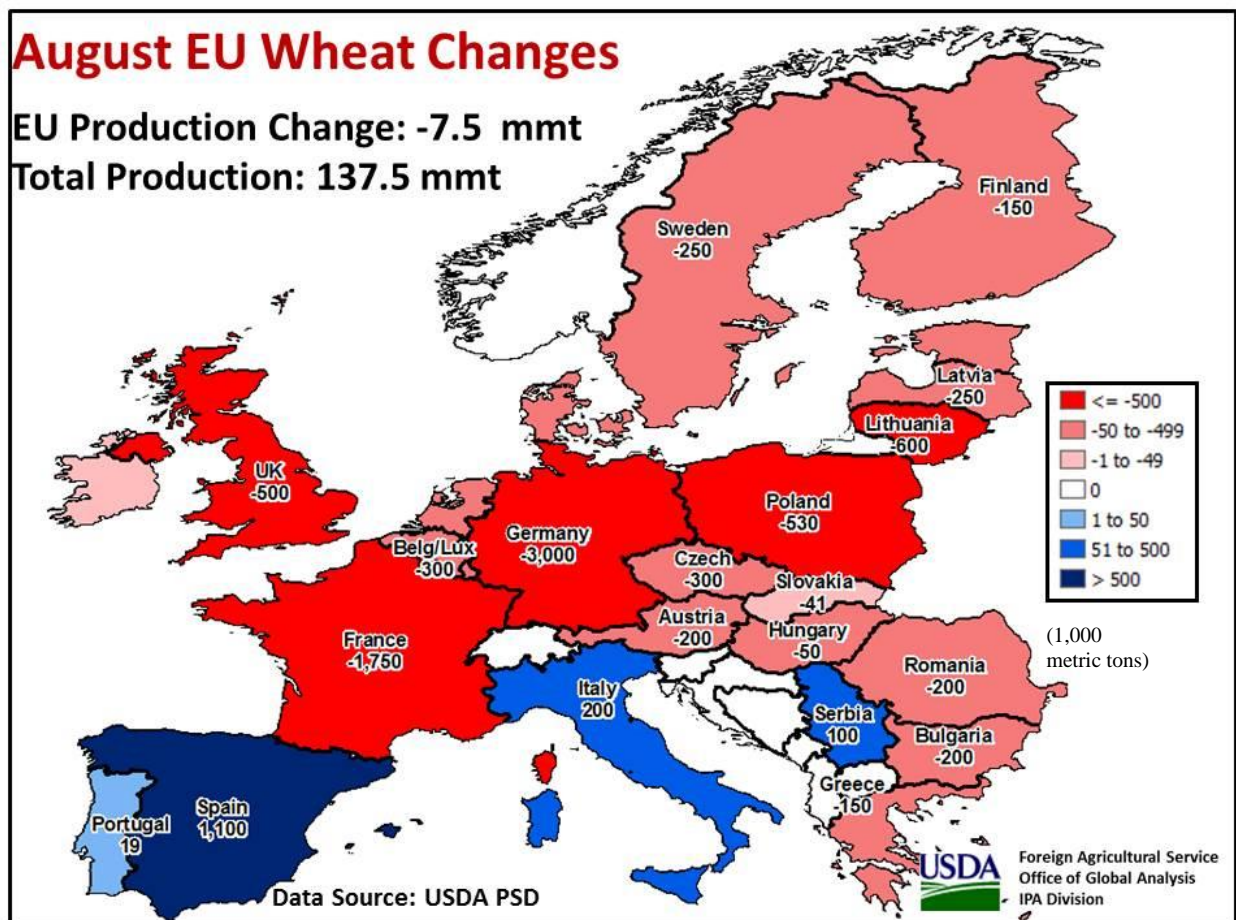


European Union wheat production for 2018/19 is estimated at 137.5 million metric tons (mmt), down 7.5 mmt or 5 percent from last month, down 14.2 mmt or 9 percent from last year, and down 9 percent from the 5-year average. Area is estimated at 25.6 million hectares (mha), nearly unchanged from last month, but down 0.7 mha from last year. Yield is estimated at 5.36 tons per hectare, down 5 percent from last month, down 7 percent from last year, and down 6 percent from the 5-year average.

Drought and higher-than-normal temperatures continued in July throughout most of northern Europe. This unfavorable combination has been ongoing since June, further depleting scant soil moisture, accelerating crop development and lowering yields. Normalized Difference Vegetation Index (NDVI) depicts a stark reduction in biomass across the northern European wheat belt.

Approved by the World Agricultural Outlook Board

Specifically, wheat production is estimated down 3.0 million tons in Germany due to very poor conditions in the north. Estimated wheat production in France is down 1.75 million tons based on harvest reports. Meanwhile in Spain, estimated production increased 1.1 million tons due to beneficial rainfall. Estimated production in Romania and Bulgaria were lowered due to excessive rain. (For more information, please contact Bryan.Purcell@fas.usda.gov.)

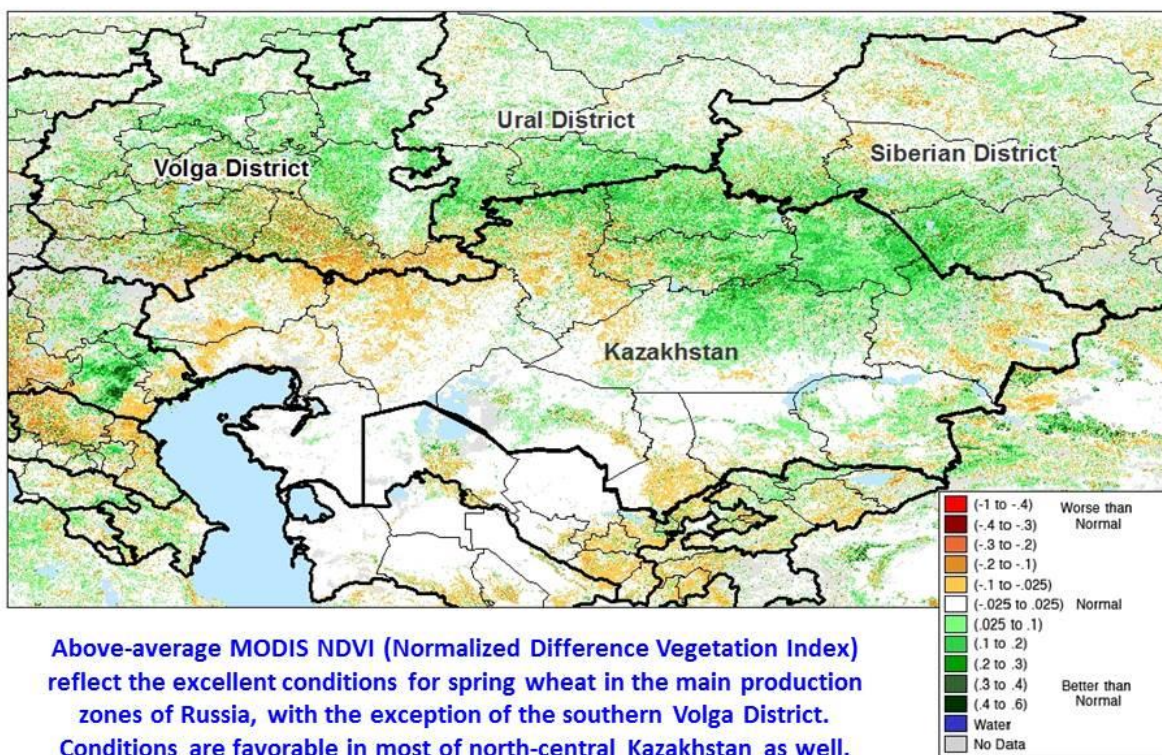


For country-specific area, yield, and production estimates within the European Union (EU), please go to PSD Online at <https://apps.fas.usda.gov/PSDOnline/app/index.html#/app/home>, and select “Downloadable Data Sets.” Select the zipped file for “EU Countries Area & Production.”

Russia Wheat: Drought Recovery Causes Yield Rebound

USDA estimates Russia's 2018/19 wheat production at 68.0 million metric tons (mmt), up 1.0 mmt from last month but down 17.0 mmt from last year's record crop. The estimate includes

Russia and Kazakhstan Spring Wheat Zone MODIS NDVI Anomaly: July 20-27, 2018



Source: USDA/NASA Global Agriculture Monitoring project (GLAM)

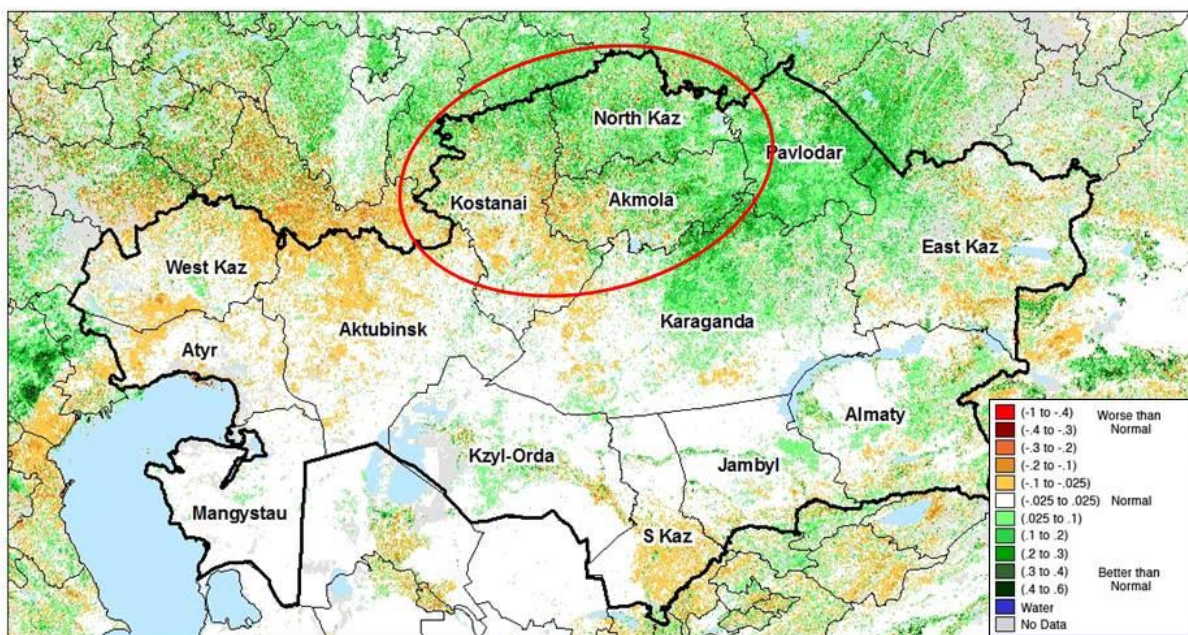
Foreign Agricultural Service
Office of Global Analysis
IPA Division

48.5 mmt of winter wheat and 19.5 mmt of spring wheat, and excludes estimated output from Crimea. Harvested area is estimated at 25.5 million hectares (14.0 mha winter and 11.5 mha spring), unchanged from last month and down 1.8 mha from last year. Total wheat yield is estimated at 2.67 metric tons per hectare, up 1 percent from last month and down 14 percent from last year's record. The month-to-month increase in yield is driven by the improvement in crop conditions as seen in the Normalized Difference Vegetation Index (NDVI), which highlights improved conditions in eastern growing regions (Siberia and Urals). Winter wheat harvest is underway and is ahead of last year's pace at about 70 percent complete. Russia's spring wheat harvest usually begins in late August and continues through October. (For more information, please contact Mark.Lindeman@fas.usda.gov.)

Area, yield, and production estimates for Russia winter wheat and spring wheat are available on [PSD Online](#). Select "Downloadable Data Sets" and open the zipped file for "Russia Wheat; Winter/Spring Area & Prod."


Kazakhstan Wheat: Favorable Conditions Boost the Production Forecast

Kazakhstan: MODIS NDVI Departure from Normal July 20-27, 2018



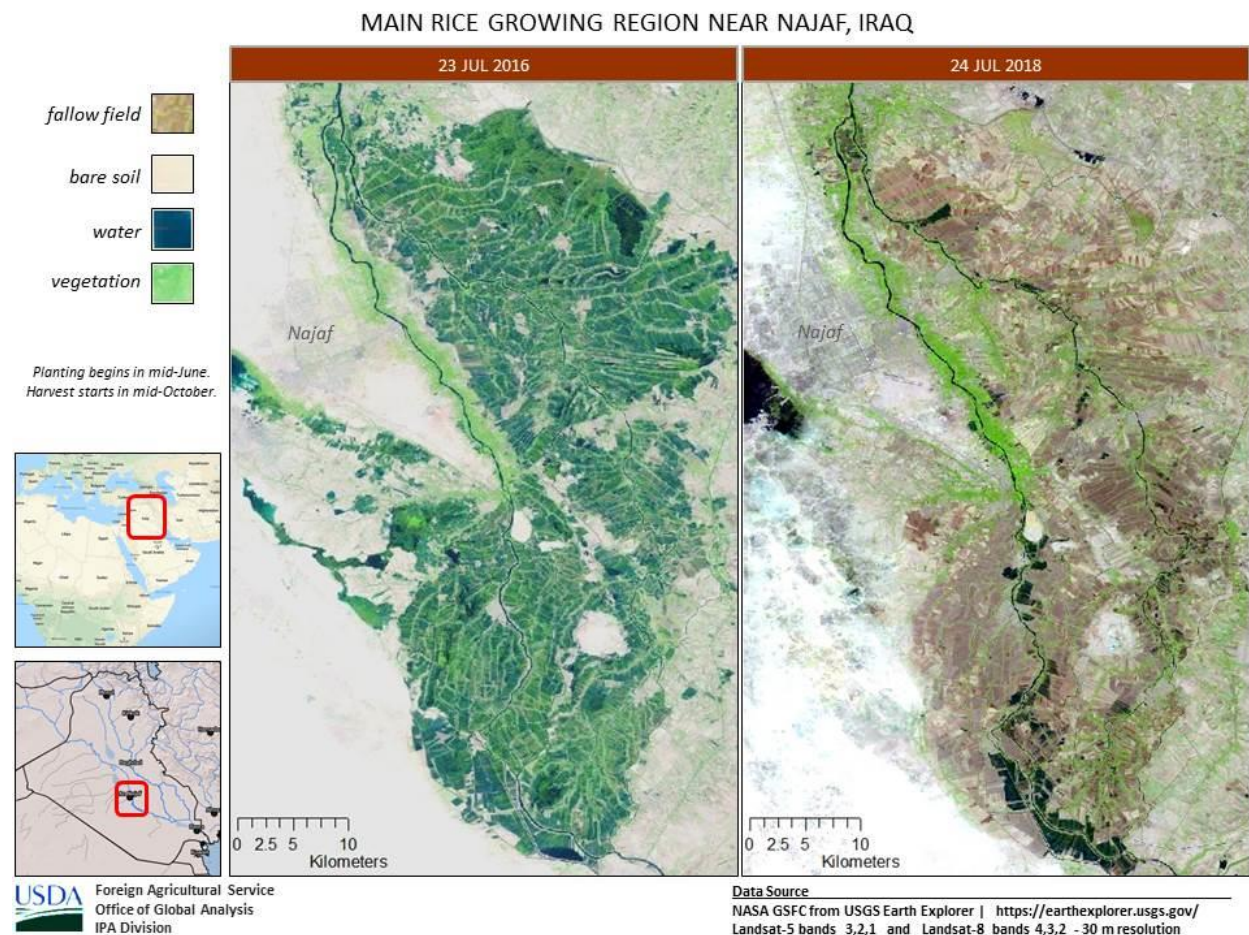
Kostanai, North Kazakhstan, and Akmola territories (circled) account for over 70 percent of the country's total wheat production. Crop conditions were above average except for in Kostanai, which was affected by the same dryness that prevailed in parts of the southern Volga District of Russia. NDVI analysis indicates high but not record yields for spring wheat in north-central Kazakhstan.

Source: NASA-GSFC-GIMMS/USDA-FAS-IPAD

Foreign Agricultural Service
Office of Global Analysis
IPA Division 

Kazakhstan wheat production for 2018/19 is estimated at 14.5 million metric tons (mmt), up 0.5 mmt from last month but down 0.3 mmt from last year. The month-to-month increase is based on continued favorable conditions for spring crops in most areas of north-central Kazakhstan, which is the main production zone for wheat. Yield is forecast at 1.26 metric tons per hectare, up 4 percent from last month, up 1 percent from last year, and 9 percent above the 5-year average. Spring wheat accounts for about 95 percent of the country's wheat output, and 85 percent of the spring wheat is grown in three territories in north-central Kazakhstan: Akmola, Kostanai, and North Kazakhstan. The harvest of spring wheat will begin in September. (*For more information, please contact Mark.Lindeman@fas.usda.gov.*)

Iraq Rice: Euphrates River Low Flow Mandates Restricted Rice Planting

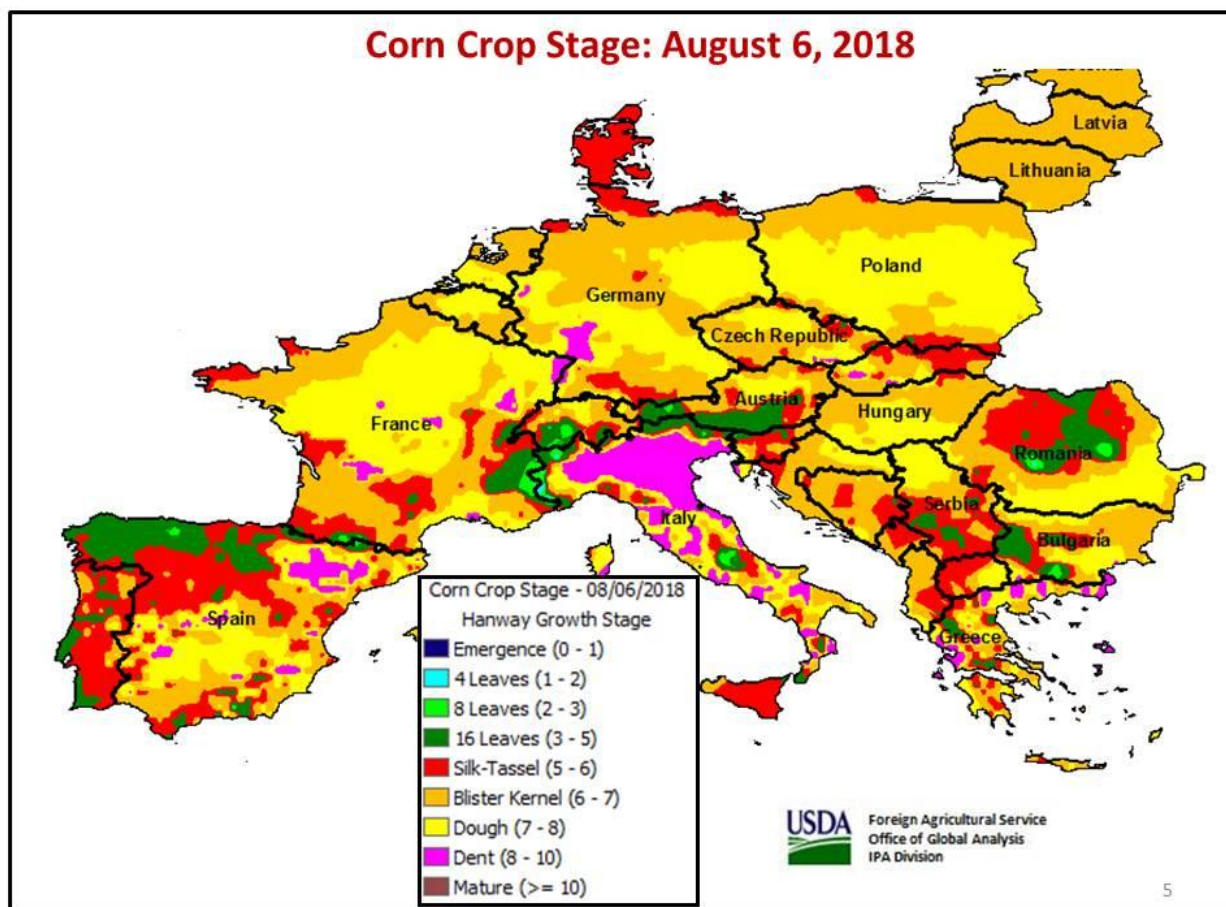


Rough rice production for 2018/19 is forecast at 65,000 metric tons (mt), down 115,000 mt from last month, and down 250,000 mt from last year. Harvested area is forecast at 20,000 hectares (ha), down 35,000 ha from last month and down 65,000 ha from last year. Yield is forecast at 3.25 tons per hectare, down slightly from last month and down 12 percent from last year.

The Euphrates River begins in Turkey, and receives approximately 94 percent of its water from snow melt in the eastern Turkish highlands. Satellite-modeled snow depth over this area indicated below- average snow depths suggesting that the low flow condition downstream in Iraq is mainly due to a diminished snow melt water supply. In early June, it was reported that the Government of Iraq had mandated severe planting restrictions of summer crops due to low flow conditions in the Euphrates and Tigris Rivers. Rice production restrictions were later modified upward, but this was likely too late to influence planting decisions. Landsat imagery acquired over the main rice growing region near Najaf indicates the lowest planted area in the last 10 years, and significantly less area than in 2016/17. (For more information, please contact William.Baker@fas.usda.gov)

EU Corn: Dryness in Northern Europe Cuts Production Despite Excellent Prospects in the Balkans

European Union corn production for 2018/19 is forecast at 59.8 million metric tons (mmt), down 1.7 mmt or 3 percent from last month, down 2.5 mmt or 4 percent from last year, and down 8 percent from the 5-year average. Area is estimated at 8.3 million hectares (mha), down 0.1 mmt from last month and last year, but down 9 percent from the 5-year average. Yield is forecast at 7.22 tons per hectare, down 2 percent from last month, down 3 percent from last year, but up 1 percent from the 5-year average. Corn yields are slightly higher than average due to the increased importance of production in the Balkans.



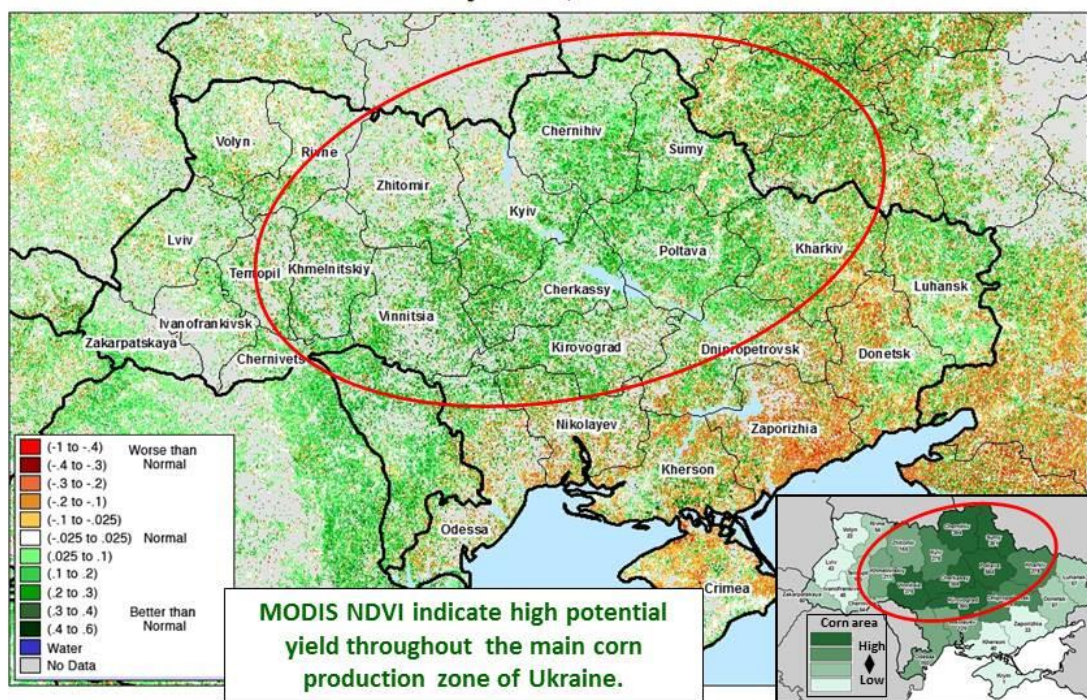
Damaging drought and higher-than-normal temperatures continued in July throughout most of northern Europe while favorable rains benefited corn yields in the Balkan countries. The unfavorably dry weather in northern Europe occurred during the sensitive corn stages of pollination and grainfill, leading to much lower regional yields. Forecast production was reduced most significantly in France (-2.0 mmt) and Germany (-1.2 mmt) where ears were not filling properly. Corn area that was initially planted for grain is instead being cut for silage as dry fields have reduced fodder supplies. In addition, water restrictions are being enforced in France, reducing or preventing irrigation. Meanwhile, beneficial rainfall has greatly boosted the

Balkan corn crop by 1.0 mmt in Romania, 0.4 mmt in Bulgaria, and 0.6 mmt in non-EU member Serbia. These increases, however, are not nearly enough to offset the losses in France and Germany. (For more information, please contact Bryan.Purcell@fas.usda.gov.)

For country-specific area, yield, and production estimates within the European Union (EU), please go to PSD Online at <https://apps.fas.usda.gov/PSDOnline/app/index.html#/app/home>, and select “Downloadable Data Sets.” Select the zipped file for “EU Countries Area & Production.”

Ukraine Corn: Record Yield Forecast

**Ukraine: MODIS NDVI Anomaly Departure from Average
July 20-27, 2018**

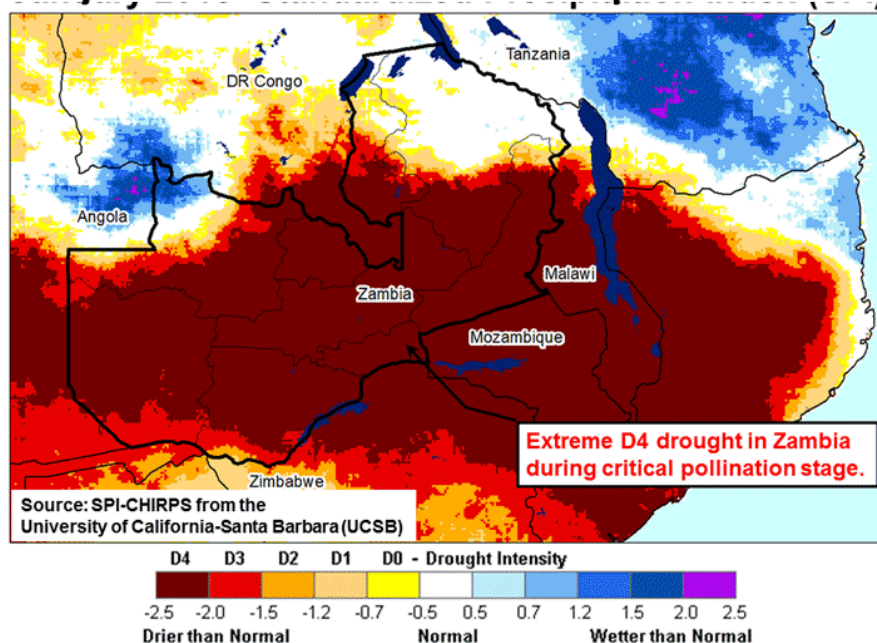


Source: USDA/NASA Global Agriculture Monitoring Project (GLAM)

USDA forecasts Ukraine corn production for 2018/19 at a record 31.0 million metric tons (mmt), up 1.0 mmt from last month, up 6.9 mmt from last year, and 0.1 mmt above the previous record crop which was harvested in 2013. Yield is forecast at 6.89 metric tons per hectare, 6 percent above last month, 27 percent above last year, and surpassing the 2016/17 record by 5 percent. The estimated harvest area was reduced slightly to 4.5 million hectares, based on final sown area data released by the State Statistical Service of Ukraine. This year’s crop has benefited from outstanding weather in central Ukraine, the main corn production region. Harvest will begin in September. (For more information, please contact Mark.Lindeman@fas.usda.gov.)

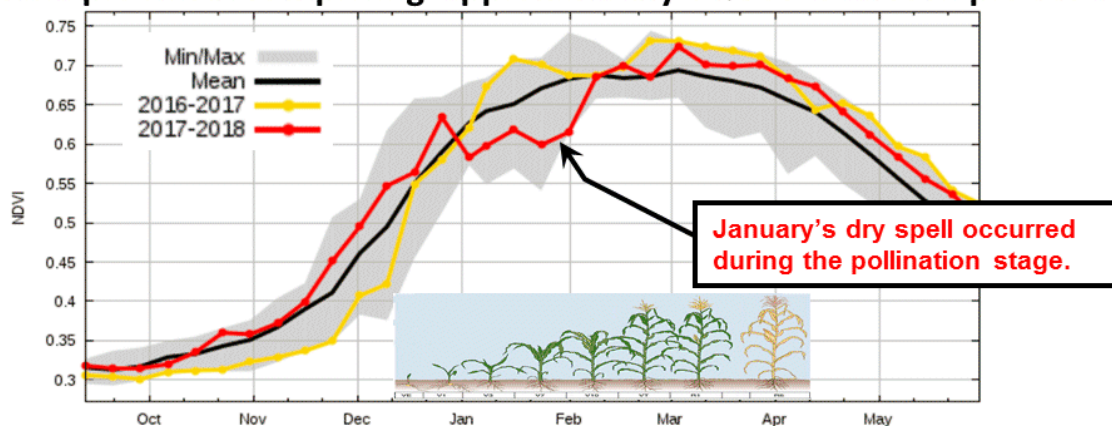
Zambia Corn: Drought Reduces Estimated Output by 34 Percent from Last Year

January 2018- Standardized Precipitation Index (SPI)

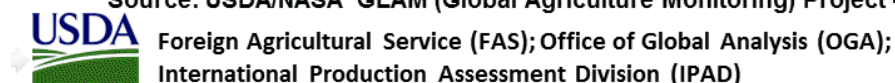


NDVI-MODIS Measurements from Oct. 2017 - May 2018

(Zambia provinces comprising approximately 94% of total corn production)



Source: USDA/NASA GLAM (Global Agriculture Monitoring) Project -<http://glam1.gsfc.nasa.gov/>



Zambia's 2018/19 corn production is estimated at 2.39 million metric tons (mmt), down 1.3 mmt or 34 percent from last year's record crop, and down 20 percent from the 5-year average. Area is estimated at 1.39 million hectares (mha), down 3 percent from last year, but up 23 percent from the 5-year average. Yield is estimated at 1.72 metric tons per hectare (t/ha), down 32 percent from last year's yield and down 36 percent from the 5-year average yield. Zambia

corn is planted from mid-October through mid-December and harvested from late April through August.

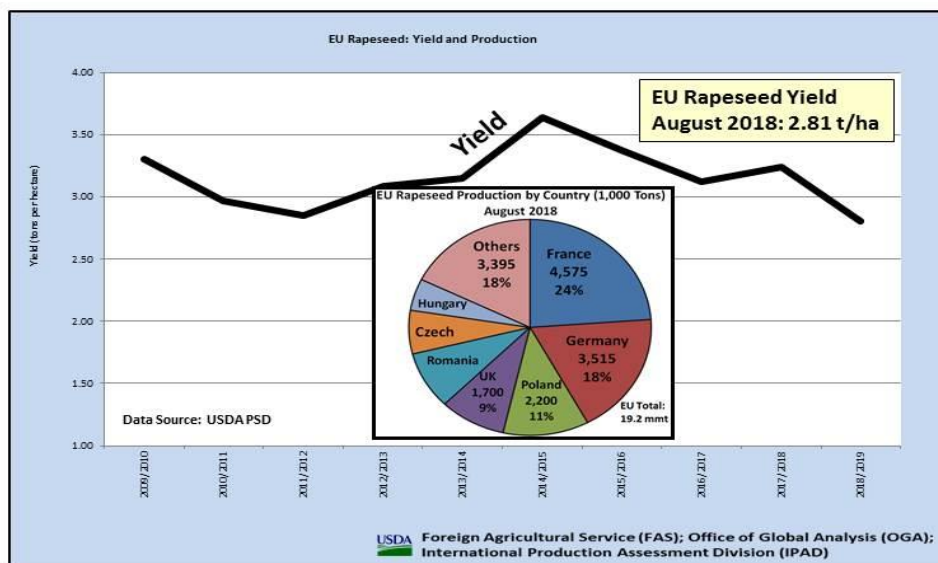
Drought prevailed in Zambia’s corn production areas during six weeks of drought from December 2017 through January 2018, with most of the country experiencing an extreme drought during January 2018. The extent of January’s drought also occurred during the critical pollination stage which adversely affected yields and significantly reduced Zambia’s total corn production for the 2018 harvest.

The December through January dry spell reduced the Normalized Difference Vegetation Index (NDVI) to minimum levels by the end of January, but favorable rains improved NDVI levels later in the season. Although rains were favorable during the second half of the season, the crop was severely damaged by January’s drought and the final yield of 1.72 t/ha was the lowest yield since the 2003/04 marketing year.

(For more information, contact Curt.Reynolds@fas.usda.gov.)

European Union Rapeseed: Estimated Production Down for Third Consecutive Month

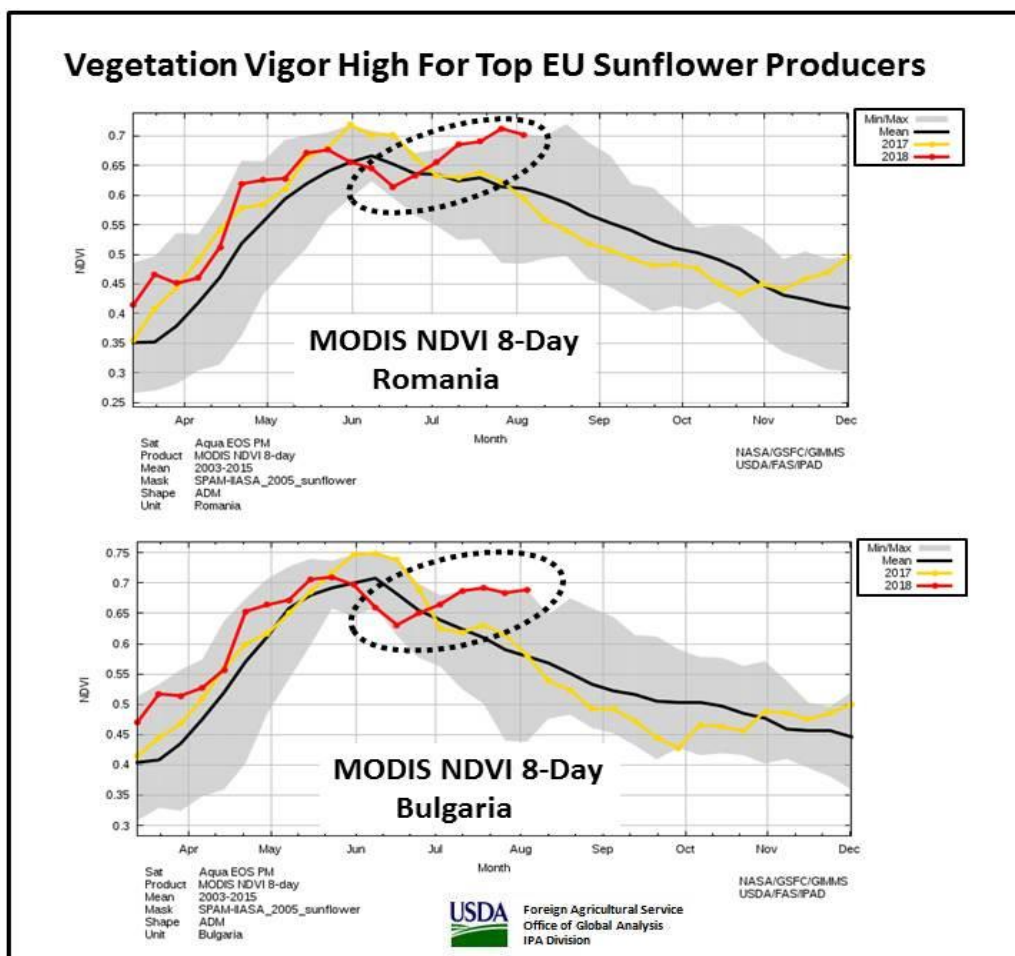
European Union (EU) rapeseed production for 2018/19 is estimated at 19.2 million metric tons (mmt), down 1.0 mmt or 5 percent from last month and down 13 percent from last year. Area is estimated at 6.8 million hectares (mha), up almost 0.1 mha from last month and similar to last year. Yield is estimated at 2.81 tons per hectare, down 6 percent from last month, down 13 percent from last year and down 15 percent from the 5-year average.



Rapeseed is concentrated in France, Germany, United Kingdom, Poland and the Baltic Sea countries. Since mid-June, the predominant weather in northern and central Europe has consisted of high temperatures and dryness. This unfavorable combination has further depleted scant soil moisture, accelerated crop development and lowered yields. The Normalized Difference Vegetation Index (NDVI), taken over these areas of intense rapeseed cultivation, confirms poor conditions. In addition, a combination of factors has also reduced the harvest in Romania, the leading producer in the Balkans. Romania rapeseed production is estimated down 0.4 million tons due to a combination of problems, which include spring dryness and heat, and excessive summer rainfall. The rapeseed harvest in the EU occurs in July and August. *(For more information, please contact Bryan.Purcell@fas.usda.gov.)*

For country-specific area, yield, and production estimates within the European Union (EU), please go to PSD Online at <https://apps.fas.usda.gov/PSDOnline/app/index.html#/app/home>, and select “Downloadable Data Sets.” Select the zipped file for “EU Countries Area & Production.”

EU Sunseed: Production Forecast Up on Favorable Rainfall in the Balkans



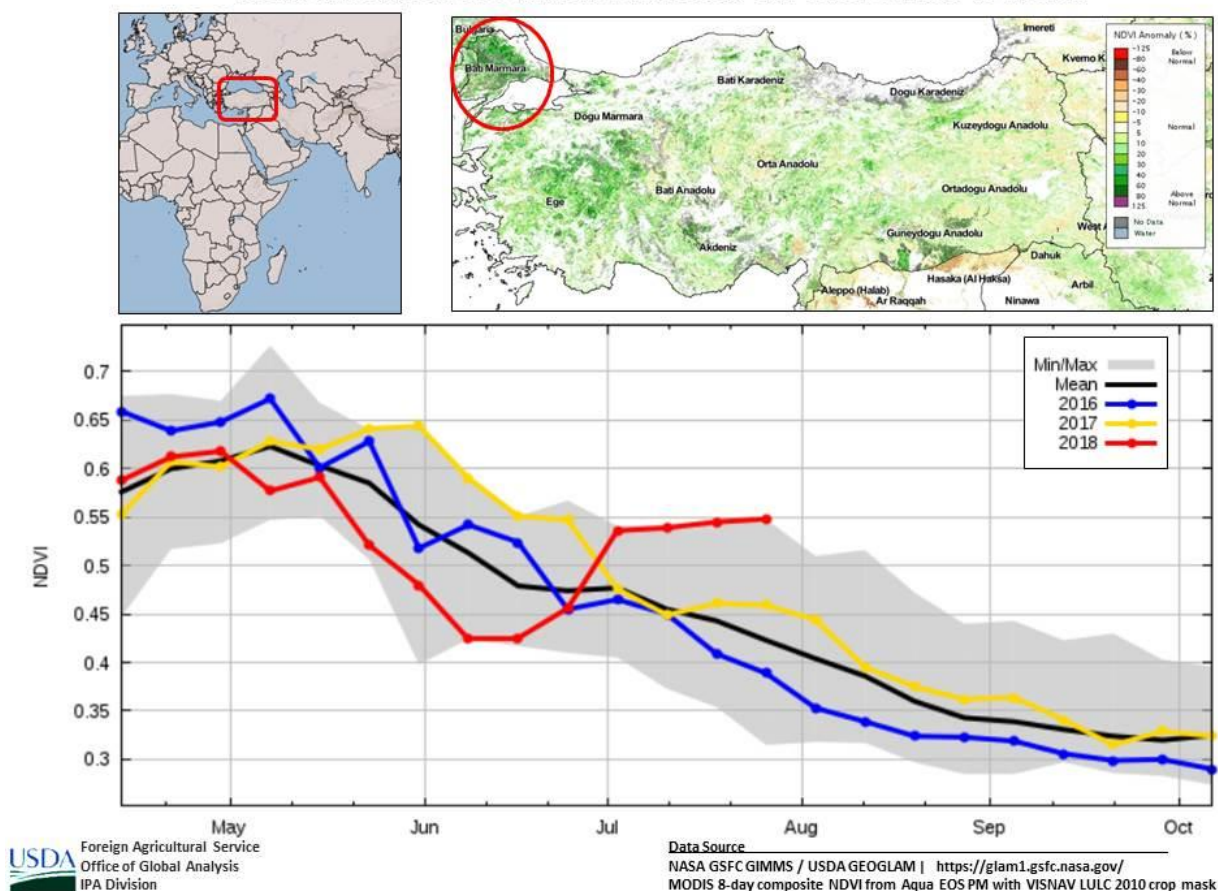
European Union (EU) sunseed production for 2018/19 is forecast at 9.7 million metric tons (mmt), up 0.6 mmt or 7 percent from last month and nearly unchanged from last year. Area is estimated at 4.3 million hectares (mha), up almost 0.1 mha from last month and similar to last year. Yield is estimated at 2.24 tons per hectare, up 5 percent from last month, similar to last year, and 9 percent above the 5-year average.

Sunseed production is concentrated in southeastern and southcentral Europe, particularly in Romania and Bulgaria where production is estimated up 0.3 mmt and 0.1 mmt, respectively. Additionally, production estimates for Hungary and non-EU member Serbia are up about 0.1 mmt each. Spain has also been unusually and favorably wet this season with forecast production up by 0.2 mmt. Due to dryness, the French crop is forecast down about 0.1 mmt. *(For more information, please contact Bryan.Purcell@fas.usda.gov.)*

For country-specific area, yield, and production estimates within the European Union (EU), please go to PSD Online at <https://apps.fas.usda.gov/PSDOnline/app/index.html#/app/home>, and select “Downloadable Data Sets.” Select the zipped file for “EU Countries Area & Production.”

Turkey Sunseed: Exceptional Weather Conditions Boost Crop Forecast to Record Yield

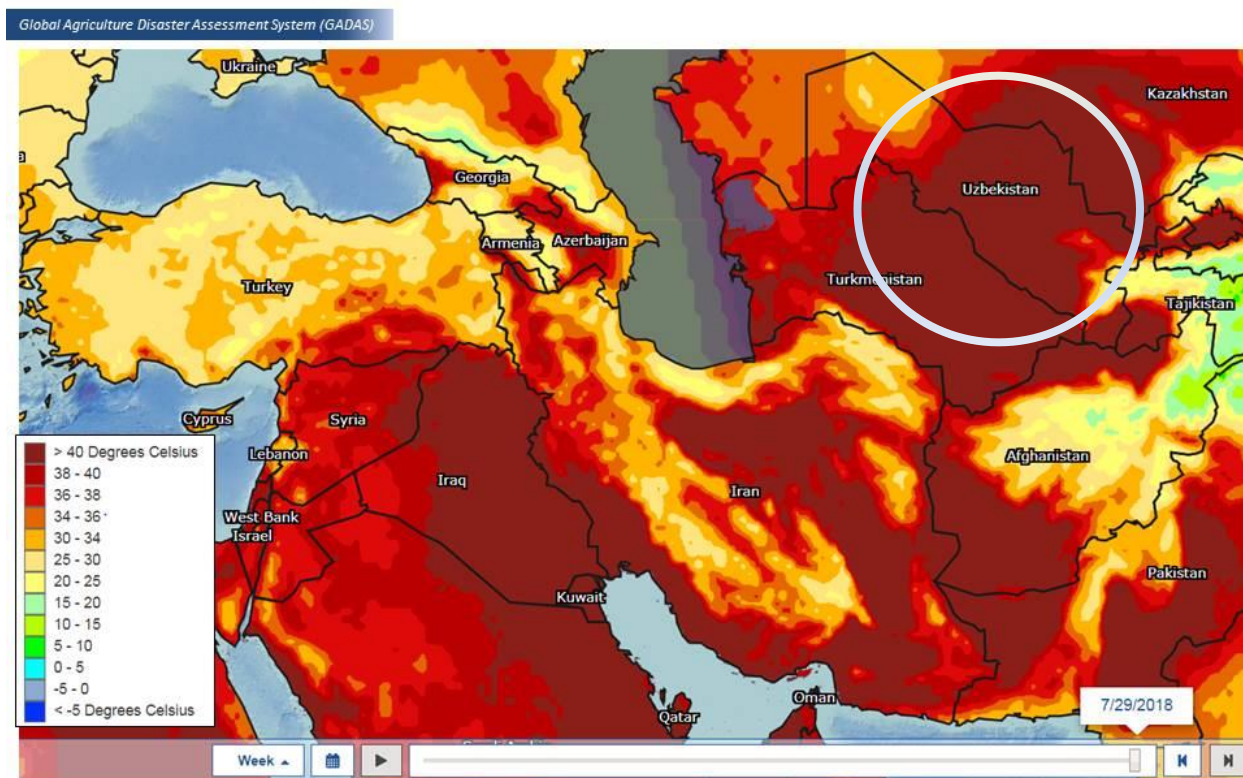
VEGETATION INDEX FOR MAJOR SUNFLOWER GROWING REGION IN TURKEY



Turkey sunseed production for 2018/19 is forecast at 1.7 million metric tons (mmt), up 0.2 mmt from last month and up 0.2 mmt from last year's crop. Harvested area is forecast at 725,000 hectares (ha), against 700,000 ha last year. The month-to-month production change is based on an increase in forecast sunseed yield because of abundant and timely precipitation complemented by moderate temperatures across the sunseed growing region. Total sunseed yield is forecast at a record 2.40 tons per hectare, up 10 percent from last month and up 8 percent from last year. Satellite data indicates above-average sunseed plant biomass as measured by vegetation indices, providing additional confirmation that the growing conditions have been very favorable. Sunseed harvest usually begins in late August and continues through October. Area, yield, and production estimates for Turkey sunseed are available on PSD Online. (For more information, please contact William.Baker@fas.usda.gov)

Uzbekistan Cotton: Hot, Dry Weather Reduces Forecast Cotton Yield

EXTREME MAXIMUM TEMPERATURES OVER CENTRAL ASIA



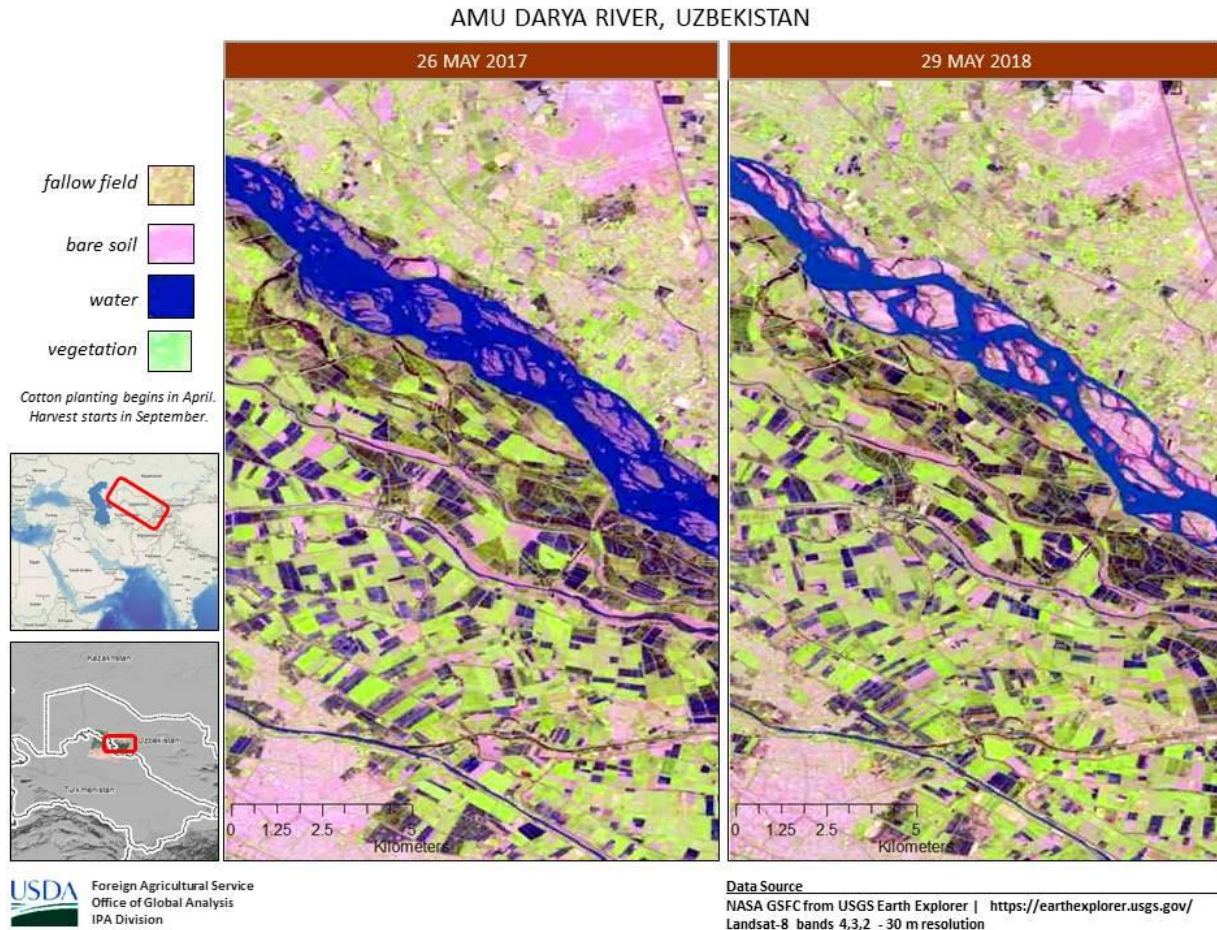
USDA Foreign Agricultural Service
Office of Global Analysis
IPA Division

Data Source
USAF 557th Weather Wing – LIS grid cell | <http://www.557weatherwing.af.mil/>

Uzbekistan cotton production for 2018/19 is forecast at 3.30 million 480-lb bales, down 0.5 million bales from last month, and down 0.7 million bales from last year. Harvested area is forecast at 1.2 million hectares, unchanged from last month and down 4 percent from last year. Yield is forecast at 599 kilograms per hectare down 12 percent from last month and down 13 percent from last year, and down 11 percent from the 5-year average. Extremely hot and dry

weather from mid-July until early August has been detrimental to the crop. Temperatures as high as 41 degrees Celsius occurred at peak flowering, breaking records across Uzbekistan and negatively impacting yield.

In addition, early-season satellite observations indicated low water levels in the Amu Darya River and support local reports of diminished irrigation water supplies.



Satellite modeled data of snow depth over the Pamir Mountains, which is the main source of water for the Amu Darya River, indicates below average accumulations this year. *(For more information, please contact William.Baker@fas.usda.gov)*



**World Agricultural Production
U.S. Department of Agriculture**

Foreign Agricultural Service / Office of Global Analysis
International Production Assessment Division (IPAD)
Ag Box 1051, Room 4630, South Building
Washington, DC 20250-1051

<https://ipad.fas.usda.gov/>

Telephone: (202) 720-1662 Fax: (202) 720-1158

This report uses information from the Foreign Agricultural Service’s (FAS) global network of agricultural attachés and counselors, official statistics of foreign governments and other foreign source materials, and the analysis of economic data and satellite imagery. Estimates of foreign area, yield, and production are from the International Production Assessment Division, FAS, and are reviewed by USDA’s Inter-Agency Commodity Estimates Committee. Estimates of U.S. area, yield, and production are from USDA’s National Agricultural Statistics Service. Numbers within the report may not add to totals because of rounding. This report reflects official USDA estimates released in the World Agricultural Supply and Demand Estimates (WASDE-580), August 10, 2018.

Printed copies are available from the National Technical Information Service. Download an order form at http://www.ntis.gov/products/specialty/usda/fas_a-g.asp, or call NTIS at 1-800-363-2068.

The FAS International Production Assessment Division prepared this report. The next issue of World Agricultural Production will be released after 12:00 p.m. Eastern Time, September 12, 2018.

Conversion Table

Metric tons to bushels

Wheat, soybeans	=	MT * 36.7437
Corn, sorghum, rye	=	MT * 39.36825
Barley	=	MT * 45.929625
Oats	=	MT * 68.894438

Metric tons to 480-lb bales

Cotton	=	MT * 4.592917
--------	---	---------------

Metric tons to hundredweight

Rice	=	MT * 22.04622
------	---	---------------

Area & weight

1 hectare	=	2.471044 acres
1 kilogram	=	2.204622 pounds



For further information, contact:
U.S. Department of Agriculture
Foreign Agricultural Service
Office of Global Analysis
International Production Assessment Division
Ag Box 1051, Room 4630, South Building
Washington, DC 20250-1051

Telephone: (202) 720-1662

Fax: (202) 720-1158

GENERAL INFORMATION

Director	Ronald Frantz	202-720-4056	ronald.frantz@fas.usda.gov
Deputy Director	Robert Tetrault	202-720-1071	robert.tetrault@fas.usda.gov
Administrative Assistant	Shelisa Johnson	202-720-1662	shelisa.johnson@fas.usda.gov
USDA Remote Sensing Advisor	Glenn Bethel	202-720-1280	glenn.bethel@fas.usda.gov
Sr. Analyst/Technical Lead	Curt Reynolds, Ph.D.	202-690-0134	curt.reynolds@fas.usda.gov
Sr. Analyst/ Satellite Imagery	Dath Mita, Ph.D.	202-720-7339	dath.mita@fas.usda.gov
Archives Manager/Technical Lead			
Sr. Analyst/ Global Special	Jim Crutchfield	202-690-0135	james.crutchfield@fas.usda.gov
Projects Manager/Technical Lead			
Sr. Analyst/Technical Lead	Vacant		
GIS Analyst/WAP Coordinator	Justin Jenkins	202-720-0419	justin.jenkins@fas.usda.gov

COUNTRY- AND REGION-SPECIFIC INFORMATION

South America, Argentina, Venezuela, and Colombia	Denise McWilliams, Ph.D.	202-720-0107	denise.mcwilliams@fas.usda.gov
Western and Central Europe, and North Africa	Bryan Purcell	202-690-0138	bryan.purcell@fas.usda.gov
Russia, Ukraine, Kazakhstan	Mark Lindeman	202-690-0143	mark.lindeman@fas.usda.gov
South Asia, Sri Lanka	Arnella Trent	202-720-0881	arnella.trent@fas.usda.gov
Bangladesh, India, and Nepal			
East Asia, China, and Japan	Dath Mita, Ph.D.	202-720-7339	dath.mita@fas.usda.gov
Sub-Saharan Africa,	Curt Reynolds, Ph.D.	202-690-0134	curt.reynolds@fas.usda.gov
Nigeria and South Africa			
S.E. Asia, Indonesia, Thailand, Malaysia, Cambodia and Vietnam	Vacant		
Central America, Mexico, and Western United States	Justin Jenkins	202-720-0419	justin.jenkins@fas.usda.gov
Australia, New Zealand, Pakistan	Jim Crutchfield	202-690-0135	james.crutchfield@fas.usda.gov
Papua New Guinea and South Pacific Islands			
Middle East, Central Asia, Afghanistan	Bill Baker, Ph.D.	202-260-8109	william.baker@fas.usda.gov
Iraq, Iran, and Syria			
Canada, Caribbean,	Katie McGaughey	202-720-9210	katie.mcgaughey@fas.usda.gov
Eastern United States			
Brazil	Maria Anulacion	202-720-6878	maria.anulacion@fas.usda.gov



The Foreign Agricultural Service (FAS) updates its production, supply and distribution (PSD) database for cotton, oilseeds, and grains at 12:00 p.m. on the day the *World Agricultural Supply and Demand Estimates* (WASDE) report is released. This circular is released by 12:15 p.m.

FAS Reports and Databases:

Current *World Market and Trade and World Agricultural Production* Reports:

<http://apps.fas.usda.gov/psdonline/psdDataPublications.aspx>

Archives *World Market and Trade and World Agricultural Production* Reports:

<http://usda.mannlib.cornell.edu/MannUsda/viewTaxonomy.do?taxonomyID=7>

Production, Supply and Distribution Database (PSD Online):

<http://apps.fas.usda.gov/psdonline/psdHome.aspx>

EU Countries Area & Production Estimates

<http://apps.fas.usda.gov/psdonline/psdDownload.aspx>

Global Agricultural Trade System (U.S. Exports and Imports):

<http://apps.fas.usda.gov/gats/default.aspx>

Export Sales Report:

<http://apps.fas.usda.gov/esrquery/>

Global Agricultural Information Network (Agricultural Attaché Reports):

<http://gain.fas.usda.gov/Pages/Default.aspx>

Other USDA Reports:

World Agricultural Supply and Demand Estimates (WASDE):

<http://www.usda.gov/oce/commodity/wasde/>

Economic Research Service:

<http://www.ers.usda.gov/topics/crops>

National Agricultural Statistics Service:

<http://www.nass.usda.gov/Publications/>

Table 01 World Crop Production Summary

Million Metric Tons

Commodity	World -	Total Foreign	North America			Former Soviet		European	Asia (WAP)					South America		Selected Other			All Others
			United States	Canada -	Mexico -	Russia -	Ukraine -		China -	India -	Indonesia	Pakistan	Thailand	Argentina	Brazil -	Australia	South Africa	Turkey -	
---Million metric tons---																			
Wheat																			
2016/17	752.0	689.2	62.8	32.1	3.9	72.5	26.8	nr	128.8	87.0	0.0	25.6	0.0	18.4	6.7	31.8	1.9	17.3	236.2
2017/18 prel.	758.0	710.6	47.4	30.0	3.5	85.0	27.0	nr	129.8	98.5	0.0	26.7	0.0	18.0	4.3	21.3	1.5	21.0	244.1
2018/19 proj.																			
Jul	736.3	685.1	51.2	32.5	2.8	67.0	25.5	nr	128.0	97.0	0.0	25.5	0.0	19.5	4.9	22.0	1.8	20.0	238.6
Aug	729.6	678.6	51.1	32.5	2.8	68.0	25.5	nr	128.0	97.0	0.0	26.3	0.0	19.5	4.7	22.0	1.8	19.0	231.5
Coarse Grains																			
2016/17	1,369.9	967.3	402.6	26.6	33.3	40.8	39.2	nr	226.9	43.5	10.9	6.6	5.3	48.6	101.6	17.3	18.1	10.8	338.0
2017/18 prel.	1,314.5	930.2	384.3	26.2	32.5	41.7	34.1	nr	223.4	45.0	11.4	6.6	5.1	40.3	85.8	11.9	14.3	13.0	339.0
2018/19 proj.																			
Jul	1,336.9	961.8	375.1	27.5	31.9	36.4	38.3	nr	232.8	43.9	11.9	6.8	5.2	48.9	99.0	12.3	14.6	13.1	339.4
Aug	1,342.1	957.5	384.7	27.5	31.9	36.0	40.1	nr	232.8	43.9	11.9	6.8	5.2	48.9	97.5	12.3	14.1	13.1	335.6
Rice, Milled																			
2016/17	486.7	479.6	7.1	0.0	0.2	0.7	0.0	nr	145.0	109.7	36.9	6.8	19.2	0.9	8.4	0.6	0.0	0.5	150.8
2017/18 prel.	488.5	482.9	5.7	0.0	0.2	0.6	0.0	nr	146.0	110.0	37.0	7.5	20.4	0.9	8.1	0.5	0.0	0.5	151.2
2018/19 proj.																			
Jul	487.8	481.0	6.8	0.0	0.2	0.6	0.0	nr	142.2	109.0	37.3	7.4	21.2	0.8	8.0	0.5	0.0	0.5	153.3
Aug	487.6	480.9	6.7	0.0	0.2	0.6	0.0	nr	142.2	109.0	37.3	7.4	21.2	0.8	8.0	0.5	0.0	0.5	153.1
Total Grains																			
2016/17	2,608.6	2,136.1	472.6	58.8	37.3	114.0	66.1	nr	500.7	240.2	47.8	39.1	24.5	67.8	116.7	49.7	20.0	28.5	725.1
2017/18 prel.	2,561.0	2,123.7	437.3	56.2	36.2	127.3	61.1	nr	499.2	253.5	48.4	40.7	25.4	59.2	98.1	33.7	15.8	34.5	734.4
2018/19 proj.																			
Jul	2,561.0	2,127.9	433.1	60.0	34.9	104.0	63.8	nr	503.0	249.9	49.2	39.7	26.4	69.2	111.9	34.8	16.4	33.6	731.2
Aug	2,559.3	2,116.9	442.4	60.0	34.9	104.6	65.6	nr	503.0	249.9	49.2	40.5	26.4	69.2	110.2	34.8	15.9	32.6	720.1
Oilseeds																			
2016/17	574.2	447.3	126.9	26.2	1.1	15.0	20.7	nr	56.5	37.3	12.8	3.7	0.9	60.2	117.6	5.7	2.3	2.8	84.5
2017/18 prel.	573.4	442.4	131.0	29.6	1.3	15.5	19.8	nr	60.3	34.1	13.3	4.0	1.0	41.6	123.3	5.3	2.5	3.2	87.7
2018/19 proj.																			
Jul	592.6	464.8	127.8	28.5	1.4	15.9	19.9	nr	60.5	36.6	13.6	4.2	1.0	61.9	124.4	4.4	2.5	3.3	86.7
Aug	603.1	467.6	135.6	28.5	1.4	16.7	21.8	nr	60.5	36.6	13.6	4.2	1.0	62.0	124.4	4.4	2.5	3.6	86.4
Cotton																			
2016/17	106.6	89.5	17.2	0.0	0.8	0.0	0.0	1.3	22.8	27.0	0.0	7.7	0.0	0.8	7.0	4.1	0.1	3.2	14.8
2017/18 prel.	123.5	102.6	20.9	0.0	1.6	0.0	0.0	1.5	27.5	29.0	0.0	8.2	0.0	0.8	9.2	4.7	0.2	4.0	15.9
2018/19 proj.																			
Jul	120.1	101.6	18.5	0.0	1.8	0.0	0.0	1.6	26.5	28.7	0.0	8.5	0.0	0.8	9.5	3.7	0.2	4.3	16.1
Aug	120.5	101.3	19.2	0.0	1.8	0.0	0.0	1.6	26.5	28.7	0.0	8.5	0.0	1.0	9.5	3.6	0.2	4.5	15.5

1/ Includes wheat, coarse grains, and rice (milled) shown above.

Table 02 Wheat Area, Yield, and Production

Country / Region	Area (Million hectares)				Yield (Metric tons per hectare)				Production (Million metric tons)				Change in Production			
	2016/17	Prel.	2018/19 Proj.		2016/17	Prel.	2018/19 Proj.		2016/17	Prel.	2018/19 Proj.		From last month		From last year	
		2017/18	Jul	Aug		2017/18	Jul	Aug		2017/18	Jul	Aug	MMT	Percent	MMT	Percent
World	222.15	219.51	217.13	217.26	3.39	3.45	3.39	3.36	751.99	758.02	736.26	729.63	-6.63	-0.90	-28.39	-3.75
United States	17.75	15.21	16.01	16.01	3.54	3.11	3.20	3.19	62.83	47.37	51.21	51.08	-0.13	-0.25	3.71	7.83
Total Foreign	204.41	204.30	201.12	201.25	3.37	3.48	3.41	3.37	689.16	710.65	685.05	678.55	-6.50	-0.95	-32.10	-4.52
European Union - 28	27.23	26.32	25.64	25.63	5.34	5.76	5.65	5.36	145.37	151.68	145.00	137.50	-7.50	-5.17	-14.18	-9.35
China	24.19	23.99	23.70	23.70	5.33	5.41	5.40	5.40	128.85	129.77	128.00	128.00	0.00	0.00	-1.77	-1.36
South Asia																
India	30.22	30.79	30.00	30.00	2.88	3.20	3.23	3.23	87.00	98.51	97.00	97.00	0.00	0.00	-1.51	-1.53
Pakistan	9.22	8.97	8.95	8.95	2.78	2.97	2.85	2.94	25.63	26.67	25.50	26.30	0.80	3.14	-0.37	-1.40
Afghanistan	2.55	2.55	2.50	2.50	2.00	1.96	1.60	1.60	5.10	5.00	4.00	4.00	0.00	0.00	-1.00	-20.00
Nepal	0.76	0.77	0.76	0.76	2.41	2.31	2.35	2.35	1.83	1.78	1.79	1.79	0.00	0.00	0.01	0.34
Former Soviet Union - 12																
Russia	27.00	27.34	25.50	25.50	2.69	3.11	2.63	2.67	72.53	84.99	67.00	68.00	1.00	1.49	-16.99	-19.99
Russia Winter	13.64	14.64	14.00	14.00	3.78	4.17	3.46	3.46	51.54	60.99	48.50	48.50	0.00	0.00	-12.49	-20.47
Russia Spring	13.37	12.70	11.50	11.50	1.57	1.89	1.61	1.70	20.99	24.01	18.50	19.50	1.00	5.41	-4.51	-18.77
Ukraine	6.46	6.64	6.70	6.90	4.15	4.06	3.81	3.70	26.79	26.98	25.50	25.50	0.00	0.00	-1.48	-5.49
Kazakhstan	12.37	11.91	11.50	11.50	1.21	1.24	1.22	1.26	14.99	14.80	14.00	14.50	0.50	3.57	-0.30	-2.04
Uzbekistan	1.40	1.40	1.40	1.40	4.96	4.93	4.29	4.29	6.94	6.90	6.00	6.00	0.00	0.00	-0.90	-13.04
Belarus	0.71	0.72	0.70	0.70	3.29	3.65	3.71	3.71	2.34	2.62	2.60	2.60	0.00	0.00	-0.02	-0.76
Canada	8.98	9.00	9.70	9.70	3.58	3.33	3.35	3.35	32.14	30.00	32.50	32.50	0.00	0.00	2.50	8.33
South America																
Argentina	5.56	5.60	6.00	6.00	3.31	3.21	3.25	3.25	18.40	18.00	19.50	19.50	0.00	0.00	1.50	8.33
Brazil	2.12	1.92	2.00	2.00	3.17	2.23	2.45	2.35	6.73	4.26	4.90	4.70	-0.20	-4.08	0.44	10.23
Uruguay	0.22	0.20	0.20	0.20	3.52	2.23	3.00	3.00	0.76	0.44	0.60	0.60	0.00	0.00	0.16	36.36
Australia	12.19	12.25	12.00	12.00	2.61	1.74	1.83	1.83	31.82	21.30	22.00	22.00	0.00	0.00	0.70	3.29
Africa																
Egypt	1.26	1.32	1.32	1.32	6.43	6.40	6.40	6.40	8.10	8.45	8.45	8.45	0.00	0.00	0.00	0.00
Morocco	2.41	3.32	3.10	3.10	1.13	2.14	2.65	2.65	2.73	7.09	8.20	8.20	0.00	0.00	1.11	15.62
Ethiopia	1.70	1.70	1.70	1.70	2.68	2.65	2.65	2.65	4.54	4.50	4.50	4.50	0.00	0.00	0.00	0.00
Algeria	1.30	1.60	1.60	1.60	1.54	1.50	1.88	1.88	2.00	2.40	3.00	3.00	0.00	0.00	0.60	25.00
Middle East																
Turkey	7.82	7.80	7.62	7.62	2.21	2.69	2.63	2.50	17.25	21.00	20.00	19.00	-1.00	-5.00	-2.00	-9.52
Iran	6.70	6.70	6.70	6.70	2.16	2.09	2.16	2.16	14.50	14.00	14.50	14.50	0.00	0.00	0.50	3.57
Iraq	2.35	2.23	2.30	2.30	1.80	1.81	1.74	1.74	4.23	4.03	4.00	4.00	0.00	0.00	-0.03	-0.62
Syria	1.10	1.10	1.10	1.10	2.18	2.00	1.82	1.82	2.40	2.20	2.00	2.00	0.00	0.00	-0.20	-9.09
Mexico	0.72	0.67	0.54	0.54	5.34	5.24	5.23	5.23	3.87	3.49	2.80	2.80	0.00	0.00	-0.69	-19.86
Serbia	0.61	0.54	0.68	0.68	4.92	4.26	4.59	4.74	3.00	2.30	3.10	3.20	0.10	3.23	0.90	39.13
Others	-19.75	-20.38	-18.28	-18.33	2.69	3.31	2.65	2.71	-53.19	-67.52	-48.39	-49.59	-1.20	100.00	17.94	100.00

Table 03 Total Coarse Grain Area, Yield, and Production

Country / Region	Area (Million hectares)				Yield (Metric tons per hectare)				Production (Million metric tons)				Change in Production			
	2016/17	Prel.	2018/19 Proj.		2016/17	Prel.	2018/19 Proj.		2016/17	Prel.	2018/19 Proj.		From last month		From last year	
		2017/18	Jul	Aug		2017/18	Jul	Aug		2017/18	Jul	Aug	MMT	Percent	MMT	Percent
World	329.67	318.85	322.15	321.84	4.16	4.12	4.15	4.17	1,369.93	1,314.47	1,336.91	1,342.13	5.22	0.39	27.66	2.10
United States	39.20	36.74	36.61	36.61	10.27	10.46	10.25	10.51	402.61	384.26	375.10	384.67	9.57	2.55	0.41	0.11
Total Foreign	290.47	282.10	285.54	285.23	3.33	3.30	3.37	3.36	967.31	930.22	961.82	957.47	-4.35	-0.45	27.25	2.93
China	38.88	37.63	38.76	38.76	5.83	5.94	6.01	6.01	226.87	223.39	232.81	232.81	0.00	0.00	9.41	4.21
European Union	29.45	29.17	29.34	29.06	5.19	5.25	5.27	5.18	152.95	152.97	154.66	150.43	-4.23	-2.74	-2.54	-1.66
South America																
Brazil	18.62	17.91	18.82	18.63	5.46	4.79	5.26	5.23	101.58	85.79	98.96	97.49	-1.47	-1.49	11.69	13.63
Argentina	6.84	7.00	7.00	7.00	7.11	5.76	6.98	6.98	48.57	40.33	48.85	48.85	0.00	0.00	8.52	21.13
Former Soviet Union - 12																
Russia	15.14	14.74	14.58	14.33	2.69	2.83	2.50	2.51	40.77	41.71	36.43	35.98	-0.45	-1.24	-5.74	-13.75
Ukraine	7.82	7.59	7.61	7.44	5.01	4.49	5.03	5.39	39.22	34.07	38.25	40.10	1.85	4.82	6.02	17.68
Kazakhstan	2.33	2.49	2.63	2.63	1.90	1.79	1.76	1.76	4.43	4.45	4.63	4.63	0.00	0.00	0.17	3.89
Belarus	0.96	1.00	1.05	1.05	3.16	3.30	3.34	3.34	3.03	3.29	3.51	3.51	0.00	0.00	0.22	6.69
Africa																
Nigeria	14.05	13.80	13.80	13.80	1.36	1.38	1.40	1.40	19.11	19.05	19.30	19.30	0.00	0.00	0.25	1.31
South Africa	3.18	2.82	3.01	2.91	5.69	5.05	4.84	4.84	18.12	14.25	14.56	14.06	-0.50	-3.43	-0.19	-1.35
Tanzania	5.31	5.35	5.35	5.35	1.11	1.21	1.22	1.22	5.90	6.50	6.55	6.55	0.00	0.00	0.05	0.77
Burkina	3.83	3.85	3.85	3.85	1.09	0.97	1.14	1.14	4.17	3.73	4.40	4.40	0.00	0.00	0.67	18.06
Ethiopia	5.43	5.69	5.71	5.71	2.78	2.45	2.48	2.48	15.09	13.96	14.18	14.18	0.00	0.00	0.22	1.58
Egypt	0.97	1.02	1.02	1.02	7.05	7.09	7.09	7.09	6.86	7.26	7.26	7.26	0.00	0.00	0.00	0.00
Mali	4.63	3.95	3.95	3.95	1.30	1.71	1.24	1.24	6.01	6.76	4.90	4.90	0.00	0.00	-1.86	-27.46
India	25.18	23.57	24.18	24.18	1.73	1.91	1.82	1.82	43.47	45.00	43.89	43.89	0.00	0.00	-1.11	-2.47
Southeast Asia																
Indonesia	3.40	3.45	3.50	3.50	3.21	3.30	3.40	3.40	10.90	11.40	11.90	11.90	0.00	0.00	0.50	4.39
Philippines	2.69	2.61	2.64	2.64	3.01	3.09	3.14	3.14	8.09	8.04	8.30	8.30	0.00	0.00	0.26	3.23
Vietnam	1.10	1.05	0.85	0.85	4.60	4.65	4.65	4.65	5.06	4.88	3.95	3.95	0.00	0.00	-0.93	-19.06
Thailand	1.20	1.15	1.18	1.18	4.39	4.39	4.40	4.40	5.25	5.05	5.18	5.18	0.00	0.00	0.13	2.57
Mexico	9.34	8.95	9.11	9.11	3.56	3.63	3.50	3.50	33.26	32.51	31.89	31.89	0.00	0.00	-0.62	-1.91
Canada	4.82	4.72	4.96	4.96	5.52	5.56	5.55	5.55	26.62	26.21	27.53	27.53	0.00	0.00	1.32	5.04
Australia	6.38	5.31	5.76	5.76	2.71	2.24	2.14	2.14	17.27	11.91	12.35	12.35	0.00	0.00	0.44	3.68
Middle East																
Turkey	4.19	4.22	4.34	4.34	2.57	3.08	3.01	3.01	10.78	12.97	13.05	13.05	0.00	0.00	0.08	0.62
Iran	1.75	1.79	1.79	1.79	2.24	2.41	2.41	2.41	3.92	4.32	4.32	4.32	0.00	0.00	0.00	0.00
Others	72.99	71.30	70.77	71.44	1.51	1.55	1.56	1.55	110.04	110.42	110.24	110.69	0.46	0.42	0.27	0.25

World and Selected Countries and Regions; Coarse Grain includes: Barley, Corn, Millet, Mixed Grains, Oats, Rye and Sorghum

Table 04 Corn Area, Yield, and Production

Country / Region	Area (Million hectares)				Yield (Metric tons per hectare)				Production (Million metric tons)				Change in Production			
	2016/17	Prel.	2018/19 Proj.		2016/17	Prel.	2018/19 Proj.		2016/17	Prel.	2018/19 Proj.		From last month		From last year	
		2017/18	Jul	Aug		2017/18	Jul	Aug		2017/18	Jul	Aug	MMT	Percent	MMT	Percent
World	186.88	183.62	183.95	184.08	5.77	5.63	5.73	5.76	1,078.56	1,033.30	1,054.30	1,061.05	6.75	0.64	27.75	2.69
United States	35.11	33.47	33.09	33.09	10.96	11.08	10.92	11.20	384.78	370.96	361.46	370.51	9.06	2.51	-0.45	-0.12
Total Foreign	151.77	150.15	150.86	150.99	4.57	4.41	4.59	4.57	693.78	662.34	692.85	690.54	-2.31	-0.33	28.20	4.26
China	36.77	35.45	36.50	36.50	5.97	6.09	6.16	6.16	219.55	215.89	225.00	225.00	0.00	0.00	9.11	4.22
South America																
Brazil	17.60	16.80	17.70	17.50	5.60	4.94	5.42	5.40	98.50	83.00	96.00	94.50	-1.50	-1.56	11.50	13.86
Argentina	4.90	5.10	5.00	5.00	8.37	6.47	8.20	8.20	41.00	33.00	41.00	41.00	0.00	0.00	8.00	24.24
Bolivia	0.09	0.37	0.33	0.33	1.38	2.50	2.65	2.65	0.12	0.93	0.88	0.88	0.00	0.00	-0.05	-5.41
European Union	8.57	8.37	8.38	8.29	7.22	7.44	7.34	7.22	61.89	62.28	61.50	59.80	-1.70	-2.76	-2.48	-3.98
Africa																
South Africa	3.00	2.65	2.80	2.70	5.86	5.21	5.00	5.00	17.55	13.80	14.00	13.50	-0.50	-3.57	-0.30	-2.17
Nigeria	6.50	6.50	6.50	6.50	1.65	1.69	1.69	1.69	10.76	11.00	11.00	11.00	0.00	0.00	0.00	0.00
Ethiopia	2.14	2.23	2.25	2.25	3.42	3.14	3.16	3.16	7.30	7.00	7.10	7.10	0.00	0.00	0.10	1.43
Egypt	0.75	0.80	0.80	0.80	8.00	8.00	8.00	8.00	6.00	6.40	6.40	6.40	0.00	0.00	0.00	0.00
Tanzania	4.20	4.20	4.20	4.20	1.15	1.27	1.29	1.29	4.82	5.35	5.40	5.40	0.00	0.00	0.05	0.93
Malawi	1.67	1.70	1.70	1.70	1.42	2.04	1.76	1.76	2.37	3.46	3.00	3.00	0.00	0.00	-0.46	-13.39
Zambia	1.16	1.43	1.30	1.39	2.48	2.54	2.69	1.72	2.87	3.65	3.50	2.40	-1.11	-31.57	-1.25	-34.31
Kenya	2.34	2.10	2.15	2.15	1.43	1.40	1.49	1.49	3.34	2.95	3.20	3.20	0.00	0.00	0.25	8.47
Uganda	1.15	1.10	1.10	1.10	2.32	2.55	2.27	2.27	2.66	2.80	2.50	2.50	0.00	0.00	-0.30	-10.71
Zimbabwe	0.77	1.88	1.20	1.72	0.66	1.15	0.83	0.99	0.51	2.16	1.00	1.70	0.70	70.00	-0.46	-21.11
Former Soviet Union - 12																
Ukraine	4.24	4.43	4.60	4.50	6.60	5.44	6.52	6.89	27.97	24.12	30.00	31.00	1.00	3.33	6.89	28.55
Russia	2.78	2.70	2.45	2.45	5.51	4.90	4.90	4.90	15.31	13.23	12.00	12.00	0.00	0.00	-1.23	-9.29
South Asia																
India	9.63	9.22	9.20	9.20	2.69	2.92	2.83	2.83	25.90	26.88	26.00	26.00	0.00	0.00	-0.88	-3.27
Pakistan	1.35	1.30	1.32	1.32	4.53	4.69	4.77	4.77	6.10	6.10	6.30	6.30	0.00	0.00	0.20	3.28
Nepal	0.89	0.90	0.90	0.90	2.62	2.84	2.83	2.83	2.34	2.56	2.55	2.55	0.00	0.00	-0.01	-0.20
Southeast Asia																
Indonesia	3.40	3.45	3.50	3.50	3.21	3.30	3.40	3.40	10.90	11.40	11.90	11.90	0.00	0.00	0.50	4.39
Philippines	2.69	2.61	2.64	2.64	3.01	3.09	3.14	3.14	8.09	8.04	8.30	8.30	0.00	0.00	0.26	3.23
Vietnam	1.10	1.05	0.85	0.85	4.60	4.65	4.65	4.65	5.06	4.88	3.95	3.95	0.00	0.00	-0.93	-19.06
Thailand	1.17	1.12	1.15	1.15	4.45	4.45	4.46	4.46	5.20	5.00	5.13	5.13	0.00	0.00	0.13	2.60
Mexico	7.51	7.23	7.20	7.20	3.67	3.71	3.61	3.61	27.58	26.80	26.00	26.00	0.00	0.00	-0.80	-2.99
Canada	1.41	1.41	1.45	1.45	9.82	10.04	10.21	10.21	13.89	14.10	14.80	14.80	0.00	0.00	0.70	4.96
Turkey	0.57	0.60	0.53	0.53	9.65	10.00	9.62	9.62	5.50	6.00	5.10	5.10	0.00	0.00	-0.90	-15.00
Others	23.44	23.46	23.17	23.17	2.59	2.54	2.56	2.60	60.72	59.59	59.34	60.14	0.80	1.35	0.55	0.93

World and Selected Countries and Regions

Table 05 Barley Area, Yield, and Production

Country / Region	Area (Million hectares)				Yield (Metric tons per hectare)				Production (Million metric tons)				Change in Production			
	2016/17	Prel.	2018/19 Proj.		2016/17	Prel.	2018/19 Proj.		2016/17	Prel.	2018/19 Proj.		From last month		From last year	
		2017/18	Jul	Aug		2017/18	Jul	Aug		2017/18	Jul	Aug	MMT	Percent	MMT	Percent
World	49.29	48.05	49.00	48.96	2.99	3.00	2.95	2.95	147.16	144.26	144.63	144.37	-0.26	-0.18	0.11	0.08
United States	1.04	0.79	0.83	0.83	4.19	3.91	4.07	4.11	4.35	3.09	3.37	3.40	0.03	1.01	0.31	10.03
Total Foreign	48.26	47.26	48.17	48.13	2.96	2.99	2.93	2.93	142.81	141.17	141.26	140.97	-0.29	-0.21	-0.20	-0.14
European Union	12.32	12.14	12.17	12.10	4.87	4.86	4.97	4.89	59.98	59.06	60.50	59.15	-1.35	-2.23	0.09	0.15
Former Soviet Union - 12																
Russia	7.96	7.85	7.90	7.90	2.21	2.57	2.15	2.15	17.55	20.18	17.00	17.00	0.00	0.00	-3.18	-15.77
Ukraine	3.05	2.65	2.50	2.50	3.24	3.28	2.80	3.20	9.87	8.70	7.00	8.00	1.00	14.29	-0.70	-7.99
Kazakhstan	1.89	2.07	2.20	2.20	1.71	1.60	1.59	1.59	3.23	3.31	3.50	3.50	0.00	0.00	0.20	5.90
Belarus	0.45	0.45	0.50	0.50	2.78	3.14	3.40	3.40	1.25	1.42	1.70	1.70	0.00	0.00	0.28	19.72
Azerbaijan	0.36	0.32	0.35	0.35	2.69	2.56	2.79	2.79	0.95	0.82	0.98	0.98	0.00	0.00	0.16	18.90
Canada	2.27	2.10	2.35	2.35	3.90	3.76	3.74	3.74	8.84	7.90	8.80	8.80	0.00	0.00	0.90	11.39
Australia	4.83	3.90	4.30	4.30	2.79	2.28	2.05	2.05	13.51	8.90	8.80	8.80	0.00	0.00	-0.10	-1.12
Middle East																
Turkey	3.40	3.40	3.60	3.60	1.40	1.88	2.06	2.06	4.75	6.40	7.40	7.40	0.00	0.00	1.00	15.63
Iran	1.61	1.60	1.60	1.60	1.86	1.94	1.94	1.94	3.00	3.10	3.10	3.10	0.00	0.00	0.00	0.00
Iraq	1.20	1.07	1.00	1.00	1.29	1.24	1.00	1.00	1.55	1.33	1.00	1.00	0.00	0.00	-0.33	-24.53
Syria	0.88	0.80	0.80	0.80	0.82	0.97	0.63	0.63	0.72	0.78	0.50	0.50	0.00	0.00	-0.28	-35.65
Africa																
Ethiopia	0.96	1.20	1.20	1.20	2.11	1.75	1.81	1.81	2.03	2.10	2.17	2.17	0.00	0.00	0.07	3.33
Morocco	1.21	1.80	1.50	1.50	0.51	1.11	1.67	1.67	0.62	2.00	2.50	2.50	0.00	0.00	0.50	25.00
Algeria	0.90	0.76	0.90	0.90	1.11	1.27	1.56	1.56	1.00	0.97	1.40	1.40	0.00	0.00	0.43	44.63
Tunisia	0.28	0.36	0.34	0.34	1.34	1.31	1.31	1.31	0.38	0.47	0.45	0.45	0.00	0.00	-0.03	-5.32
South Africa	0.09	0.09	0.10	0.10	3.99	3.37	3.65	3.65	0.36	0.31	0.35	0.35	0.00	0.00	0.04	14.01
South America																
Argentina	0.87	0.94	1.00	1.00	3.79	4.00	4.00	4.00	3.30	3.74	4.00	4.00	0.00	0.00	0.26	6.95
Uruguay	0.19	0.10	0.14	0.17	3.57	4.10	4.50	4.00	0.68	0.41	0.63	0.66	0.03	4.76	0.25	60.98
Brazil	0.10	0.11	0.11	0.12	3.91	2.61	2.92	2.88	0.38	0.28	0.32	0.35	0.03	9.52	0.06	22.34
India	0.59	0.66	0.68	0.68	2.44	2.67	2.64	2.64	1.44	1.75	1.79	1.79	0.00	0.00	0.04	2.29
China	0.43	0.43	0.45	0.45	4.08	4.19	4.11	4.11	1.75	1.80	1.85	1.85	0.00	0.00	0.05	2.78
Mexico	0.33	0.36	0.36	0.36	2.96	2.81	2.78	2.78	0.98	1.00	1.00	1.00	0.00	0.00	0.00	-0.40
Afghanistan	0.22	0.25	0.25	0.25	1.83	1.60	1.40	1.40	0.40	0.40	0.35	0.35	0.00	0.00	-0.05	-12.50
Others	1.88	1.86	1.88	1.88	2.29	2.18	2.23	2.23	4.31	4.05	4.19	4.19	0.00	0.00	0.14	3.38

World and Selected Countries and Regions

Table 06 Oats Area, Yield, and Production

Country / Region	Area (Million hectares)				Yield (Metric tons per hectare)				Production (Million metric tons)				Change in Production			
	2016/17	Prel.	2018/19 Proj.		2016/17	Prel.	2018/19 Proj.		2016/17	Prel.	2018/19 Proj.		From last month		From last year	
		2017/18	Jul	Aug		2017/18	Jul	Aug		2017/18	Jul	Aug	MMT	Percent	MMT	Percent
World	9.67	9.54	9.53	9.54	2.50	2.46	2.46	2.47	24.18	23.51	23.48	23.55	0.08	0.32	0.05	0.20
United States	0.40	0.32	0.41	0.41	2.37	2.21	2.36	2.34	0.94	0.72	0.96	0.95	-0.01	-1.14	0.24	32.91
Total Foreign	9.27	9.22	9.12	9.14	2.51	2.47	2.47	2.47	23.24	22.79	22.51	22.60	0.09	0.38	-0.19	-0.83
European Union	2.57	2.68	2.68	2.68	3.13	3.03	3.19	3.21	8.05	8.11	8.54	8.60	0.06	0.71	0.49	6.08
Former Soviet Union - 12																
Russia	2.75	2.78	2.75	2.75	1.73	1.96	1.75	1.75	4.75	5.44	4.80	4.80	0.00	0.00	-0.64	-11.78
Ukraine	0.21	0.21	0.20	0.20	2.38	2.31	2.38	2.38	0.51	0.48	0.48	0.48	0.00	0.00	-0.01	-1.25
Belarus	0.15	0.15	0.16	0.16	2.67	3.33	2.88	2.88	0.39	0.50	0.46	0.46	0.00	0.00	-0.04	-8.00
Kazakhstan	0.21	0.21	0.22	0.22	1.60	1.34	1.40	1.40	0.34	0.29	0.30	0.30	0.00	0.00	0.02	5.26
Canada	0.93	1.05	1.00	1.00	3.49	3.52	3.45	3.45	3.23	3.70	3.45	3.45	0.00	0.00	-0.25	-6.76
South America																
Argentina	0.32	0.22	0.25	0.25	2.45	2.24	2.40	2.40	0.79	0.49	0.60	0.60	0.00	0.00	0.11	21.95
Brazil	0.29	0.34	0.34	0.35	2.84	1.86	2.19	2.18	0.83	0.63	0.75	0.77	0.03	3.36	0.14	21.45
Chile	0.14	0.14	0.14	0.14	5.20	4.75	5.00	5.00	0.71	0.67	0.68	0.68	0.00	0.00	0.01	0.75
Uruguay	0.03	0.03	0.02	0.02	1.58	1.52	1.58	1.58	0.04	0.04	0.04	0.04	0.00	0.00	0.00	0.00
Oceania																
Australia	1.03	0.74	0.70	0.70	2.20	1.51	1.57	1.57	2.27	1.12	1.10	1.10	0.00	0.00	-0.02	-1.79
New Zealand	0.01	0.01	0.01	0.01	5.38	5.67	5.33	5.33	0.04	0.03	0.03	0.03	0.00	0.00	0.00	-5.88
China	0.21	0.21	0.22	0.22	1.41	1.43	1.42	1.42	0.29	0.30	0.31	0.31	0.00	0.00	0.01	1.67
Africa																
Algeria	0.09	0.09	0.09	0.09	1.29	1.29	1.29	1.29	0.11	0.11	0.11	0.11	0.00	0.00	0.00	0.00
Morocco	0.05	0.05	0.05	0.05	1.44	1.44	1.40	1.40	0.07	0.07	0.06	0.06	0.00	0.00	0.00	-3.08
South Africa	0.04	0.03	0.03	0.03	1.60	1.83	1.83	1.83	0.06	0.06	0.06	0.06	0.00	0.00	0.00	0.00
Other Europe																
Norway	0.08	0.08	0.08	0.08	4.34	4.00	4.00	4.00	0.33	0.30	0.30	0.30	0.00	0.00	0.00	0.00
Serbia	0.03	0.03	0.03	0.03	2.17	2.17	2.17	2.17	0.07	0.07	0.07	0.07	0.00	0.00	0.00	0.00
Albania	0.01	0.01	0.01	0.01	2.08	2.08	2.08	2.08	0.03	0.03	0.03	0.03	0.00	0.00	0.00	0.00
Bosnia and Herzegovina	0.01	0.01	0.01	0.01	2.90	2.57	3.00	3.00	0.03	0.02	0.03	0.03	0.00	0.00	0.01	66.67
Turkey	0.10	0.11	0.10	0.10	2.27	2.21	2.30	2.30	0.23	0.25	0.23	0.23	0.00	0.00	-0.02	-8.00
Mexico	0.04	0.04	0.05	0.05	1.89	1.64	1.80	1.80	0.07	0.07	0.09	0.09	0.00	0.00	0.02	25.00
Others	0.02	0.01	0.01	0.01	1.93	1.86	1.79	1.79	0.03	0.03	0.03	0.03	0.00	0.00	0.00	-3.85

World and Selected Countries and Regions

Table 07 Rye Area, Yield, and Production

Country / Region	Area (Million hectares)				Yield (Metric tons per hectare)				Production (Million metric tons)				Change in Production			
	2016/17	Prel.	2018/19 Proj.		2016/17	Prel.	2018/19 Proj.		2016/17	Prel.	2018/19 Proj.		From last month		From last year	
		2017/18	Jul	Aug		2017/18	Jul	Aug		2017/18	Jul	Aug	MMT	Percent	MMT	Percent
World	4.14	4.01	4.06	3.78	2.98	3.06	3.04	2.92	12.33	12.28	12.36	11.04	-1.32	-10.66	-1.25	-10.14
United States	0.17	0.12	0.14	0.14	2.04	2.12	1.84	1.84	0.34	0.25	0.26	0.26	0.00	0.00	0.02	6.91
Total Foreign	3.97	3.90	3.92	3.64	3.02	3.09	3.09	2.96	11.99	12.04	12.09	10.78	-1.32	-10.89	-1.26	-10.49
European Union	1.92	1.94	2.00	1.90	3.89	3.82	3.98	3.68	7.44	7.42	7.97	7.00	-0.97	-12.14	-0.42	-5.70
Former Soviet Union - 12																
Russia	1.25	1.17	1.15	0.98	2.03	2.17	1.91	1.90	2.54	2.54	2.20	1.85	-0.35	-15.91	-0.69	-27.28
Belarus	0.24	0.26	0.25	0.25	2.70	2.62	2.60	2.60	0.65	0.67	0.65	0.65	0.00	0.00	-0.02	-2.99
Ukraine	0.15	0.17	0.15	0.15	2.72	2.97	2.76	2.76	0.39	0.51	0.40	0.40	0.00	0.00	-0.11	-21.57
Kazakhstan	0.04	0.03	0.03	0.03	1.14	1.26	1.17	1.17	0.04	0.04	0.04	0.04	0.00	0.00	0.00	-10.26
Turkey	0.12	0.10	0.11	0.11	2.61	3.17	2.91	2.91	0.30	0.32	0.32	0.32	0.00	0.00	0.00	0.00
Canada	0.14	0.10	0.10	0.10	3.11	3.30	3.00	3.00	0.44	0.32	0.30	0.30	0.00	0.00	-0.02	-6.25
South America																
Chile	0.00	0.00	0.00	0.00	5.00	5.00	5.00	5.00	0.01	0.01	0.01	0.01	0.00	0.00	0.00	0.00
Argentina	0.04	0.04	0.05	0.05	1.93	2.12	2.11	2.11	0.08	0.09	0.10	0.10	0.00	0.00	0.01	9.20
Other Europe																
Bosnia and Herzegovina	0.00	0.00	0.00	0.00	3.25	3.67	3.67	3.67	0.01	0.01	0.01	0.01	0.00	0.00	0.00	0.00
Switzerland	0.00	0.00	0.00	0.00	5.50	5.50	5.50	5.50	0.01	0.01	0.01	0.01	0.00	0.00	0.00	0.00
Serbia	0.00	0.00	0.00	0.00	2.50	2.50	2.50	2.50	0.01	0.01	0.01	0.01	0.00	0.00	0.00	0.00
Australia	0.04	0.04	0.04	0.04	0.63	0.65	0.65	0.65	0.03	0.03	0.03	0.03	0.00	0.00	0.00	0.00
Others	0.03	0.04	0.04	0.04	1.30	1.72	1.72	1.72	0.04	0.06	0.06	0.06	0.00	0.00	0.00	0.00

World and Selected Countries and Regions

Table 08 Sorghum Area, Yield, and Production

Country / Region	Area (Million hectares)				Yield (Metric tons per hectare)				Production (Million metric tons)				Change in Production			
	Prel.		2018/19 Proj.		Prel.		2018/19 Proj.		Prel.		2018/19 Proj.		From last month		From last year	
	2016/17	2017/18	Jul	Aug	2016/17	2017/18	Jul	Aug	2016/17	2017/18	Jul	Aug	MMT	Percent	MMT	Percent
World	44.29	39.80	41.49	41.48	1.43	1.45	1.42	1.43	63.32	57.53	58.79	59.24	0.45	0.77	1.71	2.98
United States	2.49	2.04	2.14	2.14	4.89	4.53	4.22	4.45	12.20	9.24	9.04	9.54	0.49	5.44	0.29	3.17
Total Foreign	41.80	37.76	39.35	39.33	1.22	1.28	1.26	1.26	51.12	48.29	49.75	49.70	-0.04	-0.08	1.42	2.94
Africa																
Nigeria	5.82	5.80	5.80	5.80	1.18	1.13	1.17	1.17	6.89	6.55	6.80	6.80	0.00	0.00	0.25	3.82
Ethiopia	1.88	1.82	1.82	1.82	2.52	2.23	2.25	2.25	4.75	4.05	4.10	4.10	0.00	0.00	0.05	1.23
Sudan	9.16	6.30	7.00	7.00	0.71	0.59	0.57	0.57	6.47	3.74	4.00	4.00	0.00	0.00	0.26	6.87
Burkina	1.73	1.67	1.80	1.80	0.96	0.82	1.00	1.00	1.66	1.37	1.80	1.80	0.00	0.00	0.43	31.77
Mali	1.56	1.35	1.35	1.35	0.89	1.26	0.96	0.96	1.39	1.71	1.30	1.30	0.00	0.00	-0.41	-23.75
Niger	3.61	3.70	3.70	3.70	0.50	0.53	0.46	0.46	1.81	1.94	1.70	1.70	0.00	0.00	-0.24	-12.55
Cameroon	0.86	0.85	0.85	0.85	1.56	1.65	1.65	1.65	1.34	1.40	1.40	1.40	0.00	0.00	0.00	0.00
Tanzania	0.78	0.80	0.80	0.80	0.97	1.00	1.00	1.00	0.76	0.80	0.80	0.80	0.00	0.00	0.00	0.00
Egypt	0.14	0.14	0.14	0.14	5.36	5.36	5.36	5.36	0.75	0.75	0.75	0.75	0.00	0.00	0.00	0.00
Uganda	0.40	0.35	0.35	0.35	0.79	0.94	0.97	0.97	0.32	0.33	0.34	0.34	0.00	0.00	0.01	3.03
Ghana	0.23	0.25	0.25	0.25	1.00	1.12	1.12	1.12	0.23	0.28	0.28	0.28	0.00	0.00	0.00	0.00
Mozambique	0.26	0.30	0.30	0.30	0.45	0.50	0.50	0.50	0.12	0.15	0.15	0.15	0.00	0.00	0.00	0.00
South Africa	0.04	0.03	0.06	0.06	3.62	2.83	2.50	2.50	0.15	0.09	0.15	0.15	0.00	0.00	0.07	76.47
Mexico	1.47	1.32	1.50	1.50	3.17	3.51	3.20	3.20	4.64	4.64	4.80	4.80	0.00	0.00	0.17	3.56
South America																
Argentina	0.70	0.70	0.70	0.70	4.86	4.29	4.50	4.50	3.40	3.00	3.15	3.15	0.00	0.00	0.15	5.00
Brazil	0.63	0.66	0.67	0.66	2.97	2.85	2.84	2.84	1.87	1.87	1.89	1.86	-0.03	-1.43	-0.01	-0.37
South Asia																
India	5.86	4.83	5.20	5.20	0.78	0.98	0.88	0.88	4.57	4.73	4.60	4.60	0.00	0.00	-0.13	-2.75
Pakistan	0.26	0.20	0.23	0.23	0.58	0.65	0.62	0.62	0.15	0.13	0.14	0.14	0.00	0.00	0.01	7.69
China	0.63	0.68	0.72	0.72	4.78	4.74	4.79	4.79	2.99	3.20	3.45	3.45	0.00	0.00	0.25	7.81
Australia	0.37	0.53	0.63	0.63	2.70	2.71	3.17	3.17	0.99	1.44	2.00	2.00	0.00	0.00	0.56	38.99
European Union	0.12	0.12	0.12	0.12	5.45	5.41	5.33	5.51	0.63	0.67	0.64	0.68	0.04	5.94	0.01	1.04
Others	5.32	5.37	5.37	5.36	0.99	1.02	1.03	1.02	5.26	5.46	5.51	5.45	-0.05	-0.94	0.00	-0.07

World and Selected Countries and Regions

Table 09 Rice Area, Yield, and Production
World and Selected Countries and Regions

Country / Region	Area (Million hectares)				Yield (Metric tons per hectare)				Production (Million metric tons)				Change in Production			
	Prel.		2018/19 Proj.		Prel.		2018/19 Proj.		Prel.		2018/19 Proj.		From last month		From last year	
	2016/17	2017/18	Jul	Aug	2016/17	2017/18	Jul	Aug	2016/17	2017/18	Jul	Aug	MMT	Percent	MMT	Percent
World	161.48	161.72	161.60	161.55	4.50	4.51	4.51	4.51	486.71	488.54	487.80	487.57	-0.23	-0.05	-0.98	-0.20
United States	1.25	0.96	1.13	1.13	8.11	8.41	8.52	8.43	7.12	5.66	6.76	6.70	-0.07	-1.01	1.04	18.31
Total Foreign	160.23	160.76	160.47	160.42	4.47	4.49	4.48	4.48	479.60	482.88	481.04	480.87	-0.17	-0.03	-2.01	-0.42
East Asia																
China	30.18	30.18	29.50	29.50	6.86	6.91	6.89	6.89	144.95	145.99	142.20	142.20	0.00	0.00	-3.79	-2.60
Japan	1.57	1.56	1.56	1.56	6.81	6.69	6.69	6.69	7.78	7.59	7.60	7.60	0.00	0.00	0.01	0.18
Korea, South	0.78	0.76	0.71	0.71	7.18	7.01	7.05	7.05	4.20	3.97	3.73	3.73	0.00	0.00	-0.24	-6.09
Korea, North	0.47	0.48	0.50	0.50	5.49	5.09	4.92	4.92	1.67	1.57	1.60	1.60	0.00	0.00	0.03	1.72
South Asia																
India	43.99	43.92	43.50	43.50	3.74	3.76	3.76	3.76	109.70	110.00	109.00	109.00	0.00	0.00	-1.00	-0.91
Bangladesh	11.75	11.27	11.77	11.77	4.42	4.35	4.42	4.42	34.58	32.65	34.70	34.70	0.00	0.00	2.05	6.28
Pakistan	2.72	2.80	2.80	2.80	3.77	4.02	3.96	3.96	6.85	7.50	7.40	7.40	0.00	0.00	-0.10	-1.33
Nepal	1.50	1.49	1.50	1.50	3.48	3.34	3.33	3.33	3.48	3.31	3.33	3.33	0.00	0.00	0.02	0.60
Sri Lanka	0.68	0.88	0.90	0.90	4.35	4.22	4.30	4.30	2.00	2.51	2.63	2.63	0.00	0.00	0.12	4.78
Southeast Asia																
Indonesia	12.24	12.25	12.24	12.24	4.78	4.76	4.80	4.80	36.86	37.00	37.30	37.30	0.00	0.00	0.30	0.81
Vietnam	7.71	7.76	7.76	7.76	5.68	5.97	5.99	5.99	27.40	28.94	29.07	29.07	0.00	0.00	0.13	0.44
Thailand	10.25	10.68	11.14	11.14	2.84	2.89	2.88	2.88	19.20	20.37	21.20	21.20	0.00	0.00	0.83	4.07
Burma	7.03	7.10	7.15	7.15	2.81	2.90	2.93	2.93	12.65	13.20	13.40	13.40	0.00	0.00	0.20	1.52
Philippines	4.72	4.86	4.86	4.86	3.93	4.02	4.04	4.04	11.69	12.30	12.35	12.35	0.00	0.00	0.05	0.41
Cambodia	3.10	3.18	3.25	3.25	2.78	2.78	2.78	2.78	5.26	5.40	5.50	5.50	0.00	0.00	0.10	1.87
Laos	0.97	0.98	0.99	0.99	3.19	3.24	3.30	3.30	1.95	2.00	2.05	2.05	0.00	0.00	0.05	2.50
Malaysia	0.70	0.70	0.70	0.70	4.03	4.03	4.03	4.03	1.82	1.82	1.82	1.82	0.00	0.00	0.00	0.00
South America																
Brazil	1.98	1.96	1.96	1.96	6.22	6.06	6.02	6.02	8.38	8.08	8.02	8.02	0.00	0.00	-0.05	-0.63
Peru	0.42	0.44	0.43	0.43	7.54	7.06	7.35	7.35	2.19	2.12	2.18	2.18	0.00	0.00	0.06	2.83
Africa																
Egypt	0.85	0.76	0.59	0.59	8.18	8.18	8.13	8.13	4.80	4.30	3.30	3.30	0.00	0.00	-1.00	-23.26
Madagascar	1.48	1.43	1.45	1.43	2.59	2.18	2.62	2.53	2.44	1.98	2.43	2.30	-0.13	-5.26	0.32	16.13
Nigeria	3.00	3.20	3.20	3.20	2.00	1.88	1.88	1.88	3.78	3.78	3.78	3.78	0.00	0.00	0.00	0.00
European Union	0.44	0.43	0.42	0.42	6.80	6.81	6.89	6.89	2.08	2.04	2.00	2.00	0.00	0.00	-0.03	-1.62
Iran	0.63	0.63	0.63	0.63	4.03	4.16	4.12	4.12	1.66	1.72	1.70	1.70	0.00	0.00	-0.02	-0.93
Others	11.09	11.10	10.99	10.96	3.05	3.11	3.15	3.15	22.24	22.75	22.74	22.70	-0.04	-0.16	-0.05	-0.21

Yield is on a rough basis, before the milling process. Production is on a milled basis, after the milling process.

Table 10 Total Oilseed Area, Yield, and Production

World and Selected Countries and Regions

Country / Region	Area (Million hectares)				Yield (Metric tons per hectare)				Production (Million metric tons)				Change in Production						
	2016/17	Prel.		2018/19 Proj.		2016/17	Prel.		2018/19 Proj.		2016/17	Prel.		2018/19 Proj.		From last month		From last year	
		2017/18	Jul	Aug	2017/18		Jul	Aug	2017/18	Jul		Aug	MMT	Percent	MMT	Percent			
World Total	--	--	--	--	--	--	--	--	--	574.23	573.40	592.59	603.12	10.53	1.78	29.72	5.18		
Total Foreign	--	--	--	--	--	--	--	--	--	447.29	442.37	464.76	467.57	2.81	0.61	25.20	5.70		
Oilseed, Copra	--	--	--	--	--	--	--	--	--	5.51	5.73	5.83	5.83	0.00	0.00	0.10	1.66		
Oilseed, Palm Kernel	--	--	--	--	--	--	--	--	--	17.36	18.45	19.21	19.21	0.00	0.00	0.76	4.14		
Major Oilseeds	234.37	244.53	250.88	251.14	2.35	2.25	2.26	2.30	551.35	549.22	567.55	578.08	10.53	1.86	28.86	5.26			
United States	39.25	42.80	42.19	42.04	3.23	3.06	3.03	3.22	126.94	131.03	127.83	135.55	7.72	6.04	4.52	3.45			
Foreign Oilseeds	195.12	201.73	208.69	209.10	2.18	2.07	2.11	2.12	424.42	418.19	439.72	442.53	2.81	0.64	24.34	5.82			
South America	60.88	62.10	66.94	67.03	3.19	2.90	3.02	3.02	193.96	179.79	202.39	202.50	0.11	0.05	22.72	12.64			
Brazil	35.03	36.53	39.04	39.05	3.35	3.37	3.18	3.18	117.47	123.16	124.28	124.29	0.02	0.01	1.13	0.91			
Argentina	19.81	19.20	21.40	21.47	3.04	2.17	2.89	2.89	60.17	41.63	61.91	61.99	0.08	0.13	20.36	48.91			
Paraguay	3.47	3.53	3.57	3.58	2.97	2.86	2.77	2.77	10.31	10.09	9.91	9.92	0.01	0.10	-0.17	-1.67			
Bolivia	1.28	1.53	1.52	1.52	1.74	1.77	1.83	1.83	2.22	2.71	2.78	2.78	0.00	0.00	0.08	2.77			
Uruguay	1.14	1.15	1.26	1.26	2.98	1.55	2.46	2.46	3.41	1.78	3.09	3.09	0.00	0.00	1.31	73.79			
China	23.31	24.60	24.80	24.80	2.42	2.45	2.44	2.44	56.53	60.32	60.45	60.45	0.00	0.00	0.13	0.22			
South Asia	36.95	37.35	38.99	38.99	1.10	1.01	1.04	1.04	40.65	37.71	40.45	40.45	0.00	0.00	2.73	7.25			
India	33.82	33.98	35.53	35.53	1.08	0.98	1.01	1.01	36.52	33.29	35.84	35.84	0.00	0.00	2.55	7.65			
Pakistan	2.78	3.01	3.10	3.10	1.34	1.33	1.35	1.35	3.71	4.01	4.19	4.19	0.00	0.00	0.19	4.67			
European Union	11.79	12.36	12.26	12.42	2.71	2.83	2.66	2.59	31.96	34.98	32.55	32.17	-0.38	-1.15	-2.81	-8.04			
Former Soviet Union - 12	22.54	23.96	25.13	25.28	1.77	1.68	1.62	1.72	39.91	40.33	40.83	43.47	2.64	6.46	3.13	7.77			
Russia	10.20	10.66	11.75	11.75	1.47	1.45	1.35	1.42	14.99	15.48	15.90	16.70	0.80	5.03	1.22	7.88			
Ukraine	8.71	9.17	9.20	9.35	2.38	2.16	2.16	2.33	20.74	19.81	19.90	21.80	1.90	9.55	1.99	10.06			
Uzbekistan	1.18	1.25	1.20	1.20	1.19	1.12	1.13	1.00	1.40	1.40	1.35	1.20	-0.15	-11.11	-0.20	-14.29			
Canada	10.52	12.19	11.68	11.68	2.49	2.43	2.44	2.44	26.25	29.56	28.46	28.46	0.00	0.00	-1.10	-3.73			
Africa	19.73	19.64	19.60	19.60	0.93	0.96	0.95	0.95	18.40	18.95	18.59	18.59	0.00	0.00	-0.36	-1.90			
Nigeria	3.57	3.61	3.61	3.61	1.04	1.08	1.08	1.08	3.72	3.90	3.90	3.90	0.00	0.00	0.00	0.00			
South Africa	1.29	1.49	1.59	1.59	1.82	1.68	1.57	1.57	2.35	2.50	2.50	2.50	0.00	0.00	0.01	0.36			
Tanzania	1.40	1.35	1.50	1.50	0.85	0.89	0.85	0.85	1.19	1.20	1.28	1.28	0.00	0.00	0.07	6.16			
Southeast Asia	3.26	3.22	3.19	3.19	1.41	1.40	1.40	1.40	4.59	4.52	4.47	4.47	0.00	0.00	-0.06	-1.22			
Indonesia	1.03	1.00	0.98	0.98	1.64	1.61	1.61	1.61	1.69	1.62	1.58	1.58	0.00	0.00	-0.04	-2.16			
Burma	1.88	1.88	1.88	1.88	1.18	1.19	1.18	1.18	2.21	2.24	2.22	2.22	0.00	0.00	-0.02	-0.67			
Australia	3.32	3.30	2.96	2.96	1.70	1.60	1.49	1.49	5.66	5.28	4.40	4.40	0.00	0.00	-0.88	-16.70			
Turkey	1.11	1.25	1.34	1.34	2.49	2.53	2.48	2.68	2.76	3.17	3.31	3.58	0.27	8.06	0.42	13.14			
Others	1.71	1.76	1.82	1.82	2.19	2.03	2.10	2.20	3.76	3.58	3.83	4.01	0.18	4.57	0.43	11.87			

World Total and Total Foreign: (Major Oilseeds plus copra and palm kernel) Major Oilseeds: (soybeans, sunflowerseeds, peanuts(inshell), cottonseed and rapeseed)

Table 11 Soybean Area, Yield, and Production

Country / Region	Area (Million hectares)				Yield (Metric tons per hectare)				Production (Million metric tons)				Change in Production			
	2016/17	Prel.	2018/19 Proj.		2016/17	Prel.	2018/19 Proj.		2016/17	Prel.	2018/19 Proj.		From last month		From last year	
		2017/18	Jul	Aug		2017/18	Jul	Aug		2017/18	Jul	Aug	MMT	Percent	MMT	Percent
World	119.09	124.29	130.08	130.08	2.92	2.71	2.76	2.82	348.12	336.70	359.49	367.10	7.61	2.12	30.40	9.03
United States	33.47	36.23	35.96	35.96	3.49	3.30	3.26	3.47	116.92	119.52	117.30	124.81	7.51	6.40	5.29	4.43
Total Foreign	85.63	88.07	94.12	94.12	2.70	2.47	2.57	2.57	231.20	217.19	242.19	242.30	0.10	0.04	25.11	11.56
South America																
Brazil	33.90	35.10	37.50	37.50	3.38	3.40	3.21	3.21	114.60	119.50	120.50	120.50	0.00	0.00	1.00	0.84
Argentina	17.40	16.80	19.00	19.00	3.16	2.20	3.00	3.00	55.00	37.00	57.00	57.00	0.00	0.00	20.00	54.05
Paraguay	3.40	3.46	3.50	3.50	3.00	2.89	2.80	2.80	10.20	10.00	9.80	9.80	0.00	0.00	-0.20	-2.00
Bolivia	1.13	1.40	1.40	1.40	1.86	1.86	1.93	1.93	2.11	2.60	2.70	2.70	0.00	0.00	0.10	3.85
Uruguay	1.10	1.10	1.20	1.20	3.04	1.55	2.50	2.50	3.34	1.70	3.00	3.00	0.00	0.00	1.30	76.47
East Asia																
China	7.20	7.85	8.10	8.10	1.79	1.81	1.79	1.79	12.90	14.20	14.50	14.50	0.00	0.00	0.30	2.11
Korea, South	0.05	0.05	0.06	0.06	1.53	1.87	1.75	1.75	0.08	0.09	0.10	0.10	0.00	0.00	0.01	16.28
Korea, North	0.18	0.15	0.15	0.15	1.61	1.49	1.50	1.50	0.28	0.22	0.23	0.23	0.00	0.00	0.00	0.90
Japan	0.15	0.15	0.15	0.15	1.59	1.66	1.74	1.74	0.24	0.25	0.26	0.26	0.00	0.00	0.02	6.02
India	11.18	10.40	11.50	11.50	0.98	0.80	0.94	0.94	10.99	8.35	10.80	10.80	0.00	0.00	2.45	29.34
Canada	2.23	2.90	2.55	2.55	2.96	2.76	2.86	2.86	6.60	8.00	7.30	7.30	0.00	0.00	-0.70	-8.75
Former Soviet Union - 12																
Russia	2.12	2.57	2.85	2.85	1.48	1.41	1.37	1.37	3.13	3.62	3.90	3.90	0.00	0.00	0.28	7.71
Ukraine	1.86	1.98	1.85	1.85	2.31	1.97	2.27	2.27	4.29	3.89	4.20	4.20	0.00	0.00	0.31	7.97
European Union	0.80	0.93	0.95	0.95	3.00	2.88	2.89	2.92	2.41	2.67	2.75	2.78	0.03	0.91	0.11	4.05
Southeast Asia																
Indonesia	0.43	0.42	0.41	0.41	1.31	1.29	1.27	1.27	0.57	0.54	0.52	0.52	0.00	0.00	-0.02	-3.70
Vietnam	0.07	0.06	0.06	0.06	1.48	1.50	1.50	1.50	0.10	0.09	0.09	0.09	0.00	0.00	0.00	0.00
Thailand	0.03	0.04	0.03	0.03	1.78	1.57	1.47	1.47	0.06	0.06	0.05	0.05	0.00	0.00	-0.01	-9.09
Burma	0.15	0.15	0.15	0.15	1.07	1.07	1.07	1.07	0.16	0.16	0.16	0.16	0.00	0.00	0.00	0.00
Serbia	0.19	0.20	0.22	0.22	3.51	2.30	2.50	2.84	0.65	0.46	0.55	0.63	0.08	13.64	0.17	35.87
Mexico	0.28	0.26	0.27	0.27	1.85	1.65	1.81	1.81	0.52	0.43	0.49	0.49	0.00	0.00	0.06	13.16
Africa																
South Africa	0.57	0.79	0.90	0.90	2.29	1.96	1.75	1.75	1.32	1.55	1.58	1.58	0.00	0.00	0.03	1.61
Nigeria	0.61	0.64	0.64	0.64	0.96	0.94	0.94	0.94	0.59	0.60	0.60	0.60	0.00	0.00	0.00	0.00
Zambia	0.14	0.23	0.23	0.23	1.94	1.56	1.33	1.33	0.27	0.35	0.30	0.30	0.00	0.00	-0.05	-14.53
Uganda	0.05	0.05	0.05	0.05	0.60	0.60	0.60	0.60	0.03	0.03	0.03	0.03	0.00	0.00	0.00	0.00
Middle East																
Iran	0.06	0.07	0.07	0.07	2.25	2.29	2.29	2.29	0.14	0.16	0.16	0.16	0.00	0.00	0.00	0.00
Turkey	0.03	0.02	0.03	0.03	3.33	3.75	3.65	3.81	0.10	0.09	0.10	0.10	0.00	4.21	0.01	10.00
Others	0.31	0.31	0.30	0.30	1.73	1.86	1.77	1.77	0.53	0.58	0.53	0.53	0.00	0.00	-0.05	-8.10

World and Selected Countries and Regions

Table 12 Cottonseed Area, Yield, and Production

Country / Region	Area (Million hectares)				Yield (Metric tons per hectare)				Production (Million metric tons)				Change in Production			
	2016/17	Prel.	2018/19 Proj.		2016/17	Prel.	2018/19 Proj.		2016/17	Prel.	2018/19 Proj.		From last month		From last year	
		2017/18	Jul	Aug		2017/18	Jul	Aug		2017/18	Jul	Aug	MMT	Percent	MMT	Percent
World	29.07	32.76	32.19	32.12	1.34	1.37	1.37	1.38	39.09	45.04	44.15	44.37	0.22	0.50	-0.67	-1.49
United States	3.85	4.49	4.25	4.10	1.27	1.30	1.24	1.33	4.87	5.83	5.26	5.46	0.20	3.80	-0.36	-6.25
Total Foreign	25.22	28.27	27.94	28.01	1.36	1.39	1.39	1.39	34.21	39.21	38.88	38.90	0.02	0.05	-0.31	-0.79
South Asia																
India	10.85	12.40	11.90	11.90	1.06	0.99	1.02	1.02	11.46	12.31	12.19	12.19	0.00	0.00	-0.13	-1.03
Pakistan	2.40	2.60	2.70	2.70	1.40	1.38	1.41	1.41	3.35	3.60	3.80	3.80	0.00	0.00	0.20	5.56
China	2.90	3.40	3.35	3.35	3.03	3.18	3.10	3.10	8.80	10.80	10.40	10.40	0.00	0.00	-0.40	-3.70
Former Soviet Union - 12																
Uzbekistan	1.18	1.25	1.20	1.20	1.19	1.12	1.13	1.00	1.40	1.40	1.35	1.20	-0.15	-11.11	-0.20	-14.29
Turkmenistan	0.55	0.55	0.55	0.55	0.95	1.10	1.14	1.14	0.52	0.60	0.62	0.62	0.00	0.00	0.02	3.00
Tajikistan	0.17	0.19	0.19	0.19	1.02	0.97	0.91	0.91	0.17	0.18	0.17	0.17	0.00	0.00	-0.01	-3.89
Kazakhstan	0.12	0.13	0.12	0.12	0.97	1.00	1.16	1.06	0.11	0.13	0.14	0.13	-0.01	-8.63	0.00	1.60
South America																
Brazil	0.94	1.19	1.30	1.30	2.44	2.52	2.39	2.39	2.30	3.00	3.11	3.11	0.00	0.00	0.11	3.60
Argentina	0.24	0.35	0.30	0.38	1.16	0.87	1.00	1.02	0.28	0.30	0.30	0.38	0.08	27.67	0.08	26.40
Middle East																
Turkey	0.40	0.47	0.52	0.52	2.63	2.77	2.69	2.88	1.05	1.30	1.40	1.50	0.10	7.14	0.20	15.38
Syria	0.04	0.03	0.03	0.03	2.00	2.17	2.12	2.12	0.08	0.07	0.05	0.05	0.00	0.00	-0.01	-18.46
Iran	0.10	0.09	0.09	0.09	0.98	0.96	1.06	1.06	0.10	0.08	0.09	0.09	0.00	0.00	0.01	9.76
Australia	0.58	0.53	0.43	0.43	2.16	2.83	2.56	2.56	1.25	1.50	1.10	1.10	0.00	0.00	-0.40	-26.67
European Union	0.27	0.30	0.31	0.31	1.53	1.67	1.62	1.62	0.42	0.49	0.50	0.50	0.00	0.00	0.00	0.81
Africa																
Burkina	0.70	0.85	0.75	0.75	0.52	0.42	0.52	0.52	0.36	0.36	0.39	0.39	0.00	0.00	0.03	7.80
Mali	0.66	0.73	0.74	0.74	0.54	0.52	0.52	0.52	0.35	0.38	0.39	0.39	0.00	0.00	0.01	1.57
Cameroon	0.23	0.23	0.23	0.23	1.04	1.11	1.11	1.11	0.24	0.25	0.25	0.25	0.00	0.00	0.00	0.00
Cote d'Ivoire	0.35	0.37	0.37	0.37	0.48	0.57	0.52	0.52	0.17	0.21	0.19	0.19	0.00	0.00	-0.02	-7.62
Benin	0.42	0.45	0.44	0.44	0.66	0.62	0.62	0.62	0.27	0.28	0.27	0.27	0.00	0.00	-0.01	-2.85
Tanzania	0.40	0.35	0.50	0.50	0.21	0.29	0.35	0.35	0.09	0.10	0.18	0.18	0.00	0.00	0.07	73.27
Egypt	0.06	0.09	0.13	0.13	0.95	1.00	1.02	1.02	0.05	0.09	0.13	0.13	0.00	0.00	0.04	40.66
Nigeria	0.28	0.27	0.27	0.27	0.36	0.38	0.38	0.38	0.10	0.10	0.10	0.10	0.00	0.00	0.00	0.00
Uganda	0.07	0.08	0.08	0.08	1.49	1.45	1.45	1.45	0.11	0.11	0.11	0.11	0.00	0.00	0.00	0.00
Zimbabwe	0.21	0.20	0.23	0.23	0.25	0.43	0.38	0.38	0.05	0.09	0.09	0.09	0.00	0.00	0.00	2.35
Sudan	0.10	0.12	0.12	0.12	1.93	2.03	2.13	2.13	0.19	0.24	0.26	0.26	0.00	0.00	0.01	5.35
Mexico	0.10	0.21	0.23	0.23	2.50	2.53	2.58	2.58	0.26	0.53	0.59	0.59	0.00	0.00	0.07	12.50
Burma	0.24	0.25	0.24	0.24	1.17	1.24	1.23	1.23	0.29	0.31	0.30	0.30	0.00	0.00	-0.02	-4.84
Others	0.70	0.63	0.65	0.65	0.59	0.63	0.66	0.66	0.42	0.40	0.43	0.43	0.00	0.00	0.03	7.52

World and Selected Countries and Regions

Table 13 Peanut Area, Yield, and Production

Country / Region	Area (Million hectares)				Yield (Metric tons per hectare)				Production (Million metric tons)				Change in Production			
	2016/17	Prel.	2018/19 Proj.		2016/17	Prel.	2018/19 Proj.		2016/17	Prel.	2018/19 Proj.		From last month		From last year	
		2017/18	Jul	Aug		2017/18	Jul	Aug		2017/18	Jul	Aug	MMT	Percent	MMT	Percent
World	26.71	26.15	26.03	26.03	1.68	1.74	1.71	1.71	44.86	45.45	44.57	44.58	0.01	0.02	-0.87	-1.91
United States	0.62	0.72	0.59	0.59	4.07	4.56	4.65	4.67	2.53	3.28	2.75	2.76	0.01	0.40	-0.52	-15.82
Total Foreign	26.09	25.43	25.44	25.44	1.62	1.66	1.64	1.64	42.33	42.17	41.82	41.82	0.00	0.00	-0.35	-0.83
China	4.73	4.90	5.00	5.00	3.66	3.63	3.62	3.62	17.29	17.80	18.10	18.10	0.00	0.00	0.30	1.69
Africa																
Nigeria	2.68	2.70	2.70	2.70	1.13	1.19	1.19	1.19	3.03	3.20	3.20	3.20	0.00	0.00	0.00	0.00
Sudan	2.32	1.80	1.80	1.80	0.79	0.78	0.78	0.78	1.83	1.40	1.40	1.40	0.00	0.00	0.00	0.00
Senegal	1.15	1.25	1.10	1.10	0.82	1.13	0.91	0.91	0.95	1.41	1.00	1.00	0.00	0.00	-0.41	-29.18
Cameroon	0.45	0.43	0.43	0.43	1.65	1.40	1.40	1.40	0.75	0.60	0.60	0.60	0.00	0.00	0.00	0.00
Ghana	0.34	0.34	0.34	0.34	1.24	1.31	1.31	1.31	0.42	0.44	0.44	0.44	0.00	0.00	0.00	0.00
Chad	0.97	0.95	0.95	0.95	1.07	1.05	1.05	1.05	1.04	1.00	1.00	1.00	0.00	0.00	0.00	0.00
Malawi	0.37	0.37	0.37	0.37	0.74	0.88	0.88	0.88	0.28	0.33	0.33	0.33	0.00	0.00	0.00	0.00
Congo (Kinshasa)	0.50	0.50	0.50	0.50	0.85	0.85	0.85	0.85	0.42	0.42	0.42	0.42	0.00	0.00	0.00	0.00
Niger	0.77	0.75	0.75	0.75	0.59	0.53	0.53	0.53	0.45	0.40	0.40	0.40	0.00	0.00	0.00	0.00
Mali	0.43	0.38	0.38	0.38	0.87	0.87	1.07	1.07	0.37	0.33	0.40	0.40	0.00	0.00	0.08	23.08
Uganda	0.43	0.43	0.43	0.43	0.71	0.71	0.71	0.71	0.30	0.30	0.30	0.30	0.00	0.00	0.00	0.00
Burkina	0.42	0.43	0.43	0.43	0.80	0.81	0.81	0.81	0.34	0.35	0.35	0.35	0.00	0.00	0.00	0.00
Guinea	0.27	0.30	0.30	0.30	1.39	1.20	1.20	1.20	0.38	0.36	0.36	0.36	0.00	0.00	0.00	0.00
Egypt	0.06	0.06	0.06	0.06	3.20	3.20	3.20	3.20	0.21	0.21	0.21	0.21	0.00	0.00	0.00	0.00
Central African Republic	0.11	0.10	0.10	0.10	1.21	1.50	1.50	1.50	0.14	0.15	0.15	0.15	0.00	0.00	0.00	0.00
South Africa	0.06	0.06	0.06	0.06	2.20	1.27	1.64	1.64	0.12	0.07	0.09	0.09	0.00	0.00	0.02	28.57
Mozambique	0.40	0.29	0.29	0.29	0.28	0.38	0.38	0.38	0.11	0.11	0.11	0.11	0.00	0.00	0.00	0.00
Cote d'Ivoire	0.08	0.08	0.08	0.08	1.35	1.38	1.38	1.38	0.11	0.11	0.11	0.11	0.00	0.00	0.00	0.00
Benin	0.16	0.15	0.15	0.15	0.86	0.93	0.93	0.93	0.14	0.14	0.14	0.14	0.00	0.00	0.00	0.00
South Asia																
India	5.34	5.00	5.20	5.20	1.25	1.30	1.15	1.15	6.70	6.50	6.00	6.00	0.00	0.00	-0.50	-7.69
Pakistan	0.09	0.09	0.10	0.10	0.90	0.94	0.95	0.95	0.09	0.09	0.09	0.09	0.00	0.00	0.00	2.27
Southeast Asia																
Indonesia	0.60	0.58	0.57	0.57	1.87	1.85	1.86	1.86	1.12	1.08	1.06	1.06	0.00	0.00	-0.02	-1.40
Burma	0.89	0.89	0.89	0.89	1.55	1.55	1.55	1.55	1.38	1.38	1.38	1.38	0.00	0.00	0.00	0.00
Vietnam	0.20	0.19	0.19	0.19	2.37	2.37	2.37	2.37	0.46	0.45	0.45	0.45	0.00	0.00	0.00	0.00
Thailand	0.02	0.02	0.02	0.02	1.67	1.67	1.67	1.67	0.04	0.04	0.04	0.04	0.00	0.00	0.00	0.00
South America																
Argentina	0.32	0.36	0.33	0.33	3.98	2.18	3.24	3.24	1.29	0.79	1.07	1.07	0.00	0.00	0.28	35.10
Brazil	0.13	0.14	0.15	0.15	3.61	3.69	3.50	3.50	0.47	0.51	0.53	0.53	0.00	0.00	0.01	2.34
Mexico	0.06	0.06	0.06	0.06	1.71	1.70	1.70	1.70	0.10	0.10	0.10	0.10	0.00	0.00	0.00	0.00
Others	1.75	1.84	1.74	1.74	1.16	1.15	1.16	1.16	2.04	2.13	2.02	2.02	0.00	0.00	-0.11	-5.18

Table 14 Sunflowerseed Area, Yield, and Production

Country / Region	Area (Million hectares)				Yield (Metric tons per hectare)				Production (Million metric tons)				Change in Production			
	2016/17	Prel.	2018/19 Proj.		2016/17	Prel.	2018/19 Proj.		2016/17	Prel.	2018/19 Proj.		From last month		From last year	
		2017/18	Jul	Aug		2017/18	Jul	Aug		2017/18	Jul	Aug	MMT	Percent	MMT	Percent
World	25.41	25.57	26.24	26.33	1.89	1.85	1.79	1.89	47.97	47.31	46.90	49.88	2.98	6.34	2.57	5.43
United States	0.62	0.54	0.57	0.57	1.94	1.81	1.76	1.76	1.20	0.98	1.00	1.00	0.00	0.00	0.02	1.83
Total Foreign	24.79	25.03	25.67	25.76	1.89	1.85	1.79	1.90	46.77	46.33	45.90	48.88	2.98	6.48	2.55	5.50
Former Soviet Union - 12																
Russia	7.18	7.15	7.50	7.50	1.51	1.45	1.40	1.47	10.86	10.36	10.50	11.00	0.50	4.76	0.64	6.16
Ukraine	6.40	6.40	6.50	6.50	2.38	2.14	2.08	2.31	15.20	13.70	13.50	15.00	1.50	11.11	1.30	9.49
Kazakhstan	0.81	0.88	0.93	0.93	0.94	1.02	1.08	1.08	0.76	0.90	1.00	1.00	0.00	0.00	0.10	10.74
European Union	4.13	4.31	4.25	4.33	2.08	2.25	2.14	2.24	8.60	9.68	9.10	9.70	0.60	6.59	0.02	0.22
South America																
Argentina	1.82	1.67	1.75	1.75	1.95	2.10	2.00	2.00	3.55	3.50	3.50	3.50	0.00	0.00	0.00	0.00
Uruguay	0.04	0.05	0.06	0.06	1.50	1.56	1.61	1.61	0.07	0.08	0.09	0.09	0.00	0.00	0.01	15.38
Bolivia	0.14	0.13	0.12	0.12	0.80	0.80	0.70	0.70	0.11	0.11	0.08	0.08	0.00	0.00	-0.03	-23.81
Brazil	0.06	0.10	0.09	0.10	1.65	1.54	1.56	1.55	0.10	0.15	0.14	0.16	0.02	10.71	0.01	4.03
Paraguay	0.03	0.03	0.03	0.03	1.60	1.66	1.69	1.69	0.05	0.05	0.05	0.05	0.00	0.00	0.00	1.89
China	1.15	1.25	1.25	1.25	2.59	2.50	2.60	2.60	2.99	3.12	3.25	3.25	0.00	0.00	0.13	4.17
South Asia																
India	0.38	0.33	0.43	0.43	0.72	0.84	0.81	0.81	0.28	0.28	0.35	0.35	0.00	0.00	0.07	26.35
Pakistan	0.07	0.08	0.07	0.07	1.07	1.13	1.07	1.07	0.08	0.09	0.08	0.08	0.00	0.00	-0.02	-16.67
Middle East																
Turkey	0.60	0.70	0.73	0.73	2.20	2.21	2.18	2.40	1.32	1.55	1.58	1.74	0.16	10.13	0.19	12.26
Iran	0.04	0.04	0.04	0.04	0.98	1.08	1.08	1.08	0.04	0.04	0.04	0.04	0.00	0.00	0.00	0.00
Israel	0.01	0.01	0.01	0.01	1.60	1.60	1.60	1.60	0.02	0.02	0.02	0.02	0.00	0.00	0.00	0.00
Africa																
Egypt	0.01	0.01	0.01	0.01	2.43	2.38	2.38	2.38	0.02	0.02	0.02	0.02	0.00	0.00	0.00	0.00
Morocco	0.02	0.02	0.02	0.02	1.29	1.29	1.29	1.29	0.03	0.03	0.03	0.03	0.00	0.00	0.00	0.00
South Africa	0.64	0.61	0.60	0.60	1.37	1.32	1.27	1.27	0.87	0.80	0.76	0.76	0.00	0.00	-0.04	-5.00
Burma	0.60	0.60	0.60	0.60	0.65	0.65	0.65	0.65	0.39	0.39	0.39	0.39	0.00	0.00	0.00	0.00
Canada	0.03	0.03	0.03	0.03	1.82	2.23	2.20	2.20	0.05	0.06	0.06	0.06	0.00	0.00	0.00	-5.17
Australia	0.03	0.02	0.03	0.03	1.14	1.82	1.13	1.13	0.03	0.03	0.03	0.03	0.00	0.00	0.00	9.68
Others	0.61	0.63	0.64	0.64	2.25	2.20	2.08	2.39	1.36	1.38	1.34	1.54	0.20	14.94	0.16	11.68

World and Selected Countries and Regions

Table 15 Rapeseed Area, Yield, and Production

Country / Region	Area (Million hectares)				Yield (Metric tons per hectare)				Production (Million metric tons)				Change in Production						
	2016/17	Prel.		2018/19 Proj.		2016/17	Prel.		2018/19 Proj.		2016/17	Prel.		2018/19 Proj.		From last month		From last year	
		2017/18	Jul	Aug	2017/18		Jul	Aug	2017/18	Jul		Aug	MMT	Percent	MMT	Percent			
World	34.08	35.75	36.34	36.59	2.09	2.09	1.99	1.97	71.33	74.71	72.44	72.15	-0.29	-0.40	-2.56	-3.43			
United States	0.69	0.81	0.82	0.82	2.04	1.75	1.86	1.86	1.41	1.42	1.52	1.52	0.00	0.00	0.09	6.60			
Total Foreign	33.39	34.94	35.53	35.77	2.09	2.10	2.00	1.97	69.92	73.29	70.92	70.63	-0.29	-0.40	-2.66	-3.63			
European Union	6.58	6.83	6.75	6.84	3.12	3.24	2.99	2.81	20.54	22.15	20.20	19.20	-1.00	-4.95	-2.95	-13.30			
Canada	8.26	9.26	9.10	9.10	2.37	2.32	2.32	2.32	19.60	21.50	21.10	21.10	0.00	0.00	-0.40	-1.86			
China	7.33	7.20	7.10	7.10	1.98	2.00	2.00	2.00	14.55	14.40	14.20	14.20	0.00	0.00	-0.20	-1.39			
South Asia																			
India	6.07	5.85	6.50	6.50	1.17	1.00	1.00	1.00	7.09	5.85	6.50	6.50	0.00	0.00	0.65	11.11			
Pakistan	0.21	0.24	0.23	0.23	0.95	0.96	0.98	0.98	0.20	0.23	0.23	0.23	0.00	0.00	0.00	0.00			
Bangladesh	0.25	0.25	0.25	0.25	0.92	0.92	0.92	0.92	0.23	0.23	0.23	0.23	0.00	0.00	0.00	0.00			
Former Soviet Union - 12																			
Russia	0.91	0.95	1.40	1.40	1.10	1.58	1.07	1.29	1.00	1.50	1.50	1.80	0.30	20.00	0.30	20.24			
Ukraine	0.45	0.79	0.85	1.00	2.78	2.80	2.59	2.60	1.25	2.22	2.20	2.60	0.40	18.18	0.38	17.28			
Belarus	0.21	0.33	0.35	0.35	1.24	1.81	1.57	1.57	0.26	0.60	0.55	0.55	0.00	0.00	-0.05	-8.79			
Kazakhstan	0.16	0.25	0.25	0.25	1.06	1.11	1.10	1.10	0.17	0.28	0.28	0.28	0.00	0.00	0.00	-1.43			
Australia	2.68	2.70	2.45	2.45	1.61	1.36	1.31	1.31	4.31	3.67	3.20	3.20	0.00	0.00	-0.47	-12.81			
South America																			
Chile	0.05	0.05	0.05	0.05	3.98	4.14	4.20	4.20	0.18	0.21	0.23	0.23	0.00	0.00	0.02	9.66			
Paraguay	0.03	0.03	0.03	0.04	2.00	1.00	1.67	1.50	0.05	0.03	0.05	0.06	0.01	20.00	0.03	100.00			
Switzerland	0.02	0.02	0.02	0.02	3.14	3.14	3.14	3.14	0.07	0.07	0.07	0.07	0.00	0.00	0.00	0.00			
Ethiopia	0.02	0.04	0.04	0.04	1.79	1.71	1.57	1.57	0.04	0.06	0.06	0.06	0.00	0.00	-0.01	-8.33			
Others	0.17	0.15	0.15	0.15	2.26	2.10	2.19	2.21	0.38	0.31	0.34	0.34	0.00	0.89	0.03	10.75			

World and Selected Countries and Regions

Table 16 Copra, Palm Kernel, and Palm Oil Production

Country / Region	Production (Million metric tons)				Change in Production			
	2016/17	Prel.	2018/19 Proj.		From last month		From last year	
		2017/18	Jul	Aug	MMT	Percent	MMT	Percent
Oilseed, Copra								
Philippines	2.30	2.60	2.70	2.70	0.00	0.00	0.10	3.85
Indonesia	1.58	1.45	1.42	1.42	0.00	0.00	-0.03	-2.07
India	0.72	0.75	0.75	0.75	0.00	0.00	0.00	0.00
Vietnam	0.26	0.28	0.29	0.29	0.00	0.00	0.00	0.00
Mexico	0.21	0.21	0.22	0.22	0.00	0.00	0.01	4.76
Papua New Guinea	0.10	0.10	0.10	0.10	0.00	0.00	0.00	0.00
Thailand	0.07	0.07	0.07	0.07	0.00	0.00	0.00	0.00
Sri Lanka	0.07	0.07	0.07	0.07	0.00	0.00	0.00	0.00
Solomon Islands	0.03	0.03	0.03	0.03	0.00	0.00	0.00	0.00
Vanuatu/New Hebrides	0.03	0.03	0.03	0.03	0.00	0.00	0.00	0.00
World	5.51	5.73	5.83	5.83	0.00	0.00	0.10	1.75
Oilseed, Palm Kernel								
Indonesia	9.50	10.20	10.60	10.60	0.00	0.00	0.40	3.92
Malaysia	4.78	4.98	5.30	5.30	0.00	0.00	0.33	6.64
Thailand	0.75	0.82	0.87	0.87	0.00	0.00	0.05	6.10
Nigeria	0.73	0.73	0.73	0.73	0.00	0.00	0.00	0.00
Colombia	0.24	0.34	0.32	0.32	0.00	0.00	-0.02	-5.88
Papua New Guinea	0.16	0.17	0.17	0.17	0.00	0.00	0.00	0.00
Guatemala	0.15	0.15	0.15	0.15	0.00	0.00	0.00	0.00
Honduras	0.14	0.14	0.14	0.14	0.00	0.00	0.00	0.00
Brazil	0.12	0.13	0.14	0.14	0.00	0.00	0.01	7.69
Ecuador	0.11	0.12	0.12	0.12	0.00	0.00	0.00	0.00
World	17.36	18.45	19.21	19.21	0.00	0.00	0.76	4.12
Oil, Palm								
Indonesia	36.00	38.50	40.50	40.50	0.00	0.00	2.00	5.19
Malaysia	18.86	20.00	21.00	21.00	0.00	0.00	1.00	5.00
Thailand	2.50	2.70	2.90	2.90	0.00	0.00	0.20	7.41
Colombia	1.15	1.63	1.53	1.53	0.00	0.00	-0.10	-6.13
Nigeria	0.97	0.97	0.97	0.97	0.00	0.00	0.00	0.00
Guatemala	0.74	0.74	0.74	0.74	0.00	0.00	0.00	0.00
Papua New Guinea	0.65	0.63	0.63	0.63	0.00	0.00	0.00	0.00
Ecuador	0.57	0.59	0.61	0.61	0.00	0.00	0.02	3.39
Honduras	0.62	0.58	0.58	0.58	0.00	0.00	0.00	0.00
Ghana	0.52	0.52	0.52	0.52	0.00	0.00	0.00	0.00
World	65.26	69.60	72.76	72.76	0.00	0.00	3.16	4.54

World and Selected Countries and Regions

Table 17 Cotton Area, Yield, and Production

Country / Region	Area (Million hectares)				Yield (Kilograms per hectare)				Production (Million 480 lb. bales)				Change in Production			
	2016/17	Prel.	2018/19 Proj.		2016/17	Prel.	2018/19 Proj.		2016/17	Prel.	2018/19 Proj.		From last month		From last year	
		2017/18	Jul	Aug		2017/18	Jul	Aug		2017/18	Jul	Aug	MBales	Percent	MBales	Percent
World	29.71	33.39	32.83	32.76	781	805	796	801	106.63	123.51	120.11	120.53	0.42	0.35	-2.98	-2.41
United States	3.85	4.49	4.25	4.10	972	1,014	947	1,021	17.17	20.92	18.50	19.24	0.74	3.97	-1.69	-8.07
Total Foreign	25.86	28.90	28.58	28.66	753	773	774	770	89.46	102.59	101.61	101.29	-0.32	-0.31	-1.29	-1.26
South Asia																
India	10.85	12.40	11.90	11.90	542	509	525	525	27.00	29.00	28.70	28.70	0.00	0.00	-0.30	-1.03
Pakistan	2.40	2.60	2.70	2.70	699	687	685	685	7.70	8.20	8.50	8.50	0.00	0.00	0.30	3.66
China	2.90	3.40	3.35	3.35	1,708	1,761	1,722	1,722	22.75	27.50	26.50	26.50	0.00	0.00	-1.00	-3.64
South America																
Brazil	0.94	1.19	1.30	1.30	1,626	1,683	1,591	1,591	7.02	9.20	9.50	9.50	0.00	0.00	0.30	3.26
Argentina	0.24	0.35	0.30	0.38	680	510	599	601	0.75	0.82	0.83	1.04	0.21	25.45	0.22	26.22
Paraguay	0.01	0.01	0.01	0.01	416	416	416	416	0.02	0.02	0.02	0.02	0.00	0.00	0.00	0.00
Africa																
Burkina	0.70	0.85	0.75	0.75	407	333	406	406	1.31	1.30	1.40	1.40	0.00	0.00	0.10	7.69
Mali	0.66	0.73	0.74	0.74	412	403	403	403	1.24	1.35	1.37	1.37	0.00	0.00	0.02	1.48
Cote d'Ivoire	0.35	0.37	0.37	0.37	394	467	427	427	0.63	0.79	0.73	0.73	0.00	0.00	-0.06	-7.64
Benin	0.42	0.45	0.44	0.44	433	423	421	421	0.83	0.88	0.85	0.85	0.00	0.00	-0.03	-2.86
Egypt	0.06	0.09	0.13	0.13	673	718	732	732	0.17	0.30	0.42	0.42	0.00	0.00	0.12	40.00
Cameroon	0.23	0.23	0.23	0.23	455	484	484	484	0.47	0.50	0.50	0.50	0.00	0.00	0.00	0.00
Tanzania	0.40	0.35	0.50	0.50	106	143	174	174	0.20	0.23	0.40	0.40	0.00	0.00	0.17	73.91
Nigeria	0.28	0.27	0.27	0.27	182	190	190	190	0.23	0.24	0.24	0.24	0.00	0.00	0.00	0.00
Zimbabwe	0.21	0.20	0.23	0.23	146	245	218	218	0.14	0.23	0.23	0.23	0.00	0.00	0.01	2.22
Ethiopia	0.08	0.06	0.07	0.07	550	635	586	586	0.21	0.18	0.18	0.18	0.00	0.00	0.00	0.00
Former Soviet Union - 12																
Uzbekistan	1.18	1.25	1.20	1.20	687	688	680	599	3.73	3.95	3.75	3.30	-0.45	-12.00	-0.65	-16.46
Turkmenistan	0.55	0.55	0.55	0.55	529	543	559	519	1.33	1.36	1.40	1.30	-0.10	-7.14	-0.06	-4.41
Tajikistan	0.17	0.19	0.19	0.19	567	671	607	607	0.43	0.57	0.53	0.53	0.00	0.00	-0.04	-7.02
Kazakhstan	0.12	0.13	0.12	0.12	568	505	499	454	0.30	0.29	0.28	0.25	-0.03	-9.09	-0.04	-13.79
Middle East																
Turkey	0.40	0.47	0.52	0.52	1,742	1,853	1,800	1,884	3.20	4.00	4.30	4.50	0.20	4.65	0.50	12.50
Syria	0.04	0.03	0.03	0.03	1,089	1,161	1,132	1,132	0.20	0.16	0.13	0.13	0.00	0.00	-0.03	-18.75
Iran	0.10	0.09	0.09	0.09	653	640	704	704	0.30	0.25	0.28	0.28	0.00	0.00	0.03	10.00
Australia	0.58	0.53	0.43	0.43	1,520	1,931	1,873	1,798	4.05	4.70	3.70	3.55	-0.15	-4.05	-1.15	-24.47
Mexico	0.10	0.21	0.23	0.23	1,602	1,621	1,657	1,657	0.77	1.56	1.75	1.75	0.00	0.00	0.19	12.47
Burma	0.24	0.25	0.24	0.24	634	634	635	635	0.71	0.73	0.70	0.70	0.00	0.00	-0.03	-3.45
Others	1.69	1.68	1.72	1.72	490	559	563	563	3.80	4.31	4.45	4.45	0.00	0.00	0.14	3.20

World and Selected Countries and Regions

TABLE 18

The table below presents a record of the August projection and the final Estimate. Using world wheat production as an example, the "root mean square error" means that chances are 2 out of 3 that the current forecast will not be above or below the final estimate by more than 2.3 percent. Chances are 9 out of 10 (90% confidence level) that the difference will not exceed 4 percent. The average difference between the August projection and the final estimate is 11.1 million tons, ranging from 0.2 million to 32.1 million tons. The August projection has been below the estimate 25 times and above 12 times.

RELIABILITY OF PRODUCTION PROJECTIONS 1/

COMMODITY AND REGION	Root mean square error	90 percent confidence interval	Difference between forecast and final estimate					
			Average	Smallest	Largest	Years		
						Below final	Above final	
	Percent		---Million metric tons---					
WHEAT								
World	2.3	4.0	11.1	0.2	32.1	25	12	
U.S.	2.3	4.0	1.1	0.0	4.2	15	22	
Foreign	2.6	4.4	10.9	0.6	31.1	25	12	
COARSE GRAINS 2/								
World	2.4	4.0	17.7	0.4	51.0	28	9	
U.S.	6.2	10.5	9.7	0.0	31.4	24	13	
Foreign	2.4	4.1	13.9	0.7	39.5	25	12	
RICE (Milled)								
World	2.3	4.0	6.4	0.1	24.4	24	13	
U.S.	5.3	9.1	0.3	0.0	0.6	19	18	
Foreign	2.4	4.0	6.4	0.4	24.7	25	12	
SOYBEANS								
World	4.8	8.1	7.4	0.3	26.7	22	15	
U.S.	6.2	10.5	3.4	0.0	11.1	21	15	
Foreign	7.7	13.1	6.9	1.1	26.4	19	18	
COTTON			---Million 480-lb. bales---					
World	5.1	8.6	3.5	0.0	13.2	21	15	
U.S.	7.6	12.9	1.0	0.0	3.9	19	17	
Foreign	19.3	32.7	4.6	0.2	21.3	22	15	
UNITED STATES			-----Million bushels-----					
CORN	6.7	11.3	363	1	1,079	23	14	
SORGHUM	8.1	13.7	33	1	108	20	17	
BARLEY	6.2	10.6	15	1	67	14	23	
OATS	9.6	16.3	14	1	57	7	30	

1/ Marketing years 1981/82 through 2016/17. Final for grains, soybeans and cotton is defined as the first November estimates following the marketing year for 1981/82 through 2016/17, and for 2017/18 last month's estimate.

2/ Includes corn, sorghum, barley, oats, rye, millet, and mixed grain

August 2018

Office of Global Analysis, FAS, USDA