



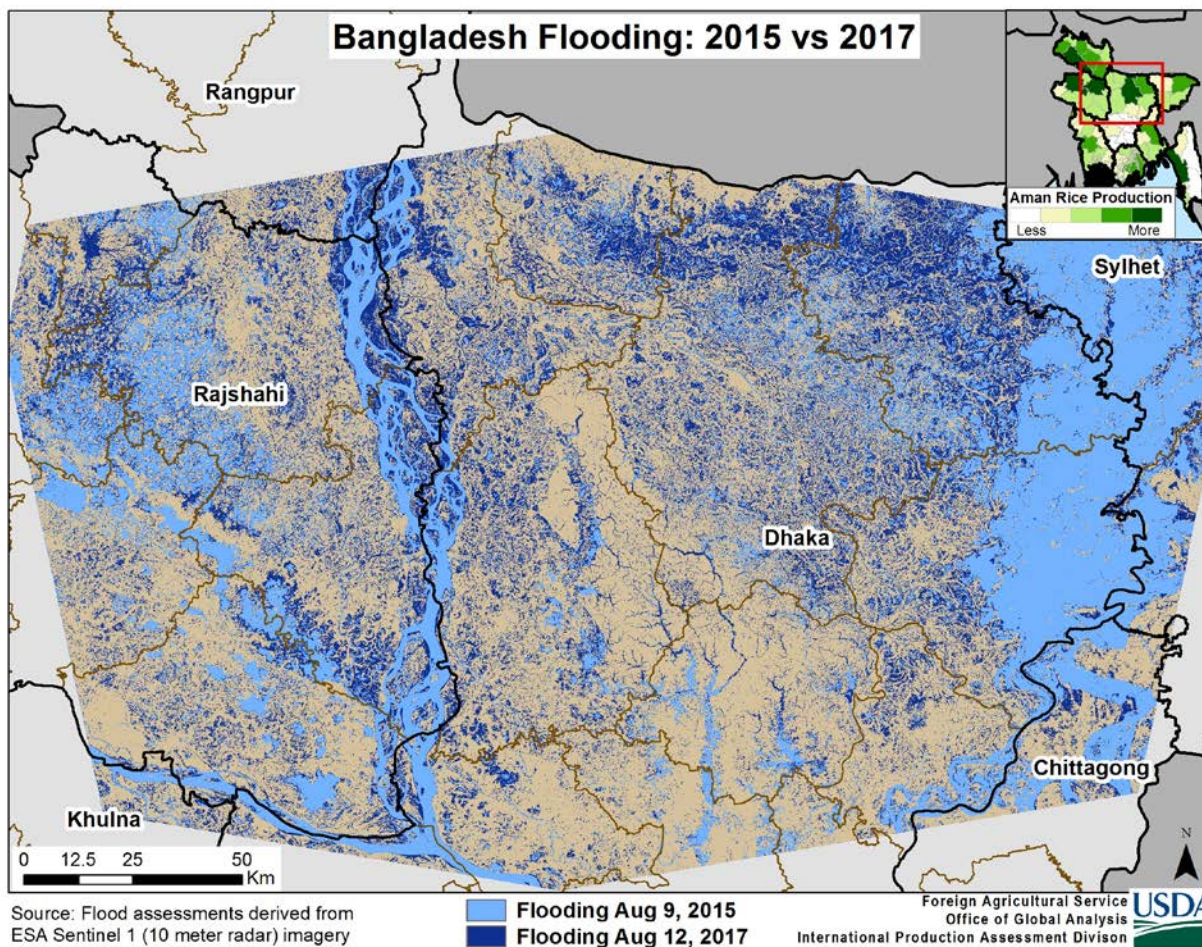
United States
Department of
Agriculture

Foreign
Agricultural
Service

Circular Series
WAP 10-17
October 2017

World Agricultural Production

Bangladesh Rice: Heavy Rains Continue to Decrease Production Estimates



USDA estimates 2017/18 Bangladesh rice production at 33.0 million metric tons (milled basis), down 1 percent from last month, and down 5 percent from last year. Yield is estimated at 4.38 metric tons per hectare, down slightly from last year. Harvested area is estimated at 11.3 million hectares, down nearly 2 percent from last month and down 4 percent from last year. The area decrease is attributed to monsoonal rains since June that caused flooding across the major rice areas of Dhaka and Rajshahi. The excessive rains impacted the *Aus* and *Aman* crops, which account for roughly 50 percent of the total rice crop. In 2015 excessive rains occurred as well, but earlier in August and in different areas of the country.

Approved by the World Agricultural Outlook Board

Heavy rains have persisted since May and cumulative rainfall is 78 percent higher than the long-term average for the country. The Bangladesh Department of Disaster reported that 600,000 hectares have been flooded in over 32 districts. They have also reported that several areas have been impacted by landslides in the major rice areas. Although the government has provided financial incentives to replant, farmers say it's too late to plant rice this season. The monsoon is beginning to retreat and is forecast to end in mid-October. Daily rainfall is beginning to return to the long-term normal.

Rice is grown throughout the year. The growing seasons are comprised of the *Boro* which is the largest crop that accounts for about 50 percent of production, followed by the *Aus* and *Aman* crop. (For more information, please contact Arnella.Trent@fas.usda.gov)

China Corn: Record Yield Estimated



Corn field, Shandong Province, China. September 2017



Photo Taken by Dath Mita

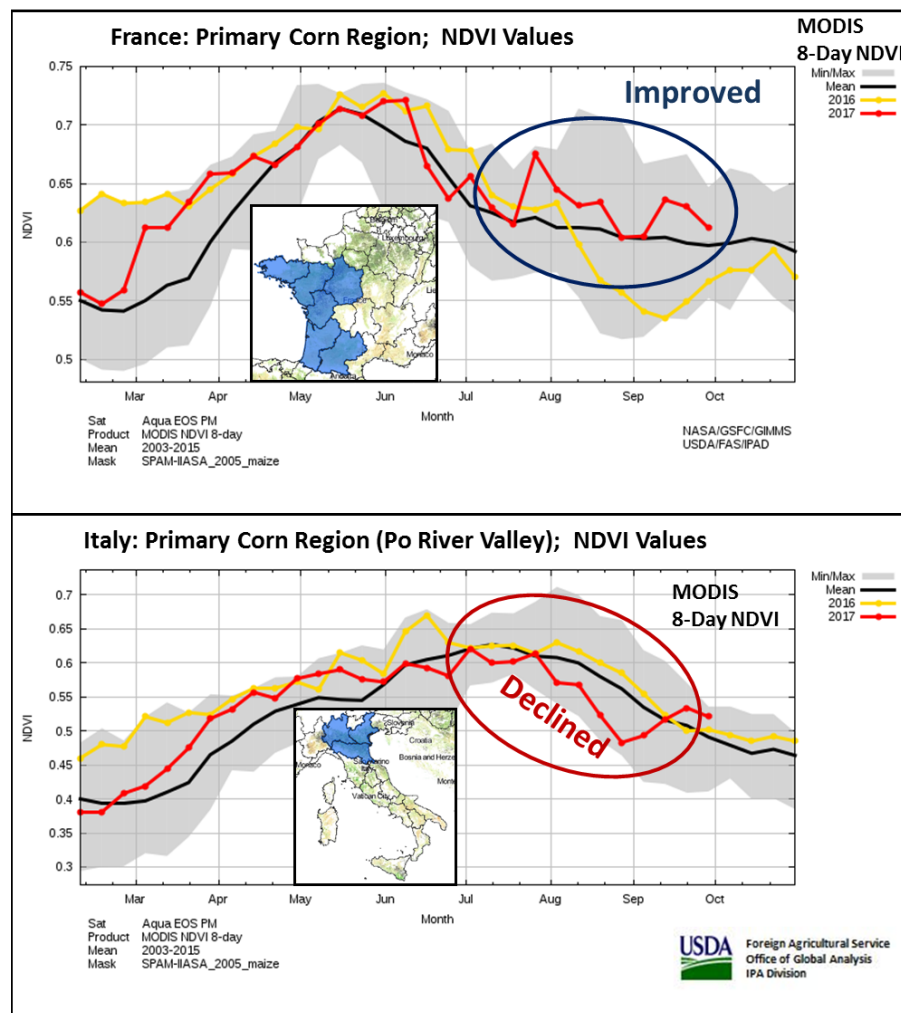
USDA estimates China's 2017/18 corn production at 215.0 million metric tons (mmt), unchanged from last month, down 4.55 mmt or 2 percent from last year. Projected area of 35 million hectares is unchanged from last month but down 5 percent from last year. Area has shown a downward trend in recent years, particularly in the Northeast, as reductions in government support for corn has increased profitability for alternative crops such as soybeans. Yield is forecast at a record 6.14 tons per hectare, unchanged from last month, and up 3 percent from last year.

Despite unseasonably warm and localized dry weather during April through June, satellite data indicated favorable soil moisture conditions across the major corn-producing provinces in northeast China and the North China Plain. Abnormally dry conditions may have slowed planting and early crop development in some regions including Henan (9 percent of total corn production), Liaoning (7 percent), Hebei (8 percent), Inner Mongolia (9 percent), as well as parts

of Jilin (13 percent), and Shandong (10 percent). Timely rainfall, however, during reproduction improved conditions and re-enforced record yield estimates.

In September, analysts from the USDA Foreign Agricultural Service conducted crop assessment travel in Liaoning, Shandong, and Anhui provinces when the crop was at physiological maturity and ready to be harvested. The crop conditions were favorable across the region with above-average yield expectations. Farmers indicated that harvest is expected to be completed by mid-October in time for wheat planting. Last year's poor corn prices resulted in a significant area shift from corn to soybean across the major corn regions. *(For more information, please contact Dath.Mita@fas.usda.gov)*

EU Corn: Offsetting Production Changes



Total corn production in the European Union (EU) is estimated at 59.4 million metric (mmt) tons, unchanged from last month, but 1.7 mmt or 3 percent down from last year and 7 percent down from the 5-year average. Yield remains unchanged from last month at 6.90 tons per hectare, down 3 percent from last year, but up 1 percent from the 5-year average. Area is unchanged at 8.6 million hectares, down slightly from last year and 0.8 million below the 5-year average.

Off-setting production changes were made to two of the top EU corn producers: France and Italy. The crop in France experienced beneficial

late-season weather, including favorable precipitation and moderate temperatures which boosted yield estimates. Due to these improved conditions, the production estimate for France was raised 0.4 mmt to 13.6 mmt. The harvest in France has recently just begun and was at 15 percent complete on October 2, according to the farm office FranceAgriMer. Meanwhile, the effects of high temperatures and dryness in central Europe during the summer months have further reduced yields in Italy. Production is estimated at 5.8 mmt, down 0.4 million from last month and 21

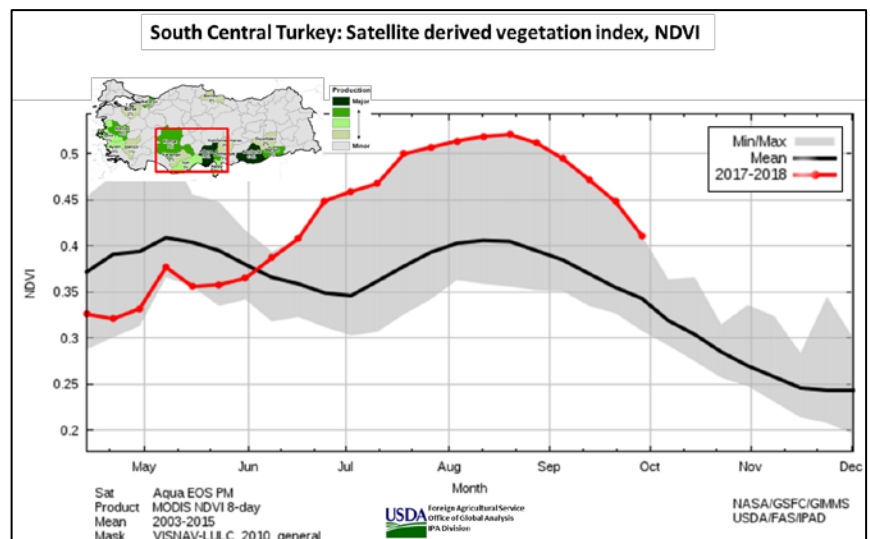
percent below the five-year average. Corn area in Italy has been declining for the past five-years as area is being replaced with soybeans.

The two other top corn producers within the EU are Romania and Hungary. The crop in Romania benefited from favorable rainfall in its main southern growing region and production continues to be estimated above average. Hungary has struggled with drought and heat and its production continues to be estimated below average. Production estimates remain unchanged this month in both countries at 10.0 mmt and 6.7 mmt, respectively. Without widespread irrigation they are highly dependent on rainfall and often have large production swings based on weather fluctuations. Other EU countries such as France, Italy, and Spain have significant irrigation networks, which mitigate adverse weather and typically provide more stable yields. *(For more information, please contact Bryan.Purcell@fas.usda.gov)*

Turkey Corn: Record Yield

USDA estimates Turkey corn production for 2017/18 at 6.0 million metric tons (mmt), up 0.5

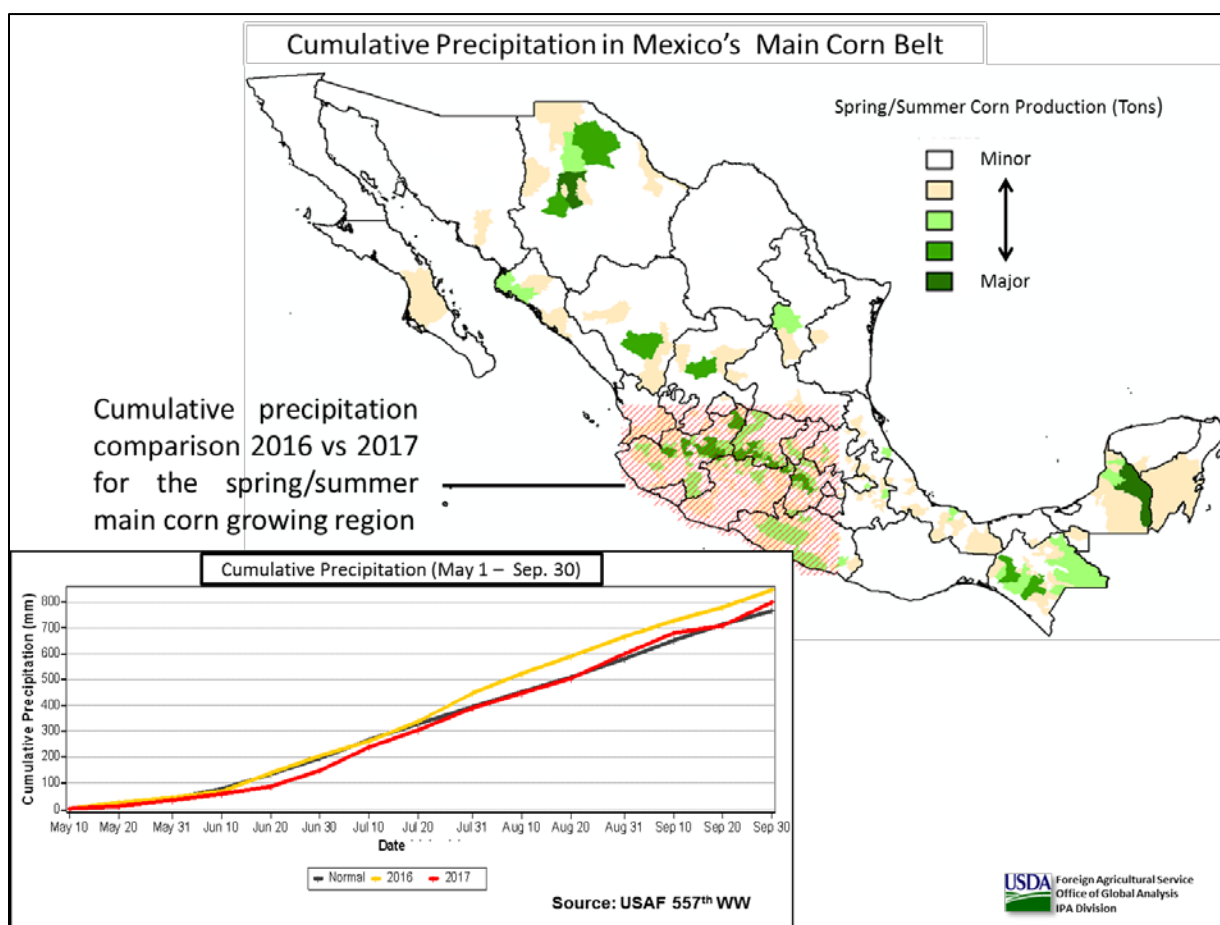
mmt or 9 percent from last month, now up 0.5 mmt or 9 percent from last year. The area is estimated at 0.6 million hectares (mha), up 0.1 mha from last month and last year. The yield forecast of 10.00 tons per hectare is at a record level. Precipitation has been very favorable during the planting and development months. Excellent spring rains led to rapid plant growth and a strong



satellite vegetation signal (normalized difference vegetation index, or NDVI), which is an indication of an abundant crop biomass. Similarly, satellite NDVI analysis suggests that high summer temperatures during tasseling have not been detrimental to crop growth. The corn crop this year is just below the record set in 2015/16 of 6.2 mmt. Harvest began in September and continues until the end of October. *(For more information, please contact William.Baker@fas.usda.gov)*

Mexico Corn: Estimated Production Increased

USDA estimates Mexico corn production for 2017/18 at 26.2 million metric tons, up about one percent from last month, but still down 5 percent from last year. Yield is estimated at 3.61 tons per hectare, down 2 percent from last year. Area harvested is estimated at 7.25 million hectares, up about one percent from last month, but down 3 percent from last year. The year-to-year decrease in area harvested is primarily due to farmers reverting back to planting sorghum. Last year more corn was planted due to the prevalence of the sugar cane aphid affecting sorghum.

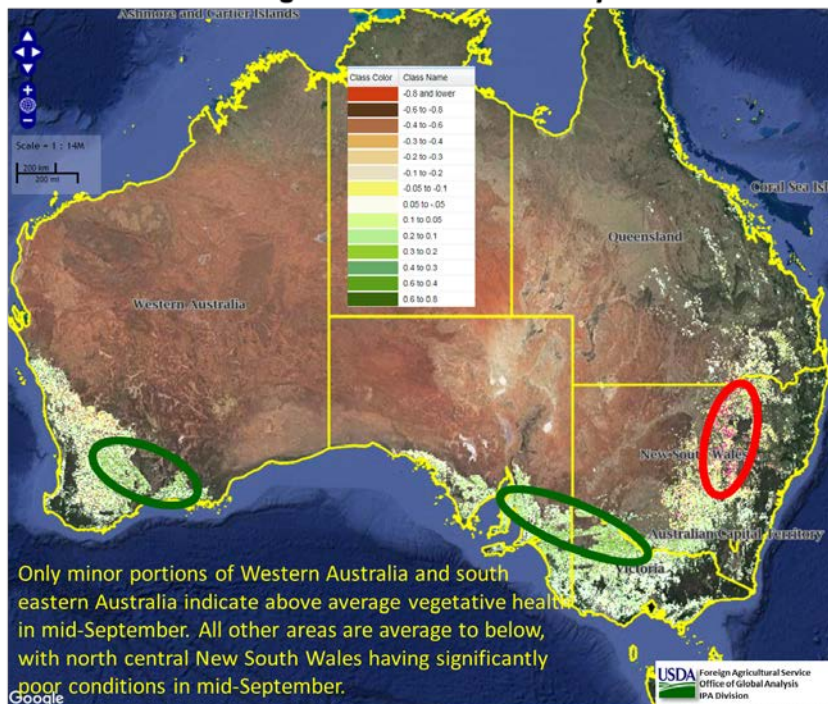


Mexico has two seasons for corn production: the spring/summer (main season) is planted in April through August and harvested in September through February. The fall/winter season is planted in October through February and harvested in March through July. Planting and crop establishment for the spring/summer cycle in the main corn-producing regions had beneficial rainfall. As the harvest began, the most recent harvest data from the Secretariat of Agriculture, Livestock, Rural Development, Fisheries and Food (SAGARPA) on August 30, 2017 indicate the abandonment rate is down approximately 50 percent from average (2012-2015). The reduction in the abandonment rate is attributed to the continued favorable rainfall throughout the 2017/18 growing season. Similar conditions were seen last year when the abandonment rate for corn was at its lowest in the past two decades. *(For more information, please contact Justin.Jenkins@fas.usda.gov)*

Australia Winter Crops: Lower Forecast for Wheat and Rapeseed Production

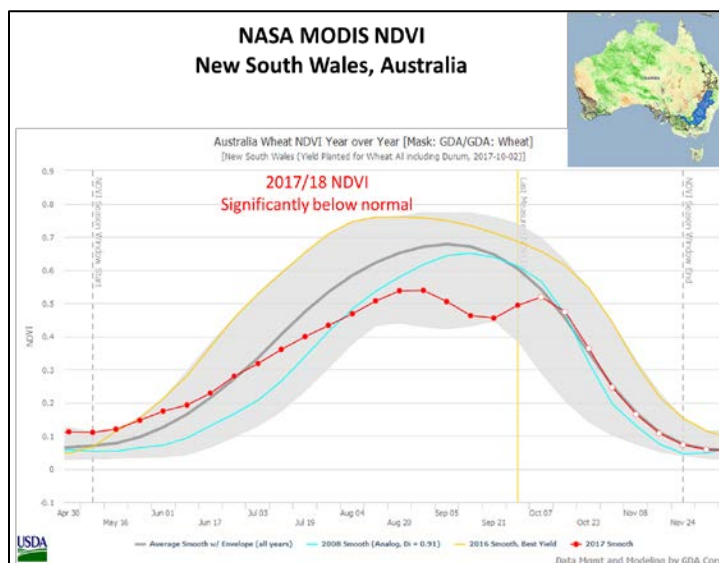
Australia's 2017/18 wheat production is estimated at 21.5 million metric tons (mmt), down 1.0 mmt or 4 percent from last month, and down 12.0 mmt or 36 percent from last year. Area is estimated at 12.5 million hectares (mha), unchanged from last month, up 0.1 million or 1 percent from last year. The yield estimate of 1.72 tons per hectare (t/ha) is the second lowest in the past ten seasons. The two lowest yields occurred in the severe drought years of 2002/03 and 2006/07.

NASA MODIS Vegetation Index Anomaly for Australia



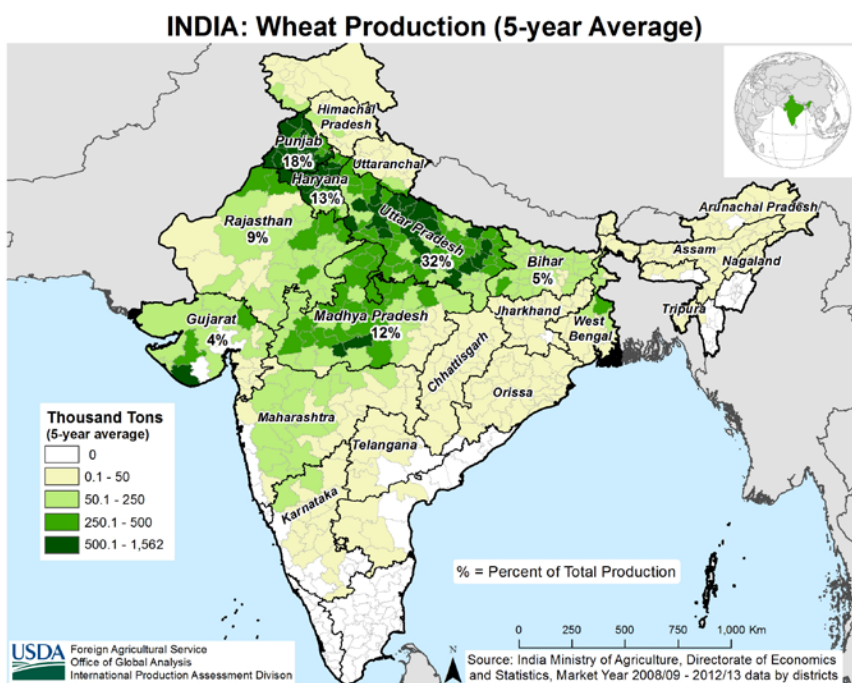
Australia's 2017/18 rapeseed production is estimated at 3.0 mmt, down 0.2 mmt or 6 percent from last month, and down 1.1 mmt or 27 percent from last year. Area is estimated at 2.6 mha, unchanged from last month, up 0.28 mha or 12 percent from last year. The yield forecast of 1.15 t/ha is the fourth lowest in the past ten seasons.

Persistent dryness and the current soil moisture deficit in major portions of Australia's winter crop region contributed to an estimated 17 percent drop in wheat yield and an 18 percent drop in rapeseed yield from the 5-year average. Precipitation has been well below average since major sowing operations commenced in May. Winter crops are sown in May and June. Harvest begins in November and is finished by the end of December.



Satellite-derived vegetation indices (the normalized difference vegetation index or NDVI) observed below-average conditions for Western Australia and New South Wales, which are major producing states. South Australia and Victoria, however, show near-average crop conditions as seen in the NDVI. (For more information, please contact James.Crutchfield@fas.usda.gov)

India Wheat: Production Estimated at a Record Level

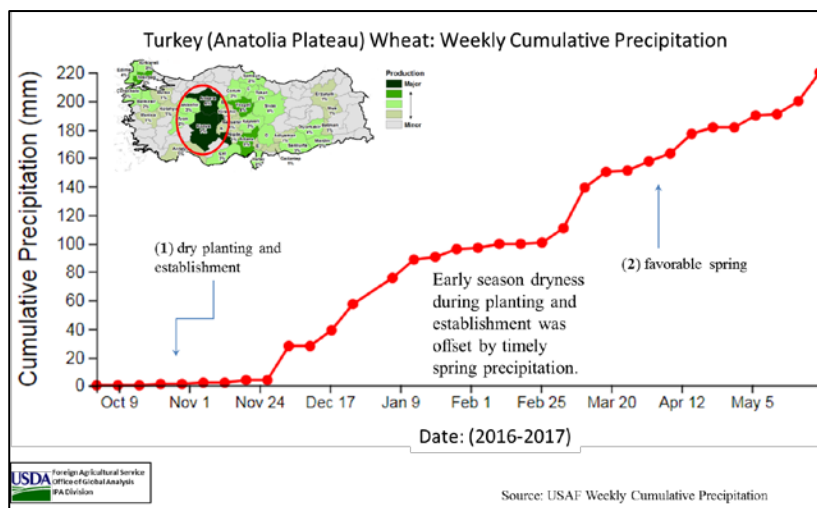


USDA estimates wheat production for 2017/18 at a record 98.4 million metric tons, up 13 percent from last year. Yield is estimated at a record level of 3.22 tons per hectare, up nearly 12 percent from last year. The increase is due to favorable weather, boosting yields in the main wheat producing areas. Harvested area is estimated at 30.6 million hectares, up slightly from last year. The increase in area is attributed to strong domestic prices resulting from tight domestic

supplies. (For more information, please contact Arnella.Trent@fas.usda.gov)

Turkey Wheat: Record Production and Yield

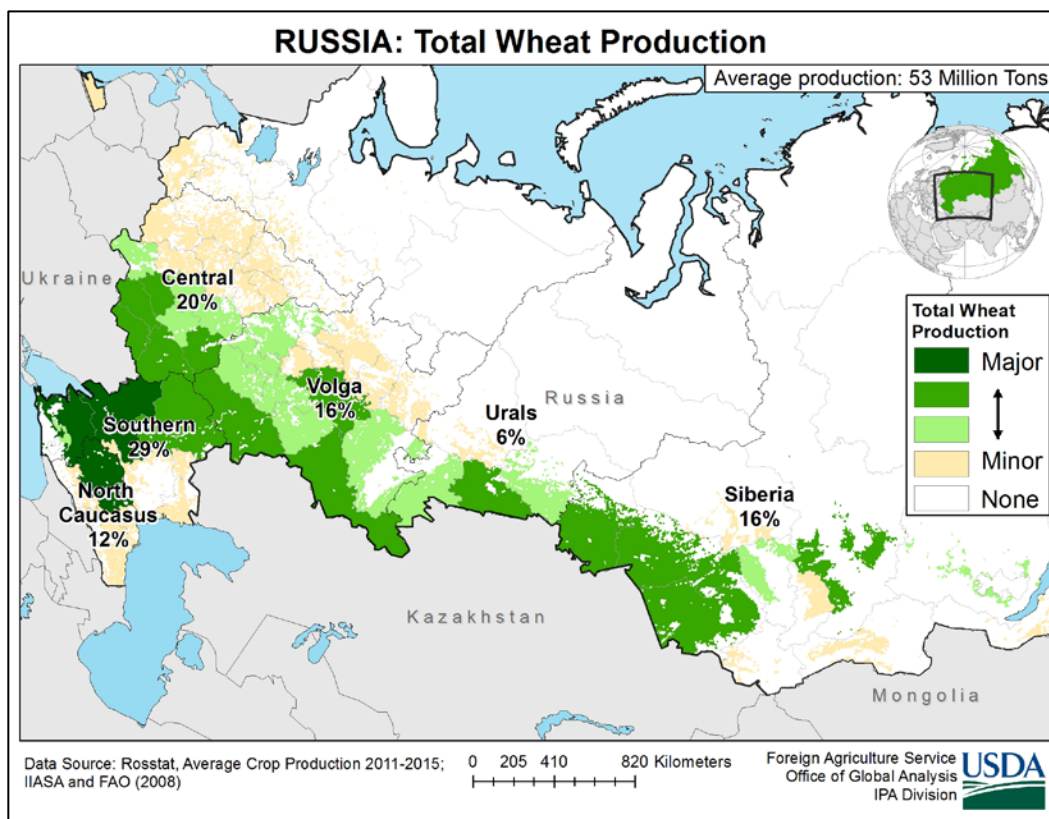
USDA estimates Turkey wheat production for 2017/18 at 21.0 million metric tons (mmt), up 1.0 mmt or 5 percent from last month, and up 3.8 mmt or 22 percent from last year. The area estimate is 7.8 million hectares, unchanged from last month, but down just slightly from last year. The yield estimate of 2.69 tons per hectare is a record. Turkey has had an exceptional year regarding wheat production considering the challenging crop conditions at planting and establishment. A dry planting window followed by cold temperatures led to an earlier-than-normal dormancy, negatively impacting crop establishment. Beneficial snow cover, however, protected the crop over the winter months and once dormancy broke, provided plentiful soil moisture. This was followed by frequent and favorable amounts of spring precipitation during tillering and maturation. Despite the poor establishment, the beneficial spring promoted record yields. Harvest is finished and while news



accounts are clear about a record crop, poor quality has been reported to be a problem. (For more information, please contact William.Baker@fas.usda.gov)

Russia Wheat: Harvest Reports Increase Record Production

USDA estimates Russia wheat production for 2017/18 at 82.0 million metric tons (mmt), up 1.0 mmt from last month and topping last year's record output by 9.5 mmt. Total wheat yield is estimated at 3.06 tons per hectare (t/ha), up about one percent from last month, and up 14 percent from last year's record. Winter wheat harvest is complete and spring wheat harvest is wrapping up and should be finished by the end of October.



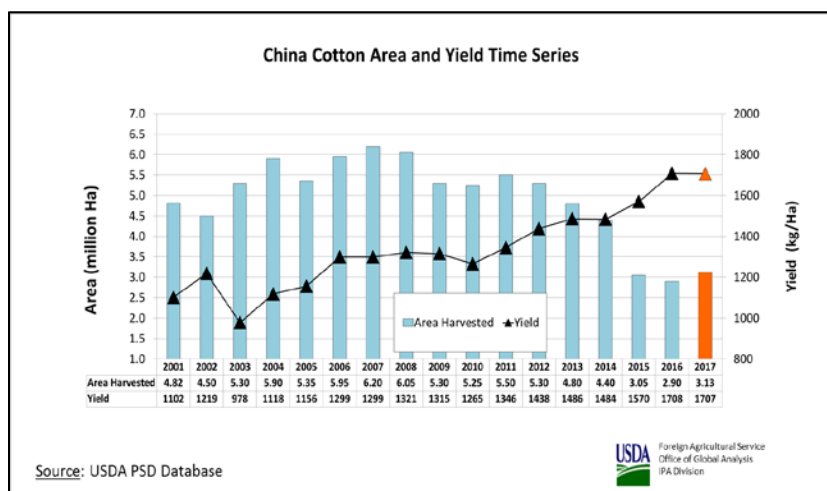
Updated harvest reports from the Ministry of Agriculture indicate higher yields than last year in the main three spring wheat growing regions (Urals, Volga and Siberia). In the Urals District, harvest is 93 percent complete and yield this year is currently at 2.02 t/ha as compared to last year's 1.71 t/ha. In Volga, which grows both spring and winter wheat, harvest for the spring crop is 95 percent complete and yield this year is currently at 2.51 t/ha as compared to last year's 2.01 t/ha. In Siberia, harvest is 84 percent complete and yield this year is currently at 1.66 t/ha as compared to last year's 1.64 t/ha. Satellite imagery throughout the season confirmed these outstanding conditions. The USDA production estimate excludes output of roughly 1.0 mmt from Crimea. (For more information, please contact Mark.Lindeman@fas.usda.gov)

China Cotton: Near Record Yield

China's 2017/18 cotton production is estimated at 24.5 million (480 lb.) bales (5.33 million metric tons), unchanged from last month, up 8 percent from last year. Area is still estimated at 3.13 million hectares, up 8 percent from last year. Yield is estimated at 1,707 kilograms per hectare (kg/ha), down slightly from last year's record of 1,708 kg/ha.

Cotton picking is in full progress under favorable weather conditions across Xinjiang province. According to the China Cotton Association, 20 percent of Xinjiang's crop had been harvested by the end of

September. In the eastern provinces of Shandong, Hebei, and Jiangsu nearly half of the crop has been harvested. Since the season began in April, most major cotton growing regions received normal to above-normal rainfall, resulting in favorable planting conditions, plant growth, and a promising finish to the season.



China cotton area increased slightly due to higher cotton prices. The area increased the most in Xinjiang and Hebei provinces. According to the National Cotton Monitoring Network (NCMN), Xinjiang province planted over 2 million hectares, increasing its cotton production to roughly 78 percent of the national total. This year's area increase is a change from the trend of the past five years. For the past five consecutive seasons, harvested area declined across all cotton regions as farmers responded to changes in agricultural policy. In 2014 the government announced and enacted policies regarding the removal of cotton support, or direct subsidies, to farmers in an effort to minimize high stockpiles of cotton. *(For more information, please contact Dath.Mita@fas.usda.gov)*



**World Agricultural Production
U.S. Department of Agriculture**

Foreign Agricultural Service / Office of Global Analysis
International Production Assessment Division (IPAD)
Ag Box 1051, Room 4630, South Building
Washington, DC 20250-1051

<http://www.pecad.fas.usda.gov/>

Telephone: (202) 720-1662 Fax: (202) 720-1158

This report uses information from the Foreign Agricultural Service’s (FAS) global network of agricultural attachés and counselors, official statistics of foreign governments and other foreign source materials, and the analysis of economic data and satellite imagery. Estimates of foreign area, yield, and production are from the International Production Assessment Division, FAS, and are reviewed by USDA’s Inter-Agency Commodity Estimates Committee. Estimates of U.S. area, yield, and production are from USDA’s National Agricultural Statistics Service. Numbers within the report may not add to totals because of rounding. This report reflects official USDA estimates released in the World Agricultural Supply and Demand Estimates (WASDE-570), October 12, 2017.

Printed copies are available from the National Technical Information Service. Download an order form at http://www.ntis.gov/products/specialty/usda/fas_a-g.asp, or call NTIS at 1-800-363-2068.

The FAS International Production Assessment Division prepared this report. The next issue of World Agricultural Production will be released after 12:00 p.m. Eastern Time, November 9, 2017.

Conversion Table

Metric tons to bushels

Wheat, soybeans	=	MT * 36.7437
Corn, sorghum, rye	=	MT * 39.36825
Barley	=	MT * 45.929625
Oats	=	MT * 68.894438

Metric tons to 480-lb bales

Cotton	=	MT * 4.592917
--------	---	---------------

Metric tons to hundredweight

Rice	=	MT * 22.04622
------	---	---------------

Area & weight

1 hectare	=	2.471044 acres
1 kilogram	=	2.204622 pounds



For further information, contact:
U.S. Department of Agriculture
Foreign Agricultural Service
Office of Global Analysis
International Production Assessment Division
Ag Box 1051, Room 4630, South Building
Washington, DC 20250-1051

Telephone: (202) 720-1662

Fax: (202) 720-1158

GENERAL INFORMATION

Director	Ronald Frantz	202-720-4056	ronald.frantz@fas.usda.gov
Deputy Director	Robert Tetrault	202-720-1071	robert.tetrault@fas.usda.gov
Administrative Assistant	Shelisa Johnson	202-720-1662	shelisa.johnson@fas.usda.gov
USDA Remote Sensing Advisor	Glenn Bethel	202-720-1280	glenn.bethel@fas.usda.gov
Sr. Analyst/Satellite Imagery Archives Manager/Technical Lead	Curt Reynolds, Ph.D.	202-690-0134	curt.reynolds@fas.usda.gov
Sr. Analyst/ Technical Lead	Dath Mita, Ph.D.	202-720-7339	dath.mita@fas.usda.gov
Sr. Analyst/ Global Special Projects Manager/Technical Lead	Jim Crutchfield	202-690-0135	james.crutchfield@fas.usda.gov
Sr. Analyst/Technical Lead	Vacant		
GIS Analyst/WAP Coordinator	Justin Jenkins	202-720-0419	justin.jenkins@fas.usda.gov

COUNTRY- AND REGION-SPECIFIC INFORMATION

South America, Argentina, Venezuela, and Colombia	Denise McWilliams, Ph.D.	202-720-0107	denise.mcwilliams@fas.usda.gov
Western and Central Europe, and North Africa	Bryan Purcell	202-690-0138	bryan.purcell@fas.usda.gov
Russia, Ukraine, Kazakhstan	Mark Lindeman	202-690-0143	mark.lindeman@fas.usda.gov
South Asia, Sri Lanka Bangladesh, India, and Nepal	Arnella Trent	202-720-0881	arnella.trent@fas.usda.gov
East Asia, China, and Japan	Dath Mita, Ph.D.	202-720-7339	dath.mita@fas.usda.gov
Sub-Saharan Africa, Nigeria and South Africa	Curt Reynolds, Ph.D.	202-690-0134	curt.reynolds@fas.usda.gov
S.E. Asia, Indonesia, Thailand, Malaysia, Cambodia and Vietnam	Michael Shean	202-720-7366	michael.shEAN@fas.usda.gov
Central America, Mexico, and Western United States	Justin Jenkins	202-720-0419	justin.jenkins@fas.usda.gov
Australia, New Zealand, Pakistan Papua New Guinea and South Pacific Islands	Jim Crutchfield	202-690-0135	james.crutchfield@fas.usda.gov
Middle East, Central Asia, Afghanistan Iraq, Iran, and Syria	Bill Baker, Ph.D.	202-260-8109	william.baker@fas.usda.gov
Canada, Caribbean, Eastern United States	Katie McGaughey	202-720-9210	katie.mcgaughey@fas.usda.gov
Brazil	Maria Anulacion	202-720-6878	maria.anulacion@fas.usda.gov



The Foreign Agricultural Service (FAS) updates its production, supply and distribution (PSD) database for cotton, oilseeds, and grains at 12:00 p.m. on the day the *World Agricultural Supply and Demand Estimates* (WASDE) report is released. This circular is released by 12:15 p.m.

FAS Reports and Databases:

Current *World Market and Trade and World Agricultural Production* Reports:

<http://apps.fas.usda.gov/psdonline/psdDataPublications.aspx>

Archives *World Market and Trade and World Agricultural Production* Reports:

<http://usda.mannlib.cornell.edu/MannUsda/viewTaxonomy.do?taxonomyID=7>

Production, Supply and Distribution Database (PSD Online):

<http://apps.fas.usda.gov/psdonline/psdHome.aspx>

EU Countries Area & Production Estimates

<http://apps.fas.usda.gov/psdonline/psdDownload.aspx>

Global Agricultural Trade System (U.S. Exports and Imports):

<http://apps.fas.usda.gov/gats/default.aspx>

Export Sales Report:

<http://apps.fas.usda.gov/esrquery/>

Global Agricultural Information Network (Agricultural Attaché Reports):

<http://gain.fas.usda.gov/Pages/Default.aspx>

Other USDA Reports:

World Agricultural Supply and Demand Estimates (WASDE):

<http://www.usda.gov/oce/commodity/wasde/>

Economic Research Service:

<http://www.ers.usda.gov/topics/crops>

National Agricultural Statistics Service:

<http://www.nass.usda.gov/Publications/>

Table 01 World Crop Production Summary

Million Metric Tons

Commodity	World -	Total Foreign	North America			Former Soviet		European	Asia (WAP)					South America		Selected Other			All Others
			United States	Canada -	Mexico -	Russia -	Ukraine -		China -	India -	Indonesia	Pakistan	Thailand	Argentina	Brazil -	Australia	South Africa	Turkey -	
---Million metric tons---																			
Wheat																			
2015/16	735.3	679.1	56.1	27.6	3.8	61.0	27.3	nr	130.2	86.5	0.0	25.1	0.0	11.3	5.5	22.3	1.4	19.5	257.6
2016/17 prel.	754.1	691.3	62.8	31.7	3.9	72.5	26.8	nr	128.9	87.0	0.0	25.6	0.0	18.4	6.7	33.5	1.9	17.3	237.2
2017/18 proj.																			
Sep	744.8	697.5	47.3	26.5	3.7	81.0	26.5	nr	130.0	96.0	0.0	26.2	0.0	17.5	5.2	22.5	1.6	20.0	240.9
Oct	751.2	703.8	47.4	27.0	3.6	82.0	26.5	nr	130.0	98.4	0.0	26.2	0.0	17.5	5.1	21.5	1.7	21.0	243.4
Coarse Grains																			
2015/16	1,259.6	892.6	367.0	25.6	32.4	37.4	33.4	nr	231.4	38.7	10.5	5.7	4.8	37.9	69.1	12.5	8.7	14.2	330.2
2016/17 prel.	1,366.9	964.3	402.6	25.8	33.3	40.8	39.3	nr	227.4	44.4	10.9	6.1	5.3	48.6	101.4	16.8	18.0	10.9	335.5
2017/18 proj.																			
Sep	1,316.5	942.7	373.9	25.4	32.8	44.3	37.5	nr	223.0	42.2	11.4	6.3	5.0	49.0	97.6	11.4	12.9	13.1	330.7
Oct	1,319.4	943.3	376.0	25.6	33.0	43.6	37.0	nr	223.0	42.2	11.4	6.3	5.0	49.0	97.6	11.4	12.9	13.6	331.7
Rice, Milled																			
2015/16	472.6	466.4	6.1	0.0	0.2	0.7	0.0	nr	145.8	104.4	36.2	6.8	15.8	0.9	7.2	0.2	0.0	0.5	147.7
2016/17 prel.	487.1	480.0	7.1	0.0	0.2	0.7	0.0	nr	144.9	110.2	37.2	6.9	19.2	0.9	8.4	0.6	0.0	0.5	150.6
2017/18 proj.																			
Sep	483.4	477.7	5.7	0.0	0.2	0.7	0.0	nr	144.0	110.0	37.0	6.9	20.4	0.9	8.0	0.6	0.0	0.5	148.4
Oct	483.8	478.1	5.7	0.0	0.2	0.7	0.0	nr	144.0	110.0	37.0	6.9	20.4	0.9	7.8	0.6	0.0	0.5	149.1
Total Grains																			
2015/16	2,467.5	2,038.2	429.3	53.2	36.3	99.2	60.7	nr	507.4	229.6	46.7	37.6	20.6	50.1	81.9	35.0	10.1	34.2	735.5
2016/17 prel.	2,608.2	2,135.6	472.6	57.5	37.4	114.0	66.1	nr	501.1	241.5	48.1	38.5	24.5	67.8	116.5	50.9	19.9	28.6	723.2
2017/18 proj.																			
Sep	2,544.7	2,117.8	426.9	51.9	36.7	126.0	64.0	nr	497.0	248.2	48.4	39.4	25.4	67.4	110.8	34.6	14.5	33.7	720.0
Oct	2,554.3	2,125.3	429.1	52.6	36.8	126.3	63.5	nr	497.0	250.6	48.4	39.4	25.4	67.4	110.5	33.6	14.7	35.2	724.1
Oilseeds																			
2015/16	521.4	405.5	115.9	24.8	1.0	12.9	17.6	nr	54.5	29.4	11.8	3.5	0.9	60.8	99.0	3.7	1.5	2.3	81.9
2016/17 prel.	573.1	446.1	126.9	26.1	1.1	15.0	20.7	nr	55.0	37.8	12.3	3.7	0.9	62.7	117.0	5.5	2.3	2.7	83.3
2017/18 proj.																			
Sep	578.6	445.8	132.8	28.1	1.2	16.7	20.7	nr	57.0	36.5	12.7	4.4	1.0	62.5	110.1	4.9	2.2	3.1	84.9
Oct	577.0	444.7	132.3	28.1	1.3	16.1	19.6	nr	57.3	36.5	12.7	4.4	1.0	62.6	110.3	4.7	2.2	3.1	85.0
Cotton																			
2015/16	96.2	83.3	12.9	0.0	0.9	0.0	0.0	1.3	22.0	25.9	0.0	7.0	0.0	0.8	5.9	2.9	0.0	2.7	13.9
2016/17 prel.	106.6	89.4	17.2	0.0	0.8	0.0	0.0	1.3	22.8	27.0	0.0	7.7	0.0	0.8	7.0	4.2	0.1	3.2	14.7
2017/18 proj.																			
Sep	120.8	99.0	21.8	0.0	1.4	0.0	0.0	1.4	24.5	30.0	0.0	9.2	0.0	0.7	7.5	5.0	0.1	3.8	15.5
Oct	120.9	99.7	21.1	0.0	1.5	0.0	0.0	1.5	24.5	30.0	0.0	9.2	0.0	1.1	7.8	5.0	0.1	3.8	15.4

1/ Includes wheat, coarse grains, and rice (milled) shown above.

Table 02 Wheat Area, Yield, and Production

Country / Region	Area (Million hectares)				Yield (Metric tons per hectare)				Production (Million metric tons)				Change in Production			
	2015/16	Prel.	2017/18 Proj.		2015/16	Prel.	2017/18 Proj.		2015/16	Prel.	2017/18 Proj.		From last month		From last year	
		2016/17	Sep	Oct		2016/17	Sep	Oct		2016/17	Sep	Oct	MMT	Percent	MMT	Percent
World	223.66	222.34	220.43	219.57	3.29	3.39	3.38	3.42	735.26	754.15	744.85	751.19	6.34	0.85	-2.96	-0.39
United States	19.15	17.75	15.43	15.21	2.93	3.54	3.07	3.11	56.12	62.83	47.33	47.37	0.04	0.08	-15.46	-24.61
Total Foreign	204.51	204.60	205.01	204.35	3.32	3.38	3.40	3.44	679.14	691.32	697.52	703.81	6.30	0.90	12.50	1.81
European Union	26.83	27.31	26.64	26.64	5.98	5.33	5.59	5.67	160.48	145.47	148.87	151.04	2.17	1.46	5.57	3.83
China	24.14	24.19	24.20	24.20	5.39	5.33	5.37	5.37	130.19	128.85	130.00	130.00	0.00	0.00	1.15	0.89
South Asia																
India	31.47	30.22	30.72	30.60	2.75	2.88	3.13	3.22	86.53	87.00	96.00	98.38	2.38	2.48	11.38	13.08
Pakistan	9.20	9.20	9.05	9.05	2.73	2.78	2.90	2.90	25.10	25.60	26.20	26.20	0.00	0.00	0.60	2.34
Afghanistan	2.55	2.55	2.55	2.55	1.96	2.00	1.96	1.96	5.00	5.10	5.00	5.00	0.00	0.00	-0.10	-1.96
Nepal	0.77	0.77	0.77	0.77	2.25	2.23	2.31	2.31	1.74	1.72	1.78	1.78	0.00	0.00	0.06	3.61
Former Soviet Union - 12																
Russia	25.58	27.00	26.80	26.80	2.39	2.69	3.02	3.06	61.04	72.53	81.00	82.00	1.00	1.23	9.47	13.06
Ukraine	7.12	6.45	6.60	6.60	3.83	4.16	4.02	4.02	27.27	26.80	26.50	26.50	0.00	0.00	-0.30	-1.12
Kazakhstan	11.57	12.37	11.80	11.80	1.19	1.21	1.19	1.19	13.75	14.99	14.00	14.00	0.00	0.00	-0.99	-6.57
Uzbekistan	1.40	1.40	1.40	1.40	5.14	5.14	5.14	5.14	7.20	7.20	7.20	7.20	0.00	0.00	0.00	0.00
Belarus	0.73	0.70	0.70	0.70	3.96	3.71	3.71	3.71	2.90	2.60	2.60	2.60	0.00	0.00	0.00	0.00
Canada	9.58	8.88	9.00	9.00	2.88	3.57	2.94	3.00	27.59	31.70	26.50	27.00	0.50	1.89	-4.70	-14.83
South America																
Argentina	3.95	5.56	5.60	5.60	2.86	3.31	3.13	3.13	11.30	18.40	17.50	17.50	0.00	0.00	-0.90	-4.89
Brazil	2.45	2.12	1.95	1.90	2.26	3.17	2.67	2.68	5.54	6.73	5.20	5.10	-0.10	-1.92	-1.63	-24.22
Uruguay	0.33	0.22	0.19	0.19	3.61	3.52	3.24	3.24	1.19	0.76	0.60	0.60	0.00	0.00	-0.16	-20.74
Australia	11.28	12.40	12.50	12.50	1.97	2.70	1.80	1.72	22.28	33.50	22.50	21.50	-1.00	-4.44	-12.00	-35.82
Africa																
Egypt	1.26	1.26	1.26	1.26	6.43	6.43	6.43	6.43	8.10	8.10	8.10	8.10	0.00	0.00	0.00	0.00
Morocco	3.31	2.41	3.30	3.32	2.44	1.13	1.76	1.88	8.06	2.73	5.80	6.25	0.45	7.76	3.52	128.85
Ethiopia	1.60	1.60	1.60	1.60	2.19	2.44	2.63	2.63	3.50	3.90	4.20	4.20	0.00	0.00	0.30	7.69
Algeria	2.10	1.30	2.10	1.60	1.29	1.54	1.19	1.50	2.70	2.00	2.50	2.40	-0.10	-4.00	0.40	20.00
Middle East																
Turkey	7.86	7.82	7.80	7.80	2.48	2.21	2.56	2.69	19.50	17.25	20.00	21.00	1.00	5.00	3.75	21.74
Iran	6.80	6.80	6.80	6.80	2.21	2.28	2.21	2.21	15.00	15.50	15.00	15.00	0.00	0.00	-0.50	-3.23
Iraq	2.45	2.35	2.23	2.23	1.80	1.80	1.81	1.81	4.41	4.23	4.03	4.03	0.00	0.00	-0.20	-4.73
Syria	1.45	1.10	1.10	1.10	2.41	2.18	2.00	2.00	3.50	2.40	2.20	2.20	0.00	0.00	-0.20	-8.33
Mexico	0.83	0.72	0.68	0.66	4.55	5.39	5.37	5.38	3.75	3.88	3.65	3.55	-0.10	-2.74	-0.33	-8.60
Others	7.93	7.90	7.69	7.69	2.71	2.83	2.68	2.69	21.52	22.39	20.59	20.69	0.10	0.49	-1.70	-7.59

World and Selected Countries and Regions

Table 03 Total Coarse Grain Area, Yield, and Production

Country / Region	Area (Million hectares)				Yield (Metric tons per hectare)				Production (Million metric tons)				Change in Production			
	2015/16	Prel.	2017/18 Proj.		2015/16	Prel.	2017/18 Proj.		2015/16	Prel.	2017/18 Proj.		From last month		From last year	
		2016/17	Sep	Oct		2016/17	Sep	Oct		2016/17	Sep	Oct	MMT	Percent	MMT	Percent
World	322.67	324.06	322.38	322.01	3.90	4.22	4.08	4.10	1,259.64	1,366.94	1,316.52	1,319.36	2.84	0.22	-47.58	-3.48
United States	37.80	39.20	37.26	36.91	9.71	10.27	10.03	10.19	367.01	402.61	373.86	376.04	2.18	0.58	-26.57	-6.60
Total Foreign	284.87	284.86	285.12	285.10	3.13	3.39	3.31	3.31	892.63	964.32	942.66	943.31	0.66	0.07	-21.01	-2.18
China	40.16	38.99	37.27	37.27	5.76	5.83	5.98	5.98	231.40	227.44	223.04	223.04	0.00	0.00	-4.40	-1.93
European Union	30.21	29.45	29.74	29.74	5.05	5.17	5.05	5.04	152.69	152.26	150.19	149.98	-0.22	-0.14	-2.28	-1.50
South America																
Brazil	17.00	18.61	18.71	18.71	4.07	5.45	5.22	5.22	69.13	101.35	97.60	97.60	0.00	0.00	-3.75	-3.70
Argentina	5.78	6.84	7.03	7.03	6.56	7.11	6.97	6.97	37.94	48.57	49.00	49.00	0.00	0.00	0.44	0.90
Former Soviet Union - 12																
Russia	15.23	15.14	15.15	15.15	2.46	2.69	2.92	2.88	37.43	40.77	44.30	43.60	-0.70	-1.58	2.84	6.95
Ukraine	7.62	7.83	7.64	7.64	4.38	5.01	4.91	4.84	33.39	39.26	37.49	36.99	-0.50	-1.33	-2.27	-5.77
Kazakhstan	2.46	2.33	2.47	2.47	1.51	1.90	1.54	1.54	3.73	4.43	3.80	3.80	0.00	0.00	-0.64	-14.33
Belarus	0.95	1.22	1.15	1.15	3.48	3.37	3.48	3.48	3.32	4.10	4.00	4.00	0.00	0.00	-0.10	-2.44
Africa																
Nigeria	12.75	12.75	13.15	12.65	1.31	1.52	1.39	1.49	16.68	19.34	18.25	18.85	0.60	3.29	-0.49	-2.51
South Africa	2.41	3.18	3.09	3.09	3.61	5.67	4.19	4.19	8.68	18.04	12.95	12.95	0.00	0.00	-5.09	-28.21
Tanzania	5.15	5.33	5.35	5.35	1.39	1.12	1.24	1.21	7.17	5.94	6.65	6.50	-0.15	-2.26	0.56	9.43
Burkina	3.85	3.85	3.85	3.85	1.00	1.09	1.14	1.14	3.85	4.18	4.40	4.40	0.00	0.00	0.22	5.26
Ethiopia	5.41	5.64	5.66	5.66	2.41	2.25	2.34	2.30	13.04	12.70	13.24	13.04	-0.20	-1.51	0.34	2.64
Egypt	0.97	0.97	0.97	0.97	7.05	7.05	7.05	7.05	6.86	6.86	6.86	6.86	0.00	0.00	0.00	0.00
Mali	3.95	3.85	3.85	3.85	1.43	1.56	1.27	1.27	5.67	6.01	4.90	4.90	0.00	0.00	-1.11	-18.50
India	24.51	24.50	24.15	24.15	1.58	1.81	1.75	1.75	38.70	44.35	42.24	42.24	0.00	0.00	-2.11	-4.76
Southeast Asia																
Indonesia	3.30	3.40	3.50	3.50	3.18	3.21	3.24	3.24	10.50	10.90	11.35	11.35	0.00	0.00	0.45	4.13
Philippines	2.42	2.68	2.70	2.70	2.88	3.02	3.07	3.07	6.97	8.09	8.30	8.30	0.00	0.00	0.21	2.63
Vietnam	1.15	1.20	1.20	1.20	4.55	4.64	4.67	4.67	5.23	5.57	5.60	5.60	0.00	0.00	0.03	0.57
Thailand	1.12	1.20	1.13	1.13	4.25	4.39	4.39	4.39	4.76	5.25	4.95	4.95	0.00	0.00	-0.30	-5.71
Mexico	9.25	9.28	9.25	9.30	3.50	3.59	3.55	3.55	32.38	33.32	32.83	33.03	0.20	0.61	-0.29	-0.87
Canada	4.88	4.65	4.75	4.77	5.25	5.55	5.34	5.36	25.62	25.82	25.36	25.56	0.20	0.79	-0.26	-1.02
Australia	5.58	5.49	5.27	5.37	2.25	3.07	2.17	2.13	12.54	16.83	11.43	11.43	0.00	0.00	-5.41	-32.12
Middle East																
Turkey	4.31	4.26	4.24	4.29	3.31	2.56	3.10	3.18	14.24	10.89	13.14	13.64	0.50	3.80	2.75	25.25
Iran	1.74	1.74	1.84	1.84	3.20	3.20	3.08	3.08	5.56	5.56	5.66	5.66	0.00	0.00	0.10	1.80
Others	72.73	70.52	72.03	72.29	1.45	1.51	1.46	1.47	105.18	106.52	105.14	106.07	0.92	0.88	-0.45	-0.42

World and Selected Countries and Regions; Coarse Grain includes: Barley, Corn, Millet, Mixed Grains, Oats, Rye and Sorghum

Table 04 Corn Area, Yield, and Production

Country / Region	Area (Million hectares)				Yield (Metric tons per hectare)				Production (Million metric tons)				Change in Production			
	2015/16	Prel.	2017/18 Proj.		2015/16	Prel.	2017/18 Proj.		2015/16	Prel.	2017/18 Proj.		From last month		From last year	
		2016/17	Sep	Oct		2016/17	Sep	Oct		2016/17	Sep	Oct	MMT	Percent	MMT	Percent
World	180.71	185.67	182.81	184.92	5.38	5.79	5.65	5.62	972.36	1,075.33	1,032.63	1,038.80	6.17	0.60	-36.54	-3.40
United States	32.68	35.11	33.79	33.64	10.57	10.96	10.66	10.78	345.51	384.78	360.30	362.73	2.43	0.67	-22.05	-5.73
Total Foreign	148.03	150.56	149.02	151.28	4.23	4.59	4.51	4.47	626.85	690.56	672.33	676.06	3.74	0.56	-14.49	-2.10
China	38.12	36.76	35.00	35.00	5.89	5.97	6.14	6.14	224.63	219.55	215.00	215.00	0.00	0.00	-4.55	-2.07
South America																
Brazil	16.00	17.60	17.70	17.70	4.19	5.60	5.37	5.37	67.00	98.50	95.00	95.00	0.00	0.00	-3.50	-3.55
Argentina	3.50	4.90	5.20	5.20	8.29	8.37	8.08	8.08	29.00	41.00	42.00	42.00	0.00	0.00	1.00	2.44
Bolivia	0.38	0.09	0.37	0.37	2.47	1.38	2.50	2.50	0.94	0.12	0.93	0.93	0.00	0.00	0.81	670.83
European Union	9.25	8.58	8.60	8.60	6.35	7.12	6.90	6.90	58.75	61.09	59.39	59.39	0.00	0.00	-1.71	-2.80
Africa																
South Africa	2.21	3.00	2.90	2.90	3.71	5.83	4.31	4.31	8.21	17.48	12.50	12.50	0.00	0.00	-4.98	-28.47
Nigeria	5.80	5.80	3.80	5.80	1.64	1.85	1.82	1.81	9.54	10.76	6.90	10.50	3.60	52.17	-0.26	-2.37
Ethiopia	2.15	2.20	2.22	2.22	3.16	2.89	3.02	2.93	6.80	6.35	6.70	6.50	-0.20	-2.99	0.15	2.36
Egypt	0.75	0.75	0.75	0.75	8.00	8.00	8.00	8.00	6.00	6.00	6.00	6.00	0.00	0.00	0.00	0.00
Tanzania	4.00	4.20	4.20	4.20	1.50	1.15	1.31	1.27	6.00	4.82	5.50	5.35	-0.15	-2.73	0.54	11.11
Malawi	1.75	1.65	1.70	1.70	1.59	1.44	2.12	2.12	2.78	2.37	3.60	3.60	0.00	0.00	1.23	51.96
Zambia	0.96	1.16	1.43	1.43	2.72	2.48	2.52	2.52	2.62	2.87	3.61	3.61	0.00	0.00	0.73	25.55
Kenya	2.10	2.10	2.10	2.10	1.76	1.49	1.40	1.40	3.69	3.13	2.95	2.95	0.00	0.00	-0.18	-5.75
Uganda	1.10	1.10	1.10	1.10	2.04	2.18	2.36	2.27	2.25	2.40	2.60	2.50	-0.10	-3.85	0.10	4.17
Zimbabwe	1.53	0.77	1.88	1.88	0.48	0.66	1.15	1.15	0.74	0.51	2.16	2.16	0.00	0.00	1.64	320.90
Former Soviet Union - 12																
Ukraine	4.09	4.25	4.50	4.50	5.71	6.59	6.11	6.00	23.33	28.00	27.50	27.00	-0.50	-1.82	-1.00	-3.57
Russia	2.67	2.78	3.00	3.00	4.93	5.51	5.33	5.10	13.17	15.31	16.00	15.30	-0.70	-4.38	-0.01	-0.03
South Asia																
India	8.81	9.60	9.50	9.50	2.56	2.74	2.63	2.63	22.57	26.26	25.00	25.00	0.00	0.00	-1.26	-4.80
Pakistan	1.21	1.30	1.35	1.35	4.38	4.31	4.30	4.30	5.30	5.60	5.80	5.80	0.00	0.00	0.20	3.57
Nepal	0.85	0.90	0.90	0.90	2.35	2.22	2.22	2.22	2.00	2.00	2.00	2.00	0.00	0.00	0.00	0.00
Southeast Asia																
Indonesia	3.30	3.40	3.50	3.50	3.18	3.21	3.24	3.24	10.50	10.90	11.35	11.35	0.00	0.00	0.45	4.13
Philippines	2.42	2.68	2.70	2.70	2.88	3.02	3.07	3.07	6.97	8.09	8.30	8.30	0.00	0.00	0.21	2.63
Vietnam	1.15	1.20	1.20	1.20	4.55	4.64	4.67	4.67	5.23	5.57	5.60	5.60	0.00	0.00	0.03	0.57
Thailand	1.09	1.17	1.10	1.10	4.31	4.45	4.45	4.45	4.70	5.20	4.90	4.90	0.00	0.00	-0.30	-5.77
Mexico	7.21	7.45	7.20	7.25	3.60	3.70	3.61	3.61	25.97	27.57	26.00	26.20	0.20	0.77	-1.37	-4.95
Canada	1.31	1.33	1.40	1.42	10.33	9.96	9.93	9.93	13.56	13.20	13.90	14.10	0.20	1.44	0.90	6.82
Turkey	0.62	0.57	0.55	0.60	10.00	9.65	10.00	10.00	6.20	5.50	5.50	6.00	0.50	9.09	0.50	9.09
Others	23.71	23.28	23.17	23.31	2.46	2.60	2.40	2.43	58.40	60.42	55.65	56.54	0.89	1.60	-3.88	-6.42

World and Selected Countries and Regions

Table 05 Barley Area, Yield, and Production

Country / Region	Area (Million hectares)				Yield (Metric tons per hectare)				Production (Million metric tons)				Change in Production			
	2015/16	Prel.		2017/18 Proj.		2015/16	Prel.		2017/18 Proj.		2015/16	Prel.		2017/18 Proj.		
		2016/17	Sep	Oct	2016/17		Sep	Oct	2016/17	Sep		Oct	MMT	Percent	MMT	Percent
World	50.33	48.25	47.79	47.71	2.97	3.07	2.97	2.98	149.64	148.03	141.86	142.00	0.14	0.10	-6.03	-4.07
United States	1.28	1.04	0.79	0.79	3.72	4.19	3.87	3.91	4.75	4.35	3.05	3.09	0.04	1.21	-1.26	-29.01
Total Foreign	49.05	47.21	47.00	46.92	2.95	3.04	2.95	2.96	144.89	143.67	138.81	138.91	0.10	0.07	-4.76	-3.31
European Union	12.25	12.31	12.39	12.39	5.07	4.87	4.72	4.74	62.10	59.90	58.43	58.77	0.33	0.57	-1.14	-1.90
Former Soviet Union - 12																
Russia	8.04	7.96	7.90	7.90	2.12	2.21	2.59	2.59	17.08	17.55	20.50	20.50	0.00	0.00	2.95	16.83
Ukraine	3.00	3.05	2.65	2.65	2.92	3.25	3.28	3.28	8.75	9.90	8.70	8.70	0.00	0.00	-1.20	-12.12
Kazakhstan	2.04	1.89	2.05	2.05	1.31	1.71	1.32	1.32	2.68	3.23	2.70	2.70	0.00	0.00	-0.53	-16.43
Belarus	0.50	0.60	0.55	0.55	3.70	3.50	3.45	3.45	1.85	2.10	1.90	1.90	0.00	0.00	-0.20	-9.52
Azerbaijan	0.36	0.35	0.35	0.35	2.95	2.71	2.71	2.71	1.06	0.95	0.95	0.95	0.00	0.00	0.00	0.00
Canada	2.35	2.22	2.10	2.10	3.49	3.96	3.45	3.45	8.23	8.80	7.25	7.25	0.00	0.00	-1.55	-17.61
Australia	4.11	4.04	3.80	3.90	2.19	3.32	2.11	2.05	8.99	13.41	8.00	8.00	0.00	0.00	-5.41	-40.36
Middle East																
Turkey	3.40	3.40	3.40	3.40	2.18	1.40	2.06	2.06	7.40	4.75	7.00	7.00	0.00	0.00	2.25	47.37
Iran	1.30	1.30	1.40	1.40	2.31	2.31	2.21	2.21	3.00	3.00	3.10	3.10	0.00	0.00	0.10	3.33
Iraq	1.25	1.20	1.03	1.03	1.24	1.29	1.24	1.24	1.55	1.55	1.28	1.28	0.00	0.00	-0.28	-17.74
Syria	0.70	0.45	0.45	0.45	0.71	0.72	0.71	0.71	0.50	0.33	0.32	0.32	0.00	0.00	-0.01	-1.54
Africa																
Ethiopia	1.20	1.20	1.20	1.20	1.63	1.71	1.73	1.73	1.95	2.05	2.07	2.07	0.00	0.00	0.02	0.98
Morocco	2.06	1.21	1.80	1.80	1.65	0.51	1.11	1.11	3.40	0.62	2.00	2.00	0.00	0.00	1.38	222.58
Algeria	1.00	0.90	0.95	0.76	1.30	1.11	1.26	1.27	1.30	1.00	1.20	0.97	-0.23	-19.33	-0.03	-3.20
Tunisia	0.38	0.28	0.38	0.38	0.97	1.34	1.33	1.33	0.37	0.38	0.50	0.50	0.00	0.00	0.13	33.33
South Africa	0.09	0.09	0.09	0.09	3.53	3.98	2.94	2.94	0.33	0.35	0.27	0.27	0.00	0.00	-0.09	-25.14
South America																
Argentina	1.25	0.87	0.73	0.73	3.95	3.79	3.77	3.77	4.94	3.30	2.75	2.75	0.00	0.00	-0.55	-16.67
Uruguay	0.09	0.19	0.14	0.14	3.86	3.57	4.14	4.14	0.36	0.68	0.58	0.58	0.00	0.00	-0.10	-14.45
Brazil	0.13	0.11	0.11	0.11	2.07	3.02	2.86	2.86	0.26	0.32	0.30	0.30	0.00	0.00	-0.02	-5.36
India	0.71	0.70	0.65	0.65	2.28	2.71	2.68	2.68	1.61	1.90	1.74	1.74	0.00	0.00	-0.16	-8.42
China	0.45	0.50	0.52	0.52	4.18	4.00	4.04	4.04	1.87	2.00	2.10	2.10	0.00	0.00	0.10	5.00
Mexico	0.32	0.33	0.30	0.30	2.33	2.96	2.45	2.45	0.74	0.98	0.74	0.74	0.00	0.00	-0.24	-24.85
Afghanistan	0.28	0.28	0.28	0.28	1.43	1.50	1.46	1.46	0.40	0.42	0.41	0.41	0.00	0.00	-0.01	-2.38
Others	1.79	1.80	1.80	1.80	2.33	2.34	2.24	2.24	4.18	4.21	4.03	4.03	0.00	0.00	-0.18	-4.23

World and Selected Countries and Regions

Table 06 Oats Area, Yield, and Production

Country / Region	Area (Million hectares)				Yield (Metric tons per hectare)				Production (Million metric tons)				Change in Production			
	2015/16	Prel.	2017/18 Proj.		2015/16	Prel.	2017/18 Proj.		2015/16	Prel.	2017/18 Proj.		From last month		From last year	
		2016/17	Sep	Oct		2016/17	Sep	Oct		2016/17	Sep	Oct	MMT	Percent	MMT	Percent
World	9.58	9.48	9.47	9.47	2.34	2.49	2.43	2.41	22.40	23.60	23.01	22.85	-0.16	-0.68	-0.75	-3.19
United States	0.52	0.40	0.36	0.32	2.52	2.37	2.19	2.21	1.30	0.94	0.78	0.72	-0.06	-8.08	-0.22	-23.72
Total Foreign	9.06	9.09	9.11	9.14	2.33	2.49	2.44	2.42	21.10	22.66	22.23	22.13	-0.09	-0.42	-0.53	-2.34
European Union	2.50	2.56	2.59	2.62	3.02	3.14	3.11	3.04	7.55	8.03	8.05	7.96	-0.09	-1.15	-0.07	-0.92
Former Soviet Union - 12																
Russia	2.83	2.75	2.80	2.80	1.60	1.73	1.75	1.75	4.53	4.75	4.90	4.90	0.00	0.00	0.15	3.16
Ukraine	0.22	0.21	0.20	0.20	2.29	2.40	2.56	2.56	0.50	0.50	0.50	0.50	0.00	0.00	0.00	0.00
Belarus	0.15	0.14	0.15	0.15	3.26	2.86	3.33	3.33	0.49	0.40	0.50	0.50	0.00	0.00	0.10	25.00
Kazakhstan	0.20	0.21	0.22	0.22	1.20	1.60	1.26	1.26	0.24	0.34	0.27	0.27	0.00	0.00	-0.07	-19.40
Canada	1.06	0.91	1.07	1.07	3.25	3.52	3.46	3.46	3.43	3.20	3.70	3.70	0.00	0.00	0.51	15.81
South America																
Argentina	0.24	0.32	0.30	0.30	2.30	2.45	2.24	2.24	0.55	0.79	0.66	0.66	0.00	0.00	-0.13	-15.92
Brazil	0.29	0.29	0.29	0.29	2.69	2.84	2.37	2.37	0.78	0.83	0.70	0.70	0.00	0.00	-0.13	-15.94
Chile	0.11	0.14	0.14	0.14	4.94	5.20	4.75	4.75	0.53	0.71	0.67	0.67	0.00	0.00	-0.04	-6.03
Uruguay	0.03	0.03	0.03	0.03	1.38	1.58	1.52	1.52	0.04	0.04	0.04	0.04	0.00	0.00	0.00	-7.32
Oceania																
Australia	0.82	0.91	0.70	0.70	1.58	2.05	1.50	1.50	1.30	1.87	1.05	1.05	0.00	0.00	-0.82	-43.94
New Zealand	0.01	0.01	0.01	0.01	4.83	5.29	5.00	5.00	0.03	0.04	0.04	0.04	0.00	0.00	0.00	-5.41
China	0.18	0.19	0.19	0.19	1.00	1.00	1.00	1.00	0.18	0.19	0.19	0.19	0.00	0.00	0.01	2.70
Africa																
Algeria	0.09	0.09	0.09	0.09	1.29	1.29	1.29	1.29	0.11	0.11	0.11	0.11	0.00	0.00	0.00	0.00
Morocco	0.05	0.05	0.05	0.05	1.19	1.44	1.44	1.44	0.06	0.07	0.07	0.07	0.00	0.00	0.00	0.00
South Africa	0.03	0.03	0.03	0.03	1.83	1.83	1.83	1.83	0.06	0.06	0.06	0.06	0.00	0.00	0.00	0.00
Other Europe																
Norway	0.06	0.08	0.08	0.08	4.54	4.34	4.00	4.00	0.29	0.33	0.30	0.30	0.00	0.00	-0.03	-9.09
Serbia	0.03	0.03	0.03	0.03	2.20	2.17	2.17	2.17	0.07	0.07	0.07	0.07	0.00	0.00	0.00	0.00
Albania	0.01	0.01	0.01	0.01	2.08	2.08	2.08	2.08	0.03	0.03	0.03	0.03	0.00	0.00	0.00	0.00
Bosnia and Herzegovina	0.01	0.01	0.01	0.01	2.67	2.90	2.57	2.57	0.02	0.03	0.02	0.02	0.00	0.00	-0.01	-37.93
Turkey	0.09	0.09	0.09	0.09	2.33	2.33	2.33	2.33	0.21	0.21	0.21	0.21	0.00	0.00	0.00	0.00
Mexico	0.05	0.04	0.05	0.05	1.81	1.89	1.80	1.80	0.09	0.07	0.09	0.09	0.00	0.00	0.02	25.00
Others	0.01	0.01	0.01	0.01	1.93	1.79	1.79	1.79	0.03	0.03	0.03	0.03	0.00	0.00	0.00	0.00

World and Selected Countries and Regions

Table 07 Rye Area, Yield, and Production

Country / Region	Area (Million hectares)				Yield (Metric tons per hectare)				Production (Million metric tons)				Change in Production			
	2015/16	Prel.	2017/18 Proj.		2015/16	Prel.	2017/18 Proj.		2015/16	Prel.	2017/18 Proj.		From last month		From last year	
		2016/17	Sep	Oct		2016/17	Sep	Oct		2016/17	Sep	Oct	MMT	Percent	MMT	Percent
World	4.15	4.22	4.26	4.16	2.93	2.97	2.99	2.99	12.17	12.55	12.73	12.45	-0.28	-2.18	-0.10	-0.78
United States	0.15	0.17	0.17	0.12	1.99	2.04	1.79	2.12	0.30	0.34	0.31	0.25	-0.07	-20.90	-0.10	-28.07
Total Foreign	4.00	4.05	4.09	4.05	2.97	3.01	3.04	3.02	11.88	12.21	12.42	12.21	-0.21	-1.71	0.00	-0.02
European Union	1.96	1.90	2.01	1.97	3.99	3.94	3.86	3.83	7.83	7.49	7.76	7.55	-0.21	-2.73	0.06	0.80
Former Soviet Union - 12																
Russia	1.25	1.25	1.20	1.20	1.67	2.03	2.08	2.08	2.08	2.54	2.50	2.50	0.00	0.00	-0.04	-1.50
Belarus	0.25	0.33	0.30	0.30	3.01	2.46	2.67	2.67	0.75	0.80	0.80	0.80	0.00	0.00	0.00	0.00
Ukraine	0.15	0.14	0.17	0.17	2.59	2.71	2.65	2.65	0.39	0.39	0.45	0.45	0.00	0.00	0.06	15.38
Kazakhstan	0.04	0.04	0.02	0.02	0.97	1.14	1.25	1.25	0.04	0.04	0.03	0.03	0.00	0.00	-0.01	-26.83
Turkey	0.14	0.14	0.14	0.14	2.50	2.50	2.50	2.50	0.35	0.35	0.35	0.35	0.00	0.00	0.00	0.00
Canada	0.10	0.13	0.12	0.12	2.38	3.22	2.78	2.78	0.23	0.42	0.32	0.32	0.00	0.00	-0.10	-22.89
South America																
Chile	0.00	0.00	0.00	0.00	5.00	5.00	5.00	5.00	0.01	0.01	0.01	0.01	0.00	0.00	0.00	0.00
Argentina	0.03	0.04	0.04	0.04	1.79	1.93	2.10	2.10	0.06	0.08	0.08	0.08	0.00	0.00	0.00	3.80
Other Europe																
Bosnia and Herzegovina	0.00	0.00	0.00	0.00	2.50	3.25	2.75	2.75	0.01	0.01	0.01	0.01	0.00	0.00	0.00	-15.38
Switzerland	0.00	0.00	0.00	0.00	5.50	5.50	5.50	5.50	0.01	0.01	0.01	0.01	0.00	0.00	0.00	0.00
Serbia	0.00	0.00	0.00	0.00	2.50	2.50	2.50	2.50	0.01	0.01	0.01	0.01	0.00	0.00	0.00	0.00
Australia	0.04	0.04	0.04	0.04	0.61	0.63	0.65	0.65	0.02	0.03	0.03	0.03	0.00	0.00	0.00	4.00
Others	0.04	0.03	0.04	0.04	2.24	1.21	1.71	1.71	0.08	0.04	0.06	0.06	0.00	0.00	0.02	50.00

World and Selected Countries and Regions

Table 08 Sorghum Area, Yield, and Production

Country / Region	Area (Million hectares)				Yield (Metric tons per hectare)				Production (Million metric tons)				Change in Production			
	Prel.		2017/18 Proj.		Prel.		2017/18 Proj.		Prel.		2017/18 Proj.		From last month		From last year	
	2015/16	2016/17	Sep	Oct	2015/16	2016/17	Sep	Oct	2015/16	2016/17	Sep	Oct	MMT	Percent	MMT	Percent
World	43.88	41.98	41.73	41.94	1.40	1.50	1.45	1.45	61.41	63.04	60.46	60.66	0.20	0.33	-2.39	-3.78
United States	3.18	2.49	2.15	2.04	4.77	4.89	4.38	4.53	15.16	12.20	9.42	9.26	-0.16	-1.67	-2.94	-24.11
Total Foreign	40.70	39.48	39.58	39.89	1.14	1.29	1.29	1.29	46.25	50.84	51.04	51.40	0.36	0.70	0.56	1.09
Africa																
Nigeria	5.45	5.45	5.35	5.35	1.04	1.26	1.22	1.22	5.66	6.89	6.55	6.55	0.00	0.00	-0.34	-4.89
Ethiopia	1.70	1.80	1.80	1.80	2.29	2.00	2.09	2.09	3.90	3.60	3.77	3.77	0.00	0.00	0.17	4.58
Sudan	8.00	8.00	8.00	8.00	0.30	0.73	0.56	0.56	2.39	5.86	4.50	4.50	0.00	0.00	-1.36	-23.26
Burkina	1.80	1.80	1.80	1.80	0.80	0.93	1.00	1.00	1.44	1.68	1.80	1.80	0.00	0.00	0.12	7.14
Mali	1.25	1.25	1.25	1.25	1.22	1.12	1.04	1.04	1.53	1.39	1.30	1.30	0.00	0.00	-0.09	-6.74
Niger	3.70	3.70	3.70	3.70	0.51	0.49	0.46	0.46	1.88	1.81	1.70	1.70	0.00	0.00	-0.11	-5.97
Cameroon	0.75	0.75	0.75	0.75	1.53	1.53	1.53	1.53	1.15	1.15	1.15	1.15	0.00	0.00	0.00	0.00
Tanzania	0.80	0.80	0.80	0.80	1.03	1.00	1.00	1.00	0.82	0.80	0.80	0.80	0.00	0.00	0.00	0.00
Egypt	0.14	0.14	0.14	0.14	5.36	5.36	5.36	5.36	0.75	0.75	0.75	0.75	0.00	0.00	0.00	0.00
Uganda	0.35	0.35	0.35	0.35	0.91	0.91	0.97	0.97	0.32	0.32	0.34	0.34	0.00	0.00	0.02	6.25
Ghana	0.25	0.25	0.25	0.25	0.91	1.04	1.12	1.12	0.23	0.26	0.28	0.28	0.00	0.00	0.02	7.69
Mozambique	0.37	0.40	0.40	0.40	0.60	0.60	0.60	0.65	0.22	0.24	0.24	0.26	0.02	8.33	0.02	8.33
South Africa	0.05	0.04	0.05	0.05	1.45	3.75	2.50	2.50	0.07	0.15	0.13	0.13	0.00	0.00	-0.03	-16.67
Mexico	1.68	1.46	1.70	1.70	3.33	3.22	3.53	3.53	5.59	4.70	6.00	6.00	0.00	0.00	1.30	27.66
South America																
Argentina	0.75	0.70	0.76	0.76	4.50	4.86	4.61	4.61	3.38	3.40	3.50	3.50	0.00	0.00	0.10	2.94
Brazil	0.58	0.61	0.61	0.61	1.86	2.80	2.62	2.62	1.08	1.70	1.60	1.60	0.00	0.00	-0.10	-5.94
South Asia																
India	6.08	5.10	5.00	5.00	0.70	0.90	0.90	0.90	4.24	4.57	4.50	4.50	0.00	0.00	-0.07	-1.53
Pakistan	0.24	0.20	0.20	0.20	0.60	0.65	0.65	0.65	0.15	0.13	0.13	0.13	0.00	0.00	0.00	0.00
China	0.57	0.76	0.78	0.78	4.79	5.00	4.94	4.94	2.75	3.80	3.85	3.85	0.00	0.00	0.05	1.32
Australia	0.52	0.39	0.63	0.63	3.44	2.63	3.02	3.02	1.79	1.02	1.90	1.90	0.00	0.00	0.88	86.82
European Union	0.13	0.12	0.12	0.12	5.27	5.41	5.45	5.50	0.67	0.64	0.65	0.67	0.02	2.62	0.03	4.23
Others	5.54	5.42	5.15	5.45	1.13	1.10	1.09	1.09	6.26	5.98	5.61	5.93	0.32	5.72	-0.05	-0.84

World and Selected Countries and Regions

Table 09 Rice Area, Yield, and Production
World and Selected Countries and Regions

Country / Region	Area (Million hectares)				Yield (Metric tons per hectare)				Production (Million metric tons)				Change in Production			
	Prel.		2017/18 Proj.		Prel.		2017/18 Proj.		Prel.		2017/18 Proj.		From last month		From last year	
	2015/16	2016/17	Sep	Oct	2015/16	2016/17	Sep	Oct	2015/16	2016/17	Sep	Oct	MMT	Percent	MMT	Percent
World	159.46	160.78	161.43	161.85	4.42	4.52	4.47	4.46	472.57	487.13	483.36	483.80	0.44	0.09	-3.33	-0.68
United States	1.05	1.25	0.97	0.97	8.38	8.11	8.41	8.37	6.13	7.12	5.71	5.67	-0.04	-0.65	-1.45	-20.33
Total Foreign	158.42	159.53	160.46	160.88	4.39	4.49	4.44	4.44	466.44	480.01	477.65	478.13	0.48	0.10	-1.88	-0.39
East Asia																
China	30.21	30.16	30.00	30.00	6.89	6.86	6.86	6.86	145.77	144.85	144.00	144.00	0.00	0.00	-0.85	-0.59
Japan	1.59	1.57	1.56	1.56	6.64	6.81	6.69	6.69	7.67	7.78	7.60	7.60	0.00	0.00	-0.18	-2.31
Korea, South	0.80	0.78	0.74	0.74	7.22	7.22	7.01	7.01	4.33	4.20	3.90	3.90	0.00	0.00	-0.30	-7.08
Korea, North	0.48	0.50	0.50	0.50	4.21	4.92	4.92	4.77	1.30	1.60	1.60	1.55	-0.05	-3.13	-0.05	-3.13
South Asia																
India	43.50	43.19	44.50	44.50	3.60	3.83	3.71	3.71	104.41	110.15	110.00	110.00	0.00	0.00	-0.15	-0.14
Bangladesh	11.77	11.75	11.50	11.30	4.40	4.42	4.37	4.38	34.50	34.58	33.50	33.00	-0.50	-1.49	-1.58	-4.56
Pakistan	2.74	2.69	2.70	2.70	3.72	3.82	3.83	3.83	6.80	6.85	6.90	6.90	0.00	0.00	0.05	0.73
Nepal	1.50	1.50	1.50	1.50	2.87	3.23	3.25	3.25	2.86	3.22	3.25	3.25	0.00	0.00	0.03	0.81
Sri Lanka	1.23	0.68	1.10	1.10	3.95	4.35	3.88	3.88	3.29	2.00	2.90	2.90	0.00	0.00	0.90	45.22
Southeast Asia																
Indonesia	12.10	12.24	12.20	12.20	4.71	4.78	4.78	4.78	36.20	37.15	37.00	37.00	0.00	0.00	-0.15	-0.40
Vietnam	7.70	7.73	7.73	7.73	5.73	5.79	5.89	5.89	27.58	27.97	28.45	28.45	0.00	0.00	0.48	1.71
Thailand	9.44	10.25	10.70	10.70	2.53	2.84	2.89	2.89	15.80	19.20	20.40	20.40	0.00	0.00	1.20	6.25
Burma	6.90	7.00	7.00	7.00	2.75	2.79	2.81	2.81	12.16	12.50	12.60	12.60	0.00	0.00	0.10	0.80
Philippines	4.52	4.72	4.50	4.50	3.86	3.93	3.95	3.95	11.00	11.69	11.20	11.20	0.00	0.00	-0.49	-4.16
Cambodia	3.03	3.09	3.12	3.12	2.50	2.51	2.51	2.51	4.85	4.95	5.00	5.00	0.00	0.00	0.05	1.01
Laos	0.97	0.97	0.98	0.98	3.17	3.19	3.24	3.24	1.93	1.95	2.00	2.00	0.00	0.00	0.05	2.56
Malaysia	0.69	0.70	0.70	0.70	4.01	4.03	4.03	4.03	1.80	1.82	1.82	1.82	0.00	0.00	0.00	0.00
South America																
Brazil	2.01	1.98	2.10	2.00	5.28	6.22	5.60	5.75	7.21	8.38	8.00	7.82	-0.18	-2.25	-0.56	-6.70
Peru	0.42	0.42	0.45	0.45	7.56	7.95	7.93	7.93	2.17	2.33	2.45	2.45	0.00	0.00	0.12	5.20
Africa																
Egypt	0.65	0.85	0.70	0.76	8.92	8.18	8.28	8.18	4.00	4.80	4.00	4.30	0.30	7.50	-0.50	-10.42
Madagascar	1.45	1.48	1.43	1.43	2.57	2.59	2.25	2.25	2.38	2.44	2.05	2.05	0.00	0.00	-0.39	-16.13
Nigeria	3.10	3.20	2.58	3.20	1.81	1.81	1.71	1.81	3.53	3.65	2.77	3.65	0.88	31.82	0.00	0.00
European Union	0.44	0.44	0.44	0.44	6.78	6.76	6.79	6.79	2.05	2.07	2.08	2.08	0.00	0.00	0.01	0.68
Iran	0.63	0.63	0.63	0.63	4.32	4.32	4.32	4.32	1.78	1.78	1.78	1.78	0.00	0.00	0.00	0.00
Others	10.58	11.03	11.12	11.16	3.03	3.04	3.06	3.05	21.06	22.10	22.40	22.42	0.02	0.11	0.32	1.46

Yield is on a rough basis, before the milling process. Production is on a milled basis, after the milling process.

Table 10 Total Oilseed Area, Yield, and Production

World and Selected Countries and Regions

Country / Region	Area (Million hectares)				Yield (Metric tons per hectare)				Production (Million metric tons)				Change in Production			
	Prel.		2017/18 Proj.		Prel.		2017/18 Proj.		Prel.		2017/18 Proj.		From last month		From last year	
	2015/16	2016/17	Sep	Oct	2015/16	2016/17	Sep	Oct	2015/16	2016/17	Sep	Oct	MMT	Percent	MMT	Percent
World Total	--	--	--	--	--	--	--	--	521.35	573.07	578.60	576.99	-1.61	-0.28	3.93	0.69
Total Foreign	--	--	--	--	--	--	--	--	405.47	446.13	445.82	444.72	-1.10	-0.25	-1.41	-0.32
Oilseed, Copra	--	--	--	--	--	--	--	--	5.32	5.41	5.54	5.54	0.00	0.00	0.13	2.38
Oilseed, Palm Kernel	--	--	--	--	--	--	--	--	15.96	16.80	18.04	18.04	0.00	0.00	1.25	7.42
Major Oilseeds	232.24	233.55	245.30	245.90	2.15	2.36	2.26	2.25	500.07	550.86	555.01	553.41	-1.61	-0.29	2.55	0.46
United States	38.40	39.25	42.65	42.94	3.02	3.23	3.11	3.08	115.88	126.94	132.77	132.27	-0.50	-0.38	5.34	4.21
Foreign Oilseeds	193.84	194.30	202.65	202.97	1.98	2.18	2.08	2.07	384.19	423.92	422.24	421.14	-1.10	-0.26	-2.79	-0.66
South America	62.18	61.75	64.00	64.20	2.82	3.18	2.95	2.94	175.14	196.29	188.60	188.87	0.27	0.14	-7.42	-3.78
Brazil	34.43	35.03	35.96	36.01	2.87	3.34	3.06	3.06	98.91	116.93	110.02	110.16	0.14	0.13	-6.77	-5.79
Argentina	21.50	20.68	21.68	21.83	2.83	3.03	2.88	2.87	60.80	62.69	62.48	62.61	0.13	0.20	-0.08	-0.13
Paraguay	3.41	3.50	3.52	3.52	2.75	3.09	2.71	2.71	9.39	10.80	9.54	9.54	0.00	0.00	-1.27	-11.71
Bolivia	1.48	1.23	1.57	1.57	2.25	1.77	2.25	2.25	3.34	2.17	3.52	3.52	0.00	0.00	1.35	62.14
Uruguay	1.18	1.13	1.10	1.10	1.92	2.90	2.37	2.37	2.27	3.28	2.60	2.60	0.00	0.00	-0.68	-20.74
China	22.74	22.93	23.68	23.73	2.39	2.40	2.41	2.41	54.45	55.00	56.95	57.25	0.30	0.53	2.25	4.09
South Asia	38.32	37.56	38.74	38.74	0.85	1.10	1.04	1.04	32.50	41.16	40.47	40.47	0.00	0.00	-0.69	-1.68
India	34.75	34.43	35.22	35.22	0.82	1.08	1.01	1.01	28.64	37.03	35.69	35.69	0.00	0.00	-1.34	-3.61
Pakistan	3.22	2.77	3.17	3.17	1.07	1.34	1.38	1.38	3.45	3.71	4.36	4.36	0.00	0.00	0.65	17.38
European Union	11.84	11.76	12.10	12.13	2.74	2.71	2.76	2.76	32.44	31.91	33.36	33.45	0.09	0.27	1.54	4.83
Former Soviet Union - 12	21.25	22.49	23.78	23.77	1.62	1.78	1.75	1.68	34.31	39.93	41.53	39.88	-1.65	-3.97	-0.05	-0.12
Russia	9.43	10.20	10.95	10.95	1.37	1.47	1.52	1.47	12.88	14.99	16.65	16.10	-0.55	-3.30	1.11	7.41
Ukraine	8.31	8.70	9.15	9.15	2.11	2.38	2.26	2.14	17.58	20.73	20.70	19.60	-1.10	-5.31	-1.13	-5.45
Uzbekistan	1.29	1.18	1.18	1.18	1.16	1.19	1.16	1.16	1.49	1.40	1.37	1.37	0.00	0.00	-0.03	-2.00
Canada	10.56	10.33	12.15	12.15	2.35	2.53	2.32	2.32	24.82	26.11	28.15	28.15	0.00	0.00	2.03	7.79
Africa	18.35	18.31	18.69	18.69	0.89	0.91	0.90	0.90	16.34	16.71	16.86	16.86	0.00	0.00	0.14	0.86
Nigeria	3.46	3.48	3.47	3.47	1.09	1.09	1.09	1.09	3.77	3.77	3.78	3.78	0.00	0.00	0.00	0.08
South Africa	1.25	1.29	1.43	1.43	1.23	1.82	1.52	1.52	1.54	2.35	2.16	2.16	0.00	0.00	-0.19	-7.93
Tanzania	1.24	1.19	1.19	1.19	0.74	0.77	0.76	0.76	0.92	0.92	0.91	0.91	0.00	0.00	-0.01	-1.30
Southeast Asia	3.30	3.29	3.28	3.28	1.41	1.41	1.41	1.41	4.65	4.64	4.64	4.64	0.00	0.00	0.00	-0.02
Indonesia	1.06	1.03	1.01	1.01	1.62	1.64	1.62	1.62	1.71	1.69	1.64	1.64	0.00	0.00	-0.05	-2.72
Burma	1.87	1.88	1.88	1.88	1.18	1.18	1.19	1.19	2.22	2.21	2.24	2.24	0.00	0.00	0.03	1.13
Australia	2.45	2.96	3.15	3.16	1.52	1.87	1.54	1.48	3.74	5.53	4.87	4.67	-0.19	-3.99	-0.86	-15.56
Turkey	1.02	1.10	1.20	1.20	2.24	2.43	2.61	2.61	2.28	2.68	3.14	3.14	0.00	0.00	0.47	17.38
Others	1.83	1.82	1.89	1.93	1.92	2.19	1.95	1.95	3.50	3.97	3.69	3.77	0.08	2.25	-0.20	-4.96

World Total and Total Foreign: (Major Oilseeds plus copra and palm kernel) Major Oilseeds: (soybeans, sunflowerseeds, peanuts(inshell), cottonseed and rapeseed)

Table 11 Soybean Area, Yield, and Production

Country / Region	Area (Million hectares)				Yield (Metric tons per hectare)				Production (Million metric tons)				Change in Production			
	2015/16	Prel.	2017/18 Proj.		2015/16	Prel.	2017/18 Proj.		2015/16	Prel.	2017/18 Proj.		From last month		From last year	
		2016/17	Sep	Oct		2016/17	Sep	Oct		2016/17	Sep	Oct	MMT	Percent	MMT	Percent
World	120.42	120.30	125.73	126.11	2.61	2.92	2.77	2.76	313.71	351.25	348.44	347.88	-0.55	-0.16	-3.37	-0.96
United States	33.08	33.47	35.91	36.21	3.23	3.49	3.36	3.33	106.86	116.92	120.59	120.58	-0.01	-0.01	3.66	3.13
Total Foreign	87.35	86.83	89.83	89.91	2.37	2.70	2.54	2.53	206.85	234.33	227.84	227.30	-0.54	-0.24	-7.03	-3.00
South America																
Brazil	33.30	33.90	34.70	34.70	2.90	3.37	3.08	3.08	96.50	114.10	107.00	107.00	0.00	0.00	-7.10	-6.22
Argentina	19.53	18.35	19.10	19.10	2.91	3.15	2.98	2.98	56.80	57.80	57.00	57.00	0.00	0.00	-0.80	-1.38
Paraguay	3.26	3.39	3.40	3.40	2.82	3.15	2.76	2.76	9.22	10.67	9.40	9.40	0.00	0.00	-1.27	-11.86
Bolivia	1.34	1.13	1.44	1.44	2.40	1.86	2.38	2.38	3.21	2.11	3.42	3.42	0.00	0.00	1.31	62.08
Uruguay	1.14	1.09	1.05	1.05	1.94	2.95	2.41	2.41	2.21	3.21	2.52	2.52	0.00	0.00	-0.69	-21.54
East Asia																
China	6.51	7.20	7.80	7.85	1.81	1.79	1.79	1.81	11.79	12.90	14.00	14.20	0.20	1.43	1.30	10.08
Korea, South	0.06	0.05	0.07	0.07	1.82	1.53	1.79	1.79	0.10	0.08	0.12	0.12	0.00	0.00	0.05	60.00
Korea, North	0.16	0.15	0.15	0.15	1.39	1.33	1.33	1.33	0.22	0.20	0.20	0.20	0.00	0.00	0.00	0.00
Japan	0.14	0.15	0.16	0.16	1.70	1.57	1.68	1.68	0.24	0.24	0.26	0.26	0.00	0.00	0.02	10.17
India	11.67	11.40	10.50	10.50	0.59	1.01	0.95	0.95	6.93	11.50	10.00	10.00	0.00	0.00	-1.50	-13.04
Canada	2.20	2.18	2.88	2.88	2.90	2.97	2.85	2.85	6.37	6.46	8.20	8.20	0.00	0.00	1.74	26.88
Former Soviet Union - 12																
Russia	2.08	2.12	2.50	2.50	1.30	1.48	1.56	1.48	2.71	3.13	3.90	3.70	-0.20	-5.13	0.57	18.06
Ukraine	2.14	1.85	2.00	2.00	1.84	2.31	2.30	2.00	3.93	4.28	4.60	4.00	-0.60	-13.04	-0.28	-6.54
European Union	0.87	0.80	0.89	0.89	2.68	2.99	2.80	2.80	2.32	2.38	2.48	2.48	0.00	0.00	0.10	4.25
Southeast Asia																
Indonesia	0.44	0.43	0.42	0.42	1.32	1.31	1.29	1.29	0.58	0.57	0.54	0.54	0.00	0.00	-0.03	-4.42
Vietnam	0.09	0.10	0.11	0.11	1.57	1.57	1.57	1.57	0.15	0.16	0.17	0.17	0.00	0.00	0.01	5.10
Thailand	0.03	0.03	0.03	0.03	1.76	1.78	1.77	1.77	0.06	0.06	0.06	0.06	0.00	0.00	0.00	-3.51
Burma	0.15	0.15	0.15	0.15	1.07	1.07	1.07	1.07	0.16	0.16	0.16	0.16	0.00	0.00	0.00	0.00
Serbia	0.22	0.19	0.20	0.20	2.20	3.51	1.75	1.75	0.48	0.65	0.35	0.35	0.00	0.00	-0.30	-46.15
Mexico	0.25	0.28	0.24	0.27	1.36	1.81	1.75	1.78	0.33	0.51	0.42	0.48	0.06	14.29	-0.03	-5.88
Africa																
South Africa	0.50	0.57	0.65	0.65	1.48	2.29	1.69	1.69	0.74	1.32	1.10	1.10	0.00	0.00	-0.22	-16.41
Nigeria	0.70	0.70	0.70	0.70	0.96	0.96	0.96	0.96	0.68	0.68	0.68	0.68	0.00	0.00	0.00	0.00
Zambia	0.11	0.14	0.23	0.23	2.02	1.94	1.56	1.56	0.23	0.27	0.35	0.35	0.00	0.00	0.08	30.97
Uganda	0.05	0.05	0.05	0.05	0.60	0.60	0.60	0.60	0.03	0.03	0.03	0.03	0.00	0.00	0.00	0.00
Middle East																
Iran	0.08	0.08	0.08	0.08	2.44	2.44	2.44	2.44	0.20	0.20	0.20	0.20	0.00	0.00	0.00	0.00
Turkey	0.03	0.03	0.02	0.02	3.70	3.33	3.86	3.86	0.10	0.10	0.09	0.09	0.00	0.00	-0.02	-15.00
Others	0.32	0.33	0.33	0.33	1.86	1.84	1.86	1.86	0.59	0.60	0.62	0.62	0.00	0.00	0.02	3.50

World and Selected Countries and Regions

Table 12 Cottonseed Area, Yield, and Production

Country / Region	Area (Million hectares)				Yield (Metric tons per hectare)				Production (Million metric tons)				Change in Production			
	2015/16	Prel.		2017/18 Proj.		2015/16	Prel.		2017/18 Proj.		2015/16	Prel.		2017/18 Proj.		
		2016/17	Sep	Oct	2016/17		Sep	Oct	2016/17	Sep		Oct	MMT	Percent	MMT	Percent
World	29.98	28.92	32.26	32.45	1.19	1.35	1.37	1.37	35.78	39.02	44.15	44.30	0.16	0.35	5.28	13.53
United States	3.27	3.85	4.66	4.62	1.12	1.27	1.34	1.31	3.67	4.87	6.23	6.06	-0.18	-2.81	1.19	24.33
Total Foreign	26.71	25.07	27.61	27.83	1.20	1.36	1.37	1.37	32.12	34.15	37.92	38.25	0.33	0.87	4.09	11.99
South Asia																
India	12.30	10.85	12.20	12.20	0.89	1.06	1.04	1.04	11.00	11.46	12.74	12.74	0.00	0.00	1.27	11.11
Pakistan	2.80	2.40	2.80	2.80	1.09	1.40	1.43	1.43	3.05	3.35	4.00	4.00	0.00	0.00	0.65	19.40
China	3.05	2.90	3.13	3.13	2.82	3.03	3.07	3.07	8.60	8.80	9.60	9.60	0.00	0.00	0.80	9.09
Former Soviet Union - 12																
Uzbekistan	1.29	1.18	1.18	1.18	1.16	1.19	1.16	1.16	1.49	1.40	1.37	1.37	0.00	0.00	-0.03	-2.00
Turkmenistan	0.50	0.55	0.55	0.55	1.14	0.95	1.08	1.08	0.57	0.52	0.59	0.59	0.00	0.00	0.07	13.71
Tajikistan	0.15	0.17	0.17	0.17	1.08	0.93	0.90	0.90	0.16	0.15	0.15	0.15	0.00	0.00	0.00	0.00
Kazakhstan	0.10	0.12	0.14	0.13	0.80	0.97	0.80	0.86	0.08	0.11	0.11	0.11	0.00	0.00	0.00	-3.57
South America																
Brazil	0.96	0.94	1.05	1.10	2.03	2.41	2.33	2.35	1.94	2.27	2.45	2.59	0.14	5.71	0.32	14.15
Argentina	0.38	0.24	0.30	0.45	0.81	1.16	0.86	0.86	0.31	0.28	0.26	0.39	0.13	49.42	0.11	39.21
Middle East																
Turkey	0.37	0.40	0.46	0.46	2.35	2.63	2.72	2.72	0.87	1.05	1.25	1.25	0.00	0.00	0.20	19.05
Syria	0.04	0.04	0.04	0.04	1.60	2.00	1.86	1.86	0.06	0.08	0.07	0.07	0.00	0.00	-0.02	-18.75
Iran	0.10	0.10	0.10	0.10	0.98	0.98	0.90	0.90	0.10	0.10	0.09	0.09	0.00	0.00	-0.01	-8.16
Australia	0.31	0.58	0.48	0.48	2.82	2.24	3.23	3.23	0.88	1.30	1.55	1.55	0.00	0.00	0.25	19.23
European Union	0.30	0.26	0.29	0.31	1.37	1.58	1.51	1.51	0.41	0.42	0.43	0.47	0.04	8.99	0.06	13.70
Africa																
Burkina	0.66	0.70	0.76	0.76	0.47	0.51	0.51	0.51	0.31	0.36	0.39	0.39	0.00	0.00	0.03	7.80
Mali	0.55	0.66	0.70	0.70	0.51	0.53	0.53	0.53	0.28	0.35	0.37	0.37	0.00	0.00	0.02	6.67
Cameroon	0.22	0.23	0.23	0.23	1.17	1.04	1.11	1.11	0.26	0.24	0.25	0.25	0.00	0.00	0.02	6.38
Cote d'Ivoire	0.40	0.35	0.36	0.36	0.41	0.48	0.52	0.52	0.17	0.17	0.19	0.19	0.00	0.00	0.02	11.98
Benin	0.30	0.42	0.45	0.45	0.55	0.66	0.62	0.62	0.17	0.27	0.28	0.28	0.00	0.00	0.01	3.31
Tanzania	0.40	0.35	0.35	0.35	0.30	0.35	0.31	0.31	0.12	0.12	0.11	0.11	0.00	0.00	-0.01	-9.84
Egypt	0.10	0.06	0.11	0.11	0.98	0.96	0.97	0.97	0.10	0.05	0.11	0.11	0.00	0.00	0.05	101.89
Nigeria	0.26	0.28	0.27	0.27	0.38	0.36	0.38	0.38	0.10	0.10	0.10	0.10	0.00	0.00	0.00	3.03
Uganda	0.07	0.07	0.08	0.08	1.23	1.49	1.45	1.45	0.08	0.11	0.11	0.11	0.00	0.00	0.00	0.00
Zimbabwe	0.10	0.13	0.20	0.20	0.23	0.38	0.43	0.43	0.02	0.05	0.09	0.09	0.00	0.00	0.04	73.47
Sudan	0.05	0.07	0.07	0.07	1.54	1.24	1.24	1.24	0.08	0.09	0.09	0.09	0.00	0.00	0.00	0.00
Mexico	0.13	0.10	0.19	0.20	2.41	2.51	2.54	2.52	0.32	0.26	0.47	0.49	0.02	4.90	0.23	89.96
Burma	0.24	0.24	0.25	0.25	1.23	1.17	1.24	1.24	0.30	0.29	0.31	0.31	0.00	0.00	0.03	8.77
Others	0.60	0.72	0.74	0.74	0.54	0.59	0.55	0.55	0.32	0.43	0.41	0.41	0.00	0.00	-0.02	-3.76

World and Selected Countries and Regions

Table 13 Peanut Area, Yield, and Production

Country / Region	Area (Million hectares)				Yield (Metric tons per hectare)				Production (Million metric tons)				Change in Production			
	2015/16	Prel.	2017/18 Proj.		2015/16	Prel.	2017/18 Proj.		2015/16	Prel.	2017/18 Proj.		From last month		From last year	
		2016/17	Sep	Oct		2016/17	Sep	Oct		2016/17	Sep	Oct	MMT	Percent	MMT	Percent
World	24.76	25.34	25.16	25.16	1.63	1.68	1.70	1.71	40.40	42.63	42.90	43.00	0.10	0.24	0.37	0.86
United States	0.63	0.62	0.74	0.74	4.31	4.07	4.77	4.77	2.72	2.53	3.53	3.53	0.00	0.06	1.00	39.49
Total Foreign	24.13	24.72	24.42	24.42	1.56	1.62	1.61	1.62	37.68	40.10	39.37	39.47	0.10	0.25	-0.63	-1.58
China	4.62	4.75	4.85	4.85	3.56	3.58	3.59	3.61	16.44	17.00	17.40	17.50	0.10	0.57	0.50	2.94
Africa																
Nigeria	2.50	2.50	2.50	2.50	1.20	1.20	1.20	1.20	3.00	3.00	3.00	3.00	0.00	0.00	0.00	0.00
Sudan	2.18	1.80	1.80	1.80	0.86	0.78	0.78	0.78	1.87	1.40	1.40	1.40	0.00	0.00	0.00	0.00
Senegal	1.14	1.15	1.10	1.10	0.93	0.82	0.91	0.91	1.05	0.95	1.00	1.00	0.00	0.00	0.06	5.82
Cameroon	0.40	0.40	0.40	0.40	1.38	1.38	1.38	1.38	0.55	0.55	0.55	0.55	0.00	0.00	0.00	0.00
Ghana	0.40	0.40	0.40	0.40	1.10	1.10	1.10	1.10	0.44	0.44	0.44	0.44	0.00	0.00	0.00	0.00
Chad	0.50	0.50	0.50	0.50	0.80	0.80	0.80	0.80	0.40	0.40	0.40	0.40	0.00	0.00	0.00	0.00
Malawi	0.37	0.37	0.37	0.37	0.79	0.71	0.71	0.71	0.29	0.26	0.26	0.26	0.00	0.00	0.00	0.00
Congo (Kinshasa)	0.48	0.48	0.48	0.48	0.78	0.78	0.78	0.78	0.37	0.37	0.37	0.37	0.00	0.00	0.00	0.00
Niger	0.74	0.74	0.74	0.74	0.47	0.47	0.47	0.47	0.35	0.35	0.35	0.35	0.00	0.00	0.00	0.00
Mali	0.38	0.38	0.38	0.38	1.39	0.87	0.87	0.87	0.52	0.33	0.33	0.33	0.00	0.00	0.00	0.00
Uganda	0.43	0.43	0.43	0.43	0.71	0.71	0.71	0.71	0.30	0.30	0.30	0.30	0.00	0.00	0.00	0.00
Burkina	0.45	0.45	0.45	0.45	0.78	0.78	0.78	0.78	0.35	0.35	0.35	0.35	0.00	0.00	0.00	0.00
Guinea	0.30	0.30	0.30	0.30	1.17	1.20	1.20	1.20	0.35	0.36	0.36	0.36	0.00	0.00	0.00	0.00
Egypt	0.06	0.06	0.06	0.06	3.20	3.20	3.20	3.20	0.21	0.21	0.21	0.21	0.00	0.00	0.00	0.00
Central African Republic	0.10	0.10	0.10	0.10	1.50	1.50	1.50	1.50	0.15	0.15	0.15	0.15	0.00	0.00	0.00	0.00
South Africa	0.02	0.06	0.06	0.06	1.04	2.20	1.82	1.82	0.02	0.12	0.10	0.10	0.00	0.00	-0.02	-18.70
Mozambique	0.29	0.29	0.29	0.29	0.38	0.38	0.38	0.38	0.11	0.11	0.11	0.11	0.00	0.00	0.00	0.00
Cote d'Ivoire	0.08	0.08	0.08	0.08	1.13	1.13	1.13	1.13	0.09	0.09	0.09	0.09	0.00	0.00	0.00	0.00
Benin	0.16	0.15	0.15	0.15	0.85	0.93	0.93	0.93	0.13	0.14	0.14	0.14	0.00	0.00	0.00	0.00
South Asia																
India	4.55	5.30	5.00	5.00	0.98	1.26	1.10	1.10	4.47	6.70	5.50	5.50	0.00	0.00	-1.20	-17.91
Pakistan	0.11	0.09	0.10	0.10	0.90	0.94	0.95	0.95	0.10	0.09	0.09	0.09	0.00	0.00	0.01	5.88
Southeast Asia																
Indonesia	0.62	0.60	0.59	0.59	1.84	1.87	1.86	1.86	1.13	1.12	1.10	1.10	0.00	0.00	-0.02	-1.79
Burma	0.89	0.89	0.89	0.89	1.55	1.55	1.55	1.55	1.38	1.38	1.38	1.38	0.00	0.00	0.00	0.00
Vietnam	0.19	0.20	0.20	0.20	2.31	2.31	2.33	2.33	0.44	0.45	0.47	0.47	0.00	0.00	0.01	3.10
Thailand	0.02	0.02	0.02	0.02	1.63	1.67	1.67	1.67	0.04	0.04	0.04	0.04	0.00	0.00	0.00	0.00
South America																
Argentina	0.29	0.35	0.35	0.35	3.21	3.30	3.36	3.36	0.93	1.16	1.16	1.16	0.00	0.00	0.00	0.00
Brazil	0.12	0.13	0.13	0.13	3.38	3.63	3.46	3.46	0.41	0.46	0.46	0.46	0.00	0.00	0.00	-0.87
Mexico	0.07	0.06	0.06	0.06	1.55	1.70	1.70	1.70	0.10	0.10	0.10	0.10	0.00	0.00	0.00	0.00
Others	1.70	1.72	1.68	1.68	1.00	1.01	1.06	1.06	1.69	1.74	1.78	1.78	0.00	0.00	0.04	2.36

Table 14 Sunflowerseed Area, Yield, and Production

Country / Region	Area (Million hectares)				Yield (Metric tons per hectare)				Production (Million metric tons)				Change in Production			
	2015/16	Prel.		2017/18 Proj.		2015/16	Prel.		2017/18 Proj.		2015/16	Prel.		2017/18 Proj.		
		2016/17	Sep	Oct	2016/17		Sep	Oct	2016/17	Sep		Oct	MMT	Percent	MMT	Percent
World	23.29	25.24	25.72	25.78	1.73	1.89	1.84	1.80	40.30	47.60	47.40	46.35	-1.05	-2.22	-1.26	-2.64
United States	0.73	0.62	0.49	0.55	1.82	1.94	1.79	1.50	1.33	1.20	0.88	0.82	-0.06	-6.49	-0.38	-31.75
Total Foreign	22.57	24.62	25.23	25.23	1.73	1.88	1.84	1.80	38.97	46.40	46.52	45.53	-0.99	-2.14	-0.87	-1.88
Former Soviet Union - 12																
Russia	6.45	7.18	7.50	7.50	1.42	1.51	1.53	1.47	9.17	10.86	11.50	11.00	-0.50	-4.35	0.14	1.31
Ukraine	5.50	6.40	6.40	6.40	2.16	2.38	2.19	2.11	11.90	15.20	14.00	13.50	-0.50	-3.57	-1.70	-11.18
Kazakhstan	0.70	0.81	0.80	0.80	0.76	0.94	0.94	0.94	0.53	0.76	0.75	0.75	0.00	0.00	-0.01	-0.66
European Union	4.17	4.15	4.18	4.18	1.85	2.06	2.03	2.03	7.72	8.57	8.50	8.50	0.00	0.00	-0.07	-0.85
South America																
Argentina	1.27	1.72	1.90	1.90	2.13	1.98	2.11	2.11	2.70	3.40	4.00	4.00	0.00	0.00	0.60	17.65
Uruguay	0.04	0.04	0.05	0.05	1.50	1.50	1.56	1.56	0.06	0.07	0.08	0.08	0.00	0.00	0.01	18.18
Bolivia	0.15	0.10	0.13	0.13	0.89	0.67	0.80	0.80	0.13	0.06	0.11	0.11	0.00	0.00	0.04	64.06
Brazil	0.05	0.06	0.08	0.08	1.21	1.66	1.47	1.47	0.06	0.10	0.11	0.11	0.00	0.00	0.01	8.74
Paraguay	0.05	0.03	0.03	0.03	1.64	1.60	1.66	1.66	0.07	0.05	0.05	0.05	0.00	0.00	0.01	10.42
China	1.04	1.08	1.10	1.10	2.60	2.59	2.59	2.59	2.70	2.80	2.85	2.85	0.00	0.00	0.05	1.79
South Asia																
India	0.48	0.38	0.32	0.32	0.66	0.72	0.81	0.81	0.32	0.28	0.26	0.26	0.00	0.00	-0.02	-7.27
Pakistan	0.09	0.07	0.07	0.07	1.06	1.07	1.07	1.07	0.09	0.08	0.08	0.08	0.00	0.00	0.00	0.00
Middle East																
Turkey	0.55	0.60	0.65	0.65	2.00	2.20	2.46	2.46	1.10	1.32	1.60	1.60	0.00	0.00	0.28	21.21
Iran	0.07	0.07	0.07	0.07	1.29	1.29	1.29	1.29	0.09	0.09	0.09	0.09	0.00	0.00	0.00	0.00
Israel	0.01	0.01	0.01	0.01	1.60	1.60	1.60	1.60	0.02	0.02	0.02	0.02	0.00	0.00	0.00	0.00
Africa																
Egypt	0.01	0.01	0.01	0.01	2.43	2.43	2.38	2.38	0.02	0.02	0.02	0.02	0.00	0.00	0.00	11.76
Morocco	0.02	0.02	0.02	0.02	1.29	1.29	1.29	1.29	0.03	0.03	0.03	0.03	0.00	0.00	0.00	0.00
South Africa	0.72	0.64	0.70	0.70	1.05	1.38	1.33	1.33	0.76	0.88	0.93	0.93	0.00	0.00	0.06	6.29
Burma	0.60	0.60	0.60	0.60	0.65	0.65	0.65	0.65	0.39	0.39	0.39	0.39	0.00	0.00	0.00	0.00
Canada	0.04	0.03	0.03	0.03	1.92	1.82	1.88	1.88	0.07	0.05	0.05	0.05	0.00	0.00	0.00	-7.84
Australia	0.02	0.03	0.03	0.04	1.09	1.10	1.13	1.08	0.03	0.03	0.03	0.04	0.01	17.65	0.01	25.00
Others	0.55	0.61	0.56	0.56	1.87	2.25	1.95	1.95	1.02	1.37	1.09	1.09	0.00	0.00	-0.28	-20.13

World and Selected Countries and Regions

Table 15 Rapeseed Area, Yield, and Production

Country / Region	Area (Million hectares)				Yield (Metric tons per hectare)				Production (Million metric tons)				Change in Production			
	Prel.		2017/18 Proj.		Prel.		2017/18 Proj.		Prel.		2017/18 Proj.		From last month		From last year	
	2015/16	2016/17	Sep	Oct	2015/16	2016/17	Sep	Oct	2015/16	2016/17	Sep	Oct	MMT	Percent	MMT	Percent
World	33.79	33.75	36.43	36.40	2.07	2.08	1.98	1.97	69.88	70.35	72.14	71.88	-0.26	-0.36	1.53	2.17
United States	0.69	0.69	0.86	0.83	1.88	2.04	1.80	1.55	1.31	1.41	1.54	1.28	-0.26	-16.86	-0.13	-9.01
Total Foreign	33.09	33.06	35.57	35.57	2.07	2.09	1.98	1.98	68.57	68.94	70.59	70.59	0.00	0.00	1.66	2.40
European Union	6.51	6.55	6.75	6.75	3.38	3.13	3.25	3.26	22.00	20.54	21.95	22.00	0.05	0.23	1.46	7.09
Canada	8.32	8.12	9.24	9.24	2.21	2.41	2.15	2.15	18.38	19.60	19.90	19.90	0.00	0.00	0.30	1.53
China	7.53	7.00	6.80	6.80	1.98	1.93	1.93	1.93	14.93	13.50	13.10	13.10	0.00	0.00	-0.40	-2.96
South Asia																
India	5.75	6.50	7.20	7.20	1.03	1.09	1.00	1.00	5.92	7.09	7.20	7.20	0.00	0.00	0.11	1.54
Pakistan	0.23	0.21	0.20	0.20	0.96	0.95	0.95	0.95	0.22	0.20	0.19	0.19	0.00	0.00	-0.01	-5.00
Bangladesh	0.25	0.25	0.25	0.25	0.92	0.92	0.92	0.92	0.23	0.23	0.23	0.23	0.00	0.00	0.00	0.00
Former Soviet Union - 12																
Russia	0.90	0.91	0.95	0.95	1.12	1.10	1.32	1.47	1.00	1.00	1.25	1.40	0.15	12.00	0.40	40.42
Ukraine	0.68	0.45	0.75	0.75	2.58	2.78	2.80	2.80	1.74	1.25	2.10	2.10	0.00	0.00	0.85	68.00
Belarus	0.17	0.17	0.17	0.17	1.82	1.82	1.82	1.82	0.30	0.30	0.30	0.30	0.00	0.00	0.00	0.00
Kazakhstan	0.22	0.16	0.23	0.23	0.62	1.06	1.00	1.00	0.14	0.17	0.23	0.23	0.00	0.00	0.06	32.35
Australia	2.09	2.32	2.60	2.60	1.33	1.78	1.23	1.15	2.78	4.14	3.20	3.00	-0.20	-6.25	-1.14	-27.45
South America																
Chile	0.05	0.05	0.05	0.05	4.00	3.98	4.14	4.14	0.21	0.18	0.21	0.21	0.00	0.00	0.02	13.11
Paraguay	0.09	0.07	0.07	0.07	1.00	1.20	1.10	1.10	0.09	0.08	0.08	0.08	0.00	0.00	0.00	-4.76
Switzerland	0.02	0.02	0.02	0.02	3.14	3.14	3.14	3.14	0.07	0.07	0.07	0.07	0.00	0.00	0.00	0.00
Ethiopia	0.05	0.05	0.05	0.05	1.56	1.56	1.56	1.56	0.07	0.07	0.07	0.07	0.00	0.00	0.00	0.00
Others	0.25	0.25	0.25	0.25	2.05	2.10	2.07	2.07	0.50	0.52	0.52	0.52	0.00	0.00	0.01	1.36

World and Selected Countries and Regions

Table 16 Copra, Palm Kernel, and Palm Oil Production

Country / Region	Production (Million metric tons)				Change in Production			
	2015/16	Prel.	2017/18 Proj.		From last month		From last year	
		2016/17	Sep	Oct	MMT	Percent	MMT	Percent
Oilseed, Copra								
Philippines	2.10	2.20	2.30	2.30	0.00	0.00	0.10	4.55
Indonesia	1.59	1.58	1.57	1.57	0.00	0.00	-0.01	-0.63
India	0.72	0.72	0.75	0.75	0.00	0.00	0.03	4.17
Vietnam	0.26	0.27	0.27	0.27	0.00	0.00	0.00	0.00
Mexico	0.21	0.21	0.21	0.21	0.00	0.00	0.00	0.00
Papua New Guinea	0.09	0.10	0.10	0.10	0.00	0.00	0.00	0.00
Thailand	0.07	0.07	0.07	0.07	0.00	0.00	0.00	0.00
Sri Lanka	0.07	0.07	0.07	0.07	0.00	0.00	0.00	0.00
Solomon Islands	0.03	0.03	0.03	0.03	0.00	0.00	0.00	0.00
Cote d'Ivoire	0.03	0.03	0.03	0.03	0.00	0.00	0.00	0.00
World	5.32	5.41	5.54	5.54	0.00	0.00	0.13	2.40
Oilseed, Palm Kernel								
Indonesia	8.50	9.00	9.50	9.50	0.00	0.00	0.50	5.56
Malaysia	4.50	4.78	5.40	5.40	0.00	0.00	0.62	12.97
Thailand	0.68	0.74	0.82	0.82	0.00	0.00	0.08	10.81
Nigeria	0.73	0.73	0.73	0.73	0.00	0.00	0.00	0.00
Colombia	0.27	0.24	0.28	0.28	0.00	0.00	0.04	16.67
Guatemala	0.13	0.15	0.15	0.15	0.00	0.00	0.00	0.00
Papua New Guinea	0.15	0.13	0.14	0.14	0.00	0.00	0.01	7.69
Honduras	0.12	0.12	0.12	0.12	0.00	0.00	0.00	0.00
Ecuador	0.11	0.11	0.12	0.12	0.00	0.00	0.01	9.09
Cameroon	0.11	0.11	0.11	0.11	0.00	0.00	0.00	0.00
World	15.96	16.80	18.04	18.04	0.00	0.00	1.24	7.38
Oil, Palm								
Indonesia	32.00	34.00	36.00	36.00	0.00	0.00	2.00	5.88
Malaysia	17.70	18.86	21.00	21.00	0.00	0.00	2.14	11.35
Thailand	1.80	2.00	2.20	2.20	0.00	0.00	0.20	10.00
Colombia	1.28	1.15	1.32	1.32	0.00	0.00	0.17	14.78
Nigeria	0.97	0.97	0.97	0.97	0.00	0.00	0.00	0.00
Guatemala	0.63	0.74	0.74	0.74	0.00	0.00	0.00	0.00
Ecuador	0.52	0.56	0.58	0.58	0.00	0.00	0.01	1.79
Honduras	0.49	0.55	0.55	0.55	0.00	0.00	0.00	0.00
Papua New Guinea	0.58	0.52	0.53	0.53	0.00	0.00	0.01	1.92
Ghana	0.50	0.52	0.52	0.52	0.00	0.00	0.00	0.00
World	58.83	62.29	66.86	66.87	0.00	0.00	4.57	7.34

World and Selected Countries and Regions

Table 17 Cotton Area, Yield, and Production

Country / Region	Area (Million hectares)				Yield (Kilograms per hectare)				Production (Million 480 lb. bales)				Change in Production			
	2015/16	Prel.	2017/18 Proj.		2015/16	Prel.	2017/18 Proj.		2015/16	Prel.	2017/18 Proj.		From last month		From last year	
		2016/17	Sep	Oct		2016/17	Sep	Oct		2016/17	Sep	Oct	MBales	Percent	MBales	Percent
World	30.64	29.58	32.98	33.10	683	785	797	795	96.17	106.61	120.75	120.86	0.11	0.09	14.25	13.37
United States	3.27	3.85	4.66	4.62	859	972	1,017	996	12.89	17.17	21.76	21.12	-0.64	-2.96	3.95	22.98
Total Foreign	27.37	25.73	28.32	28.49	663	757	761	762	83.29	89.44	98.99	99.75	0.76	0.76	10.31	11.52
South Asia																
India	12.30	10.85	12.20	12.20	458	542	535	535	25.90	27.00	30.00	30.00	0.00	0.00	3.00	11.11
Pakistan	2.80	2.40	2.80	2.80	544	699	711	711	7.00	7.70	9.15	9.15	0.00	0.00	1.45	18.83
China	3.05	2.90	3.13	3.13	1,570	1,708	1,707	1,707	22.00	22.75	24.50	24.50	0.00	0.00	1.75	7.69
South America																
Brazil	0.96	0.94	1.05	1.10	1,345	1,621	1,555	1,544	5.90	7.00	7.50	7.80	0.30	4.00	0.80	11.43
Argentina	0.38	0.24	0.30	0.45	479	680	508	508	0.83	0.75	0.70	1.05	0.35	50.00	0.30	40.00
Paraguay	0.01	0.01	0.01	0.01	419	416	416	416	0.03	0.02	0.02	0.02	0.00	0.00	0.00	0.00
Africa																
Burkina	0.66	0.70	0.76	0.76	371	404	404	404	1.13	1.30	1.40	1.40	0.00	0.00	0.10	7.69
Mali	0.55	0.66	0.70	0.70	390	406	404	404	0.98	1.22	1.30	1.30	0.00	0.00	0.08	6.56
Cote d'Ivoire	0.40	0.35	0.36	0.36	333	394	421	421	0.62	0.63	0.70	0.70	0.00	0.00	0.08	12.00
Benin	0.30	0.42	0.45	0.45	363	433	423	423	0.50	0.83	0.88	0.88	0.00	0.00	0.05	6.06
Egypt	0.10	0.06	0.11	0.11	697	673	693	693	0.32	0.17	0.35	0.35	0.00	0.00	0.18	105.88
Cameroon	0.22	0.23	0.23	0.23	510	455	484	484	0.52	0.47	0.50	0.50	0.00	0.00	0.03	6.38
Tanzania	0.40	0.35	0.35	0.35	147	174	156	156	0.27	0.28	0.25	0.25	0.00	0.00	-0.03	-10.71
Nigeria	0.26	0.28	0.27	0.27	193	182	190	190	0.23	0.23	0.24	0.24	0.00	0.00	0.01	2.17
Zimbabwe	0.10	0.13	0.20	0.20	131	218	245	245	0.06	0.13	0.23	0.23	0.00	0.00	0.10	73.08
Ethiopia	0.07	0.08	0.08	0.08	586	544	544	544	0.18	0.20	0.20	0.20	0.00	0.00	0.00	0.00
Former Soviet Union - 12																
Uzbekistan	1.29	1.18	1.18	1.18	644	687	683	683	3.80	3.73	3.70	3.70	0.00	0.00	-0.03	-0.67
Turkmenistan	0.50	0.55	0.55	0.55	631	529	559	559	1.45	1.33	1.40	1.40	0.00	0.00	0.08	5.66
Tajikistan	0.15	0.17	0.17	0.17	599	515	532	532	0.41	0.39	0.42	0.42	0.00	0.00	0.03	6.41
Kazakhstan	0.10	0.12	0.14	0.13	440	568	524	523	0.20	0.30	0.33	0.30	-0.03	-7.69	0.00	0.00
Middle East																
Turkey	0.37	0.40	0.46	0.46	1,559	1,742	1,799	1,799	2.65	3.20	3.80	3.80	0.00	0.00	0.60	18.75
Syria	0.04	0.04	0.04	0.04	1,034	1,089	995	995	0.19	0.20	0.16	0.16	0.00	0.00	-0.04	-20.00
Iran	0.10	0.10	0.10	0.10	599	653	610	610	0.28	0.30	0.28	0.28	0.00	0.00	-0.02	-6.67
Australia	0.31	0.58	0.48	0.48	1,989	1,577	2,268	2,268	2.85	4.20	5.00	5.00	0.00	0.00	0.80	19.05
Mexico	0.13	0.10	0.19	0.20	1,544	1,615	1,624	1,619	0.94	0.76	1.38	1.45	0.07	5.07	0.69	89.79
Burma	0.24	0.24	0.25	0.25	651	634	634	634	0.72	0.71	0.73	0.73	0.00	0.00	0.02	2.11
Others	1.60	1.69	1.79	1.76	459	472	473	490	3.37	3.66	3.90	3.96	0.06	1.54	0.31	8.37

World and Selected Countries and Regions

TABLE 18

Note: Tables on pages 35-37 present a record of the October projection and the final Estimate. Using world wheat production as an example, the "root mean square error" means that chances are 2 out of 3 that the current forecast will not be above or below the final estimate by more than 1.7 percent. Chances are 9 out of 10 (90% confidence level) that the difference will not exceed 2.9 percent. The average difference between the October projection and the final estimate is 7.5 million tons, ranging from 1.2 million to 26.7 million tons. The October projection has been below the estimate 26 times and above 9 times.

RELIABILITY OF PRODUCTION PROJECTIONS 1/

COMMODITY AND REGION	Root mean square error	90 percent confidence interval	Difference between forecast and final estimate				
			Average	Smallest	Largest	Years	
						Below final	Above final
	Percent		---Million metric tons---				
WHEAT							
World	1.7	2.9	7.5	1.2	26.7	26	9
U.S.	0.5	0.8	0.2	0.0	1.2	12	16
Foreign	1.9	3.3	7.5	1.4	26.8	26	9
COARSE GRAINS 2/							
World	1.9	3.2	15.0	0.8	49.7	28	7
U.S.	2.7	4.6	4.4	0.1	17.9	21	14
Foreign	2.4	4.0	13.9	0.6	47.0	29	6
RICE (Milled)							
World	2.3	3.9	6.2	0.0	20.9	27	7
U.S.	3.3	5.7	0.2	0.0	0.5	20	15
Foreign	2.3	4.0	6.2	0.1	21.0	27	8
SOYBEANS							
World	4.5	7.6	6.5	0.1	28.7	19	16
U.S.	2.9	4.9	1.5	0.0	3.8	16	19
Foreign	7.3	12.4	6.6	0.0	28.1	18	17
COTTON			---Million 480-lb. bales---				
World	4.6	7.8	2.9	0.0	10.9	19	15
U.S.	4.6	7.7	0.6	0.0	1.7	22	13
Foreign	5.3	9.0	2.7	0.0	10.5	18	16
UNITED STATES			-----Million bushels-----				
CORN	2.9	4.8	172	5	618	20	15
SORGHUM	4.9	8.4	20	1	71	21	14
BARLEY	1.5	2.6	4	0	24	9	15
OATS	2.6	4.4	2	0	18	6	11

1/ Marketing years 1981/82 through 2016/17 for grains, soybeans, and cotton. Final for grains, soybeans, and cotton is defined as the first November estimate following the marketing year for 1981/82 through 2015/16, and for 2016/17 the last month's estimate.

2/ Includes corn, sorghum, barley, oats, rye, millet, and mixed grain

October 2017

Office of Global Analysis, FAS, USDA