



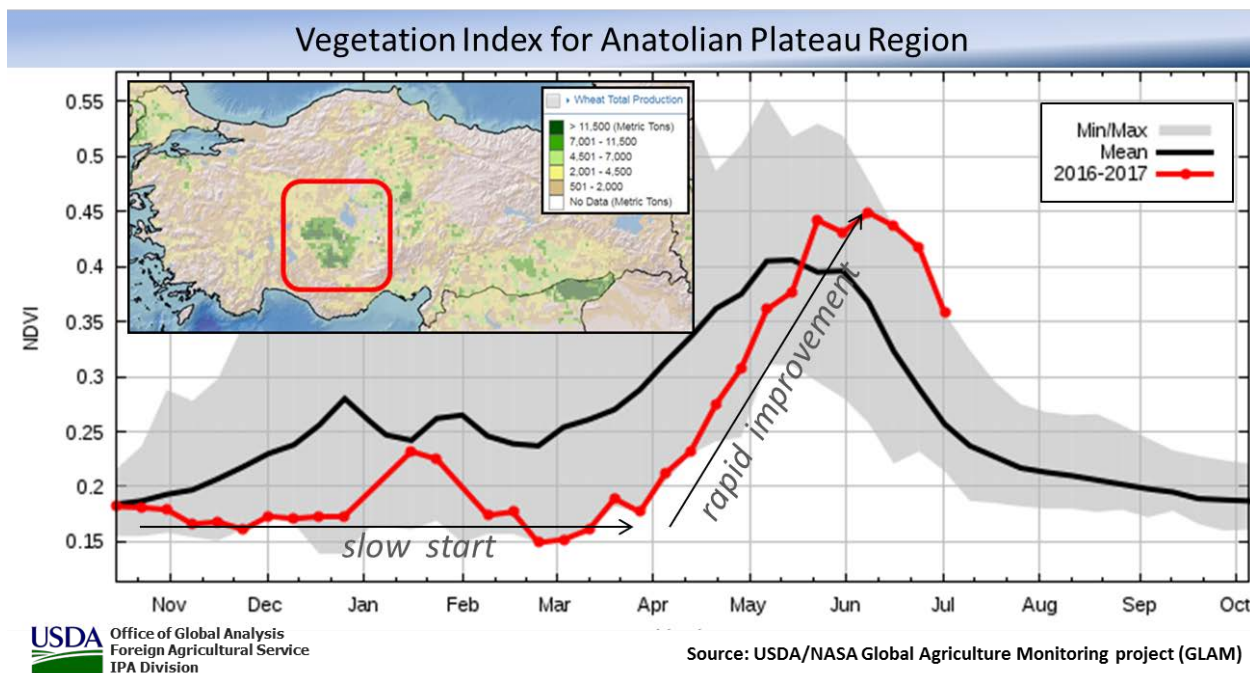
United States
Department of
Agriculture

Foreign
Agricultural
Service

Circular Series
WAP 07-17
July 2017

World Agricultural Production

Turkey Wheat and Barley: Abundant Soil Moisture Supports Late Season Improvement



Fall dryness over the Anatolian Plateau delayed the winter-grain planting campaign and reduced the time available for crop establishment. Favorable snow cover protected winter crops against frost damage, and above-average spring precipitation replenished soil moisture reserves which benefited the crops as they resumed spring growth. As a result, the winter crops were able to recover from the dry fall.

Turkey wheat production for 2017/18 is estimated at 19.5 million metric tons (mmt), up 1.5 mmt from last month and up 2.3 mmt from last year. Harvested area is estimated at 7.8 million hectares, unchanged from last month. Yield is forecast at 2.50 tons per hectare, 8 percent above last month and 13 percent above last year. The 2017/18 winter-wheat crop is two to three weeks behind normal growth. Harvest typically begins in early July and is largely complete by the end of August.

Barley production is estimated at 7.0 mmt, up 1.5 mmt from last month and up 2.3 mmt from last year. Harvested area is estimated at 3.4 million hectares with no change from last month or last

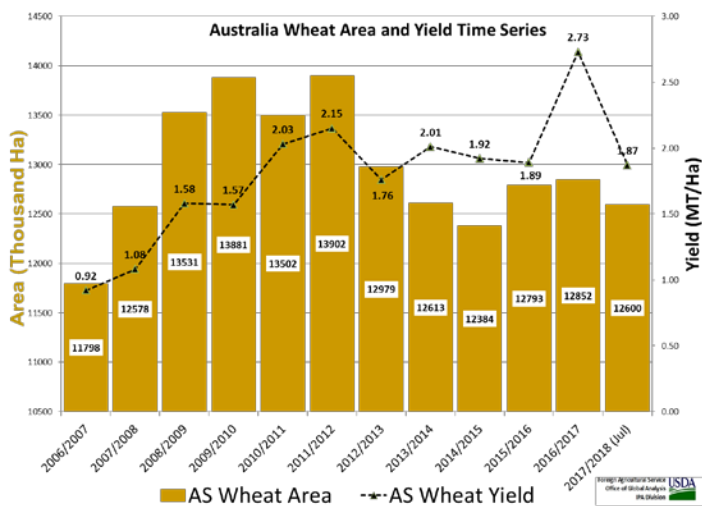
Approved by the World Agricultural Outlook Board

year. Yield is forecast at 2.06 tons per hectare, 27 percent above last month and 47 percent above last year. (For more information, please contact William.Baker@fas.usda.gov).

Australia Winter Crops: Lower Forecast for Wheat and Rapeseed Production

Persistent dryness and a current subsoil moisture deficit in a major portion of Australia’s winter crop region contributed to a lower area, an estimated 9-percent drop in wheat yield, and an 8-percent drop in rapeseed yield from the 5-year average. Precipitation has been well below average since major sowing operations commenced in May. Winter crops are sown in May and June.

Satellite-derived vegetation indices (the normalized difference vegetation index or NDVI) indicated below-average crop health from May through June for all major winter crop producing states.

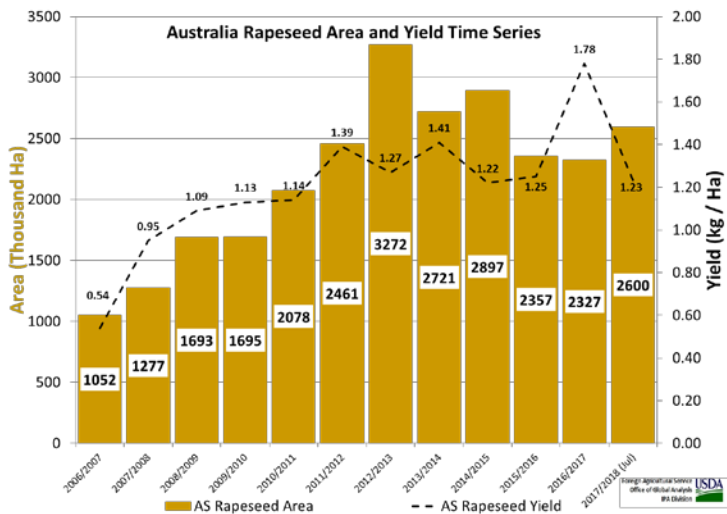


Australia wheat production for 2017/18 is forecast at 23.5 million tons, down 1.5 million or 6 percent from last month, and down 11.6 million or 33 percent from last year. The area estimate is 12.6 million hectares, down 0.2 million from last month, and down 0.25 million or 2 percent from last year. The yield forecast of 1.07 tons

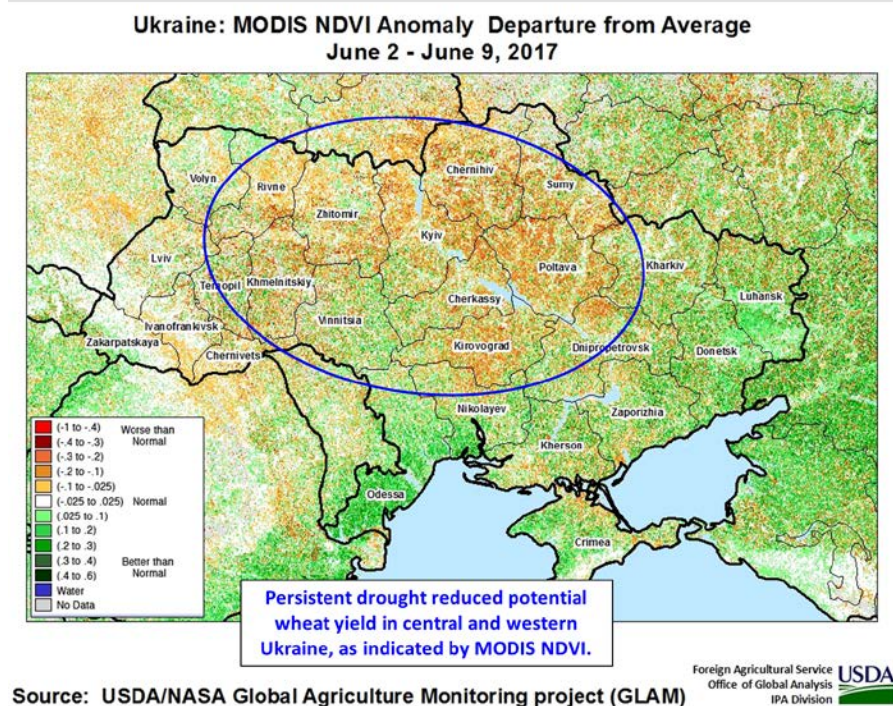
per hectare and is the third lowest in the past ten seasons. The two lowest yields occurred in the severe drought years of 2002/03 and 2006/07. Harvest begins in November and is finished by the end of December.

Australia rapeseed production for 2017/18 is forecast at 3.2 million tons, down 0.5 million or 14 percent from last month, and down 0.94 million or 23 percent from last year. The area forecast is 2.6 million hectares, down 0.2 million from last month, but up 0.27 million or 12 percent from last year. The yield forecast of 1.23 tons per hectare is the fourth lowest in the past ten seasons.

(For more information, please contact James.Crutchfield@fas.usda.gov).



Ukraine Wheat: Persistent Dryness Depletes Soil Moisture and Reduces Yield Prospects

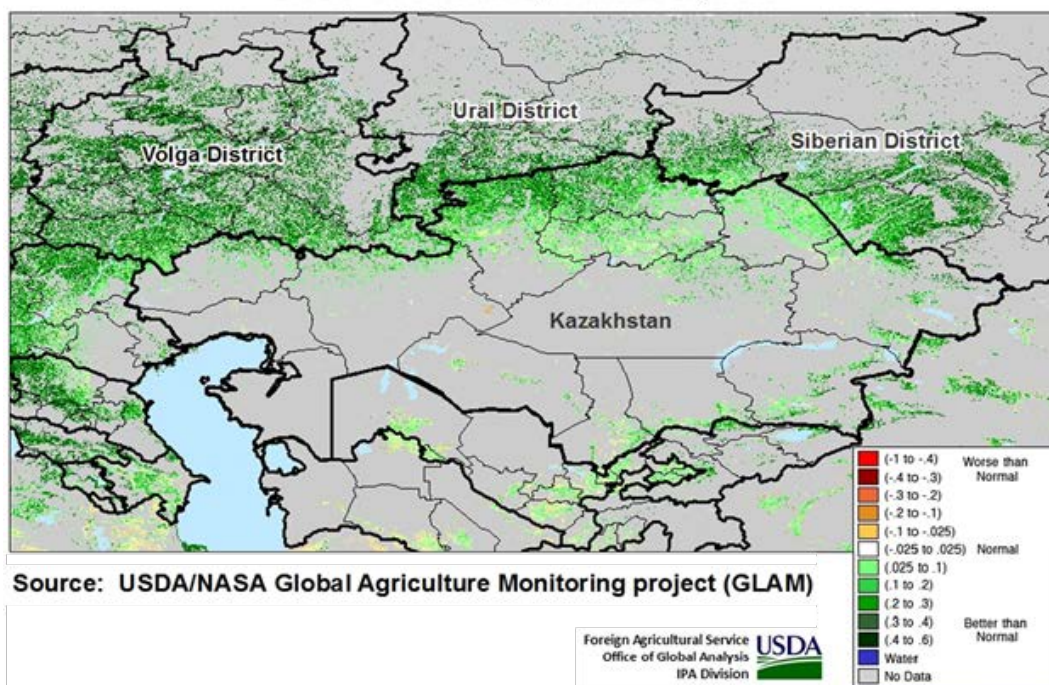


Ukraine wheat production for 2017/18 is forecast at 24.0 million metric tons, down 1.0 million from last month and down 2.8 million from last year. Harvested area is estimated at 6.60 million hectares against 6.45 million last year. Yield is estimated at 3.64 tons per hectare, down 4 percent from last month and down 13 percent from last year, but slightly above the 5-year average. The month-to-month decrease in estimated yield is attributed to severe dryness in central and western Ukraine, which hampered winter wheat development and led to a gradual depletion of the abundant early-season soil moisture. Prospects remain favorable in the Steppe Zone of southern and eastern Ukraine, which produces about 45 percent of Ukraine's wheat and where the crop benefited from generally favorable weather. Harvest has just begun in southern Ukraine; as of July 4, wheat had been harvested on 2 percent of the sown area. All USDA crop production estimates for Ukraine include estimated output from Crimea. (For more information, please contact Mark.Lindeman@fas.usda.gov).

Russia Wheat: Excellent Conditions for Both Winter and Spring Wheat

Russia wheat production for 2017/18 is forecast at 72.0 million metric tons, up 3.0 million from last month and only 0.5 million below last year's record output. Harvested area is estimated at 27.3 million hectares against 27.0 million last year. The forecast yield of 2.64 tons per hectare is up 5 percent from last month, down 2 percent from last year's record, and 14 percent above the 5-year average. Winter wheat accounts for about 50 percent of Russia's total wheat area and for about 70 percent of the production. (All USDA crop production estimates for Russia exclude estimated output from Crimea.)

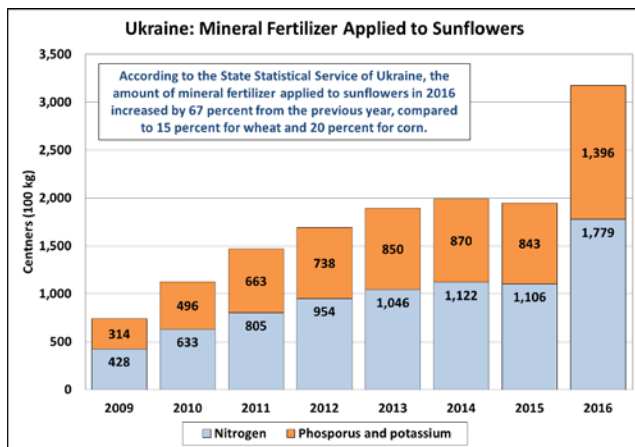
**Russia and Kazakhstan Spring Wheat Zone
MODIS NDVI Anomaly: June 18-25, 2017**



The month-to-month increase is based on continued excellent conditions for winter wheat in the Southern District and North Caucasus District (which together account for about 60 percent of the country's winter wheat output). Conditions are good in the Volga District as well (12 percent), and prospects in the Central District (27 percent) improved during June. Early-season conditions for spring wheat are excellent, as depicted by satellite-derived vegetative indices, and are consistent with the beneficial precipitation during May and June throughout the Volga, Ural, and western Siberian Districts. July is typically the key month for determining potential spring wheat yields. The harvest of winter wheat is underway in the southern Russia. Spring wheat harvest will begin in September. *(For more information, please contact Mark.Lindeman@fas.usda.gov).*

Ukraine Sunflowerseed: Yield and Production Forecast at Record Levels

USDA forecasts Ukraine 2017/18 sunflowerseed production at a record 14.5 million metric tons (mmt), up 0.5 mmt from last month and up 0.3 mmt from last year. The month-to-month increase is based on an increase in estimated area, from 6.2 to 6.4 million hectares, matching last year's record. Yield is forecast at 2.27 tons per hectare, nearly unchanged from last month but up 2 percent from last year's record and 12 percent above the 5-year average. Surface moisture was low throughout most of the planting campaign and during crop emergence and establishment. Sub-surface moisture, however, remains adequate in the main sunflower region in southern and eastern Ukraine. July and August are typically the critical months for determining potential sunflowerseed yield. (All USDA crop production estimates for Ukraine exclude estimated output from Crimea.)



Source: State Statistical Service of Ukraine



Sunflowerseed consistently is Ukraine’s most profitable crop and production has benefited from a steady and significant improvement in the level of agricultural technology. The amount of mineral fertilizer applied to sunflowers in 2016 increased by 67 percent from the previous year, compared to a 12-percent increase for wheat and 20 percent for corn. Hybrid sunflower seed imports through April (for planting of the 2017 crop) surpassed last year’s record level, and Ukraine’s imports of agrichemicals through April, including herbicides, fungicides, and insecticides, stand at a record level. (For

more information, please contact Mark.Lindeman@fas.usda.gov).

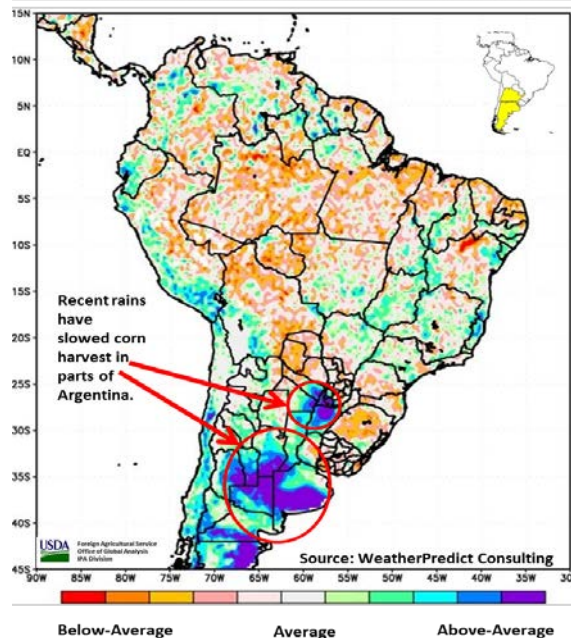
Vietnam Corn: Production Revised Higher Due to Increase in Harvested Area

Vietnam’s 2017/18 corn production is forecast at a record 5.6 million metric tons, up 12 percent from last month and 1 percent from last year. Harvested area is estimated at 1.2 million hectares, up 14 percent from last month but unchanged from last year. Yield is a record 4.67 tons per hectare. Significant upward revisions in official harvested area estimates from Vietnam’s Ministry of Agriculture and Rural Development led to an increase in production this month. The growing use of genetically modified corn varieties is underpinning a trend in yield growth for Vietnam. Despite strong domestic demand for feed grains and government programs encouraging corn expansion, farmers are not rapidly increasing acreage, although they are gradually increasing yields. (For more information, please contact Michael.Shean@fas.usda.gov).

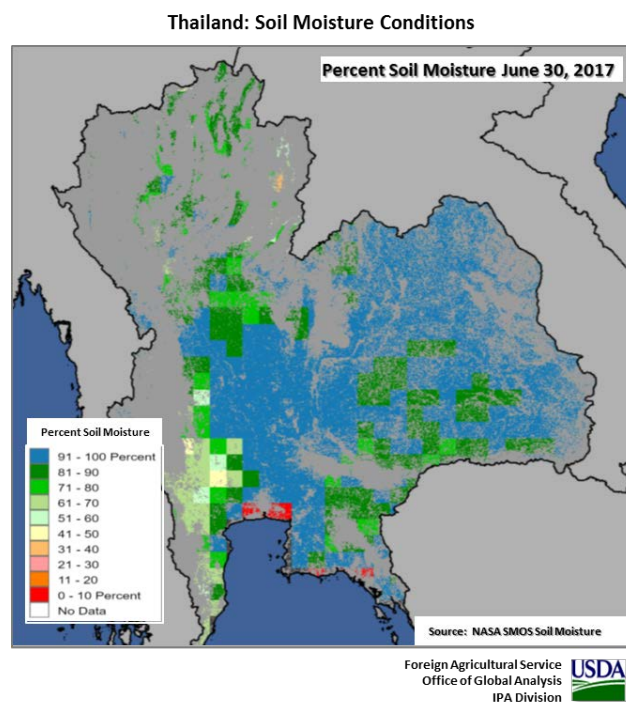
Argentina Corn: 2016/17 Production Estimate Increased

Argentina corn production for 2016/17 is estimated at 41.0 million metric tons, up 41 percent from last year and 3 percent from last month. Area is estimated at 4.9 million hectares, 40 percent higher than last season and 2 percent more than last month. The estimated yield of 8.36 tons per hectare is less than 1 percent above last season’s yield and only slightly more than last month. With harvest of corn half finished, recent rains have delayed field work in Central Cordoba, Buenos Aires, and La Pampa. The harvest of late-planted corn in northern Argentina is also behind. (For more information, please contact Denise.McWilliams@fas.usda.gov).

SATELLITE DERIVED SURFACE WETNESS ANOMALIES – S. AMERICA
STANDARDIZED ANOMALIES FOR JUNE 26 – JULY 2, 2017



Thailand Rice: Beneficial Rainfall and Rising Prices Boost Acreage



Thailand's 2017/18 rice production is forecast at 20.4 million metric tons (milled basis), up 5 percent from last month and 6 percent from last year. Harvested area is estimated at 10.7 million hectares, up 2 percent from last month and 4 percent from last year. Yield is estimated at a record 2.89 tons per hectare. Abundant rainfall coupled with adequate irrigation supplies and rising farm-gate prices for rice are encouraging Thai farmers to plant early and expand acreage in 2017/18. Harvested rice area is expected to increase for both wet and dry season crops. Beneficial rainfall during the main wet season planting period of May to June has boosted the outlook for wet season rice yields. Planting was virtually complete in early July, with the bulk of crops currently having adequate to ideal moisture for establishment. The irrigated crop in the Central Plains is reportedly in ideal

condition, which will also help raise average wet season yield prospects this year. Dry season rice area is expected to return to normal this year, making a full recovery from two years of drought-reduced plantings. (For more information, please contact Michael.Shean@fas.usda.gov).

India Rice: Forecast Rice Production Up due to Acreage Expansion

USDA forecasts India rice production for 2017/18 at 108.0 million metric tons (milled), up about 2 percent from last month and unchanged from the previous year. Harvested area is forecasted at 44.5 million hectares, up 3 percent from last year. Yield is forecast at 3.64 kilograms per hectare, down 3 percent from the previous year. The decrease is based on area expansion on marginal lands which will likely have a negative impact on the overall yields.

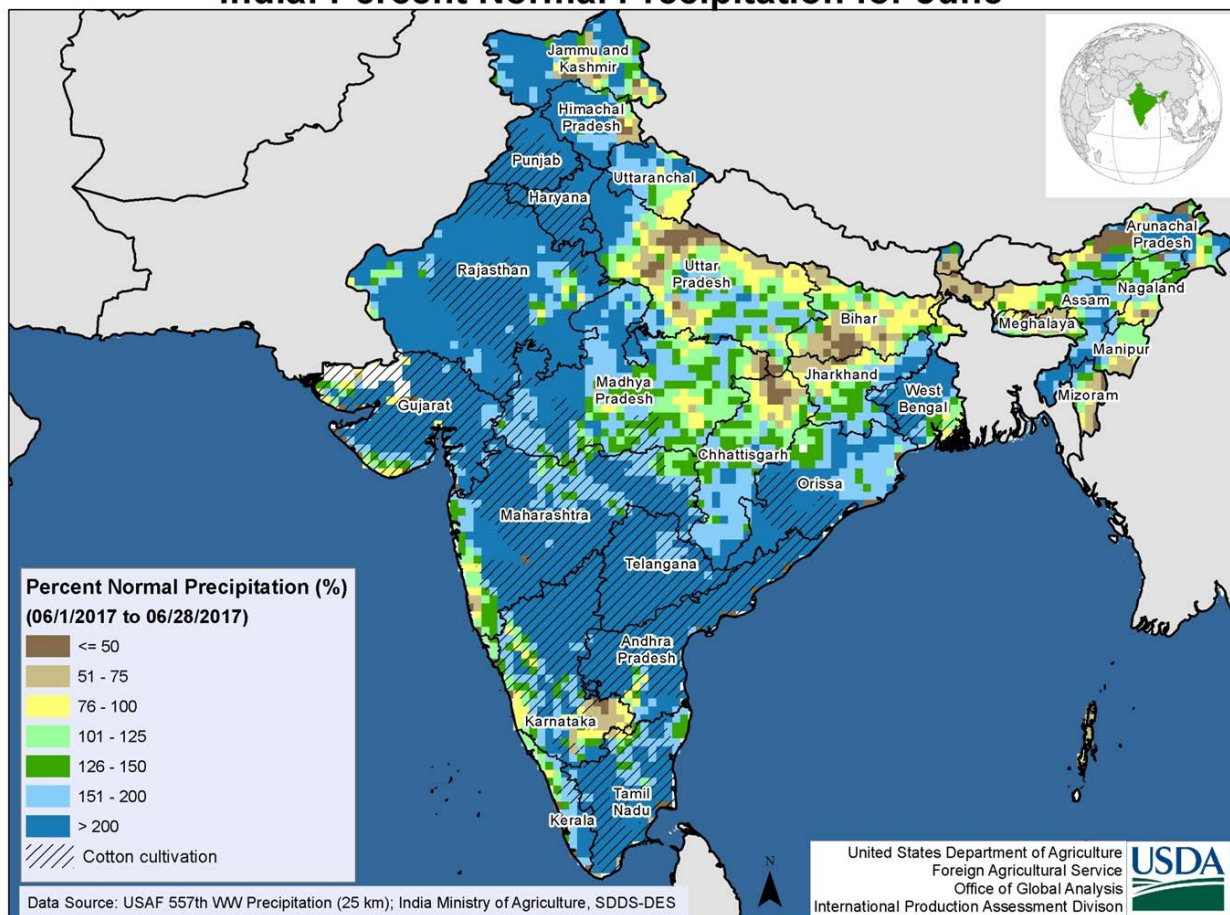
The Ministry of Agriculture's *All India Crop Situation Kharif 2017* reported that as of June 29 planting of *kharif* rice was 10 percent complete, similar to last year's pace. Although the monsoon advanced slowly for most of June, it has now progressed to the major rice producing areas of central and eastern India. Following the arrival of the monsoon in these regions, farmers began sowing. (For more information, please contact Arnella.Trent@fas.usda.gov).

India Cotton: Acreage Up 14 percent from Last Year

USDA forecasts India cotton production for 2017/18 at 29 million 480-pound bales, up 7 percent from the previous year. The increase is due to expanded planted area. Harvested area is forecast at 12 million hectares, up 14 percent from the previous year. Yield is forecast at 526 kilograms per hectare, down nearly 6 percent from last year.

Farmers are expected to expand harvested area due to higher domestic prices compared to other crops, and the expectation of a normal monsoon. The Ministry of Agriculture’s *All India Crop Situation Kharif 2017* reported that as of June 29 cotton planting in the northern Indian states of Punjab, Haryana, and Rajasthan was up nearly 36 percent from the same period last year.

India: Percent Normal Precipitation for June



Although the monsoon arrived early, it advanced slowly during most of June. As of the end of June the monsoon had progressed to the major cotton areas in central India: Gujarat, Maharashtra, and Madhya Pradesh. Planting has begun in west central India. According to the *All India Crop Situation* report, planting progress was up 35 percent from the 5-year average. (For more information, please contact Arnella.Trent@fas.usda.gov).



**World Agricultural Production
U.S. Department of Agriculture**

Foreign Agricultural Service / Office of Global Analysis
International Production Assessment Division (IPAD)
Ag Box 1051, Room 4630, South Building
Washington, DC 20250-1051

<http://www.pecad.fas.usda.gov/>

Telephone: (202) 720-1662 Fax: (202) 720-1158

This report uses information from the Foreign Agricultural Service’s (FAS) global network of agricultural attachés and counselors, official statistics of foreign governments and other foreign source materials, and the analysis of economic data and satellite imagery. Estimates of foreign area, yield, and production are from the International Production Assessment Division, FAS, and are reviewed by USDA’s Inter-Agency Commodity Estimates Committee. Estimates of U.S. area, yield, and production are from USDA’s National Agricultural Statistics Service. Numbers within the report may not add to totals because of rounding. This report reflects official USDA estimates released in the World Agricultural Supply and Demand Estimates (WASDE-567), July 12, 2017.

Printed copies are available from the National Technical Information Service. Download an order form at http://www.ntis.gov/products/specialty/usda/fas_a-g.asp, or call NTIS at 1-800-363-2068.

The FAS International Production Assessment Division prepared this report. The next issue of World Agricultural Production will be released after 12:00 p.m. Eastern Time, August 10, 2017.

Conversion Table

Metric tons to bushels

Wheat, soybeans	=	MT * 36.7437
Corn, sorghum, rye	=	MT * 39.36825
Barley	=	MT * 45.929625
Oats	=	MT * 68.894438

Metric tons to 480-lb bales

Cotton	=	MT * 4.592917
--------	---	---------------

Metric tons to hundredweight

Rice	=	MT * 22.04622
------	---	---------------

Area & weight

1 hectare	=	2.471044 acres
1 kilogram	=	2.204622 pounds



For further information, contact:
U.S. Department of Agriculture
Foreign Agricultural Service
Office of Global Analysis
International Production Assessment Division
Ag Box 1051, Room 4630, South Building
Washington, DC 20250-1051

Telephone: (202) 720-1662

Fax: (202) 720-1158

GENERAL INFORMATION

Director	Ronald Frantz	202-720-4056	ronald.frantz@fas.usda.gov
Deputy Director	Robert Tetrault	202-720-1071	robert.tetrault@fas.usda.gov
Administrative Assistant	Shelisa Johnson	202-720-1662	shelisa.johnson@fas.usda.gov
USDA Remote Sensing Advisor	Glenn Bethel	202-720-1280	glenn.bethel@fas.usda.gov
Sr. Analyst/Satellite Imagery	Curt Reynolds, Ph.D.	202-690-0134	curt.reynolds@fas.usda.gov
Archives Manager/Technical Lead			
Sr. Analyst/ Technical Lead	Dath Mita, Ph.D.	202-720-7339	dath.mita@fas.usda.gov
Sr. Analyst/ Global Special	Jim Crutchfield	202-690-0135	james.crutchfield@fas.usda.gov
Projects Manager/Technical Lead			
Sr. Analyst/Technical Lead	Vacant		
GIS Analyst/WAP Coordinator	Justin Jenkins	202-720-0419	justin.jenkins@fas.usda.gov

COUNTRY- AND REGION-SPECIFIC INFORMATION

South America, Argentina, Venezuela, and Colombia	Denise McWilliams, Ph.D.	202-720-0107	denise.mcwilliams@fas.usda.gov
Europe, and North Africa	Bryan Purcell	202-690-0138	bryan.purcell@fas.usda.gov
Russia, Ukraine, Kazakhstan	Mark Lindeman	202-690-0143	mark.lindeman@fas.usda.gov
South Asia, Sri Lanka	Arnella Trent	202-720-0881	arnella.trent@fas.usda.gov
Bangladesh, India, and Nepal			
East Asia, China, and Japan	Dath Mita, Ph.D.	202-720-7339	dath.mita@fas.usda.gov
Sub-Saharan Africa,	Curt Reynolds, Ph.D.	202-690-0134	curt.reynolds@fas.usda.gov
Nigeria and South Africa			
S.E. Asia, Indonesia, Thailand, Malaysia, Philippines, Cambodia and Vietnam	Michael Shean	202-720-7366	michael.shean@fas.usda.gov
Central America, Mexico, and Western United States	Justin Jenkins	202-720-0419	justin.jenkins@fas.usda.gov
Australia, New Zealand, Pakistan	Jim Crutchfield	202-690-0135	james.crutchfield@fas.usda.gov
Papua New Guinea and South Pacific Islands			
Middle East and Central Asia	Bill Baker, Ph.D.	202-260-8109	william.baker@fas.usda.gov
Canada, Caribbean,	Katie McGaughey	202-720-9210	katie.mcgaughey@fas.usda.gov
and Eastern United States			
Brazil	Maria Anulacion	202-690-0133	maria.anulacion@fas.usda.gov



The Foreign Agricultural Service (FAS) updates its production, supply and distribution (PSD) database for cotton, oilseeds, and grains at 12:00 p.m. on the day the *World Agricultural Supply and Demand Estimates* (WASDE) report is released. This circular is released by 12:15 p.m.

FAS Reports and Databases:

Current *World Market and Trade and World Agricultural Production* Reports:

<http://apps.fas.usda.gov/psdonline/psdDataPublications.aspx>

Archives *World Market and Trade and World Agricultural Production* Reports:

<http://usda.mannlib.cornell.edu/MannUsda/viewTaxonomy.do?taxonomyID=7>

Production, Supply and Distribution Database (PSD Online):

<http://apps.fas.usda.gov/psdonline/psdHome.aspx>

EU Countries Area & Production Estimates

<http://apps.fas.usda.gov/psdonline/psdDownload.aspx>

Global Agricultural Trade System (U.S. Exports and Imports):

<http://apps.fas.usda.gov/gats/default.aspx>

Export Sales Report:

<http://apps.fas.usda.gov/esrquery/>

Global Agricultural Information Network (Agricultural Attaché Reports):

<http://gain.fas.usda.gov/Pages/Default.aspx>

Other USDA Reports:

World Agricultural Supply and Demand Estimates (WASDE):

<http://www.usda.gov/oce/commodity/wasde/>

Economic Research Service:

<http://www.ers.usda.gov/topics/crops>

National Agricultural Statistics Service:

<http://www.nass.usda.gov/Publications/>

Table 01 World Crop Production Summary

Million Metric Tons

Commodity	World -	Total Foreign	North America			Former Soviet		European	Asia (WAP)					South America		Selected Other			All Others
			United States	Canada -	Mexico -	Russia -	Ukraine -		China -	India -	Indonesia	Pakistan	Thailand	Argentina	Brazil -	Australia	South Africa	Turkey -	
---Million metric tons---																			
Wheat																			
2015/16	737.0	680.9	56.1	27.6	3.8	61.0	27.3	nr	130.2	86.5	0.0	25.1	0.0	11.3	5.5	24.2	1.4	19.5	257.4
2016/17 prel.	754.3	691.5	62.9	31.7	3.9	72.5	26.8	nr	128.9	87.0	0.0	25.6	0.0	17.0	6.7	35.1	1.9	17.3	237.1
2017/18 proj.																			
Jun	739.5	689.9	49.6	28.4	3.7	69.0	25.0	nr	131.0	96.0	0.0	26.2	0.0	17.5	5.6	25.0	1.8	18.0	242.8
Jul	737.8	689.9	47.9	28.4	3.7	72.0	24.0	nr	130.0	96.0	0.0	26.2	0.0	17.5	5.6	23.5	1.8	19.5	241.9
Coarse Grains																			
2015/16	1,259.0	892.0	367.0	25.6	32.4	37.4	33.4	nr	231.4	38.7	10.5	5.7	4.8	37.9	69.1	12.4	8.7	14.2	329.7
2016/17 prel.	1,362.1	959.5	402.6	25.6	33.5	40.8	39.3	nr	227.4	44.2	10.9	6.1	5.3	48.7	99.9	16.9	17.0	10.9	333.2
2017/18 proj.																			
Jun	1,310.3	939.9	370.4	25.8	31.8	41.2	37.3	nr	223.0	42.2	11.4	6.3	5.0	47.7	97.6	11.9	13.0	11.6	334.2
Jul	1,316.4	941.1	375.3	25.8	31.8	41.7	37.1	nr	223.0	42.2	11.4	6.3	5.0	47.3	97.6	11.4	13.0	13.1	334.5
Rice, Milled																			
2015/16	471.9	465.7	6.1	0.0	0.2	0.7	0.0	nr	145.8	104.4	36.2	6.8	15.8	0.9	7.2	0.2	0.0	0.5	147.0
2016/17 prel.	483.8	476.7	7.1	0.0	0.2	0.7	0.0	nr	144.9	108.0	37.2	6.8	19.2	0.9	8.2	0.6	0.0	0.5	149.6
2017/18 proj.																			
Jun	481.0	474.7	6.4	0.0	0.2	0.7	0.0	nr	145.0	106.0	37.0	6.9	19.5	0.9	8.0	0.6	0.0	0.5	149.3
Jul	483.7	477.6	6.1	0.0	0.2	0.7	0.0	nr	145.0	108.0	37.0	6.9	20.4	0.9	8.0	0.6	0.0	0.5	149.3
Total Grains																			
2015/16	2,467.9	2,038.6	429.3	53.2	36.3	99.2	60.7	nr	507.4	229.6	46.7	37.6	20.6	50.1	81.9	36.8	10.1	34.2	734.2
2016/17 prel.	2,600.3	2,127.7	472.6	57.3	37.6	114.0	66.1	nr	501.1	239.2	48.1	38.5	24.5	66.5	114.8	52.6	18.9	28.6	719.9
2017/18 proj.																			
Jun	2,530.9	2,104.5	426.4	54.1	35.7	110.9	62.3	nr	499.0	244.2	48.4	39.4	24.5	66.0	111.2	37.5	14.8	30.2	726.4
Jul	2,537.9	2,108.6	429.3	54.1	35.7	114.4	61.1	nr	498.0	246.2	48.4	39.4	25.4	65.6	111.2	35.6	14.8	33.2	725.7
Oilseeds																			
2015/16	521.1	405.2	115.9	24.8	1.0	12.9	17.6	nr	54.5	29.6	11.8	3.5	0.9	60.8	99.0	3.9	1.5	2.3	81.3
2016/17 prel.	571.5	444.2	127.3	25.1	1.1	15.0	19.7	nr	55.0	38.0	12.3	3.7	0.9	62.6	116.8	5.6	2.3	2.7	83.4
2017/18 proj.																			
Jun	573.0	446.2	126.8	29.4	1.2	15.3	20.7	nr	56.6	38.2	12.7	4.5	1.0	61.9	110.0	5.4	2.2	2.9	84.4
Jul	573.9	446.9	127.0	29.4	1.1	15.4	21.2	nr	56.8	38.7	12.7	4.4	1.0	61.9	110.0	4.9	2.2	2.9	84.4
Cotton																			
2015/16	96.8	83.9	12.9	0.0	0.9	0.0	0.0	1.3	22.0	26.4	0.0	7.0	0.0	0.8	5.9	2.9	0.0	2.7	14.0
2016/17 prel.	106.5	89.4	17.2	0.0	0.8	0.0	0.0	1.3	22.8	27.0	0.0	7.7	0.0	0.7	6.8	4.4	0.1	3.2	14.7
2017/18 proj.																			
Jun	114.7	95.5	19.2	0.0	1.3	0.0	0.0	1.4	24.0	28.0	0.0	9.3	0.0	0.7	7.0	4.8	0.1	3.7	15.3
Jul	115.4	96.4	19.0	0.0	1.2	0.0	0.0	1.4	24.0	29.0	0.0	9.2	0.0	0.7	7.0	4.8	0.1	3.8	15.3

1/ Includes wheat, coarse grains, and rice (milled) shown above.

Table 02 Wheat Area, Yield, and Production

Country / Region	Area (Million hectares)				Yield (Metric tons per hectare)				Production (Million metric tons)				Change in Production			
	2015/16	Prel.	2017/18 Proj.		2015/16	Prel.	2017/18 Proj.		2015/16	Prel.	2017/18 Proj.		From last month		From last year	
		2016/17	Jun	Jul		2016/17	Jun	Jul		2016/17	Jun	Jul	MMT	Percent	MMT	Percent
World	225.07	222.40	221.62	220.96	3.27	3.39	3.34	3.34	736.98	754.31	739.53	737.83	-1.71	-0.23	-16.49	-2.19
United States	19.15	17.76	15.59	15.43	2.93	3.54	3.18	3.10	56.12	62.86	49.64	47.89	-1.75	-3.53	-14.97	-23.81
Total Foreign	205.92	204.63	206.03	205.54	3.31	3.38	3.35	3.36	680.87	691.45	689.89	689.94	0.04	0.01	-1.52	-0.22
European Union	26.83	27.20	26.62	26.62	5.98	5.35	5.66	5.63	160.48	145.47	150.75	150.00	-0.75	-0.50	4.53	3.11
China	24.14	24.19	24.20	24.20	5.39	5.33	5.41	5.37	130.19	128.85	131.00	130.00	-1.00	-0.76	1.15	0.89
South Asia																
India	31.47	30.22	30.72	30.72	2.75	2.88	3.13	3.13	86.53	87.00	96.00	96.00	0.00	0.00	9.00	10.34
Pakistan	9.20	9.20	9.05	9.05	2.73	2.78	2.90	2.90	25.10	25.60	26.20	26.20	0.00	0.00	0.60	2.34
Afghanistan	2.55	2.55	2.55	2.55	1.96	2.00	1.96	1.96	5.00	5.10	5.00	5.00	0.00	0.00	-0.10	-1.96
Nepal	0.77	0.77	0.77	0.77	2.25	2.23	2.31	2.31	1.74	1.72	1.78	1.78	0.00	0.00	0.06	3.61
Former Soviet Union - 12																
Russia	25.58	27.00	27.50	27.30	2.39	2.69	2.51	2.64	61.04	72.53	69.00	72.00	3.00	4.35	-0.53	-0.73
Ukraine	7.12	6.45	6.60	6.60	3.83	4.16	3.79	3.64	27.27	26.80	25.00	24.00	-1.00	-4.00	-2.80	-10.45
Kazakhstan	11.57	12.37	11.50	11.50	1.19	1.21	1.13	1.13	13.75	14.99	13.00	13.00	0.00	0.00	-1.99	-13.25
Uzbekistan	1.40	1.40	1.40	1.40	5.14	5.14	5.14	5.14	7.20	7.20	7.20	7.20	0.00	0.00	0.00	0.00
Belarus	0.73	0.70	0.70	0.70	3.96	3.71	3.71	3.71	2.90	2.60	2.60	2.60	0.00	0.00	0.00	0.00
Canada	9.58	8.88	9.00	9.00	2.88	3.57	3.15	3.15	27.59	31.70	28.35	28.35	0.00	0.00	-3.35	-10.57
South America																
Argentina	3.95	5.20	5.60	5.60	2.86	3.27	3.13	3.13	11.30	17.00	17.50	17.50	0.00	0.00	0.50	2.94
Brazil	2.45	2.12	2.10	2.10	2.26	3.17	2.67	2.67	5.54	6.73	5.60	5.60	0.00	0.00	-1.13	-16.79
Uruguay	0.33	0.22	0.20	0.20	3.61	3.55	3.50	3.50	1.19	0.78	0.70	0.70	0.00	0.00	-0.08	-10.26
Australia	12.79	12.85	12.80	12.60	1.89	2.73	1.95	1.87	24.17	35.11	25.00	23.50	-1.50	-6.00	-11.61	-33.07
Africa																
Egypt	1.26	1.26	1.26	1.26	6.43	6.43	6.43	6.43	8.10	8.10	8.10	8.10	0.00	0.00	0.00	0.00
Morocco	3.31	2.41	3.30	3.30	2.44	1.13	1.76	1.76	8.06	2.73	5.80	5.80	0.00	0.00	3.07	112.38
Ethiopia	1.60	1.60	1.60	1.60	2.19	2.44	2.63	2.63	3.50	3.90	4.20	4.20	0.00	0.00	0.30	7.69
Algeria	2.10	1.30	2.10	2.10	1.29	1.54	1.19	1.19	2.70	2.00	2.50	2.50	0.00	0.00	0.50	25.00
Middle East																
Turkey	7.86	7.82	7.80	7.80	2.48	2.21	2.31	2.50	19.50	17.25	18.00	19.50	1.50	8.33	2.25	13.04
Iran	6.80	6.80	6.80	6.80	2.21	2.28	2.21	2.21	15.00	15.50	15.00	15.00	0.00	0.00	-0.50	-3.23
Iraq	2.45	2.35	2.23	2.23	1.80	1.80	1.81	1.81	4.41	4.23	4.03	4.03	0.00	0.00	-0.20	-4.73
Syria	1.45	1.10	1.10	1.10	2.41	2.18	2.00	2.00	3.50	2.40	2.20	2.20	0.00	0.00	-0.20	-8.33
Mexico	0.83	0.72	0.68	0.68	4.55	5.39	5.37	5.37	3.75	3.88	3.65	3.65	0.00	0.00	-0.23	-6.02
Others	7.82	7.95	7.86	7.77	2.73	2.80	2.77	2.77	21.35	22.29	21.73	21.53	-0.20	-0.93	-0.76	-3.41

World and Selected Countries and Regions

Table 03 Total Coarse Grain Area, Yield, and Production

Country / Region	Area (Million hectares)				Yield (Metric tons per hectare)				Production (Million metric tons)				Change in Production			
	2015/16	Prel.	2017/18 Proj.		2015/16	Prel.	2017/18 Proj.		2015/16	Prel.	2017/18 Proj.		From last month		From last year	
		2016/17	Jun	Jul		2016/17	Jun	Jul		2016/17	Jun	Jul	MMT	Percent	MMT	Percent
World	322.52	324.09	319.98	321.40	3.90	4.20	4.09	4.10	1,259.04	1,362.14	1,310.33	1,316.44	6.12	0.47	-45.69	-3.35
United States	37.80	39.20	36.79	37.26	9.71	10.27	10.07	10.07	367.01	402.60	370.39	375.34	4.95	1.34	-27.26	-6.77
Total Foreign	284.73	284.89	283.19	284.14	3.13	3.37	3.32	3.31	892.03	959.54	939.93	941.10	1.17	0.12	-18.43	-1.92
China	40.16	38.99	37.27	37.27	5.76	5.83	5.98	5.98	231.40	227.44	223.04	223.04	0.00	0.00	-4.40	-1.93
European Union	30.21	29.45	29.88	29.89	5.05	5.16	5.14	5.11	152.65	151.96	153.50	152.70	-0.80	-0.52	0.74	0.49
South America																
Brazil	17.00	18.51	18.71	18.71	4.07	5.40	5.22	5.22	69.13	99.85	97.60	97.60	0.00	0.00	-2.25	-2.26
Argentina	5.78	6.84	6.90	6.80	6.56	7.12	6.91	6.95	37.94	48.67	47.65	47.25	-0.40	-0.84	-1.42	-2.91
Former Soviet Union - 12																
Russia	15.23	15.14	15.60	15.60	2.46	2.69	2.64	2.67	37.43	40.77	41.15	41.65	0.50	1.22	0.89	2.17
Ukraine	7.62	7.83	7.56	7.56	4.38	5.01	4.93	4.91	33.39	39.26	37.29	37.09	-0.20	-0.54	-2.17	-5.52
Kazakhstan	2.46	2.33	2.23	2.23	1.51	1.90	1.64	1.64	3.73	4.43	3.64	3.64	0.00	0.00	-0.79	-17.83
Belarus	0.95	1.22	1.15	1.15	3.48	3.37	3.48	3.48	3.32	4.10	4.00	4.00	0.00	0.00	-0.10	-2.44
Africa																
Nigeria	13.10	13.30	13.15	13.15	1.37	1.39	1.39	1.39	17.95	18.50	18.25	18.25	0.00	0.00	-0.25	-1.35
South Africa	2.41	3.18	3.10	3.10	3.61	5.33	4.21	4.21	8.68	16.97	13.04	13.04	0.00	0.00	-3.92	-23.13
Tanzania	5.15	5.33	5.35	5.35	1.39	1.24	1.32	1.24	7.17	6.63	7.05	6.65	-0.40	-5.67	0.03	0.38
Burkina	3.85	3.85	3.85	3.85	0.99	1.09	1.14	1.14	3.82	4.19	4.40	4.40	0.00	0.00	0.21	5.01
Ethiopia	5.41	5.64	5.66	5.66	2.41	2.25	2.34	2.34	13.04	12.70	13.24	13.24	0.00	0.00	0.54	4.21
Egypt	0.97	0.97	0.97	0.97	7.05	7.05	7.05	7.05	6.86	6.86	6.86	6.86	0.00	0.00	0.00	0.00
Mali	3.95	3.85	3.85	3.85	1.38	1.52	1.27	1.27	5.44	5.86	4.90	4.90	0.00	0.00	-0.96	-16.40
India	24.51	24.50	24.15	24.15	1.58	1.80	1.75	1.75	38.70	44.20	42.20	42.20	0.00	0.00	-2.00	-4.52
Southeast Asia																
Indonesia	3.30	3.40	3.50	3.50	3.18	3.21	3.24	3.24	10.50	10.90	11.35	11.35	0.00	0.00	0.45	4.13
Philippines	2.42	2.68	2.70	2.70	2.88	3.03	3.07	3.07	6.97	8.11	8.30	8.30	0.00	0.00	0.19	2.34
Vietnam	1.15	1.20	1.05	1.20	4.55	4.64	4.76	4.67	5.23	5.57	5.00	5.60	0.60	12.00	0.03	0.57
Thailand	1.12	1.20	1.13	1.13	4.25	4.39	4.39	4.39	4.76	5.25	4.95	4.95	0.00	0.00	-0.30	-5.71
Mexico	9.25	9.32	9.20	9.20	3.50	3.60	3.46	3.46	32.38	33.50	31.83	31.83	0.00	0.00	-1.68	-5.00
Canada	4.88	4.64	4.57	4.57	5.25	5.52	5.65	5.65	25.62	25.63	25.78	25.78	0.00	0.00	0.15	0.57
Australia	5.76	5.50	5.17	5.27	2.16	3.07	2.30	2.17	12.44	16.91	11.88	11.43	-0.45	-3.79	-5.48	-32.42
Middle East																
Turkey	4.31	4.26	4.24	4.24	3.31	2.56	2.75	3.10	14.24	10.89	11.64	13.14	1.50	12.88	2.25	20.66
Iran	1.74	1.74	1.74	1.84	3.20	3.20	3.15	3.08	5.56	5.56	5.46	5.66	0.20	3.66	0.10	1.80
Others	72.05	70.05	70.54	71.23	1.44	1.50	1.50	1.50	103.71	104.85	105.94	106.56	0.62	0.59	1.72	1.64

World and Selected Countries and Regions; Coarse Grain includes: Barley, Corn, Millet, Mixed Grains, Oats, Rye and Sorghum

Table 04 Corn Area, Yield, and Production

Country / Region	Area (Million hectares)				Yield (Metric tons per hectare)				Production (Million metric tons)				Change in Production			
	Prel.		2017/18 Proj.		Prel.		2017/18 Proj.		Prel.		2017/18 Proj.		From last month		From last year	
	2015/16	2016/17	Jun	Jul	2015/16	2016/17	Jun	Jul	2015/16	2016/17	Jun	Jul	MMT	Percent	MMT	Percent
World	178.45	183.57	180.56	181.80	5.43	5.82	5.71	5.70	968.81	1,068.79	1,031.86	1,036.90	5.03	0.49	-31.90	-2.98
United States	32.68	35.11	33.35	33.79	10.57	10.96	10.71	10.72	345.51	384.78	357.27	362.09	4.83	1.35	-22.68	-5.90
Total Foreign	145.77	148.46	147.22	148.01	4.28	4.61	4.58	4.56	623.30	684.02	674.60	674.80	0.21	0.03	-9.21	-1.35
China	38.12	36.76	35.00	35.00	5.89	5.97	6.14	6.14	224.63	219.55	215.00	215.00	0.00	0.00	-4.55	-2.07
South America																
Brazil	16.00	17.50	17.70	17.70	4.19	5.54	5.37	5.37	67.00	97.00	95.00	95.00	0.00	0.00	-2.00	-2.06
Argentina	3.50	4.90	4.90	4.90	8.29	8.37	8.16	8.16	29.00	41.00	40.00	40.00	0.00	0.00	-1.00	-2.44
Bolivia	0.32	0.09	0.32	0.32	2.31	1.38	2.32	2.32	0.73	0.12	0.74	0.74	0.00	0.00	0.62	512.50
European Union	9.25	8.49	8.75	8.76	6.35	7.15	7.09	7.03	58.73	60.71	62.00	61.60	-0.40	-0.65	0.89	1.46
Africa																
South Africa	2.21	3.00	2.90	2.90	3.71	5.47	4.31	4.31	8.21	16.40	12.50	12.50	0.00	0.00	-3.90	-23.78
Nigeria	3.80	4.00	3.80	3.80	1.84	1.80	1.82	1.82	7.00	7.20	6.90	6.90	0.00	0.00	-0.30	-4.17
Ethiopia	2.15	2.20	2.22	2.22	3.16	2.89	3.02	3.02	6.80	6.35	6.70	6.70	0.00	0.00	0.35	5.51
Egypt	0.75	0.75	0.75	0.75	8.00	8.00	8.00	8.00	6.00	6.00	6.00	6.00	0.00	0.00	0.00	0.00
Tanzania	4.00	4.20	4.20	4.20	1.50	1.31	1.40	1.31	6.00	5.50	5.90	5.50	-0.40	-6.78	0.00	0.00
Malawi	1.75	1.65	1.70	1.70	1.35	1.94	2.12	2.12	2.37	3.20	3.60	3.60	0.00	0.00	0.40	12.50
Zambia	0.96	1.16	1.20	1.43	2.72	2.48	2.75	2.52	2.62	2.87	3.30	3.61	0.31	9.30	0.73	25.55
Kenya	2.10	2.10	1.70	2.10	1.76	1.52	1.65	1.40	3.69	3.20	2.80	2.95	0.15	5.36	-0.25	-7.81
Uganda	1.10	1.10	1.10	1.10	2.04	1.53	2.36	2.36	2.25	1.68	2.60	2.60	0.00	0.00	0.92	54.39
Zimbabwe	1.53	0.80	1.20	1.20	0.48	0.64	0.83	0.83	0.74	0.51	1.00	1.00	0.00	0.00	0.49	95.31
Former Soviet Union - 12																
Ukraine	4.09	4.25	4.40	4.40	5.71	6.59	6.48	6.48	23.33	28.00	28.50	28.50	0.00	0.00	0.50	1.79
Russia	2.67	2.78	2.90	2.90	4.93	5.51	5.52	5.52	13.17	15.31	16.00	16.00	0.00	0.00	0.70	4.54
South Asia																
India	8.81	9.60	9.50	9.50	2.56	2.71	2.63	2.63	22.57	26.00	25.00	25.00	0.00	0.00	-1.00	-3.85
Pakistan	1.21	1.30	1.35	1.35	4.38	4.31	4.30	4.30	5.30	5.60	5.80	5.80	0.00	0.00	0.20	3.57
Nepal	0.85	0.90	0.90	0.90	2.35	2.22	2.22	2.22	2.00	2.00	2.00	2.00	0.00	0.00	0.00	0.00
Southeast Asia																
Indonesia	3.30	3.40	3.50	3.50	3.18	3.21	3.24	3.24	10.50	10.90	11.35	11.35	0.00	0.00	0.45	4.13
Philippines	2.42	2.68	2.70	2.70	2.88	3.03	3.07	3.07	6.97	8.11	8.30	8.30	0.00	0.00	0.19	2.34
Vietnam	1.15	1.20	1.05	1.20	4.55	4.64	4.76	4.67	5.23	5.57	5.00	5.60	0.60	12.00	0.03	0.57
Thailand	1.09	1.17	1.10	1.10	4.31	4.45	4.45	4.45	4.70	5.20	4.90	4.90	0.00	0.00	-0.30	-5.77
Mexico	7.21	7.50	7.15	7.15	3.60	3.65	3.50	3.50	25.97	27.40	25.00	25.00	0.00	0.00	-2.40	-8.76
Canada	1.31	1.33	1.45	1.45	10.33	9.96	9.93	9.93	13.56	13.20	14.40	14.40	0.00	0.00	1.20	9.09
Turkey	0.62	0.57	0.55	0.55	10.00	9.65	10.00	10.00	6.20	5.50	5.50	5.50	0.00	0.00	0.00	0.00
Others	23.51	23.10	23.23	23.23	2.47	2.59	2.53	2.53	58.03	59.93	58.81	58.76	-0.05	-0.09	-1.17	-1.95

World and Selected Countries and Regions

Table 05 Barley Area, Yield, and Production

Country / Region	Area (Million hectares)				Yield (Metric tons per hectare)				Production (Million metric tons)				Change in Production			
	Prel.		2017/18 Proj.		Prel.		2017/18 Proj.		Prel.		2017/18 Proj.		From last month		From last year	
	2015/16	2016/17	Jun	Jul	2015/16	2016/17	Jun	Jul	2015/16	2016/17	Jun	Jul	MMT	Percent	MMT	Percent
World	50.34	48.29	47.35	47.58	2.96	3.06	2.90	2.91	149.25	148.00	137.47	138.53	1.06	0.77	-9.46	-6.39
United States	1.28	1.04	0.89	0.79	3.72	4.19	3.91	3.95	4.75	4.34	3.46	3.11	-0.35	-10.08	-1.23	-28.26
Total Foreign	49.06	47.25	46.46	46.79	2.95	3.04	2.88	2.89	144.50	143.66	134.01	135.42	1.41	1.05	-8.24	-5.73
European Union	12.25	12.37	12.40	12.40	5.07	4.85	4.80	4.77	62.10	60.00	59.50	59.10	-0.40	-0.67	-0.90	-1.50
Former Soviet Union - 12																
Russia	8.04	7.96	8.00	8.00	2.12	2.21	2.13	2.19	17.08	17.55	17.00	17.50	0.50	2.94	-0.05	-0.27
Ukraine	3.00	3.05	2.60	2.60	2.92	3.25	2.85	2.77	8.75	9.90	7.40	7.20	-0.20	-2.70	-2.70	-27.27
Kazakhstan	2.04	1.89	1.80	1.80	1.31	1.71	1.39	1.39	2.68	3.23	2.50	2.50	0.00	0.00	-0.73	-22.62
Belarus	0.50	0.60	0.55	0.55	3.70	3.50	3.45	3.45	1.85	2.10	1.90	1.90	0.00	0.00	-0.20	-9.52
Azerbaijan	0.36	0.35	0.33	0.35	2.95	2.71	2.31	2.71	1.06	0.95	0.75	0.95	0.20	26.67	0.00	0.00
Canada	2.35	2.22	2.00	2.00	3.49	3.96	3.80	3.80	8.23	8.80	7.60	7.60	0.00	0.00	-1.20	-13.64
Australia	4.11	4.03	3.50	3.80	2.09	3.33	2.29	2.11	8.59	13.40	8.00	8.00	0.00	0.00	-5.40	-40.32
Middle East																
Turkey	3.40	3.40	3.40	3.40	2.18	1.40	1.62	2.06	7.40	4.75	5.50	7.00	1.50	27.27	2.25	47.37
Iran	1.30	1.30	1.30	1.40	2.31	2.31	2.23	2.21	3.00	3.00	2.90	3.10	0.20	6.90	0.10	3.33
Iraq	1.25	1.20	1.03	1.03	1.24	1.29	1.24	1.24	1.55	1.55	1.28	1.28	0.00	0.00	-0.28	-17.74
Syria	0.70	0.45	0.45	0.45	0.71	0.72	0.71	0.71	0.50	0.33	0.32	0.32	0.00	0.00	-0.01	-1.54
Africa																
Ethiopia	1.20	1.20	1.20	1.20	1.63	1.71	1.73	1.73	1.95	2.05	2.07	2.07	0.00	0.00	0.02	0.98
Morocco	2.06	1.21	1.80	1.80	1.65	0.51	1.11	1.11	3.40	0.62	2.00	2.00	0.00	0.00	1.38	222.58
Algeria	1.00	0.90	0.95	0.95	1.30	1.11	1.26	1.26	1.30	1.00	1.20	1.20	0.00	0.00	0.20	20.00
Tunisia	0.38	0.28	0.38	0.38	0.97	1.34	1.33	1.33	0.37	0.38	0.50	0.50	0.00	0.00	0.13	33.33
South Africa	0.09	0.09	0.10	0.10	3.53	3.98	3.60	3.60	0.33	0.35	0.36	0.36	0.00	0.00	0.01	1.69
South America																
Argentina	1.25	0.87	0.90	0.80	3.95	3.79	3.80	3.75	4.94	3.30	3.40	3.00	-0.40	-11.76	-0.30	-9.09
Uruguay	0.09	0.16	0.14	0.14	3.82	3.63	4.14	4.14	0.36	0.58	0.58	0.58	0.00	0.00	0.00	0.00
Brazil	0.13	0.11	0.11	0.11	2.07	3.02	2.86	2.86	0.26	0.32	0.30	0.30	0.00	0.00	-0.02	-5.36
India	0.71	0.70	0.65	0.65	2.28	2.71	2.62	2.62	1.61	1.90	1.70	1.70	0.00	0.00	-0.20	-10.53
China	0.45	0.50	0.52	0.52	4.18	4.00	4.04	4.04	1.87	2.00	2.10	2.10	0.00	0.00	0.10	5.00
Mexico	0.32	0.33	0.30	0.30	2.33	2.96	2.45	2.45	0.74	0.98	0.74	0.74	0.00	0.00	-0.24	-24.85
Afghanistan	0.28	0.28	0.28	0.28	1.43	1.50	1.46	1.46	0.40	0.42	0.41	0.41	0.00	0.00	-0.01	-2.38
Others	1.81	1.81	1.79	1.80	2.32	2.32	2.24	2.24	4.19	4.21	4.01	4.02	0.01	0.20	-0.19	-4.45

World and Selected Countries and Regions

Table 06 Oats Area, Yield, and Production

Country / Region	Area (Million hectares)				Yield (Metric tons per hectare)				Production (Million metric tons)				Change in Production			
	2015/16	Prel.	2017/18 Proj.		2015/16	Prel.	2017/18 Proj.		2015/16	Prel.	2017/18 Proj.		From last month		From last year	
		2016/17	Jun	Jul		2016/17	Jun	Jul		2016/17	Jun	Jul	MMT	Percent	MMT	Percent
World	9.59	9.44	9.58	9.33	2.34	2.47	2.40	2.39	22.38	23.32	22.95	22.31	-0.64	-2.81	-1.01	-4.34
United States	0.52	0.40	0.41	0.36	2.52	2.37	2.40	2.19	1.30	0.94	0.97	0.78	-0.19	-19.94	-0.16	-17.13
Total Foreign	9.07	9.05	9.18	8.98	2.32	2.47	2.40	2.40	21.08	22.38	21.98	21.53	-0.45	-2.05	-0.85	-3.80
European Union	2.50	2.56	2.60	2.60	3.01	3.15	3.08	3.08	7.52	8.07	8.00	8.00	0.00	0.00	-0.07	-0.86
Former Soviet Union - 12																
Russia	2.83	2.75	2.80	2.80	1.60	1.73	1.71	1.71	4.53	4.75	4.80	4.80	0.00	0.00	0.05	1.05
Ukraine	0.22	0.21	0.21	0.21	2.29	2.40	2.38	2.38	0.50	0.50	0.50	0.50	0.00	0.00	0.00	0.00
Belarus	0.15	0.14	0.15	0.15	3.26	2.86	3.33	3.33	0.49	0.40	0.50	0.50	0.00	0.00	0.10	25.00
Kazakhstan	0.20	0.21	0.20	0.20	1.20	1.60	1.25	1.25	0.24	0.34	0.25	0.25	0.00	0.00	-0.09	-25.37
Canada	1.06	0.90	0.95	0.95	3.25	3.35	3.47	3.47	3.43	3.00	3.30	3.30	0.00	0.00	0.30	10.00
South America																
Argentina	0.24	0.32	0.30	0.30	2.30	2.45	2.24	2.24	0.55	0.79	0.66	0.66	0.00	0.00	-0.13	-15.92
Brazil	0.29	0.29	0.29	0.29	2.69	2.84	2.37	2.37	0.78	0.83	0.70	0.70	0.00	0.00	-0.13	-15.94
Chile	0.11	0.12	0.12	0.12	4.94	5.04	4.75	4.75	0.53	0.60	0.55	0.55	0.00	0.00	-0.05	-9.00
Uruguay	0.03	0.03	0.03	0.03	1.38	1.48	1.52	1.52	0.04	0.04	0.04	0.04	0.00	0.00	0.00	2.70
Oceania																
Australia	0.83	0.90	0.90	0.70	1.57	2.07	1.67	1.50	1.31	1.87	1.50	1.05	-0.45	-30.00	-0.82	-43.76
New Zealand	0.01	0.01	0.01	0.01	4.83	5.29	5.00	5.00	0.03	0.04	0.04	0.04	0.00	0.00	0.00	-5.41
China	0.18	0.19	0.19	0.19	1.00	1.00	1.00	1.00	0.18	0.19	0.19	0.19	0.00	0.00	0.01	2.70
Africa																
Algeria	0.09	0.09	0.09	0.09	1.29	1.29	1.29	1.29	0.11	0.11	0.11	0.11	0.00	0.00	0.00	0.00
Morocco	0.05	0.05	0.05	0.05	1.19	1.44	1.44	1.44	0.06	0.07	0.07	0.07	0.00	0.00	0.00	0.00
South Africa	0.03	0.03	0.03	0.03	1.83	1.83	1.83	1.83	0.06	0.06	0.06	0.06	0.00	0.00	0.00	0.00
Other Europe																
Norway	0.06	0.08	0.08	0.08	4.54	4.34	4.00	4.00	0.29	0.33	0.30	0.30	0.00	0.00	-0.03	-9.09
Serbia	0.03	0.03	0.03	0.03	2.20	2.17	2.17	2.17	0.07	0.07	0.07	0.07	0.00	0.00	0.00	0.00
Albania	0.01	0.01	0.01	0.01	2.08	2.08	2.08	2.08	0.03	0.03	0.03	0.03	0.00	0.00	0.00	0.00
Bosnia and Herzegovina	0.01	0.01	0.01	0.01	2.67	2.90	2.57	2.57	0.02	0.03	0.02	0.02	0.00	0.00	-0.01	-37.93
Turkey	0.09	0.09	0.09	0.09	2.33	2.33	2.33	2.33	0.21	0.21	0.21	0.21	0.00	0.00	0.00	0.00
Mexico	0.05	0.04	0.05	0.05	1.81	1.89	1.80	1.80	0.09	0.07	0.09	0.09	0.00	0.00	0.02	25.00
Others	0.01	0.01	0.01	0.01	1.93	1.79	1.79	1.79	0.03	0.03	0.03	0.03	0.00	0.00	0.00	0.00

World and Selected Countries and Regions

Table 07 Rye Area, Yield, and Production

Country / Region	Area (Million hectares)				Yield (Metric tons per hectare)				Production (Million metric tons)				Change in Production			
	Prel.		2017/18 Proj.		Prel.		2017/18 Proj.		Prel.		2017/18 Proj.		From last month		From last year	
	2015/16	2016/17	Jun	Jul	2015/16	2016/17	Jun	Jul	2015/16	2016/17	Jun	Jul	MMT	Percent	MMT	Percent
World	4.15	4.26	4.54	4.56	2.93	2.95	2.89	2.89	12.18	12.56	13.15	13.18	0.03	0.22	0.62	4.91
United States	0.15	0.17	0.16	0.17	1.99	2.04	1.78	1.79	0.30	0.34	0.28	0.31	0.03	10.28	-0.03	-9.06
Total Foreign	4.00	4.09	4.39	4.39	2.97	2.99	2.93	2.93	11.89	12.22	12.87	12.87	0.00	0.00	0.65	5.30
European Union	1.96	1.94	2.00	2.00	4.00	3.86	3.95	3.95	7.84	7.51	7.90	7.90	0.00	0.00	0.40	5.26
Former Soviet Union - 12																
Russia	1.25	1.25	1.50	1.50	1.67	2.03	1.87	1.87	2.08	2.54	2.80	2.80	0.00	0.00	0.26	10.32
Belarus	0.25	0.33	0.30	0.30	3.01	2.46	2.67	2.67	0.75	0.80	0.80	0.80	0.00	0.00	0.00	0.00
Ukraine	0.15	0.14	0.17	0.17	2.59	2.71	2.65	2.65	0.39	0.39	0.45	0.45	0.00	0.00	0.06	15.38
Kazakhstan	0.04	0.04	0.04	0.04	0.97	1.14	1.14	1.14	0.04	0.04	0.04	0.04	0.00	0.00	0.00	-2.44
Turkey	0.14	0.14	0.14	0.14	2.50	2.50	2.50	2.50	0.35	0.35	0.35	0.35	0.00	0.00	0.00	0.00
Canada	0.10	0.13	0.12	0.12	2.38	3.23	2.78	2.78	0.23	0.41	0.32	0.32	0.00	0.00	-0.09	-21.95
South America																
Chile	0.00	0.00	0.00	0.00	5.00	5.00	5.00	5.00	0.01	0.01	0.01	0.01	0.00	0.00	0.00	0.00
Argentina	0.03	0.04	0.04	0.04	1.79	1.93	2.10	2.10	0.06	0.08	0.08	0.08	0.00	0.00	0.00	3.80
Other Europe																
Bosnia and Herzegovina	0.00	0.00	0.00	0.00	2.50	3.25	2.75	2.75	0.01	0.01	0.01	0.01	0.00	0.00	0.00	-15.38
Switzerland	0.00	0.00	0.00	0.00	5.50	5.50	5.50	5.50	0.01	0.01	0.01	0.01	0.00	0.00	0.00	0.00
Serbia	0.00	0.00	0.00	0.00	2.50	2.50	2.50	2.50	0.01	0.01	0.01	0.01	0.00	0.00	0.00	0.00
Australia	0.04	0.04	0.04	0.04	0.61	0.63	0.65	0.65	0.02	0.03	0.03	0.03	0.00	0.00	0.00	4.00
Others	0.04	0.03	0.04	0.04	2.24	1.21	1.71	1.71	0.08	0.04	0.06	0.06	0.00	0.00	0.02	50.00

World and Selected Countries and Regions

Table 08 Sorghum Area, Yield, and Production

Country / Region	Area (Million hectares)				Yield (Metric tons per hectare)				Production (Million metric tons)				Change in Production			
	Prel.		2017/18 Proj.		Prel.		2017/18 Proj.		Prel.		2017/18 Proj.		From last month		From last year	
	2015/16	2016/17	Jun	Jul	2015/16	2016/17	Jun	Jul	2015/16	2016/17	Jun	Jul	MMT	Percent	MMT	Percent
World	43.54	41.66	41.47	41.63	1.41	1.50	1.43	1.44	61.42	62.64	59.34	59.98	0.64	1.07	-2.66	-4.25
United States	3.18	2.49	2.00	2.15	4.77	4.89	4.21	4.21	15.16	12.20	8.41	9.04	0.64	7.55	-3.16	-25.87
Total Foreign	40.36	39.17	39.48	39.49	1.15	1.29	1.29	1.29	46.27	50.44	50.94	50.94	0.00	0.00	0.50	0.98
Africa																
Nigeria	5.30	5.30	5.35	5.35	1.16	1.23	1.22	1.22	6.15	6.50	6.55	6.55	0.00	0.00	0.05	0.77
Ethiopia	1.70	1.80	1.80	1.80	2.29	2.00	2.09	2.09	3.90	3.60	3.77	3.77	0.00	0.00	0.17	4.58
Sudan	8.00	8.00	8.00	8.00	0.30	0.69	0.56	0.56	2.39	5.50	4.50	4.50	0.00	0.00	-1.00	-18.18
Burkina	1.80	1.80	1.80	1.80	0.80	0.89	1.00	1.00	1.44	1.60	1.80	1.80	0.00	0.00	0.20	12.50
Mali	1.25	1.25	1.25	1.25	1.04	1.12	1.04	1.04	1.30	1.40	1.30	1.30	0.00	0.00	-0.10	-7.14
Niger	3.70	3.70	3.70	3.70	0.51	0.49	0.46	0.46	1.88	1.81	1.70	1.70	0.00	0.00	-0.11	-5.97
Cameroon	0.75	0.75	0.75	0.75	1.53	1.53	1.53	1.53	1.15	1.15	1.15	1.15	0.00	0.00	0.00	0.00
Tanzania	0.80	0.80	0.80	0.80	1.03	1.00	1.00	1.00	0.82	0.80	0.80	0.80	0.00	0.00	0.00	0.00
Egypt	0.14	0.14	0.14	0.14	5.36	5.36	5.36	5.36	0.75	0.75	0.75	0.75	0.00	0.00	0.00	0.00
Uganda	0.35	0.35	0.35	0.35	0.91	0.91	0.97	0.97	0.32	0.32	0.34	0.34	0.00	0.00	0.02	6.25
Ghana	0.25	0.25	0.25	0.25	1.05	1.08	1.12	1.12	0.26	0.27	0.28	0.28	0.00	0.00	0.01	4.09
Mozambique	0.37	0.40	0.40	0.40	0.60	0.60	0.60	0.60	0.22	0.24	0.24	0.24	0.00	0.00	0.00	0.00
South Africa	0.05	0.05	0.05	0.05	1.51	3.44	2.50	2.50	0.07	0.16	0.13	0.13	0.00	0.00	-0.03	-19.35
Mexico	1.68	1.45	1.70	1.70	3.33	3.48	3.53	3.53	5.59	5.05	6.00	6.00	0.00	0.00	0.95	18.81
South America																
Argentina	0.75	0.70	0.76	0.76	4.50	5.00	4.61	4.61	3.38	3.50	3.50	3.50	0.00	0.00	0.00	0.00
Brazil	0.58	0.61	0.61	0.61	1.86	2.80	2.62	2.62	1.08	1.70	1.60	1.60	0.00	0.00	-0.10	-5.94
South Asia																
India	6.08	5.10	5.00	5.00	0.70	0.94	0.90	0.90	4.24	4.80	4.50	4.50	0.00	0.00	-0.30	-6.25
Pakistan	0.24	0.20	0.20	0.20	0.60	0.65	0.65	0.65	0.15	0.13	0.13	0.13	0.00	0.00	0.00	0.00
China	0.57	0.76	0.78	0.78	4.79	5.00	4.94	4.94	2.75	3.80	3.85	3.85	0.00	0.00	0.05	1.32
Australia	0.68	0.42	0.63	0.63	2.99	2.66	3.02	3.02	2.04	1.11	1.90	1.90	0.00	0.00	0.79	71.64
European Union	0.13	0.12	0.13	0.13	5.30	5.32	5.60	5.60	0.68	0.62	0.70	0.70	0.00	0.00	0.08	12.36
Others	5.20	5.23	5.03	5.04	1.10	1.08	1.08	1.08	5.73	5.64	5.46	5.46	0.00	0.04	-0.18	-3.21

World and Selected Countries and Regions

Table 09 Rice Area, Yield, and Production
World and Selected Countries and Regions

Country / Region	Area (Million hectares)				Yield (Metric tons per hectare)				Production (Million metric tons)				Change in Production			
	2015/16	Prel.	2017/18 Proj.		2015/16	Prel.	2017/18 Proj.		2015/16	Prel.	2017/18 Proj.		From last month		From last year	
		2016/17	Jun	Jul		2016/17	Jun	Jul		2016/17	Jun	Jul	MMT	Percent	MMT	Percent
World	158.90	160.07	161.76	161.93	4.43	4.51	4.44	4.46	471.87	483.81	481.04	483.66	2.62	0.54	-0.15	-0.03
United States	1.05	1.25	1.05	1.00	8.38	8.11	8.65	8.64	6.13	7.12	6.38	6.07	-0.31	-4.83	-1.04	-14.66
Total Foreign	157.85	158.81	160.71	160.93	4.40	4.48	4.41	4.43	465.73	476.69	474.66	477.59	2.93	0.62	0.90	0.19
East Asia																
China	30.21	30.16	30.20	30.20	6.89	6.86	6.86	6.86	145.77	144.85	145.00	145.00	0.00	0.00	0.15	0.10
Japan	1.59	1.57	1.56	1.56	6.64	6.81	6.69	6.69	7.67	7.78	7.60	7.60	0.00	0.00	-0.18	-2.31
Korea, South	0.80	0.78	0.74	0.74	7.22	7.22	7.01	7.01	4.33	4.20	3.90	3.90	0.00	0.00	-0.30	-7.08
Korea, North	0.48	0.50	0.50	0.50	4.21	4.92	4.92	4.92	1.30	1.60	1.60	1.60	0.00	0.00	0.00	0.00
South Asia																
India	43.50	42.95	44.50	44.50	3.60	3.77	3.57	3.64	104.41	108.00	106.00	108.00	2.00	1.89	0.00	0.00
Bangladesh	11.75	11.77	11.72	11.72	4.41	4.41	4.44	4.44	34.50	34.58	34.70	34.70	0.00	0.00	0.12	0.35
Pakistan	2.74	2.69	2.70	2.70	3.72	3.80	3.83	3.83	6.80	6.80	6.90	6.90	0.00	0.00	0.10	1.47
Nepal	1.50	1.50	1.50	1.50	2.87	3.23	3.25	3.25	2.86	3.22	3.25	3.25	0.00	0.00	0.03	0.81
Sri Lanka	1.23	1.00	1.23	1.23	3.95	3.46	3.96	3.96	3.29	2.35	3.30	3.30	0.00	0.00	0.95	40.43
Southeast Asia																
Indonesia	12.10	12.24	12.20	12.20	4.71	4.78	4.78	4.78	36.20	37.15	37.00	37.00	0.00	0.00	-0.15	-0.40
Vietnam	7.70	7.73	7.70	7.73	5.73	5.79	5.84	5.89	27.58	27.97	28.10	28.45	0.35	1.25	0.48	1.71
Thailand	9.44	10.25	10.48	10.70	2.53	2.84	2.82	2.89	15.80	19.20	19.50	20.40	0.90	4.62	1.20	6.25
Burma	6.90	7.00	7.00	7.00	2.75	2.77	2.75	2.75	12.16	12.40	12.30	12.30	0.00	0.00	-0.10	-0.81
Philippines	4.52	4.60	4.50	4.50	3.86	3.97	3.95	3.95	11.00	11.50	11.20	11.20	0.00	0.00	-0.30	-2.61
Cambodia	3.03	3.09	3.12	3.12	2.50	2.51	2.51	2.51	4.85	4.95	5.00	5.00	0.00	0.00	0.05	1.01
Laos	0.97	0.97	0.98	0.98	3.17	3.19	3.24	3.24	1.93	1.95	2.00	2.00	0.00	0.00	0.05	2.56
Malaysia	0.69	0.70	0.70	0.70	4.01	4.03	4.03	4.03	1.80	1.82	1.82	1.82	0.00	0.00	0.00	0.00
South America																
Brazil	2.01	1.98	2.10	2.10	5.28	6.14	5.60	5.60	7.21	8.25	8.00	8.00	0.00	0.00	-0.25	-3.01
Peru	0.40	0.40	0.40	0.38	7.92	7.97	7.97	7.95	2.17	2.20	2.20	2.11	-0.10	-4.32	-0.10	-4.32
Africa																
Egypt	0.65	0.85	0.70	0.70	8.92	8.18	8.28	8.28	4.00	4.80	4.00	4.00	0.00	0.00	-0.80	-16.67
Madagascar	1.45	1.48	1.43	1.43	2.57	2.59	2.46	2.25	2.38	2.44	2.24	2.05	-0.19	-8.57	-0.39	-16.13
Nigeria	2.50	2.50	2.58	2.58	1.72	1.71	1.71	1.71	2.71	2.70	2.77	2.77	0.00	0.00	0.07	2.67
European Union	0.44	0.44	0.44	0.44	6.77	6.76	6.79	6.79	2.05	2.07	2.08	2.08	0.00	0.00	0.01	0.58
Iran	0.63	0.63	0.63	0.63	4.32	4.32	4.32	4.32	1.78	1.78	1.78	1.78	0.00	0.00	0.00	0.00
Others	10.65	11.06	11.12	11.11	3.02	3.04	3.06	3.06	21.18	22.13	22.41	22.38	-0.03	-0.15	0.25	1.13

Yield is on a rough basis, before the milling process. Production is on a milled basis, after the milling process.

Table 10 Total Oilseed Area, Yield, and Production

World and Selected Countries and Regions

Country / Region	Area (Million hectares)				Yield (Metric tons per hectare)				Production (Million metric tons)				Change in Production			
	Prel.		2017/18 Proj.		Prel.		2017/18 Proj.		Prel.		2017/18 Proj.		From last month		From last year	
	2015/16	2016/17	Jun	Jul	2015/16	2016/17	Jun	Jul	2015/16	2016/17	Jun	Jul	MMT	Percent	MMT	Percent
World Total	--	--	--	--	--	--	--	--	521.11	571.45	573.03	573.94	0.91	0.16	2.48	0.43
Total Foreign	--	--	--	--	--	--	--	--	405.23	444.19	446.23	446.89	0.67	0.15	2.71	0.61
Oilseed, Copra	--	--	--	--	--	--	--	--	5.32	5.41	5.54	5.54	0.00	0.00	0.13	2.38
Oilseed, Palm Kernel	--	--	--	--	--	--	--	--	15.96	16.92	18.04	18.04	0.00	0.00	1.13	6.66
Major Oilseeds	231.84	233.53	245.54	246.69	2.16	2.35	2.24	2.23	499.83	549.12	549.44	550.35	0.91	0.17	1.23	0.22
United States	38.40	39.26	42.47	42.50	3.02	3.24	2.99	2.99	115.88	127.27	126.80	127.04	0.24	0.19	-0.22	-0.18
Foreign Oilseeds	193.44	194.26	203.08	204.19	1.98	2.17	2.08	2.07	383.95	421.86	422.64	423.31	0.67	0.16	1.45	0.34
South America	61.91	61.90	63.73	63.73	2.82	3.17	2.95	2.95	174.51	196.21	188.16	188.16	0.00	0.00	-8.05	-4.10
Brazil	34.43	35.01	35.91	35.91	2.87	3.33	3.06	3.06	98.91	116.73	109.86	109.86	0.00	0.00	-6.87	-5.89
Argentina	21.50	20.73	21.38	21.38	2.83	3.02	2.89	2.89	60.79	62.63	61.87	61.87	0.00	0.00	-0.76	-1.22
Paraguay	3.41	3.50	3.51	3.51	2.75	3.09	2.71	2.71	9.39	10.80	9.54	9.54	0.00	0.00	-1.27	-11.73
Bolivia	1.21	1.23	1.45	1.45	2.25	1.77	2.33	2.33	2.72	2.17	3.36	3.36	0.00	0.00	1.19	54.77
Uruguay	1.18	1.26	1.30	1.30	1.92	2.75	2.37	2.37	2.27	3.47	3.08	3.08	0.00	0.00	-0.39	-11.19
China	22.74	22.88	23.40	23.60	2.39	2.40	2.42	2.40	54.45	55.00	56.55	56.75	0.20	0.35	1.75	3.18
South Asia	37.92	37.46	40.15	41.06	0.86	1.10	1.05	1.04	32.71	41.38	42.33	42.66	0.33	0.77	1.28	3.10
India	34.35	34.28	36.54	37.54	0.84	1.09	1.03	1.01	28.85	37.25	37.46	37.88	0.43	1.13	0.63	1.70
Pakistan	3.22	2.82	3.25	3.17	1.07	1.32	1.37	1.38	3.45	3.71	4.46	4.36	-0.10	-2.24	0.65	17.38
European Union	11.84	11.78	12.01	11.95	2.74	2.69	2.71	2.71	32.44	31.65	32.59	32.41	-0.17	-0.53	0.76	2.41
Former Soviet Union - 12	21.25	22.48	22.92	23.13	1.62	1.73	1.75	1.76	34.31	38.91	40.10	40.77	0.68	1.69	1.86	4.78
Russia	9.43	10.20	10.30	10.30	1.37	1.47	1.49	1.50	12.88	14.99	15.30	15.40	0.10	0.65	0.41	2.74
Ukraine	8.31	8.70	9.05	9.25	2.11	2.27	2.29	2.29	17.58	19.73	20.70	21.20	0.50	2.42	1.47	7.45
Uzbekistan	1.29	1.18	1.15	1.15	1.16	1.18	1.19	1.19	1.49	1.39	1.37	1.37	0.00	0.00	-0.02	-1.37
Canada	10.56	10.30	12.46	12.46	2.35	2.44	2.36	2.36	24.82	25.10	29.44	29.44	0.00	0.00	4.34	17.28
Africa	18.35	18.28	18.62	18.66	0.89	0.91	0.89	0.90	16.36	16.72	16.67	16.81	0.14	0.86	0.09	0.51
Nigeria	3.46	3.48	3.47	3.47	1.09	1.09	1.09	1.09	3.77	3.77	3.78	3.78	0.00	0.00	0.00	0.08
South Africa	1.25	1.28	1.43	1.43	1.23	1.80	1.52	1.52	1.54	2.31	2.16	2.16	0.00	0.00	-0.15	-6.57
Tanzania	1.24	1.19	1.19	1.19	0.74	0.77	0.76	0.76	0.92	0.92	0.91	0.91	0.00	0.00	-0.01	-1.30
Southeast Asia	3.30	3.29	3.28	3.28	1.41	1.41	1.41	1.41	4.65	4.64	4.64	4.64	0.00	0.00	0.00	-0.02
Indonesia	1.06	1.03	1.01	1.01	1.62	1.64	1.62	1.62	1.71	1.69	1.64	1.64	0.00	0.00	-0.05	-2.72
Burma	1.87	1.88	1.88	1.88	1.18	1.18	1.19	1.19	2.22	2.21	2.24	2.24	0.00	0.00	0.03	1.13
Australia	2.73	2.97	3.44	3.24	1.44	1.88	1.57	1.51	3.91	5.60	5.40	4.90	-0.50	-9.30	-0.71	-12.62
Turkey	1.02	1.10	1.20	1.23	2.24	2.43	2.42	2.40	2.28	2.68	2.92	2.95	0.03	1.03	0.27	10.09
Others	1.83	1.82	1.87	1.85	1.92	2.19	2.07	2.07	3.50	3.97	3.87	3.84	-0.03	-0.88	-0.13	-3.35

World Total and Total Foreign: (Major Oilseeds plus copra and palm kernel) Major Oilseeds: (soybeans, sunflowerseeds, peanuts(inshell), cottonseed and rapeseed)

Table 11 Soybean Area, Yield, and Production

Country / Region	Area (Million hectares)				Yield (Metric tons per hectare)				Production (Million metric tons)				Change in Production			
	2015/16	Prel.	2017/18 Proj.		2015/16	Prel.	2017/18 Proj.		2015/16	Prel.	2017/18 Proj.		From last month		From last year	
		2016/17	Jun	Jul		2016/17	Jun	Jul		2016/17	Jun	Jul	MMT	Percent	MMT	Percent
World	120.08	120.50	126.60	126.94	2.61	2.92	2.72	2.72	312.87	351.78	344.67	345.09	0.42	0.12	-6.69	-1.90
United States	33.08	33.48	35.86	35.91	3.23	3.50	3.23	3.23	106.86	117.21	115.80	115.94	0.14	0.12	-1.27	-1.08
Total Foreign	87.00	87.01	90.74	91.03	2.37	2.70	2.52	2.52	206.01	234.57	228.87	229.15	0.28	0.12	-5.42	-2.31
South America																
Brazil	33.30	33.90	34.70	34.70	2.90	3.36	3.08	3.08	96.50	114.00	107.00	107.00	0.00	0.00	-7.00	-6.14
Argentina	19.53	18.35	19.10	19.10	2.91	3.15	2.98	2.98	56.80	57.80	57.00	57.00	0.00	0.00	-0.80	-1.38
Paraguay	3.26	3.39	3.40	3.40	2.82	3.15	2.76	2.76	9.22	10.67	9.40	9.40	0.00	0.00	-1.27	-11.86
Bolivia	0.99	1.13	1.23	1.23	2.39	1.86	2.45	2.45	2.37	2.11	3.00	3.00	0.00	0.00	0.89	42.38
Uruguay	1.14	1.22	1.25	1.25	1.94	2.80	2.40	2.40	2.21	3.40	3.00	3.00	0.00	0.00	-0.40	-11.76
East Asia																
China	6.51	7.20	7.60	7.80	1.81	1.79	1.82	1.79	11.79	12.90	13.80	14.00	0.20	1.45	1.10	8.53
Korea, South	0.06	0.05	0.07	0.07	1.82	1.53	1.79	1.79	0.10	0.08	0.12	0.12	0.00	0.00	0.05	60.00
Korea, North	0.16	0.15	0.15	0.15	1.39	1.33	1.33	1.33	0.22	0.20	0.20	0.20	0.00	0.00	0.00	0.00
Japan	0.14	0.15	0.16	0.16	1.70	1.57	1.68	1.68	0.24	0.24	0.26	0.26	0.00	0.00	0.02	10.17
India	11.67	11.40	12.00	12.00	0.59	1.01	0.96	0.96	6.93	11.50	11.50	11.50	0.00	0.00	0.00	0.00
Canada	2.20	2.22	2.90	2.90	2.90	2.95	2.90	2.90	6.37	6.55	8.40	8.40	0.00	0.00	1.85	28.24
Former Soviet Union - 12																
Russia	2.08	2.12	2.20	2.20	1.30	1.48	1.50	1.50	2.71	3.13	3.30	3.30	0.00	0.00	0.17	5.30
Ukraine	2.14	1.85	2.00	2.00	1.84	2.31	2.30	2.30	3.93	4.28	4.60	4.60	0.00	0.00	0.32	7.48
European Union	0.87	0.81	0.88	0.88	2.67	2.98	2.80	2.80	2.32	2.41	2.45	2.45	0.00	0.00	0.04	1.58
Southeast Asia																
Indonesia	0.44	0.43	0.42	0.42	1.32	1.31	1.29	1.29	0.58	0.57	0.54	0.54	0.00	0.00	-0.03	-4.42
Vietnam	0.09	0.10	0.11	0.11	1.57	1.57	1.57	1.57	0.15	0.16	0.17	0.17	0.00	0.00	0.01	5.10
Thailand	0.03	0.03	0.03	0.03	1.76	1.78	1.77	1.77	0.06	0.06	0.06	0.06	0.00	0.00	0.00	-3.51
Burma	0.15	0.15	0.15	0.15	1.07	1.07	1.07	1.07	0.16	0.16	0.16	0.16	0.00	0.00	0.00	0.00
Serbia	0.22	0.19	0.20	0.20	2.20	3.51	2.63	2.63	0.48	0.65	0.53	0.53	0.00	0.00	-0.13	-19.23
Mexico	0.25	0.28	0.24	0.24	1.36	1.81	1.75	1.75	0.33	0.51	0.42	0.42	0.00	0.00	-0.09	-17.65
Africa																
South Africa	0.50	0.57	0.65	0.65	1.48	2.33	1.69	1.69	0.74	1.34	1.10	1.10	0.00	0.00	-0.24	-17.91
Nigeria	0.70	0.70	0.70	0.70	0.96	0.96	0.96	0.96	0.68	0.68	0.68	0.68	0.00	0.00	0.00	0.00
Zambia	0.11	0.14	0.14	0.23	2.02	1.94	1.94	1.56	0.23	0.27	0.27	0.35	0.08	30.97	0.08	30.97
Uganda	0.05	0.05	0.05	0.05	0.60	0.60	0.60	0.60	0.03	0.03	0.03	0.03	0.00	0.00	0.00	0.00
Middle East																
Iran	0.08	0.08	0.08	0.08	2.44	2.44	2.44	2.44	0.20	0.20	0.20	0.20	0.00	0.00	0.00	0.00
Turkey	0.03	0.03	0.02	0.02	3.70	3.33	3.86	3.86	0.10	0.10	0.09	0.09	0.00	0.00	-0.02	-15.00
Others	0.32	0.33	0.33	0.33	1.86	1.84	1.86	1.86	0.59	0.60	0.62	0.62	0.00	0.00	0.02	3.33

World and Selected Countries and Regions

July 2017

Table 12 Cottonseed Area, Yield, and Production

Country / Region	Area (Million hectares)				Yield (Metric tons per hectare)				Production (Million metric tons)				Change in Production			
	2015/16	Prel.	2017/18 Proj.		2015/16	Prel.	2017/18 Proj.		2015/16	Prel.	2017/18 Proj.		From last month		From last year	
		2016/17	Jun	Jul		2016/17	Jun	Jul		2016/17	Jun	Jul	MMT	Percent	MMT	Percent
World	29.58	28.63	30.92	31.75	1.22	1.36	1.37	1.34	35.98	38.97	42.42	42.64	0.22	0.52	3.67	9.41
United States	3.27	3.85	4.61	4.52	1.12	1.27	1.25	1.25	3.67	4.87	5.74	5.64	-0.10	-1.74	0.77	15.75
Total Foreign	26.31	24.78	26.31	27.23	1.23	1.38	1.39	1.36	32.31	34.10	36.68	37.00	0.32	0.87	2.90	8.50
South Asia																
India	11.90	10.50	11.00	12.00	0.94	1.09	1.08	1.03	11.21	11.46	11.89	12.31	0.43	3.58	0.85	7.41
Pakistan	2.80	2.45	2.89	2.80	1.09	1.37	1.42	1.43	3.05	3.35	4.10	4.00	-0.10	-2.44	0.65	19.40
China	3.05	2.85	3.05	3.05	2.82	3.09	3.08	3.08	8.60	8.80	9.40	9.40	0.00	0.00	0.60	6.82
Former Soviet Union - 12																
Uzbekistan	1.29	1.18	1.15	1.15	1.16	1.18	1.19	1.19	1.49	1.39	1.37	1.37	0.00	0.00	-0.02	-1.37
Turkmenistan	0.50	0.55	0.55	0.55	1.14	0.95	1.08	1.08	0.57	0.52	0.59	0.59	0.00	0.00	0.07	13.71
Tajikistan	0.15	0.17	0.17	0.17	1.08	0.93	1.04	0.90	0.16	0.15	0.18	0.15	-0.02	-13.07	0.00	0.00
Kazakhstan	0.10	0.11	0.12	0.12	0.80	1.02	0.94	0.94	0.08	0.11	0.11	0.11	0.00	0.00	0.00	-3.57
South America																
Brazil	0.96	0.93	1.00	1.00	2.03	2.38	2.29	2.29	1.94	2.21	2.29	2.29	0.00	0.00	0.08	3.43
Argentina	0.38	0.29	0.30	0.30	0.77	0.81	0.82	0.82	0.29	0.24	0.25	0.25	0.00	0.00	0.01	3.81
Middle East																
Turkey	0.37	0.40	0.46	0.49	2.35	2.63	2.61	2.54	0.87	1.05	1.20	1.23	0.03	2.50	0.18	17.14
Syria	0.04	0.04	0.04	0.04	1.60	2.00	1.86	1.86	0.06	0.08	0.07	0.07	0.00	0.00	-0.02	-18.75
Iran	0.10	0.10	0.10	0.10	0.98	0.98	0.95	0.95	0.10	0.10	0.09	0.09	0.00	0.00	-0.01	-8.16
Australia	0.31	0.58	0.57	0.57	2.82	2.34	2.77	2.77	0.88	1.36	1.58	1.58	0.00	0.00	0.22	16.18
European Union	0.30	0.26	0.29	0.29	1.37	1.58	1.52	1.51	0.41	0.42	0.44	0.43	0.00	-0.69	0.02	4.33
Africa																
Burkina	0.66	0.70	0.76	0.76	0.47	0.51	0.51	0.51	0.31	0.36	0.39	0.39	0.00	0.00	0.03	7.80
Mali	0.55	0.66	0.70	0.70	0.51	0.53	0.53	0.53	0.28	0.35	0.37	0.37	0.00	0.00	0.02	6.67
Cameroon	0.22	0.23	0.23	0.23	1.17	1.04	1.11	1.11	0.26	0.24	0.25	0.25	0.00	0.00	0.02	6.38
Cote d'Ivoire	0.40	0.35	0.36	0.36	0.41	0.53	0.54	0.54	0.17	0.18	0.19	0.19	0.00	0.00	0.01	6.01
Benin	0.30	0.42	0.42	0.42	0.55	0.55	0.55	0.55	0.17	0.23	0.23	0.23	0.00	0.00	0.00	0.00
Tanzania	0.40	0.35	0.35	0.35	0.30	0.35	0.31	0.31	0.12	0.12	0.11	0.11	0.00	0.00	-0.01	-9.84
Egypt	0.10	0.06	0.11	0.11	0.98	0.96	0.97	0.97	0.10	0.05	0.11	0.11	0.00	0.00	0.05	101.89
Nigeria	0.26	0.28	0.27	0.27	0.38	0.36	0.38	0.38	0.10	0.10	0.10	0.10	0.00	0.00	0.00	3.03
Uganda	0.07	0.07	0.08	0.08	1.23	1.49	1.45	1.45	0.08	0.11	0.11	0.11	0.00	0.00	0.00	0.00
Zimbabwe	0.10	0.16	0.21	0.20	0.23	0.49	0.29	0.43	0.02	0.08	0.06	0.09	0.02	39.34	0.01	11.84
Sudan	0.05	0.07	0.07	0.07	1.54	1.24	1.24	1.24	0.08	0.09	0.09	0.09	0.00	0.00	0.00	0.00
Mexico	0.13	0.10	0.17	0.16	2.41	2.51	2.50	2.52	0.32	0.26	0.43	0.39	-0.03	-8.00	0.13	50.97
Burma	0.24	0.24	0.25	0.25	1.23	1.17	1.24	1.24	0.30	0.29	0.31	0.31	0.00	0.00	0.03	8.77
Others	0.60	0.71	0.69	0.69	0.53	0.59	0.58	0.58	0.32	0.42	0.40	0.40	0.00	0.00	-0.02	-3.83

World and Selected Countries and Regions

Table 13 Peanut Area, Yield, and Production

Country / Region	Area (Million hectares)				Yield (Metric tons per hectare)				Production (Million metric tons)				Change in Production			
	2015/16	Prel.	2017/18 Proj.		2015/16	Prel.	2017/18 Proj.		2015/16	Prel.	2017/18 Proj.		From last month		From last year	
		2016/17	Jun	Jul		2016/17	Jun	Jul		2016/17	Jun	Jul	MMT	Percent	MMT	Percent
World	24.77	25.48	26.15	26.14	1.63	1.68	1.65	1.66	40.42	42.89	43.20	43.39	0.19	0.44	0.50	1.16
United States	0.63	0.63	0.68	0.72	4.31	4.12	4.08	4.08	2.72	2.58	2.77	2.93	0.15	5.48	0.35	13.45
Total Foreign	24.14	24.86	25.47	25.42	1.56	1.62	1.59	1.59	37.70	40.31	40.43	40.47	0.04	0.09	0.15	0.38
China	4.62	4.75	4.85	4.85	3.56	3.58	3.59	3.59	16.44	17.00	17.40	17.40	0.00	0.00	0.40	2.35
Africa																
Nigeria	2.50	2.50	2.50	2.50	1.20	1.20	1.20	1.20	3.00	3.00	3.00	3.00	0.00	0.00	0.00	0.00
Sudan	2.18	1.80	1.80	1.80	0.86	0.78	0.78	0.78	1.87	1.40	1.40	1.40	0.00	0.00	0.00	0.00
Senegal	1.14	1.10	1.10	1.10	0.94	0.90	0.91	0.91	1.07	0.99	1.00	1.00	0.00	0.00	0.01	0.91
Cameroon	0.40	0.40	0.40	0.40	1.38	1.38	1.38	1.38	0.55	0.55	0.55	0.55	0.00	0.00	0.00	0.00
Ghana	0.40	0.40	0.40	0.40	1.10	1.10	1.10	1.10	0.44	0.44	0.44	0.44	0.00	0.00	0.00	0.00
Chad	0.50	0.50	0.50	0.50	0.80	0.80	0.80	0.80	0.40	0.40	0.40	0.40	0.00	0.00	0.00	0.00
Malawi	0.37	0.37	0.37	0.37	0.79	0.71	0.71	0.71	0.29	0.26	0.26	0.26	0.00	0.00	0.00	0.00
Congo (Kinshasa)	0.48	0.48	0.48	0.48	0.78	0.78	0.78	0.78	0.37	0.37	0.37	0.37	0.00	0.00	0.00	0.00
Niger	0.74	0.74	0.74	0.74	0.47	0.47	0.47	0.47	0.35	0.35	0.35	0.35	0.00	0.00	0.00	0.00
Mali	0.38	0.38	0.38	0.38	1.39	0.87	0.87	0.87	0.52	0.33	0.33	0.33	0.00	0.00	0.00	0.00
Uganda	0.43	0.43	0.43	0.43	0.71	0.71	0.71	0.71	0.30	0.30	0.30	0.30	0.00	0.00	0.00	0.00
Burkina	0.45	0.45	0.45	0.45	0.78	0.78	0.78	0.78	0.35	0.35	0.35	0.35	0.00	0.00	0.00	0.00
Guinea	0.30	0.30	0.30	0.30	1.17	1.20	1.20	1.20	0.35	0.36	0.36	0.36	0.00	0.00	0.00	0.00
Egypt	0.06	0.06	0.06	0.06	3.20	3.20	3.20	3.20	0.21	0.21	0.21	0.21	0.00	0.00	0.00	0.00
Central African Republic	0.10	0.10	0.10	0.10	1.50	1.50	1.50	1.50	0.15	0.15	0.15	0.15	0.00	0.00	0.00	0.00
South Africa	0.02	0.06	0.06	0.06	1.04	2.16	1.82	1.82	0.02	0.12	0.10	0.10	0.00	0.00	-0.02	-17.36
Mozambique	0.29	0.29	0.29	0.29	0.38	0.38	0.38	0.38	0.11	0.11	0.11	0.11	0.00	0.00	0.00	0.00
Cote d'Ivoire	0.08	0.08	0.08	0.08	1.13	1.13	1.13	1.13	0.09	0.09	0.09	0.09	0.00	0.00	0.00	0.00
Benin	0.16	0.15	0.15	0.15	0.85	0.93	0.93	0.93	0.13	0.14	0.14	0.14	0.00	0.00	0.00	0.00
South Asia																
India	4.55	5.50	6.00	6.00	0.98	1.26	1.10	1.10	4.47	6.92	6.60	6.60	0.00	0.00	-0.32	-4.62
Pakistan	0.11	0.09	0.10	0.10	0.90	0.94	0.95	0.95	0.10	0.09	0.09	0.09	0.00	0.00	0.01	5.88
Southeast Asia																
Indonesia	0.62	0.60	0.59	0.59	1.84	1.87	1.86	1.86	1.13	1.12	1.10	1.10	0.00	0.00	-0.02	-1.79
Burma	0.89	0.89	0.89	0.89	1.55	1.55	1.55	1.55	1.38	1.38	1.38	1.38	0.00	0.00	0.00	0.00
Vietnam	0.19	0.20	0.20	0.20	2.31	2.31	2.33	2.33	0.44	0.45	0.47	0.47	0.00	0.00	0.01	3.10
Thailand	0.02	0.02	0.02	0.02	1.63	1.67	1.67	1.67	0.04	0.04	0.04	0.04	0.00	0.00	0.00	0.00
South America																
Argentina	0.29	0.35	0.35	0.35	3.21	3.30	3.36	3.36	0.93	1.14	1.16	1.16	0.00	0.00	0.02	1.75
Brazil	0.12	0.12	0.13	0.13	3.38	3.52	3.46	3.46	0.41	0.43	0.46	0.46	0.00	0.00	0.02	5.54
Mexico	0.07	0.06	0.06	0.06	1.55	1.70	1.70	1.70	0.10	0.10	0.10	0.10	0.00	0.00	0.00	0.00
Others	1.71	1.72	1.72	1.68	1.00	1.01	1.02	1.06	1.70	1.74	1.74	1.78	0.04	2.12	0.04	2.36

Table 14 Sunflowerseed Area, Yield, and Production

Country / Region	Area (Million hectares)				Yield (Metric tons per hectare)				Production (Million metric tons)				Change in Production			
	Prel.		2017/18 Proj.		Prel.		2017/18 Proj.		Prel.		2017/18 Proj.		From last month		From last year	
	2015/16	2016/17	Jun	Jul	2015/16	2016/17	Jun	Jul	2015/16	2016/17	Jun	Jul	MMT	Percent	MMT	Percent
World	23.36	25.22	25.10	25.18	1.73	1.84	1.86	1.86	40.51	46.31	46.58	46.82	0.24	0.51	0.51	1.09
United States	0.73	0.62	0.57	0.49	1.82	1.94	1.79	1.79	1.33	1.20	1.02	0.88	-0.14	-13.67	-0.33	-27.08
Total Foreign	22.63	24.60	24.54	24.69	1.73	1.83	1.86	1.86	39.18	45.11	45.56	45.94	0.38	0.83	0.83	1.84
Former Soviet Union - 12																
Russia	6.45	7.18	7.20	7.20	1.42	1.51	1.53	1.53	9.17	10.86	11.00	11.00	0.00	0.00	0.14	1.31
Ukraine	5.50	6.40	6.20	6.40	2.16	2.22	2.26	2.27	11.90	14.20	14.00	14.50	0.50	3.57	0.30	2.11
Kazakhstan	0.70	0.81	0.80	0.80	0.76	0.94	0.94	0.94	0.53	0.76	0.75	0.75	0.00	0.00	-0.01	-0.66
European Union	4.17	4.14	4.20	4.13	1.85	2.02	2.05	2.03	7.72	8.35	8.60	8.38	-0.22	-2.56	0.03	0.32
South America																
Argentina	1.27	1.72	1.60	1.60	2.13	1.98	2.13	2.13	2.70	3.40	3.40	3.40	0.00	0.00	0.00	0.00
Uruguay	0.04	0.04	0.05	0.05	1.50	1.50	1.56	1.56	0.06	0.07	0.08	0.08	0.00	0.00	0.01	18.18
Bolivia	0.22	0.10	0.22	0.22	1.60	0.67	1.64	1.64	0.35	0.06	0.36	0.36	0.00	0.00	0.30	462.50
Brazil	0.05	0.06	0.08	0.08	1.21	1.49	1.47	1.47	0.06	0.08	0.11	0.11	0.00	0.00	0.03	36.59
Paraguay	0.05	0.03	0.03	0.03	1.64	1.60	1.66	1.66	0.07	0.05	0.05	0.05	0.00	0.00	0.01	10.42
China	1.04	1.08	1.10	1.10	2.60	2.59	2.59	2.59	2.70	2.80	2.85	2.85	0.00	0.00	0.05	1.79
South Asia																
India	0.48	0.38	0.34	0.34	0.66	0.72	0.81	0.81	0.32	0.28	0.27	0.27	0.00	0.00	-0.01	-1.82
Pakistan	0.09	0.07	0.07	0.07	1.06	1.07	1.07	1.07	0.09	0.08	0.08	0.08	0.00	0.00	0.00	0.00
Middle East																
Turkey	0.55	0.60	0.65	0.65	2.00	2.20	2.19	2.19	1.10	1.32	1.43	1.43	0.00	0.00	0.11	7.95
Iran	0.07	0.07	0.07	0.07	1.29	1.29	1.29	1.29	0.09	0.09	0.09	0.09	0.00	0.00	0.00	0.00
Israel	0.01	0.01	0.01	0.01	1.60	1.60	1.60	1.60	0.02	0.02	0.02	0.02	0.00	0.00	0.00	0.00
Africa																
Egypt	0.01	0.01	0.01	0.01	2.43	2.43	2.38	2.38	0.02	0.02	0.02	0.02	0.00	0.00	0.00	11.76
Morocco	0.02	0.02	0.02	0.02	1.29	1.29	1.29	1.29	0.03	0.03	0.03	0.03	0.00	0.00	0.00	0.00
South Africa	0.72	0.64	0.70	0.70	1.05	1.29	1.33	1.33	0.76	0.82	0.93	0.93	0.00	0.00	0.11	13.14
Burma	0.60	0.60	0.60	0.60	0.65	0.65	0.65	0.65	0.39	0.39	0.39	0.39	0.00	0.00	0.00	0.00
Canada	0.04	0.03	0.02	0.02	1.92	1.82	1.90	1.90	0.07	0.05	0.04	0.04	0.00	0.00	-0.01	-25.49
Australia	0.02	0.03	0.03	0.03	1.09	1.10	1.24	1.13	0.03	0.03	0.04	0.03	0.00	-5.56	0.00	6.25
Others	0.55	0.61	0.55	0.56	1.87	2.25	1.91	2.04	1.02	1.37	1.04	1.14	0.10	9.61	-0.23	-16.47

World and Selected Countries and Regions

Table 15 Rapeseed Area, Yield, and Production

Country / Region	Area (Million hectares)				Yield (Metric tons per hectare)				Production (Million metric tons)				Change in Production			
	Prel.		2017/18 Proj.		Prel.		2017/18 Proj.		Prel.		2017/18 Proj.		From last month		From last year	
	2015/16	2016/17	Jun	Jul	2015/16	2016/17	Jun	Jul	2015/16	2016/17	Jun	Jul	MMT	Percent	MMT	Percent
World	34.05	33.70	36.78	36.68	2.06	2.05	1.97	1.97	70.05	69.18	72.58	72.42	-0.16	-0.22	3.24	4.69
United States	0.69	0.69	0.76	0.86	1.88	2.05	1.93	1.93	1.31	1.40	1.47	1.66	0.19	13.14	0.26	18.38
Total Foreign	33.36	33.01	36.02	35.83	2.06	2.05	1.97	1.98	68.74	67.77	71.11	70.76	-0.35	-0.49	2.99	4.40
European Union	6.51	6.57	6.65	6.65	3.38	3.12	3.18	3.18	22.00	20.47	21.10	21.15	0.05	0.24	0.68	3.32
Canada	8.32	8.05	9.54	9.54	2.21	2.30	2.20	2.20	18.38	18.50	21.00	21.00	0.00	0.00	2.50	13.51
China	7.53	7.00	6.80	6.80	1.98	1.93	1.93	1.93	14.93	13.50	13.10	13.10	0.00	0.00	-0.40	-2.96
South Asia																
India	5.75	6.50	7.20	7.20	1.03	1.09	1.00	1.00	5.92	7.09	7.20	7.20	0.00	0.00	0.11	1.54
Pakistan	0.23	0.21	0.20	0.20	0.96	0.95	0.95	0.95	0.22	0.20	0.19	0.19	0.00	0.00	-0.01	-5.00
Bangladesh	0.25	0.25	0.25	0.25	0.92	0.92	0.92	0.92	0.23	0.23	0.23	0.23	0.00	0.00	0.00	0.00
Former Soviet Union - 12																
Russia	0.90	0.91	0.90	0.90	1.12	1.10	1.11	1.22	1.00	1.00	1.00	1.10	0.10	10.00	0.10	10.33
Ukraine	0.68	0.45	0.85	0.85	2.58	2.78	2.47	2.47	1.74	1.25	2.10	2.10	0.00	0.00	0.85	68.00
Belarus	0.17	0.17	0.17	0.17	1.82	1.82	1.82	1.82	0.30	0.30	0.30	0.30	0.00	0.00	0.00	0.00
Kazakhstan	0.22	0.16	0.23	0.23	0.62	1.06	1.00	1.00	0.14	0.17	0.23	0.23	0.00	0.00	0.06	32.35
Australia	2.36	2.33	2.80	2.60	1.25	1.78	1.32	1.23	2.94	4.14	3.70	3.20	-0.50	-13.51	-0.94	-22.78
South America																
Chile	0.05	0.05	0.05	0.05	4.00	4.00	4.15	4.15	0.21	0.18	0.22	0.22	0.00	0.00	0.04	22.22
Paraguay	0.09	0.07	0.07	0.07	1.00	1.20	1.10	1.10	0.09	0.08	0.08	0.08	0.00	0.00	0.00	-4.76
Switzerland	0.02	0.02	0.02	0.02	3.14	3.14	3.14	3.14	0.07	0.07	0.07	0.07	0.00	0.00	0.00	0.00
Ethiopia	0.05	0.05	0.05	0.05	1.56	1.56	1.56	1.56	0.07	0.07	0.07	0.07	0.00	0.00	0.00	0.00
Others	0.25	0.25	0.25	0.25	2.05	2.10	2.07	2.07	0.50	0.52	0.52	0.52	0.00	0.00	0.01	1.36

World and Selected Countries and Regions

Table 16 Copra, Palm Kernel, and Palm Oil Production

Country / Region	Production (Million metric tons)				Change in Production			
	2015/16	Prel.	2017/18 Proj.		From last month		From last year	
		2016/17	Jun	Jul	MMT	Percent	MMT	Percent
Oilseed, Copra								
Philippines	2.10	2.20	2.30	2.30	0.00	0.00	0.10	4.55
Indonesia	1.59	1.58	1.57	1.57	0.00	0.00	-0.01	-0.63
India	0.72	0.72	0.75	0.75	0.00	0.00	0.03	4.17
Vietnam	0.26	0.27	0.27	0.27	0.00	0.00	0.00	0.00
Mexico	0.21	0.21	0.21	0.21	0.00	0.00	0.00	0.00
Papua New Guinea	0.09	0.10	0.10	0.10	0.00	0.00	0.00	0.00
Thailand	0.07	0.07	0.07	0.07	0.00	0.00	0.00	0.00
Sri Lanka	0.07	0.07	0.07	0.07	0.00	0.00	0.00	0.00
Solomon Islands	0.03	0.03	0.03	0.03	0.00	0.00	0.00	0.00
Cote d'Ivoire	0.03	0.03	0.03	0.03	0.00	0.00	0.00	0.00
World	5.32	5.41	5.54	5.54	0.00	0.00	0.13	2.40
Oilseed, Palm Kernel								
Indonesia	8.50	9.00	9.50	9.50	0.00	0.00	0.50	5.56
Malaysia	4.50	4.90	5.40	5.40	0.00	0.00	0.50	10.20
Thailand	0.68	0.74	0.82	0.82	0.00	0.00	0.08	10.81
Nigeria	0.73	0.73	0.73	0.73	0.00	0.00	0.00	0.00
Colombia	0.27	0.24	0.28	0.28	0.00	0.00	0.04	16.67
Guatemala	0.13	0.15	0.15	0.15	0.00	0.00	0.00	0.00
Papua New Guinea	0.15	0.13	0.14	0.14	0.00	0.00	0.01	7.69
Honduras	0.12	0.12	0.12	0.12	0.00	0.00	0.00	0.00
Ecuador	0.11	0.11	0.12	0.12	0.00	0.00	0.01	9.09
Cameroon	0.11	0.11	0.11	0.11	0.00	0.00	0.00	0.00
World	15.96	16.92	18.04	18.04	0.00	0.00	1.12	6.62
Oil, Palm								
Indonesia	32.00	34.00	36.00	36.00	0.00	0.00	2.00	5.88
Malaysia	17.70	19.25	21.00	21.00	0.00	0.00	1.75	9.09
Thailand	1.80	2.00	2.20	2.20	0.00	0.00	0.20	10.00
Colombia	1.28	1.15	1.32	1.32	0.00	0.00	0.17	14.78
Nigeria	0.97	0.97	0.97	0.97	0.00	0.00	0.00	0.00
Guatemala	0.63	0.74	0.74	0.74	0.00	0.00	0.00	0.00
Ecuador	0.52	0.56	0.58	0.58	0.00	0.00	0.01	1.79
Honduras	0.49	0.55	0.55	0.55	0.00	0.00	0.00	0.00
Papua New Guinea	0.58	0.52	0.53	0.53	0.00	0.00	0.01	1.92
Ghana	0.50	0.52	0.52	0.52	0.00	0.00	0.00	0.00
World	58.83	62.67	66.83	66.86	0.04	0.06	4.19	6.69

World and Selected Countries and Regions

Table 17 Cotton Area, Yield, and Production

Country / Region	Area (Million hectares)				Yield (Kilograms per hectare)				Production (Million 480 lb. bales)				Change in Production			
	2015/16	Prel.	2017/18 Proj.		2015/16	Prel.	2017/18 Proj.		2015/16	Prel.	2017/18 Proj.		From last month		From last year	
		2016/17	Jun	Jul		2016/17	Jun	Jul		2016/17	Jun	Jul	MBales	Percent	MBales	Percent
World	30.29	29.40	32.12	32.43	695	789	778	775	96.76	106.54	114.73	115.36	0.64	0.55	8.82	8.28
United States	3.27	3.85	4.61	4.53	859	972	908	914	12.89	17.17	19.20	19.00	-0.20	-1.04	1.83	10.66
Total Foreign	27.03	25.55	27.51	27.90	676	762	756	752	83.87	89.37	95.53	96.36	0.84	0.88	6.99	7.82
South Asia																
India	11.90	10.50	11.50	12.00	483	560	530	526	26.40	27.00	28.00	29.00	1.00	3.57	2.00	7.41
Pakistan	2.80	2.45	2.85	2.80	544	684	710	711	7.00	7.70	9.30	9.15	-0.15	-1.61	1.45	18.83
China	3.05	2.90	3.05	3.05	1,570	1,708	1,713	1,713	22.00	22.75	24.00	24.00	0.00	0.00	1.25	5.49
South America																
Brazil	0.96	0.93	1.00	1.00	1,345	1,592	1,524	1,524	5.90	6.80	7.00	7.00	0.00	0.00	0.20	2.94
Argentina	0.38	0.29	0.30	0.30	479	507	508	508	0.83	0.68	0.70	0.70	0.00	0.00	0.03	3.70
Paraguay	0.01	0.01	0.01	0.01	419	416	416	416	0.03	0.02	0.02	0.02	0.00	0.00	0.00	0.00
Africa																
Burkina	0.66	0.70	0.76	0.76	371	404	404	404	1.13	1.30	1.40	1.40	0.00	0.00	0.10	7.69
Mali	0.55	0.66	0.70	0.70	390	406	404	404	0.98	1.22	1.30	1.30	0.00	0.00	0.08	6.56
Cote d'Ivoire	0.40	0.35	0.36	0.36	333	432	436	436	0.62	0.69	0.73	0.73	0.00	0.00	0.04	5.84
Benin	0.30	0.42	0.42	0.42	363	362	362	362	0.50	0.69	0.69	0.69	0.00	0.00	0.00	0.00
Egypt	0.10	0.06	0.11	0.11	697	673	693	693	0.32	0.17	0.35	0.35	0.00	0.00	0.18	105.88
Cameroon	0.22	0.23	0.23	0.23	510	455	484	484	0.52	0.47	0.50	0.50	0.00	0.00	0.03	6.38
Tanzania	0.40	0.35	0.35	0.35	147	174	156	156	0.27	0.28	0.25	0.25	0.00	0.00	-0.03	-10.71
Nigeria	0.26	0.28	0.27	0.27	193	182	190	190	0.23	0.23	0.24	0.24	0.00	0.00	0.01	2.17
Zimbabwe	0.10	0.16	0.21	0.20	131	281	166	245	0.06	0.20	0.16	0.23	0.07	40.63	0.03	12.50
Ethiopia	0.07	0.08	0.08	0.08	586	544	544	544	0.18	0.20	0.20	0.20	0.00	0.00	0.00	0.00
Former Soviet Union - 12																
Uzbekistan	1.29	1.18	1.18	1.18	644	678	683	683	3.80	3.68	3.70	3.70	0.00	0.00	0.03	0.68
Turkmenistan	0.50	0.55	0.55	0.55	631	529	559	559	1.45	1.33	1.40	1.40	0.00	0.00	0.08	5.66
Tajikistan	0.15	0.17	0.18	0.17	599	515	591	532	0.41	0.39	0.48	0.42	-0.06	-12.63	0.03	6.41
Kazakhstan	0.10	0.12	0.12	0.12	440	606	599	599	0.20	0.32	0.33	0.33	0.00	0.00	0.01	3.13
Middle East																
Turkey	0.37	0.40	0.46	0.49	1,559	1,742	1,751	1,706	2.65	3.20	3.70	3.80	0.10	2.70	0.60	18.75
Syria	0.04	0.04	0.04	0.04	1,034	1,089	995	995	0.19	0.20	0.16	0.16	0.00	0.00	-0.04	-20.00
Iran	0.10	0.10	0.10	0.10	599	653	610	610	0.28	0.30	0.28	0.28	0.00	0.00	-0.02	-6.67
Australia	0.31	0.58	0.45	0.45	1,989	1,652	2,322	2,322	2.85	4.40	4.80	4.80	0.00	0.00	0.40	9.09
Mexico	0.13	0.10	0.17	0.16	1,544	1,615	1,601	1,615	0.94	0.76	1.25	1.15	-0.10	-8.00	0.39	50.52
Burma	0.24	0.24	0.25	0.25	651	634	634	634	0.72	0.71	0.73	0.73	0.00	0.00	0.02	2.11
Others	1.65	1.74	1.84	1.78	455	462	459	471	3.45	3.70	3.88	3.86	-0.02	-0.49	0.16	4.38

World and Selected Countries and Regions

TABLE 18

Note: Tables on pages 35-37 present a record of the July projection and the final Estimate. Using world wheat production as an example, the "root mean square error" means that chances are 2 out of 3 that the current forecast will not be above or below the final estimate by more than 2.9 percent. Chances are 9 out of 10 (90% confidence level) that the difference will not exceed 4.9 percent. The average difference between the July projection and the final estimate is 14.4 million tons, ranging from 1.0 million to 34.6 million tons. The July projection has been below the estimate 22 times and above 14 times.

RELIABILITY OF PRODUCTION PROJECTIONS 1/

COMMODITY AND REGION	Root mean square error	90 percent confidence interval	Difference between forecast and final estimate				
			Average	Smallest	Largest	Years	
						Below final	Above final
	Percent		---Million metric tons---				
WHEAT							
World	2.9	4.9	14.4	1.0	34.6	22	14
U.S.	3.6	6.1	1.7	0.2	6.2	17	19
Foreign	3.1	5.3	14.1	0.3	3.4	23	13
COARSE GRAINS 2/							
World	2.9	5.0	22.8	3.7	68.4	19	17
U.S.	10.4	17.6	16.2	0.6	57.9	17	19
Foreign	2.5	4.3	13.9	1.1	40.5	19	17
RICE (Milled)							
World	2.4	4.1	7.0	0.4	24.0	22	14
U.S.	5.0	8.5	0.2	0.0	0.7	18	16
Foreign	2.5	4.2	7.0	0.5	24.3	22	14
SOYBEANS							
World	5.2	8.9	7.5	0.5	26.9	17	19
U.S.	7.2	12.2	3.6	0.2	11.7	18	18
Foreign	7.6	13.0	6.6	1.0	25.8	20	16
COTTON			---Million 480-lb. bales---				
World	5.8	9.9	3.9	0.0	14.9	22	14
U.S.	9.9	16.9	1.4	0.1	5.3	20	16
Foreign	6.0	10.1	3.1	0.0	12.1	20	15
UNITED STATES			-----Million bushels-----				
CORN	11.4	19.3	583	12	2,190	20	16
SORGHUM	18.6	31.5	71	3	213	19	17
BARLEY	8.0	13.6	22	0	87	13	22
OATS	12.6	21.3	21	0	144	6	29

1/ Marketing years 1981/82 through 2016/17 for grains, soybeans, and cotton. Final for grains, soybeans, and cotton is defined as the first November estimate following the marketing year for 1981/82 through 2015/16, and for 2016/17 the last month's estimate.

2/ Includes corn, sorghum, barley, oats, rye, millet, and mixed grain

July 2017

Office of Global Analysis, FAS, USDA